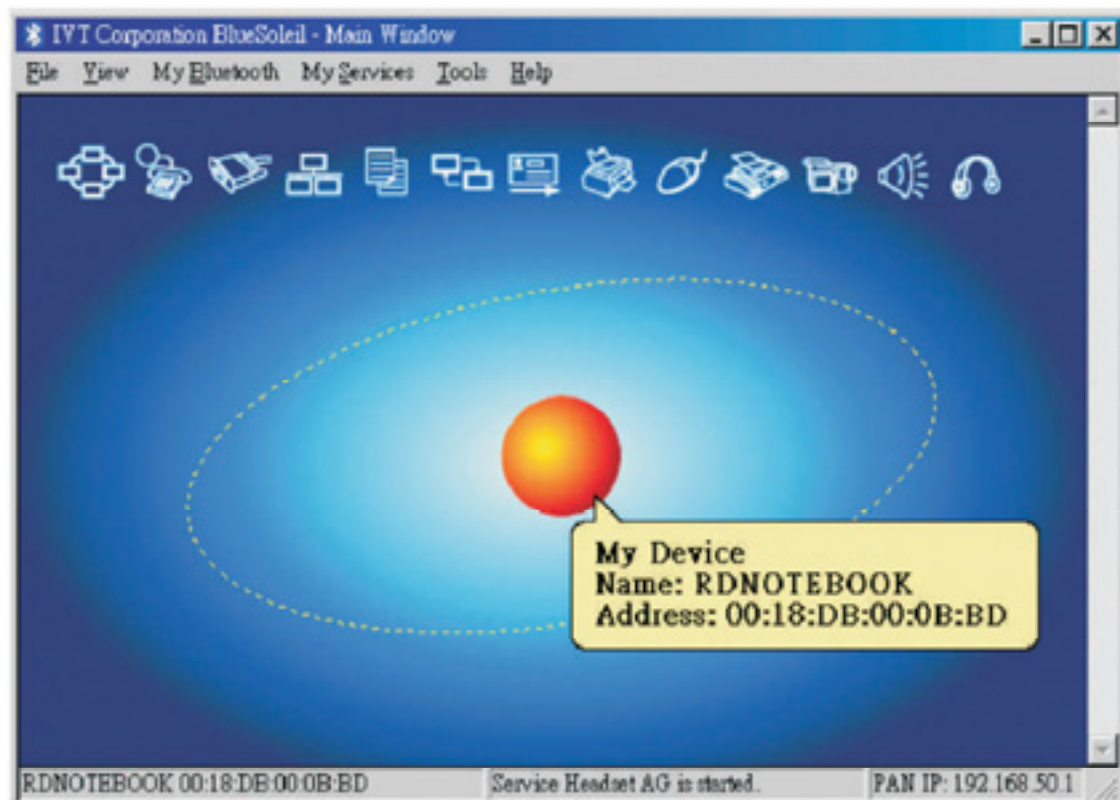
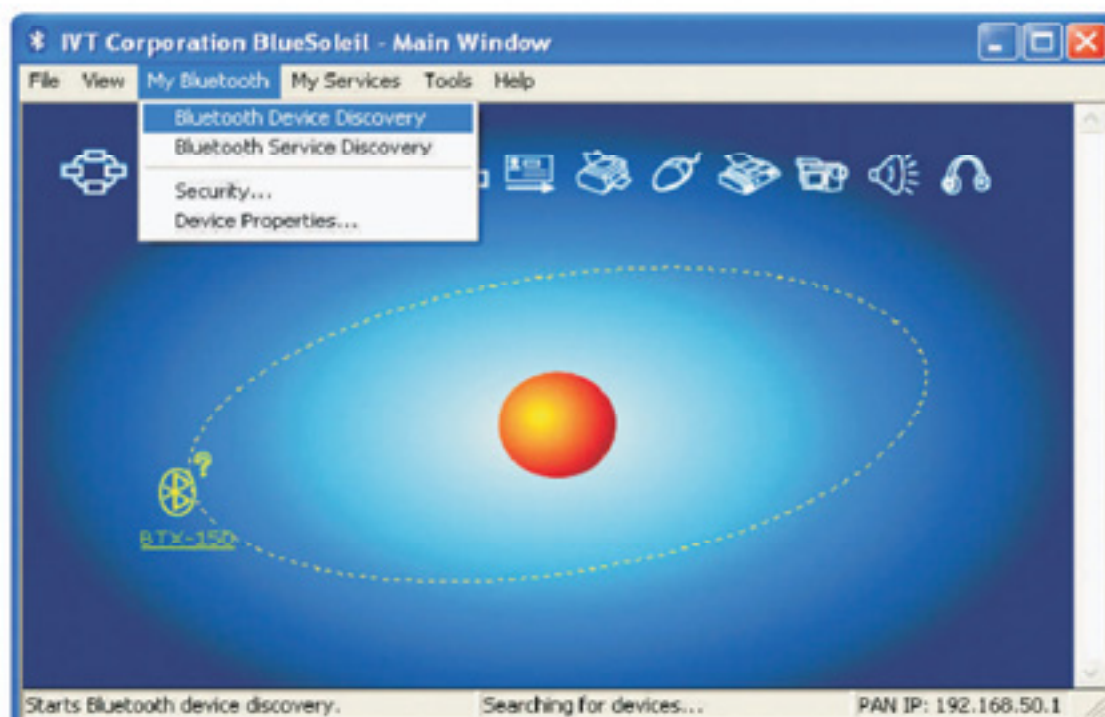


Setup IVT Bluesoleil Driver and parameters on the PC/ DTE

1 Start Bluesoleil

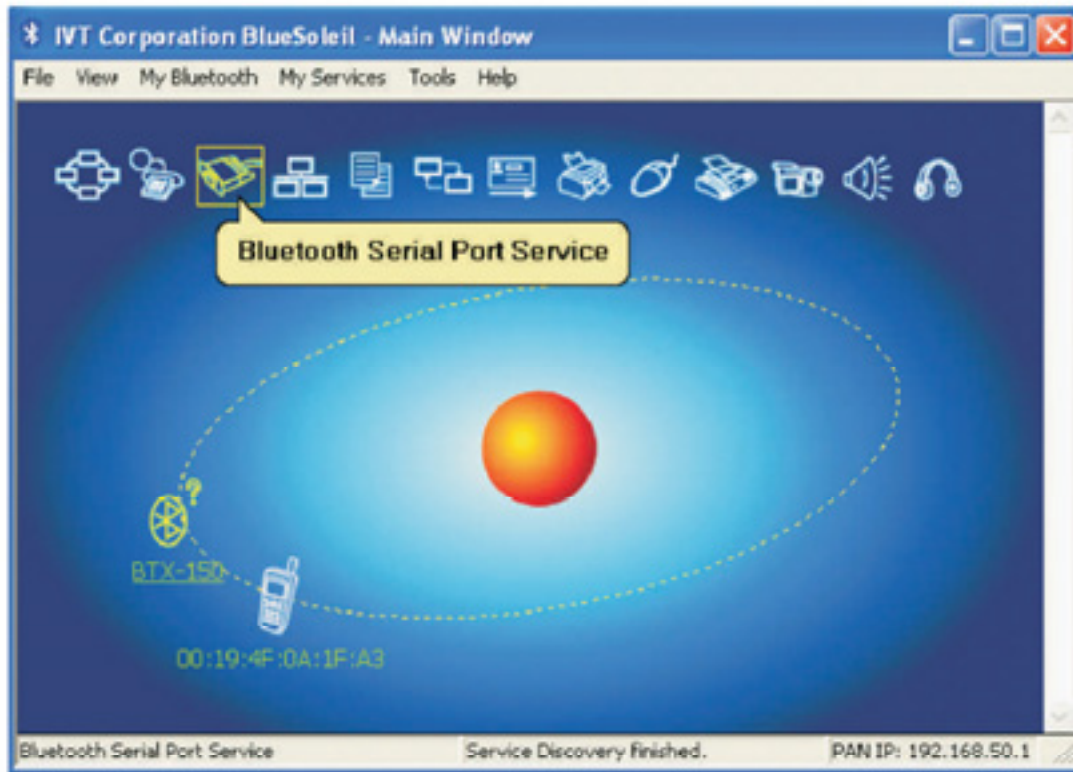


2 Searching for Bluetooth device. Screen shows device name BTX-150 automatically

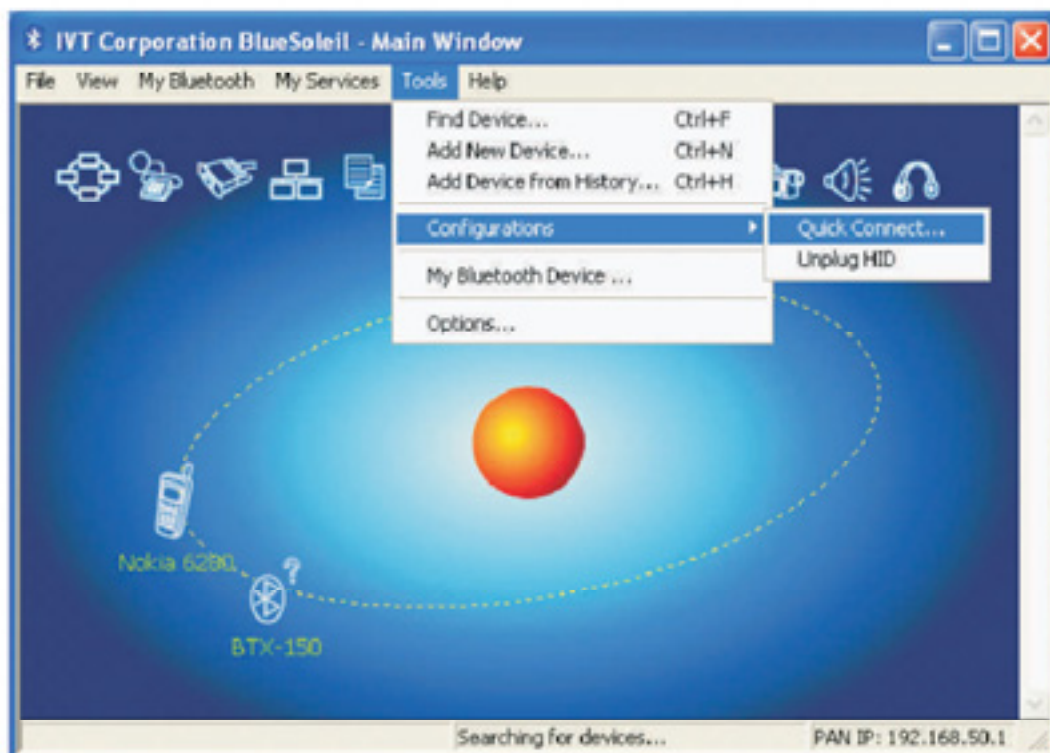


Setup IVT Bluesoleil Driver and parameters on the PC/ DTE

3 Hit device then Bluetooth Serial Port Service will show up

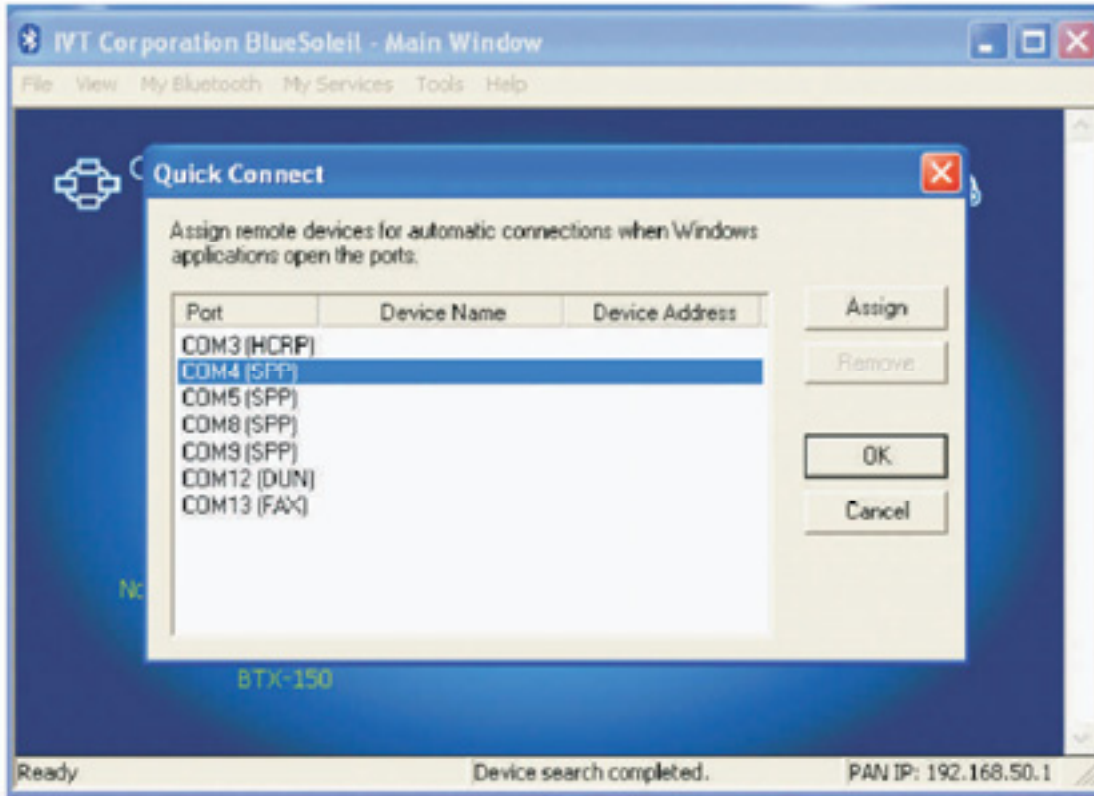


4 Assign COM Port. Tools→Configurations→Quick Connect..

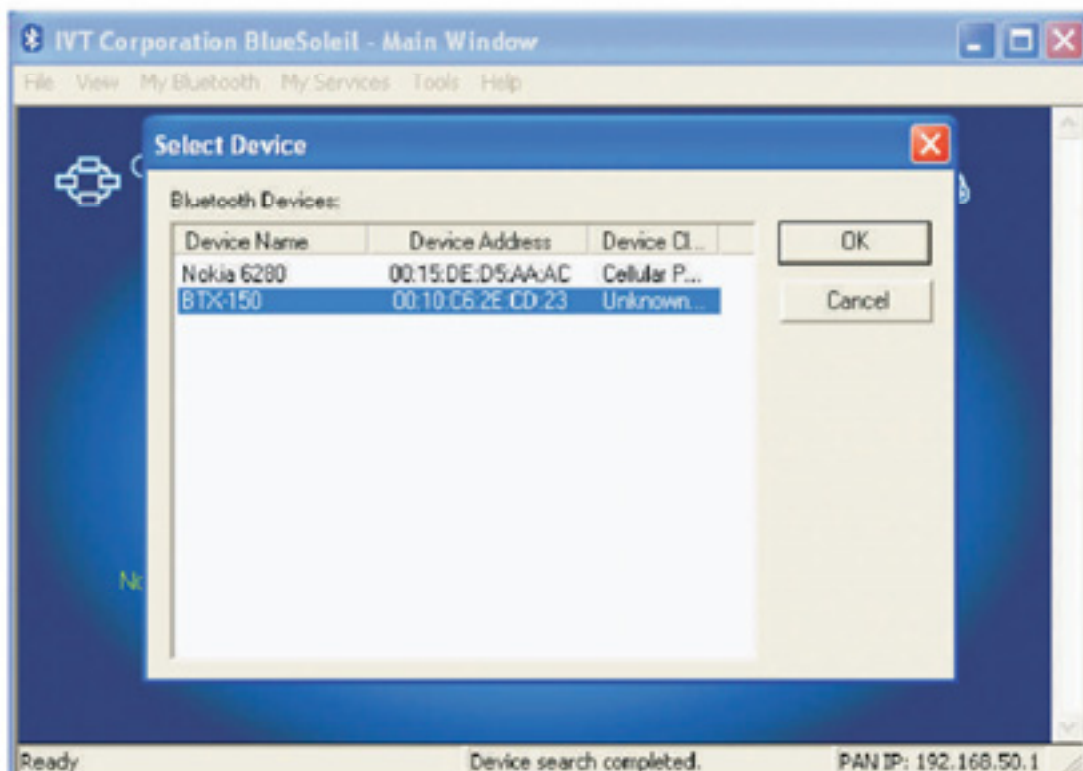


Setup IVT Bluesoleil Driver and parameters on the PC/ DTE

- 5** Select a com(spp) then press ASSIGN

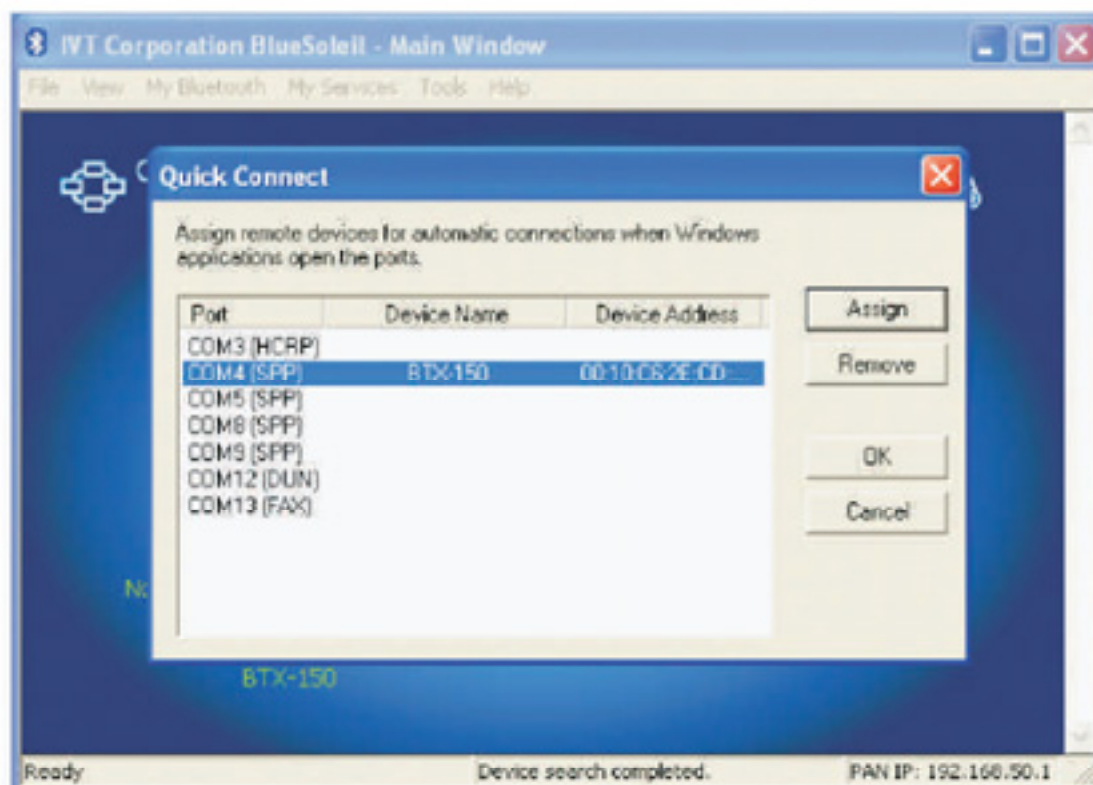


- 6** Select the BTX-150 then press OK

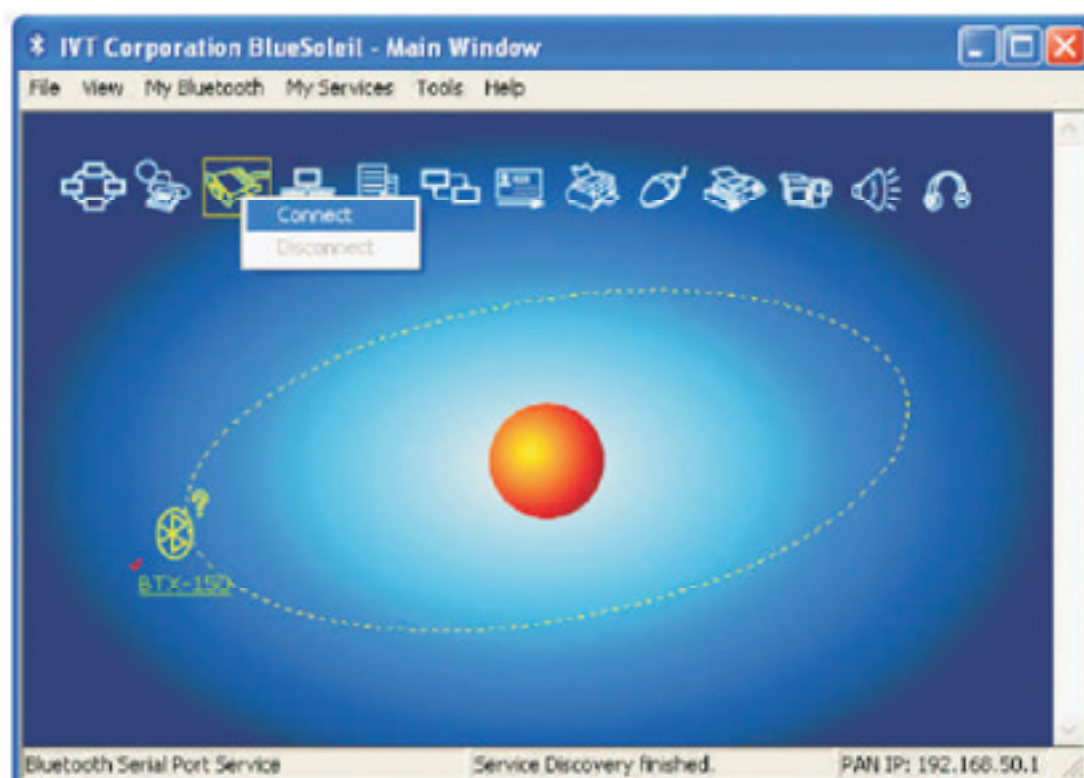


Setup IVT Bluesoleil Driver and parameters on the PC/ DTE

7 Screen show ASSIGNED Com port, then press OK

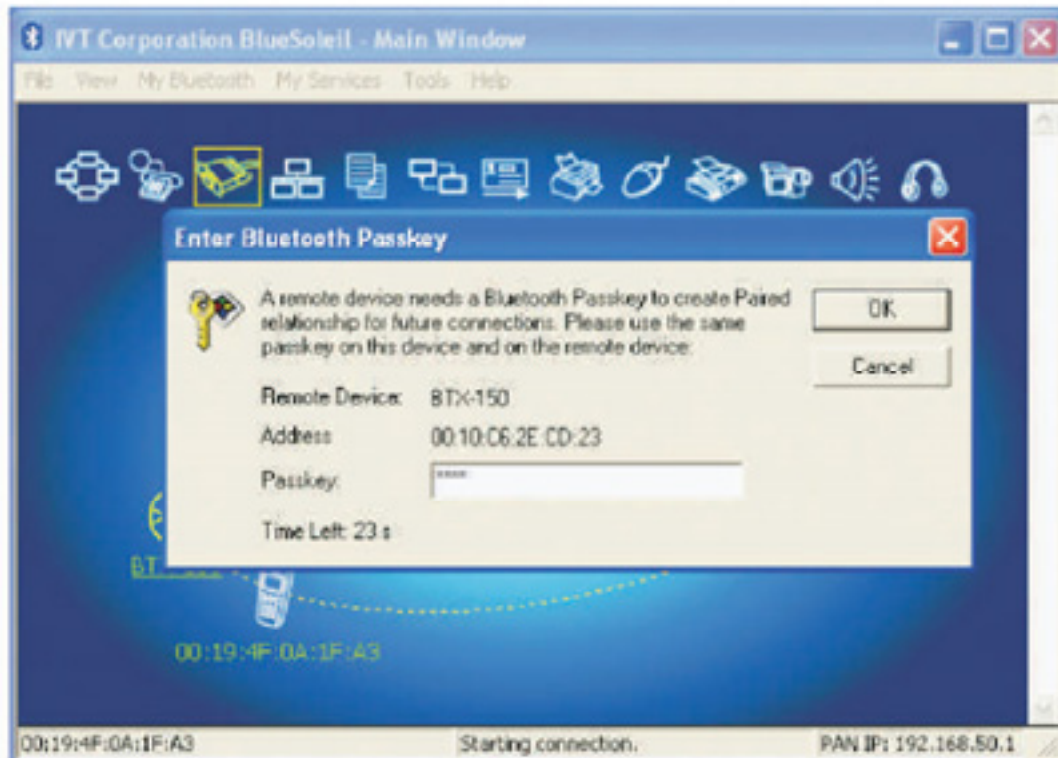


8 Make connection: Press mouse right button, then select connect

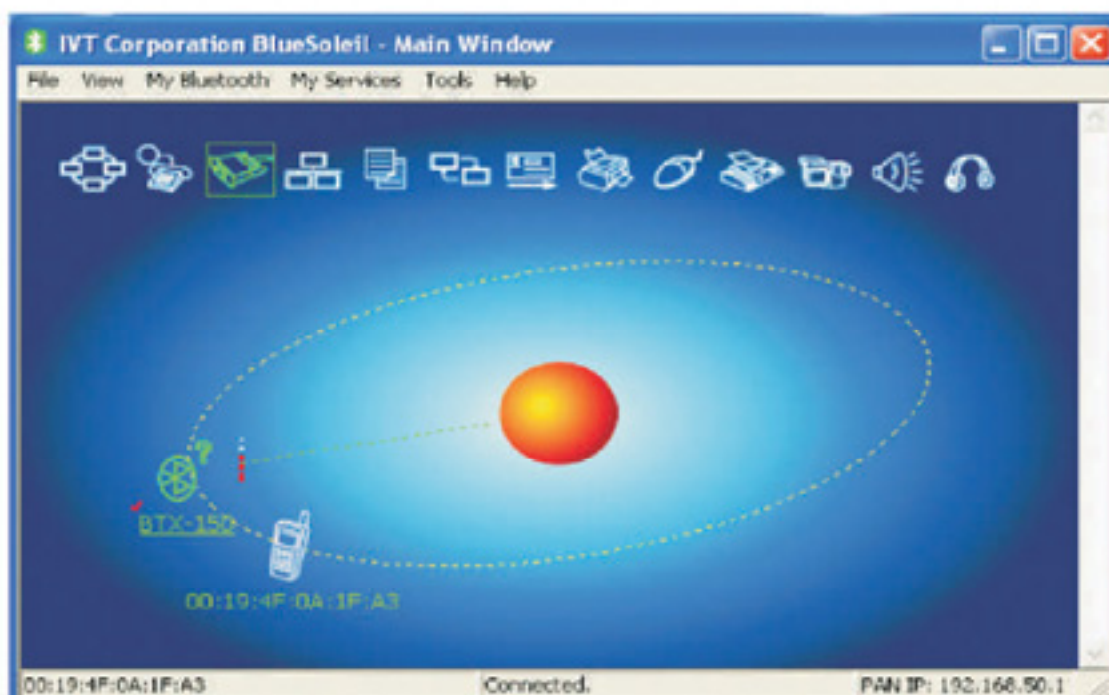


Setup IVT Bluesoleil Driver and parameters on the PC/ DTE

9 Enter the passkey: 1234, then ok

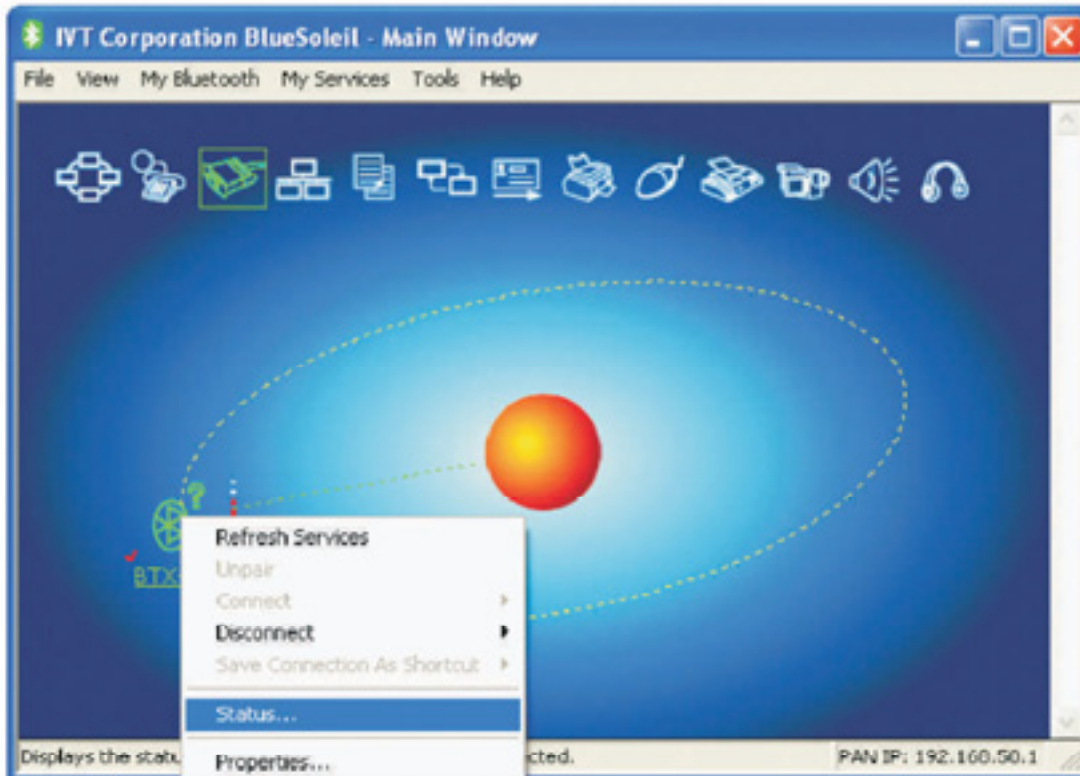


10 Screen will show the connected line. Connection succeed..

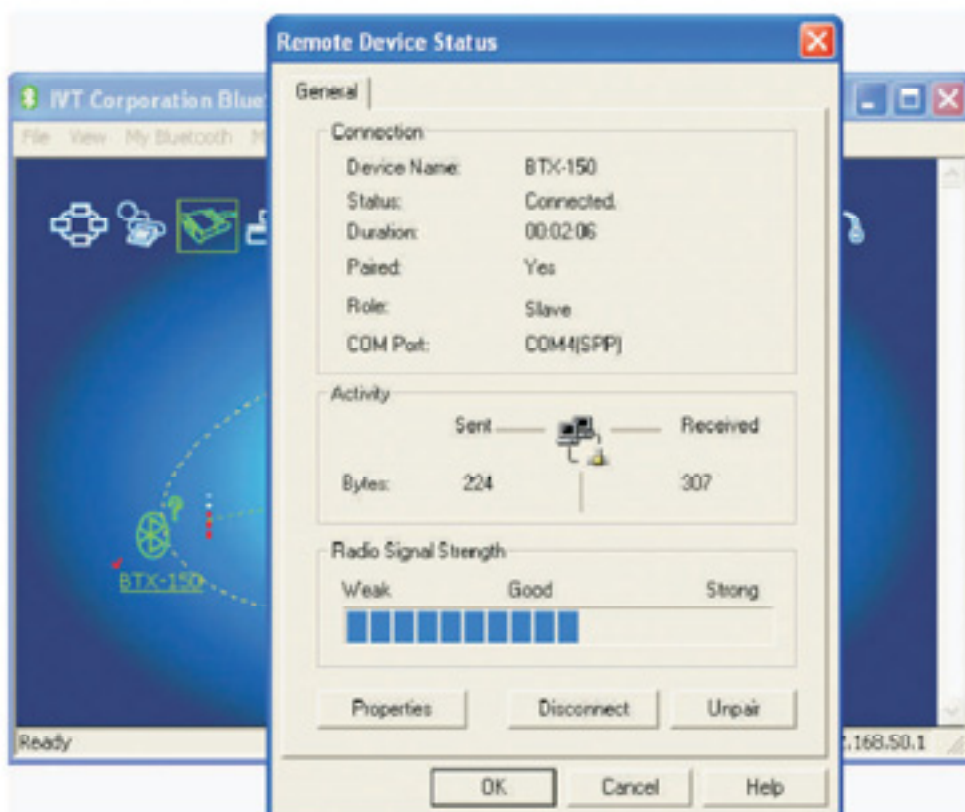


Setup IVT Bluesoleil Driver and parameters on the PC/ DTE

- 11** Check the connected status: press mouse right button then select status

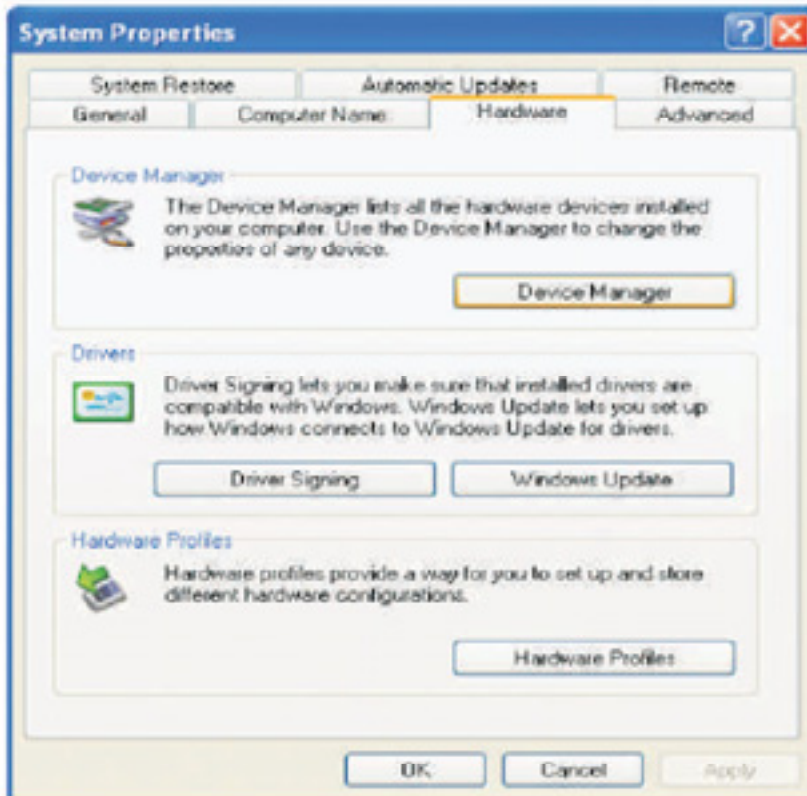


- 12** Screen show the connect status and press OK close

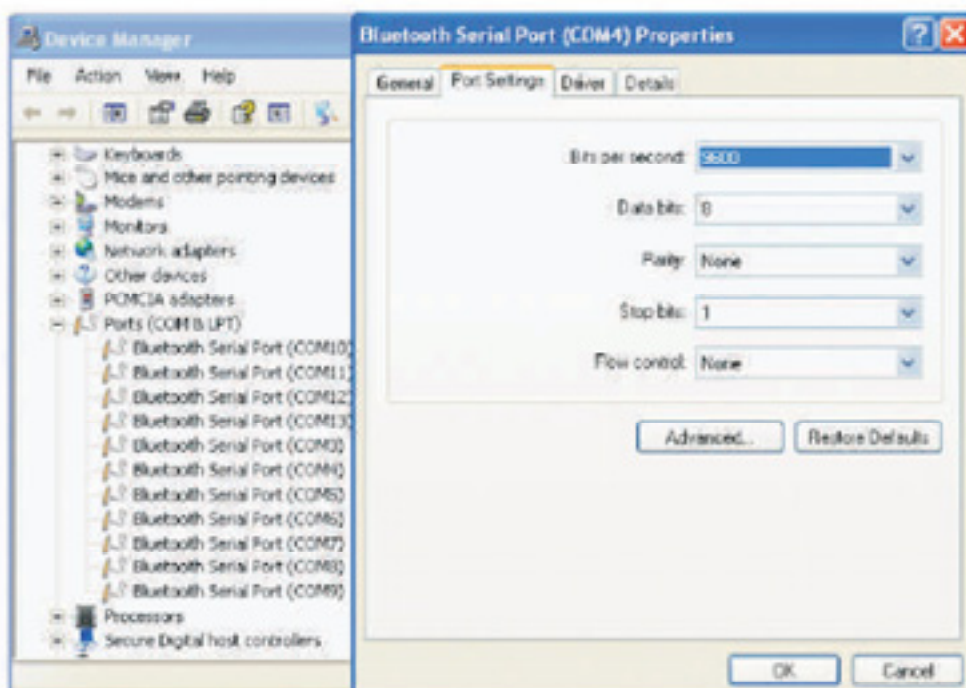


Setup IVT Bluesoleil Driver and parameters on the PC/ DTE

13 Check system com port properties: enter system device manager



14 Select the connected com port & make sure the properties are same as BTX-150 default. Then press ok



The wireless connection has done, may test the system

Future application structure (coming soon)

BT-iHUB to 7 BTX-150s Remote Control System

