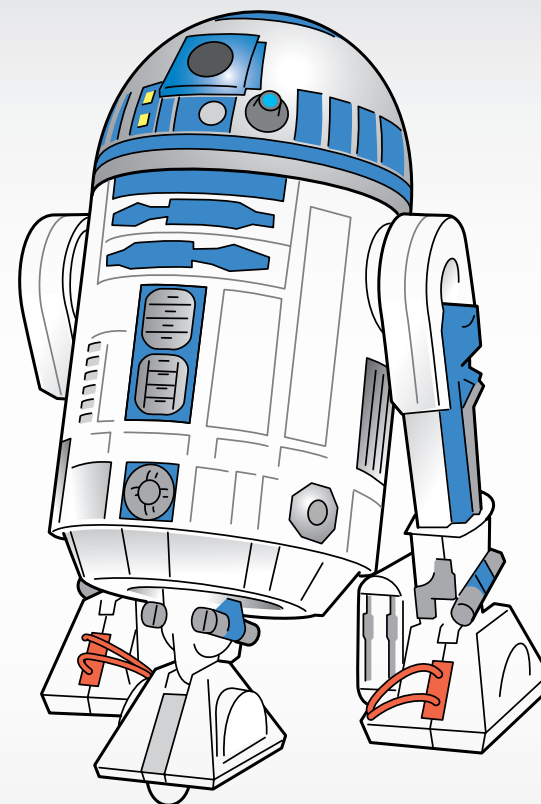
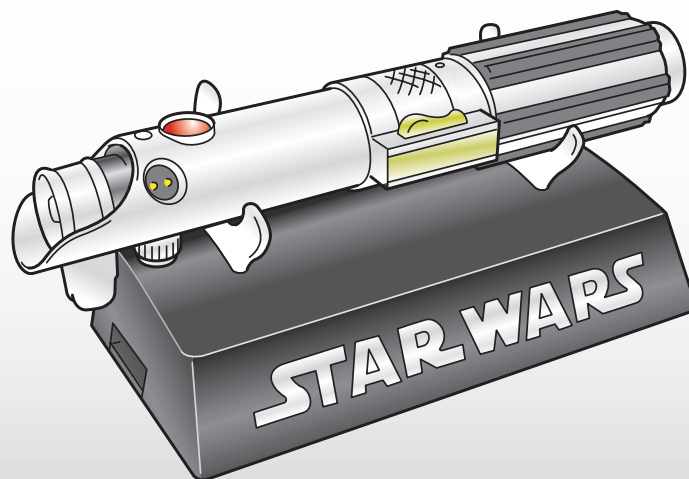


STAR WARS™

R2-D2™ WIRELESS WEBCAM WITH Skype™ Instruction Manual



This product uses a wireless USB camera. The image might not be clear depending on signal reception condition. The condition may improve if you change the orientation of R2-D2 or move it to a different location.



Message from Nikko

Thank you for purchasing this Nikko product.

Please read this manual carefully before use and observe the contents. After reading, keep this manual handy for future reference.

About Contents of This Instruction Manual

- Reproduction of this manual, in whole or in part, without prior consent of Nikko Co., Ltd. is strictly prohibited.
- The contents of this manual are subject to change without prior notice due to modification of the product.
- Nikko Co., Ltd. shall not be liable for any damages incurred as a result of use of this manual or this product.
- The contents herein are based on the Skype setting screens as of June 2007. Please note that service content, terminology, drawing and/or operations method are subject to change depending on revision of Skype service and/or update of Skype tools. For update information, refer to the Skype website (<http://www.skype.com/>).

About User Support

Nikko provides various services and supports to its registered users.

For questions or consultation about our products, please contact our User Support Center.

NIKKO HOME ELECTRONICS User Support Center

2801 Summit Avenue

Plano, TX 75074

Website

You can view our latest information on NIKKO HOME ELECTRONICS website at:

<http://www.nikkor2d2.com/>

About Trademark



Windows® is a registered trademark of Microsoft Corporation of the United States and/or other countries.

The official name of Windows is Microsoft® Windows® Operating System.



All other brand names and product names are trademarks, registered trademarks or products of their respective companies.

Trademarks such as ® and ™ are not mentioned in this manual.

SAFETY PRECAUTIONS

| | |
|---|---|
|  WARNING | This symbol denotes a hazard that can result in death or serious injury if the indication is ignored and the product is not properly operated. |
|  CAUTION | This symbol denotes a hazard that can result in personal injury and/or damage to property only if the indication is ignored and the product is not properly operated. |

Meaning for the picture display

| | |
|---|---|
|  | This symbol denotes prohibited action. |
|  | This symbol denotes compulsory action or instruction. |

WARNING



- Do not replace battery with wet hands.
Battery may get hot due to short circuit and could result in burn injuries or fire.

CAUTION



- Install batteries in the correct polarity (+ and -).
Wrong polarity could result in fire or burn injuries due to damage to the battery or battery fluid leakage.
- Recommend use AA alkaline dry cell batteries (LR6 type).
- In the event that leaked battery fluid goes into eye, immediately rinse the eye with plenty of running water and seek medical attention.

- If leaked battery fluid spills onto skin or clothes, immediately wash it off with water.
- External radio wave may cause malfunction of this product. In this case, use this product in other place or at another time.
- This product cannot work properly on an uneven floor or thick-piled carpet. Use this product on a flat surface.
- Make sure to switch off the product and remove batteries after use.
- Stop using this product immediately and remove batteries when there is abnormal smell or noise. Consult your dealer or Nikko.
Continued use of this product in such circumstance may cause fire or failure of this product.
- Wireless camera transmits images to computer using radio wave. Be cautious of intercept of transmitted images by any third party who uses a special intercepting method.



Improper use of battery may cause heat generation, burst or battery fluid leakage. Be cautious of the following points.

- Do not mix old and new batteries. Do not use any other battery other than the specified in this manual. Damage to battery or battery fluid leakage may cause fire or burn injuries.
- When using rechargeable battery (such as nickel-cadmium battery), make sure to observe the instruction manual of the charger.
- Do not use nickel-cadmium battery and alkaline battery together.

- Do not use charged and uncharged nickel-cadmium batteries together.
- Use the batteries with same capacity.
- Use the batteries of the same manufacturer and the same type.
- Do not use manganese battery. The power provided by manganese battery is insufficient for this product.
- Oxymide battery may not be used for this product.
- This product consists of precision electronic components. Do not drop this product from high place such as from the desktop nor apply strong impact onto this product.

Failure or damage may be caused.

- Do not disassemble this product.
- Do not place this product in a place subjected to high temperature such as near heating device including heater and stove.
- Do not place this product in a place subjected to low temperature including a place where dew condensation occurs.
- Do not put this product in fire.
- Do not splash water onto this product nor put this product in water.

Failure or damage may be caused.

- Do not allow small children to use this product.
- Keep this product out of the reach of small children.

Disclaimer

1. Reproduction of the contents herein, in whole or in part, is prohibited.
2. This product and/or this manual are subject to change without prior notice for further improvement.
3. Nikko Co., Ltd. assumes no liability for infringement of patent and any other rights of any third party arising out of use of data contained herein.
4. Nikko Co., Ltd. takes all possible measures to ensure the accuracy of this manual and the performance of this product. However, if you have any queries on this manual and/or this product, please contact us.
5. Nikko Co., Ltd. assumes no liability for any damage caused by loss of the memory in the hard disk due to wrong operation and/or failure. We recommend our users to make a backup of any important data frequently.
6. Nikko Co., Ltd. assumes no liability for any damage arising out of the specification and/or use of this product.
7. Please note that any failure and/or trouble of this product arising out of any failure/trouble of user's computer, loss of data or wrong handling is not covered under warranty.
8. Please note that operation or response of this product may become slow or be interrupted depending on the processing and transmission speed and/or task and traffic congestion of your computer and internet.
9. Nikko Co., Ltd. makes its best efforts to enhance the quality and reliability of its products. However, this does not guarantee that there is completely no defect in our products.

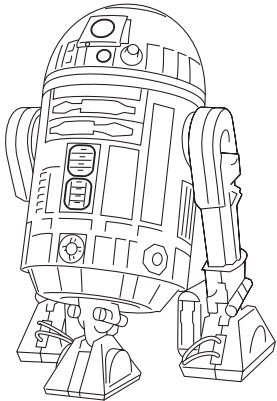
Table of Contents

| | |
|--|----|
| Safety Precautions | 3 |
| Table of Contents | 5 |
| Accessories | 6 |
| Connectable Personal Computers | 7 |
| Parts Identification and Function | 8 |
| R2-D2 (Web camera) | 8 |
| Lightsaber (USB phone) | 9 |
| Stand (Controller) | 11 |
| Install Software | 12 |
| Software To Be Installed | 13 |
| Check Before Installation | 14 |
| Installation Procedures | 16 |
| New Hardware Search Wizard | 33 |
| Confirm the Installation Result | 36 |
| Preparation Before Use | 38 |
| Install Batteries | 38 |
| USB Cable Connection | 40 |
| Stand R2-D2 | 40 |
| Turn on R2-D2 Power | 41 |

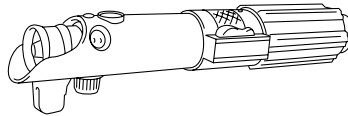
| | |
|--|----|
| How to Use | 42 |
| Start Software | 42 |
| Operate Camera Viewer | 43 |
| Operate R2-D2 | 47 |
| Talk on Skype | 52 |
| Operate R2-D2 in The House from Outside Location [Skype Mode] | 54 |
| Sound Action of Lightsaber | 61 |
| Camera Viewer Settings | 62 |
| Uninstall Software | 66 |
| SkypeAPI | 66 |
| Dialer | 66 |
| ffdshow | 67 |
| Camera Viewer | 67 |
| R2-D2 Launcher | 68 |
| Skype | 68 |
| Troubleshooting | 69 |
| Specifications | 74 |

Accessories

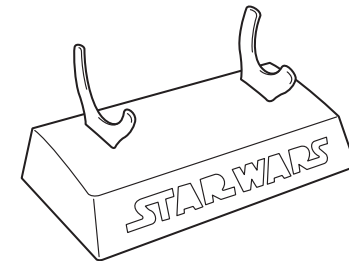
The following accessories are provided with the product.
Please check if all accessories are included in the package.
If any of the accessories is not provided, contact your dealer
or Nikko Co., Ltd.



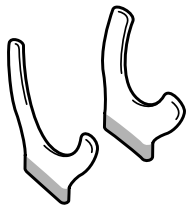
R2-D2 (Web camera) 1 unit



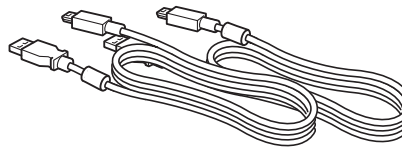
Lightsaber (USB phone) 1 unit



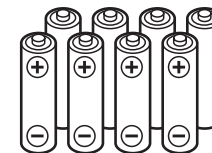
Stand (controller) 1 unit



Display Rod 2 units



USB cable 2 units
(For lightsaber : 1m x 1 unit)
(For stand : 2m x 1 unit)



8 AA alkaline dry-cell batteries

| | |
|--|--------|
| Installation CD (contains instruction manual data) | 1 unit |
| Quick setup guide | 1 unit |
| Installation guide | 1 unit |
| Warranty card | 1 unit |

Connectable Personal Computers

The system requirements for use of this product are as outlined below.

- ※ Meeting the following requirements does not guarantee all performance of this product.
- ※ System specifications meeting or exceeding the recommended requirements may be required depending on environment for use of this product, number of contents and/or capacity.

• Supported OS

Microsoft Windows 2000 Professional SP4

Microsoft Windows XP Professional SP2

Microsoft Windows XP Home Edition SP2

IBM PC/AT compatible PC (DOS/V PC) with preinstalled:

Memo

To install and use this software using Windows 2000 Professional, Power Users (standard user) or Administrator rights are required. When using Windows XP, administrator rights are required.

• CPU

1.8GHz and above is recommended. (For a laptop PC, Intel Pentium III 733MHz and above is recommended.)

• Memory

256MB and above

• Disk drive

CD-ROM drive is required.

• USB port

USB2.0 is required.

• Free hard disc space

100MB and above

• Display

Video card with VRAM 16MB or higher

800x600 pixels or higher resolution and High Color (16-bit, 65,000 colors)

Direct Draw driver supported.

Note: This product does not work properly if the display is below 800x600 pixels and 256 colors or less.

• Required software

Direct X version 9.0c or higher

Skype software is required. (Please download from the Skype website.)

Memo

This software supports DirectX technology.

DirectX needs to have been installed to use this software.

Memo

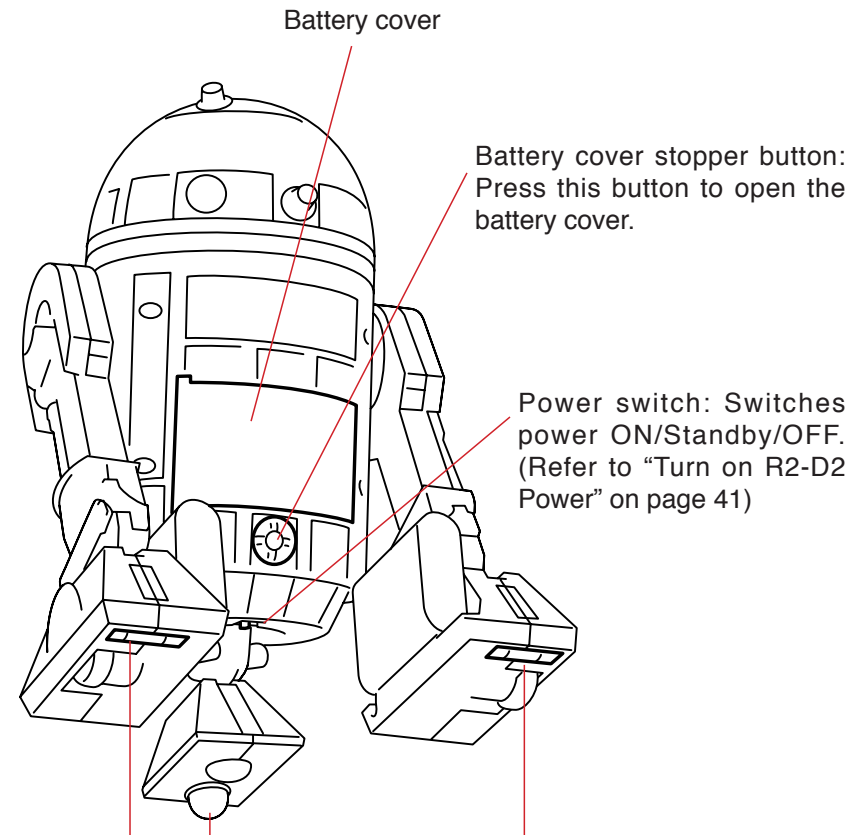
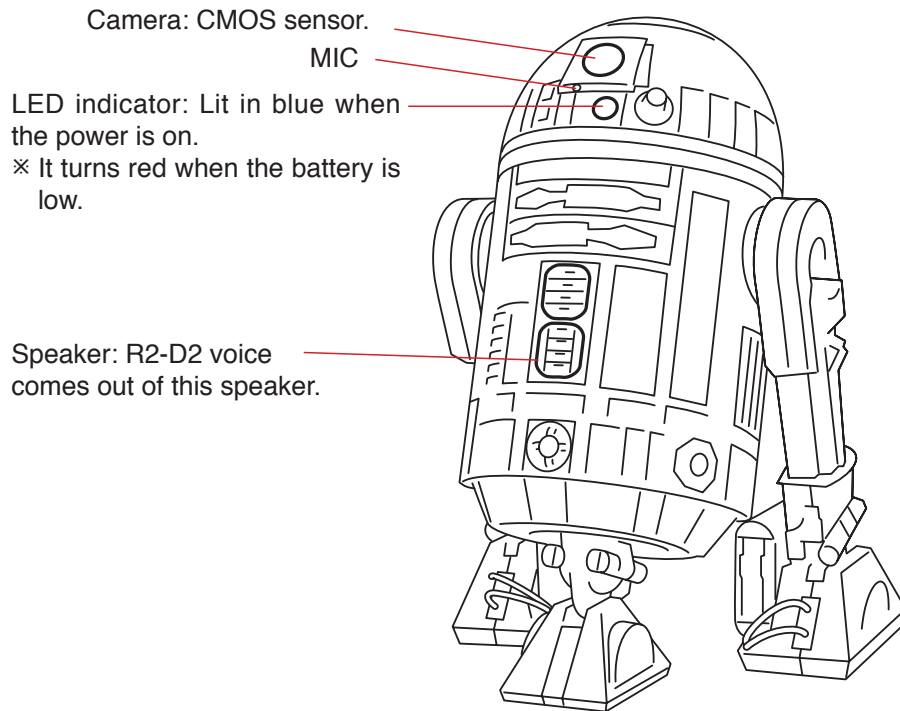
For how to check DirectX version, refer to “Please check before Installation” on page 14.

• Internet connection

Broadband access is required.

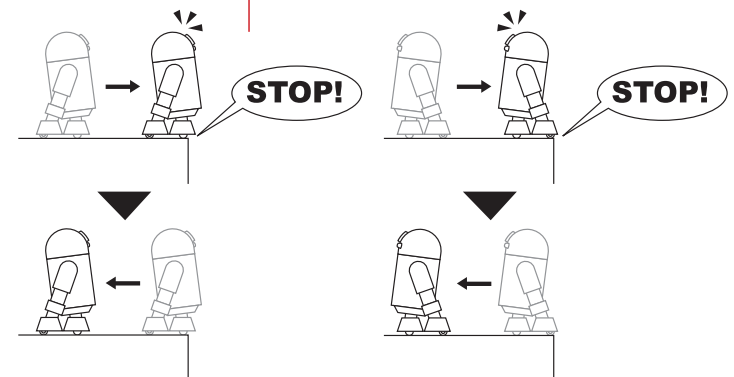
Parts Identification and Function

R2-D2 (Web camera)



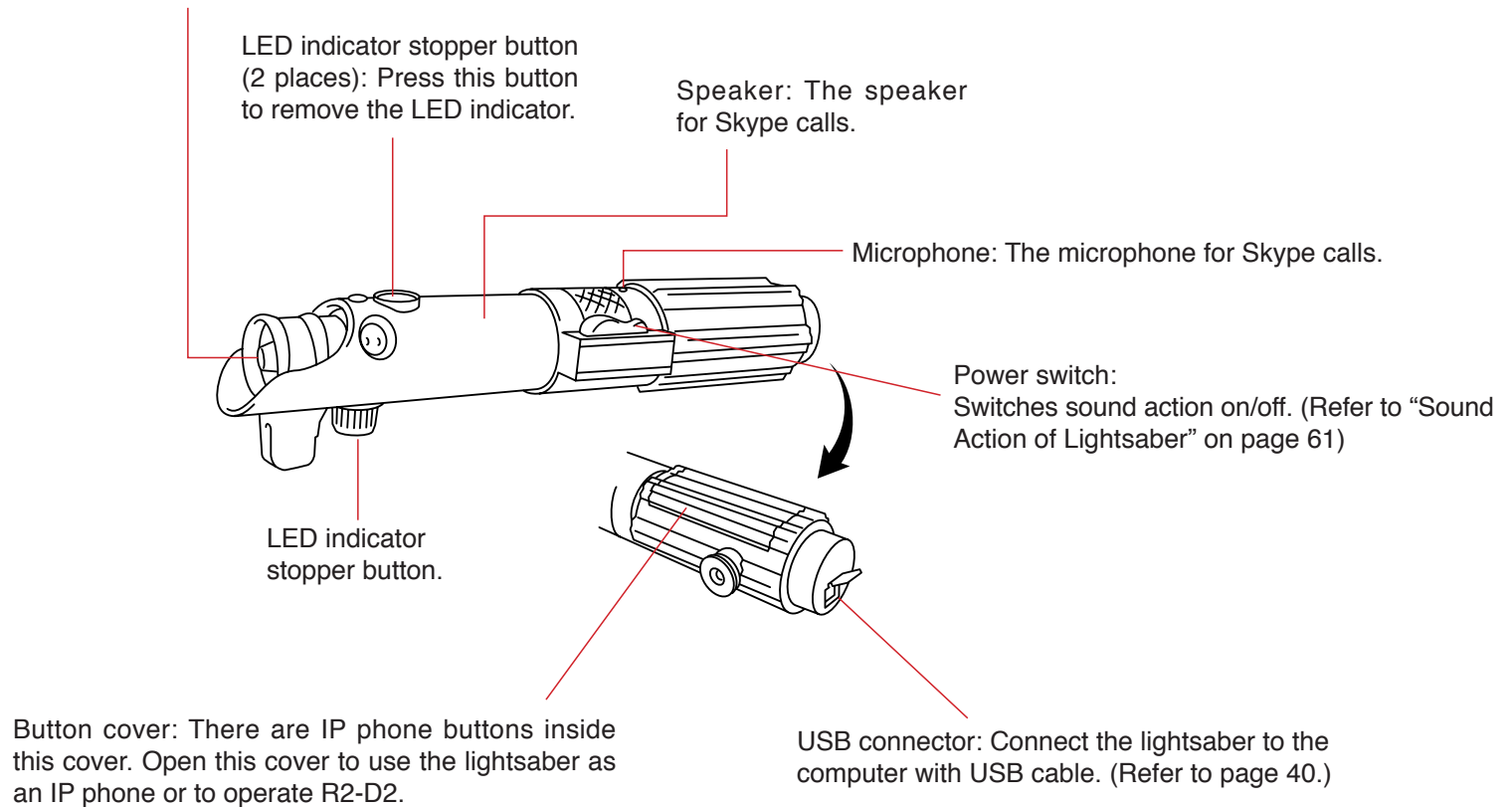
Fall prevention sensor: The sensor to prevent R2-D2 from falling off the table edge, etc.
This sensor may detect unevenness of the path and avoid the fall (by pausing or turning around).

× Please note that the fall prevention sensor cannot always detect difference in surface level.

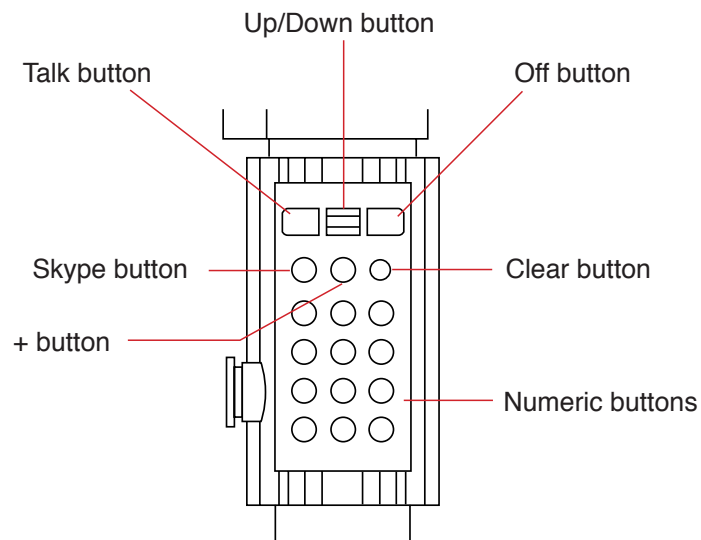


Lightsaber (USB Phone)

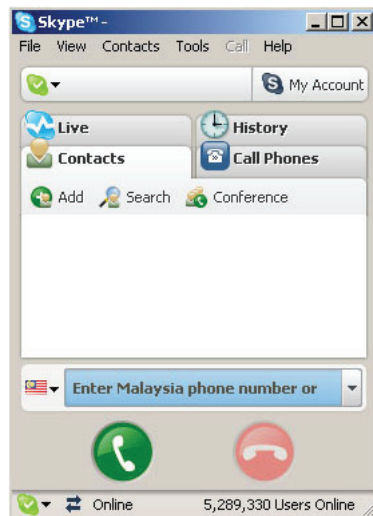
LED indicator: Lit in red when the lightsaber is connected to the stand and computer with USB cable. Lit in blue when the power is on. It is also used as the battery cover.



Button List



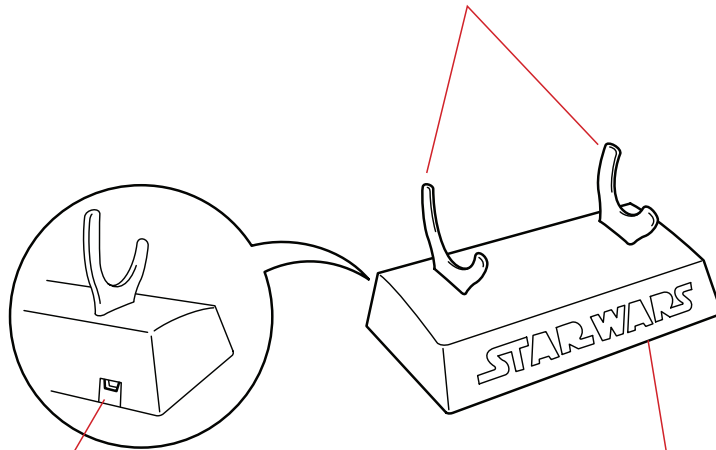
Display Contact List



| Button Name | Function |
|-----------------|---|
| Talk button | Start dialing once this button is pressed after key in the phone number by using numeric buttons. Press this button when receiving call to enter talk mode. Dialed numbers and received numbers can be searched for convenience of redial. |
| Up/Down button | Use this button to move cursor to select a number from the contact list, etc. |
| Off button | Skype window is minimized if this button is press in standby mode. Pressing this button during call disconnects the call. Pressing this button while receiving a call rejects the call. Pressing this button during set up closes the set up display. Pressing this button while making a call ends the call. |
| Skype button | Skype pops up on the screen and the contact list appears. |
| + button | Key in the first symbol for international calls (+) for SkypeOUT. |
| Clear button | Pressing this button once erases one keyed-in number. Continuous pressing this button erases all the numbers. |
| Numeric buttons | Key in the phone number. (Refer to "Talk on Skype" on page 52.) Also used for operation of R2-D2. (Refer to "Operate with Lightsaber" on page 50.) |

Stand (Controller)

Arm: Insert into the stand. Narrower side of the hook comes to the grip side of the lightsaber.
Please change the installing position as you like.



USB connector:
Connects to computer
with USB cable.

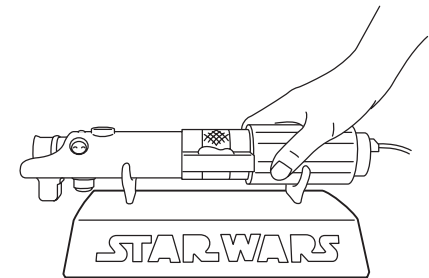
Lamp: The letters lights up if
connected to computer.

※ The lamp may not turn off
even if computer power
is turned off. In this case,
disconnect USB cable
from the stand.

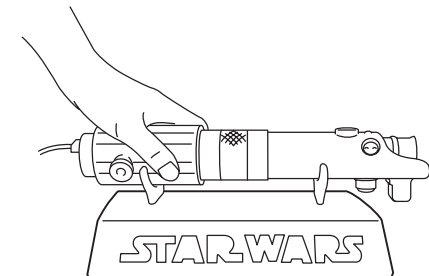
Memo

Place the lightsaber on the stand in a horizontal position.

If you are right-handed



If you are left-handed



Install Software

Install the software necessary for use of this product into computer.

Memo

Before installing the software, perform the followings referring to “Preparation Before Use” on page 38.

- Install batteries in R2-D2
- Turn on R2-D2 power
- Connect computer, stand and lightsaber with USB cable

Software To Be Installed

Software listed below needs to be installed to use this product.

- **Skype**

Memo

For download, installation and operation method of Skype, refer to Skype website (<http://www.skype.com/>).

- **Viewer and driver**

- USB device driver
- Camera viewer
Software to display the images taken with R2-D2 camera on computer
- MPEG4 codec

- **Dialer**

Dialing software to make a call using lightsaber.

- **Screen Key**

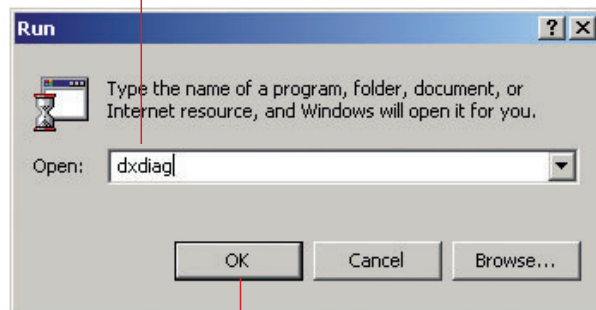
Software to operate R2-D2

Check Before Installation

Make sure that your version of DirectX is 9.0c or higher.

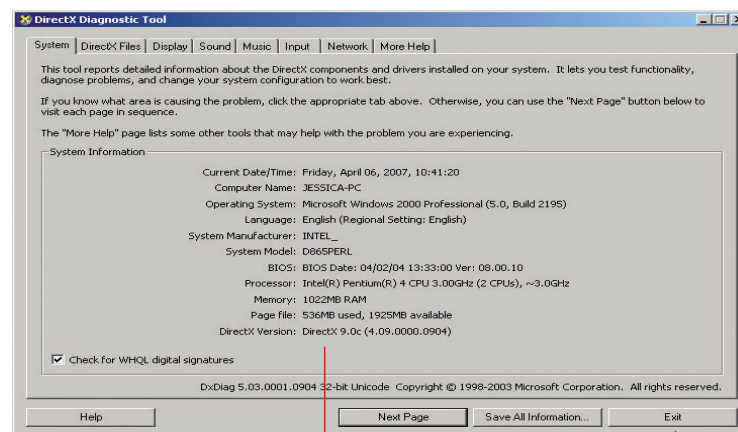
- 1 Startup the computer.
- 2 Click [Start] – [Specify File Name and Execute].

- 3
- 1) Key in "dxdiag"



- 2) Click

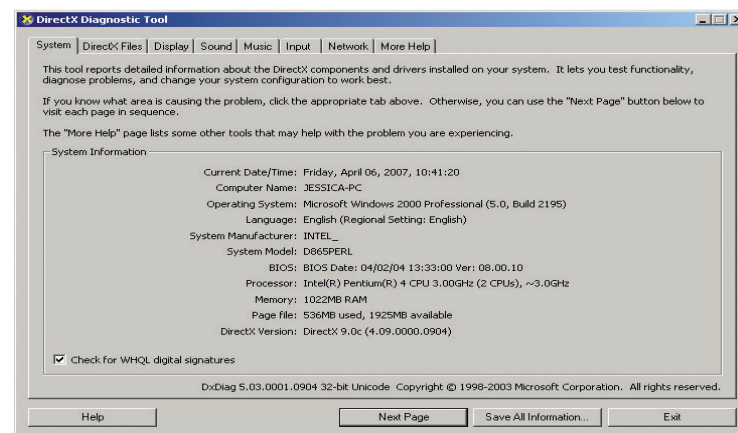
4



1) Make sure that "DirectX9.0c" is displayed

2) Click

If your version of DirectX is older than 9.0c, download and install the latest version from Microsoft homepage (<http://www.microsoft.com/windows/directx/default.msp>).



Installation Procedures

Install driver and software from the provided installation CD.

Note: • Before starting installation, close all applications on your computer.

- 1 Startup the computer and insert the installation CD into CD-ROM drive.
Installer starts.

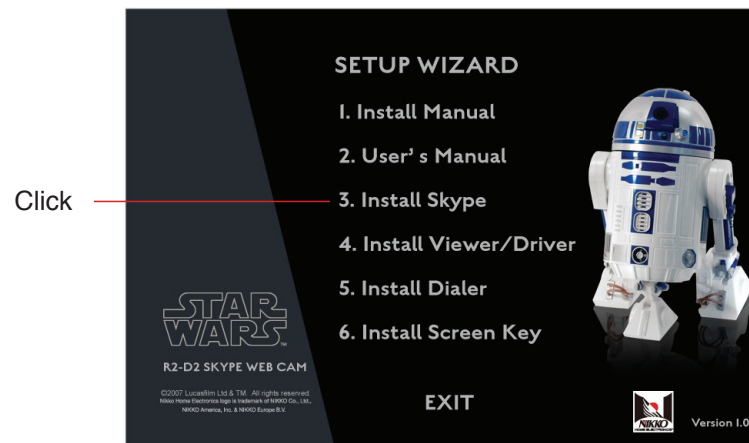
Memo

When installer does not start automatically

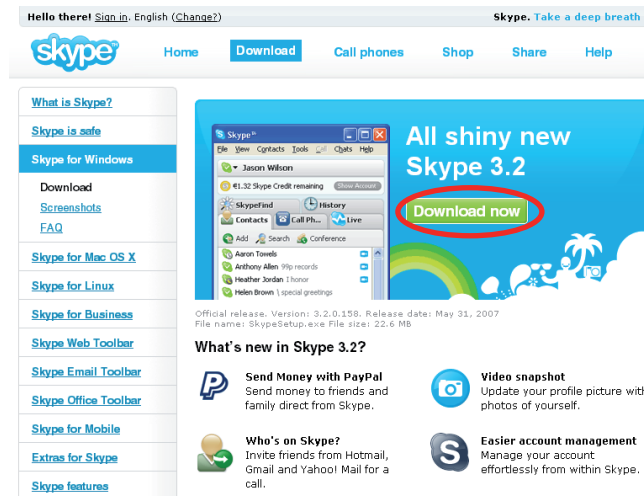
Double-click and open the CD-ROM drive icon on [My Computer], then double-click the “R2D2MENU.exe” file.

Recommend high speed broad band line to download and connect during Skype software installation and operation.

- 2 Install Skype if it is not installed.

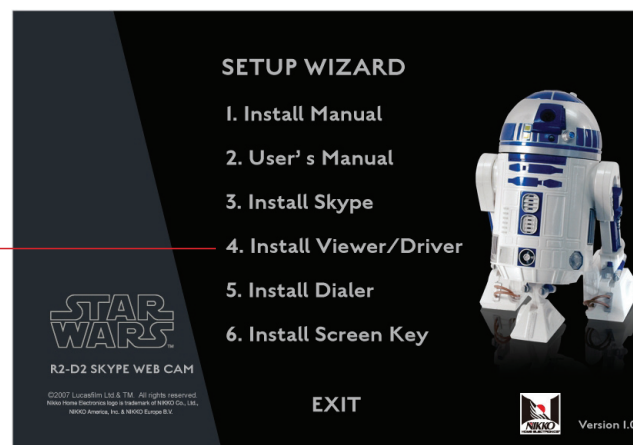


For further Skype installation procedures, refer to Skype website (<http://www.skype.com/>).

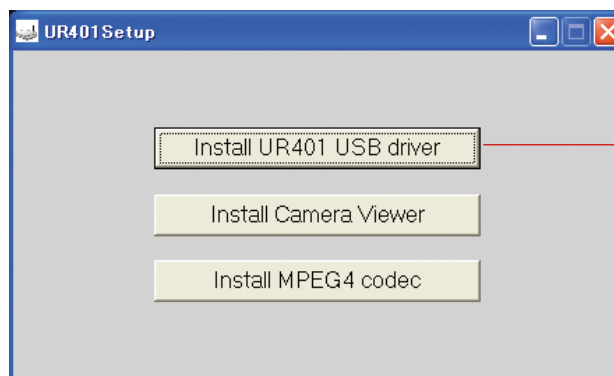


3 Install USB driver and viewer.

Click



4 Install driver.



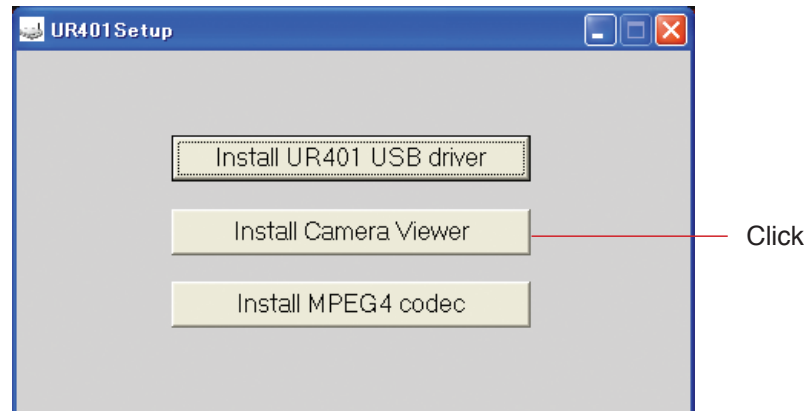
File will be copied.

Memo

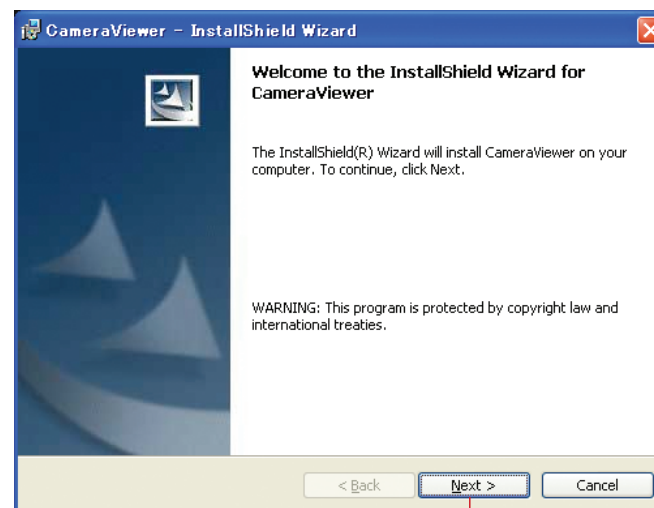
Click [Yes] if the screen below is displayed.



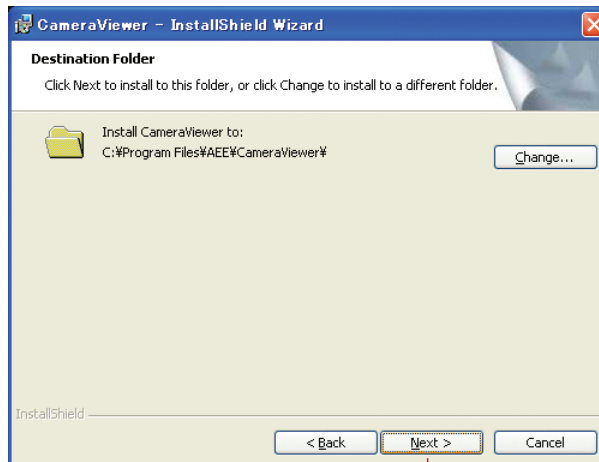
5 Install camera viewer.



6



7

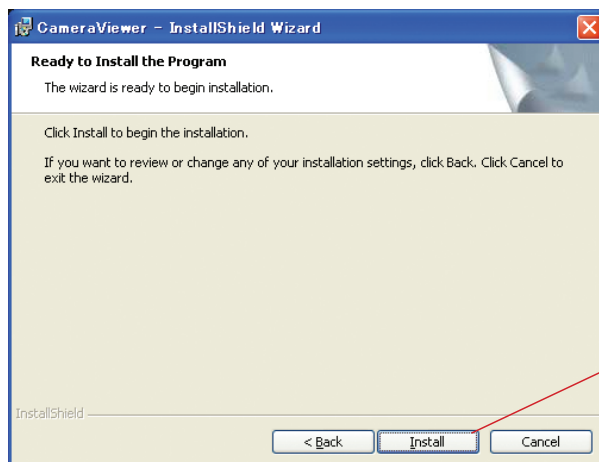


Click

Memo

If you wish to change destination folder, click on the [Change] button and specify the desired location.

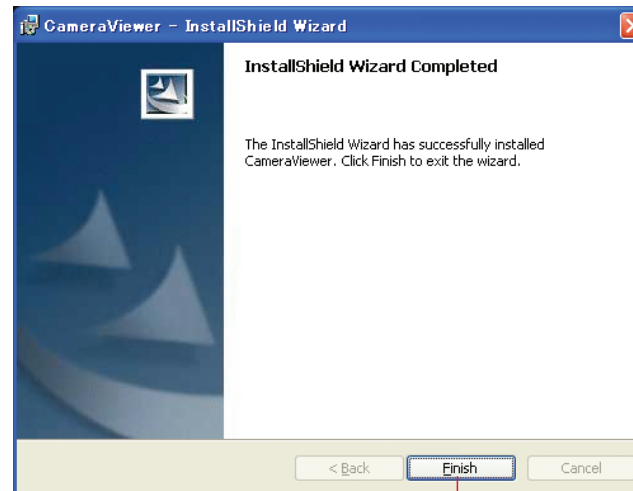
8



Click

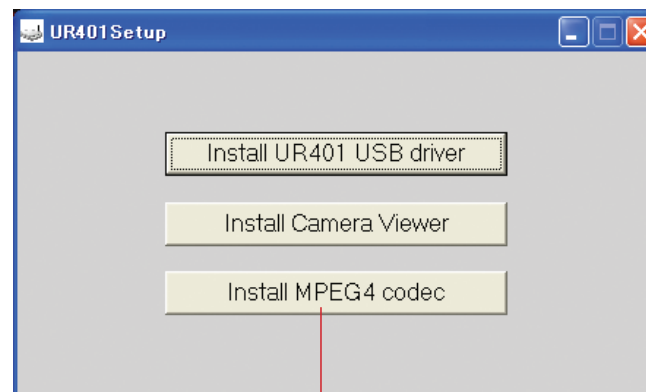
File will be copied onto the computer.

9



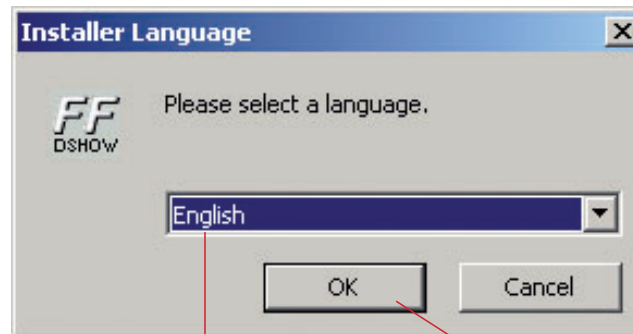
Click

10 Install MPEG4 codec.



Click

11



1) Select installer language (Default is English)

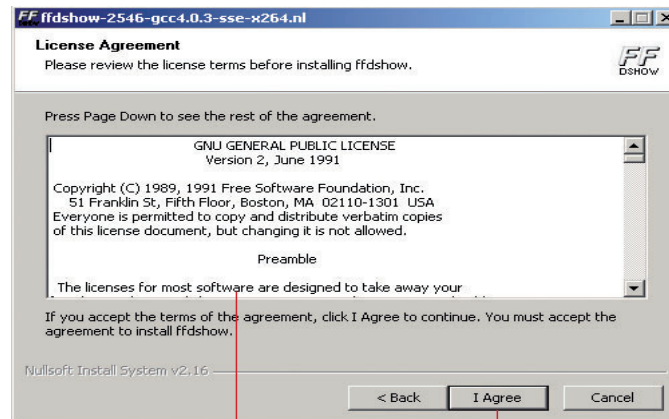
2) Click

12



Click

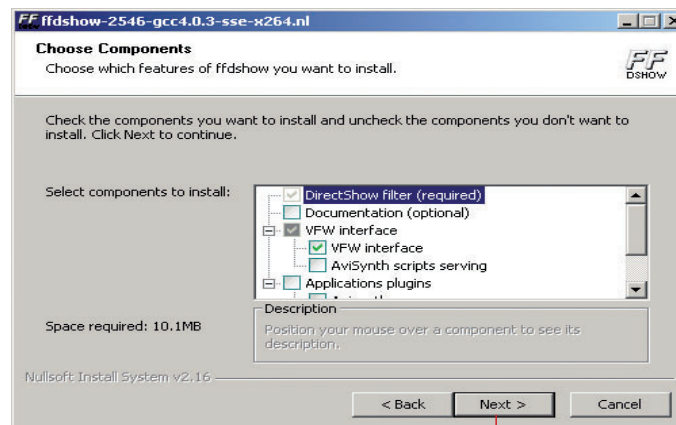
13



Confirm the contents

Click

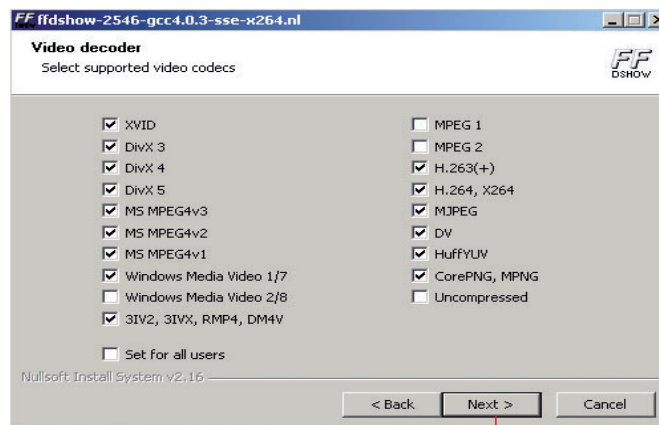
14



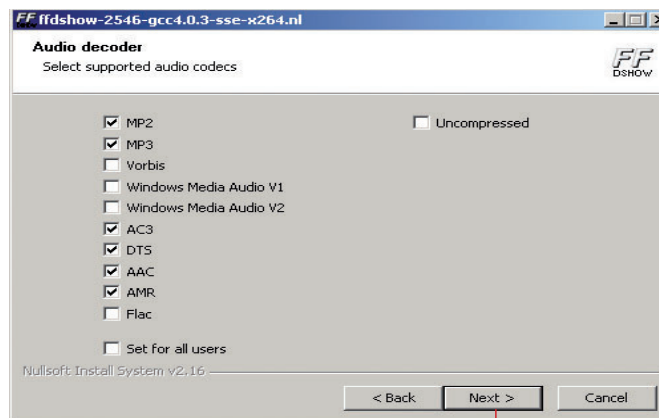
Click

15

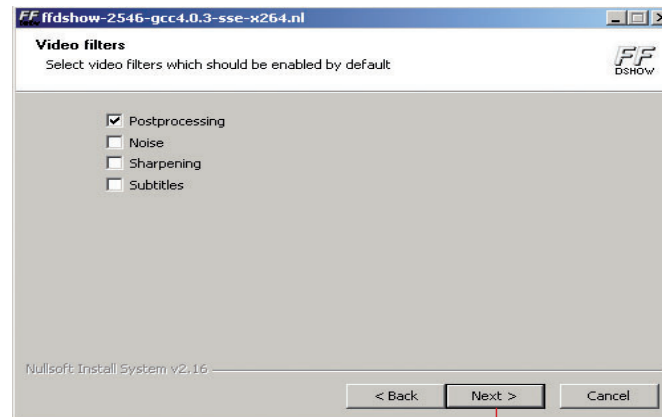
Configure the settings of video decoder and video filter.



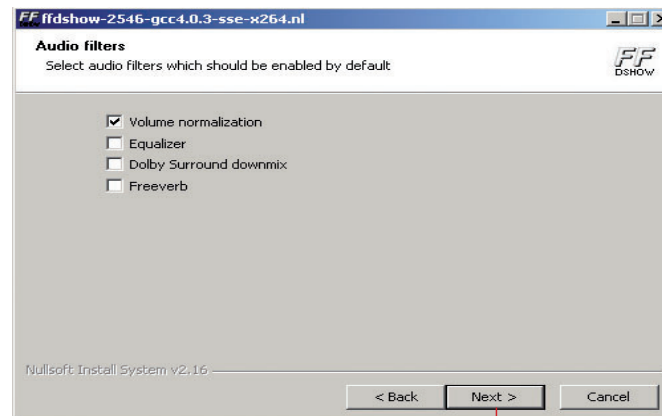
Click



Click

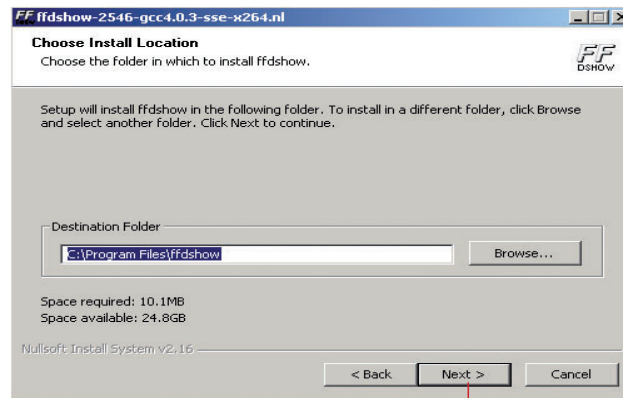


Click



Click

16

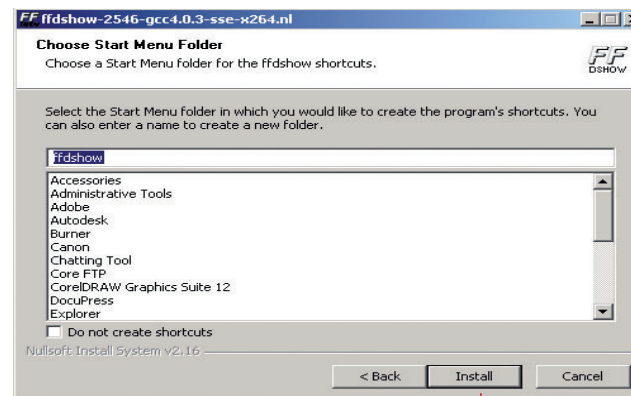


Click

Memo

If you wish to change destination folder, click on the [Browse] button and specify the desired location.

17



Click

File will be copied onto the computer.