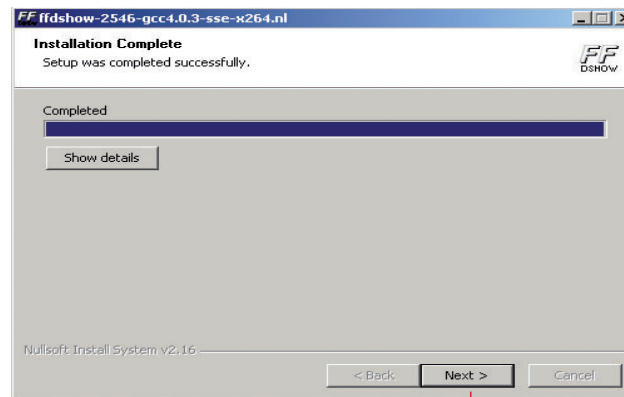
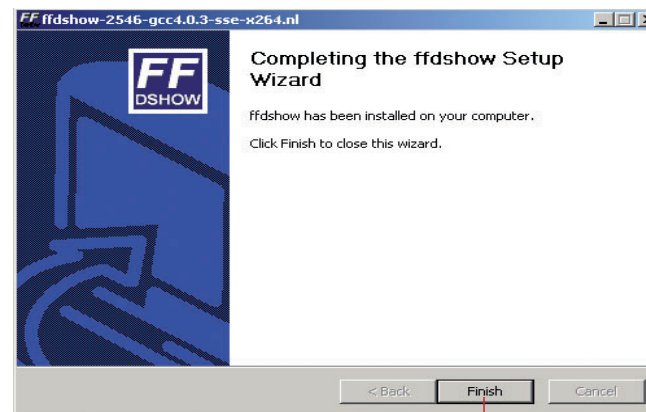


18



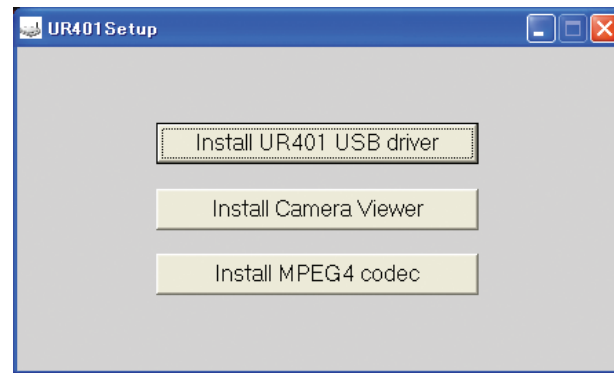
Click

19



Click

20



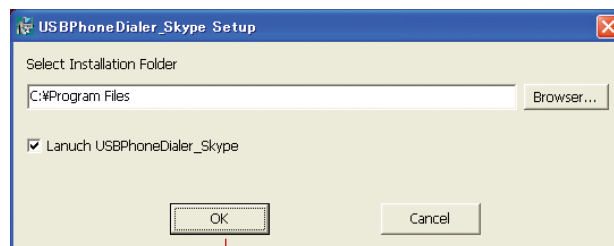
Click

21 Install dialer.



Click

22



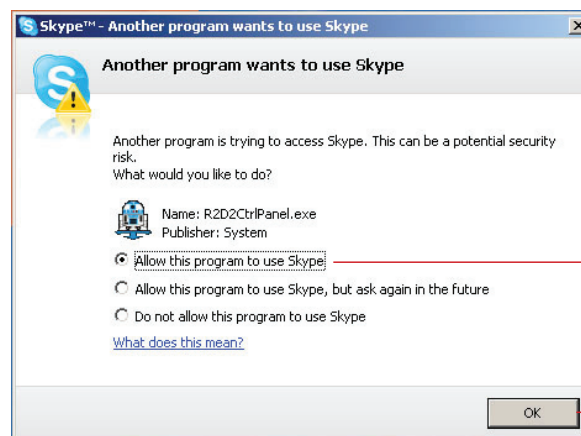
Click

File will be copied onto the computer.

Memo

If you wish to change installation folder, click on the [Browser] button and specify the desired location.

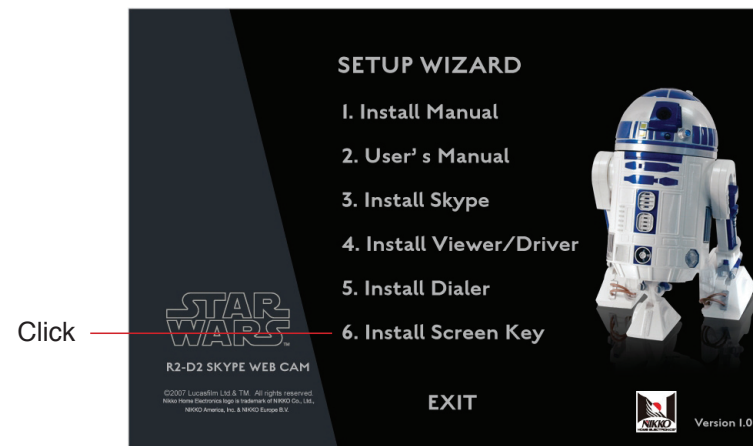
23



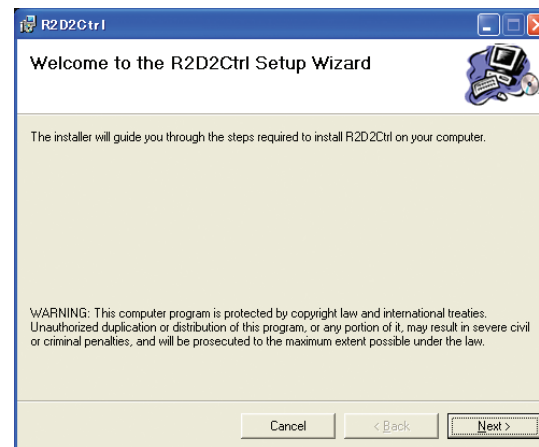
Click

Click

24 Install screen key.

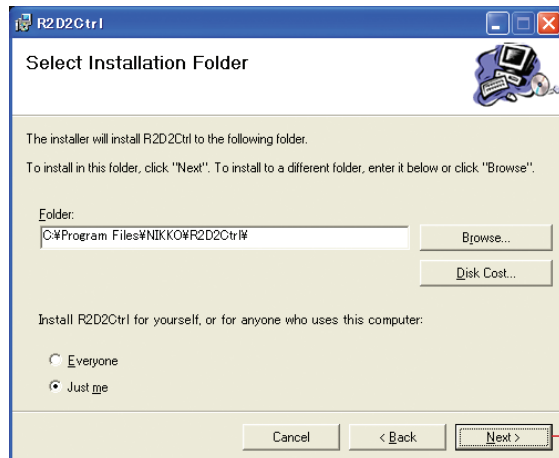


25



Click

26

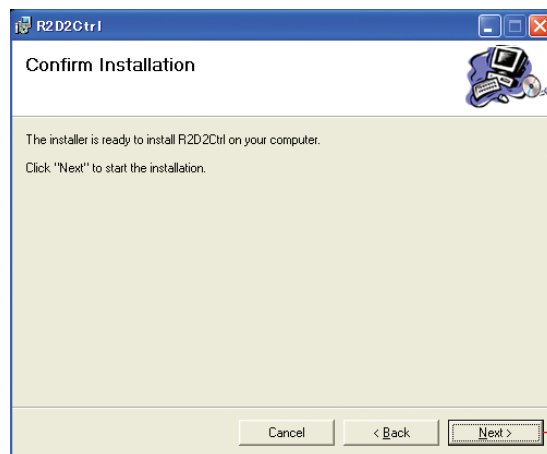


Click

Memo

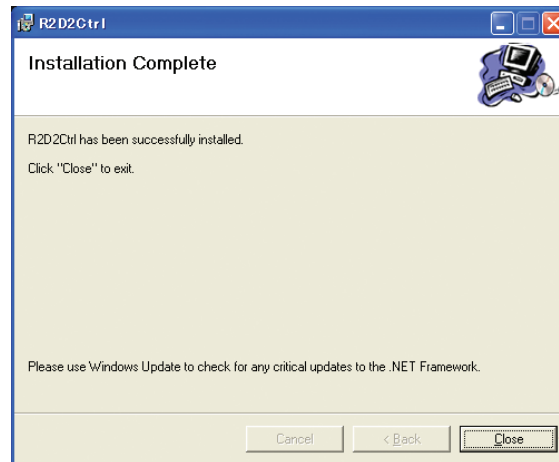
If you wish to change installation folder, click on the [Browse] button and specify the desired location.

27



Click

28



Click

29



Click

Software installation has completed. Next, proceed with the New Hardware Search Wizard.

New Hardware Search Wizard

This wizard is to confirm that the driver and/or software have been successfully installed.

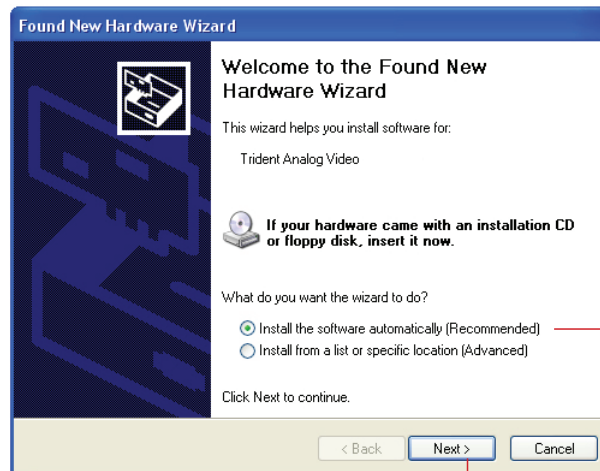
1

Make sure that the camera viewer is not activated.

2

Connect the stand to the computer with the USB cable. (Refer to page 40.)

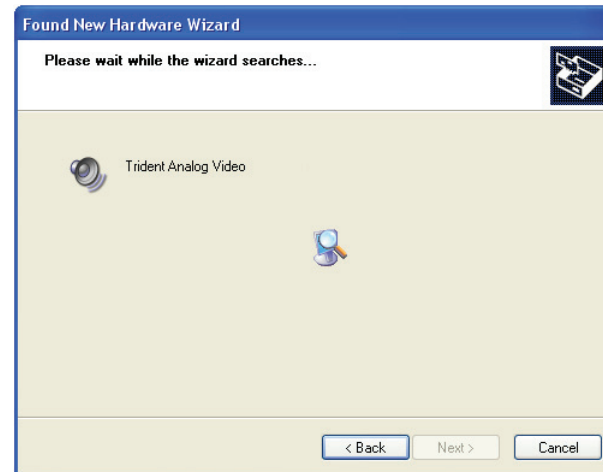
3



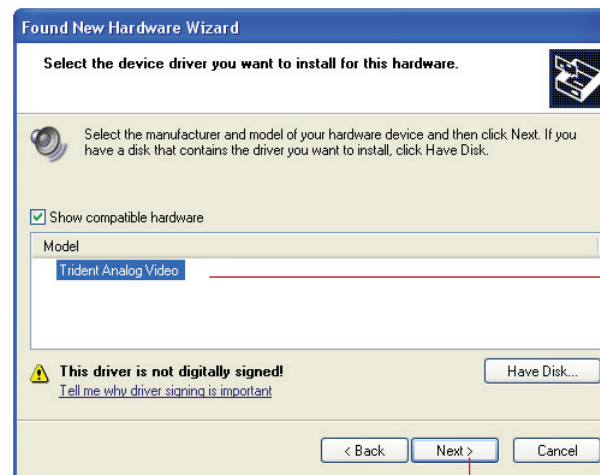
1) Click to select.

2) Click

The search starts and the screen shown below will be displayed. The search takes a few minutes to complete.



4



1) Click to select.

2) Click

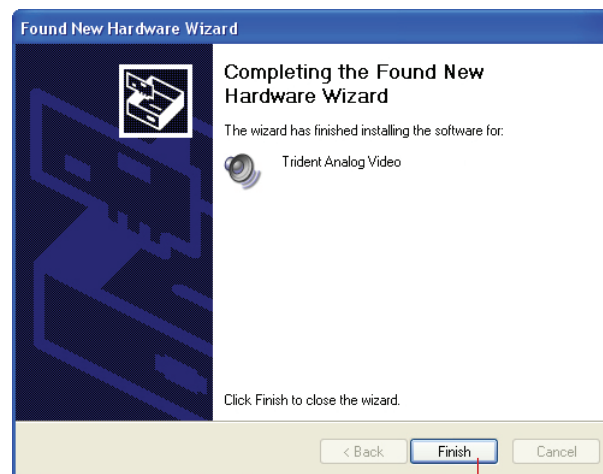
5



2) Click

Installation starts.

6



2) Click

Confirm the Installation Result

Confirm if driver and software have been installed successfully.

Confirm driver installation

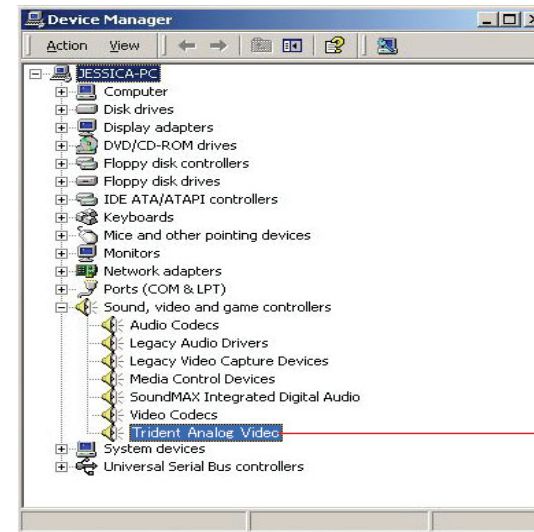
1 Connect computer, stand and lightsaber with USB cable.
(Refer to “USB Cable Connection” on page 14)

2 Click [Start] – [Settings] – [Control Panel].

3 Double-click the “System” icon.

4 Click the [Hardware] tab and [Device Manager] button.

5



Make sure that this has been added

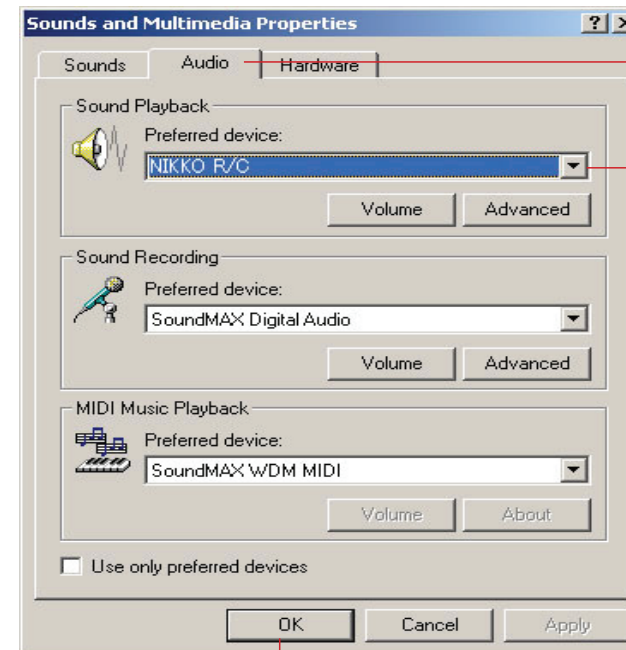
Memo

If “!” mark is attached to Trident Analog Video, disconnect the USB cable from computer and reconnect it.

Confirm audio device installation

- 1 Connect computer, stand and lightsaber with USB cable.
(Refer to “USB Cable Connection” on page 40)
- 2 Click [Start] – [Settings] – [Control Panel].
- 3 Double-click the [Sound and Audio] icon.

4



1) Click

Make sure that “NIKKO R/C” has been selected

3) Click

Memo

If “NIKKO R/C” has not been selected, display the list and select “NIKKO R/C”.

Preparation Before Use

Install batteries in R2-D2 and lightsaber. Connect computer, stand and lightsaber with USB cable.

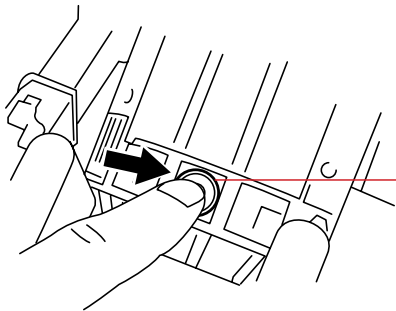
Install Batteries

Install dry cell batteries in R2-D2 and lightsaber.

Note: Make sure to use AA alkaline dry cell batteries.

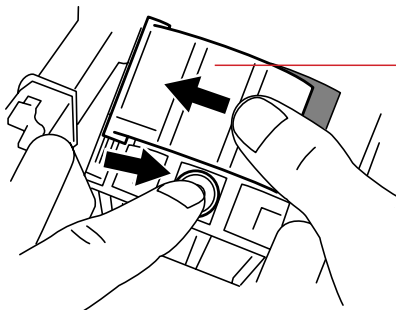
R2D2

1



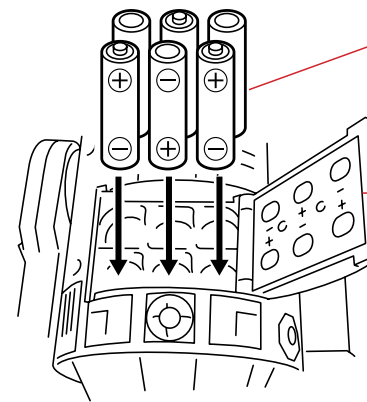
Press the battery cover stopper button on the rear side

2



Slide the battery cover to the left while pressing the battery cover stopper button.

3

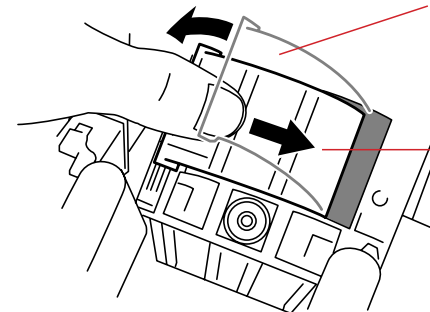


2) Install batteries

1) Open the battery cover

Note: Be careful of the battery polarity when installing the batteries.

4



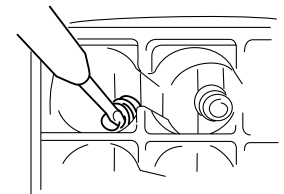
1) Close the battery cover

2) Slide the battery cover to the right until it clicks.

Memo

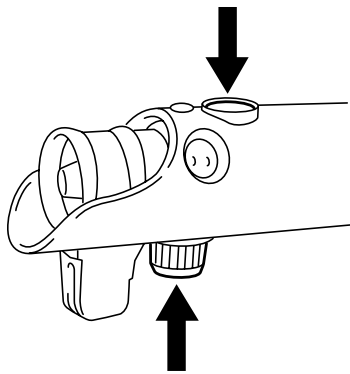
The power does not turn on after new batteries are replaced

The power does not turn on if the battery terminal is not straight. Use a screwdriver to straighten the power terminal, etc.



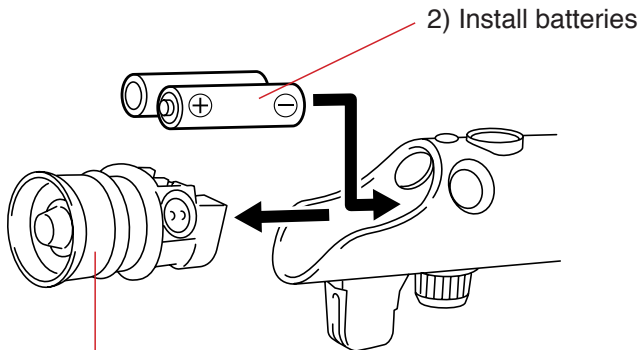
Lightsaber

1



Press the LED indicator stopper button (2 places) simultaneously.

2



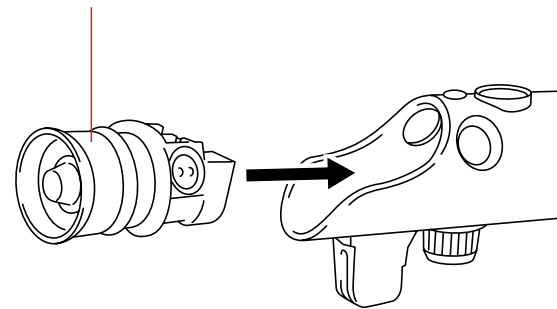
1) Pull out LED indicator

2) Install batteries

Note: Be careful of the battery polarity when installing the batteries.

3

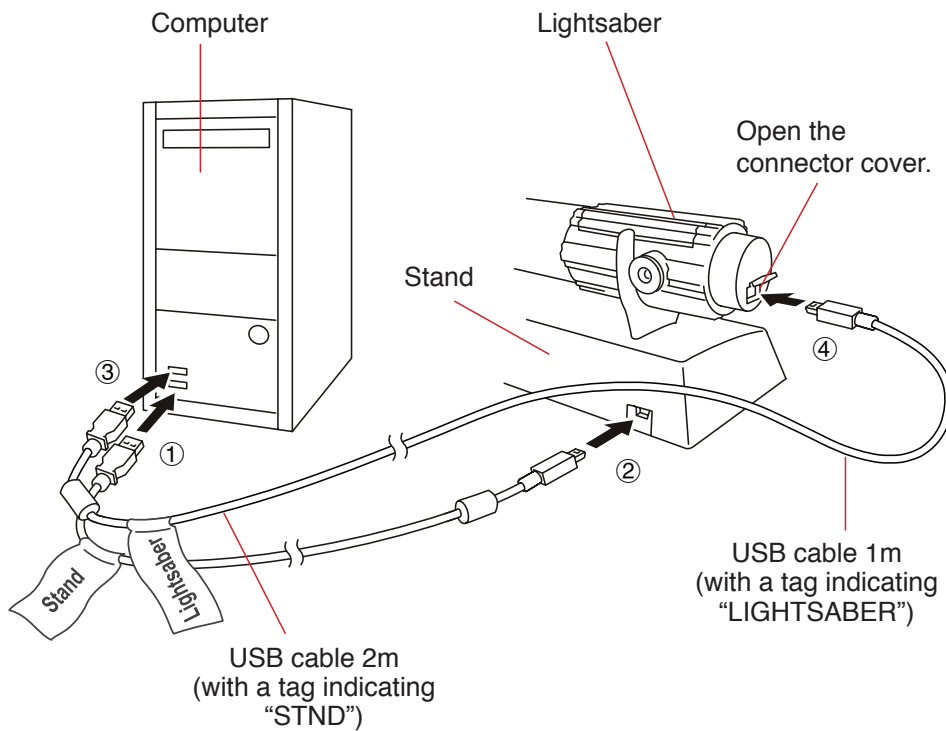
Insert the LED indicator until it clicks.



Note: Make sure that the LED indicator is installed straight.

USB Cable Connection

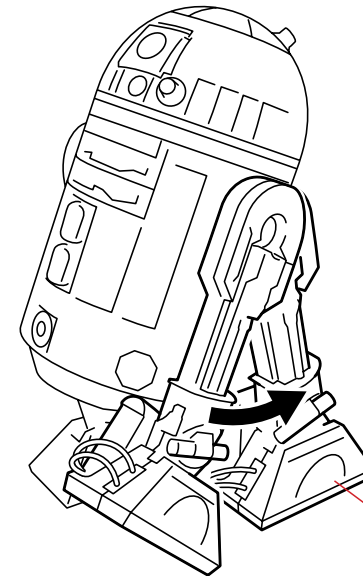
Connect computer, stand and lightsaber with USB cable.



Note: Be careful of polarity of USB connector. Avoid force insertion.

Stand R2-D2

Stand R2-D2 by moving its both arms.

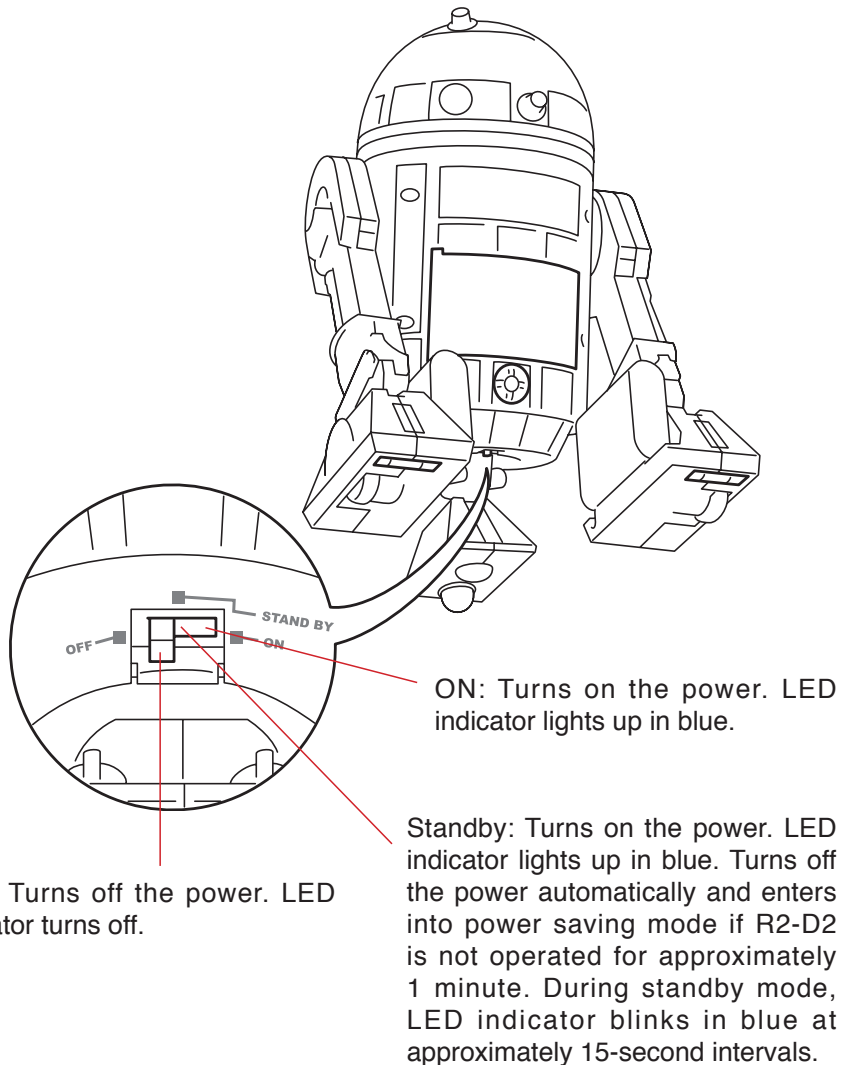


Move the arms towards the rear side until a clicking sound is heard.

Note: To avoid damage, do not force to move the arms beyond their movable range.

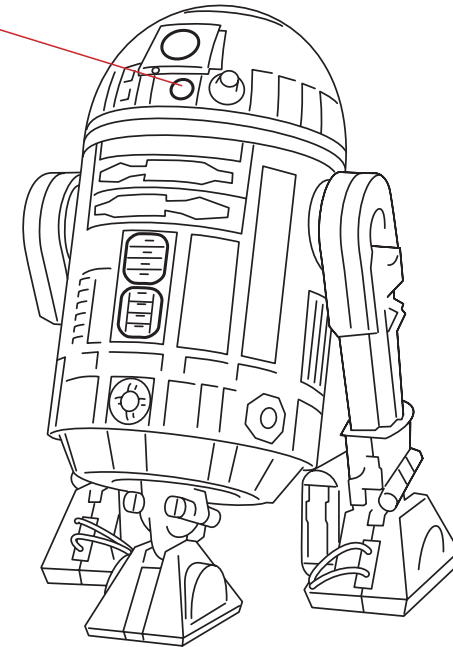
Turn on R2-D2 Power

Set the power switch on the bottom to the ON position. LED indicator on the head lights up when the power turns on.



- ※ If unusual operation or symptom is observed due to static electricity, open and close the battery cover and then turn on R2-D2 power again.

LED indicator



Memo

When the battery level becomes low, the LED indicator turns to red. Please replace the batteries.

Memo


If the camera turns off while the power switch is set to "Standby", press the screen key, or camera reactivation button on the lightsaber. (Refer to "Operate R2-D2" on page 47)

How To Use

Start Software

Software can be started from R2-D2 launcher.

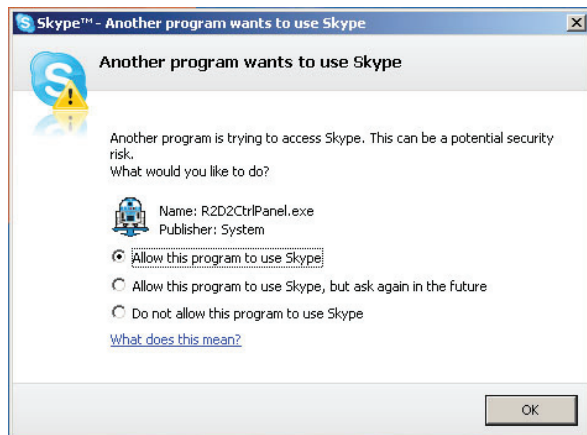
1 Turn on R2-D2 power.
(Refer to “Turn on R2-D2 Power” on page 41)

2 Double-click  on the desktop.
R2-D2 launcher starts.

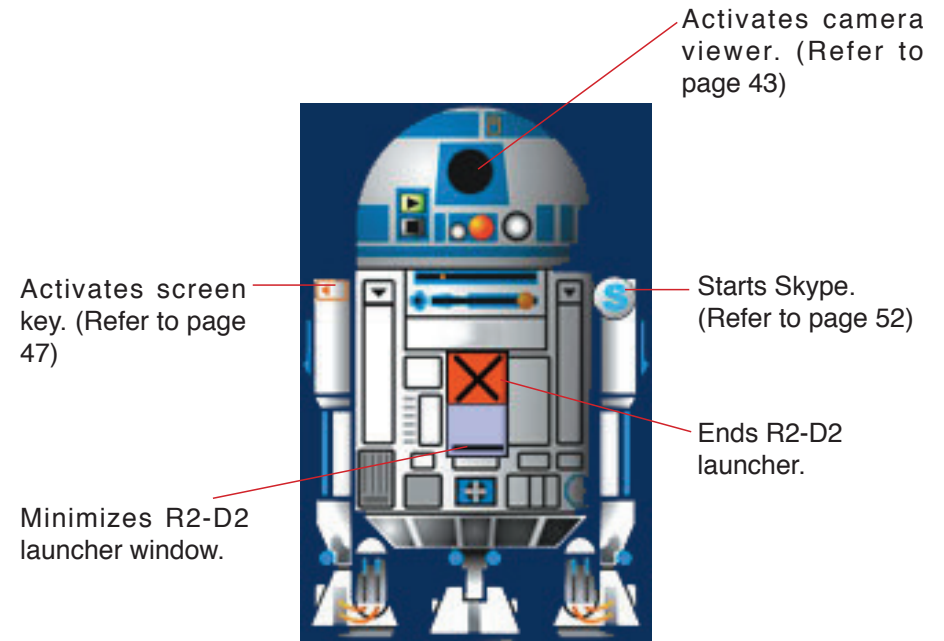
Note: Do not disconnect the USB cable from you computer and connect again during R2-D2 operation. This will caused your computer to auto-restart.

Memo

If the screen shown below is displayed, select [Allow this program to use Skype].



3 Click the desired parts of R2-D2 launcher.



Memo


When put a cursor on the point that can click, the cursor changes to lightsavor's figure .

Operate Camera Viewer

Memo

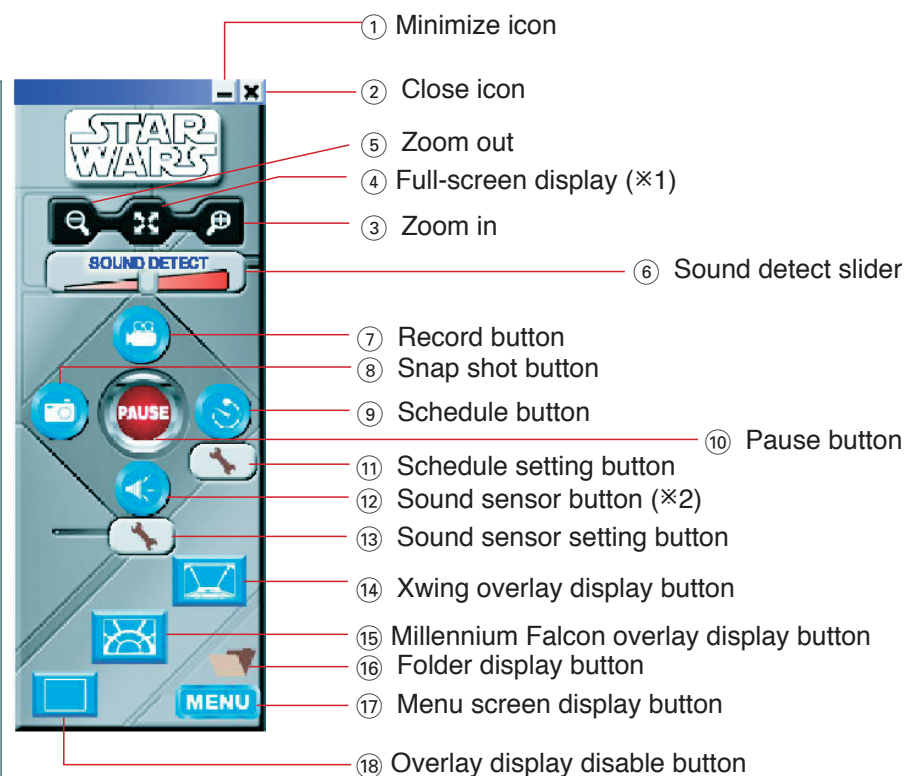
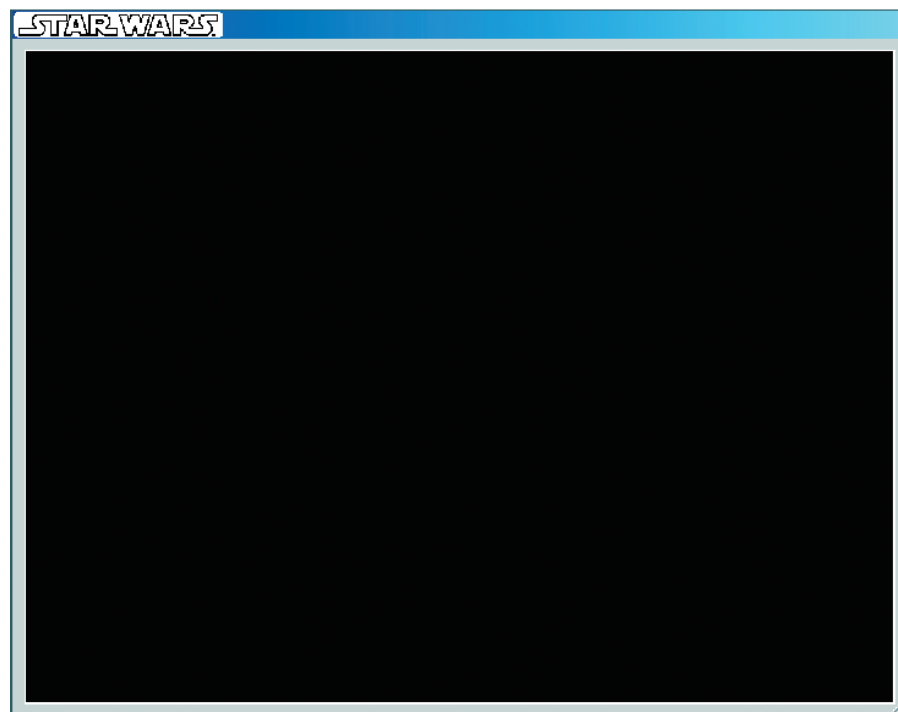
The camera does not mainly focus on capturing image of people.

- 1 Double-click  on the desktop.
R2-D2 launcher starts.

- 2  Click the camera

Camera viewer starts.

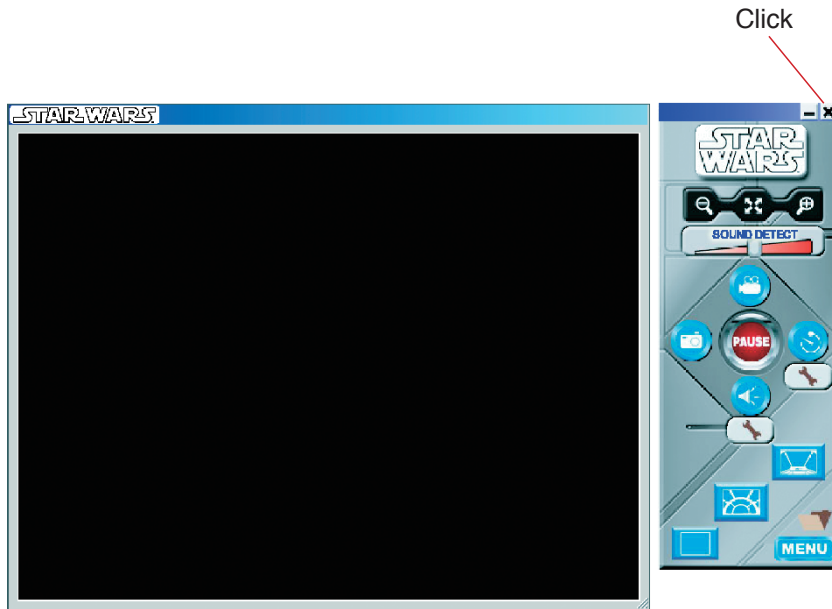
3 Click button to operate.



- ※1 Double-click the screen to return from full-screen display to normal display.
- ※2 Sound sensor (microphone inside R2-D2) is valid only when R2-D2 is stationary. It does not work when R2-D2 is operated (move forward, reverse, turn, camera up-down, etc.) using remote controller.

No.	Name	Function
1.	Minimize icon	Minimizes camera viewer window.
2.	Close icon	Closes camera viewer.
3.	Zoom in	For digital zoom in. Displays close shot.
4.	Full screen display	Displays full-screen camera viewer window.
5.	Zoom out	For digital zoom out. Displays far shot.
6.	Sound detect slider	Adjusts the sensitivity of the sound sensor. Sliding to the left makes the sensor react to a softer sound while sliding to the right makes the sensor react to a louder sound. The sensor reacts to a sound at approximately 50dB when the slider is moved to near the center. × Reaction of the sensor varies depending on the surrounding circumstances and/or battery level. Please note that the sensor does not always works.
7.	Record button	Records the image captured by R2-D2 as a moving picture. Reclicking this button pauses recording.
8.	Snap shot button	Records the image captured by R2-D2 as a still image.
9.	Schedule button	Performs actions designated according to the schedule settings if this button is clicked to activate schedule.
10.	Pause button	Pauses reception from the camera. Display on the screen is paused. Click again to cancel pause.
11.	Schedule setting button	Sets the items to be registered on the schedule and executed automatically. (Refer to “[Plan Task] Screen” on page 65.)
12.	Sound sensor button	Performs monitoring using sound sensor if this button is clicked to activate sound sensor. Able to record or take pictures when sound sensor responds to any sound.
13.	Sound sensor setting button	Sets the action when sound sensor responds to any sound. Alarm setting screen will be displayed. (Refer to “[Alarm] Screen” on page 63.)
14.	Xwing overlay display button	Displays Xwing cockpit picture overlaid on your screen.
15.	Millennium Falcon overlay display button	Displays Millennium Falcon cockpit picture overlaid on your screen.
16.	Folder display button	Display the folder(s) in which recorded data are stored.
17.	Menu screen display button	Displays menu (setting) screen. (Refer to “Camera Viewer Setting” on page 62.)
18.	Overlay display disable button	Disables overlay display and returns to normal screen display.

- 4 Close camera viewer when operation is complete.



- 5 Turn off R2-D2 power.
(Refer to “Turn on R2-D2 Power” on page 41)

Memo

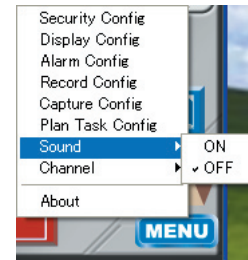
The image might not be clear due to poor signal reception condition. The condition may improve if you change the orientation of R2-D2 or move it to a different location.

Memo

Press the menu screen display button and make the settings for [Sound] and [Channel].

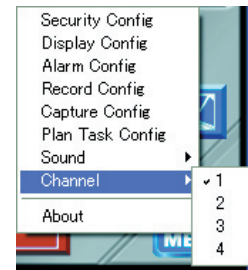
• [Sound]

Use this product while the Sound is set to OFF. If it is set to ON, change it to OFF.



• [Channel]

Select either CH1 or CH4 referring to the package of this product.



Operate R2-D2

You can move R2-D2 freely using computer or lightsaber.

Note: Cautions on moving R2-D2

Fall prevention sensor may not function on table with complicated shape such as round table or table with an uneven edge.

This product is designed to be moved on a flat and level surface. Please be noted that fall prevention sensor cannot always detect difference in surface level.

Memo

You can do the followings when the camera viewer is activated.

- Operate R2-D2 using computer or lightsaber while viewing the image displayed on camera viewer
- Take still or motion pictures while moving R2-D2

Memo

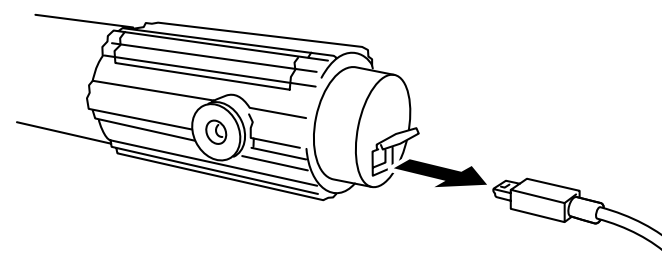
If R2-D2 cannot be started even by double-clicking the R2-D2 launcher, you may use the launcher in the task bar. Double-click the launcher icon on the task bar.

Operate from computer

Operate R2-D2 from computer using screen keys.

1

Disconnect USB cable from the lightsaber.




Memo

You cannot operate R2-D2 from the computer if USB cable is connected to the lightsaber.

2

Turn on R2-D2 power.
(Refer to “Turn on R2-D2 Power” on page 41.)

3

Double-click  on the desktop.
R2-D2 launcher starts.

4

Click the camera

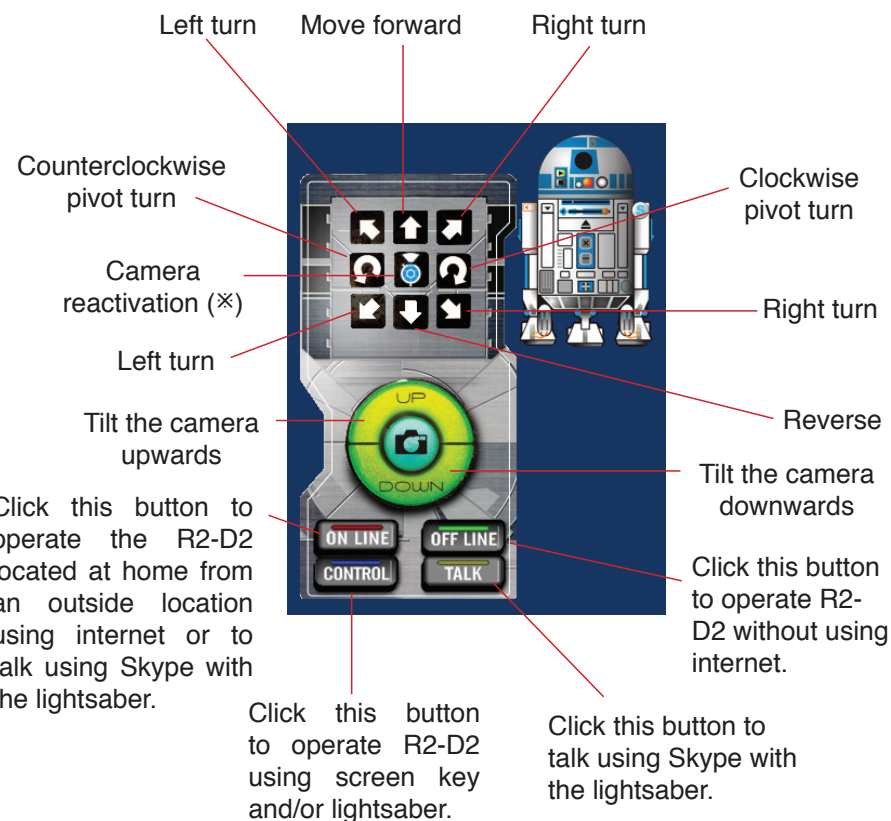
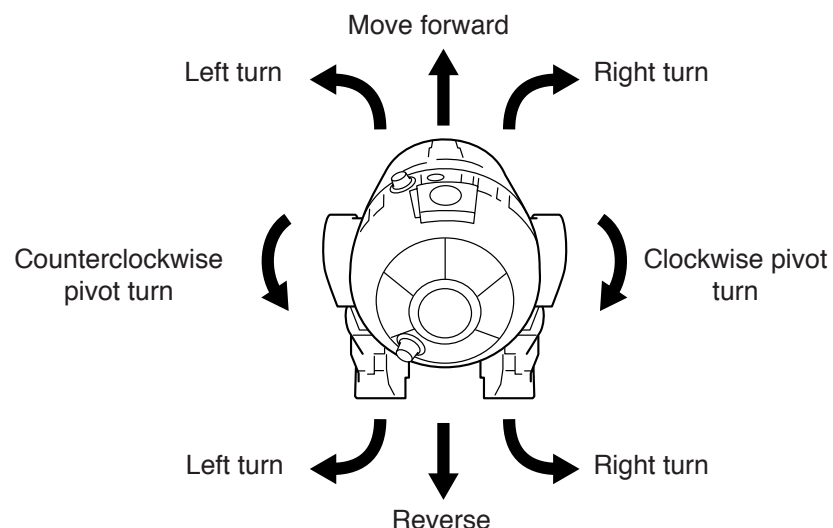
Click this part of R2-D2



Screen key and camera viewer are activated.

5

Click buttons to operate R2-D2.



※ Camera reactivation: When the power switch on R2-D2 is set to the “Standby” position, the camera automatically turns off when 1 minute has elapsed since photography has ended. In this case, pressing this button reactivates camera function. Press this button for approximately 15 seconds until the screen is re-displayed.

6

Click again to complete operation



Screen keys are closed.

7

Close the camera viewer.

8

Turn off R2-D2 power.
(Refer to “Turn on R2-D2 Power” on page 41)

9

Connect USB cable to lightsaber.

Operate with lightsaber

Memo

Make sure that USB cable is properly connected to lightsaber.

- 1 Double-click  on the desktop.
R2-D2 launcher starts.

- 2 Turn on R2-D2 power.
(Refer to “Turn on R2-D2 Power” on page 41.)

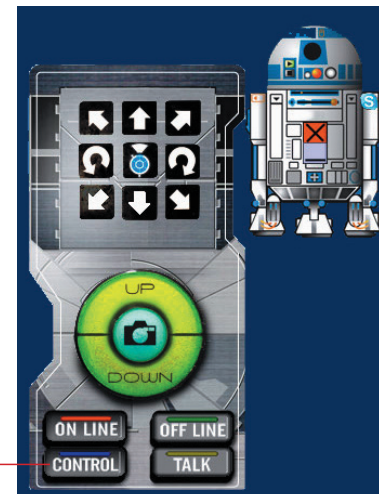
- 3 Click the camera.

Click this part
of R2-D2



Screen key and camera viewer are activated.

4



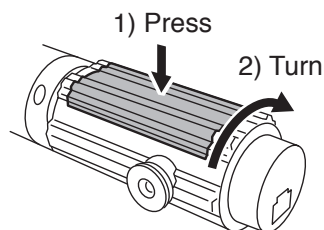
Memo

When [TALK] is pressed, lightsaber functions as an IP phone and R2-D2 cannot thus be operated with lightsaber.

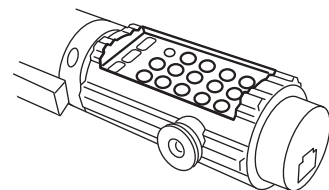
Memo

If [OFFLINE] is selected, the mode is set to [CONTROL] automatically.

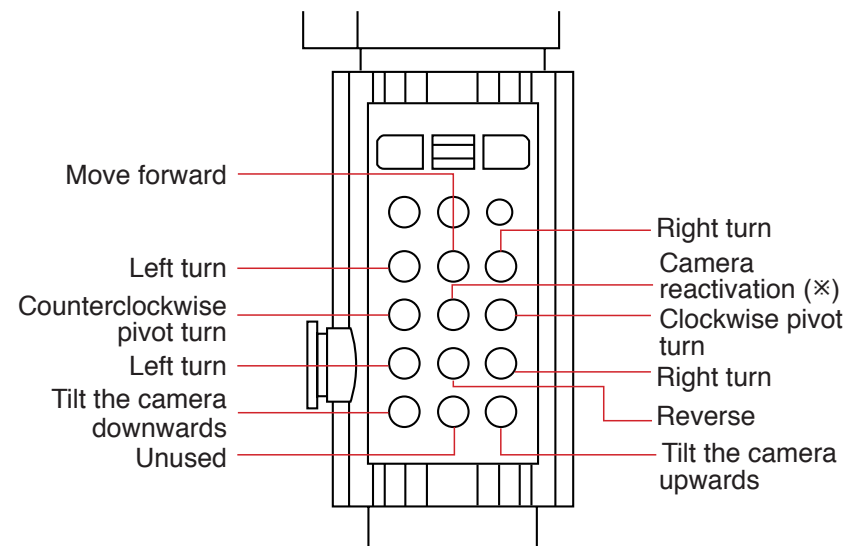
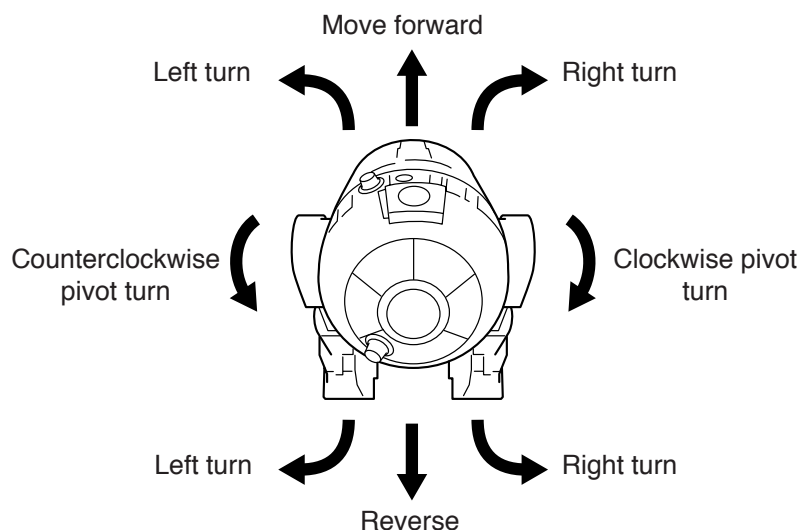
5 Open the cover of lightsaber.




1) While pressing the button on the grip, 2) turn the grip clockwise to open the cover. The grip turns only in a single direction. Please note that the grip may get damaged if you attempt to turn the grip in the reverse direction. Just as opening the cover, turn the grip clockwise to close the cover. When closing the cover, stop turning the grip when you hear a click sound and the button on the grip pops up.



6 Press buttons to operate R2-D2.



※ Skype starts when R2-D2 is operated with the lightsaber. Make sure to press the [Off button] on the lightsaber or click the Off button  on the Skype screen when ending R2-D2 operation.

※ Camera reactivation: When the power switch on R2-D2 is set to the “Standby” position, the camera automatically turns off when 1 minute has elapsed since photography has ended. In this case, pressing this button reactivates camera function. Press this button for approximately 15 seconds until the screen is re-displayed.

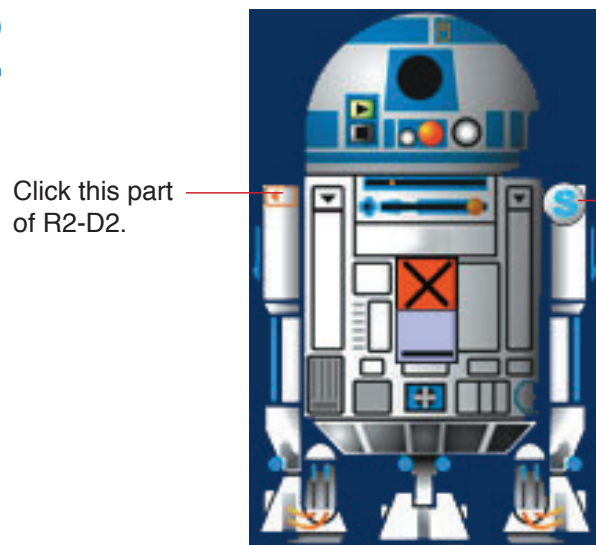
7 Close the screen key and camera viewer.

8 Turn off the power of R2-D2 when the operation is complete. (Refer to “Turn on R2-D2 Power” on page 41)

Talk on Skype

- 1 Double-click  on the desktop.
R2-D2 controller is activated.

2

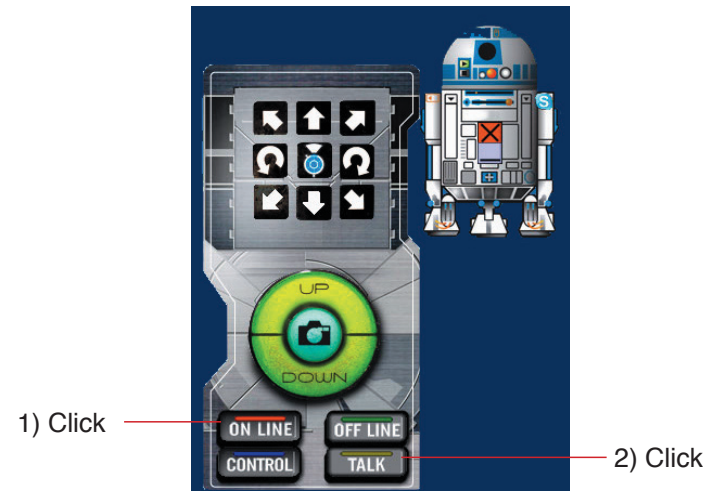


Click this part
of R2-D2.

Click the Skype
button on R2-D2.

Skype starts and screen key is activated.

3



1) Click

2) Click

Memo

When [CONTROL] is pressed, lightsaber functions as an R2-D2 controller and it cannot thus be used as an USB phone.