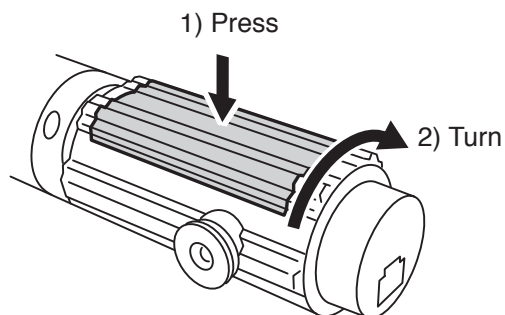



4 Open the cover.

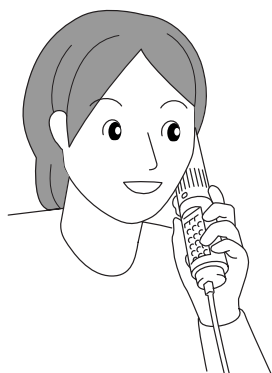


(Refer to “Open the cover of the lightsaber” on page 51.)

5 Press the button and talk, paying attention to microphone and speaker location.

Make sure that your phone is online on contact screen. Select Skype Sound Test.

Click [ONLINE] button and [TALK] button on screen key. Then press the talk button  on Skype screen to talk.



Memo

For function of each button, refer to “Button List” on page 10.

Memo

When using R2-D2 as a web camera, turn off R2-D2 power after use. (Refer to “Turn on R2-D2 Power” on page 41.)

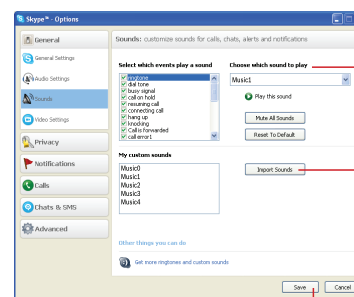
Memo

For detailed operation method of Skype, refer to Skype homepage (<http://www.skype.com>).

Memo

If you install the software provided with this product, you can change the ring tone to Star Wars sound. To change your ring tone, follow the procedures outlined below.

1. Start Skype and click [Tools] – [Options] – [Sounds].
- 2.



1) Select “Playback when a call is received”.

2) Click your desired sound to select it.

3) Click “Save”.

- ※ Or click [Return to Default Setting].
- ※ Music 0 ~ 6 are Star Wars sound.

## Operate R2-D2 in The House from Outside Location [Skype Mode]

You can move R2-D2 in your house by Skype talk between the computer in your house and another computer outside the house.

### Memo

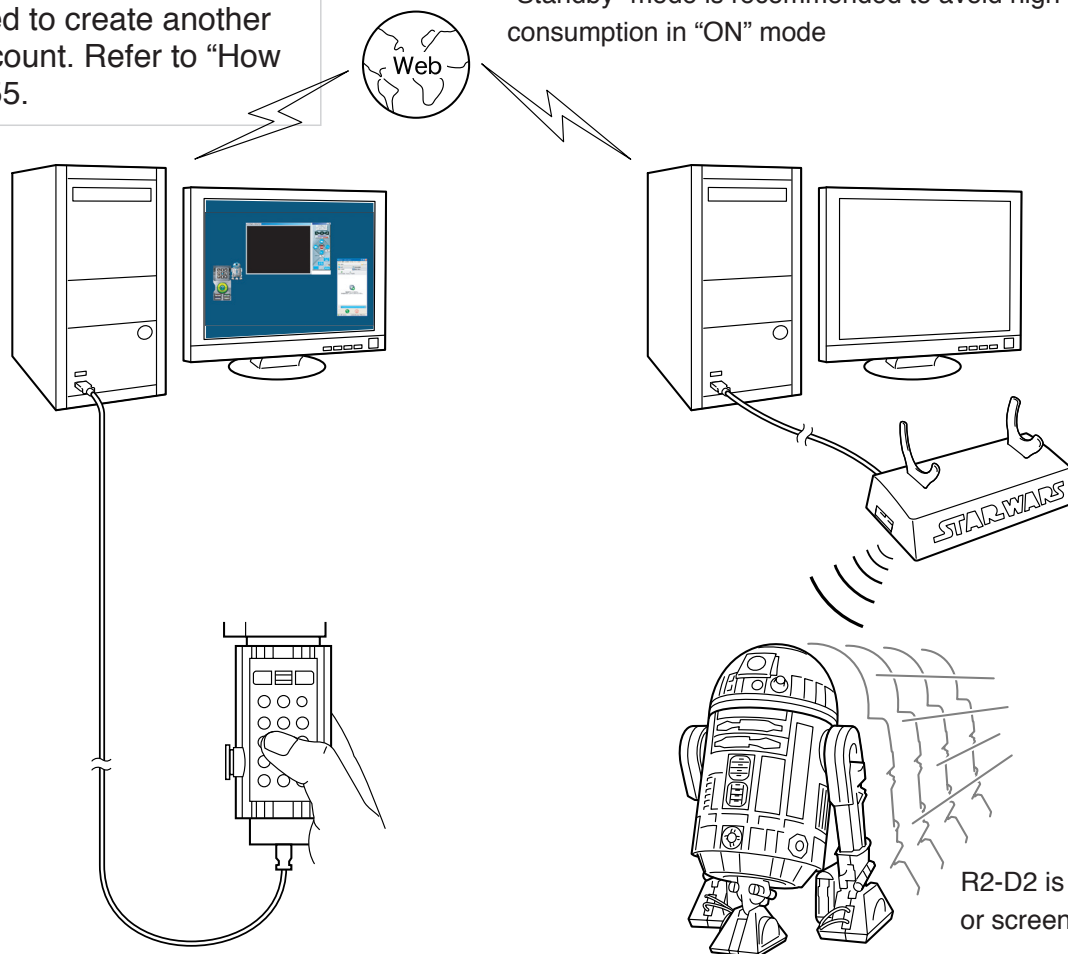
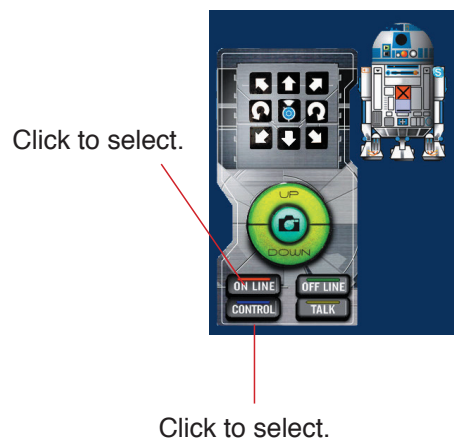
To use R2-D2 in Skype mode, you need to create another Skype account besides the current account. Refer to "How To Create A Skype Account" on page 55.

< At home >

- Disable the power saving function of the computer
- Start Skype
- Change Skype settings. (Refer to the next page)
- Set the power switch on R2-D2 to "ON" or "Standby"
- ※ "Standby" mode is recommended to avoid high power consumption in "ON" mode

< Outside the house >

- Start Skype and connect to the computer in the house
- Operate R2-D2 with lightsaber or screen keys



R2-D2 is moved by lightsaber or screen key operation

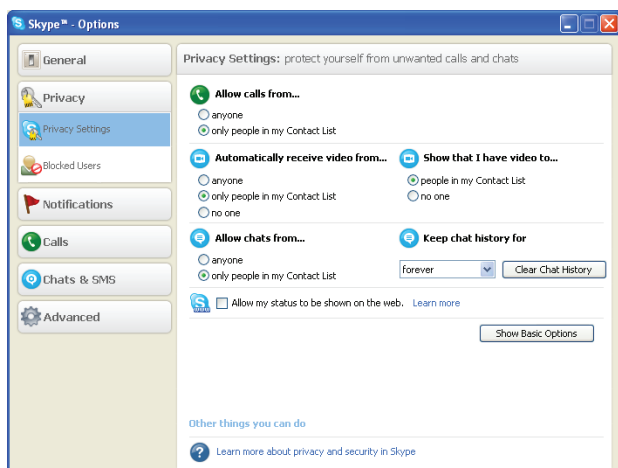
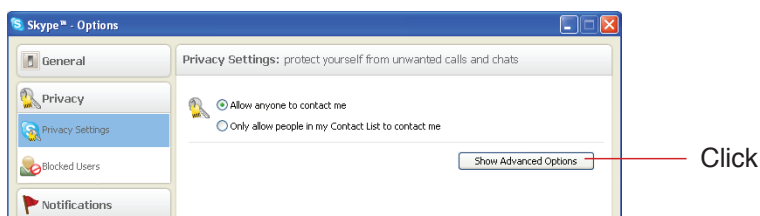
## How To Create A Skype Account

To operate R2-D2 located at home from an outside location, you need to create another Skype account exclusively for operation of R2-D2. R2-D2 cannot be operated by using the Skype account registered for Skype calls.

**Note:** To protect your privacy, please create 2 separate accounts for R2-D2 operation and Skype calls.

When “Auto-answer calls” is set for Skype calls, any Skype user can view your room if you select “Anyone” for “Allow calls from”. Read the description stated below to make appropriate settings.

■ Click [Tools] – [Options] – [Privacy] – [Privacy options]. Click “Show details”.



### Memo

Setup screen may vary depending on Skype version. If different screen from the above picture is displayed, refer to Skype Help.

- Allow calls/chats from:
  - anyone    Allows calls from anyone.
  - only people from my Contacts              Only allows calls/chats from people on your contact list.
  - only people I have shared my details with      Only allows calls/chats from people you have shared your details with.

The difference between “people on my Contacts” and “people I have shared my details with” is whether or not to share your details. If you register a person on your contact list but do not share your details with the person, the person is categorized as “people on my Contacts”.

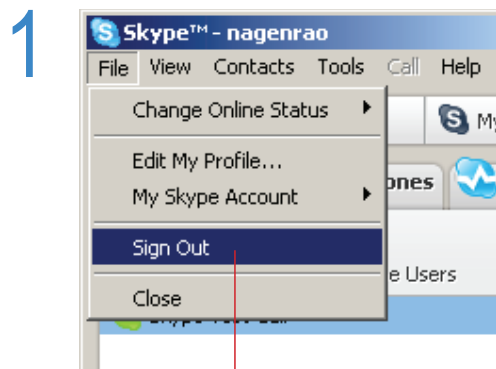
“People I have shared my details with” is a person you registered on your contact list and allowed to share your details with.

This means that a person carrying a Skype name with whom you share your details is “people I have shared my details with” while a person who was just registered on your contact list is “people on my Contacts”.

If you created an account exclusively for R2-D2 and registered only your account on your contact list, nobody else will be able to view your room.

For Skype calls, many people have already been registered on your contact list. You may set the privacy protection level for operation of R2-D2 by creating a separate Skype account.

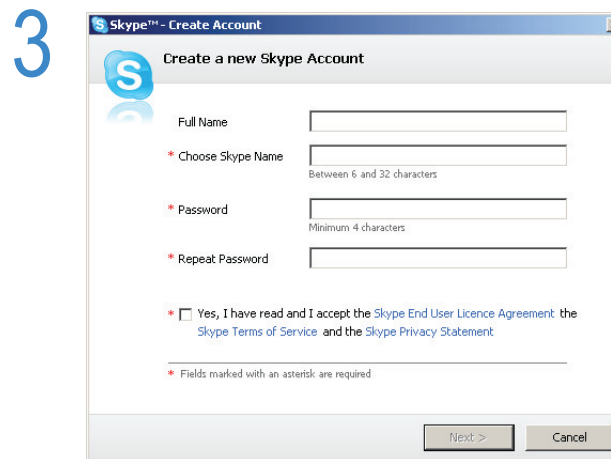
## How To Create A Skype Account



Log out of Skype.



Click



Following the instructions on the screen, set up your Skype name (account ID) and password exclusively for R2-D2.

4 Subsequently, perform the same procedures as when you created your Skype ID for the first time.

## Changing the Skype Account

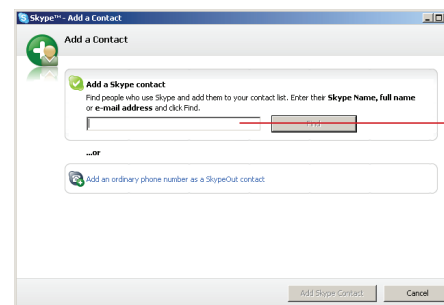
1 Log out of Skype.



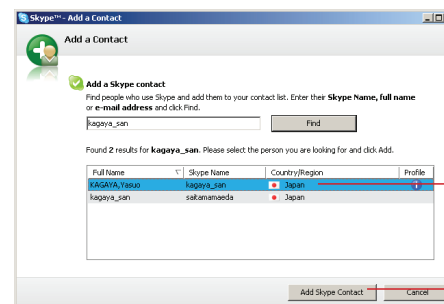
Select a Skype name.

## Add Contact to Your Contact List

- From outside  
Add the account to be used in your house to your contact list by [Tools] – [Add contact].



Enter the account of your computer to be used outside of the house in the search box and perform a search.



Find and select the search result you wish to add.

Click "Add Skype Contact".

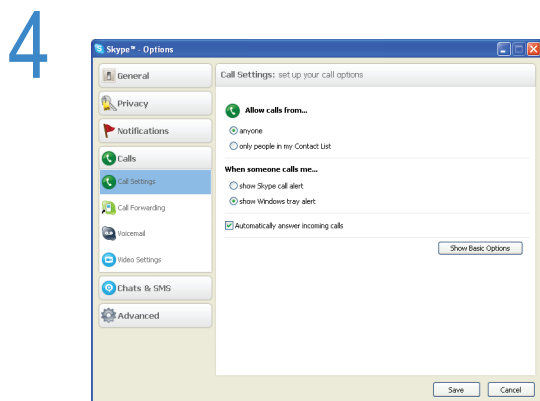
- At home  
Add the account of your computer to be used outside of the house to your contact list.

Add a contact following the same procedures as adding a contact from outside of the house.

## Skype settings on the computer at home

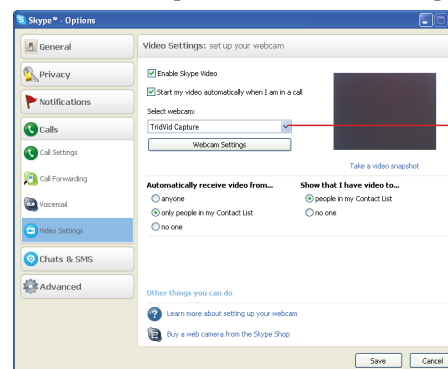
Please make the following settings.

- 1 Turn on R2-D2 power.  
(Refer to “Turn on R2-D2 Power” on page 29.)
- 2 Click [Tools] – [Options] – [Video].
- 3 Click [General] – [Video settings]. Check [Enable Skype Video] and check [Start my video automatically] in the “When I am in a call section”. Select [TridVid Capture] in the [Select Webcam] section.



**Note:** Remove the checkmark from [Start my video automatically] if not in Skype mode.

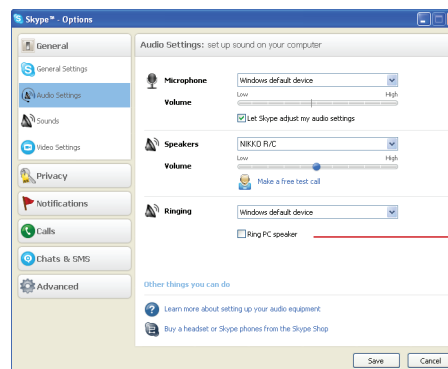
- 5 Click [Detail].
- 6 Select [Calls] – [Incoming Calls]. Click “Show details” and then check [Auto-answer calls].



Click and check.

**Note:** Remove the checkmark from [Auto-answer calls] if not in Skype mode.

- 7 Click [Tools] – [Options] – [General] – [Audio settings]. Confirm that “NIKKO R/C” is selected for the speaker. If another device is selected, select “NIKKO R/C”.

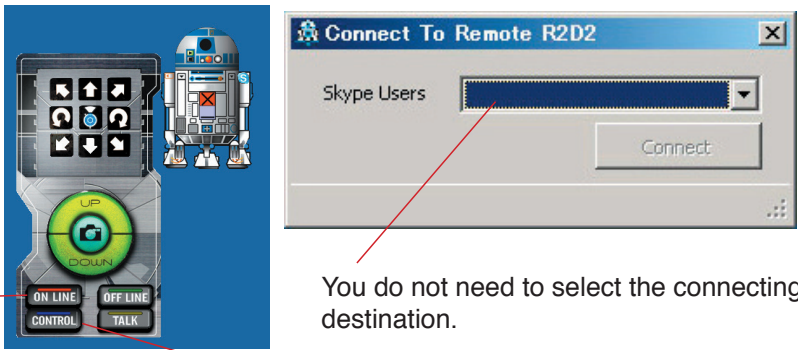


Click and check.

8 Click the [Save] button.

9 Start R2-D2 launcher to activate the screen key.

10



Click to select. Click to select.

You do not need to select the connecting destination.

Wait without performing anything.

**Note:** R2-D2 cannot be operated from outside if Skype and R2-D2 launcher are not active.

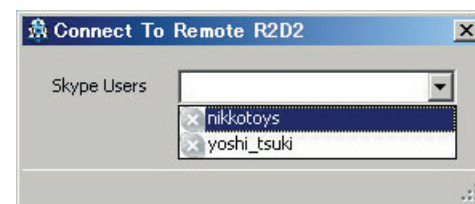
**Note:** Set the power option of your computer (power option on the control panel) to “Always On” and set the “System standby” and “System hibernates” to “Never”.

### Skype settings on the computer used outside

**Note:** Do not activate the camera viewer.

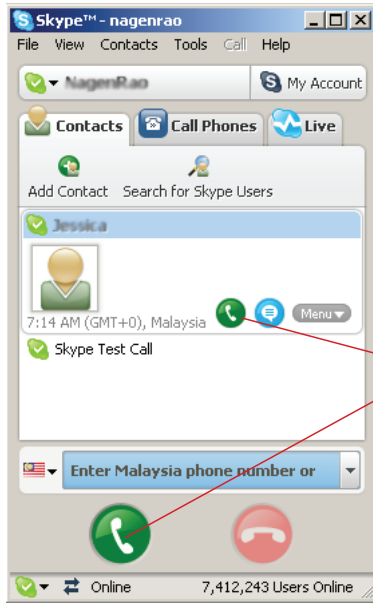
#### Memo

To connect to R2-D2 located at home from an outside location, click the [ONLINE] and [CONTROL] buttons using the screen key on your computer used outside. The popup window allowing you to select the connecting destination will be displayed. Select the account to be used in your house.



- 1 To operate R2-D2 with the lightsaber, connect the lightsaber to the computer.
- 2 Start Skype.
- 3 Start R2-D2 launcher.

4 Call the computer located in your house through Skype.

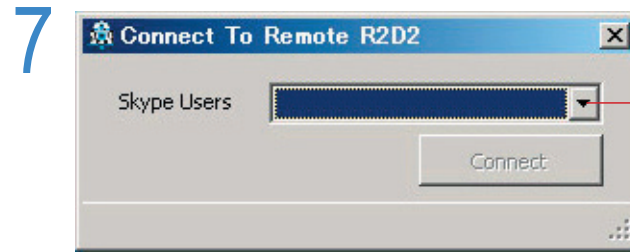


Click either one.

You will receive images from the computer located in your house after a few seconds.

5 Activate the screen key.

6 Click the [ONLINE] and [CONTROL] buttons..



When operating R2-D2 using screen key, select the connecting destination.

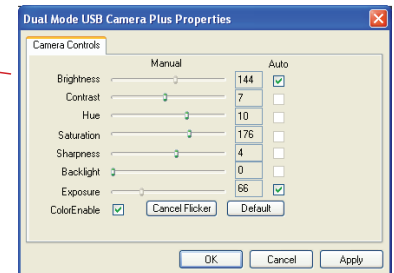
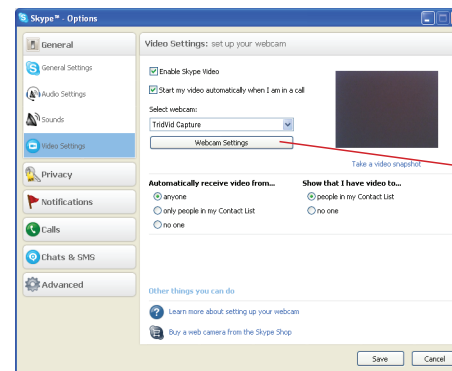
**Memo**

This operation is not necessary if you operate R2-D2 with the lightsaber.

8 Operate R2-D2 with the lightsaber or screen key..

**Memo**

Skype video quality can be adjusted. Click [Tools] – [Options] – [General] – [Video settings]. Click [Select Webcam] in the video settings section to display the properties of TridVid Capture. Settings of items such as brightness, contrast and hue can be made with the adjustment tags. If you check the box on the right side of each item, appropriate value is set automatically.

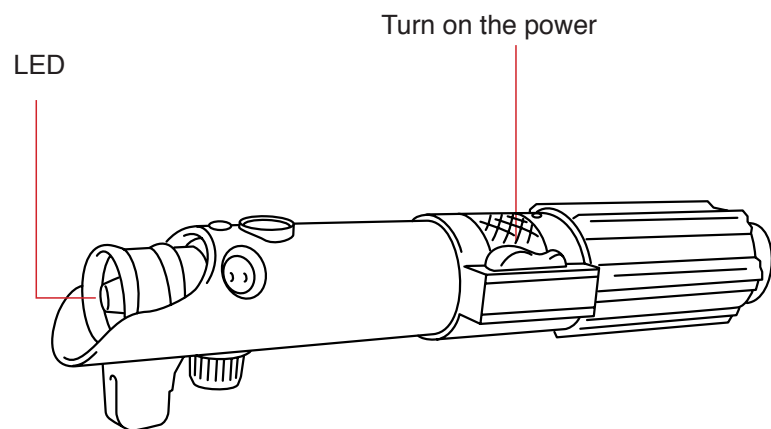




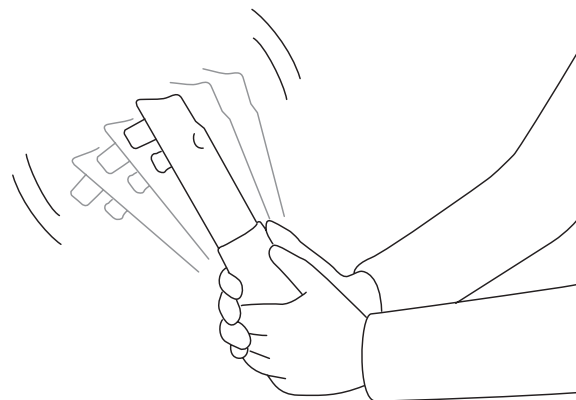
## Sound Action of Lightsaber

When the lightsaber power is turned on, the LED indicator lights up in blue and you can enjoy the lightsaber sounds same as the one heard in the movie.

**Note:** Before you swing the lightsaber, make sure that the LED indicator is fixed to the lightsaber firmly by referring to page 39. If the LED indicator is not fixed firmly, the batteries inside may come off and cause personal injury.



## Swing the lightsaber



- Sound 1: When you turn on the lightsaber power, you hear humming sound for blade opening.
- Sound 2: You hear idling sound if you do not move lightsaber.
- Sound 3: You hear battle-clash sound if you swing lightsaber.

**Note:** Grip lightsaber firmly to swing. Make sure the area around you is clear.

### Memo

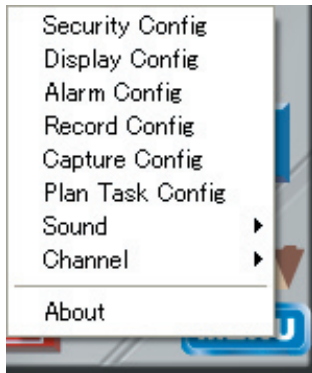
Turn off the power of lightsaber when finished using it.

# Camera Viewer Settings

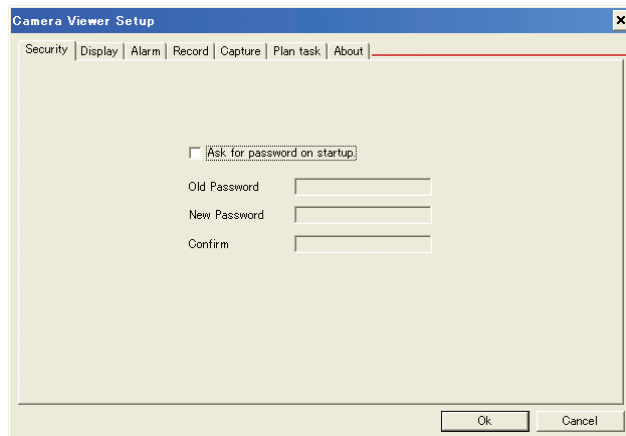
Click [MENU] button displays the list of setting menus.  
Configure settings by selecting desired menu.  
Setting screen may be changed by clicking a tab.

## Memo

Make sure to set the "Channel" (refer to page 65.)



Click



Click

## • [Security] screen

Configures setting to ask for password on startup.

Item	Description
Ask for password on startup	Configures whether or not to enter password on startup.
Old Password	Input old password to change password.
New Password	Input new password. Input a password in this column to set your password for the first time.
Confirm	Input the password again to confirm your new password.

## Memo

If you forgot the old password, uninstall (refer to "Camera Viewer" on page 67) and then reinstall the software.

• **[Display] screen**

Configures settings on camera images.

Item	Description
Camera Alias	Sets the camera channel (CH1 or CH4) printed on the package.
On Screen Display	Displays date, time and channel number on the screen.
Video Adjustment	Standard: Selects video standard (PAL/NTSC). ※This selection is not required for this product. Maintain the default setting (NTSC) to use this product. Brightness: Adjusts brightness of screen. Sharpness: Adjusts sharpness of screen. Contrast: Adjusts screen contrast. Saturation: Adjust the saturation of screen. Default: Clicking “Default” returns all settings under Video Adjustment except for Standard to default settings.

• **[Alarm] screen**

Records motion pictures or take still pictures in response to movement or sound captured by the camera.

Item	Description
Alarm setup	Select and check the channel which you want to monitor. Open sound alarm: Provides alarm when any sound is detected.
Alarm operation	Configures alarm settings. Record: Records motion pictures. Capture: Takes still pictures. Play alarm sound: Plays alarm sound.
Record strategy of alarm	Sets recording time in case of alarm. Settable when “Record” is selected for “Alarm operation”.
Capture strategy of alarm	Sets the time until commencement of recording in case of alarm. Also sets the number of images captured by camera in 1 second. Settable when “Capture” is selected for “Alarm operation”.

**Memo**

Set the power switch on R2-D2 to “ON” position. If it is set to “Standby”, the above functions cannot be performed.

• **[Record] screen**

Configures settings on recording motion pictures.

Item	Description
Record File Path	Selects the location to store recording motion pictures by clicking [Change] button.
Record File Setup	Sets file format of recording motion pictures. Compression: Selects compressing method for motion pictures. File Format: Selects file format of motion pictures. Image Size: Selects the size of motion pictures. Frame rate: Selects frame rate (i.e., number of images per second)
Storage Strategy	Sets the total file size limit for motion pictures storage as well as the size limit per file.
Take following operation when total file size limit is reached	Sets the operation when the total file size limit for moving picture storage is reached. Delete oldest files: Deletes old files. Stop capturing and notify user: Stop recording and displays a message.

• **[Capture] screen**

Configures settings on capturing still pictures.

Item	Description
Picture Path [Change]	Selects the location to store captured still pictures by clicking this button.
Picture Format	Sets file format of captured still pictures. Compression: Selects compressing method for still pictures. Image Size: Selects the size of still pictures.
Storage Strategy	Sets the total file size limit for still pictures storage as well as the size limit per file.
Take following operation when total file size limit is reached	Sets the operation when the total file size limit for still picture storage is reached. Delete oldest files: Deletes old files. Stop capturing and notify user: Stop capturing pictures and displays a message.

• **[Plan task] screen**

Configures setting to take still or motion picture automatically at a preset date and time.  
Set the following items by clicking [New] button and register by pressing [Add] button.

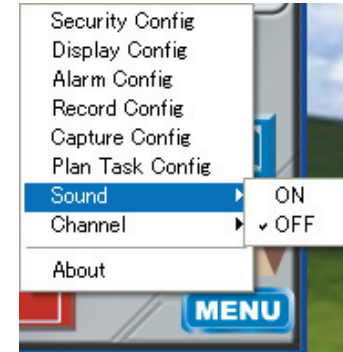
Item	Description
Task Strategy	Selects alarm cycle (Daily, Weekly, Monthly or Only Once).
Timing	Sets the date and time for recording or capturing pictures.
Operation	Sets recording or capturing intervals.
Channel	Selects channel.

**Memo**

For channel, select either CH1 or CH4 referring to the package of this product. If the channel and setting are not matched, recording is not performed.

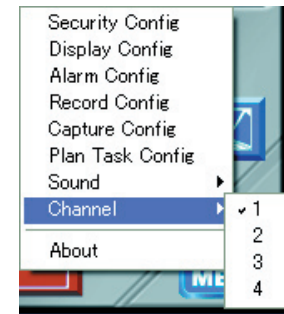
• **[Channel]**

Use this product while the Sound is set to OFF. If it is set to ON, change it to OFF.



• **[Channel]**

Referring to the package of this product, select either CH1 or CH4.



• **[About] screen**

Displays version of camera viewer.

# Uninstall Software

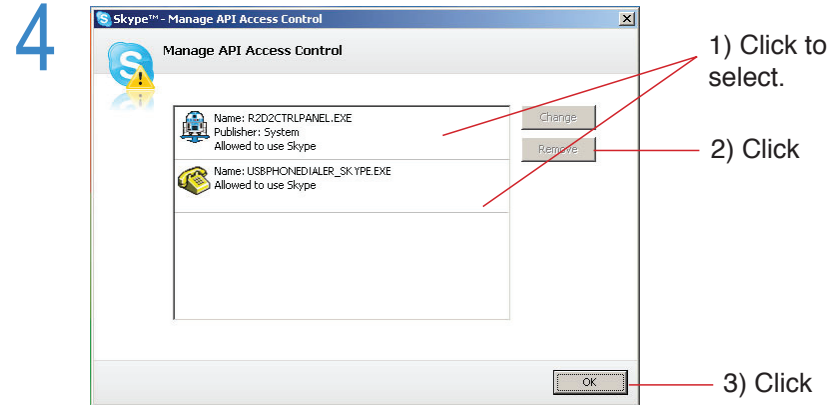
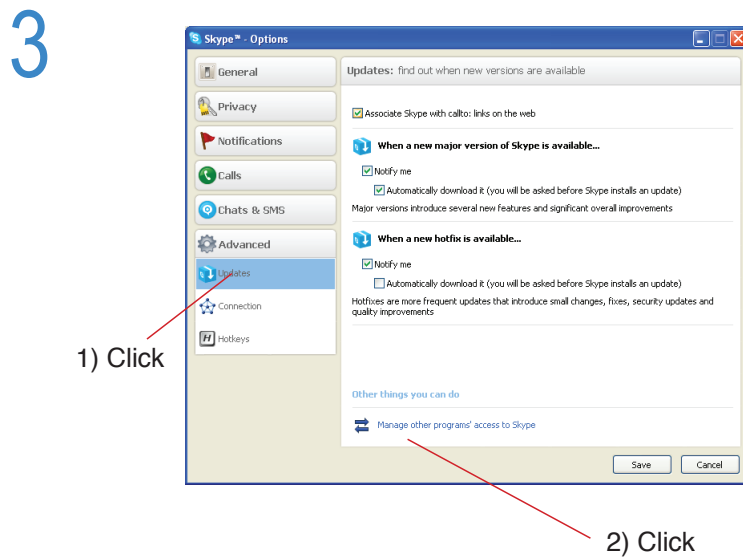
This section describes how to remove unnecessary software and/or Skype.

## SkypeAPI

Cancel the link between Skype and other applications (dialer, R2-D2 launcher and screen key).

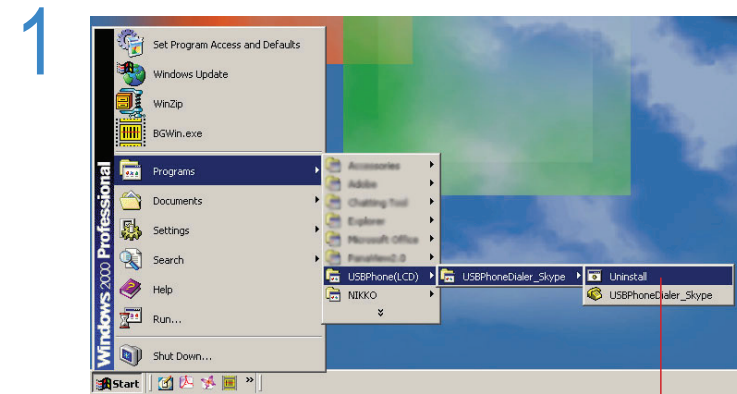
1 Start Skype.

2 Click [Tools] – [Options] – [Advanced] – [Update].



Remove both of the above.

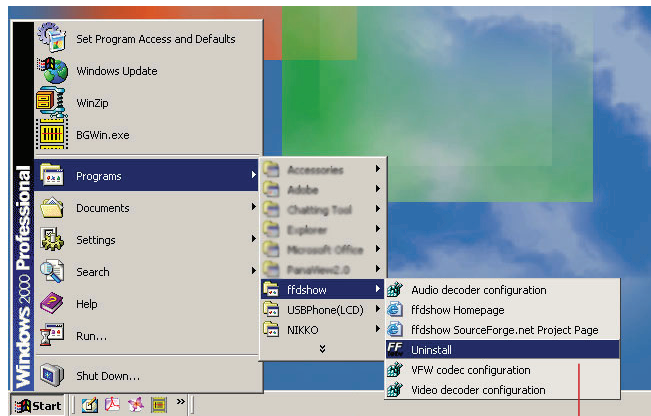
## Dialer



Click [Start] – [All Programs] (or [Programs]) – [USBPhone (LCD)] – [USBPhone Dialer\_Skype] – [Uninstall].  
Subsequently, operate following the instructions on the screen.

## ffdshow

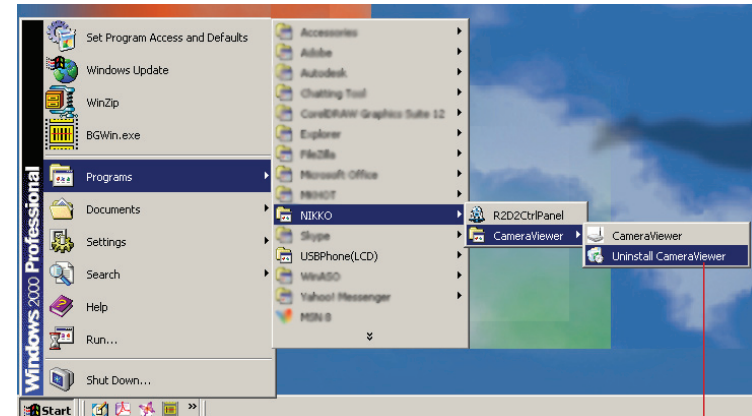
1



Click [Start] – [All Programs] (or [Programs]) – [ffdshow] – [Uninstall].  
Subsequently, operate following the instructions on the screen.

## Camera viewer

1



Click [Start] – [All Programs] (or [Programs]) – [NIKKO] – [Camera-Viewer] – [Uninstall CameraViewer].  
Subsequently, operate following the instructions on the screen.

## R2D2 Launcher

1 Click [Start] – [Control Panel] (or [Settings] – [Control Panel]).

2 Double-click [Add or Remove Programs].

3

1) Click

2) Click

Program Name	Size	Used	Last Used On
R2D2 Launcher	1.77MB	occasionally	4/24/2007
Real Alternative 1.35	13.6MB		
Security Update for Windows 2000 (KB911706)	16.2MB		
Security Update for Windows Media Player (KB911964)	16.2MB		
Security Update for Windows Media Player 9 (KB911965)	16.2MB		
Security Update for Windows Media Player 9.0 (KB917734)	16.2MB		
Skype 2.0	19.2MB		
Sonic Focus	1.59MB		
SoundMAX	16.1MB		
Symantec Antivirus	90.7MB		
T3System	2.33MB		

Subsequently, delete the program “R2-D2 Launcher” following the instructions on the screen.

## Skype

### Memo

If you continue to use Skype, do not uninstall.

1 Click [Start] – [Control Panel] (or [Settings] – [Control Panel]).

2 Double-click [Add or Remove Programs].

3

1) Click  
 ※ Skype version varies depending on installation conditions.



2) Click

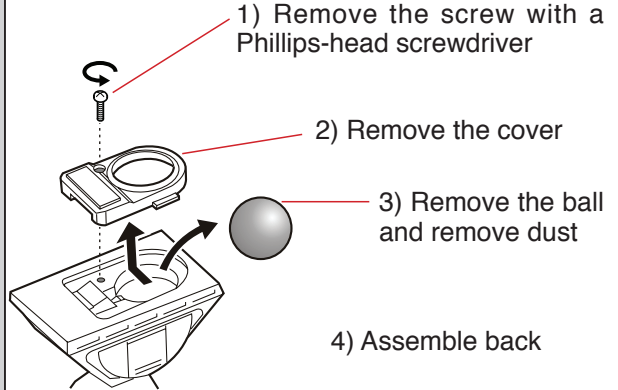
Program Name	Size	Used	Last Used On
Skype 2.0	19.2MB	frequently	4/24/2007
Sonic Focus	1.59MB		
SoundMAX	16.1MB		
Symantec Antivirus	90.7MB		
T3System	2.33MB		

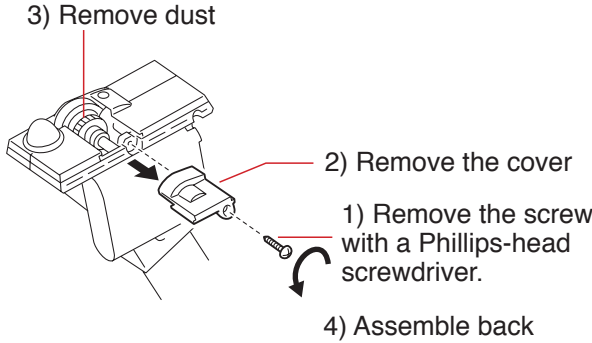
Subsequently, operate following the instructions on the screen.



# Troubleshooting

Trouble	Check the followings
[ONLINE] and [OFFLINE] on screen key cannot be switched.	Is Skype online? (Set to  )
Lightsaber does not function as a Skype phone button.	Is Skype online? (Set to  )
R2-D2 does not move.	Is the battery polarity correct? Install batteries in the correct polarity.
	Is the power switch on R2-D2 set to "OFF" position? Set the power switch to "ON" or "Standby".
	Is USB cable connected correctly? Check the USB cable connection referring to "USB Cable Connection" (on page 40).
	Did you attempt to operate R2-D2 from screen key while lightsaber is connected to the stand? Disconnect USB cable from lightsaber when using screen key.
	Is the LED indicator of R2-D2 red? If yes, the batteries have run out. Please replace with new batteries. (LED indicator in blue means battery is in full power status.
	Did you attempt to operate R2-D2 with lightsaber while lightsaber is not connected to the stand? Connect lightsaber to the stand with USB cable to operate R2-D2 with lightsaber.

	Make sure that the "Red Light" is ON on the "Lightsaber Skype Phone" and the "Blue Light" of the STAR WARS™ Logo is ON on the "Stand"
	Did you press [ONLINE] or [TALK] on screen key? Please press [CONTROL] key. Delay in operation may occur when using Skype (when remote controlling R2-D2).
R2-D2 does not move according to remote control operation.	Did dust go in the fall prevention sensor? If the ball movement of the sensor is not sharp, remove the ball and remove dust.  

	<p>If the tire does not roll smoothly, remove the cover and clean the dust accumulated around the axle.</p> <p>3) Remove dust</p>  <p>2) Remove the cover</p> <p>1) Remove the screw with a Phillips-head screwdriver.</p> <p>4) Assemble back</p>
<p>No picture is displayed on camera viewer.</p>	<p>Has device controller been installed in camera viewer? Check the installation.</p> <p>Is the stand connected to computer with USB cable? Connect computer and stand with USB cable.</p> <p>Has the power of R2-D2 been turned on? Set the power switch on R2-D2 to “ON” or “Standby” position. (When the power switch is set to “Standby”, R2-D2 is in power-saving mode. Continuously press the No.5 key on the lightsaber for 10 seconds.)</p> <p>Is the LED indicator of R2-D2 red? If yes, the batteries have run out. Please replace with new batteries. (LED indicator in blue means battery is in full power status.)</p>

	<p>Is the channel of camera viewer correct? For camera viewer channel, either CH1 or CH4 is specified on the package. Make the correct setting on the “Channel” screen of the menu setting.</p> <p>Is the video standard selected correct? Try to change video setting (NTSC/PAL) on “Display” screen of menu setting.</p> <p>Is the distance between R2-D2 and the stand too far? Use R2-D2 within control distance from the stand without any obstruction.</p> <p>Reception condition may not be good in some area. The condition may improve if you move to a different location.</p> <p>When R2-D2 is in power-saving mode (i.e., the power switch is set to “Standby”), camera may not be reactivated even if No.5 key on the lightsaber is pressed for more than 10 seconds. Reactivation may need some time depending on product condition. Try to press the No.5 key for about 20 seconds.</p>
--	--

Troubles about Skype	Is [Start my video automatically] checked? Click [Tools] – [Options] – [Video] and check [Start my video automatically].
	Is correct webcam selected on Skype? Click [Tools] – [Options] – [Video] – [Select Webcam] and check the setting.
	Is the channel of camera viewer correct? For camera viewer channel, either CH1 or CH4 is specified on the package. Make the correct setting on the “Channel” screen of the menu setting.
	Is the camera viewer active when you start Skype? Close camera viewer and restart Skype.
	What to do if images on camera viewer screen are not smooth or computer does not run smoothly? Click [Tools] – [Privacy] – [Manage other programs’ access to Skype API] and delete redundant applications.

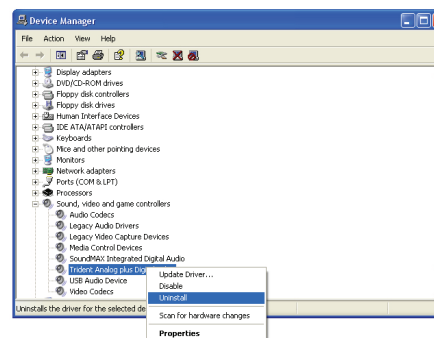
Unable to talk (No sound is heard).	Did you press [CONTROL] on screen key? Please press [TALK] key.
	Did you use a headset or a speaker while the lightsaber is connected to the stand? Disconnect the headset or speaker.
	Is the audio device setting correct? Click [Tools] – [Options] – [Sound Devices] and make sure that the followings has been selected for “Audio In” and “Audio Out”. <ul style="list-style-type: none"> <li>• <b>When talking using lightsaber</b>                      Audio In: USB Audio Device                      Audio Out: USB Audio Device</li> <li>• <b>When using a commercial headset</b>                      (When the headset is connected to mic terminal on the computer and speaker terminal)                      Audio In: Windows Default Device                      Audio Out: Windows Default Device</li> </ul>
	Is the volume setting correct? Set the volume using the following methods.

	<ol style="list-style-type: none"> <li>1. On Windows, click [Start] – [Control Panel] – [Sound, Voice and Audio Device] – [Sound and Audio Device]. (For Windows 2000), click [Start] – [Settings] – [Control Panel] and double-click [Sound and Audio Device].</li> <li>2. Click [Audio] tab.</li> <li>3. Click [Volume] button on [Sound playback] and adjust the volume, balance and tone on the displayed screen.</li> <li>4. Make the similar settings for [Sound recording].</li> <li>5. Click [OK] button.</li> </ol>
Talk is interrupted.	<p>Talk may be interrupted if microphone volume on talking person side is too loud. Reduce the microphone volume.</p> <p>Delay may occur and talk may not be smooth if Skype line is congested.</p>

※ Input of computer sound is described as “sound recording”. It does not mean actual sound recording.

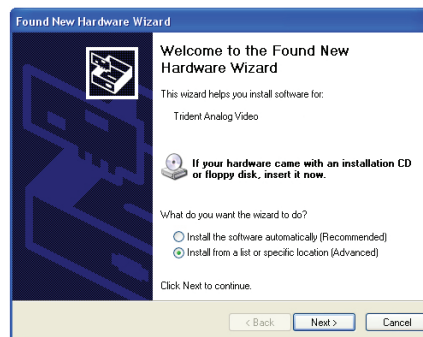
### How to change device driver

This document describes how to change the device driver when you upgrade/update to a new software or in the event that there is a trouble in operation due to malfunction of the device driver.



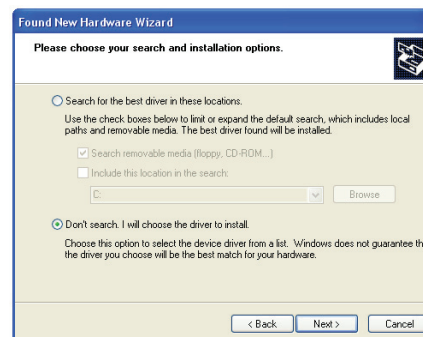
### Device manager

Before you start to reinstall the driver, delete the existing “Trident ~ Video” on the Device Manager screen.

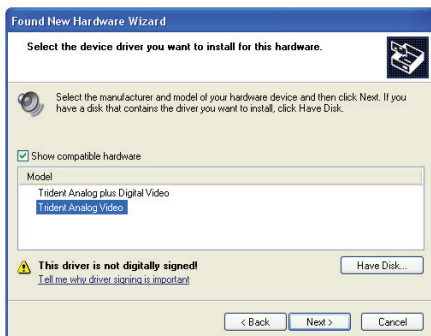


After the ordinary installation using a CD (which contains the device driver) has completed, connect the stand with the USB cable.

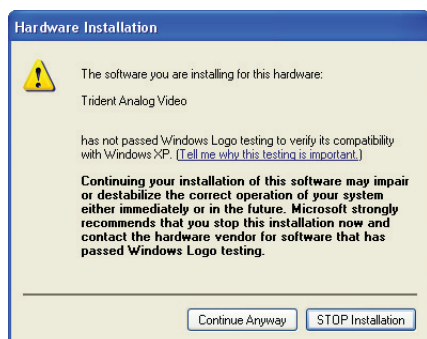
Check “Install from list or specific location” and then click [Next].



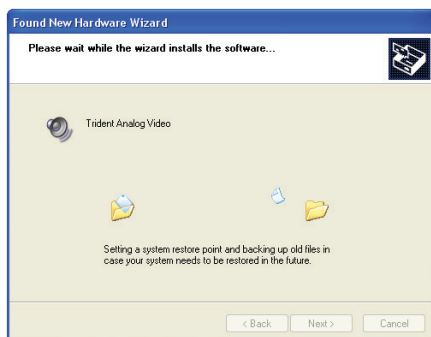
On the subsequently displayed screen, check the [Select the driver to be installed without performing a search] and then click [Next].



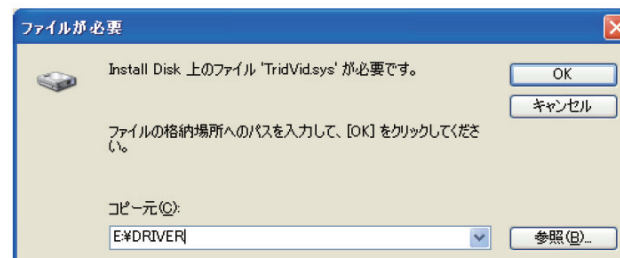
Select the appropriate device driver and then click [Next]. Usually, choose “Trident Analog Video”.



The device driver to be installed will be displayed on the screen. Confirm and click [Next] if the device driver is correct.



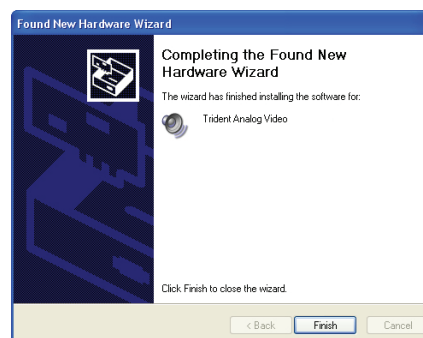
Copying of the file is resumed.



The screen requiring insertion of the installation CD or the screen shown above will be displayed.

If the screen requiring insertion of the installation CD is displayed, insert it.

If the screen shown above is displayed, click [References] to display the file selection screen. Open the driver folder in the root of the CD drive and select “TridVid”. Click [Open] and then return to the screen shown above. Click [OK].



Click [Complete] to complete the changing of the device driver.

# Specifications

## • R2-D2 (Web camera)

Image sensor	CMOS
Resolution	510×492 (NTSC) 628×582 (PAL)
View angle	62°
Min. illuminance	5lux/F1.2
Transmit frequency	ISM 2.4GHz ~ 2.483GHz
Transmit power	10mW/CE ; 2mW/FCC
Modulation method	FM
Bandwidth	18MHz
RC function	11 functions
Power supply	6 AA alkaline dry cell batteries
Power consumption	80mA
Dimension (WxDxH)	136×200×130 mm
Weight	450g (including batteries)
Operating temperature	5 ~ 35°C (41 ~ 95°F)
Control distance	7 meters
Camera Transmission distance	7 meters

## • Lightsaber (USB phone)

Environmental noise	≤ 60VdB (A)
Power supply	2 AA alkaline dry cell batteries
Power consumption	80mA
Frequency band of speaker	20Hz ~ 10KHz
Frequency band of microphone	70Hz ~ 20KHz
Dimension (WxDxH)	283×65×63 mm
Weight	110g (including batteries)
Operating temperature	5 ~ 35°C (41 ~ 95°F)

## • Stand (controller)

### Video receiver

Receiver frequency	ISM 2.4GHz ~ 2.483GHz
Intermediate frequency	480MHz
Modulation method	FM
Receiver sensitivity	≤-85dBm
Operating temperature	5 ~ 35°C (41 ~ 95°F)

### Radio controller

Frequency	26.995MHz(BAND1) 27.195MHz(BAND5)
Modulation method	ASK

### General

Interface	USB 2.0
Power supply	DC5.0V (USB bus power)
Power consumption	Max. 310mA
Dimension (WxDxH)	232×106×110mm
Weight	450g
Operating temperature	5 ~ 35°C (41 ~ 95°F)



## FCC Certifications

This equipment has been tested and found to comply with the limits for a Class B digital device, pursuant to Part 15 of FCC Rules. These limits are designed to provide reasonable protection against harmful interference in a residential installation. This equipment generates, uses, and can radiate radio frequency energy. If not installed and used in accordance with the instructions, it may cause harmful interference to radio communications. However, there is no guarantee that interference will not occur in a particular installation. If this equipment does cause harmful interference to radio or television reception, which can be determined by tuning the equipment off and on, the user is encouraged to try and correct the interference by one or more of the following measures:

- Reorient or relocate the receiving antenna.
- Increase the distance between the equipment and the receiver.
- Connect the equipment to outlet on a circuit different from that to which the receiver is connected.
- Consult the dealer or an experienced radio/TV technician for help.

Operation of this equipment in a residential area is likely to cause harmful interference in which case the user will be required to correct the interference at this own expense.

This device complies with Part 15 of the FCC rules. Operation is subject to the following two conditions: (1) this device may not cause harmful interference, and (2) this device must accept any interference received; including interference that may cause undesired operation.