

1/16 STREET CAR

© NIKKO

ATTENTION PARENTS

It is recommended that this toy and all accessories be periodically examined for potential hazards and that any potentially hazardous parts be repaired or replaced.

- Please read carefully before starting to operate.
- "Warning! use under the direct supervision of an adult.
- Keep the operation manual and display box for future reference.
- Use 6 x "AA" size alkaline (1.5V) or Ni-Cd (1.2V)batteries.(NOT INCLUDED) and 006P(9V)battery.(NOT INCLUDED)

Repair and Parts Department
Monday to Friday 8:30AM-
5:30PM Central Time
Repair:(800)736-4556
Parts:(800)776-4556
Fax:(972)578-7059
e-mail:nikkocs@airmail.net

For ages 8 and up.

NIKKO
AMERICA, INC

PRINTED IN CHINA

FEATURES

- Full function
Runs forward backward, turns left & right, stop.

BATTERY REQUIREMENTS

(Not included)

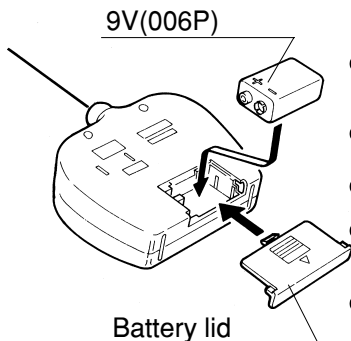
Vehicle: 6 x AA alkaline(1.5V)
or Ni-Cd(1.2V)batteries

Transmitter:1 x 9V(006P)battery

Please read the instructions before starting to operate. Without any precautions, the vehicle may move without your command or there may be overheating or batteries or power motor. Additionally, the vehicle should be kept out of the reach of very young children.

1 BATTERY INSTALLATION

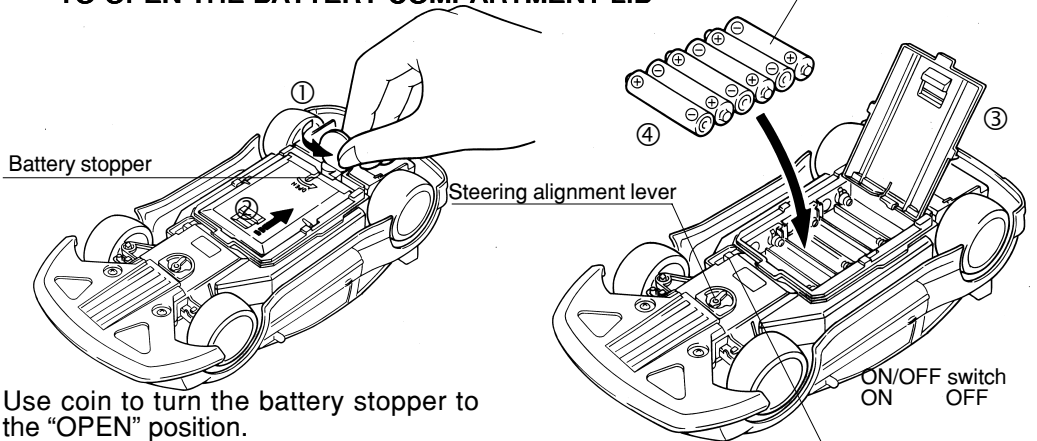
■ TRANSMITTER



CAUTION WHEN USING BATTERIES

- Install batteries making sure that the ⊕ and ⊖ poles of the batteries are positioned accurately.
- Make sure vehicle's on-off switch is turned OFF when installing batteries.
- Avoid combined use of new dry batteries and old ones.
- Avoid combined use of Ni-Cd batteries and dry batteries.
- Avoid combined use of charged Ni-Cd batteries and discharged Ni-Cd batteries.
- Remove all the batteries from the vehicle and the transmitter after playing.

■ VEHICLE TO OPEN THE BATTERY COMPARTMENT LID



Use coin to turn the battery stopper to the "OPEN" position.

Let the battery compartment lid slide forward a little with a pressure on to the latch.

Then, the battery compartment lid can be pulled and open.

3 MAJOR CAUSES OF VEHICLE MALFUNCTION
***WEAK BATTERIES**
***INCORRECT BATTERY INSTALLATION**
***INTERFERENCE**

***Do not mix old and new batteries.**

***Install batteries accurately in the battery compartment.**

***Do not mix alkaline, standard [carbon-zinc], or rechargeable [nickel-cadmium] batteries.**

CAUTION

- Install batteries making sure that the (+) and (-) poles of the batteries are positioned accurately.
- Avoid combined use of charged Ni-Cd batteries and discharged Ni-Cd batteries and discharged Ni-Cd batteries.
- Do not mix old batteries with new batteries.
- Avoid using alkaline batteries and Ni-Cd batteries together.

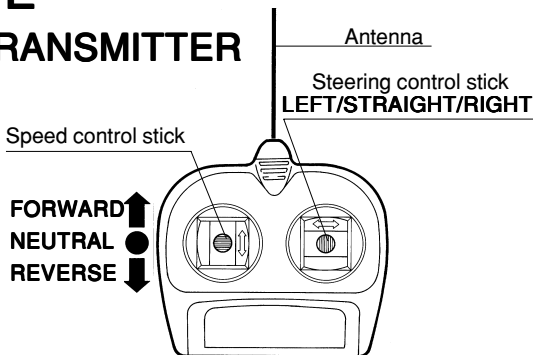
2 HOW TO OPERATE

- ① Turn ON the vehicle.
- ② Operate the vehicle with transmitter.
- ③ Turn OFF the vehicle after operating.

■ TRANSMITTER

- ④ Remove all the batteries both from the vehicle and the transmitter.

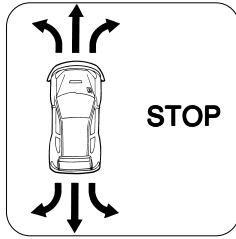
* Please follow the above sequence of operation.



ANTI-POWER LOSS TRANSMITTER (To prevent unnecessary power loss)

The transmitter power is automatically turned ON when the speed control stick is operated either to the forward running or reverse running positions. When the stick is returned to the neutral position, the transmitter power is turned OFF. When the transmitter power is turned OFF, the vehicle can be jammed by other transceiver radio waves and start to move abnormally.

■ VEHICLE



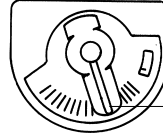
* Check to see that the batteries have been INSTALLED in the CORRECT position.

NOTE:

- You can control the vehicle at a longer distance by holding the transmitter higher with the antenna straight up.
- When the vehicle slows down or starts moving erratically, replace all the vehicle's batteries with fresh or fully charged ones.

TO ADJUST STEERING ALIGNMENT

Adjust the steering alignment lever on the underside of the vehicle when the vehicle doesn't run straight forward.



Steering alignment lever

3 OPERATING SAFETY RULES

Select a SAFE place to operate your vehicle. Do not drive in the street. Avoid driving on SAND or through puddles of WATER. These hazards can impair performance. Check the surface ahead of you and watch for obstacles.

The radio receiver in your vehicle and transmitter are sensitive instruments. Do not leave Vehicle or Transmitter near sources of HEAT or under DIRECT SUNLIGHT for long periods of time.

Avoid leaving Vehicle or Transmitter OUTSIDE OVERNIGHT. NIGHT DAMPNESS IS HARMFUL TO INTERIOR MECHANISM.



RADIO INTERFERENCE: Sometimes erratic behavior or loss of control of vehicle is the result of interference caused by high tension wires, high voltage transformers, certain types of building, concrete walls or narrow places where RADIO SIGNALS sent from your transmitter MAY BE SCATTERED thus making it DIFFICULT for your vehicle to receive a GOOD RADIO SIGNAL. If you encounter this type of behavior or loss of control, CHANGE TO A DIFFERENT LOCATION.

You will encounter INTERFERENCE if ANOTHER radio controlled vehicle or CB radio is operating in the vicinity on your SAME FREQUENCY.

Cleaning and maintenance:

This toy vehicle needs periodic maintenance and cleaning.

Caution

Keep out of reach of small children under 36 months old as there is danger of getting hurt.

THE FCC WANTS YOU KNOW

This device complies with part 15 of the FCC Rules, Operation is subject to the following two conditions:

- (1) This device may not cause harmful interference.
- (2) This device must accept any interference received, including interference that may cause undesired operation.

Your R/C car might cause TV or radio interference even when it is operating properly.

To determine whether your R/C car is causing the interference, turn off your R/C car.

If the interference goes away, your R/C car is causing the interference.

Try to eliminate the interference by:

- Moving your R/C car away from the receiver.
- Contacting your local store for help.

If you cannot eliminate the interference, the FCC requires that you stop using your R/C car.

CHANGES OR MODIFICATIONS NOT EXPRESSLY APPROVED BY THE MANUFACTURER FOR COMPLIANCE COULD VOID THE USER'S AUTHORITY TO OPERATE THE EQUIPMENT.