

1/24 RADIO CONTROL CAR

Owner's Manual

Repair and Parts Department
Monday to Friday 8:30AM-5:30PM
Central Time

Repair:(800)736-4556
Parts:(800)776-4556
Fax:(972)578-7059
e-mail:nikkocs@airmail.net

ATTENTION PARENTS

It is recommended that this toy and all accessories be periodically examined for potential hazards and that any potentially hazardous parts be repaired or replaced.

NIKKO
AMERICA, INC

- Please read carefully before starting to operate.
 - Warning! use under the direct supervision of an adult.
 - KEEP THE DISPLAYBOX AND THE MANUAL FOR FUTURE REFERENCE.
- * You can enjoy various driving by using optional parts sold separately. (Refer to the manual for optional parts.)

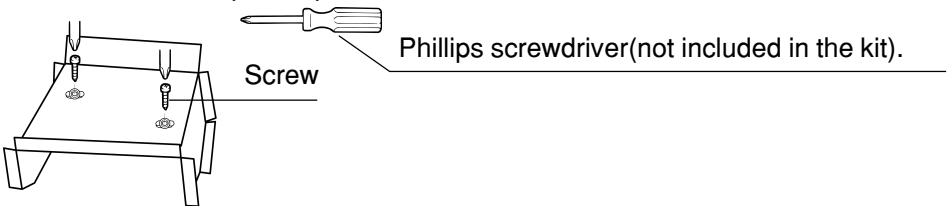
BATTERY REQUIREMENTS

Transmitter: 1 x 9 V (6F22)battery

Vehicle: 3x AA alkaline (1.5V) or Ni-Cd(1.2V)batteries

HOW TO REMOVE THE CAR

- Remove two screws on the bottom side of the board with a phillips screwdriver as shown in a figure, and remove the car from the board. Be careful not lose plastic parts and screws.



How to install transmitter antenna

- Place the transmitter antenna into the antenna holder and screw it in clockwise. Do not install the antenna extended. If the antenna is not screwed in securely, the vehicle may not move at your control. Screw the antenna securely.



BATTERY INSTALLATION

CAUTION WHEN USING BATTERIES

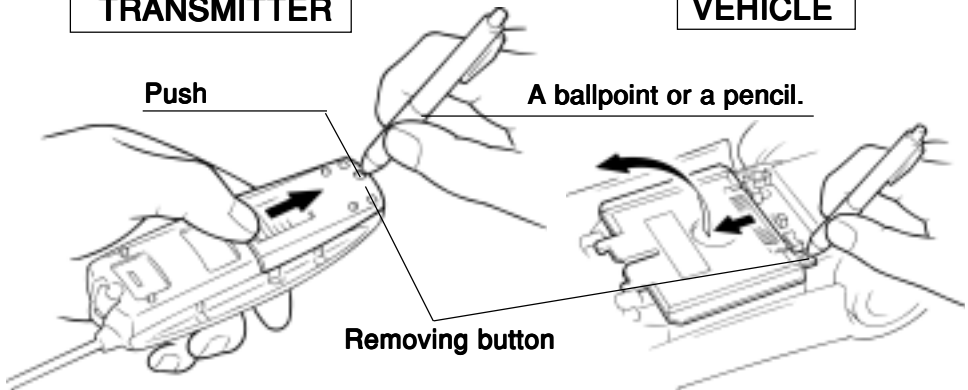
- Install battery making sure that + and - poles of the battery are positioned properly.
- Make sure vehicle's on-off switch is turned OFF when installing battery.
- Remove all the batteries from the vehicle and the transmitter after playing.
- Avoid combined use of new dry batteries and old ones.
- Avoid combined use of Ni-Cd batteries and dry batteries.
- Avoid combined use of charged Ni-Cd batteries and discharged Ni-Cd batteries.

TO OPEN THE BATTERY COMPARTMENT LID

- When you remove the battery compartment cover, press a removing button using a ballpoint or a pencil with a sharp point, then slide the cover.
- Slide the cover backward by a finger and remove the cover.
- When you open the cover, be careful not to break a lead.

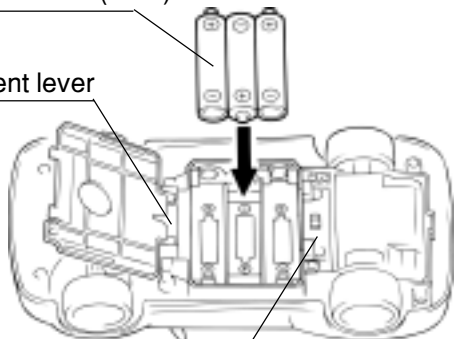
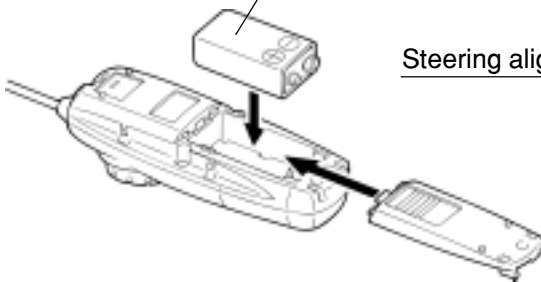
TRANSMITTER

VEHICLE



One 6F22(9V) battery

3x AA alkaline (1.5V) or Ni-Cd(1.2V)batteries



3 MAJOR CAUSES OF VEHICLE MALFUNCTION

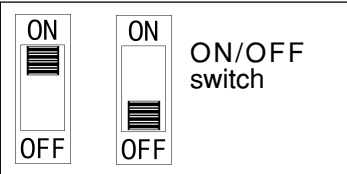
- *WEAK BATTERIES
- *INCORRECT BATTERY INSTALLATION
- *INTERFERENCE

Check to see that the battery is **INSTALLED** in the **CORRECT** position.

CAUTION:

- Check the batteries regularly for leakage.
- Remove empty batteries from the toy.
- Never try to charge non-rechargeable batteries.
- Never short-circuit the terminals.

HOW TO PLAY



1. Turn ON the vehicle.
2. Operate the vehicle with transmitter.
3. Turn OFF the vehicle after operating.
4. Remove all the batteries both from the vehicle and the transmitter.

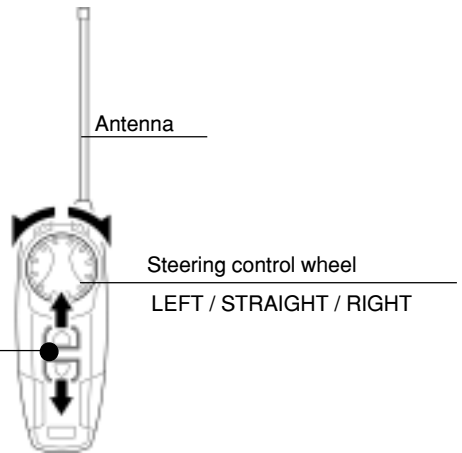
* Please follow the above sequence of operation.

Transmitter

ANTI-POWER LOSS TRANSMITTER

(To prevent unnecessary power loss)

The transmitter power is automatically turned ON when the speed control stick is operated either to the forward running or reverse running positions. When the stick is returned to the neutral position, the transmitter power is turned OFF. When the transmitter power is turned OFF, the vehicle can be jammed by other transceiver radio waves and start to move abnormally.



Vehicle



NOTE:

- You can control the vehicle at a longer distance by holding the transmitter higher with the antenna straight up.
- When the vehicle slows down or starts moving erratically, replace all the vehicle's batteries with fresh ones.

TO ADJUST STEERING ALIGNMENT

Adjust the steering alignment lever on the underside of the vehicle when the vehicle does not run straight.

Steering alignment lever



OPERATING SAFETY RULES

Select a **SAFE** place to operate your vehicle. Do not drive in the street. Avoid driving on **SAND** or through puddles of **WATER**. These hazards can impair performance. Check the surface ahead of you and watch for obstacles. The radio receiver in your vehicle and transmitter are sensitive instruments. Do not leave Vehicle or Transmitter near sources of **HEAT** or under **DIRECT SUNLIGHT** for long periods of time.

Avoid leaving Vehicle or Transmitter **OUTSIDE OVERNIGHT**.

NIGHT DAMPNESS IS HARMFUL to **INTERIOR MECHANISM**.

DO NOT try to take apart or remodel any of the parts.

CHANGES OR MODIFICATIONS NOT EXPRESSLY APPROVED BY THE MANUFACTURER FOR COMPLIANCE COULD VOID THE USER'S AUTHORITY TO OPERATE THE EQUIPMENT.

RADIO INTERFERENCE: Sometimes erratic behavior or loss of control of vehicle is the result of interference caused by high tension wires, high voltage transformers certain types of building, concrete walls or narrow places where **RADIO SIGNALS** sent from your transmitter **MAY BE SCATTERED** thus making it **DIFFICULT** for your vehicle to receive a **GOOD RADIO SIGNAL**. If you encounter this type of behavior or loss of control, **CHANGE TO A DIFFERENT LOCATION**.

You will encounter **INTERFERENCE** if **ANOTHER** radio controlled vehicle or **CB** radio is operating in the vicinity on your **SAME FREQUENCY**.

Cleaning and maintenance:

This toy vehicle needs periodic maintenance and cleaning.

Caution

Keep out of reach of small children under 36 months old as there is danger of getting hurt.

DO NOT operate your vehicle on thick-piled carpets. It can be dangerous since the carpet fiber may twine round a shaft and cause a motor overheated.



THE RBRC™ Seal on the nickel cadmium battery pack indicates that Nikko America is voluntarily participating in an industry program to collect and recycle these batteries at the end of their useful life. The RBRC program provides a convenient alternative to disposing nickel-cadmium batteries into the trash or municipal waste stream, which is illegal in some areas.

Nikko America's payments to RBRC makes it easy for you to drop off the spent battery pack at local retailers who sell replacement nickel-cadmium batteries.

You may also contact your local recycling center for information on where to return the spent battery pack.

RBRC is a trademark of the Rechargeable Battery Recycling Corporation.

THE FCC WANTS YOU KNOW

This device complies with part 15 of the FCC Rules, Operation is subject to the following two conditions:

(1) This device may not cause harmful interference.

(2) This device must accept any interference received, including interference that may cause undesired operation.

Your R/C car might cause TV or radio interference even when it is operating properly.

To determine whether your R/C car is causing the interference, turn off your R/C car.

If the interference goes away, your R/C car is causing the interference.

Try to eliminate the interference by:

- Moving your R/C car away from the receiver.
- Contacting your local store for help.

If you cannot eliminate the interference, the FCC requires that you stop using your R/C car.