

Installation Manual

This module is to be installed only by the professionals and used only with a Digital Camera produced by Nikon Corporation. When this module is installed in the Digital Camera, we shall consider the following points;

1. Since “2143EB” owns its FCC ID Number/IC Number, we shall affix an exterior label on the outside of the product if the FCC ID/IC Number is not visible. The exterior label shall use wording such as either ”Contains Transmitter Module FCC ID: CGJ2143EB / IC Number: 4634A-2143EB” or “Contains FCC ID: CGJ2143EB / IC: 4634A-2143EB”.
2. “2143EB” complies with requirements of sub-sections 15.19(a)(3) in FCC Rules Part 15 Subpart C. The manual statement (15.19 (a)(3) is included User Guide of the product.
3. “2143EB” is to be installed only by the professional line operator as shown in following pictures. (Fig1, 2, and 3)

Fig1. Front side of “2143EB”

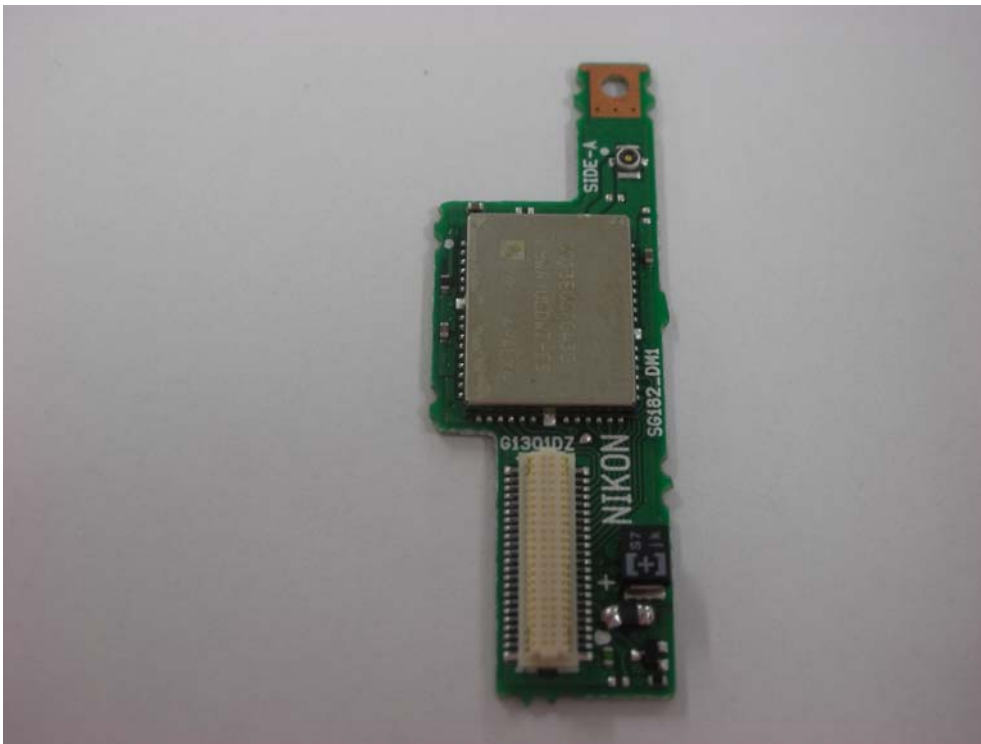
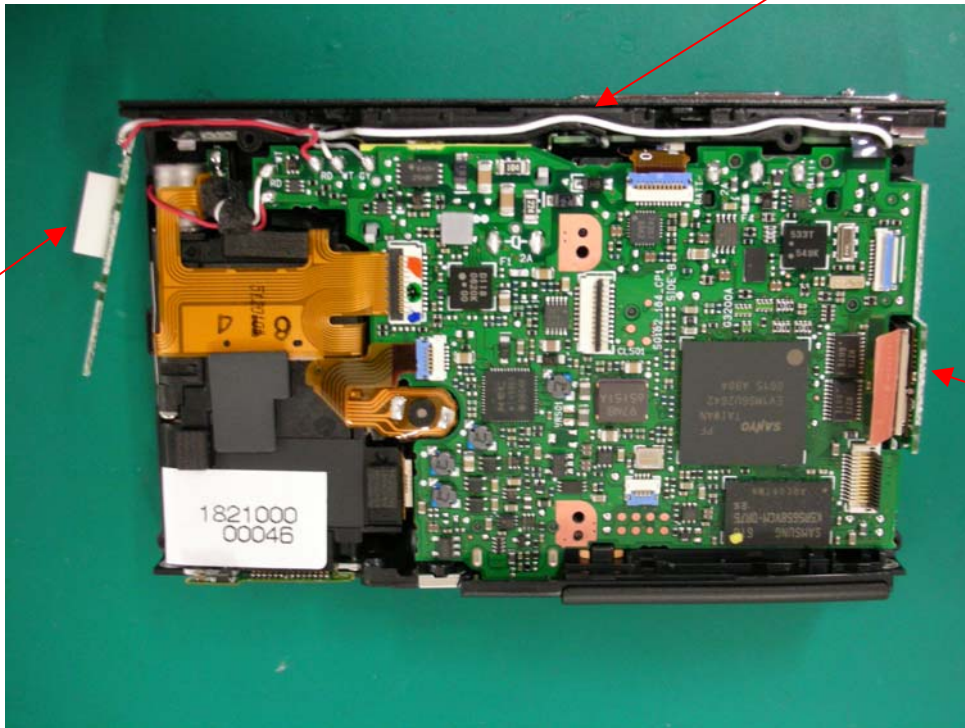


Fig2. Top view of “2143EB” be equipped for a digital camera (example)

Connector Cable
between Antenna and
Module

Antenna



Module

Fig3. Side view of “2143EB” be equipped for a digital camera (example)



There isn't an official user manual for this Wireless LAN Module (2143EB). However, user manuals of final product which have the module, must contain notification corresponding to the following description.

Changes or modifications not expressly approved by the party responsible for compliance could void the user's authority to operate the equipment.

This equipment has been tested and found to comply with the limits for a Class B digital device, pursuant to part 15 of the FCC Rules. These limits are designed to provide reasonable protection against harmful interference in a residential installation. This equipment generates, uses and can radiate radio frequency energy and, if not installed and used in accordance with the instructions, may cause harmful interference to radio communications. However, there is no guarantee that interference will not occur in a particular installation. If this equipment does cause harmful interference to radio or television reception, which can be determined by turning the equipment off and on, the user is encouraged to try to correct the interference by one or more of the following measures:

- Reorient or relocate the receiving antenna
- Increase the separation between the equipment and receiver.
- Connect the equipment into an outlet on a circuit different from that to which the receiver is connected.
- Consult the dealer or an experienced radio/TV technician for help.

Properly shielded a grounded cables and connectors must be used for connection to host computer and / or peripherals in order to meet FCC emission limits. AC adaptor with ferrite core must be used for RF interference suppression.

(This device complies with Part 15 of FCC Rules and RSS-Gen of IC Rules)
Operation is subject to the following two conditions: (1) this device may not cause interference, and (2) this device must accept any interference, including interference that may cause undesired operation of this device.

This transmitter must not be co-located or operated in conjunction with any other antenna or transmitter.

The available scientific evidence does not show that any health problems are associated with using low power wireless devices. There is no proof, however, that these low power wireless devices are absolutely safe. Low power Wireless devices emit low levels of radio frequency energy (RF) in the microwave range while being used. Whereas high levels of RF can produce health effects (by heating tissue), exposure to low-level RF that does not produce heating effects causes no known adverse health effects. Many studies of low-level RF exposures have not found any biological effects. Some studies have suggested that some biological effects might occur, but such findings have not been confirmed by additional research. Wireless LAN Module (2143EB) has been tested and found to comply with FCC/IC radiation exposure limits set forth for an uncontrolled equipment and meets the FCC radio frequency (RF) Exposure Guidelines in Supplement C to OET65 and RSS-102 of the IC radio frequency (RF) Exposure rules. Please refer to the SAR test report that was uploaded at FCC website.