

Installation Manual

This module is to be installed only by the professionals and used only with a Digital Camera produced by Nikon Corporation. When this module is installed in the Digital Camera, we shall consider the following points;

1. Since “GC-131” owns its FCC ID Number, we shall affix an exterior label on the outside of the product if the FCC ID is not visible. The exterior label shall use wording such as either ”Contains Transmitter Module FCC ID: CGJ3143EB” or “Contains FCC ID: CGJ3143EB”.
2. “GC-131” complies with requirements of sub-sections 15.19(a)(3) in FCC Rules Part 15 Subpart C. The manual statement (15.19 (a)(3) is included User Guide of the product.
3. “GC-131” is to be installed only by the professional line operator as shown in following pictures. (Fig 1 and 2)

Fig 1. Front side of “GC-131”

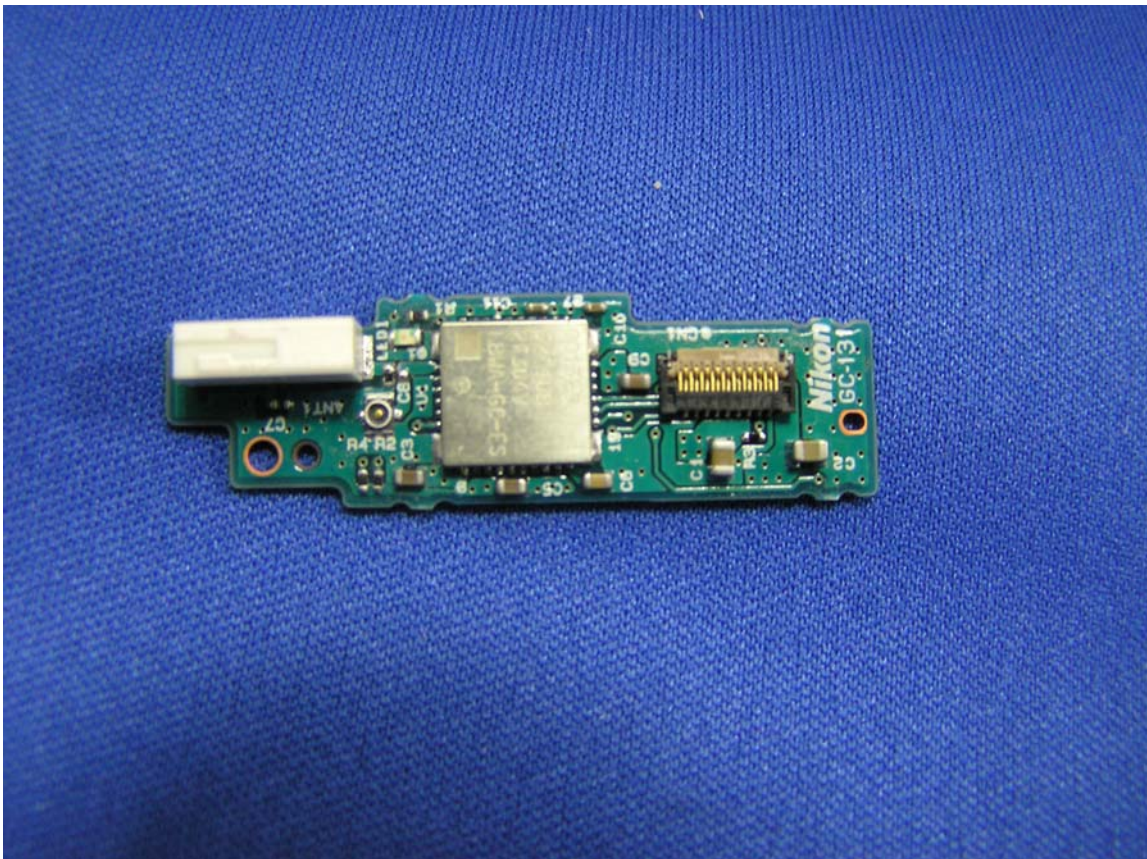
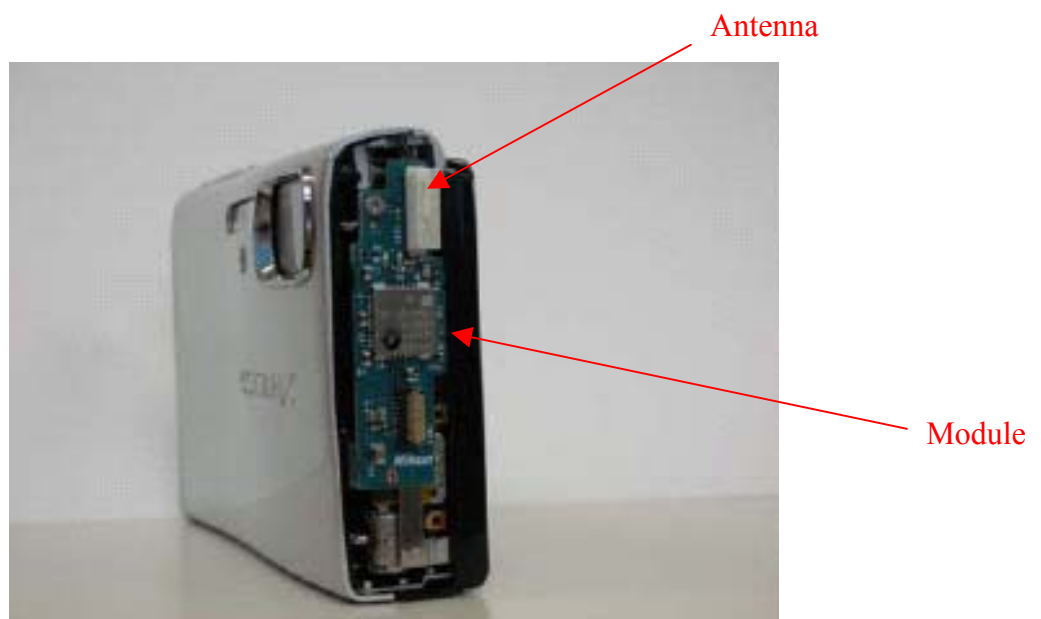


Fig 2. Top view of “GC-131” be equipped for a digital camera (example)



There isn't an official user manual for this Wireless LAN Module (3143EB). However, user manuals of final product which have the module, must contain notification corresponding to the following description.

Changes or modifications not expressly approved by the party responsible for compliance could void the user's authority to operate the equipment.

(This device complies with Part 15 of FCC Rules and RSS-Gen of IC Rules)
Operation is subject to the following two conditions: (1) this device may not cause interference, and (2) this device must accept any interference, including interference that may cause undesired operation of this device.

This transmitter must not be co-located or operated in conjunction with any other antenna or transmitter.

The available scientific evidence does not show that any health problems are associated with using low power wireless devices. There is no proof, however, that these low power wireless devices are absolutely safe. Low power Wireless devices emit low levels of radio frequency energy (RF) in the microwave range while being used. Whereas high levels of RF can produce health effects (by heating tissue), exposure to low-level RF that does not produce heating effects causes no known adverse health effects. Many studies of low-level RF exposures have not found any biological effects. Some studies have suggested that some biological effects might occur, but such findings have not been confirmed by additional research. Wireless LAN Module (3143EB) has been tested and found to comply with FCC/IC radiation exposure limits set forth for an uncontrolled equipment and meets the FCC radio frequency (RF) Exposure Guidelines in Supplement C to OET65 and RSS-102 of the IC radio frequency (RF) Exposure rules. Please refer to the SAR test report that was uploaded at FCC website.