

## Wireless LAN Connection

### 8 Choose the connection method.

Available profile types (see the list below) for your wireless LAN will be displayed on screen. Select the desired profile type and click [Next].

When selecting [Create an Ad-hoc (Camera to Computer) network profile], proceed to step 11 (133).

If multiple wireless LAN devices are connected to the computer, choose a device from the pop-up menu. Select the desired configuration type from the options listed. Options displayed will differ depending on the selected wireless device.



Type of Profile	Description
Infrastructure (Access Point) network profile	For use when connecting the camera and computer via an infrastructure network. An infrastructure network must be configured beforehand.
Ad-hoc (Camera to Computer) network profile	For use when establishing a one-to-one connection (when a wireless LAN access point is not available) between the camera and computer.
Infrastructure (Access Point) and Ad-hoc (Camera to Computer) network profiles	Recommended for users of multiple wireless network profiles.
Create Profile manually	For use with manual settings. Only [Create Profile manually] is available when: - configuration for wireless LAN network is not performed using the wireless network setting function (Zero Config) for Windows XP - using a Windows XP SP1 or Mac OS X operating system - your computer has a fixed IP address

**Note on Choosing [Create an Ad-hoc (Camera to Computer) network profile] on Windows XP**

- When configuring a profile device using an ad-hoc network between the camera and computer, the computer's fixed IP address (manually entered IP address) will be automatically set to "169.254.x.x". When adding an infrastructure network later, set the computer to automatically obtain an IP address. For the added network profiles, configure wireless settings between the camera and computer again.
- [Create an Ad-hoc (Camera to Computer) network profile] cannot be selected if an infrastructure network has already been set up in your computer, or the fixed IP address is not "169.254.x.x".

Wireless Transfer Mode

## Wireless LAN Connection

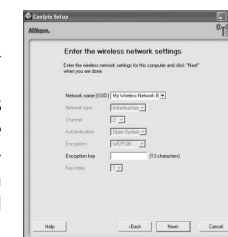
### 9 Enter network settings.

Enter the settings for connecting the camera and computer via a wireless network.

When selecting [Create an Infrastructure (Access Point) network profile] or [Create Infrastructure (Access Point) and Ad-hoc (Camera to Computer) network profiles] in step 8, select a network name from the [Network Name (SSID)] list. This name will be used when connecting the camera and computer.

When selecting [Create Profile manually] in step 8, manually enter the same values set in the computer for all items except those that are automatically provided. See "Settings for the Setup Utility" for reference (135).

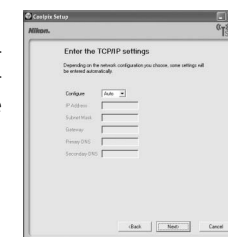
When settings are complete, click [Next].



### 10 Configure TCP/IP.

When selecting [Create Profile manually] in step 8, or if the screen in step 8 does not appear, manually enter the address type and IP address, referring to those used in "Settings for the Setup Utility" (135).

When settings are complete, click [Next].

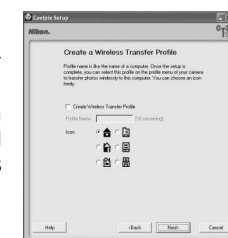


### 11 Set profile name and icon.

Enter a profile name (up to 16 single-byte alphanumeric characters).

The entered profile name will appear in the selection list for the profile device (149). We recommend selecting a name that will let you easily tell devices apart, such as "Desktop-Home".

When settings are complete, click [Next].



Wireless Transfer Mode

## Wireless LAN Connection

### 12 Configure wireless printing.

If a printer is connected to the computer, check [Create Wireless Printing Profile] and select the printer to be used for wireless printing (ⓧ XX).

Enter a profile name (up to 16 single-byte alphanumeric characters), select a printer, and click [Next].

If no printers are connected to the computer, click [Next] without selecting a printer.



### 13 Configure COOLPIX CONNECT.

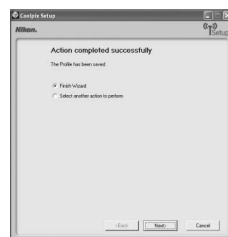
If using COOLPIX CONNECT, enter the profile name for COOLPIX CONNECT.

- Check [Create a COOLPIX CONNECT Profile] and enter a profile name (up to 16 single-byte alphanumeric characters) and click [Next].



### 14 Settings are complete.

Select [Finish wizard] and click [Next].



### 15 Disconnect the computer and camera.

Turn off the camera before disconnecting the AV/USB cable.

## Wireless LAN Connection

### Settings for the Setup Utility

When configuring a profile using the Setup Utility, refer to the description for each item listed below. Settings are the same for Windows and Macintosh.

\* Mandatory items

Setting	Description										
<b>Network name (SSID)*</b>	Enter the network ID for the computer. Choose a value displayed. If multiple values are displayed, select one.										
<b>Network type*</b>	Select [Ad-hoc] or [Infrastructure]. The camera and computer must be set to the same configuration. <ul style="list-style-type: none"> <li>• Ad-hoc mode: This mode establishes a peer-to-peer (one-to-one) connection between the camera and computer.</li> <li>• Infrastructure mode: This mode connects the camera and computer via a wireless LAN access point.</li> </ul>										
<b>Channel</b>	Mandatory if [Ad-hoc] is selected for [Network type]. Select the same channel (1 to 11) set in the computer.										
<b>Authentication</b>	Select [Open System], [Shared Key], [WPA-PSK]* or [WPA2-PSK]* (* [Infrastructure] only). Select the same method set in the computer or access point.										
<b>Encryption</b>	Available methods for the camera differ depending on the selected authentication method (see below). Select the same method set in the computer or access point. <table border="1" style="margin: 5px auto;"> <thead> <tr> <th>Selected authentication method</th> <th>Available security method(s) for the camera</th> </tr> </thead> <tbody> <tr> <td>[Open System]</td> <td>[None], [WEP]</td> </tr> <tr> <td>[Shared Key]</td> <td>[WEP]</td> </tr> <tr> <td>[WPA-PSK]</td> <td>[TKIP]</td> </tr> <tr> <td>[WPA2-PSK]</td> <td>[AES]</td> </tr> </tbody> </table>	Selected authentication method	Available security method(s) for the camera	[Open System]	[None], [WEP]	[Shared Key]	[WEP]	[WPA-PSK]	[TKIP]	[WPA2-PSK]	[AES]
Selected authentication method	Available security method(s) for the camera										
[Open System]	[None], [WEP]										
[Shared Key]	[WEP]										
[WPA-PSK]	[TKIP]										
[WPA2-PSK]	[AES]										
<b>Encryption key</b>	Enter the security key set in the computer or access point (unnecessary when [Encryption] is set to [None]).										
<b>Key index</b>	When [Encryption] is set to [WEP], and infrastructure mode is used, select the same key index set in the computer or access point (unnecessary when [Encryption] is set to [None], [TKIP] or [AES]). The default setting is [1].										
<b>Configure*</b>	Select [Auto] (default setting) or [Manual] for the method of setting the camera IP address.										
<b>IP Address</b>	When [Configure] is set to [Manual], enter the IP address for the camera.										

## Wireless LAN Connection

### Wireless LAN Channels

Wireless LAN channels for the COOLPIX S50c are from 1 to 11. Make sure that the channel for your computer's wireless LAN device is set to a channel between 1 and 11 (inclusive).

### MAC Address Filtering

When MAC address filtering is enabled, only devices with an authorized MAC address can access the wireless LAN. Check the camera's MAC address in [Firmware Version] of the setup menu (XX XX) and add it to the authorized list.

### Port Number

For wireless communication, the UDP port number is "5353" and the TCP port number is "15740". If the computer or access point has a firewall, the firewall settings may need to be changed.

### Notes on Profile Devices

Configure profiles for each computer using the Setup Utility and install the Setup Utility to each computer to transfer (receive) pictures from the camera remotely.

### Managing Device Profiles

- You can configure a maximum of nine profile devices (computers, printers connected to a computer, etc.) in the camera. If nine have already been configured and you want to add a new one, delete an unneeded profile device using the Setup Utility.
- Start the Setup Utility while the camera is connected to a computer via AV/USB cable, and you can rename or delete profiles. Choose [Rename/Delete profiles] in the action selection screen of the Setup Utility and click [Next]. Then choose a profile you wish to rename or delete and click [Rename] or [Delete]. You can also confirm the details of a profile by clicking [View Profile]. Choose [Reset camera] in the action selection screen to delete all profiles (all address book contents are also deleted).


Wireless Transfer Mode

## Wireless LAN Connection

### Configuring Wireless LAN Settings from the Camera

Select [Wireless settings] from the camera's setup menu (XX XX) to configure the settings indicated below for connection to a wireless LAN. Profiles and e-mail addresses, configured using the Setup Utility with the camera connected to a computer, can be modified from the camera's setup menu.

[Wireless settings]  
Screen  
T.B.D.

Setting	Description	
Network profile	Create profiles for connecting to COOLPIX CONNECT.	XX XX
Sender	Enter or edit the nickname and e-mail address used when uploading pictures to the COOLPIX CONNECT server.	XX
Recipient e-mail address	Enter or edit the nicknames and e-mail addresses used for notification of picture upload to the COOLPIX CONNECT server.	XX
Picture Bank	Choose whether pictures stored in the camera's internal memory, or on a memory card, are automatically uploaded to the COOLPIX CONNECT server when the AC adapter is connected to charge the battery. When [On] (default setting) is selected and the AC adapter is connected (camera off), pictures are automatically uploaded to Picture Bank. When [Off] is selected and the AC adapter is connected to the camera (camera off), the battery is charged.	XX
Password	Specify a password for COOLPIX CONNECT. If a password is applied, that password must be entered to use COOLPIX CONNECT.	XX
Key information	Displays the encryption key used to authenticate the camera when pictures are uploaded to Picture Bank.	XX
Confirm transfer	Select whether picture transfer requires confirmation prior to transfer when shooting in shoot and transfer mode. When [Off] (default setting) is selected, pictures are immediately transferred to the computer as they are taken. When [On] is selected, a confirmation dialog asking whether the picture should be transferred to the computer is displayed each time a picture is taken.	—

Wireless Transfer Mode

### Wireless LAN Connection

Setting	Description	
Save images	Choose whether pictures taken in shoot and transfer mode are stored in the camera's memory, or to a memory card, in addition to being transferred to the computer. When [Off] (default setting) is selected, pictures are stored only on the computer and not in the camera's memory or memory card. When [On] is selected, pictures are stored in the camera's memory or memory card as well as on the computer.	—
Show page size options	Select whether to confirm paper size when pictures are printed over a wireless connection. When [On] (default setting) is selected, the paper size screen is displayed each time a picture is printed over a wireless connection. Choose the desired paper size from the paper size screen. When [Off] is selected, the paper size screen is displayed.	—

Wireless Transfer Mode

#### Saving Pictures

If a communication error occurs while performing [Shoot & Transfer] with [Save Images] set to [Off], pictures taken are not saved. When taking pictures for important occasions, setting [Save Images] to [On] is recommended.

### Wireless LAN Connection

#### Specify Network Profiles for COOLPIX CONNECT

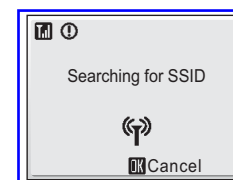
Follow the steps below to create COOLPIX CONNECT network profiles.

##### 1 Choose [Network profile] in the wireless settings screen and press .

If a password has been applied ( XX), enter the password and press the shutter-release button. For information on entering text, see "Entering Text with the Camera" ( 142).

The camera will search for available SSIDs.

[Network profile] is chosen at [Wireless settings] Screen T.B.D.



##### 2 Choose the SSID and press .

The registered SSIDs (up to ten) are listed in order of radio field strength.

Wireless connection is terminated once when the list of available SSIDs is displayed.

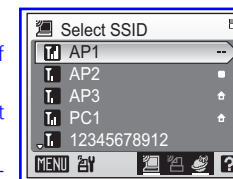
The left icon of each SSID is indicated in red when outside the network area.

The right icon indicates the type of the profile registered to each SSID:

- (profiles with home wireless LAN information),
- (profiles with no information)

If an SSID is not detected, select [New] and enter a network name (SSID) in the SSID screen. Press the shutter-release button and proceed to step 5. For information on entering text, see "Entering Text with the Camera" ( 142).

To delete an existing SSID, select the SSID and press . When the deletion confirmation dialog is displayed, select [Yes] and press to delete the selected SSID. To cancel deletion, select [Cancel] and press .



Wireless Transfer Mode

## Wireless LAN Connection


**3** Select [Home wireless LAN] for the network type and press .

Set up for public wireless LAN is available only for T-Mobile HotSpot in United States.

[Network profile]  
Screen  
T.B.D.

**4** Select the desired authentication method and press .


- When [Open system] is selected, proceed to step 5.
- When [Shared key] is selected, enter the WEP key in the WEP key screen, press the shutter-release button, and proceed to step 6.
- When [WPA-PSK] is selected, enter the TKIP key in the TKIP screen, press the shutter-release button, and proceed to step 6.
- When [WPA-PSK2] is selected, enter the AES key in the AES screen, press the shutter-release button, and proceed to step 6.

For information on how to enter text, see "Entering Text with the Camera" ( 142).

[Authentication]  
Screen  
T.B.D.

**5** Select the desired encryption method and press .

When [Encryption] is set to [None], proceed to step 6.

When [Encryption] is set to [WEP], enter the WEP key in the WEP key screen and press the shutter-release button. For information on encryption settings, see "Settings for the Setup Utility" ( 135).

[Encryption]  
Screen  
T.B.D.

[WEP key]  
Screen  
T.B.D.

Wireless Transfer Mode

## Wireless LAN Connection

**6** Set the camera's IP address or user name and password.

Choose the desired method for setting the camera's IP address and press .

- When [Configuration] is set to [Auto], connection is established.
- When [Configuration] is set to [Manual], configure the [IP address], [Subnet mask], [Gateway], [Primary DNS], and [Secondary DNS] settings, pressing the shutter-release button to apply each setting.

When all settings have been configured, "Done" will be displayed.

[Configuration]  
Screen  
T.B.D.

[IP address]  
Screen  
T.B.D.

[User name]  
Screen  
T.B.D.

[Done]  
Screen  
T.B.D.

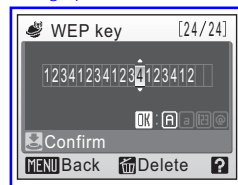
Wireless Transfer Mode

## Wireless LAN Connection

### ✓ Entering Text with the Camera

From the camera you can enter letters for information such as the e-mail address (up to 64) and its (sender) name (up to 16), user ID and password.

- Rotate the rotary multi selector clockwise, or press the rotary multi selector ▲, to enter letters (A to Z) in alphabetical order. Rotate the rotary multi selector counterclockwise, or press the rotary multi selector ▼, to enter letters in reverse order.
- Press the rotary multi selector ► to move the cursor right.
- Press the rotary multi selector ◀ to move the cursor left. Press to delete the letters at the cursor position.
- Press to change the character type in the following order: uppercase letters → lowercase letters → numbers → symbols → uppercase letters, and so on.
- Press the shutter-release button to apply selection and return to the previous screen.
- Press **T** to preview the letters that have been entered. **T** cannot be used when entering text for [IP address], [Primary DNS], [Gateway], or [Set/change password].
- Press **MENU** to return to the previous screen.



### ✓ COOLPIX CONNECT Network Profiles

When using COOLPIX CONNECT service, you can set profiles with the camera, without using the Setup Utility.

Wireless Transfer Mode

## Wireless LAN Connection

### Specifying the Sender with the Camera

#### 1 Select [Sender] in the wireless settings screen and press .

The sender information entry screen will be displayed.

If a password has been applied ( XX), enter the password and press the shutter-release button. If the message "Password incorrect." is displayed and the sender information entry screen is displayed again, press and enter the correct password. For information on entering text, see "Entering Text with the Camera" ( 142).

[Sender] is chosen at  
[Wireless settings]  
Screen  
T.B.D.

#### 2 Enter sender's nickname and press the shutter-release button.

Up to 16 single-byte alphanumerical characters can be entered for a sender's nickname. For information on entering text, see "Entering Text with the Camera" ( 142).

[Alias]  
Screen  
T.B.D.

#### 3 Enter sender's e-mail address and press the shutter-release button.

Up to 64 single-byte alphanumerical characters can be entered for a sender's e-mail address. For information on entering text, see "Entering Text with the Camera" ( 142).

[Email]  
Screen  
T.B.D.

Wireless Transfer Mode

## Wireless LAN Connection

## Specifying a Recipient

**1** Select [Choose address] in the wireless settings screen and press **OK**.

If a password has been applied (**XX**), enter the password and press the shutter-release button. If the message "Password incorrect." is displayed and the sender information entry screen is displayed again, press **OK** and enter the correct password. For information on entering text, see "Entering Text with the Camera" (**142**).

[Choose address] is chosen at [Wireless settings] Screen  
T.B.D.

**2** Select [New] and press **OK**.

Up to 30 recipient e-mail addresses can be added.

To delete a recipient, select the recipient and press **W**. When the deletion confirmation dialog is displayed, select [Yes] and press **OK** to delete the selected recipient. To cancel deletion, select [Cancel] and press **OK**.

[Choose address] Screen  
T.B.D.

**3** Enter recipient's nickname and press the shutter-release button.

Up to 16 single-byte alphanumeric characters can be entered for a recipient's nickname. For information on entering text, see "Entering Text with the Camera" (**142**).

[Alias] Screen  
T.B.D.

**4** Enter recipient's e-mail address and press the shutter-release button.

Up to 64 single-byte alphanumeric characters can be entered for a recipient's e-mail address. For information on entering text, see "Entering Text with the Camera" (**142**).

[Email] Screen  
T.B.D.

Wireless Transfer Mode

## Wireless LAN Connection

## Applying a Password for COOLPIX CONNECT

**1** Select [Password] in the wireless settings screen and press **OK**.

The set/change password screen will be displayed.

[Password] is chosen at [Wireless settings] Screen  
T.B.D.

**2** Select [Set/change password] and press **OK**.

[Set/change password] Screen  
T.B.D.

**3** Specify a password or edit the current password.

- If a password has not been applied, enter a password in the new password screen and press the shutter-release button. The password can consist of the set of four numbers.
- If a password has been applied, enter the password in the current password screen and press the shutter-release button. After the new password screen is displayed, enter a new password and press the shutter-release button.

[New password] Screen  
T.B.D.

[Current password] Screen  
T.B.D.

When a password is entered, the re-enter password screen will be displayed for confirming the password. Enter the correct password again and press the shutter-release button.




Wireless Transfer Mode

## Wireless LAN Connection

### Deleting the Password

To delete the current password, select [Delete password], enter the password to be deleted in the current password screen and press the shutter-release button.




### Resetting COOLPIX CONNECT Settings

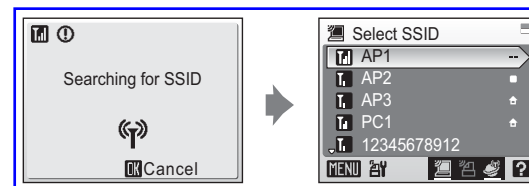
To reset the password and existing COOLPIX CONNECT network settings, select [Reset] in step 2 and press . When the confirmation dialog is displayed, select [Yes] and press . The password and all existing COOLPIX CONNECT network settings will be reset. To cancel the reset operation, select [No] in the confirmation dialog and press .


[Existing network settings will be deleted.  
OK?  
Screen  
T.B.D.]

## Establishing a Wireless Connection

When using a wireless transfer mode function, choose an SSID from those detected by the camera with wireless connection. The wireless connection is established and the camera searches for available SSIDs when the following options are selected:

- [Wireless connection] ( XX) in the shooting-mode selection menu
- Picture transfer using [COOLPIX CONNECT] ( XX) or [Wireless PC transfer] ( XX) in the playback-mode selection menu
- Picture printing using [Wireless printing] in the playback-mode selection menu



SSIDs detected by the camera will be displayed in the select SSID screen. Choose an SSID and press . The wireless connection will be established.

The registered SSIDs (up to ten) are listed in order of radio field strength.

Wireless connection is terminated once when the list of available SSIDs is displayed.

The left icon of each SSID is indicated in red when outside the network area.

The right icon indicates the type of the profile registered to each SSID:

-  (profiles with home wireless LAN information),
- (profiles with no information)

The icons at the bottom right of the select SSID indicate the functions available for the selected SSID:

-  (wireless PC connection)
-  (wireless printing)
-  (COOLPIX CONNECT)

Connection is attempted with the selected network (SSID) when picture transfer is attempted.



## Establishing a Wireless Connection

The following options are available in wireless transfer mode:

- **Immediately transferring pictures taken - shoot & transfer** (XX)
- **Uploading pictures to COOLPIX CONNECT** (XX)
- **Transferring pictures not yet saved on a computer - easy transfer** (XX)
- **Transferring pictures taken on selected date - shooting date** (XX)
- **Transferring selected pictures - selected images** (XX)
- **Transferring pictures marked for transfer - marked images** (XX)
- **Transferring pictures using a computer - PC mode** (XX)
- **Printing pictures (wireless printing)** (XX)

### Wireless Transfer LED

The wireless transfer LED (XX) is located on the side of the camera (inside the antenna). The camera is searching for profiles when the LED blinks, a wireless connection is established when the LED is lit, and the camera is disconnected from a wireless LAN when the LED is off. If transfer is not performed for a while, the LED may blink to save power.

### Note on Wireless Transfer Mode

The camera strap eyelet may become hot during wireless communication (i.e., when the wireless transfer LED is lit or is blinking). Observe due caution when handling the camera.

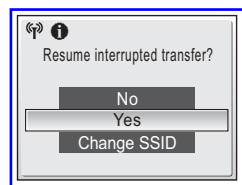
### The Memory Card Write-Protect Switch

When the memory card write-protect switch is in the "lock" position, transfer cannot be performed. Unlock by sliding the switch to the "write" position before transferring pictures.

### When the Transfer is Unsuccessful

When transfer is unsuccessful, the next time you attempt transfer, the confirmation dialog shown at right will be displayed. If necessary, you can change profiles from the confirmation dialog. Complete transfer, making sure that it was successful.

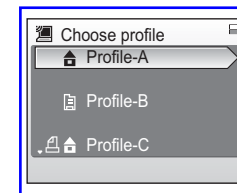
This confirmation dialog will not be displayed when Picture Bank is set to upload pictures to the COOLPIX CONNECT server as the battery is charged.



## Establishing a Wireless Connection

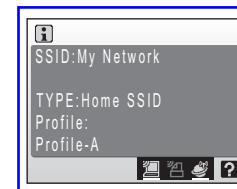
### Selecting a Computer or Printer

When the selected SSID has multiple computers or printers registered, the screen shown at right will be displayed after selecting the desired SSID. Select the desired computer or printer.



### Checking SSID Contents

Pressing T in the SSID selection screen displays the information for the selected profile including the network name (SSID), type of computer and printer.



### Message Displayed During Transfer


The message shown at right is displayed in the monitor during picture transfer. The antenna icon in the top left corner of the monitor indicates signal strength (5-levels). The icon changes to red when outside the network area. When signal strength is poor, remove any obstacles between the camera antenna and computer (or access point). To cancel the current transfer, press OK.

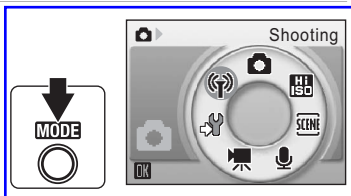


### Managing Profile Devices

You can configure a maximum of nine profile devices (computers, printers connected to a computer, etc.) in the camera. If nine have already been configured and you want to add a new one, delete an unneeded profile device using the Setup Utility.

## Immediately Transferring Pictures Taken - Shoot & Transfer

- 1 Press **MODE** to display the shooting-mode selection menu, use the rotary multi selector to select , and then press **OK**.



- 2 Choose the desired SSID and press **OK**.

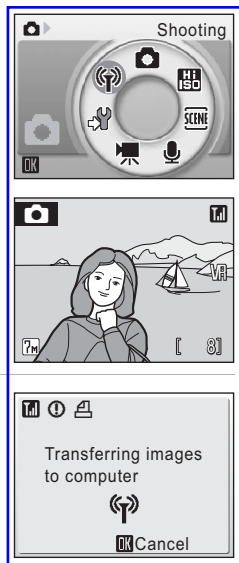
For information on selecting an SSID, see "Establishing a Wireless Connection" (147).

When multiple computers are set as profiles for the infrastructure network, the profile selection screen is displayed. Choose a profile and press **OK**.

- 3 Select the desired shooting mode and press **OK**.

[Shoot & transfer] is not available in movie mode or voice recording mode.

[Shoot & transfer] is not available at a [Continuous] setting of [Continuous] or [Invl timer shooting], or in [Sports] scene mode.



- 4 Take a picture.


The just-taken picture will be transferred to the computer. The camera returns to shooting mode (screen in step 3) after transfer is complete. Note that pictures cannot be taken while pictures are being transferred.

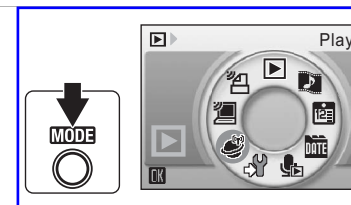
- If the confirm transfer screen (142) is displayed, select [Yes] to transfer the picture. To cancel the transfer, select [No].

## Uploading Pictures to COOLPIX CONNECT

Follow the procedure described below to upload pictures to Picture Bank using COOLPIX CONNECT.

This section describes upload of selected pictures to Picture Bank. Automatic upload of pictures not yet uploaded to Picture Bank is also possible (142).

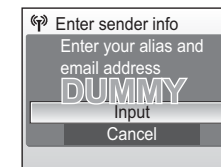
- 1 Press **MODE** in playback mode, use the rotary multi selector to choose , and then press **OK** to enter COOLPIX CONNECT mode.



If a password has been applied, enter the password and press the shutter-release button.

- 2 Enter your e-mail address correctly.

Choose [Input] in the sender information entry screen and press **OK**.



Enter your e-mail correctly in the address screen and press the shutter-release button. Then enter your (sender) name for e-mail notification to recipients and press the shutter-release button. For information on how to enter text, see "Entering Text with the Camera" (142).



- 3 Select [Picture Mail] or [Picture Bank], and press **OK**.

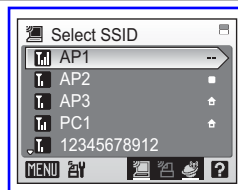
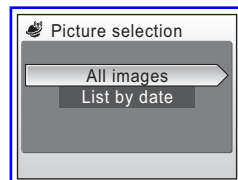
[Choose service]  
Screen  
T.B.D.

## Uploading Pictures to COOLPIX CONNECT

**4 Choose the desired SSID and press  $\odot$ .**

Connection is attempted with the selected SSID. When the connection is established, the picture selection screen will be displayed.

- For information on selecting an SSID, see “Establishing a Wireless Connection” (147).

**5 Choose [All images] or [List by date] and press  $\odot$ .**

When [All images] is selected, rotate the rotary multi selector to highlight pictures and press the rotary multi selector  $\blacktriangle$  to select a desired picture (up to 30). A check mark ( $\checkmark$ ) will be applied to selected pictures. Press the rotary multi selector  $\blacktriangledown$  to cancel a selection. Press  $\odot$  to finalize picture selection.

Press **T** (Q) to switch to full-frame playback.

Press **W** (E) to switch back to thumbnail display.

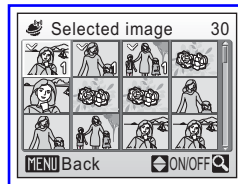
When [List by date] is selected, rotate the rotary multi selector to highlight a shooting date and press  $\odot$  to select the date ( $\checkmark$ ). Press  $\odot$  again to cancel the selection. Multiple dates can be selected.

Press the shutter-release button to finalize date selection.

When pictures taken on the selected date are displayed, rotate the rotary multi selector to highlight pictures and press the rotary multi selector  $\blacktriangle$  to select a desired picture (up to 30). A check mark ( $\checkmark$ ) will be applied to selected pictures. Press the rotary multi selector  $\blacktriangledown$  to cancel a selection. Press  $\odot$  to finalize picture selection.

When [Picture Mail] is selected in the choose service screen, proceed to step 6.

When [Picture Bank] is selected in the choose service screen, proceed to step 8.

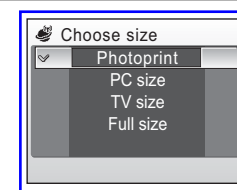


## Uploading Pictures to COOLPIX CONNECT

**6 Choose the size for the pictures to be transferred and press  $\odot$ .**

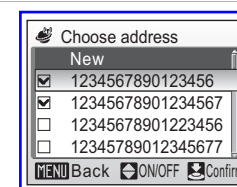
When [Picture Mail] is selected in the choose service screen, proceed to step 7.

Photoprint	1,600 × 1,200 pixels
PC size	1,024 × 768 pixels
TV size	640 × 480 pixels
Full size	The same size as the original

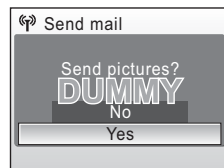
**7 Choose recipient nicknames (e-mail addresses) and press the shutter-release button.**

When pictures are uploaded to the COOLPIX CONNECT server, e-mail notification will be sent to the selected recipient addresses (up to 30) via e-mail.

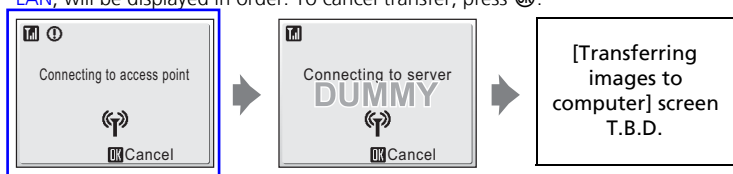
- Press the rotary multi selector  $\blacktriangle$  or  $\blacktriangledown$  to highlight a recipient's address and press  $\odot$  to apply the selected address.
- To add a recipient, select [New], press  $\odot$ , and enter the recipient's e-mail address and a nickname. Up to 64 single-byte alphanumeric characters can be entered for e-mail addresses, up to 16 for nicknames. Once selection has been made, press the shutter-release button to return to the choose address screen.
- After e-mail addresses have been selected, press **T** (Q) to preview the information registered in the address information screen. Press **T** (Q) again to return to the choose address screen.



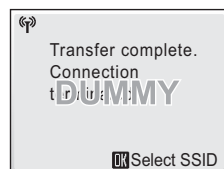
## Uploading Pictures to COOLPIX CONNECT

**8** Choose [Yes] and press **OK**.

The screens for connecting to the access point, to the server, and to the wireless LAN, will be displayed in order. To cancel transfer, press **OK**.



When the transfer is complete, the message shown at right will be displayed.

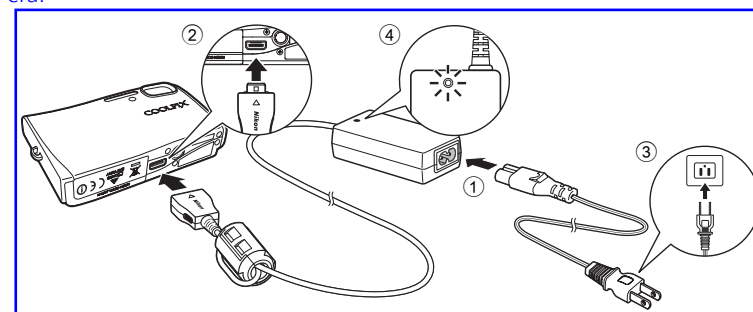
**Deleting Recipient E-mail Addresses**

To delete recipient e-mail addresses, select the nicknames (e-mail addresses) to be deleted in step 7 and press **W**. Select [Yes] in the confirmation dialog, and press **OK** to delete those selected.

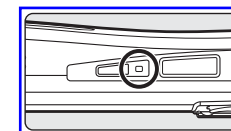
## Uploading Pictures to COOLPIX CONNECT

**Upload Pictures to Picture Bank Automatically**

By default, the camera automatically uploads pictures that have not yet been uploaded to Picture Bank whenever the AC adapter is connected to the camera.

**1** Connect the power cable and AC adapter (①).**2** Turn the camera off.

If the power-on lamp is lit, press the power switch to turn off the camera. **You cannot upload pictures to Picture Bank while the camera is turned on.**

**3** Connect the AC adapter to the camera's multi connector (②).

The multi connector should be fully inserted.

**4** Plug the power cable into an outlet (③).

When the AC adapter is connected correctly, the power-on lamp will light. (④) When the camera is turned on and the start Picture Bank screen is displayed, Picture Bank begins uploading pictures.

To cancel picture upload, press **OK** when the message, "Start Picture Bank," "Searching for SSID," or "Connecting to access point," is displayed.

Once upload is complete, the battery will begin charging.


When the camera is turned off after picture upload, the "Transfer completed." message will be displayed in the monitor the next time the camera is turned on.

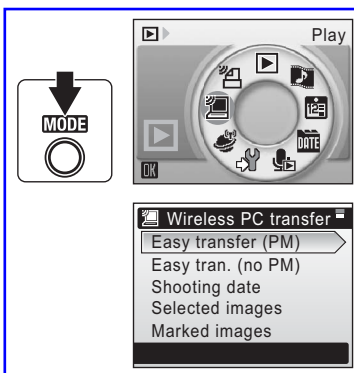
If the "Transfer terminated." message is displayed, pictures may not have been successfully uploaded. Enter COOLPIX CONNECT mode from the playback-mode selection menu to try uploading pictures again.

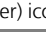

**Modifying the Automatic Upload Setting**

Choose [off] from the camera's setup menu > [Wireless settings] > [Picture Bank] (XX).

## Transferring Pictures to a Computer (PC Connection)

To display the playback-mode selection menu, press **MODE** in playback mode. To display the wireless PC transfer screen, use the rotary multi selector to choose  and then press **OK**. The following transfer options are available for transferring pictures to a computer.



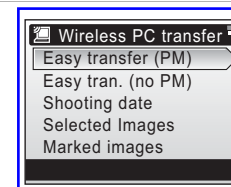
Function selection menu	Description
Easy transfer (PM)	Transfer pictures and Pictmotion movies not yet saved in the computer. Pictmotion movies take time to transfer and cannot be transferred to a Macintosh.
Easy trans. (no PM)	Transfer pictures not yet saved in the computer. Pictmotion movies cannot be transferred.
Shooting date	Transfer all pictures taken on a specific shooting date.
Selected images	Transfer only selected pictures.
Marked images	Transfer pictures marked with a  (transfer) icon (  XX).
PC mode	Transfer pictures to a profile device using a computer.

Wireless Transfer Mode

## Transferring Pictures to a Computer (PC Connection)

### Transferring Pictures Not Yet Saved on a Computer - Easy Transfer

**1** Choose [Easy transfer (PM)] or [Easy trans. (no PM)] in the wireless PC transfer screen and press **OK**.



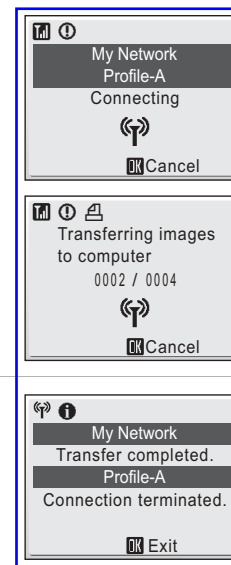
**2** Choose the desired SSID and press **OK**.

For information on selecting an SSID, see "Establishing a Wireless Connection" (147).

When multiple computer profiles have been created for a single SSID, the profile selection screen will be displayed. Choose a profile and press **OK**.

**3** Picture transfer begins.

Pictures not yet saved on the computer will be transferred after the camera and computer are connected.



**4** When transfer is complete, press **OK** to return to the playback-mode selection menu.

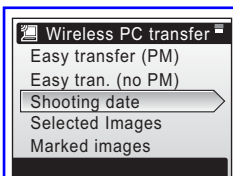
Wireless Transfer Mode

## Transferring Pictures to a Computer (PC Connection)

## Transferring Pictures Taken on Selected Date - Shooting Date

- 1** Choose [Shooting date] in the wireless PC transfer screen and press **OK**.

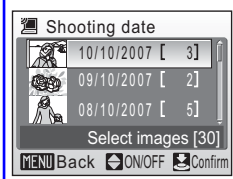
The shooting date menu will be displayed.



- 2** Rotate the rotary multi selector to highlight a shooting date, press **OK** to select the date (✓), and then press the shutter-release button.

To cancel a selected date, highlight the date and press **OK** again.

Multiple dates can be selected.

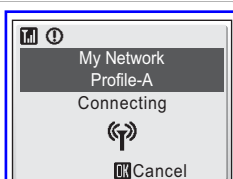


- 3** Choose the desired SSID and press **OK**.

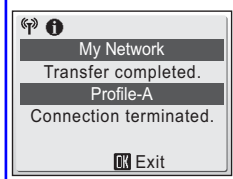
For information on selecting an SSID, see "Establishing a Wireless Connection" (147).

When multiple computer profiles have been created for a single SSID, the profile selection screen will be displayed. Choose a profile and press **OK**.

- 4** Picture transfer begins.



- 5** When transfer is complete, press **OK** to return to the playback-mode selection menu.



**Note on Transferring Pictures with [Shooting date]**

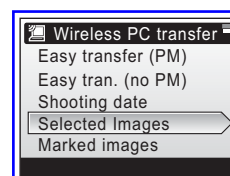
Pictures taken without the date and time set (XX XX) cannot be chosen for transfer with [Shooting date].

## Transferring Pictures to a Computer (PC Connection)

## Transferring Selected Pictures - Selected Images

- 1** Choose [Selected images] in the wireless PC transfer screen and press **OK**.

The selected images menu will be displayed.



- 2** Rotate the rotary multi selector to highlight the pictures, and press the rotary multi selector **▲** or **▼** to select pictures (✓), and then press **OK** to finalize picture selection.

- Press the rotary multi selector **▲▼** to apply selection or cancel the selection. Multiple pictures can be selected.

- Press **OK** to complete selection.

Press **T** (Q) to switch to full-frame playback.

Press **W** (E) to switch back to thumbnail display.



- 3** Choose the desired SSID and press **OK**.

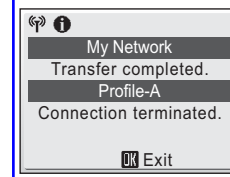
For information on selecting an SSID, see "Establishing a Wireless Connection" (147).

When multiple computer profiles have been created for a single SSID, the profile selection screen will be displayed. Choose a profile and press **OK**.

- 4** Picture transfer begins.



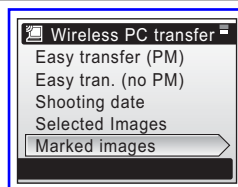
- 5** When transfer is complete, press **OK** to return to the playback-mode selection menu.



## Transferring Pictures to a Computer (PC Connection)

## Transferring Pictures Marked for Transfer - Marked Images

- 1 Choose [Marked images] in the wireless PC transfer screen and press **OK**.



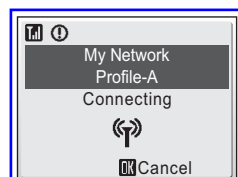
- 2 Choose the desired SSID and press **OK**.

For information on selecting an SSID, see "Establishing a Wireless Connection" (147).

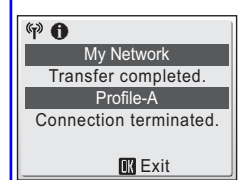
When multiple computer profiles have been created for a single SSID, the profile selection screen will be displayed. Choose a profile and press **OK**.

- 3 Picture transfer begins.

Pictures marked with the  (transfer) icon (147) will be transferred.



- 4 When transfer is complete, press **OK** to return to the playback-mode selection menu.

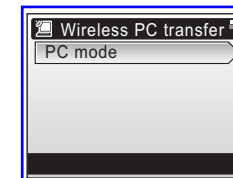


Wireless Transfer Mode

## Transferring Pictures to a Computer (PC Connection)

## Transferring Pictures Using a Computer - PC Mode

- 1 Choose [PC mode] in the wireless PC transfer screen and press **OK**.



- 2 Choose the desired SSID and press **OK**.

For information on selecting an SSID, see "Establishing a Wireless Connection" (147).


When multiple computer profiles have been created for a single SSID, the profile selection screen will be displayed. Choose a profile and press **OK**.

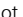

- 3 The camera and computer are connected.

The camera and computer will be connected.

- When the selected computer has PictureProject installed, it will be launched automatically. To transfer pictures, click the [Transfer] button in PictureProject Transfer. See the *PictureProject Reference Manual* (on CD) for details.
- When the selected computer does not have PictureProject installed, drag and drop pictures from the camera displayed on the computer.
- Pictmotion movies can be transferred (Windows only).



**Note on the Camera's  Button**

Pictures marked with the  icon cannot be transferred in wireless transfer mode using the camera's  button.


**Save Location of Transferred Images**

- Pictures transferred to the computer are saved to the following location.
  - Windows XP: [Wireless Transfer] folder in [My Pictures] folder
  - Macintosh: [Wireless Transfer] folder in [Picture] folder
- A destination folder can be changed using the Setup Utility. Choose [Select destination folder] in the screen in step 6 (131) and choose a destination folder. Connection between the camera and a computer is not necessary for this operation.
- When pictures are transferred over a wireless connection to a computer that has PictureProject installed, in modes other than [PC mode], PictureProject automatically starts and the transferred pictures will be displayed. Note that the save location can be changed.
- For computers without PictureProject installed, Explorer (for Windows) or Finder (for Macintosh) starts and the save location will be displayed. Note that the save location cannot be changed.
- If the camera is connected to a computer in [PC mode] without PictureProject installed, drag and drop pictures from the camera icon or drive displayed on the computer to the desired save location.

Wireless Transfer Mode

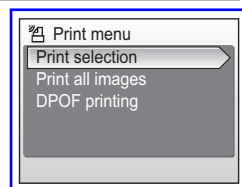
## Transferring Pictures to a Computer (PC Connection)

## Printing Pictures (Wireless Printing)

To display the playback-mode selection menu, press **MODE** in playback mode. To display the wireless printing screen, use the rotary multi selector to choose  and then press **OK**.



- 1 Choose [Print selection], [Print all images] or [DPOF printing] and press **OK**.


**Print selection**

Select pictures and specify the number of prints for each picture. Proceed to step 2.

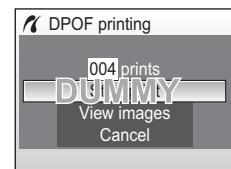
**Print all images**

All pictures stored in the internal memory or memory card are printed. Proceed to step 4.

**DPOF printing**

Print pictures for which a print order has been created in [Print set] ( XX).

- The menu shown at right will be displayed.
- To print, choose [Start print] and press **OK**. Proceed to step 4.
- To view the current print order, choose [View images] and press **OK**. Proceed to step 3.



## Transferring Pictures to a Computer (PC Connection)

- 2 Choose the pictures and number of copies (up to 9) of each and press **OK**.

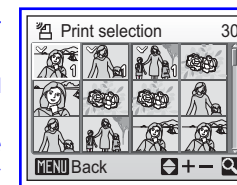
Rotate the rotary multi selector to select pictures and **▲▼** to set the number of copies for each.

Pictures selected for printing can be recognized by the check mark (**✓**) and the numeral indicating the number of copies to be printed. A check mark is not displayed with pictures for which 0 copies have been specified and these pictures will not be printed.

Press **OK** when setting is complete.

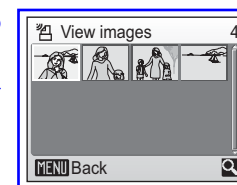
Press **T** () to switch to full-frame playback.

Press **W** () to switch back to thumbnail display.





- 3 Check the selected pictures you wish to print and press **OK**.

To modify selection, press **MENU** to return to the previous screen.



- 4 Choose the SSID and press **OK**.

- For information on selecting an SSID, see "Establishing a Wireless Connection" ( 147).
- When multiple computer profiles have been created for a single SSID, the profile selection screen will be displayed. Choose a profile and press **OK**.
- When [On] is selected for [Wireless settings] > [Show page size options] in the camera's setup menu ( XX), the paper size screen will be displayed. Choose a paper size and press **OK**. Choose [Default] to print pictures at the printer's default paper size.

- 5 Printing begins.

- When printing is complete, the playback-mode selection menu will be displayed.
- To terminate printing once it has begun, press **OK**.



 **Switching the Printer**

When using multiple printers, the printer can be switched by using the Setup Utility. Start the Setup Utility and choose [Select printer] in the action selection screen. Connecting the computer and camera is not necessary for switching the printer.






Error Messages

Wireless Transfer Mode

Display	Problem	Solution	
Transfer error	Error during image transfer.	Check signal strength. Move the camera closer to the profile device or remove obstruction between the camera and device.	–
Profile not registered. Set up profile.	No profile devices are configured for wireless transfer.	Use Wireless Camera Setup Utility, or [Wireless setting] item in setup menu, to configure device profiles.	XX, XX
Battery exhausted. Transfer terminated.	Battery exhausted during image transfer.	Use the AC Adapter EH-64, or charge the battery, turn the camera on again, and apply the last mode used for image transfer.	XX
SSID not found	SSID was not detected.	Check signal strength. Move the camera closer to the profile device or remove any obstructions between the camera and device. Select [Try again] and press  .	–
Failed to connect to (SSID/profile device)	Selected profile cannot be used.	<ul style="list-style-type: none"> <li>• Camera's IP address may be incorrect. Use Wireless Camera Setup Utility, or [Wireless setting] item in setup menu, to apply settings again.</li> <li>• Change firewall settings.</li> </ul>	XX, XX
Connection error.	Wireless connection to the profile was terminated.	Check signal strength. Move the camera closer to the profile device or remove obstruction between the camera and device.	–




Technical Notes

Error Messages

Display	Problem	Solution	
User information incorrect.	Camera is not certified to connect to the wireless network.	Start Wireless Camera Setup Utility, connect camera and computer, and reconfigure to connect to the network.	XX, XX
Mailbox is full.	Picture Bank is full.	Delete unnecessary pictures.	–
Service not available.	Cannot use COOLPIX CONNECT network service.	Start Wireless Camera Setup Utility, connect camera and computer, and reconfigure to connect to the network.	XX
Address incorrect.	An error occurred with recipient e-mail address using COOLPIX CONNECT.	Use Wireless Camera Setup Utility, or [Wireless setting] item in setup menu to confirm recipient e-mail address and correct if necessary.	XX
Login failed.	Login error occurred when connecting to COOLPIX CONNECT.	Select [Re-enter] and press  to re-enter user name and password. Choose [Select SSID] and press  to select SSID again.	XX

Technical Notes



## Troubleshooting

Problem	Cause/Solution	
Custom Pictmotion background music tracks are not listed	Memory card contains no background tracks. If background tracks were deleted when memory card was formatted, copy tracks to card again.	62
Pictures not displayed on television	Choose correct video mode.	120
PictureProject does not start when camera is connected	<ul style="list-style-type: none"> <li>• Camera is off.</li> <li>• Battery is exhausted.</li> <li>• AV/USB cable is not correctly connected.</li> <li>• Appropriate [USB] option is not selected.</li> <li>• Camera is not recognized by the computer.</li> <li>• Computer is not set to launch PictureProject automatically.</li> </ul> See the supplied <i>PictureProject Reference Manual</i> (on CD) (silver) for more information on PictureProject.	22 22 77 78 – –
Cannot mark pictures for transfer	No more than 1,000 pictures can be marked for transfer. Use the [Transfer] button in PictureProject to transfer pictures.	79
Transfer marking does not appear	Pictures were marked for transfer using another model of camera. Mark pictures for transfer using COOLPIX S50c.	80, 105
Cannot transfer pictures	 cannot be used to transfer pictures from internal memory when [Mass storage] is selected for [USB] or if memory card is locked. Transfer pictures using the [Transfer] button in PictureProject.	21
Cannot transfer Pictmotion movies	<ul style="list-style-type: none"> <li>• Pictmotion movies cannot be transferred to Mac OS.</li> <li>•  cannot be used to transfer Pictmotion movies. Use the [Transfer] button in PictureProject.</li> </ul>	– –

Technical Notes

## Troubleshooting

### Wireless Transfer

Problem	Cause/Solution	
The camera is not detected by the Wireless Camera Setup Utility.	<ul style="list-style-type: none"> <li>• Set the camera to  (auto) mode.</li> <li>• Select [PTP] for [Interface] &gt; [USB] in the setup menu.</li> </ul>	XX, XX
SSID is not displayed.	<ul style="list-style-type: none"> <li>• Configure a profile device.</li> <li>• SSID is set to hide.</li> <li>• Signal strength is poor.</li> <li>• Move the camera closer to the access point or computer.</li> <li>• Remove obstruction between the camera and profile device.</li> <li>• Adjust the direction of the camera so it can receive a better signal.</li> </ul>	XXX
Connection to the access point or server failed.	<ul style="list-style-type: none"> <li>• A profile for home wireless LAN is set in the procedure for public wireless LAN.</li> <li>• Connect the computer and camera and start the Wireless Camera Setup Utility. Then choose the action [Rename/Delete profiles], choose the profile from the list, and click [View Profile] to confirm the information.</li> </ul>	XXX
Wireless transfer was terminated during image transfer, and transfer failed.	<ul style="list-style-type: none"> <li>• Turn the camera off and on again, and try again.</li> <li>• Battery is running out.</li> </ul>	XX, XX
Pictmotion movies were not wirelessly transferred.	<ul style="list-style-type: none"> <li>• [Easy Trans. (no PM)] is selected in wireless PC transfer menu.</li> <li>• Pictmotion movies cannot be transferred from a Macintosh.</li> </ul>	XX

Technical Notes

## Supported Standards

- **DCF:** Design Rule for Camera File System is a standard widely used in the digital camera industry to ensure compatibility among different makes of camera.
- **DPOF:** Digital Print Order Format is an industry-wide standard that allows pictures to be printed from print orders stored on the memory card.
- **Exif version 2.2:** This camera supports Exif (Exchangeable Image File Format for Digital Still Cameras) version 2.2, a standard that allows information stored with photographs to be used for optimal color reproduction when images are output from Exif-compliant printers.
- **PictBridge:** A standard developed cooperatively by the digital camera and printer industries, allowing photographs to be output directly to a printer without connecting the camera to a computer.
- **ImageLink:** The ImageLink standard allows pictures taken with a digital camera to be printed directly on a household printer, without using a computer. The camera can be connected directly to any ImageLink-compatible printer for one-touch picture printing.

## Specifications

### Nikon COOLPIX S50c Digital Camera

Type	Compact digital camera
Effective pixels	7.2 million
CCD	<sup>1</sup> / <sub>2</sub> .5-in. CCD
Total pixels	7.41 million
Image size (pixels)	<ul style="list-style-type: none"> <li>• 3,072 × 2,304 [High (3072★)/Normal (3072)]</li> <li>• 2,592 × 1,944 [Normal (2592)]</li> <li>• 2,048 × 1,536 [Normal (2048)]</li> <li>• 1,024 × 768 [PC screen (1024)]</li> <li>• 640 × 480 [TV screen (640)]</li> <li>• 3,072 × 1,728 (16:9)</li> </ul>
Lens	3× Zoom-Nikkor lens
Focal length	6.3-18.9mm (equivalent with 35mm [135] format picture angle: 38-114mm)
f/-number	f/3.3-4.2
Construction	12 elements in nine groups
Digital zoom	Up to 4x (equivalent with 35mm [135] format picture angle: approx. 456mm)
Autofocus (AF)	Contrast-detect AF
Focus range (from lens)	<ul style="list-style-type: none"> <li>• 30 cm (1 ft.) to ∞</li> <li>• Macro close-up mode: 4 cm (1.6 in.) to ∞ (wide zoom position)</li> </ul>
Focus-area selection	Auto (five-area automatic selection), center, manual (99 focus area)
AF-assist illumination	Class 1 LED product (IEC 60825-1 Edition 1.2-2001); max. output: 1,600 μW
Vibration reduction	Optional
Monitor	3.0 in., 230,000-dot, wide viewing-angle low-temperature polysilicon TFT LCD with anti-reflection coating and 5-level brightness adjustment
Frame coverage (shooting mode)	Approx. 97% horizontal and 97% vertical
Frame coverage (playback mode)	Approx. 100% horizontal and 100% vertical
Storage	
Media	Internal memory (20 MB) Secure Digital (SD) memory cards
File system	DCF, Exif 2.2, and DPOF compliant
File formats	Compressed: JPEG-Baseline-compliant Movies: QuickTime Audio files: WAV

## Specifications

<b>Exposure</b>	
Metering	Matrix, center-weighted (digital zoom)
Exposure control	Programmed auto exposure with exposure compensation (-2.0 to +2.0 EV in steps of 1/3 EV)
Range	W: -0.2 to +16.4 EV T: +0.5 to +17.1 EV
<b>Shutter</b>	
Speed	4-1/2000 s
<b>Aperture</b>	
Range	2 steps (f/3.3 and f/6.6 [W])
ISO sensitivity (Standard output sensitivity)	ISO 100, 200, 400, 800, 1600, Auto (auto gain to ISO 100-800)
Self-timer	10 seconds, 3 seconds
<b>Built-in flash</b>	
Range	W: 0.3 to 3.5 m / 12 in. to 11 ft. 4 in. T: 0.3 to 3.0 m / 12 in. to 9 ft. 8 in.
Flash control	Sensor flash system
Interface	Hi-Speed USB (2.0)
Video output	Can be selected from NTSC and PAL
I/O terminal	Multi connector (supports ImageLink)
<b>Wireless</b>	
Standards	IEEE 802.11b/g (standard wireless LAN protocol), ARIB STD-T66 (standard for low power data communications systems)
Communications protocols	IEEE 802.11g: OFDM IEEE 802.11b: DBPSK, DQPSK, CCK
Range (line of sight)	Approximately 30 m/98.4 ft. (varies with location)
Operating frequency	2412-2462 MHz (11 channels)
Data rates*	IEEE 802.11g: 6, 9, 12, 18, 24, 36, 48, and 54 Mbps IEEE 802.11b: 1, 2, 5.5, and 11 Mbps
Security	TKIP, 128/64-bit (104/40-bit) WEP, AES
Access protocols	Infrastructure/ad-hoc
Supported languages	Czech, Danish, German, English, Spanish, French, Indonesian, Italian, Dutch, Norwegian, Polish, Portuguese, Russian, Finnish, Swedish, Chinese (Simplified and Traditional), Japanese, Korean, Thai
Power sources	<ul style="list-style-type: none"> <li>Rechargeable Li-ion Battery EN-EL8 (supplied)</li> <li>AC Adapter EH-64 (supplied)</li> </ul>
Battery life*	Approx. 130 shots with EN-EL8

Technical Notes

## Specifications

<b>Dimensions (W x H x D)</b>	Approx. 97.3 x 59.2 x 21.2 mm/3.8 x 2.3 x 0.8 in.
<b>Weight</b>	Approx. 125 g (4.4 oz) without battery and memory card
<b>Operating environment</b>	
Temperature	0 to +40 °C (+32 to 104 °F)
Humidity	Less than 85% (no condensation)

\* Based on Camera and Imaging Products Association (CIPA) standards for measuring the life of camera batteries. Measured at 25 °C (77 °F); zoom adjusted with each shot, flash fired with every other shot, image mode set to [Normal (3072)]. Battery life may vary depending on shooting interval and length of time menus and images being displayed.

- Unless otherwise stated, all figures are for a camera with a fully-charged Rechargeable Li-ion Battery EN-EL8 operated at an ambient temperature of 25 °C (77 °F).

Technical Notes

## Specifications

### PV-12 Dock Insert

<b>Dimensions (W x H x D)</b>	Approx. 135.5 x 17.5 x 63 mm/5.3 x 0.6 x 2.5 in. (excluding projections)
<b>Weight</b>	Approx. 28 g (0.9 oz)

### AC Adapter EH-64

<b>Rated input</b>	100–240 V AC, 50/60 Hz, 0.18–0.1 A
<b>Rated capacity</b>	18–22 VA
<b>Rated output</b>	DC 4.8 V/1.5 A
<b>Operating temperature</b>	0 to +40 °C (+32 to 104 °F)
<b>Dimensions (W x H x D)</b>	Approx. 41 x 23.5 x 79 mm /1.6 x 0.9 x 3.1 in. (excluding projections)
<b>Length of cable</b>	Approx. 1.7 m (5 ft. 7 in.)
<b>Weight</b>	Approx. 110 g (3.9 oz), excluding power cable

### Rechargeable Li-ion Battery EN-EL8

<b>Type</b>	Rechargeable lithium-ion battery
<b>Rated capacity</b>	3.7 V/730 mAh
<b>Operating temperature</b>	0 to +40 °C (+32 to 104 °F)
<b>Dimensions (W x H x D)</b>	Approx. 35 x 47 x 5 mm/1.4 x 1.9 x 0.2 in. (excluding projections)
<b>Weight</b>	Approx. 17 g (0.6 oz), excluding terminal cover

### Specifications

Nikon will not be held liable for any errors this manual may contain. The appearance of this product and its specifications are subject to change without notice.

## Index

### Symbols

(anti-shake) button 6, 44  
 Anti-shake mode 44  
 (apply selection) button 7  
 Auto mode 22–29  
 Calendar mode 55  
 (delete) button 11, 28, 49  
 (D-Lighting) 52  
 (exposure compensation) 7, 34  
 Help 13  
 High-sensitivity shooting mode 35  
 List by date mode 56  
**MENU** button 11  
**MODE** (mode) button 7, 10  
 Movie mode 10, 11, 65, 66  
 (one-touch portrait/D-Lighting) button 6, 45, 52  
 Pictmotion mode 60  
 Playback mode 10, 11, 28, 29  
 Playback zoom 49, 51  
 Scene mode 11, 36  
 (shooting/playback) button 7, 10, 28  
 Thumbnail playback 47, 51  
 (transfer) button 77, 79, 105  
**VR** Vibration reduction 23, 116  
 Voice playback mode 73  
 Voice recording mode 10, 71, 108  
 Wait icon 170  
**W** and **T** (zoom) buttons 7, 24, 33, 70, 73, 83  
**A**  
 Accessories 164  
 Ad-hoc mode 125  
 AE-L 43  
 AF area mode 99  
 AF assist 117  
 Anti-shake mode 44  
 Auto off 118  
 Auto transfer 120

Auto-focus mode 69  
 AV/USB cable 76, 79, 82  
 AV-out connect 76  
**B**  
 Back light 41  
 Backlit subjects 30, 41  
 Battery 15  
 Battery charger 164  
 Battery level indicator 170  
 Battery-chamber/memory card slot cover 7  
 Beach/snow 38  
 Best shot selector 40, 97  
 Blur 177  
 Brightness 113  
 BSS 100  
**C**  
 Cable connector 79, 82  
 Cleaning  
     Body 169  
     Lens 169  
     Monitor 169  
 Close up 40  
 Close-up 33, 40  
 Color options 98, 100  
 Computer 76–80, 120  
     copying pictures to 76–79  
 Continuous 95, 100  
 COOLPIX CONNECT 124, 151  
 Copy 106  
 Copy 41  
 Crop 51  
 Cyanotype 98  
**D**  
 Date 18–19, 110, 114  
     printing 88  
 Date counter 115  
 Date imprint 114  
 Daylight saving time 110  
 DCF 182