

Quick Start Guide

Thank you for purchasing a Nikon digital camera. Should you need technical support, we offer a number of options available 24 hours a day, 7 days a week.

Internet
Please visit www.nikontechusa.com, Nikon's support home page. Here you can:
• Search Nikon's continuously updated Knowledge Database for the latest technical support information.
• Use "Ask Nikon a Question" to receive a prompt reply from a Nikon professional advisor to your e-mail.
• Download the latest versions of Nikon software or firmware updates for your product, or register to receive e-mail notification for software or firmware updates.

Telephone
Please call **1-800-NIKON-UX (1-800-645-6689)** for help, 24 hours a day, 7 days a week, for support and product questions. Our professional advisers are standing by to help with your digital camera needs.

Step 1 Take the Camera Out of the Box

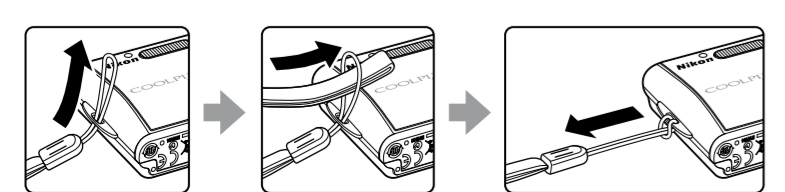
- a** Take the camera and all accessories out of the box.
- b** Check that you have all the items listed below.
- COOLPIX S202 Digital Camera
 - Camera Strap
 - Rechargeable Li-ion Battery EN-EL10* (with battery case)
 - Battery Charger MH-63 (with power cable)†
 - USB Cable UC-E6
- Quick Start Guide (this guide)
• User's Manual
• Warranty
• Software Suite installer CD

* Charge the battery as shown in step 3.
† Shape of power cable depends on country of use.

NOTE: Memory card not provided. See page 108 of the *User's Manual* for a list of approved memory cards.

AN IMPORTANT NOTICE ABOUT ACCESSORIES
Nikon COOLPIX digital camera is designed to the highest standards and includes complex electronic circuitry. Only Nikon accessories, such as chargers, batteries and AC adapters are certified by Nikon specifically for your Nikon COOLPIX camera and are engineered and tested to operate within the requirements of the electronic circuitry of our cameras.
THE USE OF NON-NIKON ACCESSORIES MAY DAMAGE YOUR CAMERA AND WILL VOID YOUR NIKON WARRANTY. The use of third-party rechargeable Li-ion batteries not bearing the Nikon holographic seal* could interfere with normal operation of the camera or result in the batteries overheating, igniting, rupturing, or leaking. Genuine Nikon accessories are available through your Nikon-authorized dealer or from our web site at www.Nikonmall.com.
* Holographic seal: Identifies this device as an authentic Nikon product.

Step 2 Attach the Camera Strap



Step 3 Charge the Battery

The camera uses a Rechargeable Li-ion Battery EN-EL10 (supplied). Charge the battery with the Battery Charger MH-63 (supplied) before first use or when the battery is running low.

- a** Connect the power cable to the battery charger ① and then plug it into a power outlet ②. The CHARGE lamp will light ③.
- b** Insert the battery at an angle as shown ①, and set it in the battery charger ②.
- c** The CHARGE lamp will start to blink. Charging is complete when the CHARGE lamp stops blinking. **A fully exhausted battery charges in about 100 minutes.**

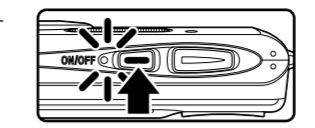
Step 4 Insert the Battery

- After charging the battery, insert it as described below.
- a** Open the battery-chamber/memory card slot cover.
- b** Insert the battery. Use the side of the battery to push aside the orange battery latch in the direction of the arrow ①, and fully insert the battery ②. The battery is fully inserted when the battery latch clicks back in place.
- c** Close the battery-chamber/memory card slot cover.

- Removing the Battery**
Turn the camera off before removing or inserting battery. To eject the battery, open the battery-chamber/memory card slot cover and slide the battery latch in the direction shown ①. The battery can then be removed by hand ②. Note that the battery may become hot during use; observe due caution when removing the battery.

Step 5 Turn On the Camera

Press the power switch to turn on the camera. The power-on lamp (green) will light and the monitor will turn on.



Step 6 Choose a Language and Set the Clock

A language-selection dialog is displayed the first time the camera is turned on. Follow the steps below to choose a language and set the time and date.

The Multi Selector
Use the multi selector to choose and apply settings.

Move cursor up.
Return to previous screen (move cursor left).
Go to next screen (move cursor right).
Apply selection.
Move cursor down.

In the descriptions that follow, parts of the multi selector that are used to perform a task are shown in gray.

- Choose the desired language.
- The date menu is displayed.
- Choose **Yes**.
- The time zone menu is displayed.
- The home time zone menu is displayed.
- Select your home time zone.
- The date menu is displayed.
- Edit the month.
- Press **OK**.
- Edit the day.
- Press **OK**.
- Choose the order in which the month, day, and year are displayed.
- The settings are applied and monitor display returns to shooting mode.

Daylight Saving Time
If daylight saving time is in effect, turn on **Daylight saving** (✓) in the time zone menu in step 4 and set the date.
1 Before pressing **OK** in step 4, press the multi selector down to choose **Daylight saving**.
2 Press **OK** to enable daylight saving time (✓). Pressing **OK** toggles the daylight saving time option on and off.
3 Press multi selector up to return to the time zone menu with the zone selected ("EST: New York" in step 4 above). Then, press **OK** to proceed to step 5.
When daylight saving time ends, turn **Daylight saving** off from the date menu in the setup menu. The camera's clock is automatically set back one hour. For more information on setting date and time, see page 94 of the *User's Manual*.

Step 7 Take Pictures

- a** Check the battery level and number of exposures remaining in the monitor.
- Battery level is shown in the monitor as follows.
- | Display | Description |
|-----------------------------|---|
| NO INDICATOR | Battery fully charged. |
| | Battery low. Prepare to charge or replace the battery. |
| Warning! Battery exhausted. | Cannot take pictures. Recharge or replace with a fully charged battery. |
- b** Frame your subject in the center of the monitor.
- The zoom buttons
Press **T** to zoom in on the subject so that it fills a larger area of the frame. Press **W** to zoom out, increasing the area visible in the frame.
- c** Press the shutter-release button halfway to confirm focus.
- When people's faces (front view) are recognized the camera will focus on the face surrounded by a double AF area.
When shooting non-human subjects or when no faces are recognized the camera automatically selects the focus area (one of nine) containing the subject closest to the camera.
With the shutter-release button pressed halfway, check the flash.
- | Flash lamp | On (red) | Flash will fire when picture is taken. |
|------------|------------|--|
| | Blinks red | Flash charging. |
| | Off | Flash off or not required. |
- If remaining battery level is low after using the flash to shoot, the monitor will turn off and the flash lamp will blink until the flash has finished charging.
- d** Press the shutter-release button the rest of the way down to shoot.
- The camera has a two-stage shutter-release button. Pressing the shutter-release button halfway focuses the camera. Pressing the rest of the way down releases the shutter to record a picture.

Step 8 View your Pictures

- a** Press **Q**.
- b** View pictures in the monitor.
- Use the multi selector to view other pictures. Press the multi selector right or down to view pictures in the order recorded, left or up to view pictures in reverse order.
- Deleting Pictures**
To delete the picture currently displayed in the monitor, press **DEL**. When a confirmation dialog is displayed, use the multi selector to choose **Yes** and press **OK**. To exit without deleting the picture, choose **No** and press **OK**.
- To switch to shooting mode, press **Q** or the shutter-release button.
- c** When you have finished taking pictures, turn the camera off.
- This completes the explanation how to use the COOLPIX S202. The next step is to install the provided software as described on the following page.

Windows Users

Nikon Transfer is supported by the following operating systems:

Preinstalled versions of Windows Vista (32-bit Home Basic/Home Premium/Business/Enterprise/Ultimate editions), Windows XP Service Pack 2 (Home Edition/Professional), Windows 2000 Professional* Service Pack 4

* If your computer is running Windows 2000 Professional, the COOLPIX S202 cannot be connected to the computer. Use a card reader or similar device to transfer pictures stored on the memory card to the computer.

Please visit www.nikonusa.com for the latest information on the supported operating systems.

Nikon Transfer can be used to copy (transfer) pictures to a computer for storage. Install Nikon Transfer from the supplied Software Suite CD. For further information, refer to the help information contained in the Software Suite CD or in Nikon Transfer.

Macintosh Users

Nikon Transfer is supported by the following operating systems and CPUs:

- Mac OS X (version 10.3.9, 10.4.11)
- PowerPC G4 or G5 model or Intel Core or Xeon (Universal Binary) model with built-in USB port required

Please visit www.nikonusa.com for the latest information on the supported operating systems.

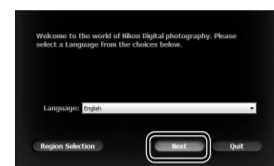
Nikon Transfer can be used to copy (transfer) pictures to a computer for storage. Install Nikon Transfer from the supplied Software Suite CD. For further information, refer to the help information contained in the Software Suite CD or in Nikon Transfer.

Install Software

When installing, using, or uninstalling Nikon Transfer, log on to an account with administrator privileges.

a Turn the computer on and insert the Software Suite CD into a CD-ROM drive (under Windows Vista, and choose **Run Welcome.exe** in the AutoPlay dialog). Exit all other applications and turn off any virus-checking software before beginning Nikon Transfer installation.

b The Language Selection dialog will be displayed. Confirm the language and click **Next**.



If the desired language is not displayed, click **Region Selection** to choose different region, and then choose the desired language. The Software Suite installer dialog will appear.

c The Install Center window shown at right will be displayed. Click **Nikon Standard Install** to install ArcSoft Panorama Maker software, Apple QuickTime, Nikon Transfer, and Microsoft DirectX 9 (Windows XP/2000 only). Note that there may be a delay between each installation; do not perform any other operations until all components are installed.



Custom Install: Install selected software.

Link to Nikon: Download trial versions of other Nikon software from a Nikon website or visit Nikon technical support websites (Internet connection required).

Install Guide: View help information included on the Software Suite CD.

If the Install Program Does Not Start Automatically

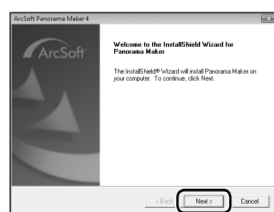
Open Computer by selecting **Computer** from the **Start** menu (Windows Vista), open My Computer by selecting **My Computer** from the **Start** menu (Windows XP), or double-click the **My Computer** icon on the desktop (Windows 2000 Professional), and double-click the **Software Suite** CD icon.

If Nikon Transfer Is Already Installed

The Language Selection dialog is not displayed if Nikon Transfer is already installed. The Install Center window is displayed in the language selected when Nikon Transfer was first installed.

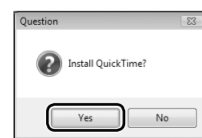
d ArcSoft Panorama Maker software

Follow the on-screen instructions to install Panorama Maker 4.



e Apple QuickTime

Click **Yes** to install QuickTime (installation may take several minutes on some systems).

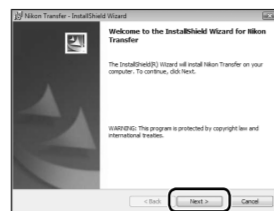


Installing QuickTime Under Windows Vista

See the Apple, Inc. website for Windows Vista support information. Nikon recommends downloading and installing the most up-to-date version of QuickTime for Windows Vista.

f Nikon Transfer

Click **Next** to begin installation of Nikon Transfer.



g The license agreement will be displayed. After taking the time to read and understand the contents of this agreement, select **I accept the terms in the license agreement** and click **Next** to accept its terms and display the ReadMe file. After reviewing the contents of this file, which may contain important information that could not be included here, click **Next**.

h The destination folder for Nikon Transfer will be displayed. Click **Next** to install Nikon Transfer to this folder, or click **Change...** to select another folder.

i Click **Install** to install Nikon Transfer to the selected folder.

j Click **Finish** to exit the Nikon Transfer installer.



Follow the on-screen instructions to close the Install Center window. If a dialog is displayed directing you to restart the computer, follow the on-screen instructions.

Microsoft DirectX 9 (Windows XP/2000 only)

If DirectX 9 is not already installed, a DirectX 9 installer dialog will be displayed. Follow the on-screen instructions to install DirectX 9.

k Remove the Software Suite CD from the CD-ROM drive. This completes installation.

Transfer Pictures to Your Computer

Use a Reliable Power Source

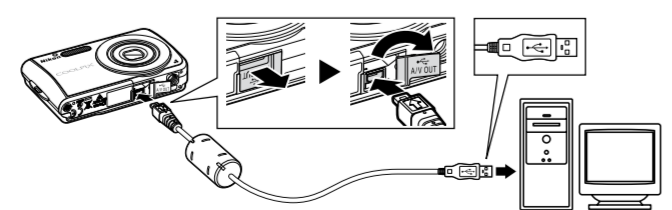
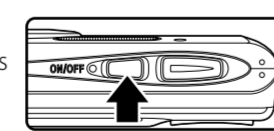
Nikon recommends using a fully charged battery to power the camera for extended periods.

If You Are Using Windows 2000 Professional

Use a card reader or similar device to transfer pictures stored on the memory card to the computer. For further information, refer to "For Users of Windows 2000 Professional."

a Turn off the camera. Connect

the camera to your computer as shown in the illustration, using the USB cable provided. Check to be sure the connector is in the correct orientation and insert the plug straight. Do not insert or disconnect it forcibly.



b Turn on the camera.

Windows Vista

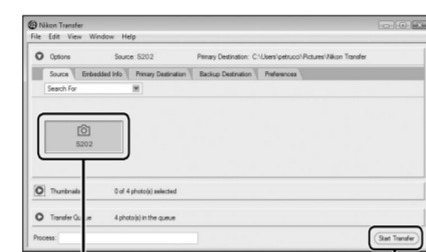
When the AutoPlay dialog is displayed, select **Copy pictures to a folder on my computer using Nikon Transfer**. To bypass this dialog in the future, check **Always do this for this device**. Nikon Transfer will start.



Windows XP

When the action selection dialog is displayed, select **Nikon Transfer Copy pictures to a folder on my computer**, and click **OK**. Nikon Transfer will start. To bypass this dialog in the future, check **Always use this program for this action**.

c Nikon Transfer will start. Confirm that the source device is displayed in the transfer options **Source** panel and click **Start Transfer**.



Source device Start Transfer button

d When transfer is complete, thumbnail images of the transferred pictures will be displayed in the Explorer window.



e After confirming that transfer is complete, turn the camera off and disconnect the USB cable. Pictures can be displayed in the viewer supplied with your operating system.

For Users of Windows 2000 Professional

Use a card reader or similar device to transfer the pictures stored on the memory card to the computer. If the memory card has a capacity greater than 2 GB, or is SDHC-compliant, the intended device must support these features of the memory card.

- At the Nikon Transfer default settings, Nikon Transfer will start automatically when a memory card is inserted into the card reader or similar device. See step c of "Transfer Pictures to Your Computer" to transfer pictures.
- Do not connect the camera to the computer. If the camera is connected to the computer, the **Found New Hardware Wizard** dialog will be displayed. Select **Cancel**, close the dialog, and disconnect the camera from the computer.
- To transfer pictures stored in the camera's internal memory to the computer, the pictures must first be copied to a memory card. For instructions on copying data between the internal memory and a memory card, see pages 86 and 90 of the *User's Manual*.

Install Software

When installing, using, or uninstalling Nikon Transfer, log on to an account with administrator privileges.

a Turn the computer on and insert the Software Suite CD into a CD-ROM drive. Exit all other applications and turn off any virus-checking software before beginning Nikon Transfer installation.

b The **Software Suite** folder opens automatically. Double-click the **Welcome** icon. If the folder does not open automatically, double-click the **Software Suite** CD icon on the desktop.

c Enter the administrator name and password and click **OK**.



d The Language Selection dialog will be displayed. Confirm the language and click **Next**.



If the desired language is not displayed, click **Region Selection** to choose different region, and then choose the desired language. The Software Suite installer dialog will appear.

e The Install Center window shown at right will be displayed. Click **Nikon Standard Install** to install ArcSoft Panorama Maker software and Nikon Transfer.



Custom Install: Install selected software.

Link to Nikon: Download trial versions of other Nikon software from a Nikon website or visit Nikon technical support websites (Internet connection required).

Install Guide: View help information included on the Software Suite CD.

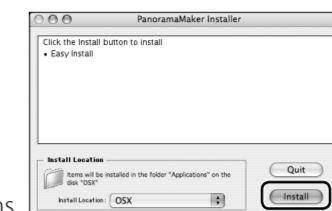
If Nikon Transfer Is Already Installed

The Language Selection dialog is not displayed if Nikon Transfer is already installed. The Install Center window is displayed in the language selected when Nikon Transfer was first installed.

f The ArcSoft license agreement will be displayed. After taking the time to read and understand the contents of this agreement, click **Accept** to accept its terms and proceed with installation.

g ArcSoft PanoramaMaker software

Click **Install** and follow the on-screen instructions to install Panorama Maker 4.



h The Nikon Transfer license agreement will be displayed. After taking the time to read and understand the contents of this agreement, click **Accept** to accept its terms and proceed with installation.

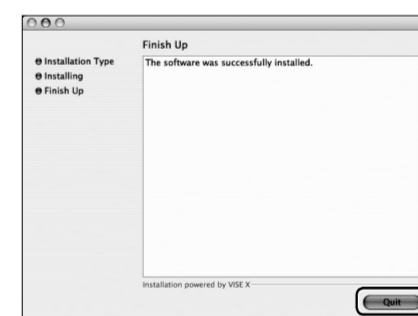
i Nikon Transfer

The Nikon Transfer installer will start. Click **Install** and follow the on-screen instructions to complete installation.

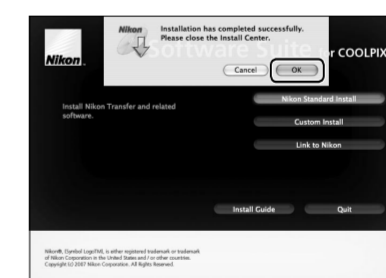


j When prompted, click **Yes** to have Nikon Transfer start automatically whenever the camera is connected. This setting can be changed after installation from the transfer options **Preference** panel.

k Click **Quit** to exit the Nikon Transfer installer.



l Click **OK** to close the Install Center window.



If a dialog is displayed directing you to restart the computer, follow the on-screen instructions.

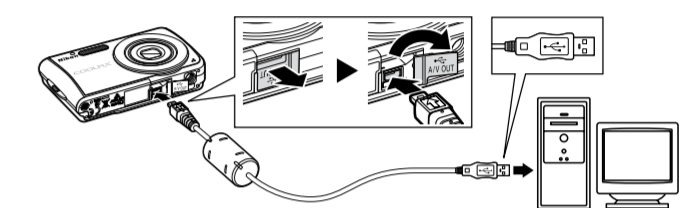
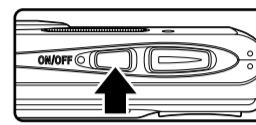
m Remove the Software Suite CD from the CD-ROM drive. This completes installation.

Transfer Pictures to Your Computer

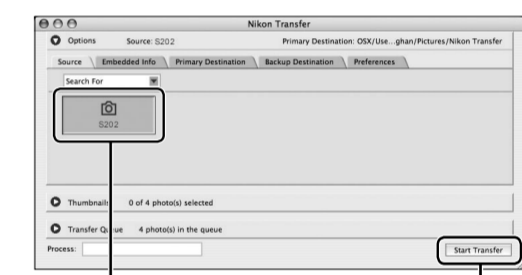
Use a Reliable Power Source

Nikon recommends using a fully charged battery to power the camera for extended periods.

a Turn off the camera. Connect the camera to your computer as shown in the illustration, using the USB cable provided. Check to be sure the connector is in the correct orientation and insert the plug straight. Do not insert or disconnect it forcibly.

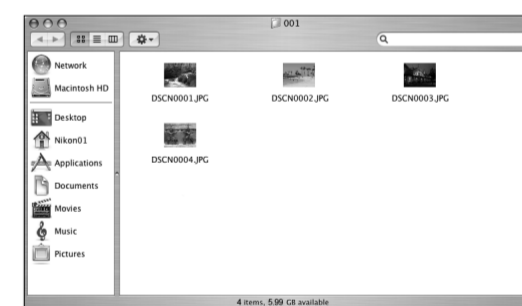


b Turn on the camera. Nikon Transfer will start automatically if **Yes** was selected in step j of "Install Software." Confirm that the source device is displayed in the transfer options **Source** panel and click **Start Transfer**.



Source device Start Transfer button

c When transfer is complete, thumbnail images of the transferred pictures will be displayed in the Finder window.



d After confirming that transfer is complete, turn the camera off and disconnect the USB cable. Pictures can be displayed in the viewer supplied with your operating system.