

Wireless Mobile Utility (Android) User's Manual

Install the Wireless Mobile Utility on your smart device (smartphone or tablet) to download pictures from a camera or take pictures remotely.

The Wireless Mobile Utility supports the following cameras. See the section for your camera for more information on using the Wireless Mobile Utility.

A

D610, D600, D7100, D5300, D5200, D3300, Df



[2-26](#)

B

D3200, COOLPIX A



[27-51](#)

C

Nikon 1 Cameras



[52-74](#)

D

*Other COOLPIX Cameras **



[75-99](#)

* Available only with models that feature built-in Wi-Fi or support the optional wireless mobile adapter. For information on supported COOLPIX cameras with built-in Wi-Fi, visit:

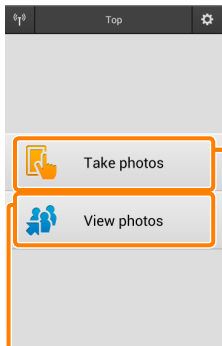
<https://play.google.com/store/apps/details?id=com.nikon.wu.wmau&hl=en>

Save where otherwise noted, the camera illustrations in this manual show the D3200.

This section describes the options available when the Wireless Mobile Utility is used to connect to D610, D600, D7100, D5300, D5200, D3300, and Df cameras.

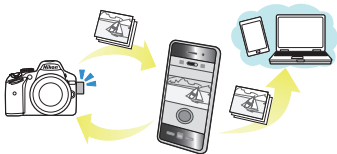
Features

Use the Wireless Mobile Utility to:



Take pictures remotely (📖 6): Tap the shutter icon in the Wireless Mobile Utility to take pictures and download them to the smart device.

Download pictures as they are taken (📖 9): Take pictures with the camera and save them to the smart device.



View pictures (📖 11): View the pictures stored on the smart device or the camera memory card.

Download pictures (📖 15): Download existing pictures from the camera memory card.

Share pictures (📖 18): Share pictures via e-mail or upload pictures to photo-sharing sites.

For information on establishing a connection, see page [4](#).

Notices

- No part of this manual may be reproduced, transmitted, transcribed, stored in a retrieval system, or translated into any language in any form without Nikon's prior written permission.
- Nikon reserves the right to change the specifications of the hardware and software described in this manual at any time and without prior notice. Nikon will not be held liable for damages that may result from any mistakes that this manual may contain.

System Requirements

Before installing the Wireless Mobile Utility, confirm that your smart device meets the following system requirements:

OS	<ul style="list-style-type: none">• Smartphone: Android 2.3 series, Android 4.x series• Tablet: Android 4.x series
Wireless LAN	11b/g/n
Screen resolution	800 × 480 pixels (WVGA) or higher

Using This Application for the First Time

You must accept the terms and conditions of the End User License Agreement (EULA) before connecting.

Installing the App

- 1 Locate the app on Google Play.**
Connect to Google Play on the smart device and search for “Wireless Mobile Utility”.
- 2 Install the app.**
Install the Wireless Mobile Utility.

Establishing a Wireless Connection

The following applies only to cameras without built-in Wi-Fi. For information on cameras with built-in Wi-Fi, see the manual provided with the camera.

- 1 Connect the wireless mobile adapter.**
Attach the wireless mobile adapter to the camera and turn the camera on. See the manual supplied with the wireless mobile adapter for details.
- 2 Ready the smart device.**
Select **Wi-Fi settings > WPS button connection**. The smart device will wait for a signal from the camera.
- 3 Press the WPS button.**
Press the WPS button on the wireless mobile adapter for about 5 s until the LED on the wireless mobile adapter flashes red and green.
- 4 Launch the Wireless Mobile Utility.**
When a connection is established, the LED on the wireless mobile adapter will glow green and the main dialog for the Wireless Mobile Utility will be displayed on the smart device. For information on taking pictures, see page [6](#). For information on viewing pictures, see page [11](#).

WPS



WPS (Wi-Fi Protected Setup) is a standard designed to make it easy to establish a secure wireless network. For information on the steps involved and the length of time the smart device will wait for a connection, see the documentation supplied with the smart device.

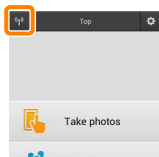
Manual Wireless Connections

- 1 Display Wi-Fi settings for the smart device.
- 2 Select the appropriate SSID (the default SSID begins with "Nikon"). If you are using a wireless mobile adapter, the LED will light green when a connection is established.

Connection Status

Connection status is shown by an icon in the home display:

- : Connection established.
- : No connection. Tap the icon to open the smart device **Wi-Fi settings** menu and check Wi-Fi settings.



The Wireless Mobile Adapter

While the adapter is inserted, the camera exposure meters will not turn off; monitor the camera battery level to ensure that the camera does not power off unexpectedly. In addition, some camera menu items may be grayed out and unavailable and the camera can not be used for playback or live view. Movie recording can not be used.

Taking Photos

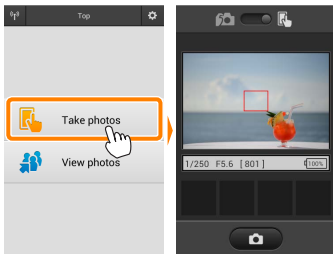
Take pictures remotely from the smart device, or take pictures with the camera and save them to the smart device.

Remote Photography

Follow the steps below to take photos from the smart device.

1 Tap Take photos.

The camera viewfinder will go dark and the smart device will display the view through the camera lens.

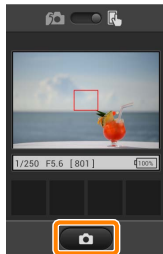


2 Focus.

In normal- and wide-area AF AF-area modes, tap the subject in the display to focus (if subject-tracking AF is selected, the camera will focus using wide-area AF).

3 Tap the shutter icon.

The shutter will be released after you remove your finger from the icon; the resulting photo is first saved to the camera memory card and then downloaded to the smart device. There is no need to point the smart device at the camera.



Remote Photography


Remote photography ends automatically when the battery in the camera or smart device runs low. Note that using remote photography for an extended period may cause the camera's internal temperature to rise; if necessary, remote photography will end automatically to minimize damage to camera circuits.

The smart device can not be used to adjust camera settings; use camera controls to adjust settings before starting Step 1. Regardless of the release mode selected with the camera, only one picture will be taken each time you tap the shutter icon. Note that the display may not update smoothly depending on the device and network conditions, and that panoramas can not be recorded using the easy panorama feature for the D3300.

A shutter speed of "Time" is available in mode **M**. Choose a shutter speed of **bulb** on the camera and select remote photography mode on the smart device, then tap the shutter icon to open the shutter. Shooting ends when the icon is tapped again. Note that the smart device will not display the view through the camera lens at a shutter speed of "Bulb", and that the smart device can not be used in shooting mode when "Time" is selected.

The Remote Photography Display



Mode selection: Tap  to select photo capture mode (page 9).

Settings: The following photography-related options can be accessed from the smart device menu:

- **Live view:** Turn the live view display on or off.
- **Remote shooting auto download:** Choose whether to download pictures to the smart device after shooting (remote shooting mode only).
- **Self-timer:** If **ON** is selected, the camera shutter will be released 2 s after you tap the shutter icon. The timer turns off automatically after the shutter is released.

Self-timer icon: Displayed when the self-timer is on.

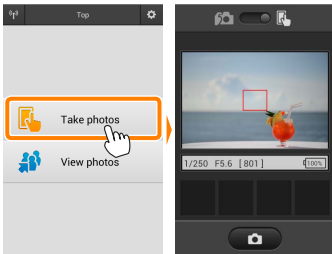
Camera settings: Shutter speed, aperture, etc. Not displayed when device is in landscape orientation.

Thumbnail area: Downloaded pictures.

Downloading Photos as They Are Taken

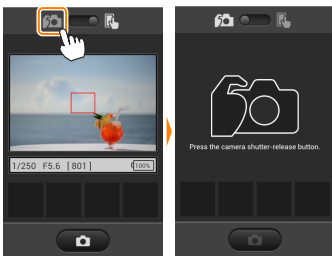
Take photos with the camera and save them to the smart device.

1 Tap Take photos.



2 Tap .

The dialog shown below at right will be displayed (page [10](#)).



3 Take photos.

Frame photos in the camera viewfinder and shoot. Photos are downloaded to the smart device after being saved to the camera memory card.



The Photo Capture Display

The photo capture display is shown below.



Mode selection: Tap  to select remote shooting mode (page [6](#)).

Thumbnail area: Downloaded pictures.

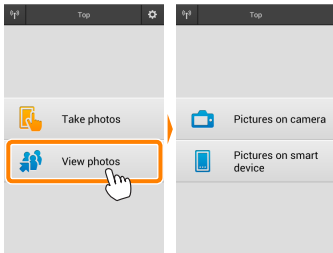
Viewing Photos

Tap **View photos** to view the pictures stored on the smart device. You can also view the pictures on the camera memory card and download selected images to the smart device.

Viewing Pictures

View the pictures in camera memory or on the smart device.

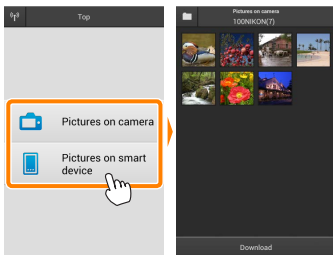
1 Tap **View photos**.



D5300: If the camera contains pictures currently selected for transmission to the smart device, a confirmation dialog will be displayed. Tap **Cancel** to view pictures.

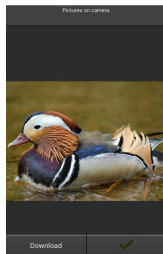
2 Choose a device.

Tap **Pictures on camera** to view the pictures on the camera memory card, **Pictures on smart device** to view the pictures stored on the smart device. The pictures will be displayed as small “thumbnail” images (in some cases, a folder list may be displayed; tap a folder to view the pictures it contains).



3 View pictures.

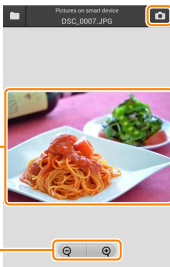
Tap a thumbnail to display the picture full frame. You can then swipe left or right to view additional pictures.



The Full-Frame Display

The full-frame display is shown below.

Tap picture to hide or view icons



Return to shooting mode (available only if display was accessed by tapping thumbnail in shooting display)

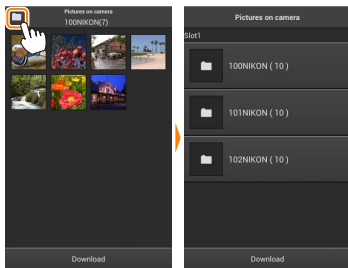
Zoom in or out

Movies

Movies can not be viewed using the Wireless Mobile Utility, but movies can be played back by tapping the movie or playback icon in the thumbnail list to display a list of movie apps and choosing an app from the list.

Folders

Downloaded pictures are stored in folders with names consisting of "C" (for new photos downloaded during shooting) or "D" (for existing pictures downloaded during playback) followed by the date, an underscore, and a 3-digit folder number. A new folder is created each time you launch the Wireless Mobile Utility and either capture new photos or download existing pictures. To view pictures in other folders, tap the folder icon at the top of the display and tap a folder to display its contents.

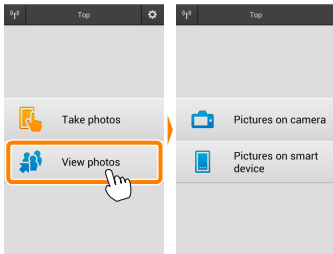


On the smart device, the path to folders created for new photos downloaded during shooting is `"/sdcard/Nikon_WU/Capture"`, while the path to those created for existing pictures downloaded during playback is `"/sdcard/Nikon_WU/Card"`.

Downloading Existing Pictures

Download pictures from the camera memory card.

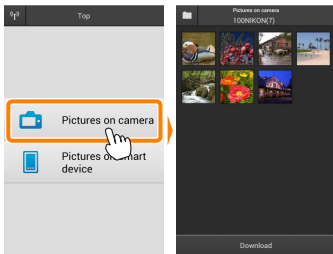
1 Tap **View photos**.



D5300: If the camera contains pictures currently selected for transmission to the smart device, a confirmation dialog will be displayed. Tap **OK** to begin download.

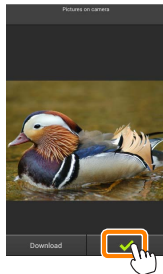
2 Tap **Pictures on camera**.

Tap **Pictures on camera** to view the pictures on the camera.

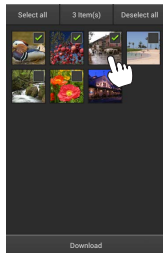


3 Select pictures for download.

Tap a thumbnail to display the picture full frame. You can then swipe left or right to display the desired picture and tap the check mark to select or deselect. Press the back button on the smart device to return to the thumbnail list.



Alternatively, you can select multiple pictures by touching and holding a thumbnail until check boxes are displayed at the top right corner of each picture and then tapping thumbnails to select or deselect. You can also tap **Select all** in the smart device menu to select all images or **Deselect all** to deselect all images.

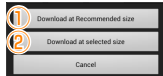


Folders

To select all images in a folder, tap the folder icon at the top of the display and then touch and hold the folder in the folder list.

4 Tap Download.

If only one picture is selected, you will be prompted to choose the size at which the picture will be copied to the smart device. Tap ① (**Download at [size]**) to download the picture at the size selected for **Image size** in the **Settings** menu (page [24](#)), or ② (**Download at selected size**) to choose a size before download (page [24](#)).



If multiple pictures are selected, a confirmation dialog will be displayed; tap **Download** to download the pictures at the size selected for **Image size** in the **Settings** menu (page [24](#)).

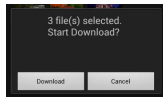
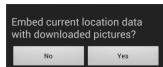


Image Size

Regardless of the size selected, pictures may sometimes be downloaded at their original size.

Location Data

The options shown at right will be displayed if **Settings > Embed location data > Pictures on camera** is enabled (page [24](#)).



Dropped Connections

If the wireless connection is lost while a picture is being downloaded, the picture will not be saved to the smart device (connection loss may occur if, for example, the camera turns off during download). Any pictures downloaded before the connection was interrupted are unaffected.

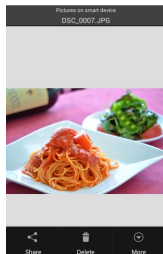
Sharing Pictures

Before sharing pictures, connect to a network with Internet access.

■ *Sharing Pictures One at a Time*

1 Display the smart device menu.

Display a picture full-frame and tap the menu button on the smart device to view menu options.



2 Tap Share.

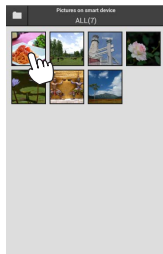
Tap **Share** and choose from a list of picture-sharing apps and functions (the specific contents of the list vary from device to device).



■ Sharing Multiple Picture

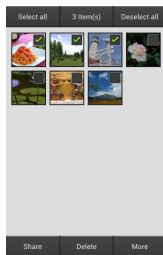
1 Display check boxes.

In the thumbnail list, touch and hold any of the pictures you want to share until a check mark is displayed in the top right corner and check boxes appear on the remaining images.



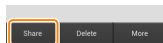
2 Select pictures.

Tap thumbnails to select or deselect. You can also tap **Select all** in the smart device menu to select all images or **Deselect all** to deselect all images.



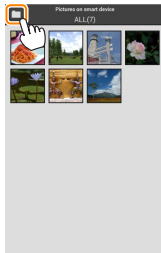
3 Tap Share.

Tap **Share** and choose from a list of picture-sharing apps and functions (the specific contents of the list vary from device to device).



Sharing Folders

To share all pictures in a folder, tap the folder icon at the top of the display to view folders, then touch and hold a folder to select all the pictures it contains. Selected pictures are indicated by check marks and can be shared by tapping **Share** as described in Step 3.



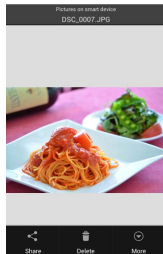
Deleting Pictures

Downloaded pictures can be deleted from the smart device one at a time or in groups. The Wireless Mobile Utility can not be used to delete pictures from the camera memory card.

■ *Deleting Pictures One at a Time*

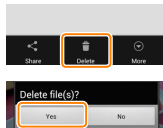
1 Display the smart device menu.

Display a picture full-frame and tap the menu button on the smart device to view menu options.



2 Tap Delete. Tap Delete.

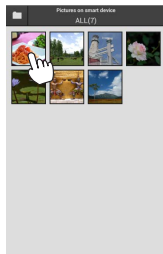
A confirmation dialog will be displayed; tap **Yes**.



Deleting Multiple Pictures

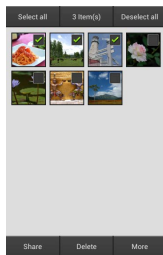
1 Display check boxes.

In the thumbnail list, touch and hold any of the pictures you want to delete until a check mark is displayed in the top right corner and check boxes appear on the remaining images.



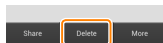
2 Select pictures.

Tap thumbnails to select or deselect. You can also tap **Select all** in the smart device menu to select all images or **Deselect all** to deselect all images.



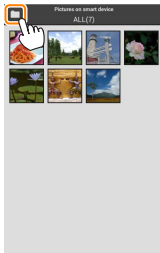
3 Tap Delete.

A confirmation dialog will be displayed; tap **Yes**.




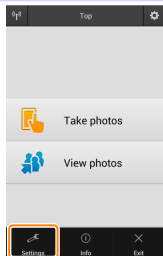
Deleting Folders

To delete all pictures in a folder, tap the folder icon at the top of the display to view folders, then touch and hold a folder to select all the pictures it contains. Selected pictures are indicated by check marks and can be deleted by tapping **Delete** as described in Step 3.



Wireless Mobile Utility Options

To access the options listed below, tap the  icon at the top right corner of the display or use the smart device menu in the Wireless Mobile Utility home display.



Settings

Option	Description
Synchronize clock	Choose whether to synchronize the camera clock with the smart device.
Battery options	Remote photography will end automatically when the camera or smart device battery reaches the selected level.
Thumbnails	Choose the size of the thumbnails in the playback display.
Embed location data	Choose whether to embed smart device location data in pictures not already containing location data provided by the camera. Note that devices not equipped with GPS or comparable location data functions may fail to supply the correct location.
Image size	When downloading multiple images, select Recommended size or VGA to copy images at sizes approximately equivalent to 1920 × 1080 or 640 × 480, respectively.
App auto launch	If ON is selected, the Wireless Mobile Utility will launch automatically when the smart device detects a signal from the camera.

Option	Description
Wireless Mobile Adapter settings	Adjust network settings for the wireless mobile adapter. Note that the Auto power-off delay and Advanced settings > WPS PIN/WPS mode options are not available with cameras featuring built-in Wi-Fi.
SSID	Choose an SSID for the wireless mobile adapter. The smart device displays the SSID when you connect to the network manually.
Authentication/encryption	Choose the authentication method used for connection to the network.
Password	Enter a password. The password type is selected using Advanced settings > Password entry : choose ASCII for an 8- to 63-character alphanumeric password, HEX for a 64-digit hexadecimal password.
Channel	Choose the wireless channel used by the network.
Auto power-off delay	Choose the delay before the wireless mobile adapter enters sleep when there is no wireless connection.
Advanced settings	<ul style="list-style-type: none"> • WPS PIN: Set the wireless mobile adapter WPS PIN. • WPS mode: Select the adapter WPS mode. • Password entry: Choose the password type. • Sub-net mask: Enter a subnet mask. • DHCP server IP address: Enter the wireless mobile adapter IP address. • DHCP client IP address: Enter the smart device IP address.
Current settings	View current wireless mobile adapter settings.
Format settings	Tap Yes to restore default settings.
Language	Choose the language in which the user interface for the Wireless Mobile Utility is displayed.

 **Info**

Option	Description
Camera	The name of the camera currently connected.
Wireless Mobile Adapter	View information about the wireless connection. The serial number and firmware version are displayed only if the camera is connected via the wireless mobile adapter.
Link speed	View the transmission rate.
Serial number	View the product serial number.
Firmware version	View the current firmware version.
App	Select About to view Wireless Mobile Utility version information, Check for updates to connect to the Google Play service and check for updates, or License Terms and Conditions to view the terms of use for this application.

 **Exit**

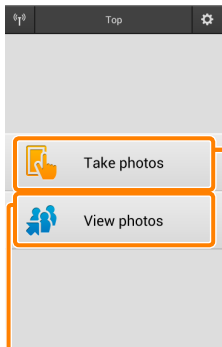
Exit the Wireless Mobile Utility.

B D3200, COOLPIX A

This section describes the options available when the Wireless Mobile Utility and an optional wireless mobile adapter are used to connect to D3200 and COOLPIX A cameras.

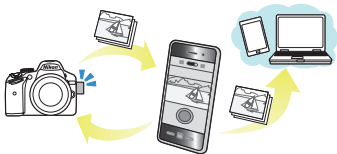
Features

Use the Wireless Mobile Utility to:



Take pictures remotely (📖 [31](#)): Tap the shutter icon in the Wireless Mobile Utility to take pictures and download them to the smart device.

Download pictures as they are taken (📖 [34](#)): Take pictures with the camera and save them to the smart device.



View pictures (📖 [36](#)): View the pictures stored on the smart device or the camera memory card.

Download pictures (📖 [40](#)): Download existing pictures from the camera memory card.

Share pictures (📖 [43](#)): Share pictures via e-mail or upload pictures to photo-sharing sites.

For information on inserting the adapter, see page [29](#).

Notices

- No part of this manual may be reproduced, transmitted, transcribed, stored in a retrieval system, or translated into any language in any form without Nikon's prior written permission.
- Nikon reserves the right to change the specifications of the hardware and software described in this manual at any time and without prior notice. Nikon will not be held liable for damages that may result from any mistakes that this manual may contain.

System Requirements

Before installing the Wireless Mobile Utility, confirm that your smart device meets the following system requirements:

OS	<ul style="list-style-type: none">• Smartphone: Android 2.3 series, Android 4.x series• Tablet: Android 4.x series
Wireless LAN	11b/g/n
Screen resolution	800 × 480 pixels (WVGA) or higher

Using This Application for the First Time

You must accept the terms and conditions of the End User License Agreement (EULA) before connecting.

Installing the App

- 1 Locate the app on Google Play.**
Connect to Google Play on the smart device and search for “Wireless Mobile Utility”.
- 2 Install the app.**
Install the Wireless Mobile Utility.

Establishing a Wireless Connection

- 1 Connect the wireless mobile adapter.**
Attach the wireless mobile adapter to the camera and turn the camera on. See the manual supplied with the wireless mobile adapter for details.
- 2 Ready the smart device.**
Select **Wi-Fi settings > WPS button connection**. The smart device will wait for a signal from the camera.
- 3 Press the WPS button.**
Press the WPS button on the wireless mobile adapter for about 5 s until the LED on the wireless mobile adapter flashes red and green.
- 4 Launch the Wireless Mobile Utility.**
When a connection is established, the LED on the wireless mobile adapter will glow green and the main dialog for the Wireless Mobile Utility will be displayed on the smart device. For information on taking pictures, see page [31](#). For information on viewing pictures, see page [36](#).

WPS



WPS (Wi-Fi Protected Setup) is a standard designed to make it easy to establish a secure wireless network. For information on the steps involved and the length of time the smart device will wait for a connection, see the documentation supplied with the smart device.

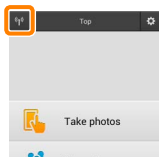
Manual Wireless Connections

- 1 Display Wi-Fi settings for the smart device.
- 2 Select the appropriate SSID (the default SSID begins with "Nikon"). The LED will light green when a connection is established.

Connection Status

Connection status is shown by an icon in the home display:

- : Connection established.
- : No connection. Tap the icon to open the smart device **Wi-Fi settings** menu and check Wi-Fi settings.



The Wireless Mobile Adapter

While the adapter is inserted, the camera exposure meters will not turn off; monitor the camera battery level to ensure that the camera does not power off unexpectedly. In addition, some camera menu items may be grayed out and unavailable and the camera can not be used for playback or live view. Movie recording can not be used.

Taking Photos

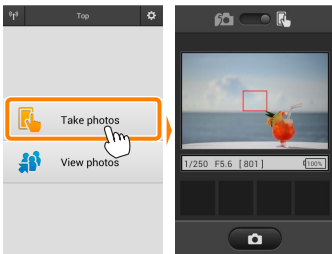
Take pictures remotely from the smart device, or take pictures with the camera and save them to the smart device.

Remote Photography

Follow the steps below to take photos from the smart device.

1 Tap Take photos.

The camera viewfinder will go dark and the smart device will display the view through the camera lens.



2 Tap the shutter icon.

Tap the shutter icon. If the camera is able to focus, the shutter will be released after you remove your finger from the icon; the resulting photo is first saved to the camera memory card and then downloaded to the smart device. There is no need to point the smart device at the wireless mobile adapter.



✔ Remote Photography

Remote photography ends automatically when the battery in the camera or smart device runs low. Note that using remote photography for an extended period may cause the camera's internal temperature to rise; if necessary, remote photography will end automatically to minimize damage to camera circuits.

The smart device can not be used to adjust camera settings; use camera controls to adjust settings before starting Step 1. Regardless of the release mode selected with the camera, only one picture will be taken each time you tap the shutter icon. Note that the display may not update smoothly depending on the device and network conditions.

In normal- and wide-area AF AF-area modes, the camera will focus on the subject in the focus area selected with the camera; if subject-tracking AF is selected, the camera will focus using wide-area AF.

The Remote Photography Display



Mode selection: Tap  to select photo capture mode (page [34](#)).

Settings: The following photography-related options can be accessed from the smart device menu.

- **Remote shooting auto download:** Choose whether to download pictures to the smart device after shooting (remote shooting mode only).
- **Self-timer:** If **ON** is selected, the camera shutter will be released 2 s after you tap the shutter icon. The timer turns off automatically after the shutter is released.

Self-timer icon: Displayed when the self-timer is on.

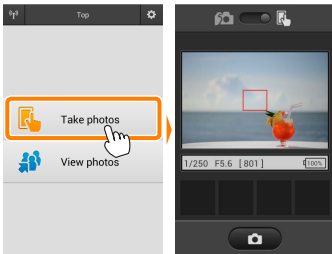
Camera settings: Shutter speed, aperture, etc. Not displayed when device is in landscape orientation.

Thumbnail area: Downloaded pictures.

Downloading Photos as They Are Taken

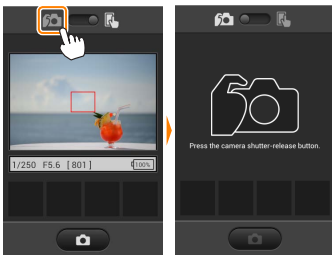
Take photos with the camera and save them to the smart device.

1 Tap Take photos.



2 Tap .

The dialog shown below at right will be displayed (page [35](#)).



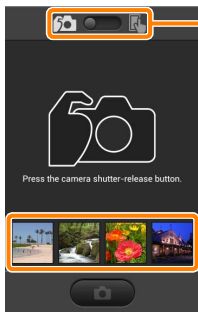
3 Take photos.

Frame photos in the camera viewfinder and shoot. Photos are downloaded to the smart device after being saved to the camera memory card.



The Photo Capture Display

The photo capture display is shown below.



Mode selection: Tap  to select remote shooting mode (page [31](#)).

Thumbnail area: Downloaded pictures.

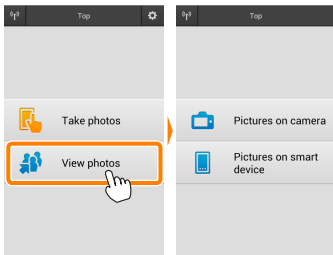
Viewing Photos

Tap **View photos** to view the pictures stored on the smart device. You can also view the pictures on the camera memory card and download selected images to the smart device.

Viewing Pictures

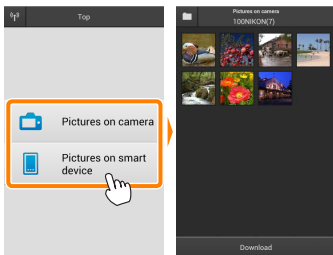
View the pictures in camera memory or on the smart device.

1 Tap **View photos**.



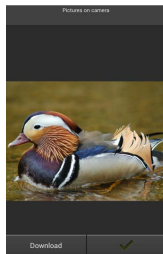
2 Choose a device.

Tap **Pictures on camera** to view the pictures on the camera memory card, **Pictures on smart device** to view the pictures stored on the smart device. The pictures will be displayed as small “thumbnail” images (in some cases, a folder list may be displayed; tap a folder to view the pictures it contains).



3 View pictures.

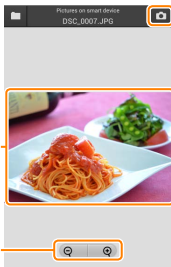
Tap a thumbnail to display the picture full frame. You can then swipe left or right to view additional pictures.



The Full-Frame Display

The full-frame display is shown below.

Tap picture to hide or view icons



Return to shooting mode (available only if display was accessed by tapping thumbnail in shooting display)

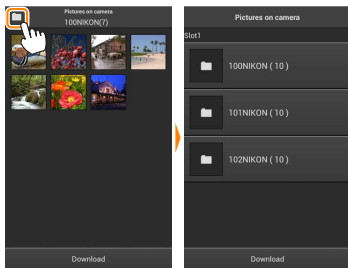
Zoom in or out

Movies

Movies can not be viewed using the Wireless Mobile Utility, but movies can be played back by tapping the movie or playback icon in the thumbnail list to display a list of movie apps and choosing an app from the list.

Folders

Downloaded pictures are stored in folders with names consisting of "C" (for new photos downloaded during shooting) or "D" (for existing pictures downloaded during playback) followed by the date, an underscore, and a 3-digit folder number. A new folder is created each time you launch the Wireless Mobile Utility and either capture new photos or download existing pictures. To view pictures in other folders, tap the folder icon at the top of the display and tap a folder to display its contents.

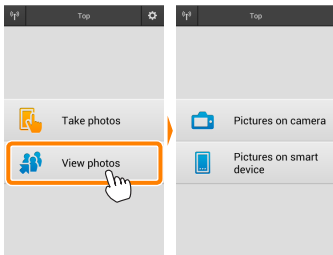


On the smart device, the path to folders created for new photos downloaded during shooting is `"/sdcard/Nikon_WU/Capture"`, while the path to those created for existing pictures downloaded during playback is `"/sdcard/Nikon_WU/Card"`.

Downloading Existing Pictures

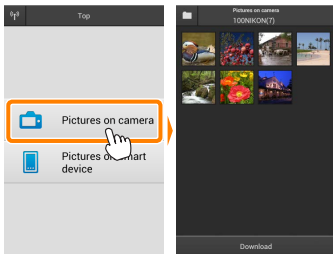
Download pictures from the camera memory card.

1 Tap View photos.



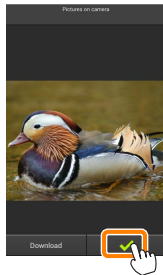
2 Tap Pictures on camera.

Tap Pictures on camera to view the pictures on the camera.

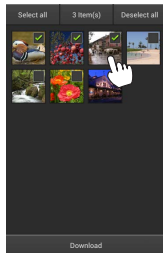


3 Select pictures for download.

Tap a thumbnail to display the picture full frame. You can then swipe left or right to display the desired picture and tap the check mark to select or deselect. Press the back button on the smart device to return to the thumbnail list.



Alternatively, you can select multiple pictures by touching and holding a thumbnail until check boxes are displayed at the top right corner of each picture and then tapping thumbnails to select or deselect. You can also tap **Select all** in the smart device menu to select all images or **Deselect all** to deselect all images.

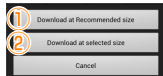


Folders

To select all images in a folder, tap the folder icon at the top of the display and then touch and hold the folder in the folder list.

4 Tap Download.

If only one picture is selected, you will be prompted to choose the size at which the picture will be copied to the smart device. Tap ① (**Download at [size]**) to download the picture at the size selected for **Image size** in the **Settings** menu (page 49), or ② (**Download at selected size**) to choose a size before download (page 49).



If multiple pictures are selected, a confirmation dialog will be displayed; tap **Download** to download the pictures at the size selected for **Image size** in the **Settings** menu (page 49).

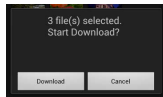
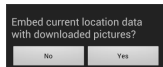


Image Size

Regardless of the size selected, pictures may sometimes be downloaded at their original size.

Location Data

The options shown at right will be displayed if **Settings > Embed location data > Pictures on camera** is enabled (page 49).



Dropped Connections

If the wireless connection is lost while a picture is being downloaded, the picture will not be saved to the smart device (connection loss may occur if, for example, the camera turns off during download). Any pictures downloaded before the connection was interrupted are unaffected.

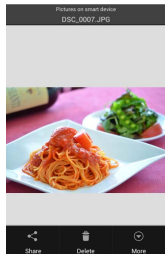
Sharing Pictures

Before sharing pictures, connect to a network with Internet access.

■ *Sharing Pictures One at a Time*

1 Display the smart device menu.

Display a picture full-frame and tap the menu button on the smart device to view menu options.



2 Tap Share.

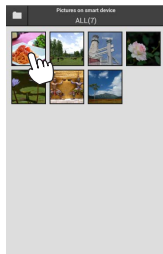
Tap **Share** and choose from a list of picture-sharing apps and functions (the specific contents of the list vary from device to device).



■ Sharing Multiple Pictures

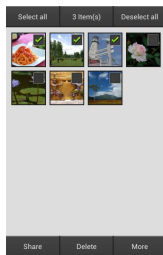
1 Display check boxes.

In the thumbnail list, touch and hold any of the pictures you want to share until a check mark is displayed in the top right corner and check boxes appear on the remaining images.



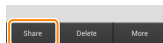
2 Select pictures.

Tap thumbnails to select or deselect. You can also tap **Select all** in the smart device menu to select all images or **Deselect all** to deselect all images.



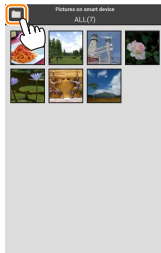
3 Tap Share.

Tap **Share** and choose from a list of picture-sharing apps and functions (the specific contents of the list vary from device to device).



Sharing Folders

To share all pictures in a folder, tap the folder icon at the top of the display to view folders, then touch and hold a folder to select all the pictures it contains. Selected pictures are indicated by check marks and can be shared by tapping **Share** as described in Step 3.



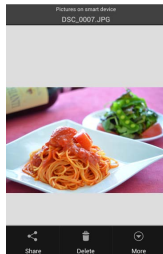
Deleting Pictures

Downloaded pictures can be deleted from the smart device one at a time or in groups. The Wireless Mobile Utility can not be used to delete pictures from the camera memory card.

■ *Deleting Pictures One at a Time*

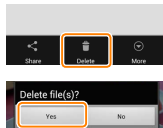
1 Display the smart device menu.

Display a picture full-frame and tap the menu button on the smart device to view menu options.



2 Tap Delete. Tap Delete.

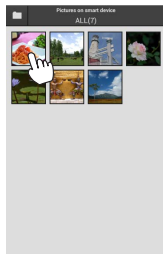
A confirmation dialog will be displayed; tap **Yes**.



Deleting Multiple Pictures

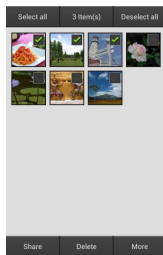
1 Display check boxes.

In the thumbnail list, touch and hold any of the pictures you want to delete until a check mark is displayed in the top right corner and check boxes appear on the remaining images.



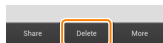
2 Select pictures.

Tap thumbnails to select or deselect. You can also tap **Select all** in the smart device menu to select all images or **Deselect all** to deselect all images.



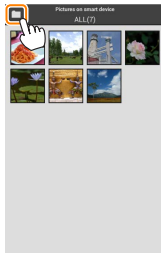
3 Tap Delete.

A confirmation dialog will be displayed; tap **Yes**.




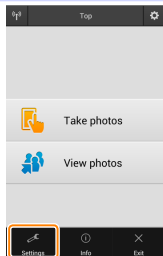
Deleting Folders

To delete all pictures in a folder, tap the folder icon at the top of the display to view folders, then touch and hold a folder to select all the pictures it contains. Selected pictures are indicated by check marks and can be deleted by tapping **Delete** as described in Step 3.



Wireless Mobile Utility Options

To access the options listed below, tap the  icon at the top right corner of the display or use the smart device menu in the Wireless Mobile Utility home display.



Settings

Option	Description
Synchronize clock	Choose whether to synchronize the camera clock with the smart device.
Battery options	Remote photography will end automatically when the camera or smart device battery reaches the selected level.
Thumbnails	Choose the size of the thumbnails in the playback display.
Embed location data	Choose whether to embed smart device location data in pictures not already containing location data provided by the camera. Note that devices not equipped with GPS or comparable location data functions may fail to supply the correct location.
Image size	When downloading multiple images, select Recommended size or VGA to copy images at sizes approximately equivalent to 1920 × 1080 or 640 × 480, respectively.
App auto launch	If ON is selected, the Wireless Mobile Utility will launch automatically when the smart device detects a signal from the wireless mobile adapter.

Option	Description
Wireless Mobile Adapter settings	Adjust network settings for the wireless mobile adapter.
SSID	Choose an SSID for the wireless mobile adapter. The smart device displays the SSID when you connect to the network manually.
Authentication/encryption	Choose the authentication method used for connection to the network.
Password	Enter a password. The password type is selected using Advanced settings > Password entry : choose ASCII for an 8- to 63-character alphanumeric password, HEX for a 64-digit hexadecimal password.
Channel	Choose the wireless channel used by the network.
Auto power-off delay	Choose the delay before the wireless mobile adapter enters sleep when there is no wireless connection.
Advanced settings	<ul style="list-style-type: none"> • WPS PIN: Set the wireless mobile adapter WPS PIN. • WPS mode: Select the adapter WPS mode. • Password entry: Choose the password type. • Sub-net mask: Enter a subnet mask. • DHCP server IP address: Enter the wireless mobile adapter IP address. • DHCP client IP address: Enter the smart device IP address.
Current settings	View current wireless mobile adapter settings.
Format settings	Tap Yes to restore default settings.
Language	Choose the language in which the user interface for the Wireless Mobile Utility is displayed.

 **Info**

Option	Description
Camera	The name of the camera currently connected.
Wireless Mobile Adapter	View information about the wireless mobile adapter.
Link speed	View the transmission rate.
Serial number	View the product serial number.
Firmware version	View the current firmware version.
App	Select About to view Wireless Mobile Utility version information, Check for updates to connect to the Google Play service and check for updates, or License Terms and Conditions to view the terms of use for this application.

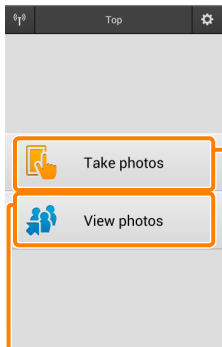
 **Exit**

Exit the Wireless Mobile Utility.

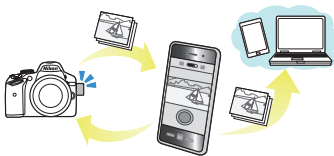
This section describes the options available when the Wireless Mobile Utility is used with Nikon 1 cameras that offer built-in Wi-Fi or support the optional wireless mobile adapter.

Features

Use the Wireless Mobile Utility to:



Take pictures remotely (📖 [56](#)): Tap the shutter icon in the Wireless Mobile Utility to take pictures and download them to the smart device.



View pictures (📖 [59](#)): View the pictures stored on the smart device or the camera memory card.

Download pictures (📖 [63](#)): Download existing pictures from the camera memory card.

Share pictures (📖 [66](#)): Share pictures via e-mail or upload pictures to photo-sharing sites.

For information on inserting the adapter, see page [54](#).

Notices

- No part of this manual may be reproduced, transmitted, transcribed, stored in a retrieval system, or translated into any language in any form without Nikon's prior written permission.
- Nikon reserves the right to change the specifications of the hardware and software described in this manual at any time and without prior notice. Nikon will not be held liable for damages that may result from any mistakes that this manual may contain.

System Requirements

Before installing the Wireless Mobile Utility, confirm that your smart device meets the following system requirements:

OS	<ul style="list-style-type: none">• Smartphone: Android 2.3 series, Android 4.x series• Tablet: Android 4.x series
Wireless LAN	11b/g/n
Screen resolution	800 × 480 pixels (WVGA) or higher

Using This Application for the First Time

You must accept the terms and conditions of the End User License Agreement (EULA) before connecting.

Installing the App

- 1 Locate the app on Google Play.**
Connect to Google Play on the smart device and search for “Wireless Mobile Utility”.
- 2 Install the app.**
Install the Wireless Mobile Utility.

Establishing a Wireless Connection

- 1 Connect the wireless mobile adapter.**
Attach the wireless mobile adapter to the camera and turn the camera on. See the manual supplied with the wireless mobile adapter for details.
- 2 Ready the smart device.**
Select **Wi-Fi settings > WPS button connection**. The smart device will wait for a signal from the camera.
- 3 Press the WPS button.**
Press the WPS button on the wireless mobile adapter for about 5 s until the LED on the wireless mobile adapter flashes red and green.
- 4 Launch the Wireless Mobile Utility.**
When a connection is established, the LED on the wireless mobile adapter will glow green and the main dialog for the Wireless Mobile Utility will be displayed on the smart device. For information on taking pictures, see page [56](#). For information on viewing pictures, see page [59](#).

WPS



WPS (Wi-Fi Protected Setup) is a standard designed to make it easy to establish a secure wireless network. For information on the steps involved and the length of time the smart device will wait for a connection, see the documentation supplied with the smart device.

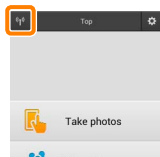
Manual Wireless Connections

- 1 Display Wi-Fi settings for the smart device.
- 2 Select the appropriate SSID (the default SSID begins with "Nikon"). The LED will light green when a connection is established.

Connection Status

Connection status is shown by an icon in the home display:

- : Connection established.
- : No connection. Tap the icon to open the smart device **Wi-Fi settings** menu and check Wi-Fi settings.



The Wireless Mobile Adapter

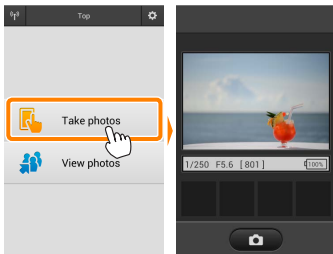
While the adapter is inserted, the camera exposure meters will not turn off; monitor the camera battery level to ensure that the camera does not power off unexpectedly. In addition, some camera menu items may be grayed out and unavailable and the camera can not be used for playback or live view. Movie recording can not be used.

Taking Photos

Follow the steps below to take photos from the smart device.

1 Tap Take photos.

The camera viewfinder will go dark and the smart device will display the view through the camera lens.



2 Tap the shutter icon.

The shutter will be released after you remove your finger from the icon and the camera focuses (note that no photo will be taken if the camera is unable to focus); the resulting photo is first saved to the camera memory card and then downloaded to the smart device. There is no need to point the smart device at the wireless mobile adapter.



✔ Remote Photography

Remote photography ends automatically when the battery in the camera or smart device runs low. Note that using remote photography for an extended period may cause the camera's internal temperature to rise; if necessary, remote photography will end automatically to minimize damage to camera circuits.

The smart device can not be used to adjust camera settings; use camera controls to adjust settings before starting Step 1. Regardless of the release mode selected with the camera, only one picture will be taken each time you tap the shutter icon. Note that the display may not update smoothly depending on the device and network conditions.

Regardless of the settings selected with the camera, pictures will be taken in mode **P** (programmed auto) using single-servo autofocus (AF-S) and auto-area AF. **Face-priority AF** is disabled and the focus point is not displayed.

The Remote Photography Display



Settings: The following photography-related options can be accessed from the smart device menu.

- **Remote shooting auto download:** Choose whether to download pictures to the smart device after shooting.
- **Self-timer:** If **ON** is selected, the camera shutter will be released 2 s after you tap the shutter icon. The timer turns off automatically after the shutter is released.

Self-timer icon: Displayed when the self-timer is on.

Camera settings: Shutter speed, aperture, etc. Not displayed when device is in landscape orientation.

Thumbnail area: Downloaded pictures.

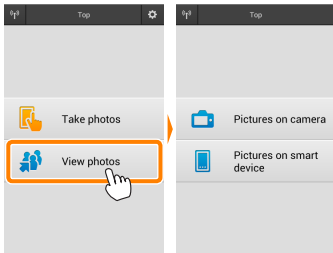
Viewing Photos

Tap **View photos** to view the pictures stored on the smart device. You can also view the pictures on the camera memory card and download selected images to the smart device.

Viewing Pictures

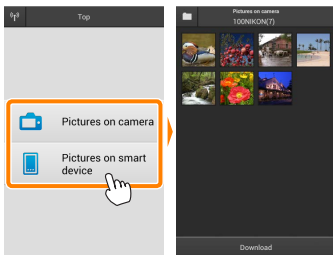
View the pictures in camera memory or on the smart device.

1 Tap **View photos**.



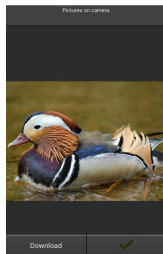
2 Choose a device.

Tap **Pictures on camera** to view the pictures on the camera memory card, **Pictures on smart device** to view the pictures stored on the smart device. The pictures will be displayed as small “thumbnail” images (in some cases, a folder list may be displayed; tap a folder to view the pictures it contains).



3 View pictures.

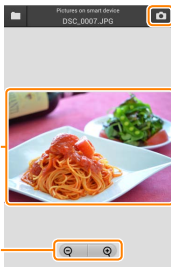
Tap a thumbnail to display the picture full frame. You can then swipe left or right to view additional pictures.



The Full-Frame Display

The full-frame display is shown below.

Tap picture to hide or view icons



Return to shooting mode (available only if display was accessed by tapping thumbnail in shooting display)

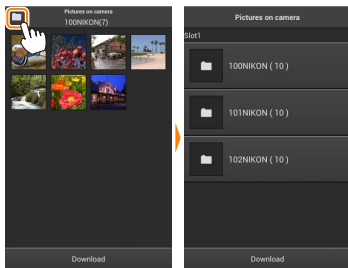
Zoom in or out

Movies

Movies can not be viewed using the Wireless Mobile Utility, but movies can be played back by tapping the movie or playback icon in the thumbnail list to display a list of movie apps and choosing an app from the list.

Folders

Downloaded pictures are stored in folders with names consisting of "C" (for new photos downloaded during shooting) or "D" (for existing pictures downloaded during playback) followed by the date, an underscore, and a 3-digit folder number. A new folder is created each time you launch the Wireless Mobile Utility and either capture new photos or download existing pictures. To view pictures in other folders, tap the folder icon at the top of the display and tap a folder to display its contents.

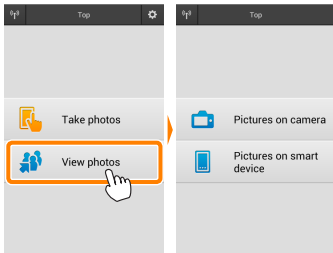


On the smart device, the path to folders created for new photos downloaded during shooting is `"/sdcard/Nikon_WU/Capture"`, while the path to those created for existing pictures downloaded during playback is `"/sdcard/Nikon_WU/Card"`.

Downloading Existing Pictures

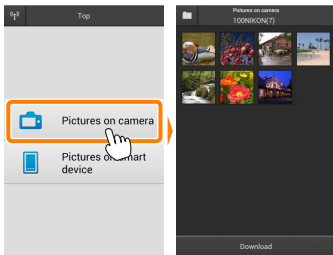
Download pictures from the camera memory card.

1 Tap View photos.



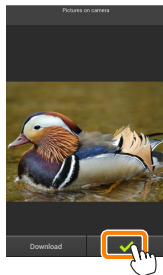
2 Tap Pictures on camera.

Tap Pictures on camera to view the pictures on the camera.

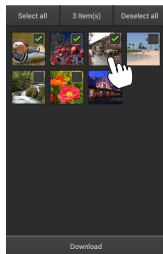


3 Select pictures for download.

Tap a thumbnail to display the picture full frame. You can then swipe left or right to display the desired picture and tap the check mark to select or deselect. Press the back button on the smart device to return to the thumbnail list.



Alternatively, you can select multiple pictures by touching and holding a thumbnail until check boxes are displayed at the top right corner of each picture and then tapping thumbnails to select or deselect. You can also tap **Select all** in the smart device menu to select all images or **Deselect all** to deselect all images.

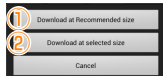


Folders

To select all images in a folder, tap the folder icon at the top of the display and then touch and hold the folder in the folder list.

4 Tap Download.

If only one picture is selected, you will be prompted to choose the size at which the picture will be copied to the smart device. Tap ① (**Download at [size]**) to download the picture at the size selected for **Image size** in the **Settings** menu (page [72](#)), or ② (**Download at selected size**) to choose a size before download (page [72](#)).



If multiple pictures are selected, a confirmation dialog will be displayed; tap **Download** to download the pictures at the size selected for **Image size** in the **Settings** menu (page [72](#)).

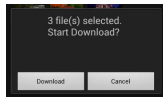
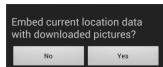


Image Size

Regardless of the size selected, pictures may sometimes be downloaded at their original size.

Location Data

The options shown at right will be displayed if **Settings > Embed location data > Pictures on camera** is enabled (page [72](#)).



Dropped Connections

If the wireless connection is lost while a picture is being downloaded, the picture will not be saved to the smart device (connection loss may occur if, for example, the camera turns off during download). Any pictures downloaded before the connection was interrupted are unaffected.

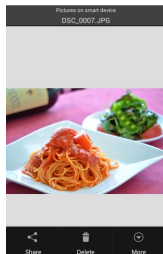
Sharing Pictures

Before sharing pictures, connect to a network with Internet access.

■ *Sharing Pictures One at a Time*

1 Display the smart device menu.

Display a picture full-frame and tap the menu button on the smart device to view menu options.



2 Tap Share.

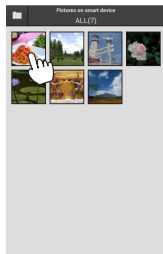
Tap **Share** and choose from a list of picture-sharing apps and functions (the specific contents of the list vary from device to device).



■ Sharing Multiple Pictures

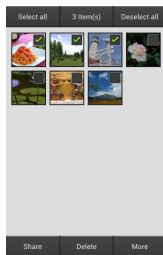
1 Display check boxes.

In the thumbnail list, touch and hold any of the pictures you want to share until a check mark is displayed in the top right corner and check boxes appear on the remaining images.



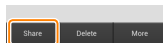
2 Select pictures.

Tap thumbnails to select or deselect. You can also tap **Select all** in the smart device menu to select all images or **Deselect all** to deselect all images.



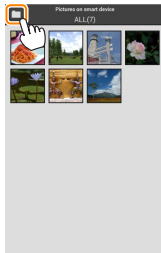
3 Tap Share.

Tap **Share** and choose from a list of picture-sharing apps and functions (the specific contents of the list vary from device to device).



Sharing Folders

To share all pictures in a folder, tap the folder icon at the top of the display to view folders, then touch and hold a folder to select all the pictures it contains. Selected pictures are indicated by check marks and can be shared by tapping **Share** as described in Step 3.



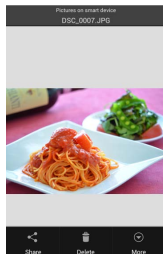
Deleting Pictures

Downloaded pictures can be deleted from the smart device one at a time or in groups. The Wireless Mobile Utility can not be used to delete pictures from the camera memory card.

■ *Deleting Pictures One at a Time*

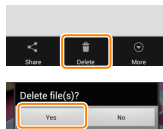
1 Display the smart device menu.

Display a picture full-frame and tap the menu button on the smart device to view menu options.



2 Tap Delete. Tap Delete.

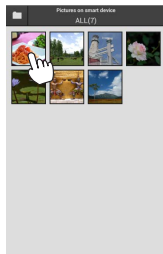
A confirmation dialog will be displayed; tap **Yes**.



Deleting Multiple Pictures

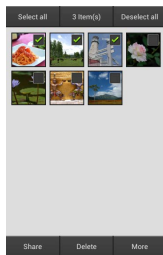
1 Display check boxes.

In the thumbnail list, touch and hold any of the pictures you want to delete until a check mark is displayed in the top right corner and check boxes appear on the remaining images.



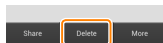
2 Select pictures.

Tap thumbnails to select or deselect. You can also tap **Select all** in the smart device menu to select all images or **Deselect all** to deselect all images.



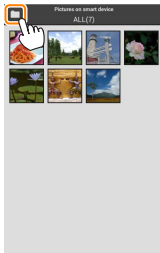
3 Tap Delete.

A confirmation dialog will be displayed; tap **Yes**.




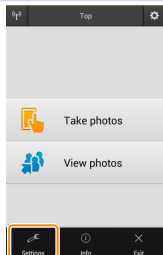
Deleting Folders

To delete all pictures in a folder, tap the folder icon at the top of the display to view folders, then touch and hold a folder to select all the pictures it contains. Selected pictures are indicated by check marks and can be deleted by tapping **Delete** as described in Step 3.



Wireless Mobile Utility Options

To access the options listed below, tap the  icon at the top right corner of the display or use the smart device menu in the Wireless Mobile Utility home display.



Settings

Option	Description
Synchronize clock	Choose whether to synchronize the camera clock with the smart device.
Battery options	Remote photography will end automatically when the camera or smart device battery reaches the selected level.
Thumbnails	Choose the size of the thumbnails in the playback display.
Embed location data	Choose whether to embed smart device location data in pictures not already containing location data provided by the camera. Note that devices not equipped with GPS or comparable location data functions may fail to supply the correct location.
Image size	When downloading multiple images, select Recommended size or VGA to copy images at sizes approximately equivalent to 1920 × 1080 or 640 × 480, respectively.
App auto launch	If ON is selected, the Wireless Mobile Utility will launch automatically when the smart device detects a signal from the wireless mobile adapter.

Option	Description
Wireless Mobile Adapter settings	Adjust network settings for the wireless mobile adapter.
SSID	Choose an SSID for the wireless mobile adapter. The smart device displays the SSID when you connect to the network manually.
Authentication/encryption	Choose the authentication method used for connection to the network.
Password	Enter a password. The password type is selected using Advanced settings > Password entry : choose ASCII for an 8- to 63-character alphanumeric password, HEX for a 64-digit hexadecimal password.
Channel	Choose the wireless channel used by the network.
Auto power-off delay	Choose the delay before the wireless mobile adapter enters sleep when there is no wireless connection.
Advanced settings	<ul style="list-style-type: none"> • WPS PIN: Set the wireless mobile adapter WPS PIN. • WPS mode: Select the adapter WPS mode. • Password entry: Choose the password type. • Sub-net mask: Enter a subnet mask. • DHCP server IP address: Enter the wireless mobile adapter IP address. • DHCP client IP address: Enter the smart device IP address.
Current settings	View current wireless mobile adapter settings.
Format settings	Tap Yes to restore default settings.
Language	Choose the language in which the user interface for the Wireless Mobile Utility is displayed.

Info

Option	Description
Camera	The name of the camera currently connected.
Wireless Mobile Adapter	View information about the wireless mobile adapter.
Link speed	View the transmission rate.
Serial number	View the product serial number.
Firmware version	View the current firmware version.
App	Select About to view Wireless Mobile Utility version information, Check for updates to connect to the Google Play service and check for updates, or License Terms and Conditions to view the terms of use for this application.

Exit

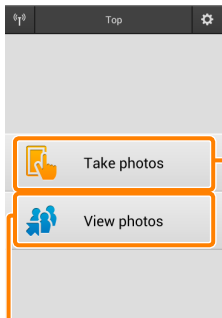
Exit the Wireless Mobile Utility.

D Other COOLPIX Cameras

This section describes the options available when the Wireless Mobile Utility is used with COOLPIX cameras that offer built-in Wi-Fi or support the optional wireless mobile adapter.

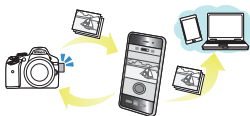
Features

Use the Wireless Mobile Utility to:



Take pictures remotely (📖 [79](#)): Tap the shutter icon in the Wireless Mobile Utility to take pictures and download them to the smart device.

Download pictures as they are taken (📖 [82](#)): Take pictures with a compatible camera and save them to the smart device.



View pictures (📖 [84](#)): View the pictures stored on the smart device or the camera memory card.

Download pictures (📖 [88](#)): Download existing pictures from the camera memory card.

Share pictures (📖 [91](#)): Share pictures via e-mail or upload pictures to photo-sharing sites.

For information on establishing a connection, see page [77](#).

Notices

- No part of this manual may be reproduced, transmitted, transcribed, stored in a retrieval system, or translated into any language in any form without Nikon's prior written permission.
- Nikon reserves the right to change the specifications of the hardware and software described in this manual at any time and without prior notice. Nikon will not be held liable for damages that may result from any mistakes that this manual may contain.

System Requirements

Before installing the Wireless Mobile Utility, confirm that your smart device meets the following system requirements:

OS	<ul style="list-style-type: none">• Smartphone: Android 2.3 series, Android 4.x series• Tablet: Android 4.x series
Wireless LAN	11b/g/n
Screen resolution	800 × 480 pixels (WVGA) or higher

Using This Application for the First Time

You must accept the terms and conditions of the End User License Agreement (EULA) before connecting.

Wi-Fi

The camera Wi-Fi function is available only when a memory card is inserted and no USB or HDMI cables are connected.

Installing the App

- 1 Locate the app on Google Play.**
Connect to Google Play on the smart device and search for “Wireless Mobile Utility”.
- 2 Install the app.**
Install the Wireless Mobile Utility.

Establishing a Wireless Connection

The following applies only to cameras without built-in Wi-Fi. For information on cameras with built-in Wi-Fi, see the manual provided with the camera.

- 1 Connect the wireless mobile adapter.**
Attach the wireless mobile adapter to the camera and turn the camera on. See the manual supplied with the wireless mobile adapter for details.
- 2 Ready the smart device.**
Select **Wi-Fi settings > WPS button connection**. The smart device will wait for a signal from the camera.
- 3 Press the WPS button.**
Press the WPS button on the wireless mobile adapter for about 5 s until the LED on the wireless mobile adapter flashes red and green.
- 4 Launch the Wireless Mobile Utility.**
When a connection is established, the LED on the wireless mobile adapter will glow green and the main dialog for the Wireless Mobile Utility will be displayed on the smart device. For information on taking pictures, see page [79](#). For information on viewing pictures, see page [84](#).

WPS



WPS (Wi-Fi Protected Setup) is a standard designed to make it easy to establish a secure wireless network. For information on the steps involved and the length of time the smart device will wait for a connection, see the documentation supplied with the smart device.

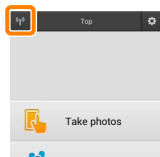
Manual Wireless Connections

- 1 Display Wi-Fi settings for the smart device.
- 2 Select the appropriate SSID (the default SSID begins with "Nikon"). If you are using a wireless mobile adapter, the LED will light green when a connection is established.

Connection Status

Connection status is shown by an icon in the home display:

- : Connection established.
- : No connection. Tap the icon to open the smart device **Wi-Fi settings** menu and check Wi-Fi settings.



The Wireless Mobile Adapter (for Cameras Without Built-in Wi-Fi)

While the adapter is inserted, the camera exposure meters will not turn off; monitor the camera battery level to ensure that the camera does not power off unexpectedly. In addition, some camera menu items may be grayed out and unavailable and the camera can not be used for playback or live view. Movie recording can not be used.

Taking Photos

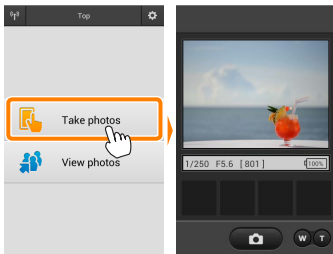
Take pictures remotely from the smart device, or take pictures with the camera and save them to the smart device.

Remote Photography

Follow the steps below to take photos from the smart device.

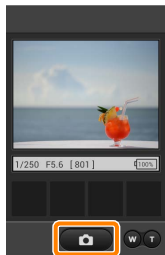
1 Tap Take photos.

The camera viewfinder will go dark and the smart device will display the view through the camera lens.



2 Tap the shutter icon.


The shutter will be released after you remove your finger from the icon and the camera focuses; the resulting photo is first saved to the camera memory card and then downloaded to the smart device. There is no need to point the smart device at the camera.



Remote Photography


Remote photography ends automatically when the battery in the camera or smart device runs low. Note that using remote photography for an extended period may cause the camera's internal temperature to rise; if necessary, remote photography will end automatically to minimize damage to camera circuits.

The smart device can not be used to adjust camera settings; use camera controls to adjust settings before starting Step 1. Regardless of the release mode selected with the camera, only one picture will be taken each time you tap the shutter icon. Note that the display may not update smoothly depending on the device and network conditions.

Regardless of the settings selected with the camera, pictures will be taken in  (auto) mode using target finding autofocus. The focus point is not displayed.

The Remote Photography Display



Mode selection: Tap  to select photo capture mode (compatible cameras only; page [82](#)).

Settings: The following photography-related options can be accessed from the smart device menu:

- **Remote shooting auto download:** Choose whether to download pictures to the smart device after shooting (remote shooting mode only).
- **Self-timer:** If **ON** is selected, the camera shutter will be released 2 s after you tap the shutter icon. The timer turns off automatically after the shutter is released.

Self-timer icon: Displayed when the self-timer is on.

Camera settings: Shutter speed, aperture, etc. Not displayed when device is in landscape orientation.

Optical zoom: Tap **T** to zoom in, **W** to zoom out.

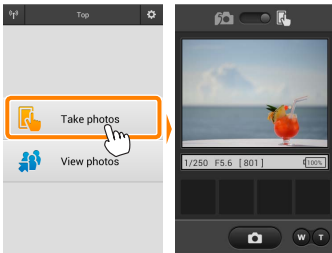
Thumbnail area: Downloaded pictures.

Downloading Photos as They Are Taken (Supported Cameras Only)

If the camera supports photo capture, the icon shown at right will appear in the shooting display. When photo capture is enabled by tapping the icon, photos will be downloaded to the smart device as they are taken.

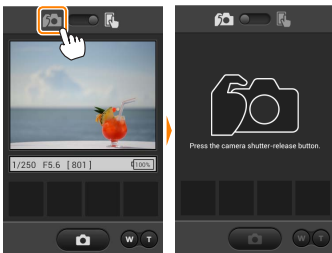


1 Tap Take photos.



2 Tap .

The dialog shown below at right will be displayed (page [83](#)).



3 Take photos.

Use the camera to frame and shoot photos. Photos are downloaded to the smart device after being saved to the camera memory card.



The Photo Capture Display

The photo capture display is shown below.



Mode selection: Tap  to select remote shooting mode (page [79](#)).

Thumbnail area: Downloaded pictures.

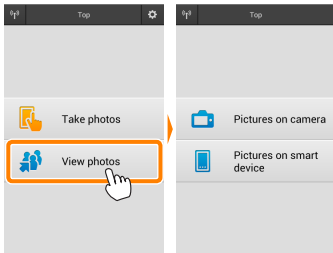
Viewing Photos

Tap **View photos** to view the pictures stored on the smart device. You can also view the pictures on the camera memory card and download selected images to the smart device.

Viewing Pictures

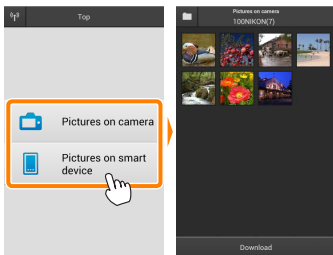
View the pictures in camera memory or on the smart device.

1 Tap **View photos**.



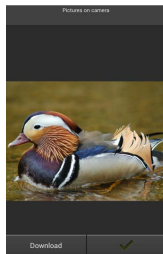
2 Choose a device.

Tap **Pictures on camera** to view the pictures on the camera memory card, **Pictures on smart device** to view the pictures stored on the smart device. The pictures will be displayed as small “thumbnail” images (in some cases, a folder list may be displayed; tap a folder to view the pictures it contains).



3 View pictures.

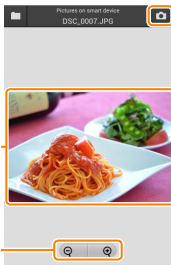
Tap a thumbnail to display the picture full frame. You can then swipe left or right to view additional pictures.



The Full-Frame Display

The full-frame display is shown below.

Tap picture to hide or view icons



Return to shooting mode (available only if display was accessed by tapping thumbnail in shooting display)

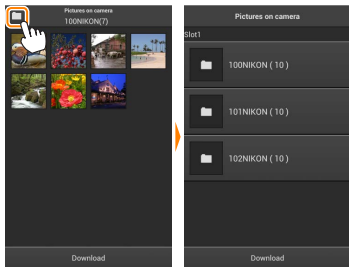
Zoom in or out

Movies

Movies can not be viewed using the Wireless Mobile Utility, but movies can be played back by tapping the movie or playback icon in the thumbnail list to display a list of movie apps and choosing an app from the list.

Folders

Downloaded pictures are stored in folders with names consisting of "C" (for new photos downloaded during shooting) or "D" (for existing pictures downloaded during playback) followed by the date, an underscore, and a 3-digit folder number. A new folder is created each time you launch the Wireless Mobile Utility and either capture new photos or download existing pictures. To view pictures in other folders, tap the folder icon at the top of the display and tap a folder to display its contents.

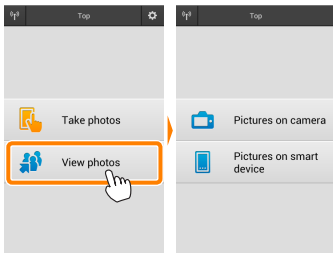


On the smart device, the path to folders created for new photos downloaded during shooting is `"/sdcard/Nikon_WU/Capture"`, while the path to those created for existing pictures downloaded during playback is `"/sdcard/Nikon_WU/Card"`.

Downloading Existing Pictures

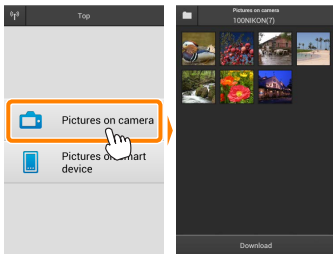
Download pictures from the camera memory card. Note that 3D images are downloaded as 2D JPEG images.

1 Tap View photos.



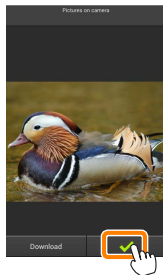
2 Tap Pictures on camera.

Tap Pictures on camera to view the pictures on the camera.

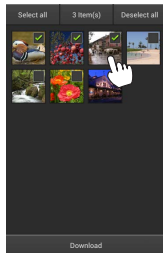


3 Select pictures for download.

Tap a thumbnail to display the picture full frame. You can then swipe left or right to display the desired picture and tap the check mark to select or deselect. Press the back button on the smart device to return to the thumbnail list.



Alternatively, you can select multiple pictures by touching and holding a thumbnail until check boxes are displayed at the top right corner of each picture and then tapping thumbnails to select or deselect. You can also tap **Select all** in the smart device menu to select all images or **Deselect all** to deselect all images.

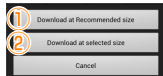


Folders

To select all images in a folder, tap the folder icon at the top of the display and then touch and hold the folder in the folder list.

4 Tap Download.

If only one picture is selected, you will be prompted to choose the size at which the picture will be copied to the smart device. Tap ① (**Download at [size]**) to download the picture at the size selected for **Image size** in the **Settings** menu (page 97), or ② (**Download at selected size**) to choose a size before download (page 97).



If multiple pictures are selected, a confirmation dialog will be displayed; tap **Download** to download the pictures at the size selected for **Image size** in the **Settings** menu (page 97).

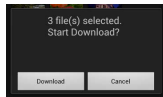
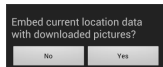


Image Size

Regardless of the size selected, pictures may sometimes be downloaded at their original size.

Location Data

The options shown at right will be displayed if **Settings > Embed location data > Pictures on camera** is enabled (page 97).



Dropped Connections

If the wireless connection is lost while a picture is being downloaded, the picture will not be saved to the smart device (connection loss may occur if, for example, the camera turns off during download). Any pictures downloaded before the connection was interrupted are unaffected.

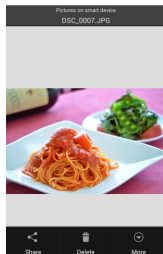
Sharing Pictures

Before sharing pictures, connect to a network with Internet access.

■ *Sharing Pictures One at a Time*

1 Display the smart device menu.

Display a picture full-frame and tap the menu button on the smart device to view menu options.



2 Tap Share.

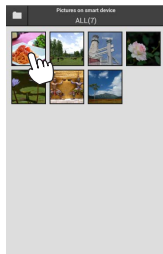
Tap **Share** and choose from a list of picture-sharing apps and functions (the specific contents of the list vary from device to device).



■ Sharing Multiple Pictures

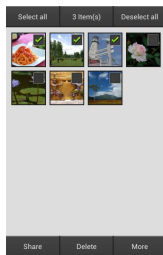
1 Display check boxes.

In the thumbnail list, touch and hold any of the pictures you want to share until a check mark is displayed in the top right corner and check boxes appear on the remaining images.



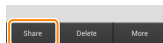
2 Select pictures.

Tap thumbnails to select or deselect. You can also tap **Select all** in the smart device menu to select all images or **Deselect all** to deselect all images.



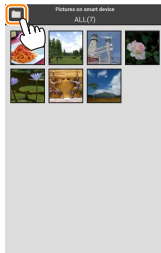
3 Tap Share.

Tap **Share** and choose from a list of picture-sharing apps and functions (the specific contents of the list vary from device to device).



Sharing Folders

To share all pictures in a folder, tap the folder icon at the top of the display to view folders, then touch and hold a folder to select all the pictures it contains. Selected pictures are indicated by check marks and can be shared by tapping **Share** as described in Step 3.



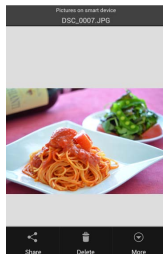
Deleting Pictures

Downloaded pictures can be deleted from the smart device one at a time or in groups. The Wireless Mobile Utility can not be used to delete pictures from the camera memory card.

■ *Deleting Pictures One at a Time*

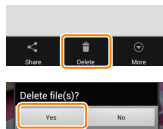
1 Display the smart device menu.

Display a picture full-frame and tap the menu button on the smart device to view menu options.



2 Tap Delete. Tap Delete.

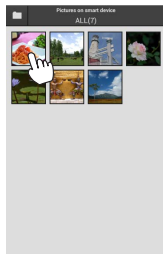
A confirmation dialog will be displayed; tap **Yes**.



Deleting Multiple Pictures

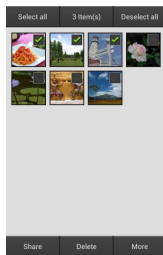
1 Display check boxes.

In the thumbnail list, touch and hold any of the pictures you want to delete until a check mark is displayed in the top right corner and check boxes appear on the remaining images.



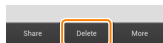
2 Select pictures.

Tap thumbnails to select or deselect. You can also tap **Select all** in the smart device menu to select all images or **Deselect all** to deselect all images.



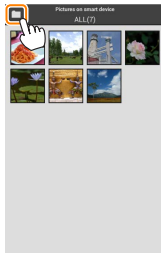
3 Tap Delete.

A confirmation dialog will be displayed; tap **Yes**.




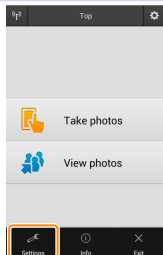
Deleting Folders

To delete all pictures in a folder, tap the folder icon at the top of the display to view folders, then touch and hold a folder to select all the pictures it contains. Selected pictures are indicated by check marks and can be deleted by tapping **Delete** as described in Step 3.



Wireless Mobile Utility Options

To access the options listed below, tap the  icon at the top right corner of the display or use the smart device menu in the Wireless Mobile Utility home display.



Settings

Option	Description
Synchronize clock	Choose whether to synchronize the camera clock with the smart device.
Battery options	Remote photography will end automatically when the camera or smart device battery reaches the selected level.
Thumbnails	Choose the size of the thumbnails in the playback display.
Embed location data	Choose whether to embed smart device location data in pictures not already containing location data provided by the camera. Note that devices not equipped with GPS or comparable location data functions may fail to supply the correct location.
Image size	When downloading multiple images, select Recommended size or VGA to copy images at sizes approximately equivalent to 1920 × 1080 or 640 × 480, respectively.
App auto launch	If ON is selected, the Wireless Mobile Utility will launch automatically when the smart device detects a signal from the camera.

Option	Description
Wireless Mobile Adapter settings	Adjust network settings for the wireless mobile adapter. Not available with cameras featuring built-in Wi-Fi.
SSID	Choose an SSID for the wireless mobile adapter. The smart device displays the SSID when you connect to the network manually.
Authentication/encryption	Choose the authentication method used for connection to the network.
Password	Enter a password. The password type is selected using Advanced settings > Password entry : choose ASCII for an 8- to 63-character alphanumeric password, HEX for a 64-digit hexadecimal password.
Channel	Choose the wireless channel used by the network.
Auto power-off delay	Choose the delay before the wireless mobile adapter enters sleep when there is no wireless connection.
Advanced settings	<ul style="list-style-type: none"> • WPS PIN: Set the wireless mobile adapter WPS PIN. • WPS mode: Select the adapter WPS mode. • Password entry: Choose the password type. • Sub-net mask: Enter a subnet mask. • DHCP server IP address: Enter the wireless mobile adapter IP address. • DHCP client IP address: Enter the smart device IP address.
Current settings	View current wireless mobile adapter settings.
Format settings	Tap Yes to restore default settings.
Language	Choose the language in which the user interface for the Wireless Mobile Utility is displayed.

Info

Option	Description
Camera	The name of the camera currently connected.
Wireless Mobile Adapter	View information about the wireless connection. The serial number and firmware version are displayed only if the camera is connected via the wireless mobile adapter.
Link speed	View the transmission rate.
Serial number	View the product serial number.
Firmware version	View the current firmware version.
App	Select About to view Wireless Mobile Utility version information, Check for updates to connect to the Google Play service and check for updates, or License Terms and Conditions to view the terms of use for this application.

Exit

Exit the Wireless Mobile Utility.

Trademark Information

Wi-Fi is a registered trademark of the Wi-Fi Alliance. GOOGLE PLAY is a trademark of Google Inc. All other trade names mentioned in this manual are the trademarks or registered trademarks of their respective holders.