

The Instructions of X9 PRO smart band

X9 PRO



Guidelines

1) Presentation and description of appearance of the product



2) The Instruction of Function

a. Motion steps

Calculate the number of moving steps, walking time, mileages as well as calories.

b. Sleep monitoring

Monitor the quality of sleep every day accurately, calculate the time length of deep sleep and light sleep.

c. Health measurement

Monitor current health information, including heart rate, oxygen, blood pressure accurately.

(Data are for reference only and not for medical use)

d. Alarm clock / message reminder

Alarm clock, phone, QQ, WeChat, SMS, sedentary reminder, anti-lost reminder

e. Remote control camera

In favor of remote camera for mobiles

f. Hang up phones

Press Bracelet touch button for a long time, you can hang up the phone.

3) The Instructions for Switching on/off the Tool

a. Press the touch button to boot the tool for a long time.

b. If you press for a long time, but fail to start, please make sure whether the battery is out of power or not.

c. If the battery is out of power, please use the charging line and then switch on

d. On the shutdown interface, press the touch button to shut down the tool for a long time.

4) APP Installation and Device Binding

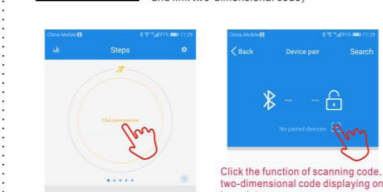
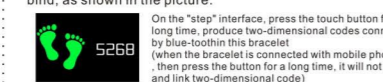
a. The requirements of mobile phone configuration: Android system 4.4 and above, IOS system 8.0 and above, Bluetooth version of wood BLE4.0 and above

b. Scan two-dimensional code below, download Android or IOS APP, then install them on the phone.

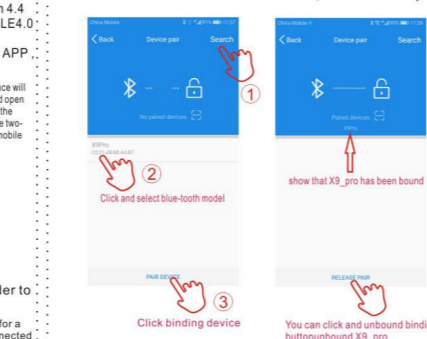


c. Device Bonded

Mode 1: Scan and connect two-dimensional codes in order to bind, as shown in the picture.



Mode 2: Search and link to blue-tooth model, as shown in the picture.



Note: When the blue-tooth icon on the bracelet ends is in a stationary state, which represents the fact that the blue-tooth has been connected. When the blue-tooth icon on the bracelet ends is in a blinking state, which represents the fact that the blue-tooth has not been connected.

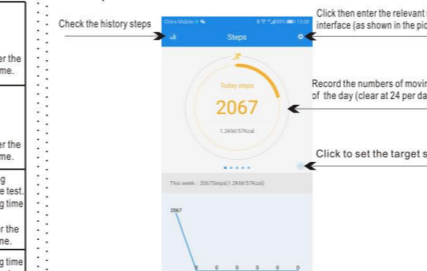
5) Function Icons and Operating Instructions of Bracelets

Main interfacetime, week, battery, blue-tooth status, step numbers, heart rate		Press the button, then enter the next interface for a short time.
Step interface: display the number of steps of the day.		Press the button for a long time, connect to the two-dimensional code interface. Press the button, then enter the next interface for a short time.

6) The Description of APP Interface

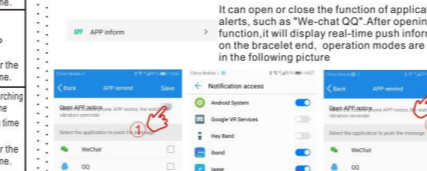
The calorie interface: shows the amount of exercise calories of the day.		Press the button, then enter the next interface for a short time.
The mileage interface: shows the mileage of the day.		Press the button, then enter the next interface for a short time.
Icon interface of the heart rate: displays the heart rate measurements.		Press the button 2S for a long time, then enter the heart rate test. Press the button 2S for a long time again, then exit the test. Press the button, then enter the next interface for a short time.
The blood pressure icon interface: displays diastolic pressure values and systolic blood pressure values.		Press the button 2S for a long time to enter the blood pressure test. Press the button 2S for a long time again to exit the test. Press the button, then enter the next interface for a short time.
The sleep icon interface: displays sleeping time the night before		Press the button, then enter the next interface for a short time.
The alarm clock icon: displays the alarm clock time		Set the alarm time by APP. Press the button, then enter the next interface for a short time.
Look for the phone icon:		Press the button 2S to start searching for your cell phone for a long time. Press the button 2S for a long time again to exit the search. Press the button, then enter the next interface for a short time.

a. Step Interface

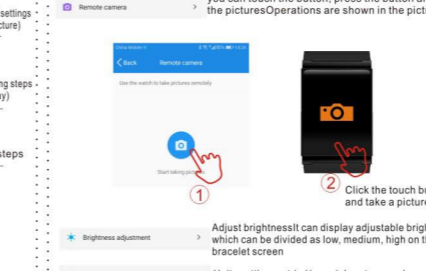


User information (gender, age, height, weight). Please fill in the details carefully by users.

Device binding refer to the APP installation and device bonded instructions please. You can open or close related functions such as "calls reminder" after opening the function, it will remind you that there is a call from the bracelet end. It can open or close the function of application alerts, such as "We-chat QQ". After opening the function, it will display real-time push information on the bracelet end, operation modes are shown in the following picture



b. Sleeping interface

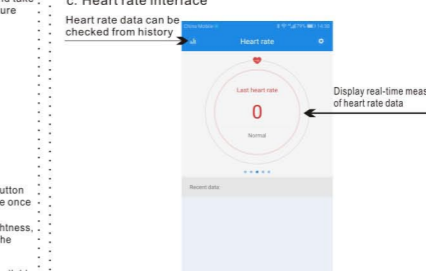


Brightness adjustment: Adjust brightness! It can display adjustable brightness, which can be divided as low, medium, high on the bracelet screen

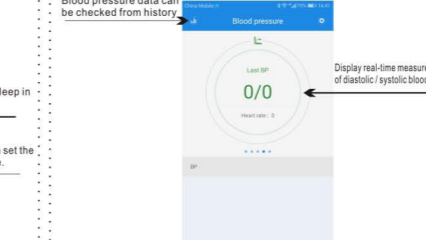
Unit setting: Units setting metric / imperial system can be available

Time format: Time format 12 hour system, /24 hour system can be chosen from the range

c. Heart rate interface



Blood pressure data can be checked from history



d. Blood pressure interface

7) Precautions for use

- Theoretically the wristband supports mobile phones or tablet system IOS 7.0 system or above and android system 4.3 version or above with bluetooth 4.0, but not all mobile device models are available. please refer to the actual.
- This prolicate elements, please do not throw it and strie it with hard objects, otherwise the machine surface will be scratched or hardware be damaged.
- Dot not disassemble or transform the product, otherwise problems will occur or product quality guarantee be hampered.
- It is forbidden to throw the product into fire for fear of explosion.
- Note in wearing: if you are sensitive or wear the wristband too tight, you might feel uncomfortable.
- Please wipe the wristband if it is wet prior to charging, otherwise failure will be caused and the charging touch points corroded.
- Under the strong static environment, failures might occur, e. g. no display or abnormal display etc. Do not use it in high pressure or high magnetic environments to avoid electrostatic interference.
- It is waerproof only when the lens and enclosure are intact. water tightness may be ineffective resultde from violent dismantlement or installation.
- This product is waterproof for cold water to hot water may lead to fog appears in the lenses
- The battery life time by using environment and use pattern changes

are designed to provide reasonable protection against harmful interference in a residential installation. This equipment generates uses and can radiate radio frequency energy and, if not installed and used in accordance with the instructions, may cause harmful interference to radio communications. However, there is no guarantee that interference will not occur in a particular installation. If this equipment does cause harmful interference to radio or television reception, which can be determined by turning the equipment off and on, the user is encouraged to try to correct the interference by one or more of the following measures:

- Reorient or relocate the receiving antenna.
- Increase the separation between the equipment and receiver.
- Connect the equipment into an outlet on a circuit different from that to which the receiver is connected.
- Consult the dealer or an experienced radio/TV technician for help

This device complies with part 15 of the FCC rules. Operation is subject to the following two conditions

- (1) this device may not cause harmful interference, and
- (2) this device must accept any interference received, including interference that may cause undesired operation.

Disclaimer:
Warning: This product is not a medical device, bracelet and its application should not be used for diagnosis, treatment, Or disease, illness prevention and other acts, to change the movement, sleep and other habits, be sure to first Qualified professional medical personnel consultation, so as not to cause serious casualties. I remain in the company do not do pre-pass Know the power to modify and improve any of the functions described in this manual The company to keep the content of the product to update the right, all content, please prevail in kind!

Attach:

About Battery
Battery Type: Li-polymer battery
Capacity: 105mAh
Voltage: 3.7V
Power: 0.37WH

CE RoHS Made in china

FCC Statement
Changes or modifications not expressly approved by the party responsible for compliance could void the user's authority to operate the equipment. This equipment has been tested and found to comply with the limits for a Class B digital device, pursuant to Part 15 of the FCC Rules. These limits

Please consult the instruction manual before your usage.