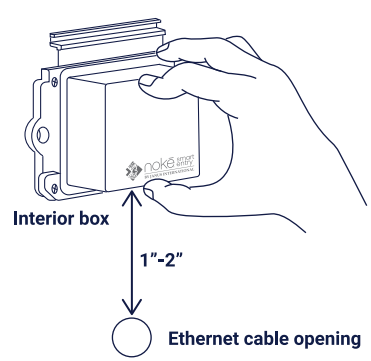
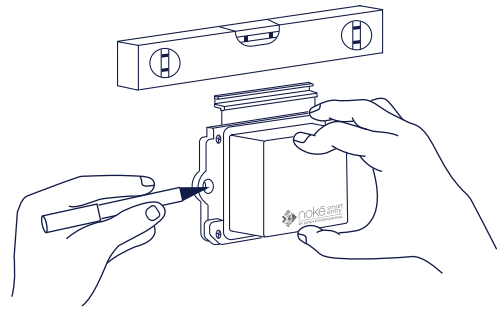


## POSITIONING GATEWAY INTERIOR BOX

**A:** Position the Gateway interior box on the wall 1 inch to 2 inches above the ethernet cable opening.

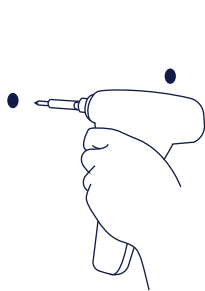


**B:** Use a level to ensure the Gateway interior box is straight and then mark the screw holes.

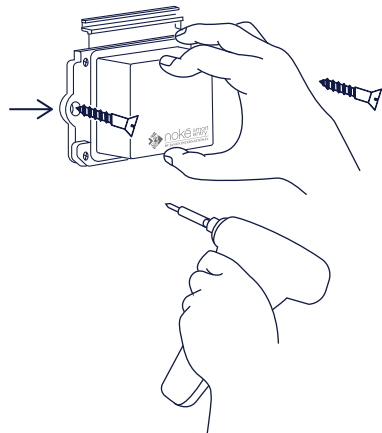


## MOUNTING GATEWAY INTERIOR BOX

**A:** Remove box and drill holes.

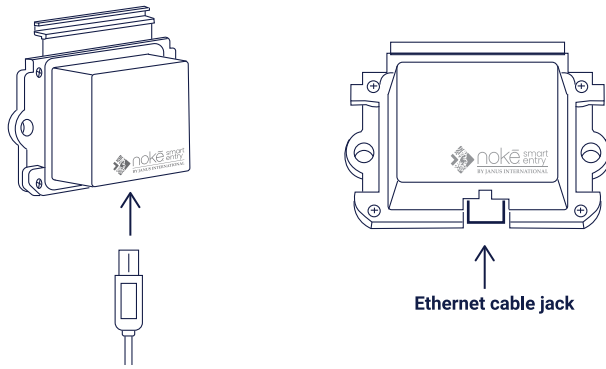


**B:** Place the Gateway interior box back over the drilled holes and secure box to wall with screws.



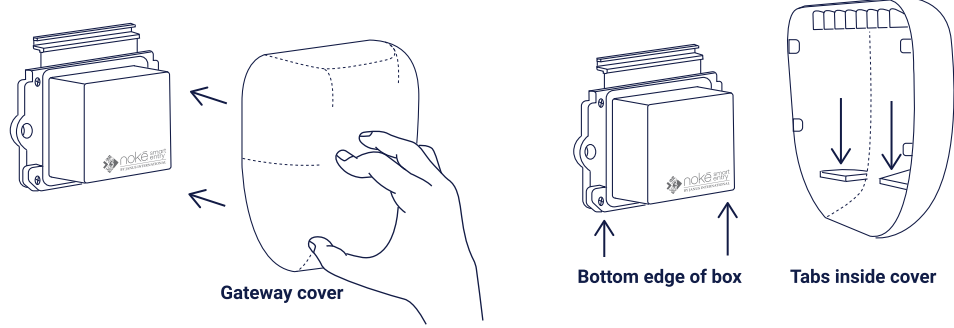
## ATTACH ETHERNET CABLE

**A:** Insert the ethernet cable into the ethernet jack on the bottom of the box.

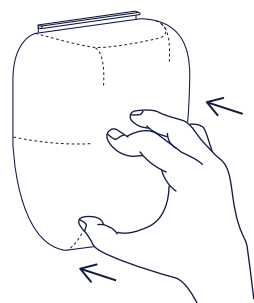


## INSTALLING GATEWAY COVER

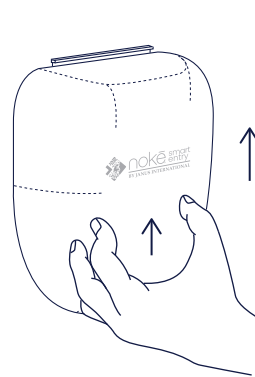
**A:** Bring the cover to the gateway and align the large tabs on the inside of the cover with the bottom edge of the interior box.



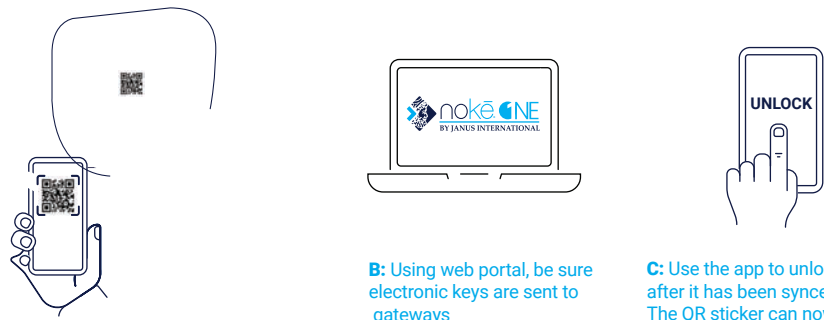
**B:** Press in until you feel the interior box resting on the tabs.



**C:** Now, slide cover up until you hear and feel the locking feature connect and lock in place.



## ADDING NOKĒ GATEWAY TO SITE



**A:** Use the Nokē Smart-Entry App to scan QR code on the device and add device to the Smart-Entry system

**B:** Using web portal, be sure electronic keys are sent to gateways

**C:** Use the app to unlock other device after it has been synced to the system. The QR sticker can now be removed

## SUPPORT

If you need support, please call 1(833) 257-0240

## FCC Compliance Statement

This equipment has been tested and found to comply with the limits for a Class B digital device, pursuant to part 15 of the FCC rules. These limits are designed to provide reasonable protection against harmful interference in a residential installation.

This equipment generates, uses and can radiate radio frequency energy and, if not installed and used in accordance with the instructions, may cause harmful interference to radio communications. However, there is no guarantee that interference will not occur in a particular installation. If this equipment does cause harmful interference to radio or television reception, which can be determined by turning the equipment off and on, the user is encouraged to try to correct the interference by one or more of the following measures:

- Reorient or relocate the receiving antenna.
- Increase the separation between the equipment and receiver.
- Connect the equipment into an outlet on a circuit different from that to which the receiver is connected.
- Consult the dealer or an experienced radio/TV technician for help.

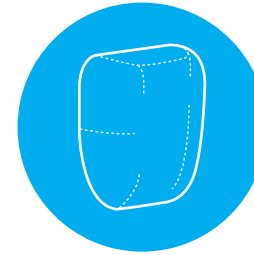
To assure continued compliance, any changes or modifications not expressly approved by the party responsible for compliance could void the user's authority to operate this equipment.

This equipment complies with Part 15 of the FCC Rules.  
Operation is subject to the following two conditions:

1. This device may not cause harmful interference, and
2. This device must accept any interference received, including interference that may cause undesired operation.

RF Warning Statement:

This equipment should be installed and operated with a minimum distance of 20CM between the radiator and your body.



## INSTALLATION GUIDE

Nokē Gateway 100



Nokē Inc. hereby declares that this unit complies with the fundamental requirements and relevant regulations set forth by Guideline 1999/5/EU. The declaration of conformity can be found at [noken.com/ce](http://noken.com/ce) or requested by e-mail: [support@noken.com](mailto:support@noken.com)

©2021 Nokē®