



物 联 锁 | 锁 全 球

Smart Lock

LYS

Instruction Manual

www.rocolock.com

1 Diagram



Name	Smart Lock	Model	LYS
Connection	Bluetooth4.0	Active time	1~2s
Material	Alloy+ABS/Silicon	Power	4×220mA button battery
Size	356/256×169×36mm	Net weight	0.7Kg
Application length	100~300mm	Operation condition	-25℃~+75℃
Waterproof	IP65	Vibration alarm	80db
Standby	24 months	On-off	98,000 time
Application	Bicycle, Motor bike, Electronic bike, Shop, Office etc.		

2 APP Installcation

Device: Andoid4.3 or above, ios 4s or above.
Bluebooth: BT 4.0.

1. Scan to download.



IOS

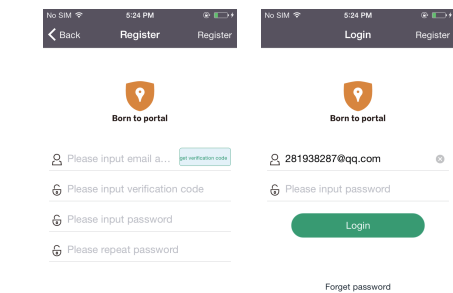


Android

2. Search “NOKELOCK” from Apple or Android Store.

3. Visit www.nokelock.com to download.

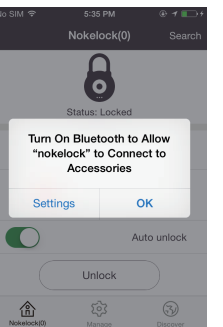
3 Regist Interface



Login: register by email to get verification code for login.

Note: network is necessary for logging on.

4 Bluetooth Approval



Turn on Bluetooth to allow "Nokelock" to connect to accessories.

Contact us

E mail: info@rocolock.com

Website: www.rocolock.com



Website

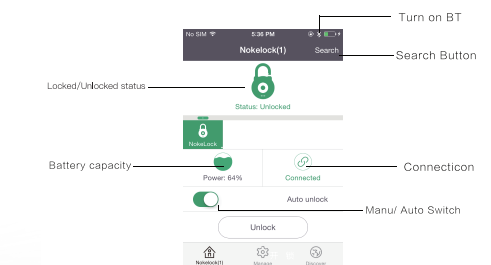
5 Search Device



1. Click "+/ search" to add device;
2. Press the lock's activation button, red light blinks – Bind now– input original password "000000" and the new one – confirm.

Note:
• Success to bind device if all info is inputted in 20s.
• Red light: blinks 5 times – activated.
• Blue light: blinks 5 times – connected and unlocked successfully.

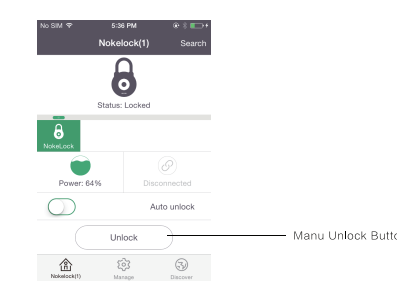
6 Auto Unlock



Press activation button of Smart Lock → Red light is blinking → Connect and power icons turn green → Smart lock is unlocked while blue light blinks and “clicking” sounds, then just pull out the cylinder.

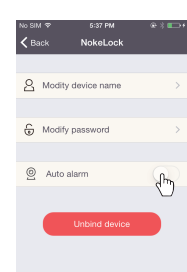
Note: Setup interface must be operated at connecting status, other wise relevant settings will not be responded.
Manual unlock is default, resetting is available after login.

7 Manual Unlock



Press activation button of Smart Lock → Red light is blinking → Connect and power icons turn green → Press Unlock Button → Smart lock is unlocked while blue light blinks and “clicking” sounds, then just pull out the cylinder.

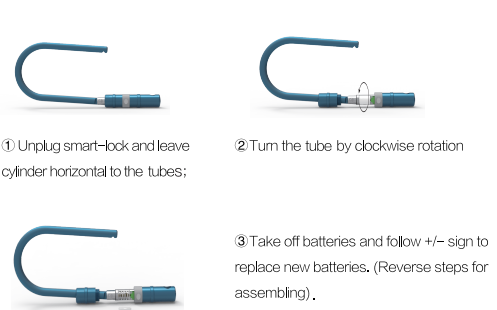
8 Manage Interface



1. Modify device name: max input 1 ~ 7 characters.
2. Modify unlock password: 6-digit is valid.
3. Alarm setting: turn on/off alarm is available.
4. Unbind device: note that all record will be removed.
5. Exit: click to log out.

Note: above operation is workable when both devices are bond and connected.

9 Battery Replacement



1. 4 x CR2032 operates around 2000 times.
2. Power <20%, display icon turns red and kindly replace the batteries timely.

FAQ

- Software Question:
1. How to know battery capacity?
Battery usage is shown up on home page. While battery capacity is under 20%, please replace new batteries timely (CR2032).
2. Can smart lock operate by more than one user?
Yes. Just share your password with others.
3. Adding device is required every time for login?
No. APP will keep record of all devices added that before.
4. Forget to unplug device after unlocking by APP, smart lock will leave open?
No. It will lock automatically if you don't pull out the cylinder after blue light blinks 10 times.
- Structural Question:
1. APP shows unlocked successfully and blue light blinks, but can't not pull out the cylinder?
Please don't tighten the cylinder, or it will damp with the bolt. So please stretch back and forth to make it work and try again.
2. Hard to pull out the cylinder?
Please pull it slowly at between the cylinder and bolt.
3. Is it waterproof?
It is IP 65, and we suggest not to use and soak in water /rain, since PCB inside (cover with insulation paste) , please keep dry timely to avoid rusting/bolt if happens.
- Other Question:
Please feel free to email: info@rocolock.com.
Thanks for your always support!
- Connection Question:
1. What's the best distance for both devices?
The signal is strong within 3M.
2. APP no response?
The phone is out of memory or too many programs run in background, so close some and exit to login again.

FCC Statement

Changes or modifications not expressly approved by the party responsible for compliance could void the user's authority to operate the equipment.
This equipment has been tested and found to comply with the limits for a Class B digital device, pursuant to Part 15 of the FCC Rules. These limits are designed to provide reasonable protection against harmful interference in a residential installation. This equipment generates uses and can radiate radio frequency energy and, if not installed and used in accordance with the instructions, may cause harmful interference to radio communications. However, there is no guarantee that interference will not occur in a particular installation. If this equipment does cause harmful interference to radio or television reception, which can be determined by turning the equipment off and on, the user is encouraged to try to correct the interference by one or more of the following measures:
-- Reorient or relocate the receiving antenna.
-- Increase the separation between the equipment and receiver.
-- Connect the equipment into an outlet on a circuit different from that to which the receiver is connected.
-- Consult the dealer or an experienced radio/TV technician for help

This device complies with part 15 of the FCC rules. Operation is subject to the following two conditions (1) this device may not cause harmful interference, and (2) this device must accept any interference received, including interference that may cause undesired operation.