

**UBH-2010**



**BLUETOOTH  
HEADSET**

# Contents

<b>Introduction</b>	<b>2</b>
<b>UBH-2010 Bluetooth Wireless Technology Headset Overview</b>	<b>3</b>
<b>Quick Guide</b>	<b>4</b>
● Charging the Headset	
● Wearing the Headset	
● Check the Headset buttons	
● Switching the Headset On/Off	
● Pairing the Headset	
● Using the Headset	
● Answering a Call	
● Ending a Call	
● Rejecting a Call	
● Making a Call	
● Redialing the Last Number	
● Volume Control	
● Transferring a Call between Headset and Mobile Phone	
● Mute/Un-mute	
● MSN/Skype chat	
● Low Battery	
<b>Troubleshooting</b>	<b>11</b>
<b>Additional information</b>	<b>12</b>
<b>Warranty Card</b>	<b>15</b>
<b>Declaration of Conformity</b>	<b>29</b>

## Introduction

The UBH-2010 Bluetooth Wireless Technology Headset is a Bluetooth device developed with Bluetooth technology, which can connect to other Bluetooth devices such as mobile phone , PDA, or notebook computer (with audio gate way profile supported) wirelessly to attain voice transferred purpose within a range of 10 meters.

### Introduction of Bluetooth wireless Technology

Bluetooth is a short-range wireless communication technology. The Bluetooth wireless technology makes it possible to connect any compatible portable and stationary communications device without using cables. The technology is based on a

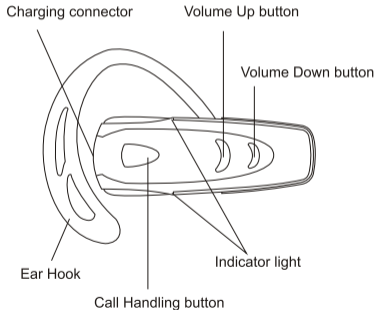
radio link that offers fast and reliable transmission of voice and data information. Bluetooth refers to a worldwide standard designed to operate in the internationally recognized ISM (Industrial Scientific and Medical) frequency band. Within the ISM band (2.4GHz~2.485GHz), Bluetooth transmissions hop between 79 separate frequencies 1,600 times every second, and with a communication range of about 10 meters.

### Box Content

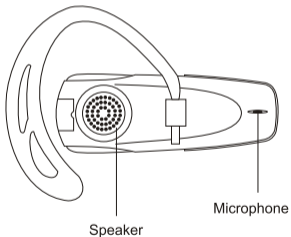
- ⊙ UBH-2010 Bluetooth Wireless Technology Headset
- ⊙ USB Charger
- ⊙ Headset hook-ring
- ⊙ Ear cushion
- ⊙ User Manual
- ⊙ Travel charger(optional)

# UBH-2010 Bluetooth Wireless Technology Headset Overview

**Front**



**Back**



## Quick Guide

Before you start using the headset with mobile phone or other device at first time, you should:

- Ⓞ Charge the headset battery.
- Ⓞ Pair the headset with a device.

### Charging the Headset

The UBH-2010 Bluetooth Wireless Technology Headset embeds with a rechargeable Li-polymer battery. For first time useage, it takes 2 hours to fully charge the battery. Afterwards, it will take about 1.5 hours to fully recharge the battery. With the battery fully charged, the talk time will be 6 hours, and the stand-by time will be up to 130 hours.

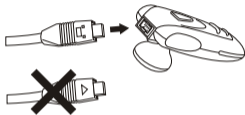
1. Connect the USB A Type connector of the Charge line into a computer USB interface.
2. Connect the other connector into the UBH-2010 Bluetooth Wireless Technology Headset. During charging,

the indicator light shows a steady blue light if the UBH-2010 Bluetooth Wireless Technology Headset is turned off, or flashes blue if the UBH-2010 Bluetooth Wireless Technology Headset is turned on.

3. When the battery is fully charged, the indicator shows a steady red light if the UBH-2010 Bluetooth Wireless Technology Headset is turned off, or a flashing blue light and steady red light if the UBH-2010 Bluetooth Wireless Technology Headset is turned on.

### To charge the battery

Connect the USB A Type connector of the charge line into a computer USB interface and connect the other connector into the UBH-2010.



**Note:** Please see figure

### To disconnect the charge line

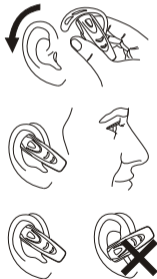
Pull the charge line plug parallel to remove it.



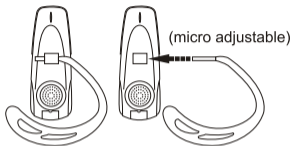
## Wearing the Headset

### Putting on the Headset

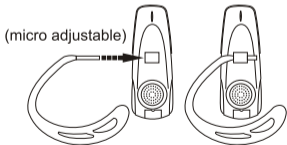
1. Put on the headset with the ear hook behind your ear.
2. Make sure the microphone is pointing towards your mouth.



### To adjust the ear hook for right-ear use



### To adjust the ear hook for left-ear use



### Check the Headset buttons

Call Handling Button: Power on / Power off /  
Answer calls / End calls / Pairing

Volume Up Button:  
increase the speaker volume.

Volume Down Button:  
decrease the Speaker volume.



### Switching the Headset On/Off

#### To switch the headset on

1. Press the Call Handling button for about 5 seconds until you hear a low tone followed by a high tone. The LED indicator flashes blue four times.
2. The headset switches on and enters standby mode. The LED indicator continuously flashes blue every 3 seconds.

### To switch the headset off

1. Press the Call Handling button for about 2 second until you hear a high tone followed by a low tone. The LED indicator flashes red four times.
2. The headset switches off and the LED indicator no longer blinks.

### Pairing the Headset

Before using the headset, you must first pair it with a Bluetooth wireless technology enabled device, such as a Bluetooth mobile phone.

Pairing is necessary for two Bluetooth devices to connect each other wirelessly. After creating a paired link, you do not need to repeat the pairing process and the headset automatically links to the mobile phone when both devices are switched on. Pairing must be performed every time you want to use the headset with a different Bluetooth mobile phone or other Bluetooth wireless technology

enabled devices. The headset can be paired simultaneously with up to 7 mobile phones.

To initiate pairing between the headset and a Bluetooth mobile phone in close proximity:

1. Please turn off the headset.
2. Make certain the mobile phone is switched on.
3. Press the Call Handling button to switch on the headset, and keep the Call Handling button pressed for 7 seconds until the LED indicator alternates between blue and red. The headset is now ready for pairing with the mobile phone.
4. Perform a device discovery from the mobile phone. ( For details on device discovery, please consult your phone's user's guide. )
5. Once the mobile phone discovers the headset, the text **UBH-2010** appears on the phone's screen.
6. Follow the phone instructions to accept pairing. When prompted to enter the passkey,



Enter the number : **0000**.

7. If time runs out after 60 seconds and the pairing fails, you will have to repeat the steps above. You can view the status from the phone's screen.
8. On completing pairing, the phone's screen will notify you that the pairing was successful. The LED indicator continuously flashes blue, and the headset goes into standby mode.
9. You can now make and answer calls through the headset.

## Using the Headset

Before using the headset, make sure that (1) the headset is switched on and connected to a paired Bluetooth mobile phone; (2) the headset is within 10 meters of the phone; and (3) the phone's Bluetooth feature is on (see your phone's user's guide).

**Note:** The headset supports both Headset and

Hands-Free profiles. Some mobile phones don't support all functions listed below. Please consult your phone's user's guide.

## Answering a Call

When an incoming call comes, the headset rings and the LED indicator flashes blue at a 3-second interval. To receive the call from the headset, press the Call Handling button once. You can also answer the call by using your phone in the normal way. Please note that if the mobile phone rings first, wait until you hear a ring tone from the headset, and then press the Call Handling button to answer the call.

## Ending a Call

To end a call, press the Call Handling button once on the headset or press the phone's END key. The headset returns to standby mode.

## Rejecting a Call

When a call comes and you do not want to answer it, you can press the Call Handling button for 2 seconds to reject the call.

## Making a Call

You can make a call through:

### Voice activation

To use voice activation, the mobile phone must support voice dialing. For details on voice dialing, please see your phone's user's guide.

1. Press the Call Handling button once on your headset.
2. After a short tone sounds, speak the name of the person you wish to connect (if he or she has a voice tag in your phone).
3. The phone automatically dials the number. You can see the details of the call from the phone's screen.

### Dialing a phone number from your mobile phone

1. Dial the phone number from the mobile phone's keypad.
2. Press the key to send the call from your phone.
3. The call automatically transfers to the Headset.

## Redialing the Last Number

To redial the last phone number, press either the Volume Up button or the Volume Down button for 3 seconds.

## Volume Control

During a call, you can adjust the headset speaker volume. An audio tone is played for each volume up and volume down step.

To increase the volume, press the Volume Up button step by step repeatedly until you reach the desired level. To decrease the volume,