

# Contents

---

## **Desktop CPEi 150 User Guide**

Overview . . . . .	2
Powerful Features in a Single Unit . . . . .	4
Front of CPE . . . . .	5
Bottom Panel . . . . .	6
Operating Information . . . . .	7
Overview . . . . .	8
Before You Begin . . . . .	9
Easy Setup . . . . .	10
Before you Begin Configuration . . . . .	11
User Interface Overview	12
Logging In to the CPE . . . . .	15

## **Setup Wizard and Authentication**

Step 1 - Change Password	16
Step 2 - Device Time . . . . .	17
Step 3 - WiMAX Security	17

## **Basic Configuration**

Personalize Menu . . . . .	19
Internet Menu . . . . .	23
Status Menu . . . . .	28

## **Advanced Configuration**

Port Forwarding Menu . . . . .	29
Local Address Menu . . . . .	32
Control Panel . . . . .	37

<b>Configuring TCP/IP</b>	
Configuring TCP/IP in Windows 2000 . . . . .	40
Configuring TCP/IP in Windows XP. . . . .	44
<b>Troubleshooting</b>	
Power LED is Off. . . . .	49
A Computer Cannot Log On to the CPE . . . . .	49
Cannot Connect to the Internet . . . . .	49
Additional Troubleshooting Help. . .	49
<b>Important Safety and Legal Information</b>	
Disposal of Motorola Equipment in EU Countries . . . . .	54
Disposal of Motorola Networks Equipment in Non-EU countries. . . . .	55
<b>CMM Disclosure</b>	
<b>Copyrights and Trademarks</b>	
Notice . . . . .	58
Copyrights . . . . .	58
Usage and Disclosure Restrictions. . . . .	59

# Desktop CPEi 150 User Guide

---

## Overview

Thank you for purchasing the Motorola CPE Indoor (CPEi) 150 desktop device. The Desktop CPE allows you to connect to the wireless world easily and seamlessly without complicated installation and setup procedures.

The Desktop CPE device provides the user:

- Convenience — with easy plug and play functionality. Flexible connectivity. Compact design.
- Performance — dual antennas supply diversity technology. Best in Class Radio Performance. Reliable indoor coverage. High throughput.
- Control — remote management capability allows easy detection and authentication once the unit is setup. Robust security.

#### CPEi 150 Unit



The features and the physical appearance of your Desktop CPEi device may differ slightly from the illustration. This illustration represents the model with internal antennas.

This product is subject to change. Not all features described in this WiMAX CPEi150 User's Guide are available on all models.

For the most recent documentation, visit the Product Documentation page on [www.motorola.com](http://www.motorola.com).

## Powerful Features in a Single Unit

The CPE device provides the following features:

- WiMAX Authentication
- WAN DHCP Client
- LAN DHCP Server
- Router Functions
- Firewall Protection
- Port Forwarding

## Front of CPE

The CPE unit contains an LED indicator at the top of the unit. The LEDs provide the status of the unit and signal strength for easy adjustment during setup.

### LED Indicator Interface

Power Status

The LEDs are:

- On — power to the CPE is on.
- Off — power to the CPE is off.

Signal Strength

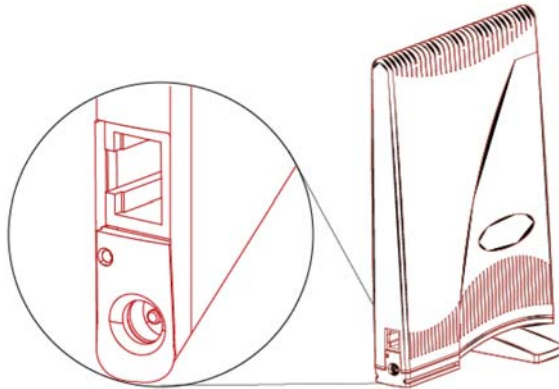
- If all LEDs on the bar are lit, full signal is being received.
- If all LEDs are off, no signal is being received.
- LEDs will display a chase pattern when the device is attempting to locate and connect to the network.

**Note:** There is no reset button on this CPE unit. If you want to reset the CPE, simply pull out the power cord and plug it in again.

## Bottom Panel

The bottom panel of the unit contains the Ethernet Port, the Power Connection Port, and a LAN Port LED.

CPEi 150 Bottom Panel



### Port Descriptions

<b>Back Panel Ports</b>	<b>Description</b>
Ethernet	Ethernet Port
Power	AC Power Connector
LAN Port	The LED is: <ul style="list-style-type: none"><li>• On - LAN Port is connected.</li><li>• Off - LAN Port is not connected.</li></ul>

## Operating Information

Operating temperature for this unit is 0-40C (32-104F).

AC Power Rating for the CPE 150 is:

- 110V ~240, 1A



# Installation

---

## Overview

To install the Desktop CPEi 150 Series, you need to review the following sections:

- Before You Begin
- Easy Setup

## Before You Begin

Before you begin installation, check that you have received the following items with your CPE:

In the box with your CPE you should have:

<b>Item</b>	<b>Description</b>
AC Adapter	Power adapter.
Power Cord	Power cord that connects to the AC Adapter to connect the unit to an AC electrical outlet.
Ethernet Cable	Cable to connect the Internet port on your CPE to your PC or laptop computer
Quick Start Guide	Guide to demonstrate the setup and basic IP configuration

In addition, you will also need:

- A computer

## Easy Setup

The CPE is easily set up in your home. Basic installation equipment needed are the power adapter and cord, Ethernet cable, a PC or laptop computer and the CPE device.

Perform the following tasks before attaching the power cord or powering up the unit:

- Place the CPE vertically on a flat surface.
- Connect one end of the Ethernet cable to the Ethernet port of the CPE (1).
- Connect the other end of the same Ethernet cable to an Ethernet port on your PC or laptop computer.
- Connect the power cord and the power adapter together.
- connect the power adapter to the power connector on the bottom of the unit(2).
- Plug the power adapter into an AC power outlet. The CPE will automatically turn on.

# Procedure to Log into the CPE

## Before you Begin Configuration

Some settings on your computer must be verified or changed to ensure that your computer configuration can support the Desktop CPE.

- Confirm that your service provider has registered your unit.
- Ensure your internet browser supports JavaScript.
- Verify that the IP addresses and DNS settings are automatically generated in your Local Area connection of your Internet Protocol (TCP/IP) properties. Refer to the chapter titled “Configuring TCP/IP” for information on how to do this.
- Ensure you know which protocol you will need to enter in the Setup Wizard procedure. This will either be EAP-TLS or EAP-TTLS. If EAP-TTLS is to be used, your service provider will provide you a Username and Password.

## User Interface Overview

A web based Graphical User Interface (GUI) is used to configure the features of the CPE.

Main Menu Sample



There are six main menus in the GUI:

### Menu Descriptions

Menu	Description
Personalize	Use this menu to set up your password, device time and device name. You can also abandon your personal settings by clicking “ <b>Restore Factory Settings</b> ”.
Internet	Use this menu to configure internet connection settings, including authentication, protocol, firewall and dynamic DNS.

Status	Use this menu to display network status, including WiMAX, Internet, LAN and Device Information
Port Forwarding	Use this menu to enable Universal Plug and Play (UPnP) Internet Gateway Device (IGD) profile to allow certain Windows applications to setup the port forwarding rule dynamically when NAT is enabled on this device.
Local Access	Use this menu to display the IP Address and netmask address in the local network.
Control Panel	Use this menu to manage the device software.

The following buttons appear at the bottom of each configuration page:

### Button Descriptions

Button	Function
Apply	Saves your changes. If you restart your CPE without saving your changes, all changes are lost. After the device restarts, the last saved configuration is used.
Undo	Clears your changes on the current page and returns to the main menu. Once you click Apply, the Undo button will NOT clear your changes.
Next	Confirms the current setting and moves on to the next screen

Back	Allows you to go back a screen to revise the previous setting.
Refresh	Updates to the new configurations and settings.
Auto Refresh	Updates automatically without needing you to refresh manually.
Wizard	Starts Setup Wizard manually if your CPE did not run the setup program automatically.
Start Sign	Restart CPE.

**Note:** Illustrations in this manual containing an image of what you see on your computer screen are for reference purposes only. Values shown in the illustrations in this manual may be different from what you see on your computer screen.

## Logging In to the CPE

Use the following procedure to log into the Desktop CPE.

- 1 On a computer that is connected to the CPE, open a web browser.
- 2 In the Address or Location field, type **http://mywimax.** and press **ENTER** to display the login screen.

**Note:** You must include the period (.) after http://mywimax. in order to access the login screen.

- 3 The Welcome to Motorola WiMAX CPE screen will be displayed and will prompt you for a password.

Login Screen



- 4 In the **Password** field, type the password (default is **motorola**).
- 5 Click **Login**.
- 6 First time users will see a pop-up box that states: “The Wizard application will guide you through for the first time configuration. Click OK button to continue.”
- 7 Click the **OK** button to launch the wizard application.



# Setup Wizard and Authentication

---

## Step 1 - Change Password

Once you have launched the setup wizard, you will be prompted to change your password. Motorola recommends using a password to protect your home network and CPE device. Passwords are case-sensitive.

To change your password:

- Ensure the “Enable Login Password Protection” box is checked.
- Enter a New Login Password in the box. Passwords can be no more than 20 characters in length.
- Re-type your new password in the Confirm New Login Password box.
- Click **Next**.

## Step 2 - Device Time

This screen allows you to set the time zone and to enable Daylight Savings Time (when applicable) for your location.

- Select the appropriate time zone for your location from the drop down box.
- Check the box called “Auto Adjust for Daylight Savings Time” if you live in a region that observes Daylight Savings Time (this box is checked by default).
- Click the **Next** button.

## Step 3 - WiMAX Security

The WiMAX Security tab will contain your authentication method. Check with your service provider to determine if they require a user name and password for authentication purposes.

- If the Authentication Method is EAP-TLS, no User Name and Password are required. Enter the Realm information supplied by your service provider. Click the **Next** button.
- If the Authentication Method is EAP-TTLS/MS-CHAPv2, you will have to enter a User Name and Password and Realm information supplied by your Service Provider. Once you have entered the User Name/Password/Realm information, click the **Next** button.
- If you are unsure of the Authentication Method, select EAP-TLS (this is the default) and click the **Next** button.

Click the **Apply** button when finished.

Congratulations! You have now completed the setup of your WiMAX connection.

Click **OK** on the Congratulations! dialog box.

A status screen will appear showing Network status. When your CPE successfully connects to the Internet, you will see actual linking status and statistics.

Status Screen



## Basic Configuration

---

Once the CPE set up has been completed, you can login to your CPE from any computer on your home network by typing the device name in the address bar. The default device name is mywimax.

This section describes the PERSONALIZE, INTERNET, and STATUS Menus that are available.

### Personalize Menu

The Personalize menu provides the following tabs:

- Password
- Device Time
- Device Name
- Restore Factory Settings

## Personalize Menu



## Password Tab

The password tab allows you to enable/disable password protection. You can also change your password here. Be sure to click the **Apply** button when finished.

Field or Button	Description
Enable Login Password Protection	Checking this box will require login password protection.
New Login Password	Enter your new password here. Maximum 20 characters. Passwords are case-sensitive.
Confirm New Login Password	Re-enter your new password here, exactly as entered above.

## Device Time Tab

The Device Time tab allows you to establish the time zone for your location. It also allows you to automatically adjust for Daylight Savings Time if necessary. Be sure to click the **Apply** button when finished.

Field or Button	Description
Current Local Time	Shows the current local date and time.
Time Zone	Select your local time zone from the drop down box.
Auto Adjust for Daylight Saving Time	Check this box if your location observes Daylight Savings Time. (Default is checked)

## Device Name Tab

The Device Name tab allows you to re-name your CPE device. This is the Device Name you enter on an internet browser address bar to access your CPE device. Be sure to click the **Apply** button when finished.

Field or Button	Description
New Device Name	Enter the new name for the CPE device. Maximum 20 characters.

## Restore Factory Settings Tab

The Restore Factory Settings Tab will reset your CPE to the manufacturers default settings. Be sure to click the **Apply** button if you are sure you want to reset factory settings.

<b>Field or Button</b>	<b>Description</b>
Restore Factory Settings	Checking this box will restore the CPE to factory default settings. The device will restart when you click <b>Apply</b> .

## Internet Menu

The Internet menu provides the following tabs:

- WiMAX Security
- Internet Protocol
- Firewall
- Dynamic DNS

Internet Menu





## WiMAX Tab

The WiMAX tab will contain your authentication method. Check with your service provider to determine if they require a user name and password for authentication purposes.

Field or Button	Description
Authentication Method	Drop down box allows you to select either EAP-TLS (default) or EAP-TTLS/MS-CHAPv2.
User Name (EAP-TTLS/MS-CHAPv2 only)	Enter the User Name supplied by your service provider.
Password (EAP-TTLS/MS-CHAPv2 only)	Enter the Password supplied by your service provider.
Realm	Supplied by your service provider.

If your authentication method is EAP-TLS, then a User Name & Password are not necessary.

Click the **Apply** button.

## Internet Protocol Tab

Please check with your service provider for these settings. If you are unsure of the settings, leave the default values set and click the **Apply** button.

If your service provider has instructed you to change any of these settings, be sure to click the **Apply** button when you are finished.

## Firewall Tab

A firewall helps to protect your home network from unauthorized access. It will also help to manage authorized access from the internet to your CPE.

<b>Field or Button</b>	<b>Description</b>
Enable Firewall	Check this box to enable the firewall for your home network.
Enable Web Login from Internet	(Grayed out if Enable Firewall is not selected). Check this box to enables you to access your CPE device from a network other than your own.
Web Login Port from Internet	Choose a port number to connect to when logging in from a network other than your own. The default is 8080.
Enable ping from Internet	Enables the CPE to respond to a ping from the Internet. This option would be enabled to allow testing only. Do not leave this enabled.

The Enable Web Login from Internet and the Enable Ping from Internet options are by default turned off. This is because these options allow unknown users to access your computer via the internet, and this is not safe.

You may need to turn these options on if there is a problem with your CPE/Internet Connection. Turning these options on will allow your service provider access to your computer to troubleshoot any problems. Remember to enter the number of the port that is allowed to access your Computer if these options are turned on

Be sure to click the **Apply** button once you are finished.

## Dynamic DNS Tab

Dynamic Domain Name Service (DDNS) allows a user with a non-static IP address to keep their domain name associated with an ever changing IP address. As an example, DDNS is used when you are hosting your own website.

Field or Button	Description
Enable DDNS	Check this box to Enable DDNS (default is unchecked).
DDNS Service Provider	Select DDNS Service Provider that you belong to from the drop down box.
DDNS User Name	Only valid if Enable DDNS is checked. Enter your DDNS account user name.
DDNS Password	Only valid if Enable DDNS is checked. Enter your DDNS account password.
DDNS Host Name	Only valid if Enable DDNS is checked. Enter the DDNS Host Name. This is assigned by the DDNS service.

Be sure to click the **Apply** button once you are finished.

## Status Menu

The Status menu provides the following tabs:

- Network

Status Menu



### Network Tab

The Network tab will provide any status associated with your WiMAX Wireless Broadband connection.

Be sure to click the **Apply** button once you have made changes.

# Advanced Configuration

---

The Advanced Configuration section describes the Port Forwarding, Local Address, and Control Panel menus.

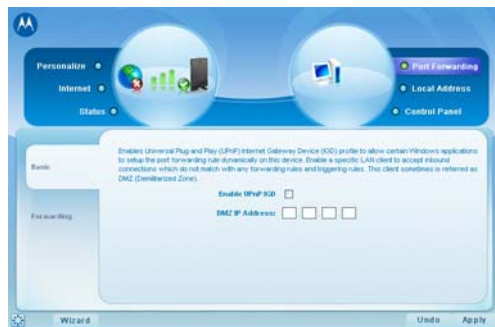
## Port Forwarding Menu

Port forwarding enables you to direct incoming traffic to specific LAN hosts (computers on your network) based on the protocol and port number. It is used to play Internet games or provide local services (such as web hosting) for a LAN group.

The Port Forwarding menu provides the following tabs:

- Basic
- Forwarding

Port Forwarding Menu



## Basic Tab

Field or Button	Description
Enable UPnP IGD	Enables Universal Plug and Play (UPnP) Internet Gateway Device (IGD) profile to allow certain Windows applications to setup the port forwarding rule dynamically when NAT is enabled on this device.
DMZ (DeMilitarized Zone) IP Address	Enter the DMZ IP Address.

Be sure to click the **Apply** button once you have made changes.

## Forwarding Tab

Click on the **ADD** button to create additional Port Forwarding rules.

Field or Button	Description
Select	Select a box when you want to delete the specific row.
Protocol	Select TCP (Transmission Control Protocol) or UDP (User Datagram Protocol).
WAN Port Start	Enter the beginning port range for external network access.
WAN Port End	Enter the ending port range for external network access.
LAN IP Address	Enter the IP address to host the service in the dotted-decimal format.
LAN Port Start	Enter the beginning port range for internal network access.
LAN Port End	Enter the ending port range for internal network access.
Enabled	Check to enable specific port forwarding.

Be sure to click the **Apply** button once you have made changes.



## Local Address Menu

The Local Address menu allows you to configure your Local Area Network (LAN) connections.

The Local Address menu provides the following tabs:

- DHCP Server
- Lease Status
- Lease Reservation

Local Address Menu



## DHCP Server Tab

The DHCP Server tab enables Dynamic Host Configuration Protocol (DHCP) server functionality on the LAN, allowing the router to dynamically assign lease IP addresses to clients that connect to it from the local network.

Field or Button	Description
Enable DHCP Server	<p>If selected, the DHCP server on the gateway assigns IP addresses to the computers and other hosts on your network if they have DHCP enabled. By default, the gateway server is enabled. If there is another DHCP server running on your network (on another router), you must disable one of the DHCP servers.</p> <p>If not selected, you must carefully configure the IP address, Subnet Mask, and DNS settings of every host on your network. Do not assign the same IP address to more than one host. Your gateway must be on the same subnet as the other hosts.</p>
DHCP Server IP Address	Enter the default port forwarding LAN Client IP Address.
DHCP Starting IP Address	Sets the first IP address assigned by the DHCP server, in dotted-decimal format. It must be greater than the IP address value of the gateway. For example, if the IP address of the gateway is 192.168.15.1 (default), the starting IP address must be 192.168.15.2 (or higher).

<b>Field or Button</b>	<b>Description</b>
DHCP Ending IP Address	Sets the final IP address assigned by the DHCP server. If the DHCP server runs out of DHCP addresses, users cannot access network resources. If this happens, increase the Ending IP (to the limit of 254) or reduce the Lease Time.
DHCP Lease Time	Sets the time, in seconds, that a network computer remains connected to the gateway using its current assigned IP address. At the end of this time, the DHCP server renews the lease or assigns the computer a new IP address. The default is 3600 seconds (1 hour). The maximum is 999999 seconds (about 278 hours).

Be sure to click the **Apply** button once you have made changes.

## Lease Status Tab

The Lease Status tab in the Local Address menu displays the active DHCP leases since the last reboot.

<b>Field or Button</b>	<b>Description</b>
Client Host Name	Displays the client host name. The Name field is limited to 20 characters (only 5 appear in display).
MAC Address	Media Access Control (MAC) address.
IP Address	Shows the IP Address for each active lease.
Remaining Lease Duration	Shows the amount of time, in seconds, remaining in the lease.

Be sure to click the **Apply** button once you have made changes.

## Lease Reservation Tab

This tab allows you to manage the lease reservation so that the same client receives the same IP address each time.

Field or Button	Description
Select	Select this box if you want to delete an established lease reservation. Be sure to click the <b>Delete</b> button once you have selected your exception to be deleted.
Client Host Name	Enter the client host name. The Name field is limited to 20 characters (only 5 appear in display)
MAC Address	Media Access Control (MAC) address. Enter the MAC address of the device.
IP Address	Enter the IP address that you want assigned to the MAC Address.
Enabled	Checking this box enables the lease reservation.

Be sure to click the **Apply** button once you have made changes.

## Control Panel

The Control Panel sections allows you to view/update your software information.

The Control menu provides the following tabs:

- Software
- Certificate
- System
- About

Control Panel Menu



## Software Tab

The Software tab manages the software on your CPE device. It is also where you can upgrade device software.

Use the **BROWSE** button to browse your computer for additional software packages. Once you have located the software package/update you would like to add to your device, click on the **Upgrade** button.

You should see the available software updates in the “Available Software Packages” table. If you cannot see the list, click the **View** button.

Select the software you would like to install and click the **Install** button.

If you would like to remove software, select the software package you would like to remove and click **Uninstall**.

## Certificate Tab

The Certificate tab is where you manage the certificates that are stored on the device.

Use the **BROWSE** button to locate the certificate file on your computer, and then click the **IMPORT** button.

Use the **REMOVE** button to remove any selected certificate(s).

## System Tab

This tab allows you to manage additional features of your CPE device.

Field or Button	Description
Language Used in User Interface	Select the desired language for the user interface. The default language is English.
Enable WiMAX Radio Interface	Check this box to enable the WiMAX Radio Interface.
Enable LED	Checking this box enables the LEDs on the front of your CPE device.
Auto Refresh Interval	Enter, in seconds, the interval for status Auto Refresh. Valid range is 2 seconds - 9999 seconds. The default value is 3 seconds.
Rebootstrap EMS	Check this box to reconnect the device with the EMS. <b>Note:</b> Only perform this function under the supervision of a Customer Support Representative.

Be sure to click the **Apply** button once you have made changes.

## About Tab

The About Tab will display basic properties of your CPE device such as: Product Name, Model ID, Hardware Version, Serial Number and the WiMAX MAC Address.



# Configuring TCP/IP

---

This chapter is needed for setup procedures.

All client computers on your network must be configured for TCP/IP (the protocol that controls communication among computers). Perform one of:

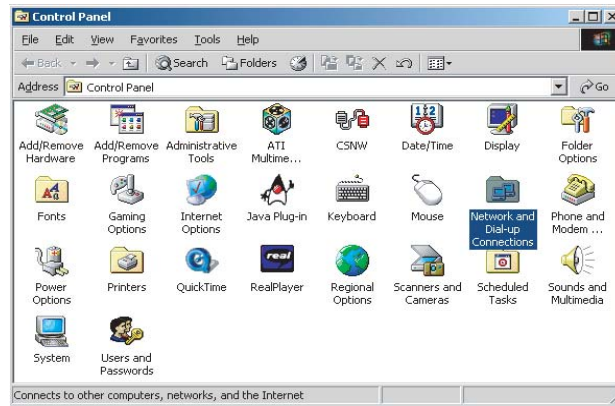
- Configuring TCP/IP in Windows 2000
- Configuring TCP/IP in Windows XP

**Note:** Follow the instructions in your Macintosh or UNIX user manual

## Configuring TCP/IP in Windows 2000

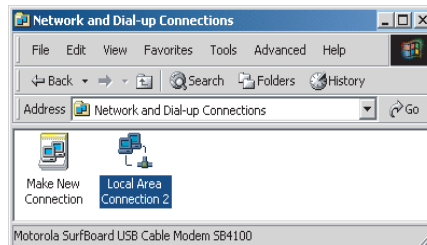
- 1 On the Windows Desktop, click **Start**.
- 2 Select **Settings** and then **Control Panel** from the pop-up menus to display the Control Panel window:

### Windows Control Panel



- 3 Double-click the **Network and Dial-up Connections** icon to display the Network and Dial-up Connections window:

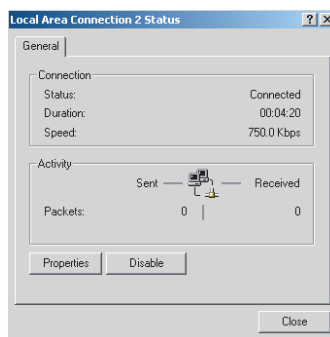
### Network and Dial-up Connections



In the steps that follow, a connection number like 1, 2, 3, etc., is a reference that is displayed on computers with multiple network interfaces. Computers with only one network interface may only see the label: Local Area Connection.

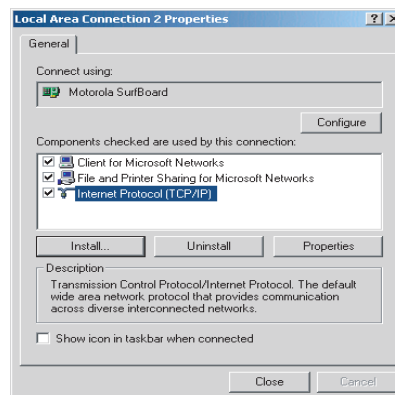
- 4 Click **Local Area Connection** number. The value of number varies from system to system. The Local Area Connection number Status window is displayed:

Local Area Connection



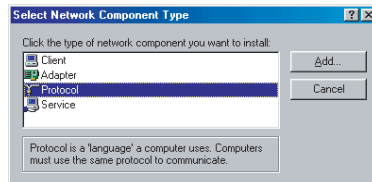
- 5 Click **Properties**. Information similar to the following window is displayed:

Properties



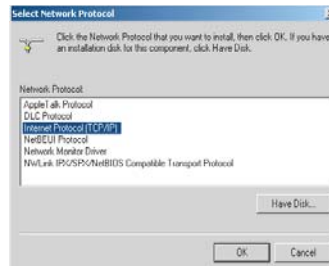
- 6 If Internet Protocol (TCP/IP) is in the list of components, TCP/IP is installed. You can skip to Step 10.

If Internet Protocol (TCP/IP) is not in the list, click **Install**. The Select Network Component Type window is displayed:  
Select Network Connection Type



- 7 Click **Protocol** on the Select Network Component Type window and click **Add**. The Select Network Protocol window is displayed:

Select Network Protocol



**Note:** You might have to use the scroll bar to locate the Internet Protocol (TCP/IP) setting.

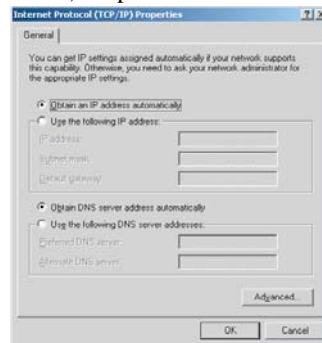
- 8 Click **Internet Protocol (TCP/IP)**.
- 9 Click **OK**. The Local Area Connection number Properties window is re-displayed.

#### 44 Configuring TCP/IP

**10** Be sure the box next to Internet Protocol (TCP/IP) is checked.

**11** Click **Properties**. The Internet Protocol (TCP/IP) Properties window is displayed:

Internet Protocol (TCP/IP) Properties



**12** Be sure Obtain IP address automatically and Obtain DNS server address automatically are selected.

**13** Click OK to accept the TCP/IP settings.

**14** Click Close to close the Local Area Connection number Properties window.

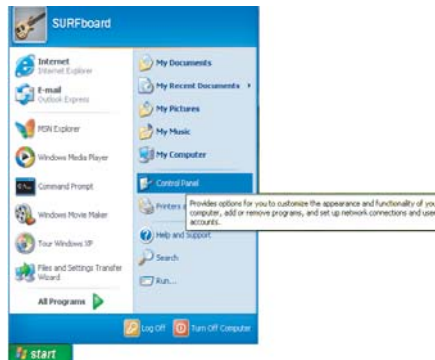
**15** Click OK

**16** If prompted to restart the computer and click OK again.

## Configuring TCP/IP in Windows XP

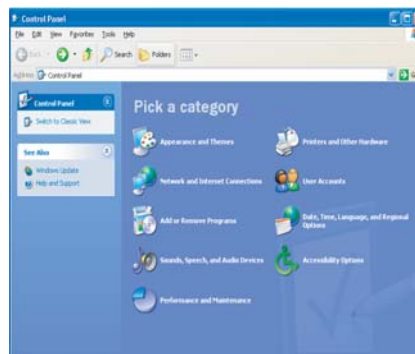
**1** On the Windows desktop, click **Start** to display the Start window:

## Windows XP Start Window



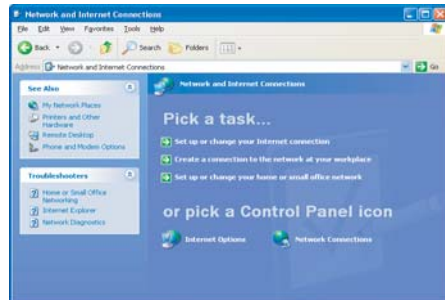
- 2 Click **Control Panel** to display the Control Panel window. The display varies, depending on your Windows XP view options. If the display is a Category view as shown below, continue with Step 3. Otherwise, skip to Step 5

## Control Panel



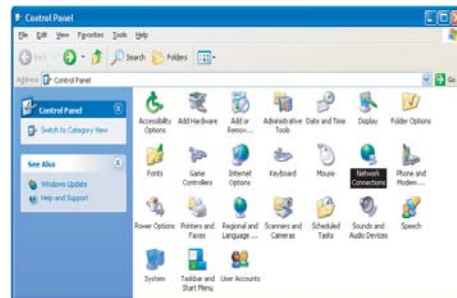
- 3 Click **Network and Internet Connections** to display the Network and Internet Connections window:
- 46 Configuring TCP/IP

## Network and Internet Connections



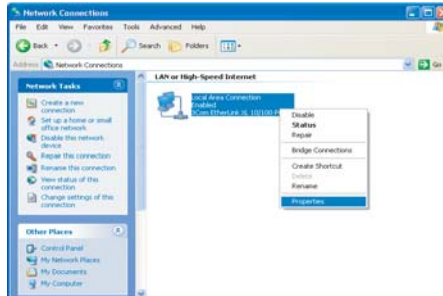
- 4 Click **Network Connections**. Skip to Step 6.
- 5 If a classic view similar to below is displayed, double-click **Network Connections** to display the LAN or High-speed Internet connections.

## Control Panel Classic View



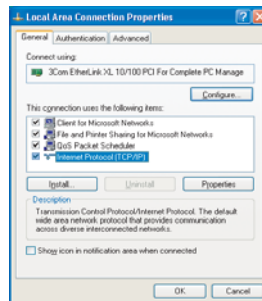
- 6 Right-click the **Local Area Connection**. If more than one connection is displayed, be sure to select the one for your network interface.

## Network Connections



- 7 Select **Properties** from the pop-up menu to display the Local Area Connection Properties window:

### Local Area Connection Properties

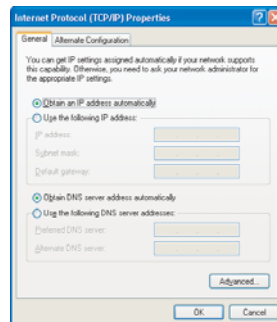


- 8 On the Local Area Connection Properties window, select **Internet Protocol (TCP/IP)** if it is not selected.
- 9 Click **Properties** to display the Internet Protocol (TCP/IP) Properties window:

## 48 Configuring TCP/IP



## Internet Protocol (TCP/IP) Properties



**10** Be sure Obtain IP address automatically and Obtain DNS server address automatically are selected.

**11** Click **OK** to close the TCP/IP Properties window.

# Troubleshooting

---

## Power LED is Off

- Check that the AC power adapter is properly plugged into the electrical outlet and into the Desktop CPE.
- Check that the electrical outlet is working.

## A Computer Cannot Log On to the CPE

Check that the Ethernet cable is properly connected to the Desktop CPE unit and the computer.

## Cannot Connect to the Internet

- Check the Desktop CPE connection status from the Web Interface, refer to the Connection Status section to verify the connection status.
- If the Desktop CPE connection is down, and the gateway has not received an IP for more than 5 minutes:
  - Re-Run the Setup Wizard.

## Additional Troubleshooting Help

- Contact your service provider for additional help.

## Important Safety and Legal Information

---

Your Motorola WiMAX Wireless Broadband Gateway is designed and tested to comply with a number of national and international standards and guidelines (listed below) regarding human exposure to RF electromagnetic energy.

This Product complies with the following RF energy exposure standards and guidelines:

- United States Federal Communications Commission, Code of Federal Regulations; 47CFR part 2 sub-part J
- American National Standards Institute (ANSI)/ Institute of Electrical and Electronic Engineers (IEEE) C95.1-2005
- Institute of Electrical and Electronic Engineers (IEEE) C95.1-1999 Edition
- International Commission on Non-Ionizing Radiation Protection (ICNIRP) 1998
- Ministry of Health (Canada) Safety Code 6. Limits of Human Exposure to Radio frequency Electromagnetic Fields in the Frequency Range from 3 kHz to 300 GHz, 1999
- Australian Communications Authority Radiocommunications (Electromagnetic Radiation - Human Exposure) Standard, 2003
- ANATEL ANNEX to Resolution No. 303 of July 2, 2002 “Regulation of Limitation of Exposure to Electrical,

Magnetic, and Electromagnetic Fields in the Radio Frequency Range Between 9 kHz and 300 GHz” and “Attachment to Resolution #303 from July 2, 2002”

### RF Exposure Compliance and Guidelines Operating Instructions

To comply with FCC RF energy exposure requirements, this Gateway desktop transmitter should be operated at a minimum separation distance of 20 cm from all persons.

For additional information on exposure requirements or other training information, visit <http://www.motorola.com/rfhealth>

### FCC Regulatory Information

This device complies with Part 15 of the FCC Rules. Operation is subject to the following two conditions: (1) this device may not cause harmful interference, and (2) this device must accept any interference received; including interference that may cause undesired operation.

This equipment has been tested and found to comply with the limits for a Class B digital device pursuant to Part 15 of the FCC rules. These limits are designed to provide reasonable protection against harmful interference in a residential installation. This equipment generates, uses, and can radiate radio frequency energy and, if not installed and used in accordance with the instructions, may cause harmful interference to radio communications.

However, there is no guarantee that interference will not occur in a particular installation. If this equipment does cause harmful interference to radio or television reception, which can be determined by turning the equipment off and on, the user is

encouraged to try to correct the interference by one of the following measures:

- Reorient or relocate the receiving antenna.
- Increase the separation between the equipment and receiver.
- Connect the equipment into an outlet on a circuit different from that to which the receiver is connected.
- Consult the dealer or an experienced radio/TV technician for help.

This Gateway desktop transmitter must not be co-located or operating in conjunction with any other antenna or transmitter.

FCC Caution: Any changes or modifications not expressly approved by the party responsible for compliance could void the user's authority to operate this equipment.

### Industry Canada Statement

This device complies with RSS-210 of the Industry Canada Rules. Operation is subject to the following two conditions:

this device may not cause interference and

this device must accept any interference, including interference that may cause undesired operation of the device

This device has been designed to operate with an antenna having a maximum gain of 7 dBi. Antenna having a higher gain is strictly prohibited per regulations of Industry Canada. The required antenna impedance is 50 ohms. To reduce potential radio interference to other users, the antenna type and its gain should be

so chosen that the equivalent isotropically radiated power (e.i.r.p) is not more than that permitted for successful communications.

This Class B digital apparatus complies with Canadian ICES-003.

Cet appareil numérique de la classe B est conforme à la norme NMB-003 du Canada.

IC Radiation Exposure Statement:

IMPORTANT NOTE:

This equipment complies with IC radiation exposure limits set forth for an uncontrolled environment. This equipment should be installed and operated with minimum distance 20cm between the radiator & your body.

## Caring for the Environment

---

The following information is provided to enable regulatory compliance with the European Union (EU) Directive 2002/96/EC Waste Electrical and Electronic Equipment (WEEE) when using Motorola Networks equipment in EU countries.

### Disposal of Motorola Equipment in EU Countries

This product is compliant with the requirements of the European Union Restriction of Hazardous Substances (EU RoHS) directive.



Please do not dispose of Motorola Networks equipment in landfill sites.

In the EU, Motorola Networks in conjunction with a recycling partner will ensure that equipment is collected and recycled according to the requirements of EU environmental law.

## Disposal of Motorola Networks Equipment in Non-EU countries

In non-EU countries, dispose of Motorola Networks equipment in accordance with national and regional regulations.



## CMM Disclosure

---

The China Management Methods (CMM) Disclosure Table is intended only to communicate compliance with China requirements; it is not intended to communicate compliance with EU RoHS or any other environmental requirements.

CMM Disclosure Information

部件名称	有毒有害物质或元素					
	铅 (Pb)	汞 (Hg)	镉 (Cd)	六价铬 (Cr <sup>6+</sup> )	多溴联苯 (PBB)	多溴二苯醚 (PBDE)
金属部件	×	○	×	×	○	○
电路模块	×	○	×	×	○	○
电缆及电缆组件	×	○	×	×	○	○
塑料和聚合物部件	○	○	○	○	○	×

○： 表示该有毒有害物质在该部件所有均质材料中的含量均在 SJ/T11363-2006 标准规定的限量要求以下。  
 ×： 表示该有毒有害物质至少在该部件的某一均质材料中的含量超出 SJ/T11363-2006 标准规定的限量要求。

# Copyrights and Trademarks

---

## Notice

While reasonable efforts have been made to assure the accuracy of this document, Motorola, Inc. assumes no liability resulting from any inaccuracies or omissions in this document, or from use of the information obtained herein. The information in this document has been carefully checked and is believed to be entirely reliable.

However, no responsibility is assumed for inaccuracies or omissions. Motorola, Inc. reserves the right to make changes to any products described herein and reserves the right to revise this document and to make changes from time to time in content hereof with no obligation to notify any person of revisions or changes. Motorola, Inc. does not assume any liability arising out of the application or use of any product, software, or circuit described herein; neither does it convey license under its patent rights or the rights of others.

It is possible that this publication may contain references to, or information about Motorola products (machines and programs), programming, or services that are not announced in your country. Such references or information must not be construed to mean that Motorola intends to announce such Motorola products, programming, or services in your country.

## Copyrights

This instruction manual, and the Motorola products described in this instruction manual may be, include or describe copyrighted

Motorola material, such as computer programs stored in semiconductor memories or other media. Laws in the United States and other countries preserve for Motorola and its licensors certain exclusive rights for copyrighted material, including the exclusive right to copy, reproduce in any form, distribute and make derivative works of the copyrighted material. Accordingly, any copyrighted material of Motorola and its licensors contained herein or in the Motorola products described in this instruction manual may not be copied, reproduced, distributed, merged or modified in any manner without the express written permission of Motorola. Furthermore, the purchase of Motorola products shall not be deemed to grant either directly or by implication, estoppel, or otherwise, any license under the copyrights, patents or patent applications of Motorola, as arises by operation of law in the sale of a product.

## Usage and Disclosure Restrictions

### License Agreements

The software described in this document is the property of Motorola, Inc and its licensors. It is furnished by express license agreement only and may be used only in accordance with the terms of such an agreement.

### Copyrighted Materials

Software and documentation are copyrighted materials. Making unauthorized copies is prohibited by law. No part of the software or documentation may be reproduced, transmitted, transcribed, stored in a retrieval system, or translated into any language or computer language, in any form or by any means, without prior written permission of Motorola, Inc.

## High Risk Materials

Components, units, or third-party products used in the product described herein are NOT fault-tolerant and are NOT designed, manufactured, or intended for use as on-line control equipment in the following hazardous environments requiring fail-safe controls: the operation of Nuclear Facilities, Aircraft Navigation or Aircraft Communication Systems, Air Traffic Control, Life Support, or Weapons Systems (High Risk Activities). Motorola and its supplier(s) specifically disclaim any expressed or implied warranty of fitness for such High Risk Activities.

## Trademarks

MOTOROLA and the Stylized M Logo are registered in the US Patent & Trademark Office. All other product or service names are the property of their respective owners.

© Motorola, Inc., 2007