



CPE 400 SERIES INSTALLATION



MOTOWI⁴

Motorola recommends installing the external Ethernet cable in accordance with the latest revision of the National Electrical Code (NEC) and/or all country and local electrical codes to provide some protection against damage caused by near-miss lightning strikes and other electrical discharges.

MOTOSTART

INSTALLER SUPPLIED ITEMS

- Adjustable Wrench
- Two outdoor Ethernet cables
- Surge Suppressor (if required)
- Cross recessed screwdriver
- Ground cable

MOTOROLA and the Stylized M Logo are registered in the US Patent & Trademark Office. All other product or service names are the property of their respective owners. © Motorola, Inc., 2007.



68P09287A82-B

HARDWARE INSTALLATION PROCEDURE

Note: The Ethernet port is used for both power and data.

1. Mount the CPE unit by following and referring to figures 2 and 4. Do NOT tighten the set screws/bolts. Site configuration determines if the CPE unit is mounted on a pole or a wall.
2. Mount the Surge Suppressor according to the manufacturer's instructions.
3. Connect ground cable from CPE unit to ground.
4. Attach the boot on the outdoor Ethernet cable connector as shown in figures 1 and 3. Then connect that outdoor Ethernet cable between the surge suppressor and the CPE unit.
5. Connect an outdoor Ethernet cable between the Connector Box (To Radio) and the Surge Suppressor. (Refer to Figure 1.)
6. Connect the AC power cord to the Power Adaptor and then to the AC outlet/power source. (Refer to Figure 1.)
7. Plug the end of the short ethernet cable (To computer) into the Ethernet port of your computer.
8. Adjust CPE unit left/right and up/down until the interval of beeping is shortest or a constant tone. Tighten the set screws to hold the CPE unit in position.
9. At your computer, open your browser and enter <http://mywimax>. (With a dot at the end) into the address field and press the Enter key. A wizard will start up to guide you through the configuration.
10. Follow the directions in the wizard to complete the configuration.
11. Navigate the browser to Control Panel>System and disable the buzzer. The unit will stop beeping.

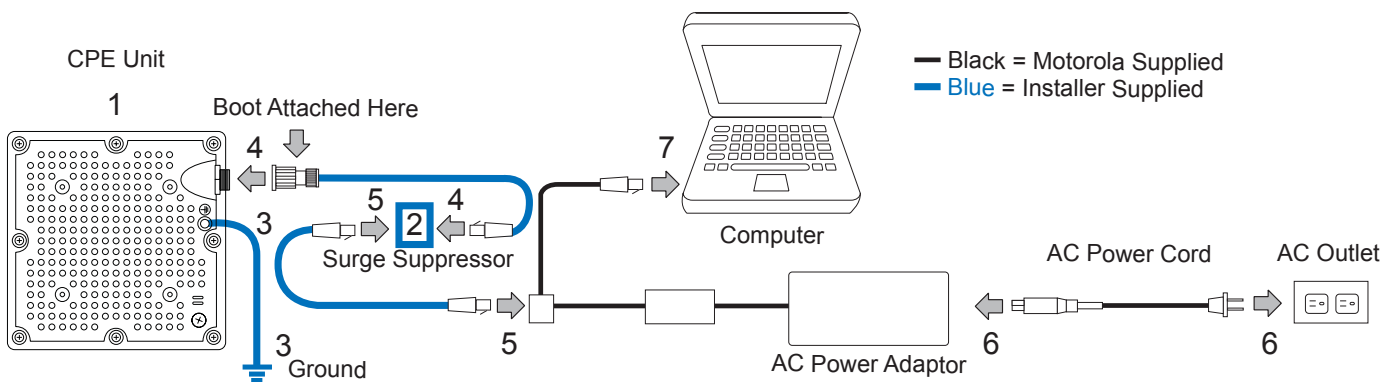


Figure 1

Connected to Pole – Assembled

Connected to Wall – Assembled

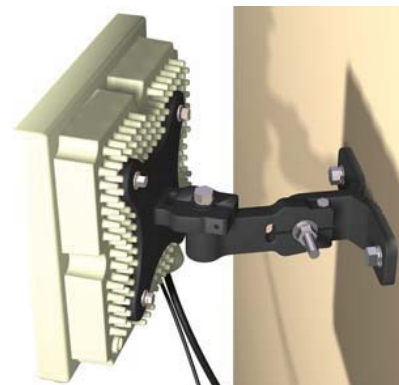
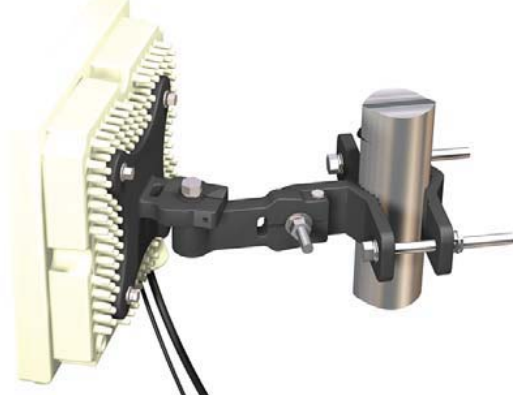


Figure 2

CPEo 400 Series

Boot Assembly

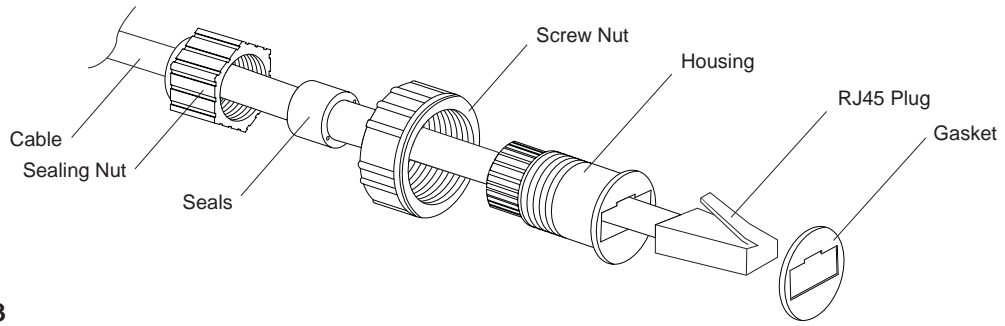


Figure 3

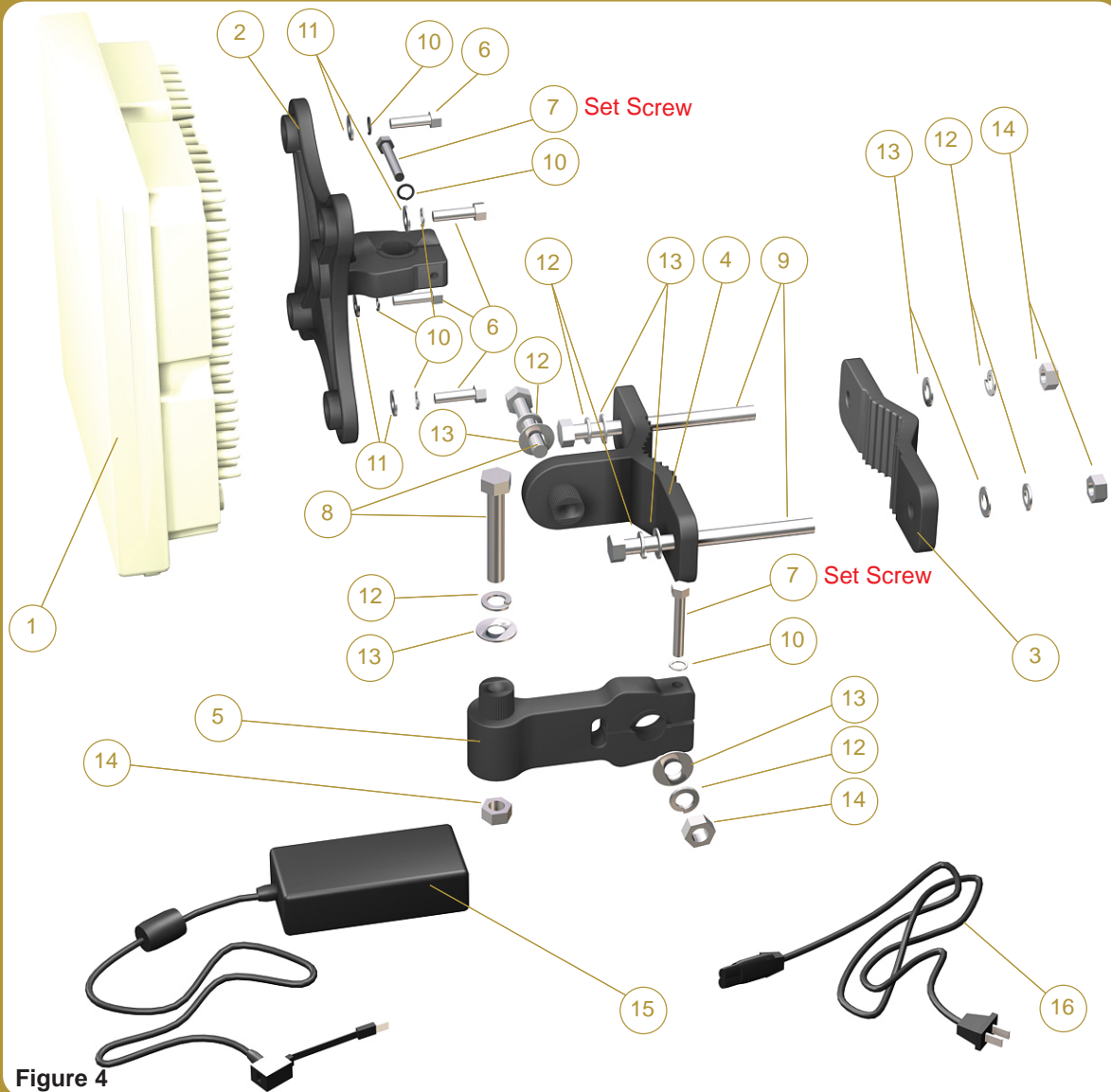


Figure 4

PARTS LIST

ITEM	DESCRIPTION	QTY	ITEM	DESCRIPTION	QTY
①	CPE UNIT	1	⑨	M8 HEX HD BOLT 100MM	2
②	BASE BRACKET	1	⑩	M5 SPRINGWASHER	6
③	POLE MTG BRACKET REAR	1	⑪	M5 WASHER	4
④	WALL/POLE MTG BRACKET	1	⑫	M8 SPRINGWASHER	7
⑤	MIDDLE MTG BRACKET	1	⑬	M8 WASHER	7
⑥	M5 HEX HD BOLT 20MM	4	⑭	M8 HEX NUT	4
⑦	M5 SET SCR/HEX HD BOLT 35MM	2	⑮	AC POWER ADAPTOR	1
⑧	M8 HEX HD BOLT 50MM	2	⑯	AC POWER CORD	1