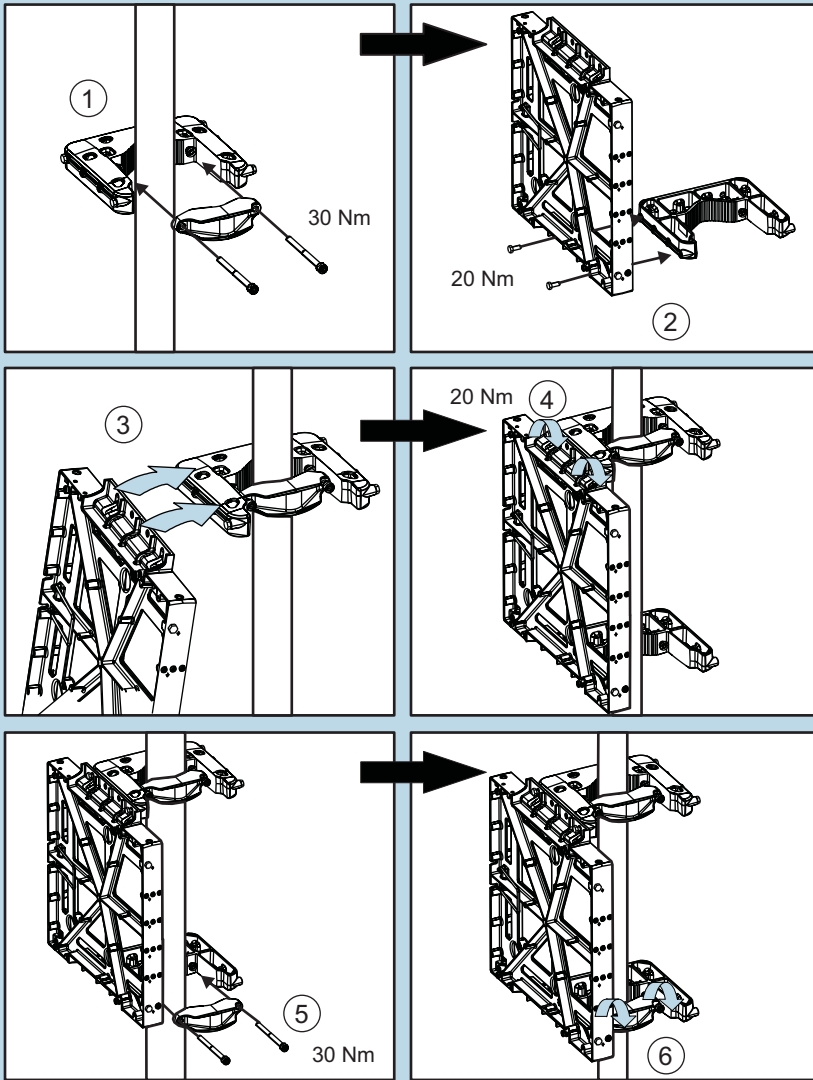


Installing the plinth (continued)

Plinth on the pole (Note that FPKA installations is shown. See the user manual if the VMPB pole mounting kit is used.)



1. Fix the upper mounting bracket on the pole. Attach the mounting bracket screws (M10) on the bracket. Tighten screws to 30 Nm.

2. Fix one side of the lower pole mounting bracket on the plinth with mounting screws (M8). Tighten screws to 20 Nm.

3. Lift the plinth on the pole and fit it to the mounting screws of the pole mounting bracket. Tighten screws (M8) to 20 Nm.

4. Place the counterpart of the lower pole mounting bracket in its place. Tighten screws (M10) to 30 Nm.

5. If a second plinth is required, install it on the other side of the pole mounting bracket.

6. Ground the plinth to the site main ground.

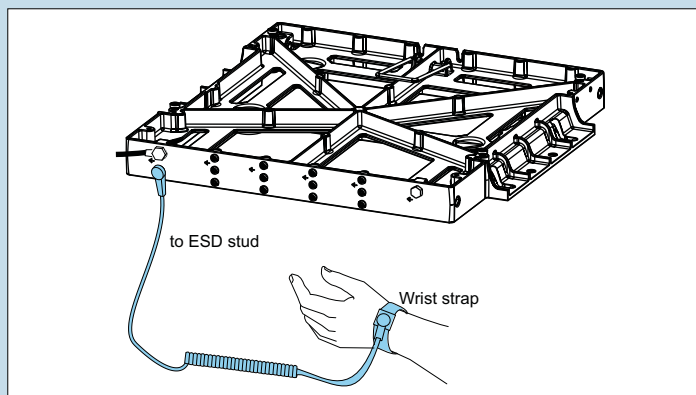
Note that the length of mounting screws depends on the diameter of the pole. Please see the user manual for details.

Check list

- Plinth is installed according to instructions.
- Plinth is level.

4 Grounding the plinth

Grounding principle



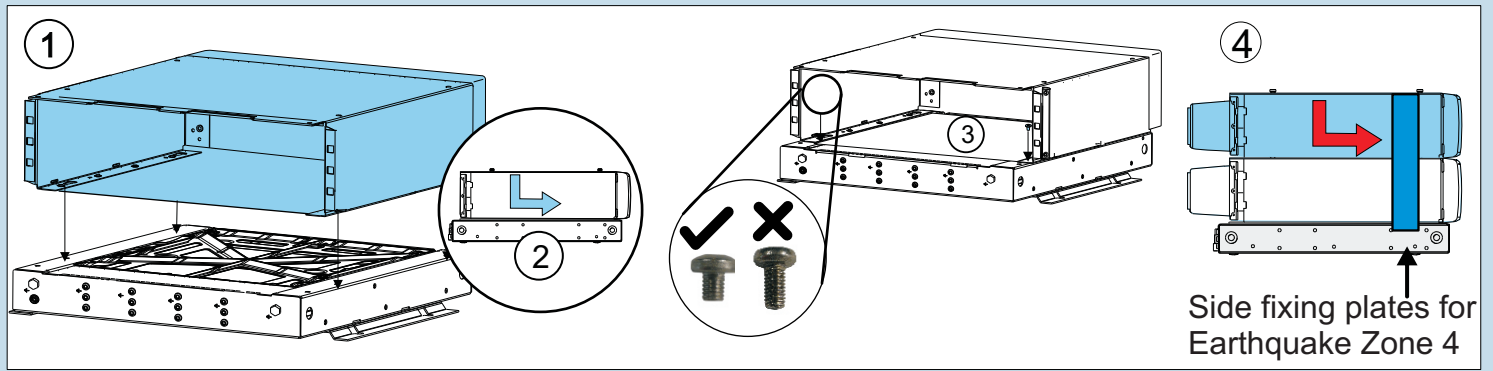
1. Ground the plinth to the site main ground. Tighten to 8.0-10.0 Nm (5.9-7.37 ft-lb)

2. Connect the wrist strap.

Check list

- Local grounding (earthing) regulations are followed.
- Antistatic wrist strap is used when handling modules.
- Plinth is grounded.

5 Installing the casings



Note:

- The casings are pre-installed with back covers.
- In Earthquake Zone 4, the maximum number of modules for stack installations is five.
- In Earthquake Zone 4, install side fixing plates on the casings.
- In Earthquake Zone 2, the maximum allowed height for a stack is 22U.
- In pole and wall installations, the maximum modules per plinth is two.
- In pole and wall installations, maintenance straps must be installed in the casings.
- M5 X 8 screws should be secured with thread locking compound in pole and wall installations

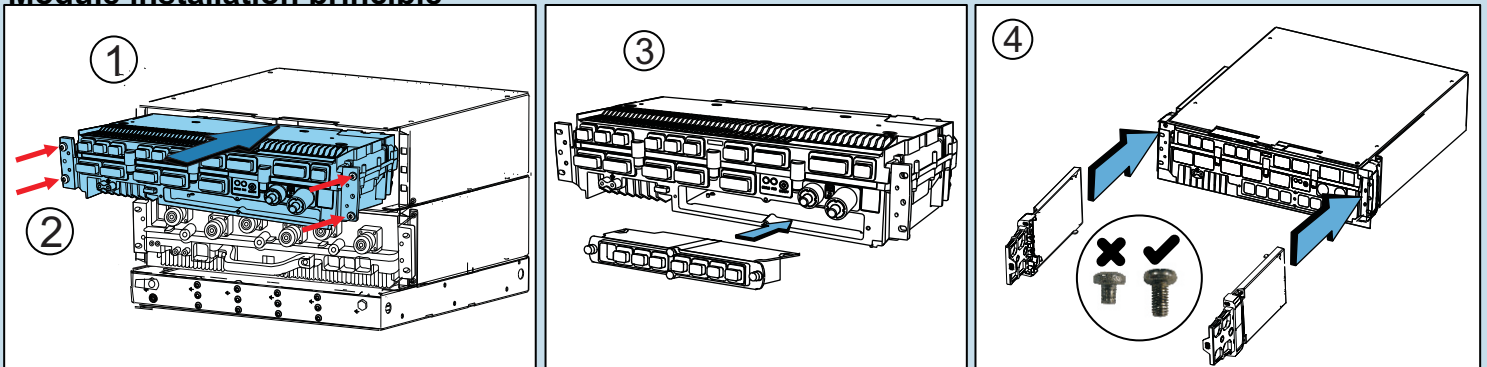
1. Align the holes of the first casing bottom with the fixing studs on the plinth
2. Push the casing back until it stops.
3. Attach the casing to the plinth with M5 X 8 mm screws (6150279). Tighten to 3.5-4.2 Nm (2.58-3.10 ft-lb)
4. Install the remaining casings as required by the configuration

Check list

- Back covers are properly installed.
- Fixing screws are tightened.
- Optional: In pole and wall installations, maintenance straps are installed in the front covers.

6 Installing the modules

Module installation principle



1. Slide the RF module and the System Module into the casings.
2. Attach the module(s) to the casing with M5 X 25 mm screws. Tighten to 3.5-4.2 Nm (2.58-3.10 ft-lb).
3. Install the transmission sub-module to the System Module. Tighten to 2.7-3.3 Nm (1.99-2.43 ft-lb).
4. Install the cable entries on both casings with M5 X 10 mm screws (6150240). Torque 3.5 to 4.2 Nm.
Note: In pole and wall installations, install the maintenance strap for back covers.

Check list

- Module back covers and cable entries are installed.
- Screws are tightened to the specified torque value.

Note: In pole and wall installations, screws are secured with thread locking compound.