

motorola.com



**MOTOROLA**



WiMAX Wave2 USB Adaptor  
USBw25100

MOTOROLA and the Stylized M Logo are registered in the US Patent & Trademark Office. All other product or service names are the property of their respective owners.  
© Motorola, Inc., 2008.

## Important Safety and Legal Information

Your Motorola WiMAX Universal Serial Bus Device (USB) is designed and tested to comply with a number of national and international standards and guidelines (listed below) regarding human exposure to RF electromagnetic energy.

This Product complies with the following RF energy exposure standards and guidelines:

- United States Federal Communications Commission, Code of Federal Regulations; 47CFR part 2 sub-part J
- American National Standards Institute (ANSI)/ Institute of Electrical and Electronic Engineers (IEEE) C95 1-2005
- Institute of Electrical and Electronic Engineers (IEEE) C95.1-1999 Edition
- International Commission on Non-Ionizing Radiation Protection (ICNIRP) 1998
- Ministry of Health (Canada) Safety Code 6. Limits of Human Exposure to Radio frequency Electromagnetic Fields in the Frequency Range from 3 kHz to 300 GHz, 1999

### RF Exposure Compliance and Guidelines Operating Instructions

For additional information on exposure requirements or other training information, visit <http://www.motorola.com/rfhealth>

### FCC Regulatory Information (USBw 25100) 2.5 GHz Band

This device complies with Part 15 of the FCC Rules. Operation is subject to the following two conditions: (1) this device may not cause harmful interference, and (2) this device must accept any interference received; including interference that may cause undesired operation.

This equipment has been tested and found to comply with the limits for a Class B digital device pursuant to Part 15 of the FCC rules. These limits are designed to provide reasonable protection against harmful interference in a residential installation. This equipment generates, uses, and can radiate radio frequency energy and, if not installed and used in accordance with the instructions, may cause harmful interference to radio communications.

However, there is no guarantee that interference will not occur in a particular installation. If this equipment does cause harmful interference to radio or television reception, which can be determined by turning the equipment off and on, the user is encouraged to try to correct the interference by one of the following measures:

- Reorient or relocate the receiving antenna.
- Increase the separation between the equipment and receiver.
- Connect the equipment into an outlet on a circuit different from that to which the receiver is connected.
- Consult the dealer or an experienced radio/TV technician for help.

This USB transmitter must not be co-located or operating in conjunction with any other antenna or transmitter.

FCC Caution: Any changes or modifications not expressly approved by the party responsible for compliance could void the user's authority to operate this equipment.

### High Risk Materials

Components, units, or third-party products used in the product described herein are NOT fault-tolerant and are NOT designed, manufactured, or intended for use as on-line control equipment in the following hazardous environments requiring fail-safe controls: the operation of Nuclear Facilities, Aircraft Navigation or Aircraft Communication Systems, Air Traffic Control, Life Support, or Weapons Systems (High Risk Activities). Motorola and its supplier(s) specifically disclaim any expressed or implied warranty of fitness for such High Risk Activities.

### Trademarks

MOTOROLA and the Stylized M Logo are registered in the US Patent & Trademark Office. All other product or service names are the property of their respective owners.

© Motorola, Inc., 2008

SAR compliance has been established in typical laptop computer(s) with USB slot, and product could be used in typical laptop computer with USB slot. Other application like handheld PC or similar device has not been verified and may not compliance with related RF exposure rule and such use shall be prohibited.

## Installation Procedure

1. Insert the CD into your laptop computer's CD drive.  
Windows XP: If setup does not automatically start: click "Start" and choose "Run," type "D:\setup.exe" (D is CD-ROM) and click "OK". Windows Vista: If setup does not automatically start: click "Start" and choose "Computer" right click on "DVD drive" or "CD drive" and choose "open auto play". Select "run setup.exe"
2. Install the device software by following the software installation steps. Follow the connection manager installation steps.
3. Insert the USB modem into your laptop's USB port, and begin browsing the web.
4. Set up your WiFi networks. You may pre-set your frequently used WiFi locations now or set them up as you encounter each WiFi network. To pre-set the WiFi locations now, click "Profiles" and then "Add" and follow the steps to set up each WiFi network.
5. Set up WiFi networks as you encounter them. When you encounter a WiFi network, open the Clearwire Connection Manager and click the WiFi tab, then click the available networks text.
6. Select your desired network and click the "Connect" button. If required, input the security key and click "Connect".

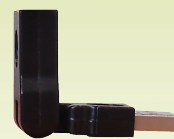
### Included in box



Installation CD



USBw25100



Elbow Connector



USBw25100



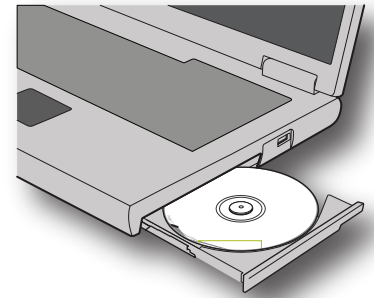
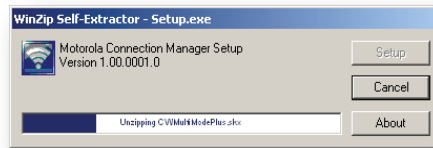
MOTOROLA and the Stylized M Logo are registered in the US Patent & Trademark Office. All other product or service names are the property of their respective owners. © 2008 Motorola, Inc.

68P09292A82-A

**clearwire**  
USB Modem Quick Start Guide

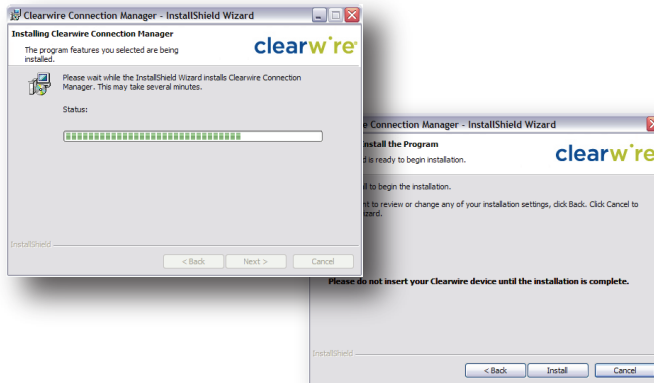
## 1 Insert the CD into your laptop computer's CD drive

- Insert the CD into your laptop computer's CD drive. Windows XP: If setup does not automatically start: click "Start" and choose "Run", type "D:\setup.exe" (D is CD-ROM) and click "OK". Windows Vista: If setup does not automatically start: click "Start" and choose "Computer" right click on "DVD drive" or "CD drive" and choose "Open Auto Play". Select "Run Setup.exe"



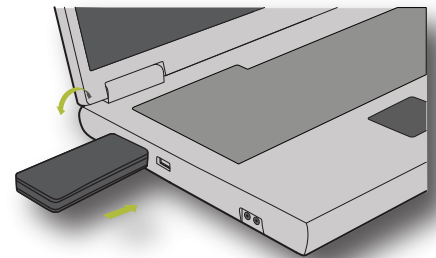
## 2 Install the device software by following the software installation steps

- Follow the Connection Manager installation steps.



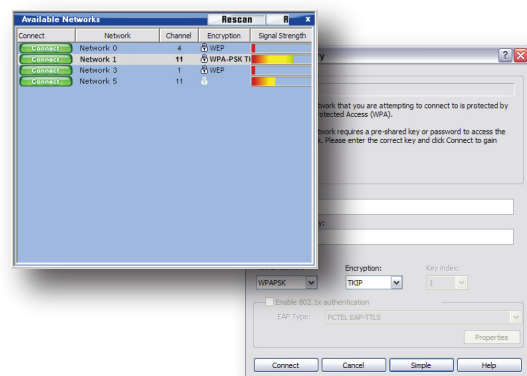
## 3 Insert the USB modem into your laptop's USB port

- You're finished! Begin browsing the web.



## 4 Set up your WiFi networks

- You may pre-set your frequently used WiFi locations now or set them up as you encounter each WiFi network. To pre-set the WiFi locations now, click "Profiles" and then "Add" and follow the steps to set up each WiFi network. Otherwise follow the steps below to set up a WiFi network each time you encounter one.



- When you encounter a WiFi network, open the Clearwire connection manager and click the WiFi tab, then click available networks text.
- Select your desired network and click the "Connect" button. If required, input the security key and click "Connect".