

Nokia C2-01 User Guide

C2-01/C2-01.5

Issue 1.1

Contents	18
Safety	4
About your device	4
Network services	5
Get started	7
Keys and parts	7
Insert SIM card and battery	7
Insert a memory card	9
Remove the memory card	9
Charge the battery	10
Attach a wrist strap	10
Switch the device on or off	10
GSM antenna	11
Headset	11
Basic use	12
Keypad lock	12
Access codes	12
PUK codes	12
Volume control	13
Standby mode	13
Indicators	13
Navigate the menus	14
Shortcuts	14
Operator menu	14
Use your device without a SIM card	15
Write text	15
Nokia account and Nokia's Ovi services	16
About Ovi Store	16
Contacts	16
Calls	17
Make and answer a call	17
Loudspeaker	17
Dialing shortcuts	18
Log	18
Messaging	18
Text and multimedia messages	18
Mail	20
Chat with your friends	20
Flash messages	21
Nokia Xpress audio messages	21
Voice messages	21
Message settings	22
Organizer	22
Alarm clock	22
Calendar and to-do list	22
Web or Internet	23
Connect to a web service	23
Media	23
Camera and video	23
FM radio	24
Voice recorder	25
Music player	25
Gallery	26
Settings	27
Profiles	27
Tones	28
Display	28
Date and time	28
Synchronization and backup	28
Connectivity	29
Call and phone	30
Restore factory settings	31
Find more help	31
Support	31
About device software updates	31
Update device software using your device	32
Update device software using your PC	33
Protect the environment	33

Save energy 33

Recycle 33

Product and safety information 34

Safety

Read these simple guidelines. Not following them may be dangerous or illegal. For further information, read the complete user guide.

We invite you to read the instructions on this guide before using the device.

SWITCH ON SAFELY



Do not switch the device on when wireless phone use is prohibited or when it may cause interference or danger.

ROAD SAFETY COMES FIRST



Obey all local laws. Always keep your hands free to operate the vehicle while driving. Your first consideration while driving should be road safety.

INTERFERENCE



All wireless devices may be susceptible to interference, which could affect performance.

SWITCH OFF IN RESTRICTED AREAS



Follow any restrictions. Switch the device off in aircraft, near medical equipment, fuel, chemicals, or blasting areas.

QUALIFIED SERVICE



Only qualified personnel may install or repair this product.

ACCESSORIES AND BATTERIES



Use only approved accessories and batteries. Do not connect incompatible products.

WATER-RESISTANCE



Your device is not water-resistant. Keep it dry.

About your device

The wireless device described in this guide is approved for use on the (E)GSM 850, 900, 1800, and 1900 MHz networks, and UMTS 900/1900/2100 MHz networks (RM-721), or

(E)GSM 850, 900, 1800, and 1900 MHz networks, and UMTS 850/1900/2100 MHz networks (RM-722) . Contact your service provider for more information about networks.

Your device may have preinstalled bookmarks and links for third-party internet sites and may allow you to access third-party sites. These are not affiliated with Nokia, and Nokia does not endorse or assume liability for them. If you access such sites, take precautions for security or content.

**Warning:**

To use any features in this device, other than the alarm clock, the device must be switched on. Do not switch the device on when wireless device use may cause interference or danger.

When using this device, obey all laws and respect local customs, privacy and legitimate rights of others, including copyrights. Copyright protection may prevent some images, music, and other content from being copied, modified, or transferred.

Make back-up copies or keep a written record of all important information stored in your device.

When connecting to any other device, read its user guide for detailed safety instructions. Do not connect incompatible products.

The images in this guide may differ from your device display.

Refer to the user guide for other important information about your device.

Network services

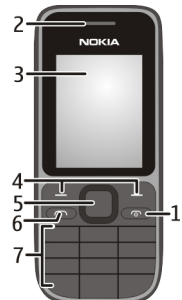
To use the device you must have service from a wireless service provider. Some features are not available on all networks; other features may require that you make specific arrangements with your service provider to use them. Network services involve transmission of data. Check with your service provider for details about fees in your home network and when roaming on other networks. Your service provider can explain what charges will apply. Some networks may have limitations that affect how you can use some features of this device requiring network support such as support for specific technologies like WAP 2.0 protocols (HTTP and SSL) that run on TCP/IP protocols and language-dependent characters.

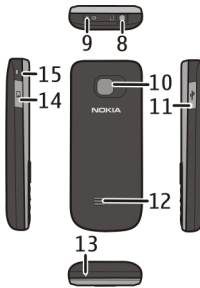
Your service provider may have requested that certain features be disabled or not activated in your device. If so, these features will not appear on your device menu. Your device may also have customized items such as menu names, menu order, and icons.

During extended operation such as a high speed data connection, the device may feel warm. In most cases, this condition is normal. If you suspect the device is not working properly, take it to the nearest authorized service facility.

Get started

Keys and parts

1	End/Power key	
2	Earpiece	
3	Display	
4	Selection keys	
5	Navi™ key (scroll key)	
6	Call key	
7	Keypad	

8	Charger connector	
9	Headset connector/Nokia AV Connector (3.5 mm)	
10	Camera lens	
11	Micro USB connector	
12	Loudspeaker	
13	Microphone	
14	Memory card slot	
15	Wrist strap hole	

Insert SIM card and battery



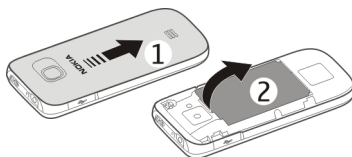
Important: Do not use a mini-UICC SIM card, also known as a micro-SIM card, a micro-SIM card with an adapter, or a SIM card that has a mini-UICC cutout (see figure) in this device. A micro-SIM card is smaller than the standard SIM card. This device does not support the use of micro-SIM cards and use of incompatible SIM cards may damage the card or the device, and may corrupt data stored on the card.

8 Get started

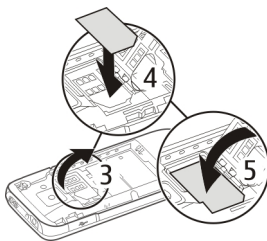


The SIM card and its contacts can be easily damaged by scratches or bending, so be careful when handling, inserting, or removing the card.

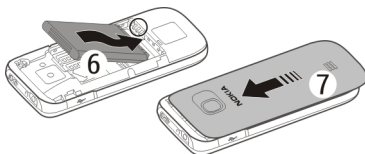
- 1 Press and slide the back cover towards the bottom of the phone, and remove it (1).
- 2 Remove the battery (2).



- 3 Open the SIM card holder (3), insert the SIM card with the contact surface facing down (4), and close the holder (5).



- 4 Insert the battery (6), and replace the back cover (7).



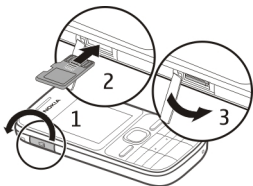
Insert a memory card

Use only compatible microSD cards approved by Nokia for use with this device. Nokia uses approved industry standards for memory cards, but some brands may not be fully compatible with this device. Incompatible cards may damage the card and the device and corrupt data stored on the card.




Your device supports microSD memory cards with a capacity of up to 16 GB.

A compatible memory card may be supplied with the device, and may already be inserted in the device. If not, do the following:

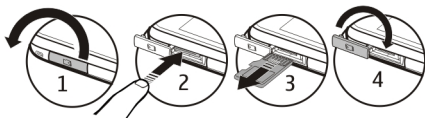


- 1 Open the cover of the memory card slot.
- 2 Insert the card into the memory card slot with the contact surface facing up, and press until it locks into place.
- 3 Close the cover of the memory card slot.

Remove the memory card

 **Important:** Do not remove the memory card during an operation when the card is being accessed. Doing so may damage the memory card and the device, and corrupt data stored on the card.

You can remove or replace the memory card during phone operation without switching the device off, but you need to make sure that no application is currently accessing the memory card.



Charge the battery

Your battery has been partially charged at the factory. If the device indicates a low charge, do the following:

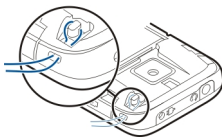


- 1 Connect the charger to a wall outlet.
- 2 Connect the charger to the device.
- 3 When the device indicates a full charge, disconnect the charger from the device, then from the wall outlet.


You do not need to charge the battery for a specific length of time, and you can use the device while it charges. If the battery is completely without charge, it may take several minutes before the charging indicator appears on the display or before any calls can be made.

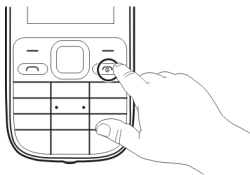
Attach a wrist strap

Thread the wrist strap, and tighten it.



Switch the device on or off

Press and hold the power key .



You may be prompted to get the configuration settings from your service provider (network service). For more information, contact your service provider.

GSM antenna



Your device may have internal and external antennas. Avoid touching the antenna area unnecessarily while the antenna is transmitting or receiving. Contact with antennas affects the communication quality and may cause a higher power level during operation and may reduce the battery life.

The figure shows the GSM antenna area marked in grey.

Headset



Warning:

Continuous exposure to high volume may damage your hearing. Listen to music at a moderate level, and do not hold the device near your ear when the loudspeaker is in use.



Warning:

When you use the headset, your ability to hear outside sounds may be affected. Do not use the headset where it can endanger your safety.

When connecting any external device or any headset, other than those approved by Nokia for use with this device, to the Nokia AV Connector, pay special attention to volume levels.

Do not connect products that create an output signal as this may cause damage to the device. Do not connect any voltage source to the Nokia AV Connector.

Basic use

Keypad lock

To prevent accidental keypresses, select **Menu**, and press * within 3.5 seconds to lock the keypad.

To unlock the keypad, select **Unlock**, and press * within 1.5 seconds. If the security keyguard is activated, enter the security code when requested.

To set the keypad to lock automatically after a defined length of time when the device is not being used, select **Menu > Settings > Phone > Automatic keyguard > On**.

To answer a call when the keypad is locked, press the call key. When you end or reject a call, the keypad locks automatically.

When the device or keypad is locked, calls may be possible to the official emergency number programmed into your device.

Access codes

The security code helps to protect your device against unauthorized use. The preset code is 12345. You can create and change the code, and set the device to request the code. Keep the code secret and in a safe place separate from your device. If you forget the code and your device is locked, your device will require service. Additional charges may apply, and all the personal data in your device may be deleted. For more information, contact a Nokia Care point or your device dealer.

The PIN code supplied with the SIM card protects the card against unauthorised use. The PIN2 code supplied with some SIM cards is required to access certain services. If you enter the PIN or PIN2 code incorrectly three times in succession, you are asked for the PUK or PUK2 code. If you do not have them, contact your service provider.

The module PIN is required to access the information in the security module of your SIM card. The signing PIN may be required for the digital signature. The restriction password is required when using the call restriction service.

To set how your device uses the access codes and security settings, select **Menu > Settings > Security**.

PUK codes

The personal unblocking key (PUK) code and the universal personal unblocking key (UPUK) code (8 digits) are required to change a blocked PIN code and UPIN code, respectively. The PUK2 code (8 digits) is required to change a blocked PIN2 code. If the

codes are not supplied with the SIM card, contact your local service provider for the codes.

Volume control



Warning:

Continuous exposure to high volume may damage your hearing. Listen to music at a moderate level, and do not hold the device near your ear when the loudspeaker is in use.

To adjust the earpiece or loudspeaker volume during a call or when listening to an audio file or the FM radio, scroll up or down.

Standby mode

When the phone is ready for use, and you have not entered any characters, the phone is in the standby mode.

1	Network signal strength	
2	Battery charge level	
3	Network name or operator logo	
4	Functions of selection keys	

The left selection key is **Go to** for you to view the functions in your personal shortcut list. When viewing the list, select **Options** > **Select options** to view the available functions, or select **Options** > **Organize** to arrange the functions in your shortcut list.

To have the phone display a list of selected features and information that you can directly access from the standby mode, select **Menu** > **Settings** > **Display** > **Home screen**.

Indicators



You have unread messages.



You have unsent, cancelled, or failed messages.



The keypad is locked.



The device does not ring for incoming calls or text messages.



An alarm is set.










The device is registered to the GPRS or EGPRS network.



A GPRS or EGPRS connection is open.



The GPRS or EGPRS connection is suspended (on hold).

-  The device is registered to a 3G (UMTS) network.
-  Bluetooth is activated.
-  All incoming calls are diverted to another number.
-  Calls are limited to a closed user group.
-  The currently active profile is timed.
-  A headset is connected to the device.
-  The device is connected to another device using a USB data cable.

Navigate the menus

The device functions are grouped into menus. Not all menu functions or option items are described here.

In the home screen, select **Menu** and the desired menu and submenu.

Exit the current menu level

Select **Exit** or **Back**.

Return to the home screen

Press the end key.

Change the menu view

Select **Menu** > **Options** > **Main menu view**.

Shortcuts

With personal shortcuts, you can get quick access to frequently used phone functions.

Select **Menu** > **Settings** > **My shortcuts**.

Assign phone functions to the selection keys

Select **Right selection key** or **Left selection key** and a function from the list.

Select shortcut functions for the scroll key

Select **Navigation key**. Scroll to the desired direction, and select **Change** or **Assign** and a function from the list.

Operator menu

Access a portal to services provided by your network operator. For more information, contact your network operator. The operator can update this menu with a service message.



Use your device without a SIM card

Some features of your device may be used without inserting a SIM card, such as games. Features that are unavailable when the flight profile is activated cannot be selected in menus.

Write text

Text modes

To enter text (for example, when writing messages) you can use traditional or predictive text input.

When you write text, press and hold **Options** to switch between traditional text input, indicated by  and predictive text input, indicated by . Not all languages are supported by predictive text input.

The character cases are indicated by **AbC**, **abc**, and **ABC**.

To change the character case, press **#**. To change from the letter to number mode, indicated by **123**, press and hold **#**, and select **Number mode**. To change from the number to the letter mode, press and hold **#**.

To set the writing language, select **Options** > **Writing language**.

Traditional text input

Press a number key, 2-9, repeatedly until the desired character is displayed. The available characters depend on the selected writing language.

If the next character you want is located on the same key as the present one, wait until the cursor appears, and enter the character .

To insert common punctuation marks and special characters, press **1** repeatedly. To access the list of special characters, press *****. To insert a space, press **0**.

Predictive text input

Predictive text input is based on a built-in dictionary to which you can also add new words.

- 1 Start writing a word, using the keys **2** to **9**. Press each key only once for one letter.
- 2 To confirm a word, scroll right or add a space.
 - If the word is not correct, press ***** repeatedly, and select the word from the list.
 - If the **?** character is displayed after the word, the word you intended to write is not in the dictionary. To add the word to the dictionary, select **Spell**. Enter the word using traditional text input, and select **Save**.

16 Contacts

- To write compound words, enter the first part of the word, and scroll right to confirm it. Write the last part of the word, and confirm the word.
- 3 Start writing the next word.

Nokia account and Nokia's Ovi services

You can create a Nokia account either on your PC or on your cellular phone.

With Nokia's Ovi services and your Nokia account, you can, for example:


- Get a free Ovi Mail account
- Download games, applications, videos, and ringing tones from Ovi Store

The available services may also vary by country or region, and not all languages are supported.

To learn more about Ovi, go to www.ovi.com.


To create a Nokia account later, use your device to access an Ovi service, and you are prompted to create an account.

About Ovi Store

 In Ovi Store, you can download mobile games, applications, videos, images, themes, and ringing tones to your device. Some items are free of charge; others you need to pay for with your credit card or in your phone bill. The availability of payment methods depends on your country of residence and your network service provider. Ovi Store offers content that is compatible with your cellular phone and relevant to your tastes and location.

Contacts

Select **Menu** > **Contacts**.

You can save names and phone numbers in the device memory or on the SIM card. In the phone memory, you can save contacts with numbers and text items. Names and numbers saved in the SIM card memory are indicated with .

Add a contact

Select **Add new**.

Add details to a contact

Ensure that the memory in use is either **Phone** or **Phone and SIM**. Select **Names**, go to the name, and select **Details** > **Options** > **Add detail**.

Search for a contact

Select **Names**, and scroll through the list of contacts, or enter the first letters of the name.

Copy a contact to another memory

Select **Names**, go to the contact, and select **Details** > **Options** > **Copy number**. In the SIM card memory, you can save only one phone number per name.

Select where to save contacts, how contacts are displayed, and the memory consumption of contacts

Select **Settings**.

Send a business card

In the contacts list, go to a contact, and select **Details** > **Options** > **Send business card**. You can send and receive business cards from devices that support the vCard standard.

Calls

Make and answer a call

Make a call

Enter the phone number, including the country and area code if necessary, and press the call key. For international calls, press * twice for the international prefix (the + character replaces the international access code), enter the country code, the area code without the leading 0, if necessary, and the phone number.

The + character as replacement for the international access code may not work in all regions. In this case, enter the international access code directly.

Answer an incoming call

Press the call key.

Reject a call

Press the end key.

Adjust the volume

During a phone call, scroll up or down.

Loudspeaker

If available, you may select **Loudsp.** or **Handset** to use the loudspeaker or the earpiece of the phone during a call.



Warning:

Continuous exposure to high volume may damage your hearing. Listen to music at a moderate level, and do not hold the device near your ear when the loudspeaker is in use.

Dialing shortcuts

Assign a phone number to a number key

Select **Menu** > **Contacts** > **1-touch dialing**, scroll to a desired number (2-9), and select **Assign**. Enter the desired phone number, or select **Search** and a saved contact.

Activate speed dialling

Select **Menu** > **Settings** > **Call** > **1-touch dialing** > **On**.

Make a call using speed dialling

In the standby mode, press and hold the desired number key.

Log

To view information about your calls, messages, and data and synchronization events, select **Menu** > **Log** and the appropriate option.



Note: The actual invoice for calls and services from your service provider may vary, depending on network features, rounding off for billing, taxes, and so forth.

Messaging

You can send and receive text, multimedia, audio, and flash messages. You can also send and receive mail. The messaging services can only be used if your network or service provider supports them. Using the service or downloading content may cause transfer of large amounts of data, which may result in data traffic costs.

Text and multimedia messages

You can create a message and optionally attach, for example, a picture. Your phone automatically changes a text message to a multimedia message when a file is attached.

Text messages

Your device supports text messages beyond the limit for a single message. Longer messages are sent as two or more messages. Your service provider may charge accordingly. Characters with accents, other marks, or some language options take more space, and limit the number of characters that can be sent in a single message.

The total number of characters left and the number of messages needed for sending are displayed.

To send messages, the correct message centre number must be stored in your device. Normally, this number is set by default through your SIM card.

To set the number manually, do the following:

- 1 Select **Menu** > **Messaging** > **Message settings** > **Text messages** > **Message centers**.
- 2 Enter the name and number supplied by your service provider.

Multimedia messages

A multimedia message can contain text, pictures, and sound clips.

Only devices that have compatible features can receive and display multimedia messages. The appearance of a message may vary depending on the receiving device.

The wireless network may limit the size of MMS messages. If the inserted picture exceeds this limit, the device may make it smaller so that it can be sent by MMS.



Important: Exercise caution when opening messages. Messages may contain malicious software or otherwise be harmful to your device or PC.

For availability and subscription to the multimedia messaging service (MMS), contact your service provider.

Create a message

- 1 Select **Menu** > **Messaging** > **Create message** and a message type.
- 2 In the **To:** field, enter the recipient's number or e-mail address (network service). To select a recipient, select **Add**. You can have more than one recipient.
- 3 In the **Text:** field, write your message.
To insert a special character or a smiley, select **Options** > **Insert symbol**.
To attach content to the message, scroll to the attachment bar at the bottom of the display, and select the desired type of content. The message type changes automatically to multimedia message.
- 4 Select **Send**.



Note: The message sent icon or text on your device screen does not indicate that the message is received at the intended destination.

Service providers may charge differently depending on the message type. For details, contact your service provider.

Mail

Set up e-mail

Select **Menu** > **Messaging** > **E-mail**.

If you do not already have an e-mail account, you can create a Nokia account, which includes the Ovi Mail service.

- 1 Select **Get Ovi Mail**.
- 2 Follow the instructions.

Read, write, and send an e-mail

Select **Menu** > **Messaging** > **E-mail**.

Read an e-mail

Select an e-mail and **Open**.



Important: Exercise caution when opening messages. Messages may contain malicious software or otherwise be harmful to your device or PC.

E-mails with attachments, for example, images, are marked with a paperclip icon. Some attachments may not be compatible with your device, and cannot be displayed on your device.

View attachments

Select an attachment and **View**.

Write an e-mail

Select **Options** > **Compose New**.

Attach a file to the e-mail

Select **Options** > **Attach file**.

Send the e-mail

Select **Send**.

Close the e-mail application

Select **Sign Out**.

Chat with your friends

You can chat with other online users using your device.

You can use an existing account for an IM community that is supported by your device. If you are not registered to an IM service, you can create an account for a supported IM service, using your computer or your device. The menus may vary, depending on the IM service.

To connect to the service, select **Menu > Messaging > IMs**, and follow the displayed instructions.

Flash messages

Flash messages are text messages that are instantly displayed upon reception.



Select **Menu > Messaging**.

- 1 Select **Create message > Flash message**.
- 2 In the **To:** field, enter the recipient's number. To select a recipient, select **Add**. You can have more than one recipient.
- 3 In the **Message:** field, write your message.
To insert a special character or a smiley, select **Options > Insert symbol**.
- 4 Select **Send**.

Nokia Xpress audio messages

Create and send audio messages as multimedia messages in a convenient way.

Select **Menu > Messaging**.

- 1 Select **Create message > Audio message**. The voice recorder opens.
- 2 To record your message, select .
- 3 To stop recording, select .
- 4 In the **To:** field, enter the recipient's number. To select a recipient, select **Add**. You can have more than one recipient.
- 5 Select **Send**.

Voice messages

The voice mailbox is a network service to which you may need to subscribe. For more information, contact your service provider.

Call your voice mailbox

Press and hold **1**.

Edit your voice mailbox number

Select **Menu > Messaging > Voice messages and Voice mailbox no.**

Message settings

Select **Menu > Messaging and Message settings**.

Select from the following:

General settings — Set the font size for messages, and activate graphical smileys.

Text messages — Set up message centers for text messages and activate delivery reports.

Multimedia msgs. — Allow delivery reports and the reception of multimedia messages and advertisements, and set up other preferences related to multimedia messages.

Service messages — Activate service messages and set up preferences related to service messages.

Organizer

Alarm clock

You can set an alarm to sound at a desired time.

Set the alarm

- 1 Select **Menu > Organizer > Alarm clock**.
- 2 Set the alarm, and enter the alarm time.
- 3 To issue an alarm on selected days of the week, select **Repeat: > On** and the days.
- 4 Select the alarm tone. If you select the radio as the alarm tone, connect the headset to the device.
- 5 Set the length of the snooze time-out period, and select **Save**.

Stop the alarm

Select **Stop**. If you let the alarm sound for a minute or select **Snooze**, the alarm stops for the length of the snooze time-out period, then resumes.

Calendar and to-do list

Select **Menu > Organizer > Calendar**. The current day is framed. If there are any notes set for the day, the day is in bold.

Add a calendar note

Scroll to the date, and select **Options > Make a note**.

View the details of a note

Scroll to a note, and select **View**.

Delete all notes from the calendar

Select **Options > Delete notes > Delete all notes**.

View the to-do list

Select **Menu** > **Organizer** > **To-do list**.

The to-do list is displayed and sorted by priority. To add, delete, or send a note, to mark the note as done, or to sort the to-do list by deadline, select **Options**.

Web or Internet

You can access various internet services with your phone browser. The appearance of the web pages may vary due to screen size. You may not be able to see all the details on the web pages.

Depending on your phone, the web browsing function may be displayed as Web or Internet in the menu, hereafter referred to as Web.



Important: Use only services that you trust and that offer adequate security and protection against harmful software.

For the availability of these services, pricing, and instructions, contact your service provider.

You may receive the configuration settings required for browsing as a configuration message from your service provider.

Connect to a web service

Select **Menu** > **Internet** > **Home**. Or, in the standby mode, press and hold **0**.

After you make a connection to the service, you can start browsing its pages. The function of the phone keys may vary among different services. Follow the text guides on the phone display. For more information, contact your service provider.

Media

Camera and video

Your device supports an image capture resolution of 2048x1536 pixels.

Camera mode

Use the still image function

Select **Menu** > **Media** > **Camera**.

Zoom in or out

Scroll up or down.

Capture an image

Select **Capture**.

Set the preview mode and time

Select **Options** > **Settings** > **Photo preview time**.

Activate the self-timer

Select **Options** > **Self-timer**.

Video mode

Use the video function

Select **Menu** > **Media** > **Video camera**.

Start recording a video clip

Select **Record**.

Switch between camera and video mode

In camera or video mode, scroll left or right.

FM radio

The FM radio depends on an antenna other than the wireless device antenna. A compatible headset or accessory needs to be attached to the device for the FM radio to function properly.



Warning:

Continuous exposure to high volume may damage your hearing. Listen to music at a moderate level, and do not hold the device near your ear when the loudspeaker is in use.

Select **Menu** > **Media** > **Radio**.

Search for a neighboring station

Press and hold the scroll key to the left or right.

Save a station

Tune to the desired station, and select **Options** > **Save station**.

Switch between saved stations

Scroll left or right to switch between stations, or press the corresponding number key of the memory location of a desired station.

Adjust the volume

Scroll up or down.

Leave the radio playing in the background

Press the end key.

Close the radio

Press and hold the end key.

Voice recorder

Select **Menu** > **Media** > **Voice recorder**.

The recorder cannot be used when a data call or GPRS connection is active.

Start recording

Select the record icon.

Start recording during a call

Select **Options** > **Record**. When recording a call, hold the phone in the normal position near to your ear. The recording is saved in the Recordings folder in Gallery.

Listen to the latest recording

Select **Options** > **Play last recorded**.

Send the last recording in a multimedia message

Select **Options** > **Send last recorded**.

Music player

Your device includes a music player for listening to songs or other MP3 or AAC sound files.

**Warning:**

Continuous exposure to high volume may damage your hearing. Listen to music at a moderate level, and do not hold the device near your ear when the loudspeaker is in use.

Select **Menu** > **Media** > **Media player**.

Start or pause playing

Press the scroll key.

Skip to the beginning of the current song

Scroll left.

Skip to the previous song

Scroll left twice.

Skip to the next song

Scroll right.

Rewind the current song

Press and hold the scroll key to the left.

Fast-forward the current song

Press and hold the scroll key to the right.

Adjust the volume

Scroll up or down.

Mute or unmute the music player

Press #.

Leave the music player playing in the background

Press the end key.

Close the music player

Press and hold the end key.

Gallery

Your phone supports a digital rights management (DRM) system to protect acquired content. Always check the delivery terms of any content and activation key before acquiring them, as they may be subject to a fee.

Digital rights management

Content owners may use different types of digital rights management (DRM) technologies to protect their intellectual property, including copyrights. This device uses various types of DRM software to access DRM-protected content. With this device you can access content protected with WMDRM 10, OMA DRM 1.0, OMA DRM 1.0 forward lock, and OMA DRM 2.0. If certain DRM software fails to protect the content, content owners may ask that such DRM software's ability to access new DRM-protected content be

revoked. Revocation may also prevent renewal of such DRM-protected content already in your device. Revocation of such DRM software does not affect the use of content protected with other types of DRM or the use of non-DRM-protected content.

Digital rights management (DRM) protected content comes with an associated activation key that defines your rights to use the content.

If your device has OMA DRM-protected content, to back up both the activation keys and the content, use the backup feature of Nokia Ovi Suite.

Other transfer methods may not transfer the activation keys which need to be restored with the content for you to be able to continue the use of OMA DRM-protected content after the device memory is formatted. You may also need to restore the activation keys in case the files on your device get corrupted.

If your device has WMDRM-protected content, both the activation keys and the content will be lost if the device memory is formatted. You may also lose the activation keys and the content if the files on your device get corrupted. Losing the activation keys or the content may limit your ability to use the same content on your device again. For more information, contact your service provider.

View the Gallery contents

Select **Menu** > **Gallery**.

Settings

Profiles

Waiting for a call, but can't let your device ring? There are various settings groups called profiles, which you can customize with ringing tones for different events and environments.

Select **Menu** > **Settings** > **Profiles**.

Select the desired profile and from the following:

Activate — Activate the profile.

Customize — Modify the profile settings.

Timed — Set the profile to be active until a certain time. When the time set for the profile expires, the previous profile that was not timed becomes active.

Available options may vary.



Warning:

With the Flight profile you cannot make or receive any calls, including emergency calls, or use other features that require network coverage. To make calls, you must first activate the phone function by changing profiles. If the device has been locked, enter the lock code.

If you need to make an emergency call while the device is locked and in the Flight profile, you may be also able to enter an official emergency number programmed in your device in the lock code field and select 'Call'. The device will confirm that you are about to exit Flight profile to start an emergency call.

Tones

You can edit the tone settings of the selected active profile.

Select **Menu > Settings > Tones**. You can find the same settings in the Profiles menu.

Display

Select **Menu > Settings > Display**.

You can view or adjust the wallpaper, font size, or other features related to the device display.

Date and time

Select **Menu > Settings > Date and time**.

Set the date and time

Select **Date & time settings**.

Set the date and time format

Select **Date & time format**.

Update the time automatically according to the current time zone

Select **Auto-update of time (network service)**.

Synchronization and backup

Select **Menu > Settings > Sync & backup**.

Select from the following:

Phone switch — Synchronize or copy selected data, such as your contacts, calendar entries, notes, or messages, between your device and another device.

Create backup — Back up selected data to a connected external storage device.

Restore backup — Restore data from a backup on a connected external storage device. To view the details of a backup file, select **Options** > **Details**.

Data transfer — Synchronise or copy selected data between your device and a network server (network service).

Connectivity

Your phone has several features that allow you to connect to other devices to transmit and receive data.

Bluetooth wireless technology

Bluetooth technology allows you to connect your device, using radio waves, to a compatible Bluetooth device within 10 meters (32 feet).

This device is compliant with Bluetooth Specification 2.1 + EDR supporting the following profiles: generic access, hands-free, headset, object push, file transfer, dial-up networking, serial port, SIM access, generic object exchange, advanced audio distribution, audio video remote control, and generic audio video distribution. To ensure interoperability between other devices supporting Bluetooth technology, use Nokia approved accessories for this model. Check with the manufacturers of other devices to determine their compatibility with this device.


Features using Bluetooth technology increase the demand on battery power and reduce the battery life.

When the wireless device is in the remote SIM mode, you can only use a compatible connected accessory, such as a car kit, to make or receive calls.

Your wireless device will not make any calls, except to the emergency numbers programmed into your device, while in this mode.

To make calls, you must first leave the remote SIM mode. If the device has been locked, enter the lock code to unlock it first.

Open a Bluetooth connection

- 1 Select **Menu** > **Settings** > **Connectivity** > **Bluetooth**.
- 2 Select **My phone's name**, and enter a name for your device.
- 3 To activate Bluetooth connectivity, select **Bluetooth** > **On**.  indicates that Bluetooth connectivity is active.
- 4 To connect your device to an audio accessory, select **Conn. to audio acc.** and the accessory.
- 5 To pair your device with any Bluetooth device in range, select **Paired devices** > **Add new device**.

- 6 Scroll to a found device, and select **Add**.
- 7 Enter a passcode (up to 16 characters) on your device, and allow the connection on the other Bluetooth device.

Operating the device in hidden mode is a safer way to avoid malicious software. Do not accept Bluetooth connectivity from sources you do not trust. Alternatively, switch off the Bluetooth function. This does not affect other functions of the device.

Connect your PC to the internet

You can use Bluetooth technology to connect your compatible PC to the internet. Your device must be able to connect to the internet (network service), and your PC must support Bluetooth technology. After connecting to the network access point (NAP) service of the device and pairing with your PC, your device automatically opens a GPRS connection to the internet.

Packet data

General packet radio service (GPRS) is a network service that allows cellular phones to send and receive data over an internet protocol (IP) based network.

To define how to use the service, select **Menu > Settings > Connectivity > Packet data > Packet data conn.** and from the following:

When needed — Establish a packet data connection when needed by an application. The connection is closed when the application is closed.

Always online — Automatically connect to a packet data network when you switch the device on.

You can use your device as a modem by connecting it to a compatible PC using Bluetooth technology. For details, see the Nokia Ovi Suite documentation.

Call and phone

Select **Menu > Settings > Call**.

Divert incoming calls

Select **Call forwarding** (network service). For details, contact your service provider.

Automatically redial ten times after an unsuccessful attempt

Select **Automatic redial > On**.

Get a notification of incoming calls while you are on a call

Select **Call waiting > Activate** (network service).

Display or hide your number to the person you are calling

Select **Send my caller ID** (network service).

Set the display language

Select **Menu > Settings > Phone > Language settings > Phone language**.

Restore factory settings

To restore the device back to the default settings, select **Menu > Settings > Rest. fact. sett.**.

To reset all preference settings without deleting any personal data, select **Settings only**.

To reset all preference settings and delete all personal data, such as contacts, messages, media files, and activation keys, select **All**.

Find more help

For local services and warranty information, please refer to the separate booklet.

Support

When you want to learn more about how to use your product or you are unsure how your phone should function, go to www.nokia.com/support, or using your cell phone, nokia.mobi/support.

If this does not resolve your issue, do one of the following:

- Reboot your phone. Switch off the phone, and remove the battery. After about a minute, replace the battery, and switch on the phone.
- Update your phone software
- Restore the original factory settings

If your issue remains unsolved, contact Nokia for repair options. Go to www.nokia.com/repair, or in Latin America, www.nokia-latinoamerica.com/centrosdeservicio. Before sending your phone for repair, always back up your data.

For additional product support information, see the warranty and reference leaflet included with your Nokia phone.

About device software updates

With device software updates, you can get new features and enhanced functions for your device. Updating the software may also improve your device performance.

It is recommended that you back up your personal data before updating your device software.



Warning:

If you install a software update, you cannot use the device, even to make emergency calls, until the installation is completed and the device is restarted.

Downloading software updates may involve the transmission of large amounts of data (network service).

Make sure that the device battery has enough power, or connect the charger before starting the update.

After you update your device software, the instructions in the user guide may no longer be up to date.

Update device software using your device

Want to improve the performance of your device and get application updates and great new features? Update the software regularly to get the most out of your device. You can also set your device to automatically check for updates.

Select **Menu > Settings**.



- 1 Select **Phone > Phone updates**.
- 2 To display the current software version and check whether an update is available, select **Current sw details**.

- 3 To download and install a software update, select **Downl. phone sw.** Follow the instructions.
- 4 If the installation was cancelled after the download, select **Install sw update.**

The software update may take several minutes. If there are problems with the installation, contact your service provider.

Check for software updates automatically

Select **Auto sw update**, and define how often to check for new software updates.

Your service provider may send device software updates over the air directly to your device (network service).

Update device software using your PC

You can use the Nokia Ovi Suite PC application to update your device software. You need a compatible PC, a high-speed internet connection, and a compatible USB data cable to connect your device to the PC.

To get more information and to download the Nokia Ovi Suite application, go to www.ovi.com/suite.

Protect the environment

Save energy

You do not need to charge your battery so often if you do the following:

- Close applications and data connections, such as your Bluetooth connection, when not in use.
- Turn off unnecessary sounds, such as key tones.

Recycle



When this phone has reached the end of its working life, all of its materials can be recovered as materials and energy. To guarantee the correct disposal and reuse, Nokia co-operates with its partners through a program called We:recycle. For information on how to recycle your old Nokia products and where to find collection sites, go to www.nokia.com/werecycle, or in Latin America, www.nokia-latinoamerica.com/reciclaje, or call the Nokia Contact Center.

Recycle packaging and user guides at your local recycling scheme.

For more information on the environmental attributes of your phone, go to www.nokia.com/ecoprofile.

When you cooperate and deliver all these materials to one of the available collection sites, you contribute in helping the environment and help to ensure the health of future generations.

All electrical and electronic products, batteries, and accumulators may contain heavy metals and other toxic substances and must be taken to their respective collection sites at the end of their working life. Under no circumstances should you break open a battery or other related materials. Do not dispose of these products as unsorted municipal garbage, as this may cause severe impacts for the environment or human health. All Nokia products are in compliance to the applicable industry international production standards and to all requirements defined by the competent government agencies. For more information on the environmental attributes of your phone, go to www.nokia.com/ecoprofile.

Product and safety information

Accessories



Warning:

Use only batteries, chargers, and accessories approved by Nokia for use with this particular model. The use of any other types may invalidate any approval or guarantee, and may be dangerous. In particular, use of unapproved chargers or batteries may present a risk of fire, explosion, leakage, or other hazard.

For availability of approved accessories, please check with your dealer. When you disconnect the power cord of any accessory, grasp and pull the plug, not the cord.

Battery

Battery and charger information

Your device is powered by a rechargeable battery. The battery intended for use with this device is BL-5C . Nokia may make additional battery models available for this device. This device is intended for use when supplied with power from the following chargers: AC-3 . The exact charger model number may vary depending on the type of plug. The plug variant is identified by one of the following: E, X, AR, U, A, C, K, or B.

The battery can be charged and discharged hundreds of times, but it will eventually wear out. When the talk and standby times are noticeably shorter than normal, replace the battery. Use only Nokia approved batteries, and recharge your battery only with Nokia approved chargers designated for this device.

If a battery is being used for the first time or if the battery has not been used for a prolonged period, it may be necessary to connect the charger, then disconnect and reconnect it to begin charging the battery. If the battery is completely discharged, it may take several minutes before the charging indicator appears on the display or before any calls can be made.

Safe removal. Always switch the device off and disconnect the charger before removing the battery.

Proper charging. Unplug the charger from the electrical plug and the device when not in use. Do not leave a fully charged battery connected to a charger, since overcharging may shorten its lifetime. If left unused, a fully charged battery will lose its charge over time.

Avoid extreme temperatures. Always try to keep the battery between 15°C and 25°C (59°F and 77°F). Extreme temperatures reduce the capacity and lifetime of the battery. A device with a hot or cold battery may not work temporarily. Battery performance is particularly limited in temperatures well below freezing.

Do not short-circuit. Accidental short-circuiting can occur when a metallic object such as a coin, clip, or pen causes direct connection of the positive (+) and negative (-) terminals of the battery. (These look like metal strips on the battery.) This might happen, for example, when you carry a spare battery in your pocket or purse. Short-circuiting the terminals may damage the battery or the connecting object.

Disposal. Do not dispose of batteries in a fire as they may explode. Dispose of batteries according to local regulations. Please recycle when possible. Do not dispose as household garbage.

Leak. Do not dismantle, cut, open, crush, bend, puncture, or shred cells or batteries. In the event of a battery leak, prevent battery liquid contact with skin or eyes. If this happens, flush the affected areas immediately with water, or seek medical help.

Damage. Do not modify, remanufacture, attempt to insert foreign objects into the battery, or immerse or expose it to water or other liquids. Batteries may explode if damaged.

Correct use. Use the battery only for its intended purpose. Improper battery use may result in a fire, explosion, or other hazard. If the device or battery is dropped, especially on a hard surface, and you believe the battery has been damaged, take it to a service center for inspection before continuing to use it. Never use any charger or battery that is damaged. Keep your battery out of the reach of small children.

Take care of your device

Handle your device, battery, charger and accessories with care. The following suggestions help you protect your warranty coverage.

- Keep the device dry. Precipitation, humidity, and all types of liquids or moisture can contain minerals that corrode electronic circuits. If your device gets wet, remove the battery, and allow the device to dry.
- Do not store the device in cold temperatures.
- Do not attempt to open the device other than as instructed in the user guide.
- Unauthorized modifications may damage the device and violate regulations governing radio devices.
- Do not drop, knock, or shake the device.
- Only use a soft, clean, dry cloth to clean the surface of the device.
- Switch off the device and remove the battery from time to time for optimum performance.
- Keep your device away from magnets or magnetic fields.
- To keep your important data safe, store it in at least two separate places, such as your device, memory card, or computer, or write down important information.

During extended operation, the device may feel warm. In most cases, this is normal. If you suspect the device is not working properly, take it to the nearest authorized service facility.

Recycle

Always return your used electronic products, batteries, and packaging materials to dedicated collection points. This way you help prevent uncontrolled garbage disposal and promote the recycling of materials. Check how to recycle your Nokia products at www.nokia.com/recycling.

About Digital Rights Management

When using this device, obey all laws and respect local customs, privacy and legitimate rights of others, including copyrights. Copyright protection may prevent you from copying, modifying, or transferring images, music, and other content.

Content owners may use different types of digital rights management (DRM) technologies to protect their intellectual property, including copyrights. This device uses various types of DRM software to access DRM-protected content. With this device you can access content protected with WMDRM 1.0, OMA DRM 1.0, OMA DRM 1.0 forward lock, and OMA DRM 2.0. If certain DRM software fails to protect the content, content owners may ask that such DRM software's ability to access new DRM-protected content be revoked. Revocation may also prevent renewal of such DRM-protected content already in your device. Revocation of such DRM software does not affect the use of content protected with other types of DRM or the use of non-DRM-protected content.

Digital rights management (DRM) protected content comes with an associated license that defines your rights to use the content.

If your device has OMA DRM-protected content, to back up both the licenses and the content, use the backup feature of Nokia Ovi Suite.

Other transfer methods may not transfer the licenses which need to be restored with the content for you to be able to continue the use of OMA DRM-protected content after the device memory is formatted. You may also need to restore the licenses in case the files on your device get corrupted.

If your device has WMDRM-protected content, both the licenses and the content will be lost if the device memory is formatted. You may also lose the licenses and the content if the files on your device get corrupted. Losing the licenses or the content may limit your ability to use the same content on your device again. For more information, contact your service provider.

Some licenses may be connected to a specific SIM card, and the protected content can be accessed only if the SIM card is inserted in the device.

Additional safety information

The surface of this device is nickel-free.

Small children

Your device and its accessories are not toys. They may contain small parts. Keep them out of the reach of small children.

Operating environment

This device meets RF exposure guidelines in the normal use position at the ear or at least 1.5 centimeters (5/8 inch) away from the body. Any carry case, belt clip, or holder for body-worn operation should not contain metal and should position the device the above-stated distance from your body.

To send data files or messages requires a quality connection to the network. Data files or messages may be delayed until such a connection is available. Follow the separation distance instructions until the transmission is completed.

Parts of the device are magnetic. Metallic materials may be attracted to the device. Do not place credit cards or other magnetic storage media near the device, because information stored on them may be erased.

Medical devices

Operation of radio transmitting equipment, including wireless phones, may interfere with the function of inadequately protected medical devices. Consult a physician or the manufacturer of the medical device to determine whether they are adequately shielded from external RF energy. Switch off your device when regulations posted instruct you to do so. Hospitals or health care facilities may use equipment sensitive to external RF energy.

Implanted medical devices

Manufacturers of medical devices recommend a minimum separation of 15.3 centimeters (6 inches) between a wireless device and an implanted medical device, such as a pacemaker or implanted cardioverter defibrillator, to avoid potential interference with the medical device. Persons who have such devices should:

- Always keep the wireless device more than 15.3 centimeters (6 inches) from the medical device.
- Not carry the wireless device in a breast pocket.
- Hold the wireless device to the ear opposite the medical device.
- Turn the wireless device off if there is any reason to suspect that interference is taking place.
- Follow the manufacturer directions for the implanted medical device.

If you have any questions about using your wireless device with an implanted medical device, consult your health care provider.

Hearing aids

Some digital wireless devices may interfere with some hearing aids.

Accessibility solutions

Nokia is committed to making mobile phones easy to use for all individuals, including those with disabilities. For more information, visit the Nokia website at www.nokiaaccessibility.com.

Vehicles

RF signals may affect improperly installed or inadequately shielded electronic systems in motor vehicles such as electronic fuel injection, electronic antilock braking, electronic speed control, and air bag systems. For more information, check with the manufacturer of your vehicle or its equipment.

Only qualified personnel should service the device or install the device in a vehicle. Faulty installation or service may be dangerous and may invalidate your warranty. Check regularly that all wireless device equipment in your vehicle is mounted and operating properly. Do not store or carry flammable liquids, gases, or explosive materials in the same compartment as the device, its parts, or accessories. Remember that air bags inflate with great force. Do not place your device or accessories in the air bag deployment area.

Switch off your device before boarding an aircraft. The use of wireless teledevices in an aircraft may be dangerous to the operation of the aircraft and may be illegal.

Potentially explosive environments

Switch off your device in any area with a potentially explosive atmosphere. Obey all posted instructions. Sparks in such areas could cause an explosion or fire resulting in bodily injury or death. Switch off the device at refueling points such as near gas pumps at service stations. Observe restrictions in fuel depots, storage, and distribution areas; chemical plants; or where blasting operations are in progress. Areas with a potentially explosive atmosphere are often, but not always, clearly marked. They include areas where you would be advised to turn off your vehicle engine, below deck on boats, chemical transfer or storage facilities and where the air contains chemicals or particles such as grain, dust, or metal powders. You should check with the manufacturers of vehicles using liquefied petroleum gas (such as propane or butane) to determine if this device can be safely used in their vicinity.

Emergency calls

Make an emergency call

- 1 Ensure the device is switched on.
- 2 Check for adequate signal strength. You may also need to do the following:
 - Insert a SIM card.
 - Remove call restrictions you have activated for your device, such as call restricting, fixed dialing, or closed user group.
 - Ensure your device is not in an offline or flight profile.
- 3 To clear the display, press the end key as many times as needed.
- 4 Enter the official emergency number for your present location. Emergency call numbers vary by location.
- 5 Press the call key.
- 6 Give the necessary information as accurately as possible. Do not end the call until given permission to do so.



Important: Activate both cellular and internet calls, if your device supports internet calls. The device may attempt to make emergency calls both through cellular networks and through your internet call service provider. Connections in all conditions cannot be guaranteed. Never rely solely on any wireless device for essential communications like medical emergencies.

Certification information (SAR)

This cellular device meets guidelines for exposure to radio waves.

Your cellular device is a radio transmitter and receiver. It is designed not to exceed the limits for exposure to radio waves recommended by international guidelines. These guidelines were developed by the independent scientific organization ICNIRP and include safety margins designed to assure the protection of all persons, regardless of age and health.

The exposure guidelines for cellular devices employ a unit of measurement known as the Specific Absorption Rate or SAR. The SAR limit stated in the ICNIRP guidelines is 2.0 watts/kilogram (W/kg) averaged over 10 grams of tissue. Tests for SAR are conducted using standard operating positions with the device transmitting at its highest certified power level in all tested frequency bands. The actual SAR level of an operating device can be below the maximum value because the device is designed to use only the power required to reach the network. That amount changes depending on a number of factors such as how close you are to a network base station.

The highest SAR value under the ICNIRP guidelines for use of the device at the ear is 1.20 W/kg (RM-721 and RM-722).

Use of device accessories may result in different SAR values. SAR values may vary depending on national reporting and testing requirements and the network band. Additional SAR information may be provided under product information at www.nokia.com.

Your cellular device is also designed to meet the requirements for exposure to radio waves established by the Federal Communications Commission (USA) and Industry Canada. These requirements set a SAR limit of 1.6 W/kg averaged over one gram of tissue. The highest SAR value reported under this standard during product certification for use at the ear is 1.33 W/kg (RM-721 and RM-722) and when properly worn on the body is 0.83 W/kg (RM-721 and RM-722).

Electrical information of the device

This information applies only in Mexico.

Product	Mobile phone
Supplier	Nokia
Model	C2-01
Charger	AC-3 The following electrical characteristics applies for NOKIA chargers U only.
Input	100-240 VAC 50-60 Hz 100 mA
Output	5.0V 350 mA
Rechargeable battery supplier	Nokia
SIM card model	3,7 Vcc

Copyright and other notices

DECLARATION OF CONFORMITY

CE 0434

Hereby, NOKIA CORPORATION declares that this RM-721 or RM-722 product is in compliance with the essential requirements and other relevant provisions of Directive 1999/5/EC. A copy of the Declaration of Conformity can be found at http://www.nokia.com/phones/declaration_of_conformity/.

© 2011 Nokia. All rights reserved.

Nokia, Nokia Connecting People, Nokia Messaging and Nokia Original Accessories logo are trademarks or registered trademarks of Nokia Corporation. Nokia tune is a sound mark of Nokia Corporation. Other product and company names mentioned herein may be trademarks or tradenames of their respective owners.

Reproduction, transfer, distribution, or storage of part or all of the contents in this document in any form without the prior written permission of Nokia is prohibited. Nokia operates a policy of continuous development. Nokia reserves the right to make changes and improvements to any of the products described in this document without prior notice.



Includes RSA BSAFE cryptographic or security protocol software from RSA Security.



Java and all Java-based marks are trademarks or registered trademarks of Sun Microsystems, Inc.

This product is licensed under the MPEG-4 Visual Patent Portfolio License (i) for personal and noncommercial use in connection with information which has been encoded in compliance with the MPEG-4 Visual Standard by a consumer engaged in a personal and noncommercial activity and (ii) for use in connection with MPEG-4 video provided by a licensed video provider. No license is granted or shall be implied for any other use. Additional information, including that related to promotional, internal, and commercial uses, may be obtained from MPEG LA, LLC. See <http://www.mpegla.com>.

TO THE MAXIMUM EXTENT PERMITTED BY APPLICABLE LAW, UNDER NO CIRCUMSTANCES SHALL NOKIA OR ANY OF ITS LICENSORS BE RESPONSIBLE FOR ANY LOSS OF DATA OR INCOME OR ANY SPECIAL, INCIDENTAL, CONSEQUENTIAL OR INDIRECT DAMAGES HOWSOEVER CAUSED.

THE CONTENTS OF THIS DOCUMENT ARE PROVIDED "AS IS". EXCEPT AS REQUIRED BY APPLICABLE LAW, NO WARRANTIES OF ANY KIND, EITHER EXPRESS OR IMPLIED, INCLUDING, BUT NOT LIMITED TO, THE IMPLIED WARRANTIES OF MERCHANTABILITY AND FITNESS FOR A PARTICULAR PURPOSE, ARE MADE IN RELATION TO THE ACCURACY, RELIABILITY OR CONTENTS OF THIS DOCUMENT. NOKIA RESERVES THE RIGHT TO REVISE THIS DOCUMENT OR WITHDRAW IT AT ANY TIME WITHOUT PRIOR NOTICE.

The availability of some features may vary by region. Please contact your operator for more details.

The availability of particular products and applications and services for these products may vary by region. Please check with your Nokia dealer for details and availability of language options. This device may contain commodities, technology or software subject to export laws and regulations from the US and other countries. Diversion contrary to law is prohibited.

The third-party applications provided with your device may have been created and may be owned by persons or entities not affiliated with or related to Nokia. Nokia does not own the copyrights or intellectual property rights to the third-party applications. As such, Nokia does not take any responsibility for end-user support, functionality of the applications, or the information in the applications or these materials. Nokia does not provide any warranty for the third-party applications.

BY USING THE APPLICATIONS YOU ACKNOWLEDGE THAT THE APPLICATIONS ARE PROVIDED AS IS WITHOUT WARRANTY OF ANY KIND, EXPRESS OR IMPLIED, TO THE MAXIMUM EXTENT PERMITTED BY APPLICABLE LAW. YOU FURTHER ACKNOWLEDGE THAT NEITHER NOKIA NOR ITS AFFILIATES MAKE ANY REPRESENTATIONS OR WARRANTIES, EXPRESS OR IMPLIED, INCLUDING BUT NOT LIMITED TO WARRANTIES OF TITLE, MERCHANTABILITY OR FITNESS FOR A PARTICULAR PURPOSE, OR THAT THE APPLICATIONS WILL NOT INFRINGE ANY THIRD-PARTY PATENTS, COPYRIGHTS, TRADEMARKS, OR OTHER RIGHTS.

FCC/INDUSTRY CANADA NOTICE

Your device may cause TV or radio interference (for example, when using a telephone in close proximity to receiving equipment). The FCC or Industry Canada can require you to stop using your telephone if such interference cannot be eliminated. If you require assistance, contact your local service facility. This device complies with part 15 of the FCC rules. Operation is subject to the following two conditions: (1) This device may not cause harmful interference, and (2) this device must accept any interference received, including interference that may cause undesired operation. Any changes or modifications not expressly approved by Nokia could void the user's authority to operate this equipment.

/Issue 1.1 EN-US