

ITIFOB01

4-BUTTON KEY FOB TRANSMITTER

Operation Instructions



Linear
Building On Innovation.

USA & Canada (800) 421-1587 & (800) 392-0123
(760) 438-7000 - Toll Free FAX (800) 468-1340
www.linearcorp.com

PRODUCT DESCRIPTION

The Model ITIFOB01 is a four button, battery powered, water-resistant, transmitter designed for use with GE security systems.

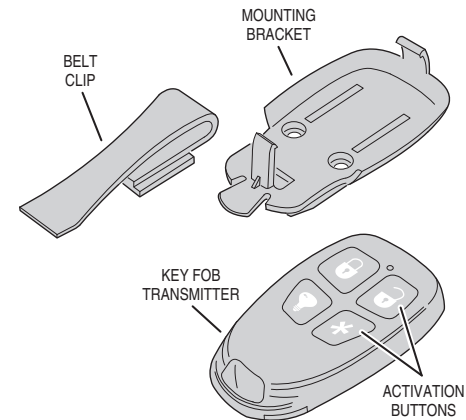
Pressing one of the buttons on the transmitter sends a digital coded wireless signal to its companion receiver and lights the red signal indicator on the transmitter. The transmitter sends variations of the code depending on which button is pressed. The code format features over 4 billion different encrypted code sequences. **To ensure sending a signal, press the transmitter button for a minimum of 2 seconds.**

Each transmitter is powered by two self-contained type CR2025 3-volt lithium batteries (included). Every activation, the transmitter sends its battery status to the receiver. If the battery is low, a low battery signal is sent to the receiver.

Receivers must be programmed to the transmitter's code before system testing and operation. Refer to the receiver's instructions for details on operation and programming.

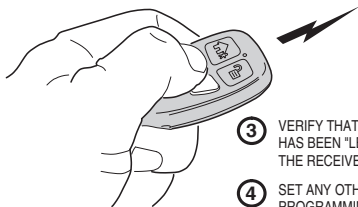
The transmitter is supplied with an optional mounting bracket and a belt clip. For stationary applications, the transmitter snaps into the mounting bracket. For portable use, the belt clip attaches to mounting bracket allowing the unit to be clipped to shirt pocket or slid onto a belt.

FEATURES



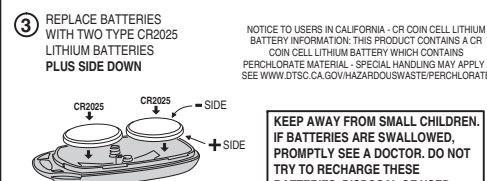
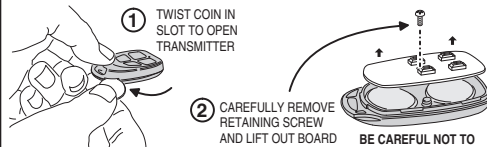
PROGRAMMING

- 1 REFER TO THE SECURITY SYSTEMS INSTRUCTIONS AND PLACE THE RECEIVER IN PROGRAM MODE
- 2 PRESS A BUTTON ON THE TRANSMITTER TO SEND A SIGNAL



- 3 VERIFY THAT THE TRANSMITTER HAS BEEN "LEARNED" BY THE RECEIVER
- 4 SET ANY OTHER SYSTEM PROGRAMMING OPTIONS FOR THE TRANSMITTER
- 5 TEST THE SYSTEM

BATTERY REPLACEMENT



- 4 REVERSE STEPS TO REASSEMBLE TRANSMITTER

NOTICE TO USERS IN CALIFORNIA - CR COIN CELL LITHIUM BATTERY INFORMATION: THIS PRODUCT CONTAINS A CR COIN CELL LITHIUM BATTERY WHICH CONTAINS PERCHLORATE MATERIAL - SPECIAL HANDLING MAY APPLY - SEE WWW.DTSC.CA.GOV/HAZARDOUSWASTE/PERCHLORATE

KEEP AWAY FROM SMALL CHILDREN. IF BATTERIES ARE SWALLOWED, PROMPTLY SEE A DOCTOR. DO NOT TRY TO RECHARGE THESE BATTERIES. DISPOSAL OF USED BATTERIES MUST BE MADE IN ACCORDANCE WITH THE WASTE RECOVERY AND RECYCLING REGULATIONS IN YOUR AREA.

LINEAR LIMITED WARRANTY

This Linear product is warranted against defects in material and workmanship for twelve (12) months. **This warranty extends only to wholesale customers** who buy direct from Linear or through Linear's normal distribution channels. Linear does not warrant this product to consumers. Consumers should inquire from their selling dealer as to the nature of the dealer's warranty, if any. **There are no obligations or liabilities on the part of Linear LLC for consequential damages arising out of or in connection with use or performance of this product or other indirect damages with respect to loss of property, revenue, or profit, or cost of removal, installation, or reinstallation.** All implied warranties, including implied warranties for merchantability and implied warranties for fitness, are valid only until the warranty expires. **This Linear LLC Warranty is in lieu of all other warranties express or implied.**

All products returned for warranty service require a Return Product Authorization Number (RPA#). Contact Linear Technical Services at 1-855-546-3351 for an RPA# and other important details.

Any changes or modifications not expressly approved by the party responsible for compliance could void the user's authority to operate the equipment.

Les changements ou modifications non approuvés expressément par la partie responsable de la conformité pourrait annuler l'autorité de l'utilisateur à faire fonctionner l'équipement.

IMPORTANT! Linear radio controls provide a reliable communications link and fill an important need in portable wireless signaling. However, there are some limitations which must be observed.

- For U.S. installations only: The radios are required to comply with FCC Rules and Regulations as Part 15 devices. As such, they have limited transmitter power and therefore limited range.
- A receiver cannot respond to more than one transmitted signal at a time and may be blocked by radio signals that occur on or near their operating frequencies, regardless of code settings.
- Changes or modifications to the device may void FCC compliance.
- Infrequently used radio links should be tested regularly to protect against undetected interference or fault.
- A general knowledge of radio and its vagaries should be gained prior to acting as a wholesale distributor or dealer, and these facts should be communicated to the ultimate users.

This device complies with FCC Part 15 and Canada Rules and Regulations. Operation is subject to the following two conditions: (1) This device may not cause harmful interference and (2) this device must accept any interference received, including interference that may cause undesired operation.

Le présent appareil est conforme aux CNR d'Industrie Canada applicables aux appareils radio exempts de licence. L'exploitation est autorisée aux deux conditions suivantes: (1) l'appareil ne doit pas produire de brouillage, et (2) l'utilisateur de l'appareil doit accepter tout brouillage radioélectrique subi, même si le brouillage est susceptible d'en compromettre le fonctionnement.