



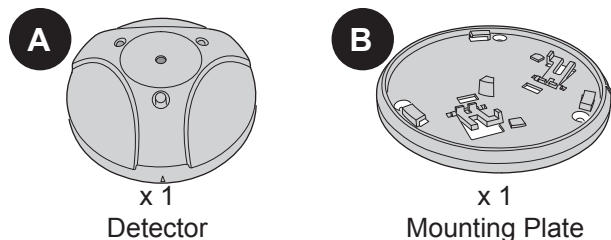
Utilitech & UT Design® is a registered trademark of LF, LLC. All rights reserved.

ITEM #0000000
 MODEL #GB00Z-1

GLASS BREAK DETECTOR

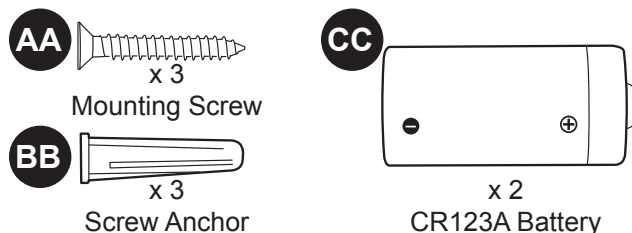
Questions?
 Call customer service at 1-000-000-0000,
 5:00 a.m. - 4:30 p.m., PST, Monday-Friday

PACKAGE CONTENTS



HARDWARE CONTENTS

Note: Hardware shown actual size.



SAFETY INFORMATION

Please read and understand this entire manual before attempting to assemble, operate, or install the product.

WARNING

Danger of explosion if batteries are installed incorrectly. Replace only with the same or equivalent type recommended by the manufacturer.

PREPARATION

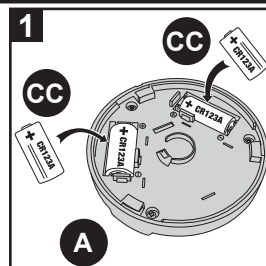
Before beginning installation of product, make sure all parts are present. Compare parts with package contents list and hardware contents list. If any part is missing or damaged, do not attempt to assemble, install or operate the product.

Estimated Installation Time: 15 minutes.

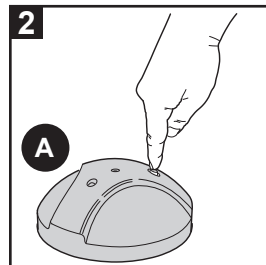
Tools required for installation (not included):
 Pencil, Phillips screwdriver, drill, 3/16" drill bit
 xxxxx

PARING INSTRUCTIONS

1. Install two Batteries (CC) into the Detector (A). **Observe polarity!**

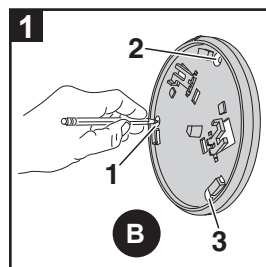


2. Bring detector within 10 feet of the system. Set system to add glass break detector device, when instructed, press the button on Detector (A) three times to pair with the system.

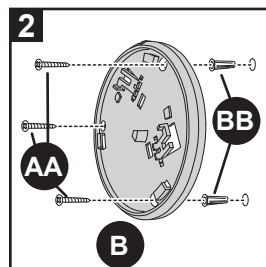


MOUNTING THE DETECTOR

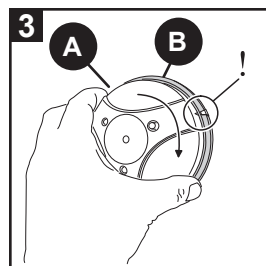
1. Choose a location on the ceiling or on an adjacent or opposite wall within 12 feet of the glass to be monitored. Use the Mounting Plate (B) as a template to mark the three mounting holes.



2. Drill three 3/16" pilot holes and insert Screw Anchors (BB). Attach Mounting Plate (B) with three Mounting Screws (AA).

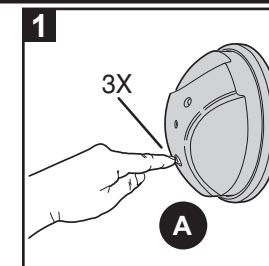


3. Match alignment marks on Detector (A) and Mounting Plate (B). Turn Detector (A) clockwise to lock onto Mounting Plate (B).



DETECTOR TESTING

1. Follow the system's instructions to select Test Mode. When instructed, press button on Detector (A) **three times**.



SPECIFICATIONS

Operating Temperature: 32° to 120° F (0° to 49° C)
Operating Relative Humidity: 5 to 95%, non-condensing
Operating Frequency: 908.42 MHz
Sensor Type: Single microphone, dual-stage
Glass Thickness: 1/8" (3.2 mm) to 1/4" (6.4 mm)

HELPFUL TIPS

- The minimum size for all glass types is 11" x 11" (28 cm x 28 cm) square. Glass must be framed, in a wall of the room or mounted in a barrier of 36" (91 cm) minimum width.
- The Detector will not lock onto the Mounting Plate unless both CR123A batteries are installed.
- The Detector sends Z-Wave® signals to the system. Z-Wave® is a registered trademark of Sigma Designs Inc. and/or its subsidiaries.

WARRANTY

Lowe's Utilitech Warranty Here??

REGULATORY NOTICE

Changes or modifications to the device may void FCC compliance.
 Les modifications apportées à l'appareil peuvent annuler la conformité Industrie Canada