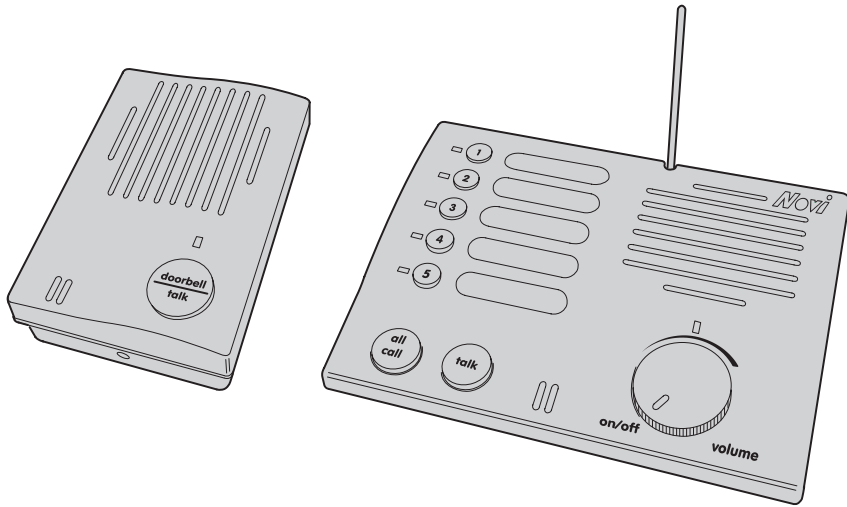


INSTRL_INSTRL_R/C - LINEAR P/N: 214601 X1 - INK: BLACK - MATERIAL: 20 LB. MEAD BOND - SIZE: 8.500" X 5.500" - SCALE: 1:1 - FOLDING: ALBUM FOLD - BINDING: SADDLE-STITCH



WIRELESS INTERCOM SYSTEM



5-CHANNEL RADIO INTERCOM

Installation & Operation Instructions

Linear[®]

(760) 438-7000 • FAX (760) 438-7043
USA & Canada (800) 421-1587 & (800) 392-0123
Toll Free FAX (800) 468-1340
www.linearcorp.com

TABLE OF CONTENTS

CONSOLE DESCRIPTION.....	a
CONSOLE FEATURES	b
DOORBELL FEATURES	1
CONSOLE ANTENNA.....	2
PROGRAMMING THE STATIONS	3-4
WALL MOUNTING THE DOORBELL.....	5
WALL MOUNTING THE CONSOLE	6
OPERATING THE DOORBELL & CONSOLE	7
OPERATING MULTIPLE CONSOLES.....	8-9
TROUBLESHOOTING	10
CHANGING SYSTEM SETTINGS	11
LINEAR LIMITED WARRANTY	12

CONSOLE DESCRIPTION

Novi's 5-channel Wireless Intercom Consoles provide a wireless audio communication link between up to five Console stations and one or two remote Wireless Doorbell Intercom units.

The intercom uses digital signals to control the stations called and provide a unique "security code" that prevents other nearby Novi 5-channel intercoms from accessing the system. Either of two radio frequencies can be selected for the intercoms to further eliminate the chance of interference from adjacent systems.

The Console features five station number pushbuttons for selecting the party to call. The ALL CALL button can be used to call all five stations. Pressing the TALK button calls the selected station(s), then controls the direction of the conversation. Each intercom user presses their TALK button to activate the microphone during the conversation.

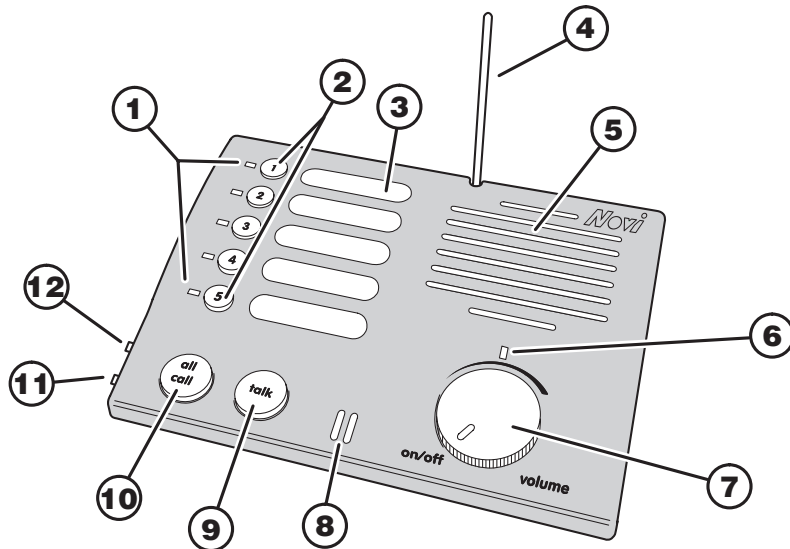
The Doorbell works with Console stations 4 or 5. Pressing the Doorbell's TALK button sounds a "ding-dong" (station 5), or "dong" (station 4) at the Console, then the conversation begins by pressing the units' talk buttons.

For privacy, a MUTE switch on each Console can be set to prevent Wireless Doorbell tones and ALL CALL messages from sounding through that Console's speaker.

The Console can be placed on a table or shelf, or mounted to a wall with the screws provided. The small, antenna adjusts for Console table or wall mounting. Power for the Console is provided by a small plug-in transformer.

The Doorbell attaches to a wall with the mounting plate provided. Two 9-volt alkaline batteries power the Doorbell intercom.

CONSOLE FEATURES



1. STATION INDICATORS

Indicators light when a station number button is pressed to show the station(s) that will be called. Indicators blink to show a call in progress. Indicators flash during conversation to show the busy stations.

2. STATION BUTTONS

Press a button to select the intercom station(s) to be called. Pressing again de-selects the station.

3. STATION LABEL AREAS

For applying labels that identify the intercom station locations.

4. ANTENNA

Receives and sends the wireless intercom signals. Antenna pivots for Console horizontal and vertical mounting.

5. SPEAKER

Sounds audio from the calling station. Volume is adjustable with the volume control.

6. POWER INDICATOR

Lights to show that Console power is switched on.

7. VOLUME CONTROL - POWER SWITCH

Switches Console power ON & OFF. Adjusts the volume of the Console's speaker.

8. MICROPHONE

High-gain microphone monitors audio from the calling station while the Console's TALK button is pressed.

9. TALK BUTTON

Press and release to call selected station(s). During conversation, press and hold when talking.

10. ALL CALL BUTTON

Press to select all stations for calling. Press again to de-select all stations.

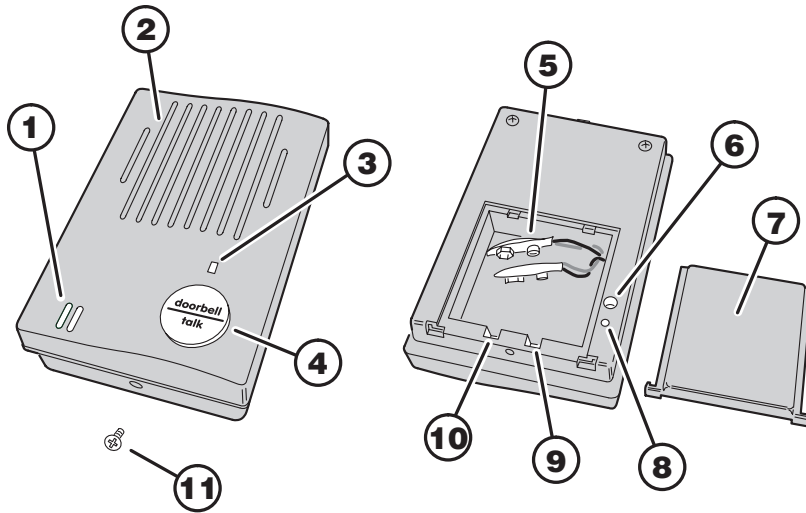
11. MUTE SWITCH

When ON, the Console will **not** sound Doorbell Intercom chime tones or respond to All Call signals.

12. FREQUENCY SWITCH

Selects frequency A or B. All intercoms used in the same system **must** be set to the same frequency.

DOORBELL FEATURES



1. MICROPHONE

High-gain microphone monitors audio while the Doorbell's TALK button is pressed.

2. SPEAKER

Sounds audio from the intercom Console. Volume is adjustable with the volume control (see Item #6).

3. POWER INDICATOR

Lights to show that Doorbell power is on. Doorbell power automatically switches ON when TALK button is pressed. The power automatically switches OFF 15 seconds after the last intercom communication.

4. DOORBELL-TALK BUTTON

Press to turn ON the Doorbell power and sound the chime at all of the intercom Consoles (Consoles with their MUTE switch ON will not sound the Doorbell chime). During intercom conversation, press and hold the DOORBELL-TALK button while speaking.

5. BATTERY CLIPS

For connection to two 9-volt *alkaline* batteries.

6. VOLUME CONTROL

Sets the volume level of the Doorbell's speaker.

7. BATTERY DOOR

Slides off rear case to expose the battery compartment, CHANNEL switch, and FREQUENCY switch.

8. PROGRAM BUTTON

Press until two beeps sound to cause the Doorbell to enter program mode.

9. FREQUENCY SWITCH

Sets the Doorbell to frequency "A" or "B". All intercoms used in the same system *must* be set to the same frequency.

10. STATION SWITCH

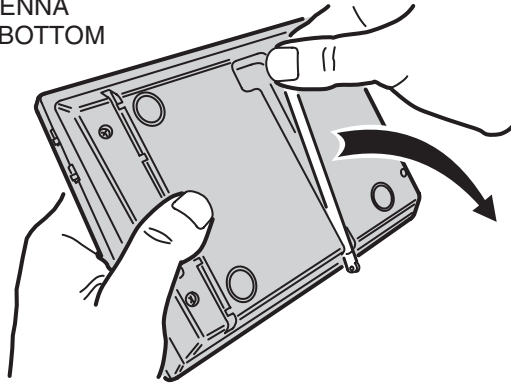
Sets the Doorbell to station 4 or 5. When set for station 5, the Doorbell will sound a "ding-dong" chime at the Console. When set for station 4, the Doorbell will sound a "dong" chime at the Console.

11. CASE LOCKING SCREW

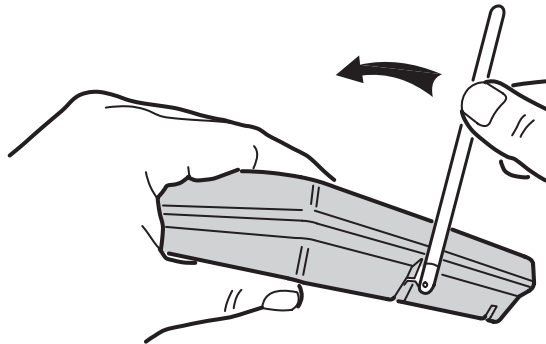
Secures the Doorbell to the mounting plate.

CONSOLE ANTENNA

SWING ANTENNA
OUT FROM BOTTOM
OF CASE



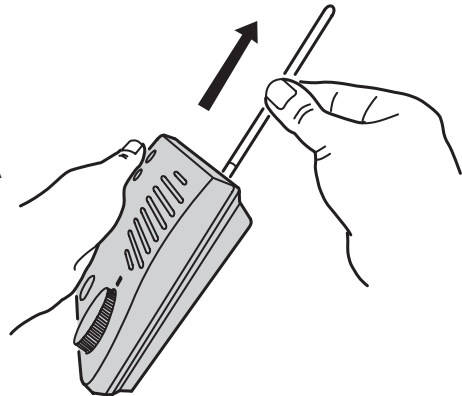
FOR TABLE OR SHELF MOUNTING...



SWING ANTENNA
ALL THE WAY UP

FOR WALL MOUNTING...

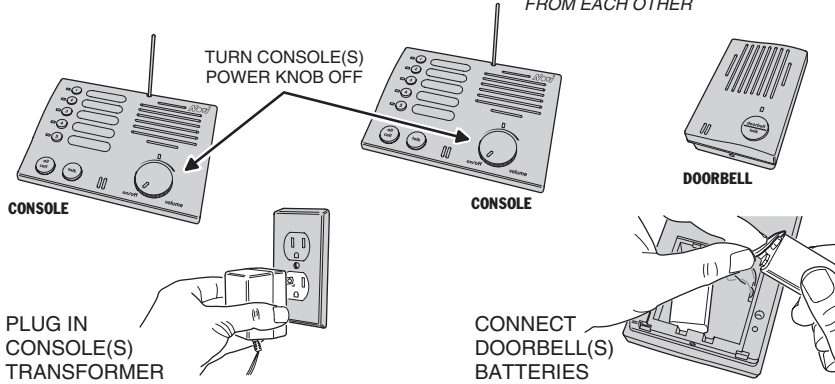
POINT ANTENNA
STRAIGHT UP
FROM CASE



PROGRAMMING THE STATIONS

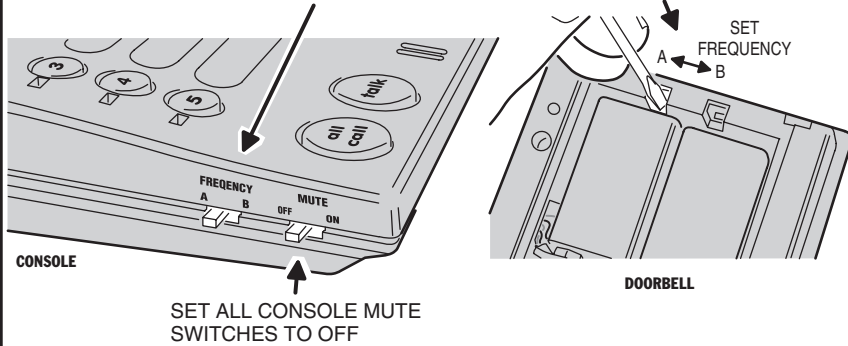
1 BRING ALL UNITS TOGETHER THAT ARE GOING TO BE USED IN THE SYSTEM

NOTE: FOR BEST PERFORMANCE KEEP UNITS AT LEAST 6 FEET APART FROM EACH OTHER

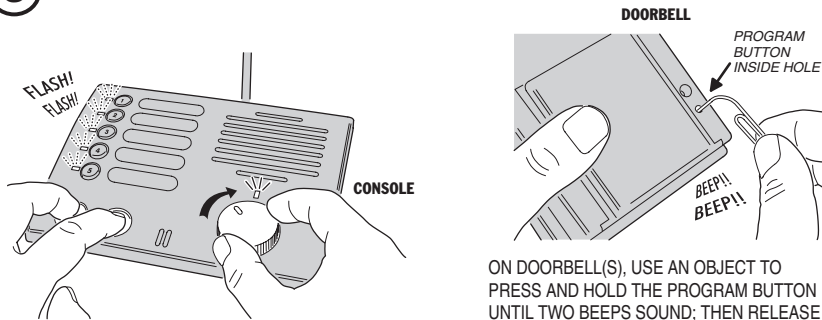


2 SET SWITCHES

SET ALL FREQUENCY SWITCHES THE SAME (A OR B)



3 SET ALL UNITS INTO PROGRAM MODE



ON CONSOLE(S), PRESS & HOLD DOWN ALL CALL & TALK BUTTONS; THEN TURN POWER ON WITH THE VOLUME KNOB. WHEN ALL STATION LIGHTS FLASH, RELEASE BUTTONS.

ON DOORBELL(S), USE AN OBJECT TO PRESS AND HOLD THE PROGRAM BUTTON UNTIL TWO BEEPS SOUND; THEN RELEASE THE PROGRAM BUTTON

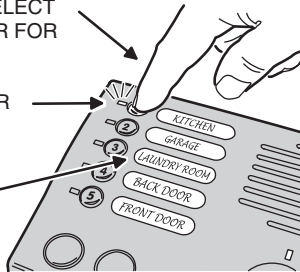
PROGRAMMING THE STATIONS

4 SET STATION NUMBERS

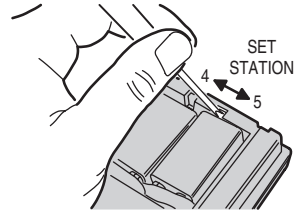
ON EACH CONSOLE, PRESS A STATION NUMBER BUTTON TO SET THAT CONSOLE'S STATION NUMBER (SELECT A DIFFERENT NUMBER FOR EACH CONSOLE)

THE STATION NUMBER INDICATOR WILL STAY LIT

APPLY LABELS TO DESCRIBE THE LOCATIONS



CONSOLE

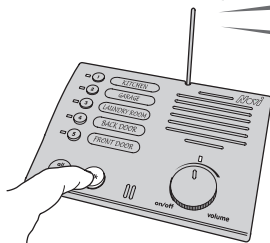


DOORBELL
DOORBELLS CAN BE SET FOR STATION 4 OR 5

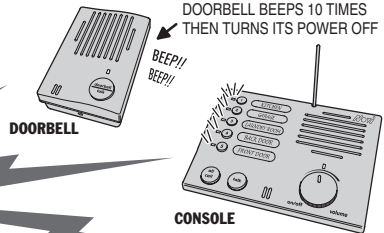
SET STATION SWITCH TO 5 FOR "DING-DONG", OR TO 4 FOR "DONG" CHIME WHEN DOORBELL BUTTON IS PRESSED (TO TELL FRONT FROM BACK DOOR)

5 SEND SYSTEM CODE

PRESS THE TALK BUTTON ON ANY CONSOLE TO SEND THE "SECURITY CODE" TO ALL OTHER UNITS



CONSOLE

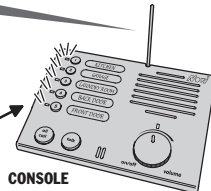


DOORBELL

CONSOLE

EACH UNIT SIGNALS WHEN THE "SECURITY CODE" IS RECEIVED

ALL CONSOLE STATION INDICATORS LIGHT FOR 2 SECONDS

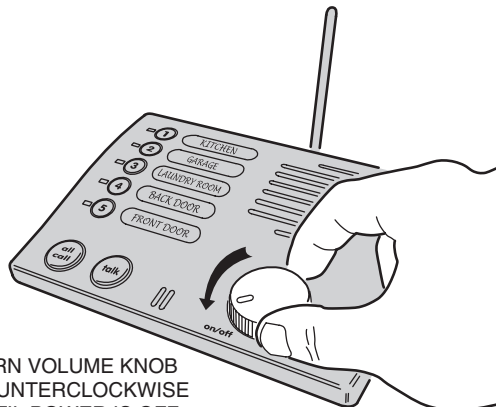


CONSOLE

6 TURN CONSOLE(S) OFF

TO COMPLETE PROGRAMMING, TURN POWER OFF ON ALL CONSOLES

NOTE: FOR THE CONSOLE TO EXIT THE PROGRAM MODE, THE POWER MUST BE SWITCHED OFF



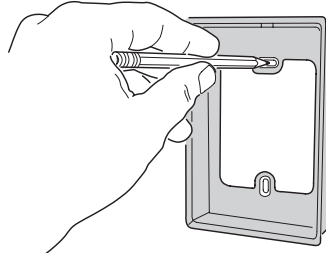
TURN VOLUME KNOB COUNTERCLOCKWISE UNTIL POWER IS OFF

WALL MOUNTING THE DOORBELL

NOTE: DO NOT MOUNT THE DOORBELL UNIT WHERE IT WILL BE EXPOSED TO EXCESSIVE MOISTURE, DUST, OR IN DIRECT SUNLIGHT

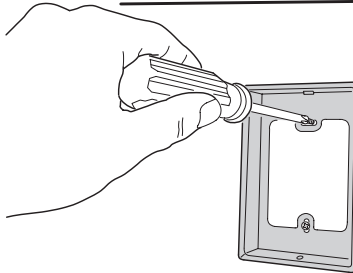
1

USE MOUNTING PLATE AND PENCIL TO MARK SCREW LOCATIONS



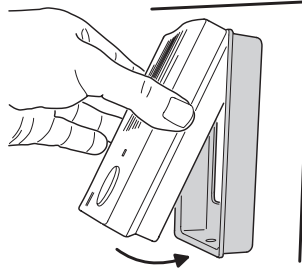
2

ATTACH MOUNTING PLATE USING THE SCREWS PROVIDED



3

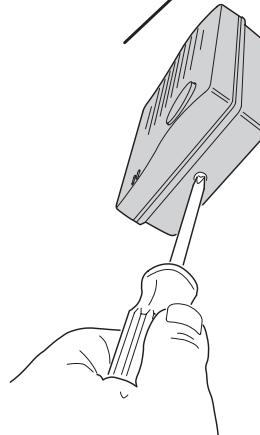
TILT DOORBELL INTO MOUNTING PLATE



4

SECURE DOORBELL TO MOUNTING PLATE WITH THE CASE LOCKING SCREW

NOTE: WAIT UNTIL AFTER ADJUSTING THE DOORBELL AUDIO VOLUME BEFORE FULLY TIGHTENING THE LOCKING SCREW

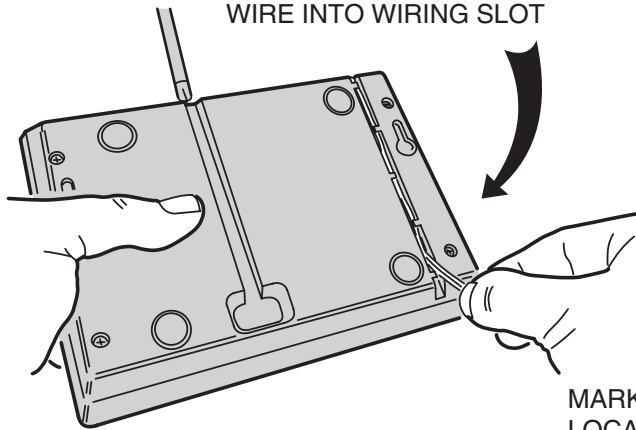


WALL MOUNTING THE CONSOLE

NOTE: DO NOT MOUNT THE CONSOLE OUTDOORS, OR WHERE IT WILL BE EXPOSED TO EXCESSIVE MOISTURE, DUST, OR IN DIRECT SUNLIGHT

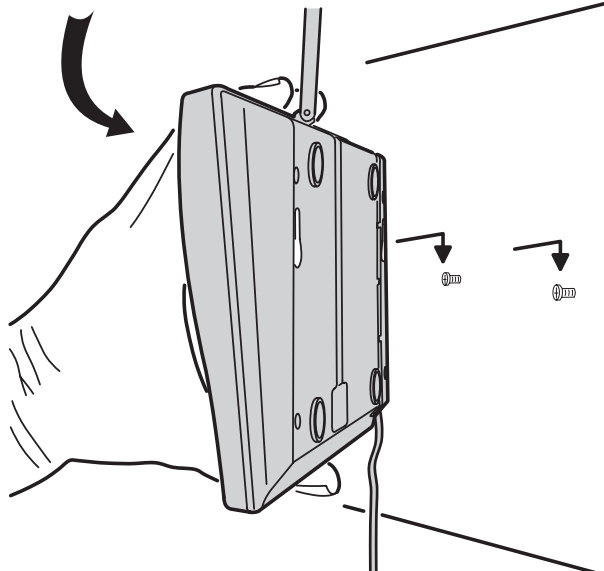
LEFT SCREW →

ROUTE TRANSFORMER WIRE INTO WIRING SLOT



MARK SCREW LOCATIONS AND DRIVE IN SCREWS LEAVING HEADS ABOUT 1/4" OUT

MOUNT CONSOLE ON WALL SCREWS



RIGHT SCREW →

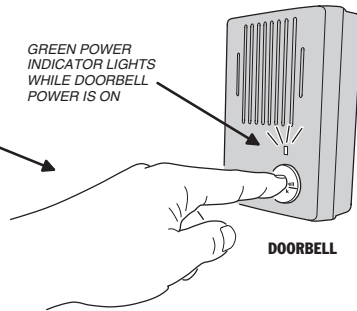
OPERATING THE DOORBELL & CONSOLE

1 THE VISITOR MAKES THE CALL

THE VISITOR PASSES THE DOORBELL-TALK BUTTON

NOTE: THE CONSOLE POWER MUST BE ON, AND THE VOLUME MUST BE SET ABOVE MINIMUM

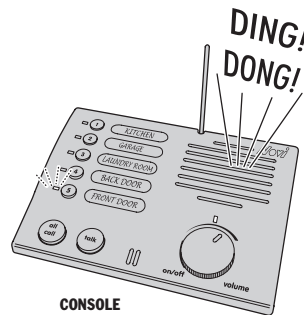
GREEN POWER INDICATOR LIGHTS WHILE DOORBELL POWER IS ON



2 CONSOLE ANNOUNCES THE VISITOR

EACH CONSOLE WILL CHIME A "DING-DONG" (FOR STATION 5) OR A "DONG" (FOR STATION 4)

NOTE: IF A CONSOLE'S MUTE SWITCH IS "ON", THE DOORBELL CHIME WILL NOT SOUND

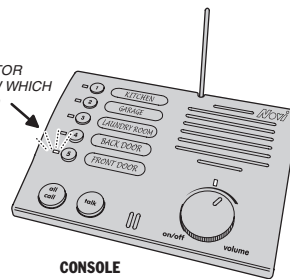


3 SEE THE VISITOR'S LOCATION

THE CONSOLE WILL INDICATE THE DOORBELL STATION THAT CALLED

NOTE: A CONSOLE MUST RESPOND WITHIN 15 SECONDS, OR THE DOORBELL UNIT WILL AUTOMATICALLY SHUT OFF

STATION INDICATOR BLINKS TO SHOW WHICH STATION CALLED



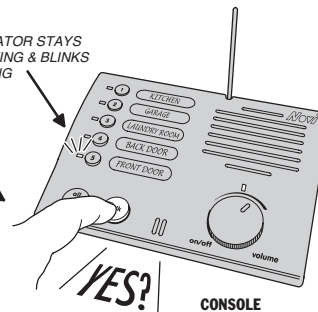
4 HAVE THE CONVERSATION

RESPOND TO THE VISITOR BY PRESSING & HOLDING THE TALK BUTTON WHILE SPEAKING, RELEASE THE TALK BUTTON AFTER SPEAKING

THE CONVERSATION GOES BACK AND FORTH, WITH EACH PERSON PRESSING THEIR OWN TALK BUTTON

NOTE: DOORBELLS WILL GO ON STANDBY AFTER 15 SECONDS OF NO TALKING

STATION INDICATOR STAYS LIT WHILE TALKING & BLINKS WHEN LISTENING



OPERATING MULTIPLE CONSOLES

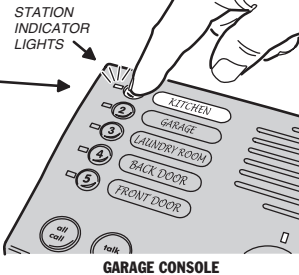
SELECTIVE STATION CALL

EXAMPLE: GARAGE IS CALLING KITCHEN

1 CHOOSE WHOM TO CALL

WITH CONSOLE POWER ON, PRESS THE BUTTON FOR THE CONSOLE THAT YOU WANT TO CALL (DOORBELLS CAN NOT BE CALLED)

NOTE: MORE THAN ONE STATION CAN BE CHOSEN, BUT ONLY ONE STATION CAN RESPOND AT A TIME



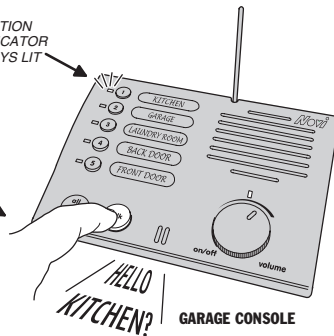
GARAGE CONSOLE

2 MAKE THE CALL

PRESS AND HOLD THE TALK BUTTON, SPEAK TOWARDS THE CONSOLE

RELEASE THE TALK BUTTON WHEN YOU ARE FINISHED TALKING

STATION INDICATOR STAYS LIT



GARAGE CONSOLE

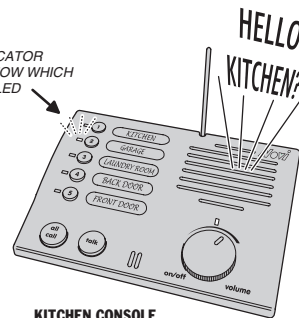
3 WAIT FOR RESPONSE

THE CONSOLE CALLED WILL SOUND THE MESSAGE

THE CALLER THEN WAITS FOR THE PERSON TO RESPOND

NOTE: THE CONSOLE CALLED HAS 20 SECONDS TO RESPOND, OR THE CALL WILL BE CANCELED

STATION INDICATOR LIGHTS TO SHOW WHICH STATION CALLED



KITCHEN CONSOLE

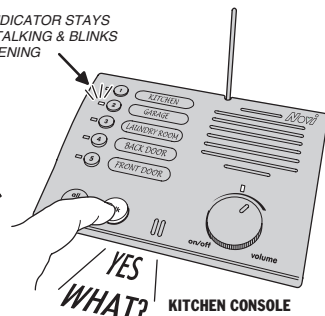
4 HAVE THE CONVERSATION

RESPOND TO THE CALLER BY PRESSING & HOLDING THE TALK BUTTON WHILE SPEAKING, RELEASE THE TALK BUTTON AFTER SPEAKING

THE CONVERSATION GOES BACK AND FORTH, WITH EACH PERSON PRESSING THEIR OWN TALK BUTTON

NOTE: CONSOLES WILL GO ON STANDBY AFTER 20 SECONDS OF NO TALKING

STATION INDICATOR STAYS LIT WHILE TALKING & BLINKS WHEN LISTENING




KITCHEN CONSOLE

OPERATING MULTIPLE CONSOLES

STATION ALL-CALL
EXAMPLE: KITCHEN IS CALLING EVERYONE

1 CHOOSE STATION ALL-CALL

WITH CONSOLE POWER ON,
PRESS THE ALL CALL BUTTON



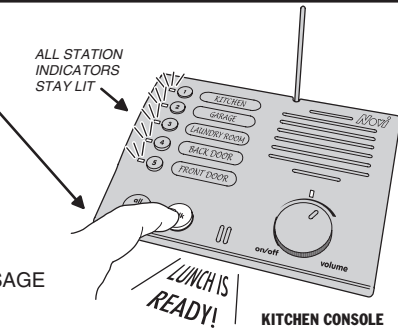
KITCHEN CONSOLE

2 MAKE THE CALL

PRESS AND HOLD THE TALK BUTTON,
SPEAK TOWARDS THE CONSOLE

RELEASE THE TALK BUTTON
WHEN YOU ARE FINISHED TALKING

NOTE: DOORBELL UNITS, AND ANY
CONSOLE WITH ITS MUTE SWITCH ON,
WILL NOT RECEIVE THE ALL-CALL MESSAGE



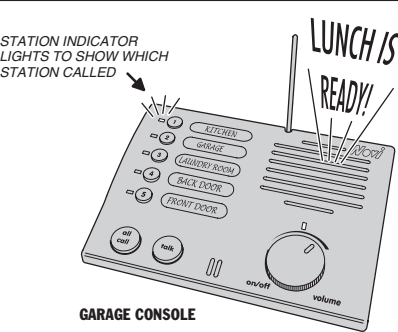
KITCHEN CONSOLE

3 WAIT FOR RESPONSE

ALL CONSOLES THAT RECEIVED THE
ALL-CALL MESSAGE WILL SOUND THE
MESSAGE

THE CALLER THEN WAITS
FOR A PERSON TO RESPOND

NOTE: THE CONSOLES CALLED HAVE
20 SECONDS TO RESPOND, OR THE
CALL WILL BE CANCELED



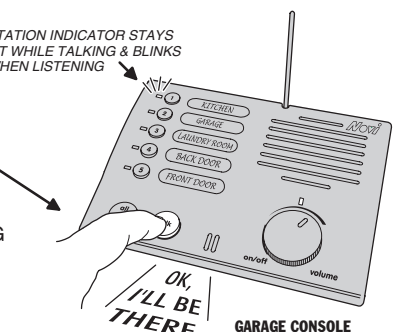
GARAGE CONSOLE

4 HAVE THE CONVERSATION

RESPOND TO THE CALLER
BY PRESSING & HOLDING
THE TALK BUTTON WHILE
SPEAKING, RELEASE THE
TALK BUTTON AFTER SPEAKING

THE CONVERSATION GOES BACK AND
FORTH, WITH EACH PERSON PRESSING
THEIR OWN TALK BUTTON

CONSOLES WILL GO ON STANDBY
AFTER 20 SECONDS OF NO TALKING



GARAGE CONSOLE

TROUBLESHOOTING

SYMPTOM	REMEDY
POWER INDICATOR WILL NOT LIGHT	BE SURE THE CONSOLE TRANSFORMER IS PLUGGED INTO AN UN-SWITCHED OUTLET BE SURE THE DOORBELL UNIT HAS FRESH 9-VOLT ALKALINE BATTERIES
EXCESSIVE HUM FROM THE SPEAKER	KEEP CONSOLE POWER CORD AWAY FROM ANTENNA MOVE DOORBELL UNIT IF IT IS NEAR AN AC LINE
SYSTEM FAILS TO WORK AT DISTANCE	BE SURE THE CONSOLE ANTENNA IS POINTED UP MOVE UNITS AROUND TO DETERMINE BETTER RECEPTION LOCATIONS
SYSTEM RECEIVES VOICE SIGNALS FROM NON-RELATED EQUIPMENT	CHANGE THE FREQUENCY SWITCHES ON EACH UNIT CHANGE THE SECURITY CODE (SEE NEXT PAGE)
SYSTEM RECEIVES ELECTRICAL NOISE	MOVE UNITS AWAY FROM COMPUTERS, ELECTRIC MOTORS, LIGHT DIMMER SWITCHES, ETC.
SYSTEM FAILS TO FUNCTION	PERFORM THE SYSTEM PROGRAMMING AGAIN MOVE UNITS AWAY FROM METAL OBJECTS
SYSTEM FUNCTIONS ERATICALLY	BE SURE THAT THERE IS AT LEAST 6 FEET SPACING BETWEEN UNITS

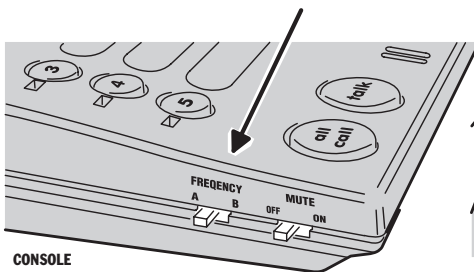
CHANGING SYSTEM SETTINGS

CHANGING THE SYSTEM'S FREQUENCY

IF ANOTHER INTERCOM SYSTEM IS COMMUNICATING WITH YOUR SYSTEM, TRY CHANGING YOUR SYSTEM'S FREQUENCY

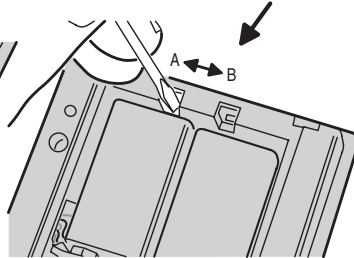
NOTE: ALL FREQUENCY SWITCHES MUST MATCH

CHANGE THE FREQUENCY SWITCH ON EACH CONSOLE



CONSOLE

CHANGE THE FREQUENCY SWITCH ON EACH DOORBELL



DOORBELL

CHANGING THE SYSTEM'S CODE

IF, AFTER CHANGING FREQUENCY, ANOTHER INTERCOM SYSTEM IS STILL COMMUNICATING WITH YOUR SYSTEM, TRY CHANGING YOUR SYSTEM'S SECURITY CODE

ON A CONSOLE:

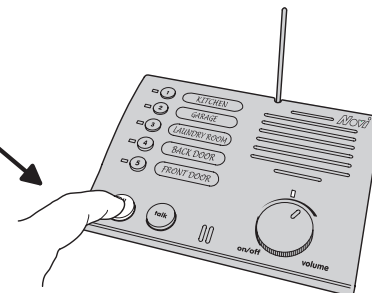
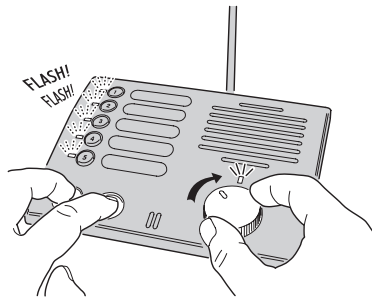
1. START WITH THE POWER OFF
2. PRESS & HOLD DOWN ALL CALL & TALK BUTTONS
3. TURN POWER ON WITH THE VOLUME KNOB
4. WHEN ALL STATION LIGHTS FLASH, RELEASE BUTTONS.

THEN:

PRESS THE ALL CALL BUTTON, THIS WILL CHANGE THE CONSOLE'S SECURITY CODE

THEN:

REFER TO THE "PROGRAMMING THE STATIONS" SECTION IN THIS MANUAL AND PERFORM STEPS #3, #5, & #6 THIS WILL PROGRAM THE NEW "SECURITY CODE" INTO ALL OF THE OTHER UNITS



LINEAR LIMITED WARRANTY

Linear Corporation (the Company) warrants to the original purchaser that products delivered hereunder will be free of defects in materials and workmanship for a period of twelve (12) months from the date of purchase.

The Company within said period shall, at its option, either repair or replace free of charge, any product or part thereof found (except batteries), upon the Company's inspection, to be so defective, and will return the repaired or replaced product to the purchaser at Company's expense.

For warranty service and shipping instructions contact WEMA at the telephone number shown below. Devices must be sent at owner's expense and be accompanied with statement of defect and proof of purchase.

This warranty is conditioned on the following:

- 1). The Company must be notified within one year of purchase and have been given the opportunity of inspection by return of any alleged defective product free and clear of all liens and encumbrances to the Company or its distributor; and
- 2). The product must not have been abused, misused or improperly maintained and/or repaired during such period; and
- 3). Such defect has not been caused by corrosion or exposure to other than ordinary wear and tear.

THE COMPANY MAKES NO OTHER WARRANTY OR REPRESENTATION OF ANY KIND WHATSOEVER INCLUDING ANY WARRANTY OF MERCHANTABILITY OR FITNESS FOR A PARTICULAR PURPOSE.

The Company's maximum liability hereunder is limited to the purchased price of the product. In no event shall the Company be liable for any consequential, indirect, incidental or special damages of any nature arising from the sale or use of the product, whether based in contract, tort, strict liability or otherwise.

Note: Some states do not allow limitations on incidental or consequential damages or how long an implied warranty lasts, so that the above limitations may not fully apply. This warranty gives specific legal rights and you may also have other rights which may vary from state to state.

For Warranty Service Call: WEMA 1-800-528-4454

IMPORTANT !!!

Linear radio controls provide a reliable communications link and fill an important need in portable wireless signaling. However, there are some limitations which must be observed.

- For U.S. installations only: The radios are required to comply with FCC Rules and Regulations as Part 15 devices. As such, they have limited transmitter power and therefore limited range.
- A receiver cannot respond to more than one transmitted signal at a time and may be blocked by radio signals that occur on or near their operating frequencies, regardless of code settings.
- Changes or modifications to the device may void FCC compliance.
- Infrequently used radio links should be tested regularly to protect against undetected interference or fault.
- A general knowledge of radio and its vagaries should be gained prior to acting as a wholesale distributor or dealer, and these facts should be communicated to the ultimate users.
- This device complies with FCC Part 15 and Industry Canada Rules and Regulations. Operation is subject to the following two conditions: (1) This device may not cause harmful interference, and (2) this device must accept any interference received, including interference that may cause undesired operation.

