



User Guide



Welcome

Thank you for choosing Numera Libris. This user guide provides key information about Libris, including Important Safety Information. Please review it carefully and keep it nearby for reference. If you have questions that are not addressed in the user guide, please call your customer service number. Libris is also available with telehealth functionality, providing safety and mobile health monitoring in one device. Your response team can provide more information.

Some features and audio prompts described in this User Guide may not apply to your device. Device settings vary by response team.

About Libris

Libris, a personal mobile responder, is cellular-enabled and designed to provide you personal emergency response services whether you are at home, away from home, and even in the shower or bath.

Libris can be activated by:

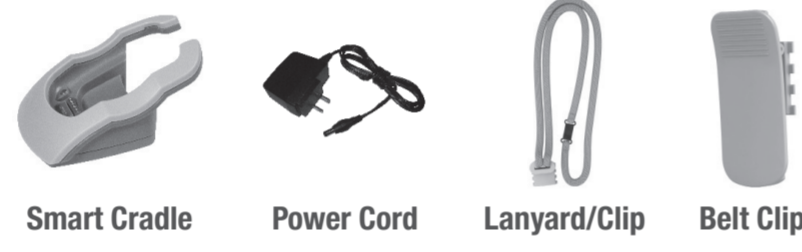
- Pressing the Libris Call Button.
- Detecting a fall while wearing the Libris (if this option is enabled).
- Triggering an optional Pendant Calling Device locally in your home while the Libris is charging in its Smart Cradle.

When activated, Libris will automatically call and allow you to speak with your response team and provide information about your location. Your response team can then notify emergency services for you, if needed.

Calling Devices

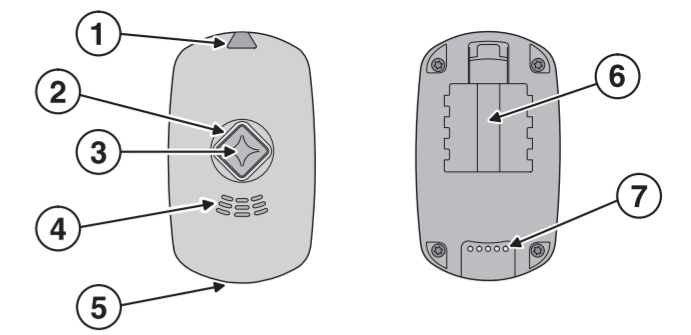


Accessories



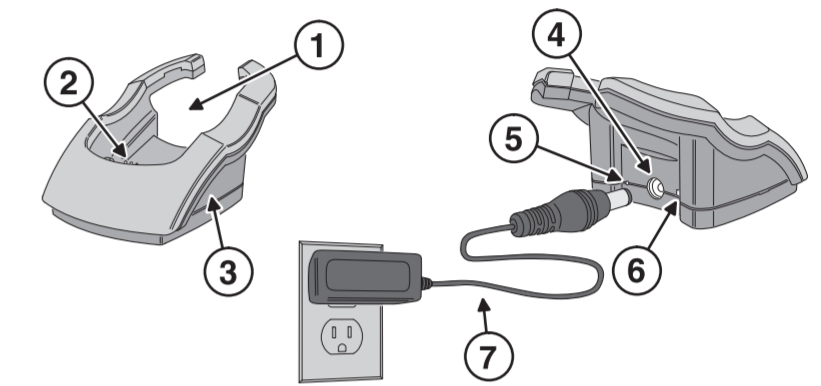
Important Safety Information

- FOR PROPER OPERATION, LIBRIS REQUIRES ADEQUATE CELLULAR COVERAGE. POOR CELLULAR COVERAGE MAY RESULT IN THE INABILITY TO PLACE A CALL OR AUTOMATICALLY DETECT A FALL. Check with your customer service team for known coverage limitations.**
- As with all location-based services, it may not always be possible to determine your location. Multi-level buildings, parking garages, and even dense urban areas can make it difficult for satellites and cell phone towers to determine your exact location.**
- In an emergency, please provide your response team with as much information as possible about your location.**
- Libris is not a replacement for regular contact with caregivers or access to an alternative means of placing an emergency call.**
- While the fall detection system performs well, no such system is 100% reliable. If you experience a fall that causes actual or potential injury, do not wait for the automatic call. You should always press the Call Button manually in an emergency if you are able.**
- Libris requires adequate battery charge for proper operation. Low battery may result in the inability to place a call, automatically detect a fall, and/or properly locate you automatically during an emergency.**
- Libris is designed to be highly water-resistant, not waterproof. Usage other than as directed may result in the inability to place a call, automatically detect a fall, and/or properly locate you automatically during an emergency.**
- Use only the Numera-provided Smart Cradle and Power Cord. Keep the Smart Cradle and Power Cord in good condition and located where they do not pose a safety hazard.**
- Use only the Numera-provided Lanyard. To reduce risk of strangulation, the Libris Lanyard is designed to break apart under certain conditions. Any cord worn around the neck, however, can pose a risk of strangulation, including the possibility of serious injury and death. Libris users and caregivers should exercise care with the Lanyard to ensure it does not get caught or tangled in wheelchairs, walkers and other such equipment.**
- Do not modify or dismantle Libris at any time, as this will void the warranty. The battery in Libris is not designed to be removed or replaced. There is a risk of explosion if the battery is tampered with, replaced with an incorrect type or manipulated in any way.**
- Hold Libris a minimum of 1 inch away from your body with the microphone near your mouth to complete an emergency call.**
- Test this System weekly. It is strongly recommended that you test this equipment at least weekly to ensure the System is working properly.**
- Each user in the household must have their own Libris and Smart Cradle. An optional Pendant Calling Device may not place an emergency call for you if another user's Libris is in your Smart Cradle.**
- In case there is more than one subscriber in a household, contact your customer service for details on operation in a multi-subscriber environment. All Libris users in a single household must use the same service provider.**
- An optional Pendant Calling Device cannot place an emergency call if the Smart Cradle has not been programmed to recognize the optional Pendant Calling Device.**



Libris Overview

1. Cellular Indicator shows cellular signal strength
2. Battery Indicator, which surrounds the Call Button, shows battery status
3. Call Button, when pushed, initiates a two-way call to your response team
4. Speaker allows you to hear your response team
5. Microphone allows response team to hear you
6. Clip Lock enables you to affix a Lanyard/Clip or Belt Clip
7. Charging Pins connect Libris to the Smart Cradle (be sure to keep these clean)



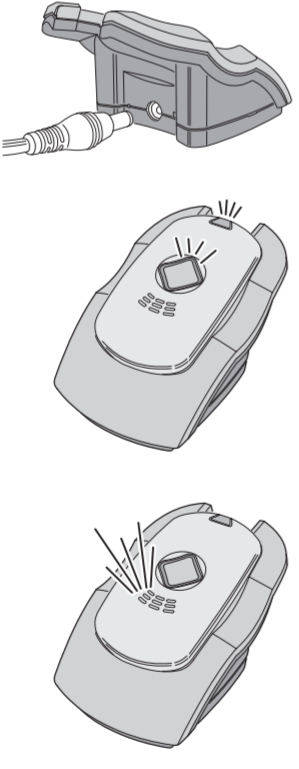
Smart Cradle Overview

1. Smart Cradle is for holding Libris while charging or when using optional Pendant Calling Devices
2. Charging Pins connect Smart Cradle to the Libris (be sure to keep these clean)
3. Internal UHF radio receiver is for local monitoring of optional Pendant Calling Devices
4. Power Port is where the low voltage barrel connector of the Power Cord connects to the Smart Cradle
5. Program Indicator, lights red while pairing optional Pendant Calling Devices
6. Program Button is used the pair optional Pendant Calling Devices to the Smart Cradle
7. Power Cord connects the Smart Cradle's Power Port to a standard wall outlet

Activation and Set Up

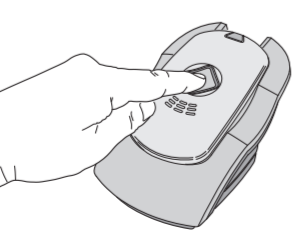
Step 1: Activate Libris

1. Plug the small round end of the Power Cord into the Power Port located in the back of the Smart Cradle. Plug the large end of the Power Cord into a **non-switched** standard wall outlet (an outlet not controlled by a wall switch).
2. Place Libris into the Smart Cradle. While charging, the Cellular and Battery Indicators will be on and show your current cellular signal strength and level of battery charge.
3. Libris will automatically turn on when placed in the Smart Cradle and will play a short start up tone, followed by a message indicating it is ready for its first use: "We are activating your personal mobile responder. We will notify you when activation is complete." Libris will automatically receive any updates and, once activated on the cellular network, will say: "Activation is now complete. We are resetting your personal mobile responder so it is ready for your use. One moment please." Allow up to a minute for Libris to restart.
4. Libris will then play a message: "This personal mobile responder will notify your response team when it detects a fall. With one touch of the call button your response team will be available to assist you and will pinpoint your location so help can reach you."



Step 2: Call to Complete Set Up

1. To register your personal mobile responder with your response team, Libris will say: "It's time to meet your response team. Please press and hold the Call Button down to connect to your response team now."
2. With Libris in the Smart Cradle, press and hold the Call Button until Libris initiates the call. Libris can remain in the Smart Cradle during the call to your response team.
3. Listen for the audio message: "Calling your response team now."
4. When you complete the call with your response team, Libris will be set up.



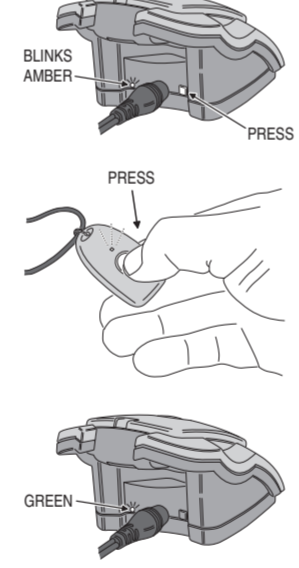
Important: Libris is not ready for use until you have completed the set up call with your response team and, following that call, have charged Libris in the Smart Cradle for 4 hours.

Note: If Libris does not power on and begin the activation process or cannot detect a cellular network, call your customer service number.

Step 3: Add Optional Pendant Calling Devices

The Libris Smart Cradle can be programmed to recognize optional Pendant Calling Devices. To add optional Pendant Calling Devices:

1. Be sure the Libris is in the Smart Cradle and the Smart Cradle is powered on.
2. Press and release the Program button on the rear of the Smart Cradle. The Program indicator will blink amber.
3. Within 20 seconds, activate a Pendant.
4. The Program indicator should light green when the Pendant is recognized.
5. Repeat Steps 1-4 for up to 8 additional Pendants.



Important: When using optional Pendant Calling Devices, the Smart Cradle should be installed centrally located in the residence.

Step 4: Testing Optional Pendant Calling Devices

If optional Pendant Calling Devices are added, they must be tested throughout the installation to determine their usable locations. Use two people for this test:

Caution: Before testing, call customer service to notify them that you will be testing.

1. Be sure the Libris is in the Smart Cradle and the Smart Cradle is powered on.
2. Have one person with the Pendant go to various test locations around the residence where the Pendant might be used and press the button on the Pendant.
3. Have the other person stand by the Libris. With each test, listen for the chime alert and the audio message: "Calling your response team now", confirm each test was received by the response team.
4. Note any locations that fail the test. **The Pendant should not be relied on at any locations that fail the test.**



Important: Pendant Calling Devices can only place an emergency call if the Libris is resting in the Smart Cradle and the Smart Cradle Power Cord is plugged into AC power.

Important: Pendant Calling Devices do not have a speaker or microphone, talk to the response team through the Libris unit. If an emergency call is placed by an Pendant Calling Device when you are not nearby the Libris in its Smart Cradle, you may not be able to hear the response team, and the response team may not be able to hear you.

Battery Indicator

The Battery Indicator, which surrounds the Call Button, shows the level of battery charge.

- When the Battery Indicator is green, Libris is adequately charged.
- When the Battery Indicator is amber, Libris is moderately charged.
- When the Battery Indicator is red, the battery charge is low. Consider charging soon.

Battery Indicator	Status*	Action Required
Green	Good	Ready for use
Amber	Moderate	No action needed
Red	Low	Charge soon

*The Libris battery is designed to operate on a single charge for 36 hours but may be reduced as a result of user activity, cellular coverage, talk time, device-specific settings, and device life.

Important: Libris requires an adequate battery charge to function properly. Prior to use, please charge Libris at least 4 hours. We recommend charging the device each night.

Cellular Indicator

The Cellular Indicator on top of Libris shows cellular signal strength.

- When the Cellular Indicator is green, Libris has a strong signal.
- When the Cellular Indicator is amber, Libris has a moderate signal.
- When the Cellular Indicator is red, Libris has no signal. Move to an area where you get a cellular signal. Libris will not function properly without an adequate cellular signal.

Cellular Indicator	Strength*
Green	Strong
Amber	Moderate
Red	No signal

*A cellular signal may not be available in all areas.

Indicator Light Settings

The cellular and battery indicator light settings may be configured by your response team to flash at a regular interval or activate by quickly pressing the Call Button.

Sleep Mode

Any time Libris is placed in the Smart Cradle, it will enter Sleep Mode cycles for approximately one hour. During this time, the cellular signal strength indicator light will turn off or flash red. Libris will automatically exit Sleep Mode if the Call Button is pressed, the device is removed from the Smart Cradle, or it is between Sleep Mode cycles.

Important: Libris requires an adequate cellular signal to function properly. Check with your customer service team for known coverage limitations.

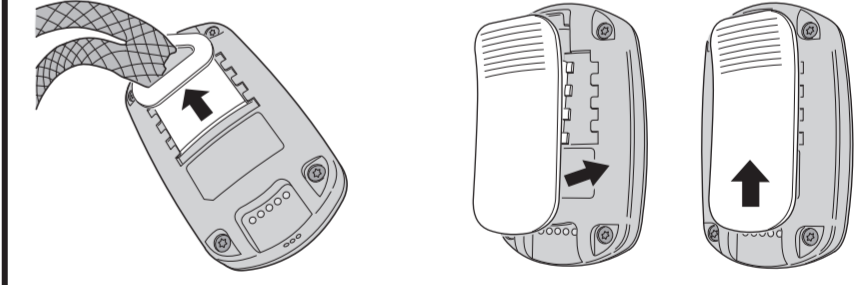
Wearing Libris

Libris can be worn on a belt using the Belt Clip, or as a pendant around your neck using the Lanyard/Clip. If worn with the Lanyard, Libris should be worn under clothing to prevent excess movement of the device.

Important: Libris requires a vertical position with the Call Button facing away from the body to operate properly.

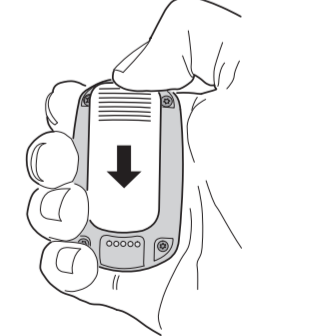
Attaching Belt Clip or Lanyard/Clip

1. Align the notched side of the Clip with the notched area on the back.
2. Press inward until the Clip notches are nested within the Libris notches.
3. Firmly push the Clip toward the top of the device. It is secure when you hear a click or you can no longer see the notches on the Clip.



Removing the Clip

1. Hold Libris in your hand as shown, with the Call Button facing the palm of your hand.
2. Forcefully push downward on the Clip with your thumb.



Turning On and Off

To turn Libris on, press the Call Button and hold it until the Battery Indicator flashes. Libris will play music while it starts up. Once connected, Libris will play a message: "Your personal mobile responder is ready."

Placing Libris into the Smart Cradle will turn it on automatically. Start-up audio prompts are silenced while this function is carried out in the Smart Cradle.

To turn Libris off, press the Call Button twice, holding down the second press for 7 seconds until Libris plays a message announcing that you have requested to turn it off. It will ask you to confirm by pressing the Call Button one more time. If done correctly, Libris will play the following message: "Powering off now. Good bye."

Note: When you first receive Libris, leave it in the Smart Cradle for 4 hours.

Emergency Calls

Place a Call Manually

To make an emergency call yourself using Libris:



- **Step 1.** Press and hold the Call Button once.

- **Step 2.** Listen for the message: "Calling your response team now. Please hold the device and position the microphone near your mouth to complete your call."



- **Step 3.** Your response team will answer your call, talk to you to assess your needs, and notify emergency services if appropriate.

Important: Optional Pendant Calling Devices will only operate within a limited distance from the Smart Cradle. Typically, the distance will be 300 feet open-air, line-of-sight when no obstructions are present. During typical usage in common residential environments, the maximum recommended distance is 150 feet from the Smart Cradle.

Important: During a power outage, the Smart Cradle will not be able to receive signals from Optional Pendant Devices, use the Libris device to call for help if needed during a power outage.

Automatic Call if a Fall is Detected

If the fall detection option has been enabled, when Libris detects a potential fall while you are wearing the Libris, it is designed to automatically call your response team:

- If Libris has detected a potential fall, it will announce: "A fall is detected. Calling your response team now. Please hold the device and position the microphone near your mouth to complete your call."
- If you have fallen and require assistance, push the Call Button once manually and do not wait for Libris to automatically place the call.



Important: Libris requires adequate battery charge and cellular signal to make an emergency call. Some falls may not be detected even with adequate battery charge and cellular signal.

Terms of Use

BY ACTIVATING YOUR NUMERA LIBRIS ("Libris"), YOU ("User") AGREE TO THESE TERMS OF USE ("Terms of Use"), WHICH GOVERN YOUR USE OF NUMERA LIBRIS. PLEASE READ THEM AND THE IMPORTANT SAFETY INFORMATION IN THIS USER GUIDE CAREFULLY.

Numeria Libris contains software code that is protected by U.S. and international copyright laws. Numeria retains ownership to all copyrights. Users have a limited license to use Libris only in accordance with the Terms of Use in this user guide. Any modification, copying, reverse engineering, or other use that is not authorized by law, by this license, or by the express written consent of Numeria is strictly prohibited. Unauthorized reproduction or distribution of copyrighted materials in the United States is subject to civil and criminal remedies pursuant to Title 17 of the United States Code.

Numeria reserves the right to revise and update these Terms of Use at any time. User should review these Terms of Use periodically as your continued use of Libris means you accept such changes and additional terms that may apply.

General Disclaimers

- For proper operation, Libris requires adequate cellular coverage. Poor cellular coverage may result in the inability to place a call and automatically detect a fall.
- In an emergency, User should provide the response team with as much information as possible about their location.
- Libris is not a replacement for User's regular contact with caregivers or access to an alternative means of placing an emergency call.
- While the fall detection system performs well, no such system is 100% reliable. If User experiences a fall that causes actual or potential injury, do not wait for the automatic call. User should always press the Call Button manually if able.
- Libris requires adequate battery charge for proper operation. Low battery may result in the inability to place a call, automatically detect a fall, and/or properly locate User automatically during an emergency.
- Libris utilizes both Global Positioning System (GPS) and network Location Based Services (LBS) in order to find User's current location. By activating the Libris product, User agrees to allow Numeria and their affiliates to use this information to provide services to them in the case of an emergency response.
- Libris provides User's location to a response center in order to respond to an event requiring assistance. By activating the Libris product, User agrees to allow Libris to provide the response center with User's location.
- By activating Libris, User consents to the use of their personally identifiable information as described in Numeria's privacy policy and notice, located at www.numeria.com/privacy.
- Libris Lanyards are designed to break apart under certain conditions; however, any cord worn around the neck can pose a risk of strangulation, including the possibility of serious injury or death.
- Libris does not provide medical advice. User should always consult his or her physician or other healthcare professional with any question regarding any medical or mental health condition, or for specific guidance regarding nutrition or physical activity.

FCC Part 15

This device complies with Part 15 of the FCC Rules. Operation is subject to the following two conditions: (1) this device may not cause interference, and (2) this device must accept any interference, including interference that may cause undesired operation of the device.

This equipment has been tested and found to comply with the limits for a Class B digital device, pursuant to Part 15 of the FCC Rules, and the Canadian Department of Communications Equipment Standards titled, "Digital Apparatus," ICES-003. These limits are designed to provide reasonable protection against harmful interference in a residential installation. This equipment generates, uses and can radiate radio frequency energy and, if not installed and used in accordance with the instructions, may cause harmful interference to radio communications. However, there is no guarantee that interference will not occur in a particular installation. If this equipment does cause harmful interference to radio or television reception, which can be determined by turning the equipment off and on, the user is encouraged to try to correct the interference by one or more of the following measures:

- Reorient or relocate the receiving antenna.
- Increase the separation between the equipment and receiver.
- Connect the equipment into an outlet that is on a different circuit from the one to which the receiver is connected.
- Consult the dealer or an experienced radio/TV technician for help.

Changes or modifications not expressly approved by the party responsible for compliance could void the user's authority to operate the equipment.

This device complies with Industry Canada license-exempt RSS standard(s). Operation is subject to the following two conditions: (1) this device may not cause interference, and (2) this device must accept any interference, including interference that may cause undesired operation of the device.

Le présent appareil est conforme aux CNR d'Industrie Canada applicables aux appareils radio exempts de licence. L'exploitation est autorisée aux deux conditions suivantes: (1) l'appareil ne doit pas produire de brouillage, et (2) l'utilisateur de l'appareil doit accepter tout brouillage radioélectrique subi, même si le brouillage est susceptible d'en compromettre le fonctionnement.

System Care

System Supervision

Supervision works to automatically notify the service provider to potential system or optional Pendant Calling Device trouble. Local indications will also provide notification in the case of prolonged trouble.

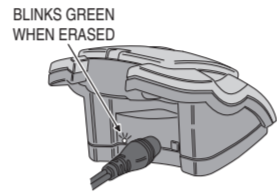
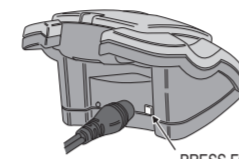
If the system stops providing local chime tones, voice annunciations, or the indicators on the Libris stop illuminating as described in this manual, contact customer service to determine if the system is operating properly. Customer service will provide instructions on how to test and/or return the unit.

Removing Optional Pendant Calling Devices

In case one or more optional Pendant Calling Devices ("sensors") are no longer being used with the Libris (due to being lost, or replaced), the Libris Smart Cradle's memory will need to be erased to remove the unused device(s):

- Be sure the Libris is in the Smart Cradle and the Smart Cradle is powered on.
- Press and HOLD the Program button on the rear of the Smart Cradle FOR 10 SECONDS.
- The Program indicator will blink green and the Libris will announce "No sensors learned; sensor list empty" when the memory is erased.
- If replacing an optional Pendant Calling Device, refer to Steps 3 & 4 on the reverse side of these instructions to program the Smart Cradle.

NOTE: Erasing the Smart Cradle's memory will remove ALL Pendant Calling Devices from the memory.



Audio Messages

Libris will deliver an alert tone and the following audio messages to notify you of system changes.

Audio Msg.	"Calling your response team now. Please hold the device and position the microphone near your mouth to complete your call."
Meaning	Libris is establishing a connection with your response center.
Audio Msg.	"Ending your call now."
Meaning	The connection with your response center is ending.
Audio Msg.	"A fall is detected. Calling your response team now. Please hold the device and position the microphone near your mouth to complete your call."
Meaning	Libris has detected a fall and is automatically calling your response team.
Audio Msg.	"Your personal mobile responder is powering off. Please confirm by pressing the center button again."
Meaning	Warning that pushing the Call Button again will turn Libris off and access to emergency help will be lost.
Audio Msg.	"Your response team is initiating a call. They will be with you in a moment."
Meaning	Your response team is calling your Libris.
Audio Msg.	"Charge your personal mobile responder soon."
Meaning	Libris battery charge is low; place Libris in the Smart Cradle for 4 hours.
Audio Msg.	"Charge your personal mobile responder NOW. Please place your personal mobile responder in the Charger now."
Meaning	Libris battery charge is critically low; place Libris in the Smart Cradle immediately and leave in Smart Cradle for 4 hours.
Audio Msg.	"Calling your response team now. Please hold the device and position the microphone near your mouth to complete your call. To cancel, press the Call Button twice and hold for 7 seconds."
Meaning	A call to your response team has been initiated. To cancel a call, press the Call Button twice and hold during the second press for 7 seconds.
Audio Msg.	"No cellular coverage. Your personal responder cannot contact your response team but will continue to attempt a call. Placing your personal responder in the charger will cancel the call."
Meaning	Libris detected a fall but is beyond cellular range. Libris cannot contact the response team but will keep attempting to call.
Audio Msg.	"No sensors learned; sensor list empty."
Meaning	No optional sensors (i.e. Pendant Calling Devices) are currently programmed into the Smart Cradle's memory (also sounds after all sensors have been erased from the Smart Cradle's memory).
Audio Msg.	"Sensor learned and now in service."
Meaning	An optional sensor (i.e. Pendant Calling Device) has been successfully programmed into the Smart Cradle's memory.

*This is not a comprehensive list: not all audio messages are enabled by default. Your response team may elect to activate/deactivate some messages.

Disclaimer of Warranties and Limitation of Liability

Numeria Libris and all information, content, materials, products (including software) and other services included on or otherwise made available to user through Libris are provided by Numeria on an "as is" and "as available" basis, unless otherwise specified in writing. Numeria makes no representations or warranties of any kind, express or implied, as to the operation of Libris, or the information, content, materials, products (including software) or other services included on or otherwise made available to user through Libris, unless otherwise specified in writing. User expressly agrees that your use of Libris is at your sole risk to the extent permissible by applicable law. Numeria disclaims all warranties, express or implied, including, but not limited to, implied warranties of merchantability and fitness for a particular purpose. Numeria does not warrant that the Libris, information, content, materials, products (including software) or other services included on or otherwise made available to user through Libris, or electronic communications sent from Numeria, are free of viruses or other harmful components. Numeria will not be liable for any damages of any kind arising from the use of Libris, or from any information, content, materials, products (including software) or other services included on or otherwise made available to user through Libris, including, but not limited to direct, indirect, incidental, punitive, and consequential damages, unless otherwise specified in writing.

Certain state laws do not allow limitations on implied warranties or the exclusion or limitation of certain damages. If these laws apply to you, some or all of the above disclaimers, exclusions, or limitations may not apply to you, and you might have additional rights.

User understands that Numeria IS NOT AN INSURER and that (a) the amounts due under these Terms of Use are based upon the value of the services provided by Numeria, and the scope of liability as herein set forth and are unrelated to the value of the User's property, cost of medical care, loss of life or physical impairment or injuries; (b) the system utilized and relied upon by Numeria may not always operate properly for various reasons beyond Numeria's control; accordingly, Numeria makes no guarantee or warranty, including any implied warranty of merchantability or fitness that the Libris system supplied hereunder will avert or prevent occurrences or the consequences there from which they are designed to detect and/or respond to; (c) it is difficult if not impossible for Numeria to determine or control how quickly and adequately police, fire, paramedics, emergency personnel or others may respond to an alarm signal or dispatch. THEREFORE USER AGREES THAT even if Numeria should be found liable for loss, damage or injury due to a failure of service or equipment in any respect, Numeria's liability shall be limited to ten percent (10%) of the annual fees paid by User pursuant to these Terms of Use or \$500, whichever is greater, as the agreed upon damages and not as a penalty, as the exclusive remedy, and that the provisions of this paragraph shall apply if loss, damage or injury irrespective of cause or origin, results directly or indirectly to person or property from performance or nonperformance of obligations imposed by these Terms of Use or from negligence, active or otherwise, of Numeria, its agents or employees.

Indemnification

User agrees to indemnify and hold harmless Numeria, its officers, directors, shareholders, agents, employees, subsidiaries, parent and affiliate corporations, against any and all liability, claims, damages, suits, demands, expenses, and costs (including but not limited to court costs and reasonable attorneys' fees) of every kind arising out of or in consequence of Numeria's breach of these Terms of Use and/or of the negligent errors and omissions, and/or willful misconduct of Numeria, its agents, servants, and employees in the performance of, or conduct related to, these Terms of Use.

User acknowledges that Numeria is providing a device which depends on the cellular network which is out of the control of Numeria and may fail causing the User's response team not to receive a call for help including, but not limited to, the failure of the User to actually activate the device.

Warranty

Nortek Security and Control, LLC is a wholesaler and does not offer a consumer warranty for Libris; however, your dealer or reseller may offer a consumer warranty at the time of purchase.

Call your customer service number to determine warranty status and obtain further information.

You may need to furnish the IMEI number found on the back of the device and proof of purchase.

Documentation

The information in this document is subject to change without notice and does not represent a commitment on the part of Numeria. No warranty or representation, either expressed or implied, is made with respect to the quality, accuracy, or fitness for any particular purpose of this document. Numeria reserves the right to make changes to the content of this document and/or the devices associated with it at any time without obligation to notify any person or organization of such changes.

In no event will Numeria be liable for direct, indirect, special, incidental, or consequential damages arising out of the use or inability to use this device or documentation, even if advised of the possibility of such damages.

Wireless Service Carrier Disclosure

- The end user has no contractual relationship with the underlying wireless service carrier and the end user is not a third party beneficiary of any agreement between company and underlying carrier. The end user understands and agrees that the underlying carrier has no legal, equitable, or other liability of any kind to the end user. In any event, regardless of the form of the action, whether for breach of contract, warranty, negligence, strict liability in tort or otherwise, the end user's exclusive remedy for claims arising in any way in connection with this agreement, for any cause whatsoever, including but not limited to any failure or disruption of service provided hereunder, is limited to payment of damages in an amount not to exceed the amount paid by the end user for the services during the two-month period preceding the date the claim arose.
- The end user agrees to indemnify and hold harmless the underlying wireless service carrier and its officers, employees, and agents against any and all claims, including without limitation claims for libel, slander, or any property damage, personal injury or death, arising in anyway, directly or indirectly, in connection with this agreement or the use, failure to use, or inability to use libris except where the claims result from the underlying carrier's gross negligence or willful misconduct. This indemnity will survive the termination of the agreement.
- The end user has no property right in any number assigned to the device and understands that any such number can be changed from time to time.
- The end user understands that company and the underlying carrier cannot guaranty the security of wireless transmissions, and will not be liable for any lack of security relating to the use of the services.
- The service is for the end user's use only and the end user may not resell the service to any other party.
- The end user understands that the underlying carrier does not guarantee any end user uninterrupted service or coverage. The underlying carrier does not warrant that end users can or will be located using the service. The underlying carrier makes no warranty, express or implied, of merchantability or fitness for a particular purpose, suitability, or performance regarding any services or goods, and in no event shall underlying carrier be liable, whether or not due to its own negligence, for any:
 - Act or omission of a third party including, but not limited to, intentional or negligent acts of third parties that damage or impair the network or disrupt service;
 - Mistakes, omissions, interruptions, errors, failures to transmit, delays, or defects in the service provided by or through the underlying carrier;
 - Damage or injury caused by suspension or termination by the underlying carrier; or
 - Damage or injury caused by a failure or delay in connecting a call to any entity, including 911 or any other emergency service. To the full extent allowed by law, the end user releases, indemnifies and holds the underlying carrier harmless from and against any and all claims of any person or entity for damages of any nature arising in any way from or relating to, directly or indirectly, services provided by the underlying carrier or any person's use thereof, including claims arising in whole or in part from the alleged negligence of the underlying carrier.

SAR Compliance

Specific Absorption Rate (SAR) refers to the rate at which body absorbs RF energy. The device has been tested and meets applicable SAR limits for the devices used by the general public. During testing, the device is set to its highest transmission levels and placed in the positions that simulate use – next to the head with 10 mm separation, and near body with the accessories (Lanyard or Belt clip).

Carry the device at least 10 mm distance away from either your head or body to ensure compliance FCC/IC RF exposure levels. Cases with metal parts may change the RF performance including the RF exposure, in a manner that has not been tested or certified.

Specifications

Your new Numeria Libris is designed to the following specifications:

Wide Area Cellular Connectivity	2G GSM & 3G WCDMA
Location Services	On-board Global Positioning Services (GPS) and mobile network Location Based Services (LBS).
Local Area Connectivity	Bluetooth EDR 2.1
Audio	Full duplex speakerphone; providing communication up to 1 meter from device.
Automatic Fall Detection	On-board sensors for free-fall and 3-dimensional space analysis using proprietary algorithms.
Fall Detection Analysis	Fall detection identification using cloud-based proprietary algorithms and class libraries.
Battery Life	36-hour standby battery life; battery life may be reduced as a result of user activity, cellular coverage, talk time, device-specific settings, and device life.
Battery Indicator	Light indicates level of battery charge. <ul style="list-style-type: none"> ● Green: Adequately charged ● Amber: Moderately charged ● Red: Low charge
Cellular Indicator	Light indicates cellular signal strength. <ul style="list-style-type: none"> ● Green: Strong signal ● Amber: Moderate signal ● Red: No signal
Dimension	66 x 40 x 19 mm (without belt clip or lanyard clip).
Manual Alert	Mechanical touch button initiates voice call and simultaneous data transmission to call center.
Casing	Polycarbonate thermal plastic casing with IK06 rating.
Weight	49 grams
Certifications	Federal Communication Commission (FCC), Certified Mobile Operator (PTCRB)
Environment	Highly water-resistant; designed to be worn in the shower or bath. Submersible up to 1 meter for 30 minutes (IP67). Shatter-resistant from 2 meters (IK06). Functional at temperatures from -20°C to 60°C. Charging temperature range 0°C to 40°C. Conditions exceeding 40°C could slow or interrupt normal charging cycle.

Package Disposal



External Packaging: Cardboard, Recycle



Internal Packaging: Blister Pack, Polyethylene terephthalate, Recycle

Battery Guidelines

- Do not disassemble, open, crush, bend, deform, puncture or shred battery.
- Do not modify or remanufacture, attempt to insert foreign objects into the battery, immerse or expose to water or other liquids, expose to fire, explosion or other hazard.
- Only use the battery with a charging system that is supplied with the product. Use of an unqualified battery or charger may present a risk of fire, explosion, leakage, or other hazard.
- Promptly dispose of used batteries in accordance with local regulations.
- Avoid dropping the device or battery. If the device or battery is dropped, especially on a hard surface, and you suspect damage to the battery, call your customer service number for instructions.
- Improper battery use may result in a fire, explosion or other hazard.
- The device may only be charged via the charger's power port using the Libris Charger included with the product.

Symbols Used

On packaging, labeling and in parts of this user guide, you may encounter the following symbols shown here with their meaning:



Caution - there are specific warnings and precautions associated with the use of this device



Manufacturer



This equipment has been tested and found to comply with the limits for a Class B digital device, pursuant to Part 15 of the FCC Rules

NORTEK
SECURITY & CONTROL
USA & Canada (800) 421-1587 & (800) 392-0123
(760) 438-7000 - Toll Free FAX (800) 468-1340
www.nortekcontrol.com

Numeria, Numeria Libris, "Measurably Better Health" are trademarks of Nortek Security & Control LLC. All other company and product names used herein may be trademarks, or registered trademarks of the respective companies.
Copyright © 2016 Nortek Security & Control LLC