



User Manual:  
EDG0200MAN001

**Enfora® EDG0200**  
**PCMCIA EDGE Card**  
User Manual  
Version 1.0

Enfora L.P. 661 E. 18<sup>th</sup> Street Plano Texas 75074  
[www.enfora.com](http://www.enfora.com)

<b>Version:</b>	1.0
<b>Date:</b>	9/15/05
<b>Status:</b>	Draft
<b>Document Control ID:</b>	EDG0200MAN001

## Copyright Statement

Copyright 2004 by Enfora L.P. All rights reserved. No portion of this document may be copied, photocopied, reproduced, transmitted, transcribed, stored in a retrieval system or translated into any language or computer language, in any form or by any means, electronic, mechanical, magnetic, optical, chemical, manual or otherwise, without the prior written permission of Enfora L.P.

© 2005 Enfora, L.P. All rights reserved.

## Disclaimer

Enfora L.P. makes no representations or warranties, either expressed or implied, with respect to the contents hereof and specifically disclaims any warranties, merchantability or fitness for any particular purpose. Further, Enfora L.P. reserves the right to revise this publication, and to make changes from time to time in the contents hereof without obligation of Enfora L.P. to notify any person of such revision or changes.

ALL INFORMATION IS PROVIDED BY ENFORA L.P. ON AN "AS IS" BASIS ONLY. THIS COMPANY PROVIDES NO REPRESENTATIONS AND WARRANTIES, EXPRESS OR IMPLIED, INCLUDING THE IMPLIED WARRANTIES OF FITNESS FOR A PARTICULAR PORPOSE, MERCHANTABILITY AND NONINFRINGEMENT.

All product names mentioned within this document are the trademark of their respective owners.

Enfora, LP. Proprietary Information  
EDG0200MAN001

Adobe® Acrobat Reader, © 1987-1999 Adobe Systems Inc. All rights reserved.  
Adobe and Acrobat are trademarks of Adobe Systems Inc.

# Safety Information for Wireless Handheld Devices

## FCC RF EXPOSURE INFORMATION

**WARNING! Read this information before using your wireless device.**

In August 1986 the Federal Communications Commission (FCC) of the United States with its action in Report and Order FCC 96-326 adopted an updated safety standard for human exposure to radio frequency (RF) electromagnetic energy emitted by FCC regulated transmitters. Those guidelines are consistent with the safety standard previously set by both U.S. and international standards bodies. The design of this phone/device complies with the FCC guidelines and these international standards. Use only the supplied or approved antenna. Unauthorized antenna modifications, or attachments could impair call quality, damage the phone, or result in violation of FCC regulations. Do not use the phone with a damaged antenna. Please contact your local dealer for replacement antenna.

For more information about RF exposure, please visit the FCC website at [www.fcc.gov](http://www.fcc.gov)

The equipment certifications appropriate to your device are marked on the device and product specific information. The use of the equipment is subject to the following conditions:

## FCC COMPLIANCE STATEMENT

This device complies with Part 15b of the FCC Rules. Operation is subject to the following two conditions: (1) This device may not cause harmful interference, and (2) this device must accept any interference received, including interference that may cause undesired operation.

## CAUTION

Changes or modifications without the express consent of Enfora, L.P. voids the user's authority to use the equipment and will avoid any applicable warranty.

This equipment has been tested and found to comply with the limits pursuant to Part 15 Subpart B, Part 22 and Part 24 of the FCC rules. These limits are designed to provide reasonable protection against harmful interference in an appropriate installation. This equipment generates, uses, and can radiate radio frequency energy and, if not used in accordance with instructions, can cause harmful radiation to radio communication. However, there is no guarantee that interference will not occur in a particular installation. If the equipment does cause harmful interference in radio and television reception, which can be determined by turning the equipment on and off, the user is encouraged to try to correct the interference by one or more of the following measures:

- Reorient or relocate the receiving antenna
- Increase the separation distance between the equipment and the receiver
- Contact Enfora, L.P. Technical Support for assistance.

## Safety Instructions

- Use of radio equipment is prohibited in hospitals and may interfere with the use of medical equipment. Do NOT use the EDG0200 Card in hospitals.
- FCC regulations prohibit using your wireless device during any air flight. Switch OFF your PCMCIA EDGE Card prior to flight and in accordance with the airline's acceptable devices policy.
- DO NOT use the EDG0200 Card in the vicinity of explosive atmospheres. Turn your EDG0200 Card OFF in a "Blasting Area" or gas station. Obey all signs and instructions
- Local laws may prohibit the use of this device while driving in order to avoid distractions and prevent accidents. DO NOT use the EDG0200 Card while driving, in order to avoid distractions and prevent accidents. If the equipment must be used, use with only approved hands-free accessories.
- The Health Industry Manufacturers Association recommends that a minimum separation of six (6") inches be maintained between a handheld wireless device and a pacemaker to avoid potential interference with the pacemaker.

## Operating Instructions

Never violate any of the following Rules and Regulations of the FCC when using your wireless device. Such violations are punishable by fine, imprisonment, or both.

- Never use obscene, indecent, or profane language.
- Never use our EDG0200 Card to send false distress calls.
- Never wiretap or otherwise intercept a device call, unless you have first obtained the consent of the parties participating in the call.
- Never make any anonymous calls to annoy, harass or molest other people.
- Never charge another account without authorization, to avoid payment for service.
- Never willfully or maliciously interfere with any other radio communications.
- Never refuse to yield the line when informed that it is needed for an Emergency Call. Also, never take over a line by stating falsely that it is needed for an emergency.

## General Safety Instructions

- Check if all peripherals are properly connected before turning on any equipment.
- Make sure to disconnect the power plug from the power source before installing or removing peripherals.
- Always hold the product with dry hands. Droplets of water may cause it to short circuit and damage to the product.
- Use the product only under a dry environment. Humid places are not appropriate for the product.
- DO NOT use the product in a damp environment.
- DO NOT place the product on an unstable surface.
- Keep the product out of the reach of children.
- DO NOT share the same extension power line for the product with high power-consuming appliances to avoid power overload.
- NEVER attempt to disassemble the product! Doing so may cause permanent damage to the product and will void the warranty.

## TABLE OF CONTENTS

<b>COPYRIGHT STATEMENT</b> .....	<b>II</b>
<b>DISCLAIMER</b> .....	<b>II</b>
<b>SAFETY INFORMATION FOR WIRELESS HANDHELD DEVICES</b> .....	<b>III</b>
FCC RF EXPOSURE INFORMATION .....	III
FCC COMPLIANCE STATEMENT .....	III
<b>SAFETY INSTRUCTIONS</b> .....	<b>IV</b>
<b>OPERATING INSTRUCTIONS</b> .....	<b>IV</b>
<b>GENERAL SAFETY INSTRUCTIONS</b> .....	<b>V</b>
<b>OVERVIEW</b> .....	<b>1</b>
WELCOME! .....	1
PRODUCT SPECIFICATIONS .....	2
PACKAGE CONTENTS .....	3
APPEARANCE .....	4
THE NETWORK.....	5
NETWORK STATUS (LINK) LED DESCRIPTION .....	5
INSTALLING AND REMOVING THE SIM .....	5
THE ANTENNA .....	5
INSTALLING THE PCMCIA CARD INTO A LAPTOP .....	6
SYSTEM REQUIREMENTS.....	6
INSTALLING MOBILE PHONETOOLS .....	6
DIAL-UP NETWORKING.....	8
MOBILE PHONETOOLS BUTTON DEFINITIONS.....	9
MOBILE PHONETOOLS DISPLAY DEFINITIONS .....	9
MOBILE PHONETOOLS INTERNET CONNECTION WIZARD .....	10
TROUBLESHOOTING .....	13
SCOPE .....	14
HARDWARE.....	14
SOFTWARE .....	14
OTHER CONSIDERATIONS.....	15

# Overview

## **Welcome!**

Thank you for purchasing the Enfora® EDG0200 PCMCIA Card (hereafter referred to as the EDG0200 Card)!

Welcome to the world of wireless data. Your EDG0200 Card is a compact, wireless data modem that uses the EDGE (Enhanced Data Rates for GSM Evolution) or GPRS (General Packet Radio Service) wireless communication system, allowing you to transfer data on the go. Wireless IP (Internet Protocol) supports browser-based applications, giving you feature rich capability with the Internet in your hand. The EDG0200 Card supports worldwide GSM frequencies, as it operates on 850 MHz, 900 MHz, 1800 MHz, and 1900 MHz.

The EDG0200 Card is designed to work with a variety of laptop operating systems including Windows 2000 and Windows XP. With the EDG0200 Card, you can easily transform your laptop into a wireless communication device.

## Product Specifications

System Requirements		Application Interface	
Host Interface:	PCMCIA, Type II	• Host Protocols:	PPP, AT
Operating System:	PPC2003, Windows 2000, Windows XP	• Commands	
		• API Status:	AT or CMUX GSM 7.10
		• Modem Manager:	BVRP mobile PhoneTools (PC)
Quad Band Operation		SIM Card / Interface	
GSM	(850/900/1800/1900)	• 1.8/3V SIM Supported	(unlocked)
GPRS/EGPRS Packet Data		Environment	
Mode:	Class B, Multi-slot 10	Operating:	-10 °C to +55 °C
Protocol:	GPRS Release 97 and 99, SMG 31	Storage:	-40 °C to +85 °C
Coding Schemes:	CS1 – CS4 MCS1 – MCS9	Humidity:	Up to 95% non-condensing
Packet Channel:	PBCCH/PCCCH		
GSM Functionality		Status Indicator	
GSM SMS:	Text, PDU, MO/MT Cell broadcast	• Signal Level	
Certification (Pending)		Physical Characteristics	
FCC:	Parts 15, 22, & 24	Length:	85.6 mm
GCF:	Version 3.2.1	Width:	54.0 mm
PTCRB:	Version 3.17	Thickness:	5.0 mm
Industry Canada:	CSA	Housing Extension:	30.3 mm
CE Mark		(integrated antenna)	
		Part Number	
		EDG0200-00	



## Package Contents

Check the contents of the package. The following items should be included. If there is any item that is damaged or missing, please contact your dealer immediately.

Description	Quantity
The EDG0200 Card	1
BVRP Software CD	1
User Manual on CD	1
Quick Start Guide for Mobile Phone Tools on CD	1

## Appearance

The EDG0200 Card functions like any standard Type II PCMCIA Card. It operates from either 3.3 V or 5 V PCMCIA Type II slots.



## **The Network**

The EDG0200 Card transmits data on GSM/GPRS/EDGE networks.

GPRS is the technology that allows data transmission via the GSM network. Voice minutes are not used when transmitting data with GPRS. However, the wireless carrier will charge the user for data that is transmitted via the EDG0200 Card. Check with your wireless carrier for more information on their data plans.

EDGE is the next evolution of GPRS, which allows data transmission at higher speeds (up to 384 kbps).

The EDG0200 Card can transmit data using GPRS or EDGE.

## **Network Status (Link) LED Description**

The EDG0200 Card has four green LED indicators.

If all indicators are off (not illuminated), the GSM/GPRS/EDGE network has not been detected.

The numbers of LED indicators that are illuminated indicate the relative signal strength of the GSM/GPRS/EDGE network.

## **Installing and removing the SIM**

You need to use a SIM (Subscriber Identity Module) with your EDG0200 Card to allow mobile communication through GSM, GPRS or EDGE networks. A SIM can be purchased from a variety of network operators in your city, state or country. Your network operator can enable your SIM for voice calls, data sessions or both.

### **To install a SIM Card:**

Follow the decal on the back of the EDG0220 for proper SIM insertion instructions.

### **To remove the SIM Card:**

To remove the SIM from the EDG0220 Card, gently slide the SIM out of the holder.

## **The Antenna**

The EDG0200 Card has an integrated antenna located within the black plastic section of the card. Do not grab or obstruct the antenna while in use.

## **Installing the PCMCIA Card into a Laptop**

The EDG0200 Card is a standard Type II PCMCIA card that should work in most laptop computers. Follow these instructions to install the card into your laptop.

1. Find the PCMCIA slot on your laptop. Typically the slot is located on the side of your laptop.
2. Insert the EDG0200 Card into the PCMCIA slot. You should hear a tone from your laptop when the card is seated in the slot.

### **To remove from the Laptop:**

Follow your laptop and operating system instructions for the steps required to remove a PCMCIA device.

**Note:** Some operating systems may require you to stop certain services, such as the PCMCIA service, prior to physically removing the EDG0200 Card.

## **System Requirements**

Check your hardware and software to see if they satisfy the requirements below. If you are not sure, please consult your dealer or operator.

1. A valid SIM that has been data-enabled by your network operator.
2. A laptop with Windows 2000 or Windows XP and an available PCMCIA slot.

## **Installing mobile PhoneTools**

In order use the EDG0200 Card to make an EDGE connection, you will use mobile PhoneTools, which is provided on the CD that came with your EDG0200 Card.

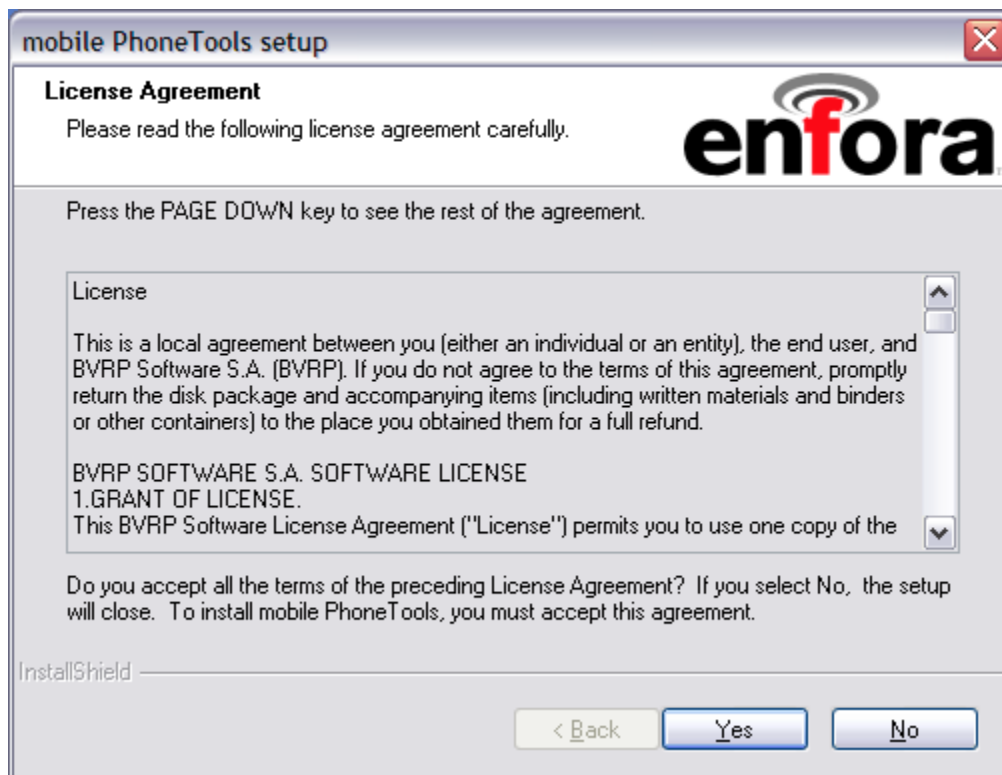
**Note:** Install the mobile PhoneTools software before inserting the EDG0200 Card into the PC slot.

The following instructions explain how to install BVRP mobile PhoneTools on your computer.

1. Place the Enfora CD into the CD drive of your computer.
2. You will see the BVRP/Enfora setup screen:



3. Click on **mobile PhoneTools Software Installation**. Click on **English mobile PhoneTools**. You will see the following screen:



4. Read the License Agreement. If you accept all the terms of the License Agreement click on **Yes**. You will see the following setup status screen:



5. Once the mobile PhoneTools is successfully installed on your computer, you will see this icon on your desktop:



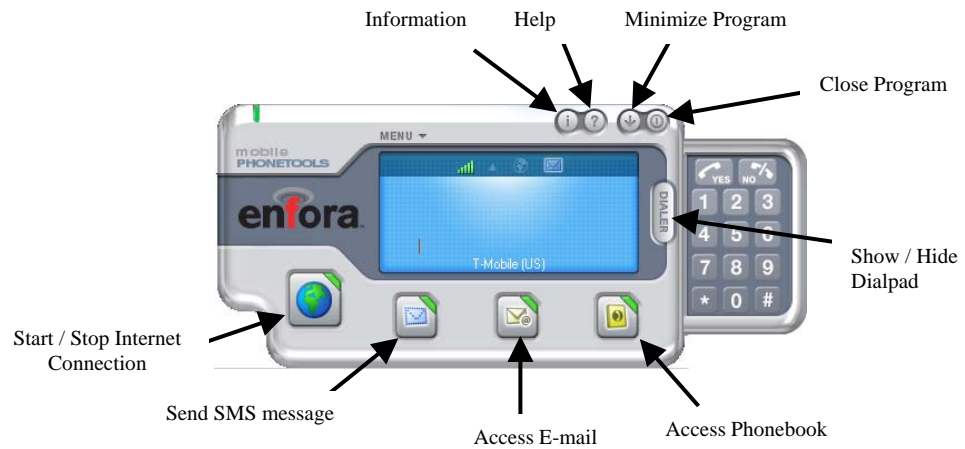
## Dial-Up Networking

It is possible to use Dial-Up Networking instead of mobile PhoneTools. If you don't want to use mobile PhoneTools, follow these instructions to install the EDG0200 Card manually:

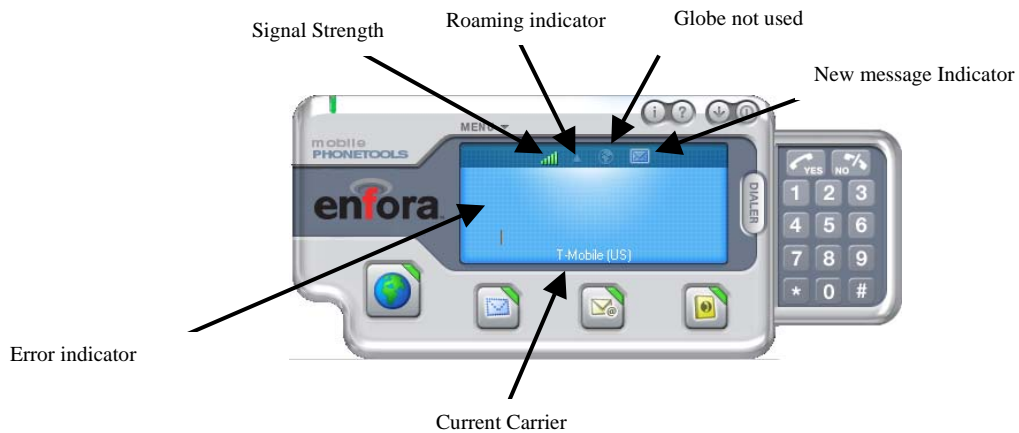
This option will only install the modem driver and INF file.

1. Insert CD into the CD-ROM.
2. Select exit if the automatic installation program launches.
3. When the new hardware wizard appears, select **Next** until **Search for a Suitable Driver Option** appears.
4. Select **Search for a Suitable Driver**.
5. Enable the CD-ROM as a search location.
6. Select the INF file for the language that is installed.
7. Continue on with the driver installation.

## mobile PhoneTools Button Definitions




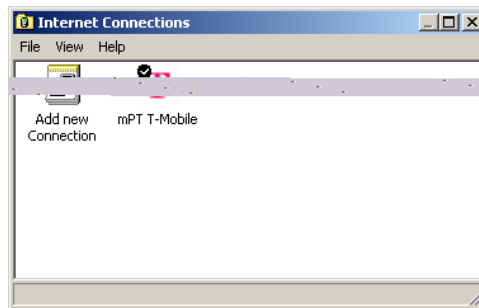
## mobile PhoneTools Display Definitions



## mobile PhoneTools Internet Connection Wizard

There are two ways to create an Internet connection:

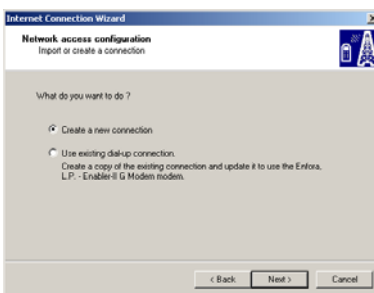
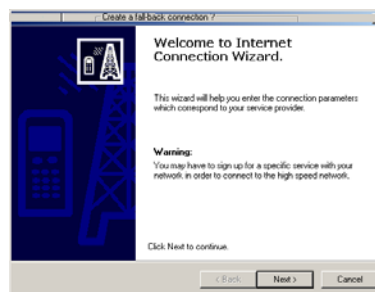
1. Select the Globe Icon  within mobile PhoneTools. The **Internet Connection Wizard** will automatically start if there are no existing Internet connections defined.
2. Use the **Menu > Setup > Internet connections** option. Then, activate **Add new Connection**.



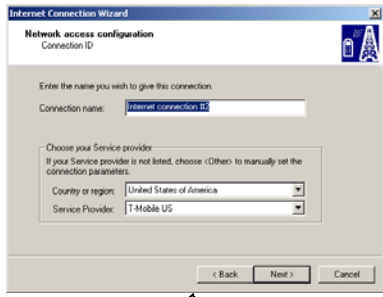
### Internet Connection Wizard Using the Globe Start Option



### Internet Connection Wizard Using the Add New Connection

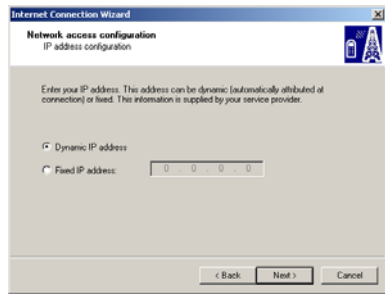
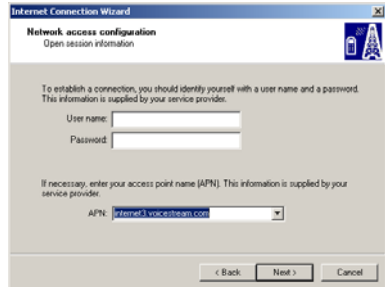
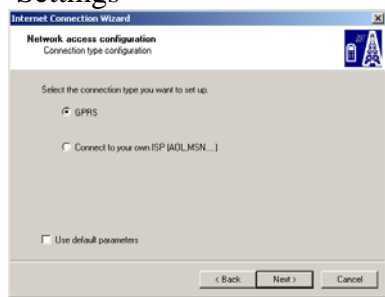
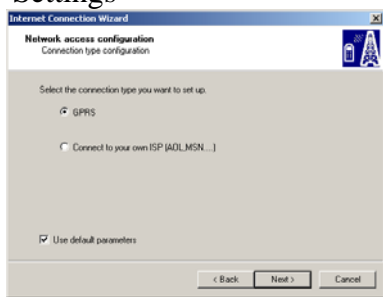
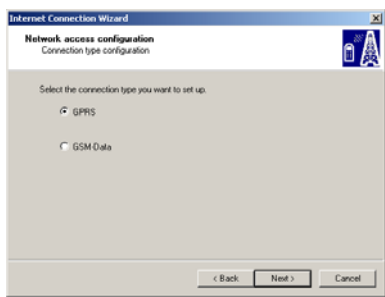


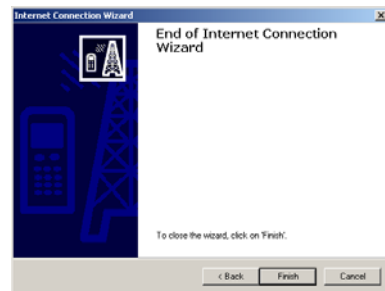
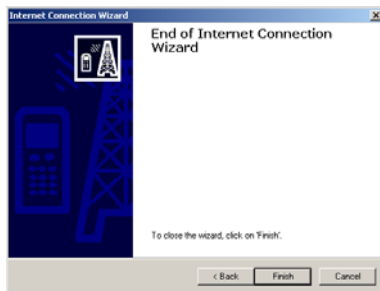
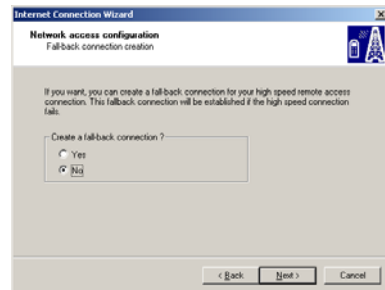
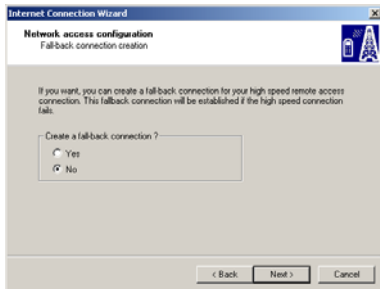
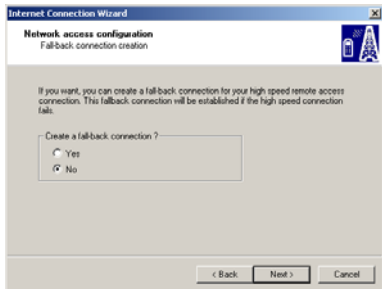
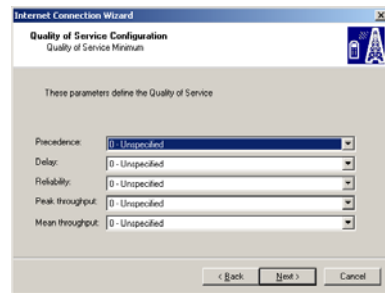
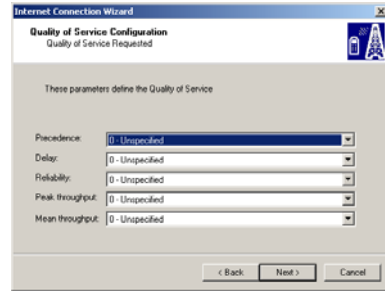
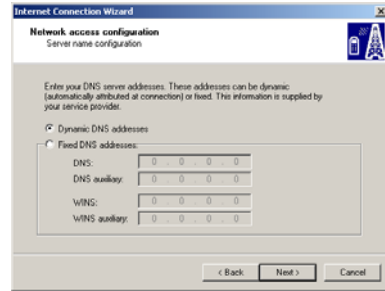
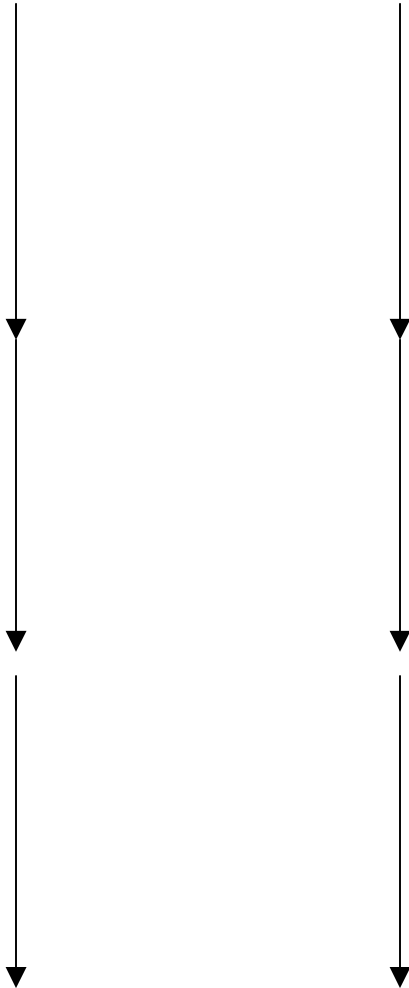




### Use Default Network Settings

### Customize Network Settings





## **Troubleshooting**

If you have any questions regarding installation, set up, or operation of the EDG0200 PCMCIA EDGE Card, please contact Enfora Technical Support.

<http://www.enfora.com>

## **LIMITED WARRANTY**

### **Scope**

Enfora warrants to the original purchaser of the product that, for a period of one (1) year from the date of product purchase, the product hardware, when used in conjunction with any associated software (including any firmware and applications) supplied by Enfora, will be free from defects in material or workmanship under normal operation. Enfora further warrants to such original purchaser that, for a period of ninety (90) days from the date of product purchase, any software associated with the product will perform substantially in accordance with the user documentation provided by Enfora, and any software media provided with the product will be free from defects in material or workmanship under normal operation. Enfora does not warrant that (a) the product hardware or any associated software will meet the purchaser's requirements, (b) that the operation of the product hardware or software will be uninterrupted or error-free, or (c) the product, when integrated in, or combined with, other products or software not supplied by Enfora, will continue to perform substantially in accordance with the user documentation. This limited warranty is only for the benefit of the original purchaser and is not transferable. No other party may act on behalf of such purchaser for the purpose of claiming or exercising any rights or benefits under or in connection with this limited warranty except as may be provided in a written agreement between Enfora and such other party.

### **Hardware**

During the warranty period applicable to the product hardware, Enfora, at its expense and in its sole discretion, will repair or replace the product if it is determined to have a covered hardware defect, provided that the purchaser first notifies Enfora of any such defect, furnishes Enfora with a proof of purchase, requests and obtains a return merchandise authorization (RMA) number from Enfora, and returns the product, shipping charges prepaid, to Enfora under that RMA. If, upon reasonable examination of the returned product, Enfora does not substantiate the defect claimed by purchaser, or determines that the defect is not covered under this limited warranty, Enfora will not be required to repair or replace the product, but may instead reship the product to the purchaser, in which case purchaser shall be responsible for paying Enfora's usual charges for unpacking, testing, and repacking the product for reshipment to purchaser. Purchaser shall bear the risk of loss or damage in transit to any product returned by purchaser to Enfora, or any returned product not found to be defective or covered under this warranty and reshipped by Enfora to purchaser. In the event Enfora repairs or replaces a defective product, the repaired or replacement product will be covered under this limited warranty for the remainder of the original warranty period on the defective product. If Enfora is unable to repair or replace a defective product, the purchaser's exclusive remedy shall be a refund of the original purchase price. Any returned and replaced product, or any product for which Enfora has refunded the original purchase price, becomes the property of Enfora.

### **Software**

During the warranty period applicable to the software or its media, Enfora, at its expense, will replace any defective software or media if purchaser gives written notification of the defect to the technical support department at Enfora during the applicable warranty period. Enfora will ship or otherwise transmit the replacement software or media to purchaser, and purchaser shall be responsible for incorporating any replacement software in the product. Enfora shall not have any obligation to provide any software bug fixes, upgrades or new releases except as may be necessary to correct any covered defect of which purchaser notifies Enfora in writing during the applicable warranty period. Enfora,

from time to time and in its sole discretion, may make available for download on its website ([www.enfora.com](http://www.enfora.com)) certain software bug fixes, upgrades or new releases for the product. The purchaser should periodically visit such website to determine whether any such bug fixes, upgrades or new releases have become available. Download and use of any such bug fixes, upgrades or new releases is subject to all of the applicable terms and conditions of Enfora's technical support policy as posted and updated on its website.

### Exceptions and Disclaimers

Enfora shall have no obligation under this limited warranty for (a) normal wear and tear, (b) the cost of procurement of substitute products or (c) any defect that is (i) discovered by purchaser during the warranty period but purchaser does not notify or request an RMA number from Enfora, as required above, until after the end of the warranty period, (ii) caused by any accident, misuse, abuse, improper installation, handling or testing, or unauthorized repair or modification of the product, (iii) caused by use of any software other than any software supplied by Enfora, or by use of the product other than in accordance with its documentation or (iv) the result of electrostatic discharge, electrical surge, fire, flood or similar causes. Unless otherwise provided in a written agreement between the purchaser and Enfora, the purchaser shall be solely responsible for the proper configuration, testing and verification of the product prior to deployment in the field.

ENFORA'S SOLE RESPONSIBILITY AND PURCHASER'S SOLE REMEDY UNDER THIS LIMITED WARRANTY SHALL BE TO REPAIR OR REPLACE THE PRODUCT HARDWARE, SOFTWARE OR SOFTWARE MEDIA (OR IF REPAIR OR REPLACEMENT IS NOT POSSIBLE, OBTAIN A REFUND OF THE PURCHASE PRICE) AS PROVIDED ABOVE. ENFORA EXPRESSLY DISCLAIMS ALL OTHER WARRANTIES OF ANY KIND, EXPRESS OR IMPLIED, INCLUDING WITHOUT LIMITATION ANY IMPLIED WARRANTIES OF NON-INFRINGEMENT, MERCHANTABILITY, SATISFACTORY PERFORMANCE AND FITNESS FOR A PARTICULAR PURPOSE. IN NO EVENT SHALL ENFORA BE LIABLE FOR ANY INDIRECT, SPECIAL, EXEMPLARY, INCIDENTAL OR CONSEQUENTIAL DAMAGES (INCLUDING WITHOUT LIMITATION LOSS OR INTERRUPTION OF USE, DATA, REVENUES OR PROFITS) RESULTING FROM A BREACH OF THIS WARRANTY OR BASED ON ANY OTHER LEGAL THEORY, EVEN IF ENFORA HAS BEEN ADVISED OF THE POSSIBILITY OR LIKELIHOOD OF SUCH DAMAGES.

### **Other Considerations**

Some jurisdictions may require a longer warranty period than specified above and, accordingly, for products sold in those jurisdictions the applicable warranty period shall be extended as required under the laws of those jurisdictions. Furthermore, some jurisdictions may not allow the disclaimer of implied warranties or the exclusion or limitation of incidental or consequential damages, so the above disclaimer, limitation or exclusion may not apply to products sold in those jurisdictions. This limited warranty gives the purchaser specific legal rights and the purchaser may have other legal rights that vary from jurisdiction to jurisdiction.

In some instances, certain aspects of the product warranty may also be covered in a separate written agreement between Enfora and the distributor or reseller, if any, from whom purchaser purchased the product. That agreement may provide, for example, a different product return procedure that may also be available to purchaser (e.g., the product may be returned to Enfora through that distributor or reseller).

### Governing Law

This limited warranty shall be governed by the laws of the State of Texas, United States of America, without regard to conflict of laws principles. This limited warranty shall not be governed in any respect by the United Nations Convention on Contracts for the International Sale of Goods.