



**Ricochet GT Wireless Modem  
Model NRM-R900**



## **Merlin for Ricochet Wireless Modem Model NRM-R900**

### **Safety and Regulatory Notices**

#### **SAFETY WARNING**

This product is not to be used in any environment where radio frequency equipment is prohibited or restricted in its use. This includes aircraft/airports, hospitals, and other sensitive electronic areas. To ensure that your modem is deactivated you should remove it from your computer under the above conditions.

#### **SAFETY WARNING**

Under extended operation the Merlin for Ricochet modem will generate a noticeable amount of heat. Like all PC Cards, the modem generates heat during normal operations and is also heated by the host computer. For this reason it is recommended that you allow the modem to cool down after extensive operation so that it is cool to the touch when you remove it from your computer.

#### **REGULATORY NOTICES**

##### **Federal Communications Commission Radio Frequency Interference Statement**

This equipment has been certified to comply within the limits of a class B digital device pursuant to part 15 of the FCC Rules. These limits are designed to provide reasonable protection against harmful interference in residential situations. This equipment generates, uses, and can radiate radio frequency energy, and, if not properly installed and used in accordance with the instructions, may cause harmful interference to radio or television reception, which can be determined by turning the equipment on and off. You are encouraged to try to correct the interference by one or more of the following measures:

- Reorient or relocate the receiving antenna of the television, radio or cordless telephone.
- Increase the separation between the equipment and the receiver.
- Connect the equipment to an outlet on a circuit different from that to which the receiver is connected.
- Consult the dealer or an experienced radio/television technician for additional suggestions.

#### **ICES-003 Statement**

This Class B digital apparatus meets all requirements of the Canadian Interference Causing Equipment Regulations.

#### **Caution:**

**This device is required to comply with FCC RF exposure requirements for mobile transmitting devices. A separation distance of 20 cm (8 inches) or more must be maintained between the antenna and all persons during device operations to satisfy RF exposure compliance.**

***FCC ID: NBZ-NRM R900***

# Merlin for Ricochet *Modem Manager* Application

## Welcome

This help file contains information on the Merlin for Ricochet *Modem Manager* application. Please take a moment to read through this Help file to acquaint yourself with the *Modem Manager* application's features.

## Features of the Merlin for Ricochet *Modem Manager* Application

The Merlin for Ricochet *Modem Manager* application provides you with a graphical view of your Merlin modem's connection status with the Ricochet network. *Modem Manager* gives information on the following:

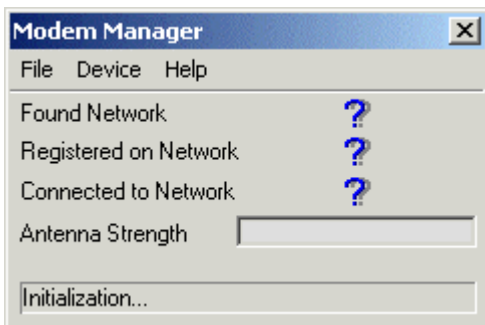
- • **Found Network**—tells if the modem was unable to find a network connection or if at least one network connection was found.
- • **Registered on Network**—tells if the modem actually registered to the network.
- • **Connected to Network**—indicates if a data session is active.
- • **Antenna Strength**—indicates relative antenna signal strength with an active, multi-colored bar graph.

*Status* application can also be used to obtain additional information about the Metricom modem. See [About Status Application](#) for additional information.

## Starting *Modem Manager*

Once the Merlin PCMCIA card and the *Setup* program with *Modem Manager* have been installed, the *Modem Manager* window will launch.

A blue Question mark indicates that the modem is attempting to complete the related task. In the following example, the modem is querying the system for information. The Status bar at the bottom of the window indicates that modem initialization is taking place.

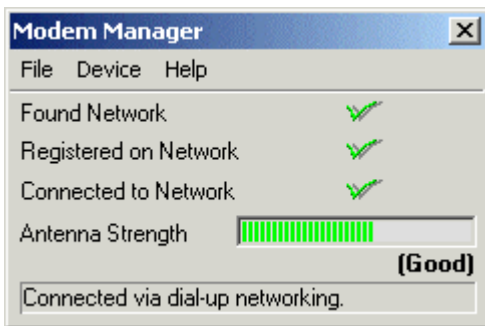


A red X indicates that the related task could not be completed. In the following example, the modem has not been able to find, register, or connect to the network. The Status bar at the bottom of the window indicates that the modem is attempting to find a network.



A green Checkmark indicates that the related task has been completed. In the following example, the modem has found, registered and connected to the network.

The active Antenna Strength bar graph indicates that the antenna signal strength is good. The Status bar at the bottom of the window indicates that the modem is now connected to the network via dial-up networking.



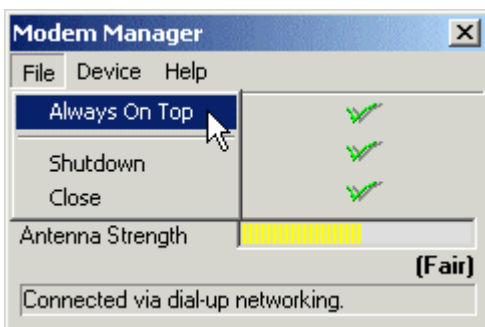
## ***Modem Manager Windows***

Use the **File**, **Device** and **Help** menus from the **Modem Manager** window to control the operation of the modem and to obtain additional modem information.

### **File**

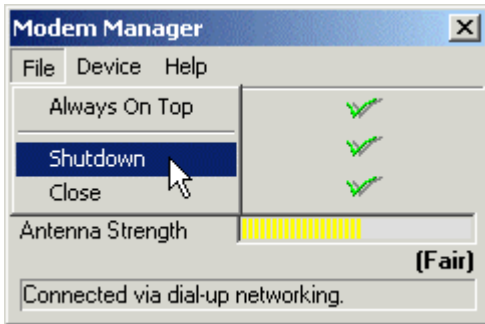
#### **Always On Top**

To make the **Modem Manager** window always visible, click **File**, and then select **Always On Top**.



### Shutdown

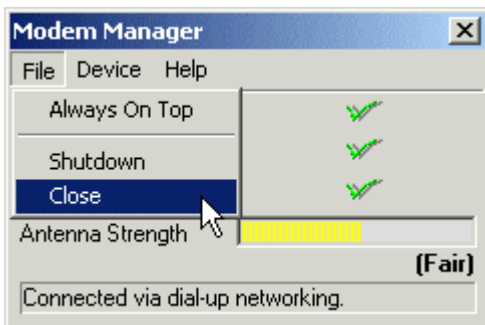
To disconnect the service, click **File**, and then select **Shutdown**.



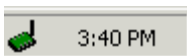
The *Modem Manager* application will disconnect and the *Modem Manager* window will close.

### Close

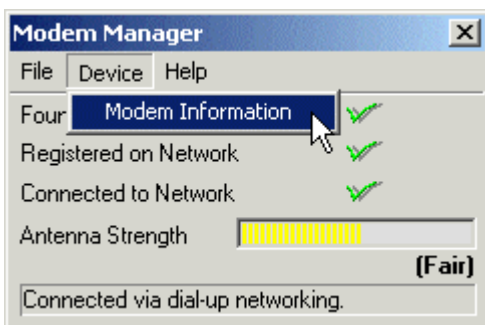
To close the *Modem Manager* window without disconnecting the application, click **File**, and then select **Close**.



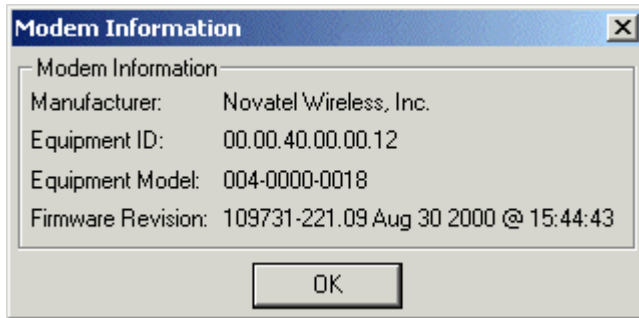
The window will then minimize to the tray icon.



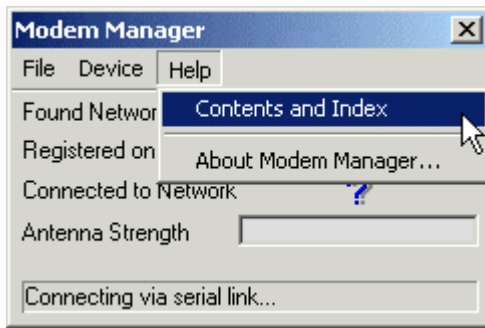
To obtain information about the modem, click **Device** and select **Modem Information**.



The **Modem Information** window will be displayed.

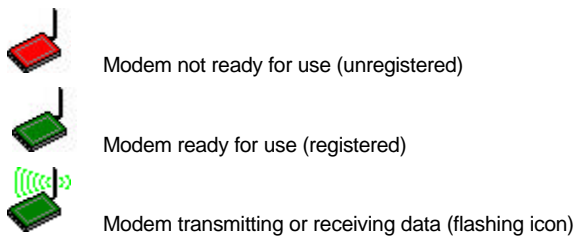


To see the **Modem Manager** application Help Table of Contents and Index, click **Contents and Index**.



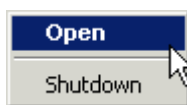
## Tray Icons

When the Merlin for Ricochet Modem Manager has been loaded, one of the following icons will show in the system icon tray.



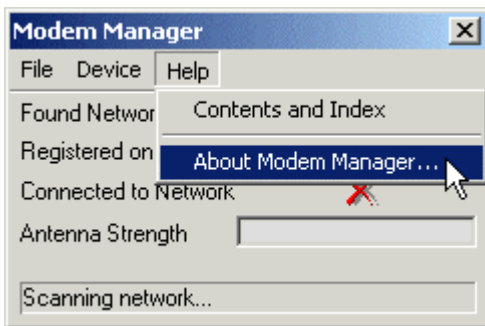
Right click on these tray icons to open the application window or to completely shut down the application.

1. To open the **Modem Manager** window, click **Open**.
2. To shut down the application, click **Shutdown**.



## About the *Modem Manager* Application

To obtain additional information about the Merlin for Ricochet *Modem Manager* application, click the **Help** menu, and then select **About Modem Manager...**



The **About Merlin Ricochet Status Information** window will open, indicating the version number of the *Modem Manager* application software.

