



**Enfora Wi-Fi Adapter for
Treo 600/650 Smartphone**

Users Manual

**Enfora L.P. 661 E. 18th Street Plano Texas 75074
www.enfora.com**

Copyright Statement

Copyright 2004 by Enfora L.P. All rights reserved. No portion of this document may be copied, photocopied, reproduced, transmitted, transcribed, stored in a retrieval system or translated into any language or computer language, in any form or by any means, electronic, mechanical, magnetic, optical, chemical, manual or otherwise, without the prior written permission of Enfora L.P.

© 2004 Enfora, L.P. All rights reserved.

Disclaimer

Enfora L.P. makes no representations or warranties, either expressed or implied, with respect to the contents hereof and specifically disclaims any warranties, merchantability or fitness for any particular purpose. Further, Enfora L.P. reserves the right to revise this publication, and to make changes from time to time in the contents hereof without obligation of Enfora L.P. to notify any person of such revision or changes.

ALL INFORMATION IS PROVIDED BY ENFORA L.P. ON AN “AS IS” BASIS ONLY. THIS COMPANY PROVIDES NO REPRESENTATIONS AND WARRANTIES, EXPRESS OR IMPLIED, INCLUDING THE IMPLIED WARRANTIES OF FITNESS FOR A PARTICULAR PORPOSE, MERCHANTABILITY AND NONINFRINGEMENT.

All product names mentioned within this document are the trademark of their respective owners.

Enfora, LP. Proprietary Information
WLN1501MAN001

Adobe® Acrobat Reader, © 1987-1999 Adobe Systems Inc. All rights reserved.
Adobe and Acrobat are trademarks of Adobe Systems Inc.

Safety Information for Wireless Handheld Devices

The equipment certifications appropriate to your device are marked on the device and product specific information. The use of the equipment is subject to the following conditions:

FCC COMPLIANCE STATEMENT

This device complies with the limits for a Class B digital device, pursuant to Part 15 of the FCC Rules. Operation is subject to the following two conditions: (1) This device may not cause harmful interference, and (2) this device must accept any interference received, including interference that may cause undesired operation.

CAUTION

Changes or modifications without the express consent of Enfora, Inc. void the user's authority to use the equipment.

This equipment has been tested and found to comply with the limits for a Class B digital device, pursuant to Part 15 of the FCC Rules. These limits are designed to provide reasonable protection against harmful interference in an appropriate installation. This equipment generates, uses, and can radiate radio frequency energy and, if not used in accordance with instructions, can cause harmful radiation to radio communication. However, there is no guarantee that interference will not occur in a particular installation. If the equipment does cause harmful interference in radio and television reception, which can be determined by turning the equipment on and off, the user is encouraged to try to correct the interference by one or more of the following measures:

- Reorient or relocate the receiving antenna.
- Increase the separation distance between the equipment and the receiver.
- Connect the equipment into an outlet on a circuit different from that to which the receiver is connected.
- Contact Enfora, Inc. Technical Support for assistance.

FCC Radiation Exposure Statement

1. **CAUTION:** This equipment complies with FCC RF radiation exposure limits set forth for an uncontrolled environment.
2. This Transmitter must not be co-located or operating in conjunction with any other antenna or transmitter.

The Federal Communications Commission (FCC) with its action in ET Docket 96-8 has adopted a safety standard for human exposure to radio frequency (RF) electromagnetic energy emitted by FCC certified equipment. Enfora products meet the uncontrolled environmental limits found in OET-65 and ANSI C95.1, 1991. Proper operation of this radio according to the instructions found in this manual and the hardware and software guides on the CD will result in user exposure that is substantially below the FCC recommended limits.

Customers in European countries

Battery is not replaceable, for service center only.

CAUTION

**RISK OF EXPLOSION IF BATTERY IS REPLACED BY INCORRECT TYPE.
DISPOSE OF BATTERIES ACCORDING TO THE INSTRUCTIONS.**

Use the following or equivalent certified Power Supply.
Make: PHIHONG, Model PSA11R-050
Rated Input: 100-240Vac, 0.5A, 50-60hz,
DC Output: 5V DC, 2.0A
Limited Power Source.

General Safety Instructions

- Check if all peripherals are properly connected before turning on any equipment.
- Make sure to disconnect the power plug from the power source before installing or removing peripherals.
- Always hold the product with dry hands. Droplets of water may cause it to short circuit and damage to the product.
- Use the product only under a dry environment. Humid places are not appropriate for the product.
- DO NOT use the product in a damp environment.
- DO NOT place the product on an unstable surface. Keep the product out of the reach of children.
- DO NOT share the same extension power line for the product with high power-consuming appliances to avoid power overload.
- NEVER attempt to disassemble the product! Doing so may cause permanent damage to the product and will void the warranty.

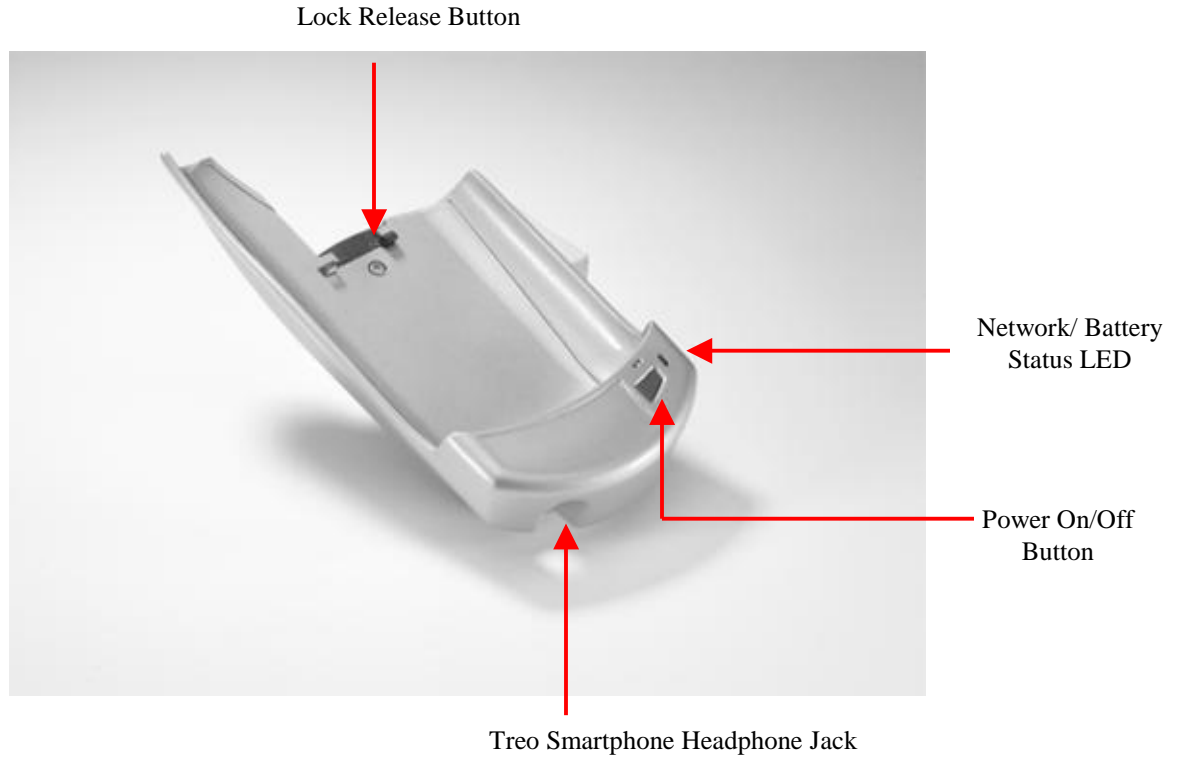
Package Contents

Check the contents of the package. The following items should be included. If there is any item that is damaged or missing, please contact your dealer immediately.

Description	Quantity
Enfora Wi-Fi Adapter for Treo Smartphone	1
Install CD-ROM	1
Battery Cover Door for the Treo 650	1

Appearance

Enfora Wi-Fi Adapter for Treo Smartphone



WLN150x Wi-Fi Adapter

Network & Battery Status LED Description

LED Color	LED Status	Connection Status
OFF	OFF	Unit Not Powered ON
Green	Short Blink	Attempting to Register on Wi-Fi Network
Green	Solid	Register on Wi-Fi Network
Green	Long Blink	Passing Data on Wi-Fi network
Yellow	Short Blink	Battery Low (Charge Battery)
Yellow	Solid	Device Powered on. Not Registered

Installing the Treo Smartphone

To install a Smartphone:

1. Slide your Treo 600/650 Smartphone into the Enfora Wi-Fi Adapter. Push your Treo 600/650 Smartphone onto the connector at the bottom of the Enfora Wi-Fi Adapter.
2. Lock your Treo Smartphone in to the Enfora Wi-Fi Adapter with the Release Button on the back of the Adapter.



To remove the Smartphone:

1. Press down on the Release Button to unlock the Treo Smartphone from the Adapter.
2. Slide the Treo 600/650 Smartphone out of the Adapter.

Battery Operations

Prior to using the Enfora Wi-Fi Adapter, charge the new battery for a minimum of 2 hours to obtain a full charge. The Enfora Wi-Fi Adapter derives its power from a self-contained battery pack to ensure there is no battery drain on the handheld device.

The Enfora Wi-Fi Adapter will also charge your Treo 600/650 Smartphone if the Treo 600/650 is placed in the Enfora Wi-Fi Adapter. The Enfora Wi-Fi Adapter WILL NOT act as a spare battery for the Treo Smartphone.

System Requirements

Check your hardware and software to see if they satisfy the requirements below. If you are not sure, please consult your dealer or operator.

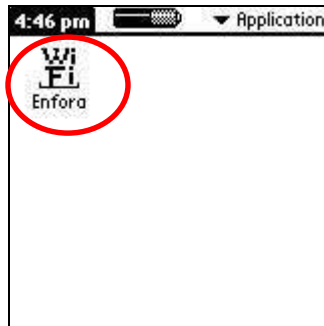
- Treo 600
OR
- Treo 650

Software Installation

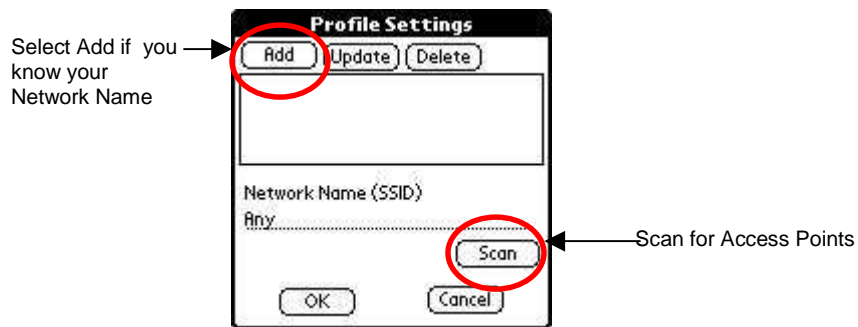
1. If enclosed CD-ROM does not auto start, run the Enfora program *EnforaWiFiUSB223.exe* and follow the install wizard. The Enfora program is located on the CD-ROM in the install directory.
2. After completing the installation you will be prompted to perform a Hot Sync®. Dock your Palm™ device and then perform Hot Sync®.

Configuring your Enfora WLN150x

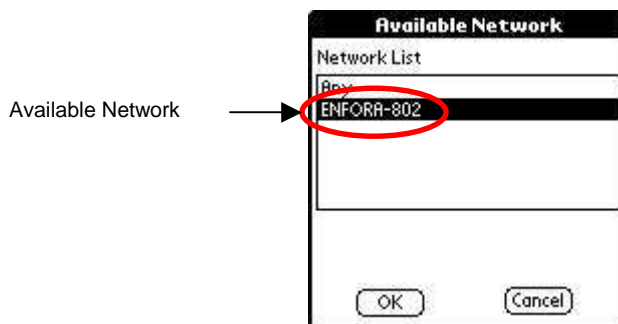
1. **First power on the Enfora Wi-Fi Adapter . The power button is located on the right-hand side of the Enfora Wi-Fi Adapter. Next select the Enfora Wi-Fi icon from applications on your Palm™ handheld.**



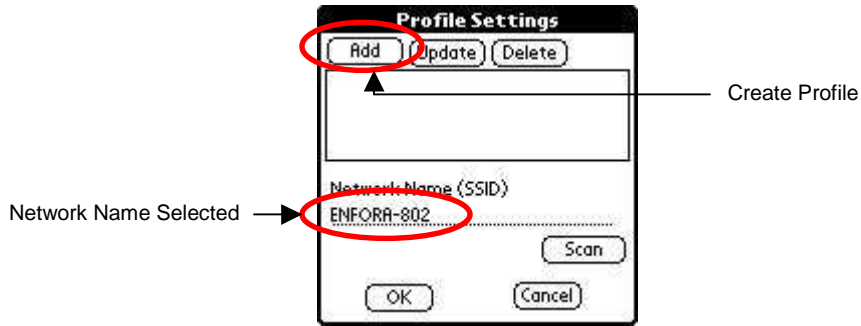
2. The first time you use the Enfora Wi-Fi Adapter you will need to configure the Wi-Fi Adapter. If you know your Network Name (SSID) select Add and then go to step 6. If you do not know the Network Name (SSID) select Scan to search for any available Access Points.



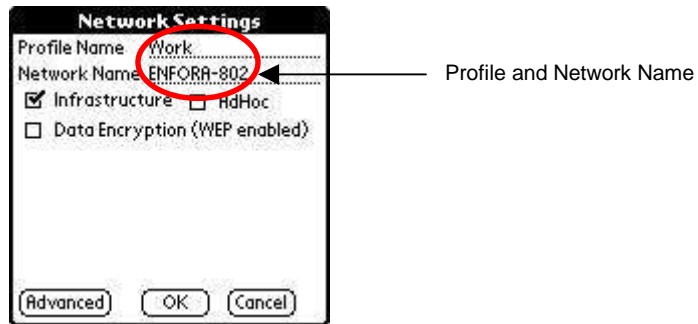
3. If there are any available Access Points in range of the Enfora Wi-Fi Adapter , the Network Name will be displayed in the Network List window. If your Network Name is displayed in the list select it and then select OK. Some wireless networks do not broadcast the Network Name. Please contact your network administrator if you are unsure of your Network Settings.



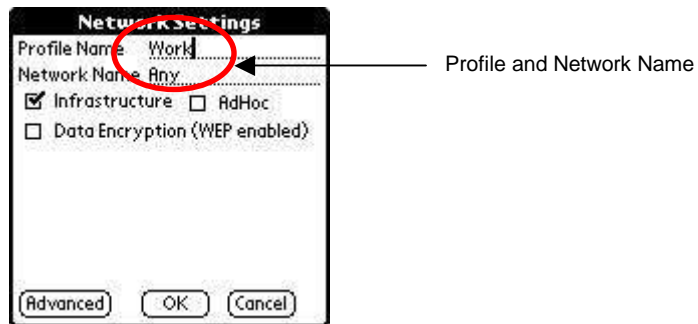
4. The Network Name you selected will now appear in the Profile Settings window under Network Name (SSID). To create a Profile for this Network Name select add from the menu. The maximum number of profiles you can create is four.



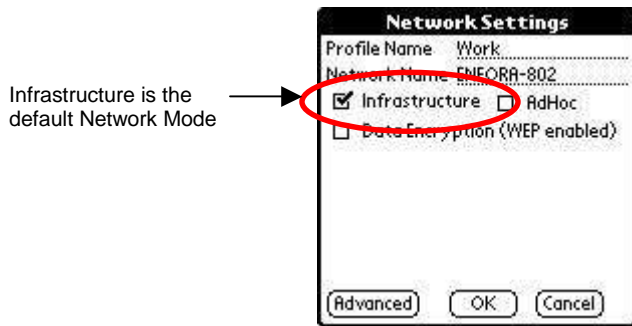
5. Create a unique name for this profile. The profile name should be different than the Network Name. The Network Name that you selected from the Scan list will appear in the Network Name field. Next skip to step 7.



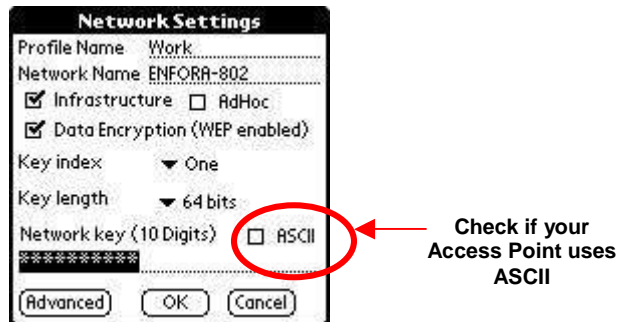
6. If you know your Network Name first create a name for your profile. The profile name should be different than the Network Name. Any is the default Network Name. Highlight Any and enter your Network Name. The Network Name is case sensitive and must match your Access Point. If your network does not require a Network Name you can leave Any as the Network Name.



7. By default the Network Mode is Infrastructure. Also by default Data Encryption is disabled. To enable encryption select Data Encryption (WEP enabled). Wired Equivalent Privacy (WEP) is a security protocol used to provide security for a wireless network.



- If WEP is enabled on your network please contact your network administrator for the correct WEP settings. Hex is the default setting for the network key. If your Access Point uses ASCII select the box in front of ASCII. Select OK to save your settings.



- Select OK from the Profile Settings window to return to the main Manager window.



- In the Manager window check the status of the Enfora Wi-Fi Adapter . When the status displays Associated you can click on Connect to enable a Wireless connection.

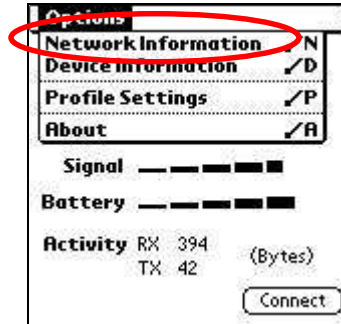


11. Once the Enfora Wi-Fi Adapter is configured you do not need to use the Manager to make a wireless connection. Simply select your web browser and the wireless connection will be started. Remember to power on the Enfora Wi-Fi Adapter before selecting your web browser.

ADDITIONAL INFORMATION

Network Information

To find out your Network Settings click on the preference button. Then select Network Information.



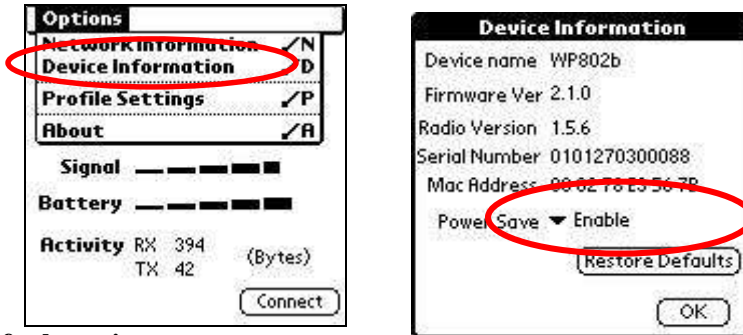
1. The Network Information available is listed below:



ADVANCED CONFIGURATION

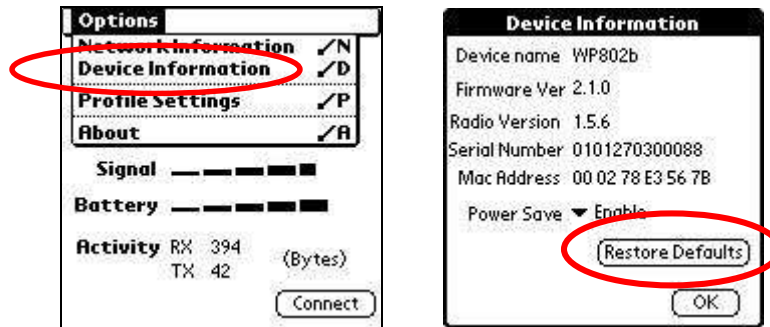
Power Save

The Enfora Wi-Fi Adapter has a Power Save setting. By default the Power Save option is Enabled. To Disable Power Save open the Enfora Wi-Fi Adapter Manager and select Device Information from the options menu. From the Device Information window select the drop down box to Enable or Disable the Power Save option.



Restore Default settings

The Enfora Wi-Fi Adapter can be set back to the factory defaults. Any saved Profiles will be erased. To restore the factory defaults open the Enfora Wi-Fi Adapter Manager and select Device Information from the options menu. From the Device Information window select Restore Defaults.



SOFTWARE LICENSE AGREEMENT

CAREFULLY READ THE FOLLOWING TERMS AND CONDITIONS BEFORE USING THIS PRODUCT. IT CONTAINS SOFTWARE, THE USE OF WHICH IS LICENSED BY ENFORA, INC. ("ENFORA") TO YOU, THE ORIGINAL END USER, FOR YOUR USE ONLY AS SET FORTH BELOW. IF YOU DO NOT AGREE TO THE TERMS AND

CONDITIONS OF THIS AGREEMENT, DO NOT USE THE SOFTWARE. USING ANY PART OF THE SOFTWARE INDICATES THAT YOU ACCEPT THESE TERMS.

Software products included with this product that are not Enfora products are licensed to you by the software provider. Refer to the license contained in the provider's product for the terms of use before using such products.

LICENSE: Enfora grants you a limited, nonexclusive license to use the accompanying software program(s) (the "Software") subject to the terms and restrictions set forth in this License Agreement. You are not permitted to use the Software in any manner not expressly authorized by this License. You acknowledge and agree that ownership of the Software and all subsequent copies thereof regardless of the form or media are held by Enfora or its suppliers.

The Software is licensed for use on any Palm product and/or personal computer, provided that the Software is used only in connection with Enfora products. You may reproduce and use one (1) copy of the Desktop Software for each personal computer or Palm product on which such Software is used. You may use the Device Software only on one (1) Palm product. Otherwise, the Software and supporting documentation may be copied only as essential for backup or archive purposes in support of your use of the Software. You must reproduce and include all copyright notices and any other proprietary rights notices appearing on the Software on any copies that you make.

NO ASSIGNMENT; NO REVERSE ENGINEERING: You may transfer the Software to another party if such party accepts the terms and conditions of this License Agreement. If you transfer the Software, you must at the same time either transfer all copies of the Software as well as the supporting documentation to the same party or destroy any such materials not transferred.

Modification, reverse engineering, reverse compiling, or disassembly, of the Software is expressly prohibited. However, if you are a European Union ("EU") resident, information necessary to achieve interoperability of the Software with other programs within the meaning of the EU Directive on the Legal Protection of Computer Programs is available to you from Enfora upon written request.

EXPORT RESTRICTIONS: You agree that you will not export or re-export the Software or accompanying documentation (or any copies thereof) or any products utilizing the Software or such documentation in violation of any applicable laws or regulations of the United States or the country in which you obtained them.

TERM AND TERMINATION: This License Agreement is effective until terminated. You may terminate it at any time by destroying the Software and documentation together with all copies and merged portions in any form. It will also terminate immediately if you fail to comply with any term or condition of this License Agreement. Upon such termination you agree to destroy the Software and documentation, together with all copies.

GOVERNING LAW: This License Agreement shall be governed by the laws of the State of Texas and by the laws of the United States, excluding their conflicts of laws principles. The United Nations Convention on Contracts for the International Sale of Goods (1980) is hereby excluded in its entirety from application to this License Agreement.

SEVERABILITY: In the event any provision of this License Agreement is found to be invalid, illegal or unenforceable, the validity, legality and enforceability of any of the remaining provisions shall not in any way be affected or impaired.

ENTIRE AGREEMENT: This License Agreement and the accompanying Limited Warranty set forth the entire agreement between you and Enfora, supersedes all prior agreements, whether written or oral, with respect to the Software, and may be amended only in a writing signed by both parties.

Enfora, Inc.
661 E. 18th St.
Plano, TX 75074
United States of America
www.enfora.com
June 13, 2003

Warranty Info