

Enfora

Wireless Portfolio

Beta Version

User Manual

This manual is copyrighted. All rights reserved. No portion of this document may be copied, photocopied, reproduced, translated, or reduced to any electronic medium or machine form without prior consent in writing from Enfora, Inc.

© 2003 Enfora, Inc. All rights reserved.

The information in this document is subject to change without notice and does not represent a commitment on the part of Enfora, Inc.

Adobe® Acrobat Reader, © 1987-1999 Adobe Systems Inc. All rights reserved. Adobe and Acrobat are trademarks of Adobe Systems Inc.

Enfora, Inc.
661 East 18th Street
Plano, TX 75074
USA

www.enfora.com

Enfora, Inc. Proprietary Information
WP802b001MAN

The products and specifications, configurations, and other technical information regarding the services described or referred in this guide are subject to change without notice. All statements, technical information, and recommendations contained in this guide are believed to be accurate and reliable, but are presented “as is”, without warranty of any kind, expressed or implied. Users must take full responsibility for their application of any products specified in this document. Enfora, Inc. makes no implied warranties of merchantability or fitness for a purpose as a result of this guide or the information described within, all other warranties, express or implied, are excluded.

Contents

Regulatory Information	4
Device Compatibility	5
Getting Started	5
Software Installation	5
Placing the Palm® handheld into the Wireless Portfolio	5
Configuring the Enfora WP802b	5
Entering the Network ID	7
Setting Encryption	8
Selecting the Key Index	9
Selecting the Key Length	10
Saving Settings	11
Connecting	12
Wireless Portfolio LED's	12
Battery Charging	12
Device Compatibility List	13

Regulatory Information

The equipment certifications appropriate to your device are marked on the device and product specific information. The use of the equipment is subject to the following conditions:

FCC COMPLIANCE STATEMENT

This device complies with the limits for a Class B digital device, pursuant to Part 15 of the FCC Rules. Operation is subject to the following two conditions: (1) This device may not cause harmful interference, and (2) this device must accept any interference received, including interference that may cause undesired operation.

CAUTION

Changes or modifications without the express consent of Enfora, Inc. void the user's authority to use the equipment.

This equipment has been tested and found to comply with the limits for a Class B digital device, pursuant to Part 15 of the FCC Rules. These limits are designed to provide reasonable protection against harmful interference in an appropriate installation. This equipment generates, uses, and can radiate radio frequency energy and, if not used in accordance with instructions, can cause harmful radiation to radio communication. However, there is no guarantee that interference will not occur in a particular installation. If the equipment does cause harmful interference in radio and television reception, which can be determined by turning the equipment on and off, the user is encouraged to try to correct the interference by one or more of the following measures:

Reorient or relocate the receiving antenna.

Increase the separation distance between the equipment and the receiver.

Connect the equipment into an outlet on a circuit different from that to which the receiver is connected.

Contact Enfora, Inc. Technical Support for assistance.

FCC Radiation Exposure Statement

1. CAUTION: This equipment complies with FCC RF radiation exposure limits set forth for an uncontrolled environment.
2. This Transmitter must not be co-located or operating in conjunction with any other antenna or transmitter.

The Federal Communications Commission (FCC) with its action in ET Docket 96-8 has adopted a safety standard for human exposure to radio frequency (RF) electromagnetic energy emitted by FCC certified equipment. Enfora products meet the uncontrolled environmental limits found in OET -65 and ANSI C95.1, 1991. Proper operation of this radio according to the instructions found in this manual and the hardware and software guides on the CD will result in user exposure that is substantially below the FCC recommended limits.

Getting Started

This section explains how to setup the Enfora WP802b for use with a Palm® handheld device with OS 3.51 – 5.2.1.

Software Installation

1. Run the Enfora program **802Mgr.exe** and follow the install wizard. The Enfora program is located on the 802.11b beta version CD.
2. After completing the installation you will be prompted to perform a Hotsync.
3. Dock you Palm® device and then perform a HotSync.

Placing the Palm® handheld into the Wireless Portfolio

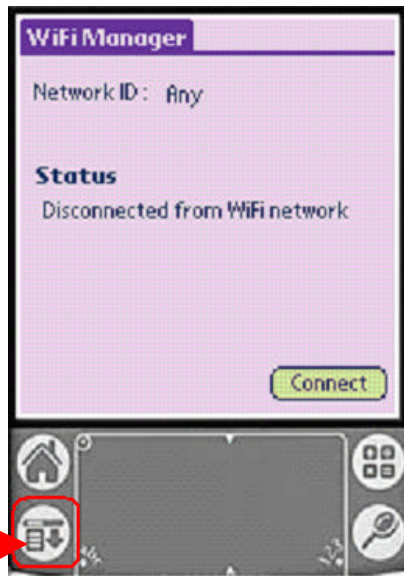
- Adhere the provided female Velcro strip to the back of your Palm® handheld and the male Velcro strip on the inner right side of the Wireless Portfolio.
- Attach the Palm® Universal Adaptor on the Wireless portfolio to your Palm® handheld.
- Place your Palm® handheld on the inner right side of the Wireless Portfolio.

Configuring Enfora 802.11b Wireless Portfolio

1. First power on the Wireless Portfolio. The power button is located on the left-hand side of the Wireless Portfolio just above the 2 LED's. It is placed on the inner edge of the Wireless Portfolio. Next select the Wi-Fi icon from the home screen of your Palm® handheld.



2. The Wi-Fi Manager screen will appear. Select the preference icon on your Palm® handheld.



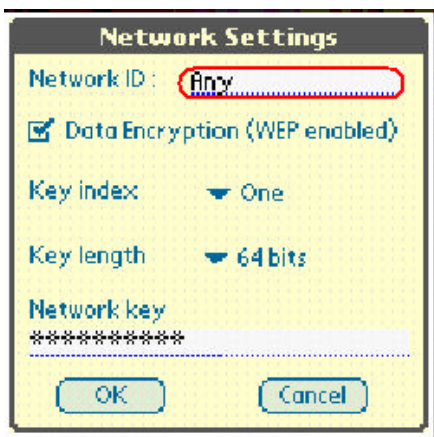
3. Select Network from the Options menu.



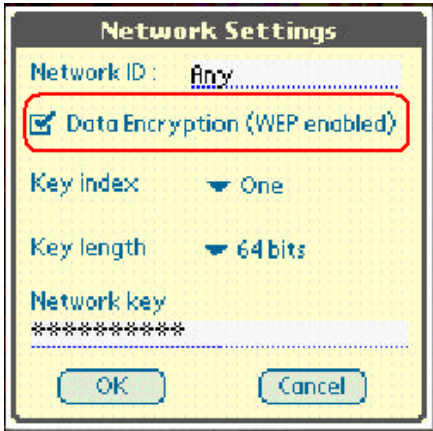
4. **Enter Network ID.** The Network ID is also referred to as the SSID. To enter your Network ID Tap on **ANY**. If your wireless network does not require a Network ID (SSID) you can leave the Network ID as ANY.



5. Entering a new Network ID (SSID). In the Network ID field highlight ANY and then enter your Network ID (SSID) of your access point.



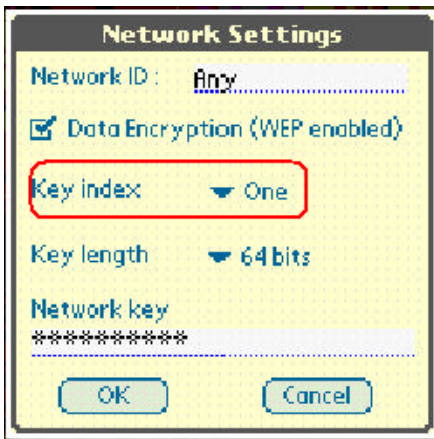
- 6. Encryption level.** By default Data Encryption is disabled. To enable encryption select Data Encryption (WEP enabled). Wired Equivalent Privacy (WEP) is a security protocol used to provide security for a wireless network.



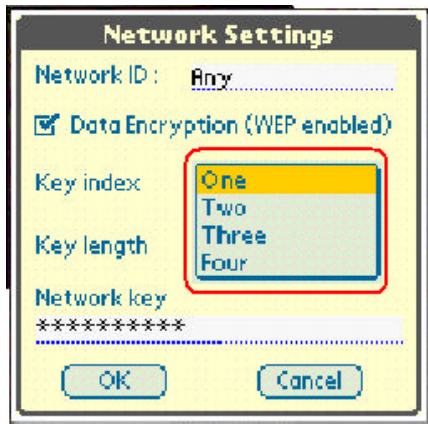
- 7. To Disable WEP** make sure Data Encryption (WEP enabled) is unchecked. Jump to step 13 to save settings if you disable WEP.



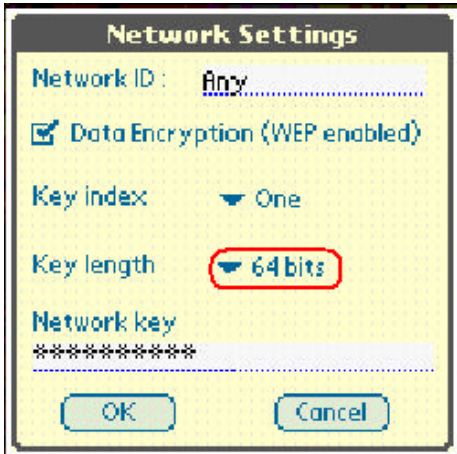
8. **Key index.** Tap on the drop down box to choose the Key index.



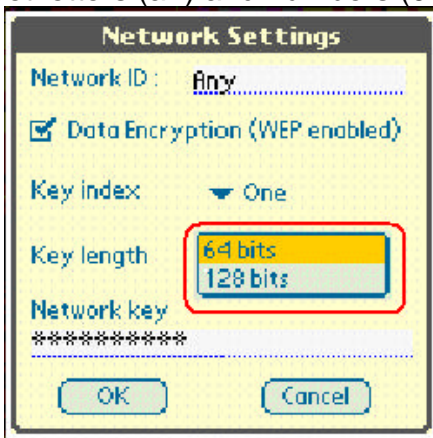
9. Select the Key index.



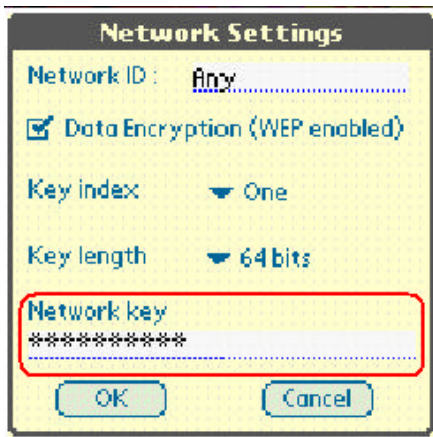
10. **Key Length.** Tap on the drop down box to choose the Key length.



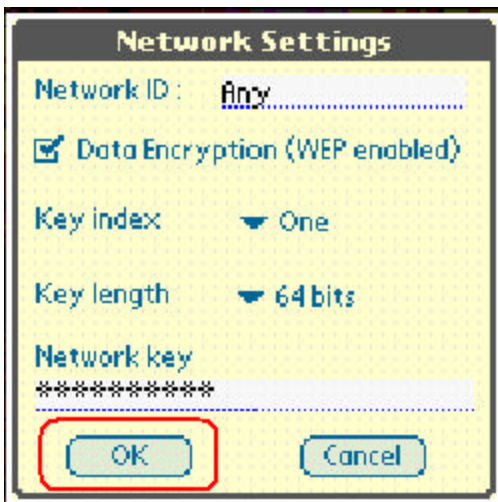
11. Selecting a key length of 64 bits will required a hexadecimal password (10 figures) consisting of alphabet letters (a-f) and numbers (0-9). Selecting the key length of 128 bits will require a hexadecimal password (26 figures) consisting of alphabet letters (a-f) and numbers (0-9).



12. **Network Key.** Highlight the Key field input area and enter your network key. The Network key is fixed and dependent on your access point.



13. **Save settings.** Tap on OK to save the settings.



14. **Connecting.** Select Connect in the bottom right corner of the window to connect.



15. Once the Wireless Portfolio is configured you do not need to use the Manager to make a wireless connection. Simply select your web browser and the wireless connection will be started. Remember to power on the Wireless Portfolio before selecting your web browser.

Wireless Portfolio LED's

The top LED is the status light.

Flashing green – Data transmitted

Solid green – Established connection

The bottom LED is Battery level/power.

Solid green – Good charge

Solid yellow – low battery. Recharge battery

Flashing yellow – low battery. Recharge battery

Battery Charging

To charge the wireless Portfolio plug the AC-to-DC power adaptor cord into the DC jack located on the bottom left side of the Wireless Portfolio.

Battery LED (bottom LED)

Flashing green – charging

Solid green – Charge complete

Palm® devices that can be used with the Wireless Portfolio

i705
m515
m500
m130
m125

Beta Version