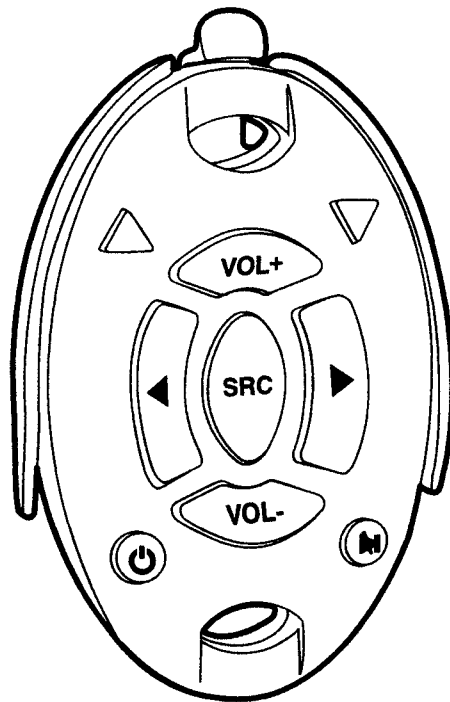


**MBQUART**  
NAUTIC AUDIO

# Operation and Installation Manual

---



**MRC-2**  
Watertight Marine  
Radio Controller  
with Speed Indicators

## Introduction

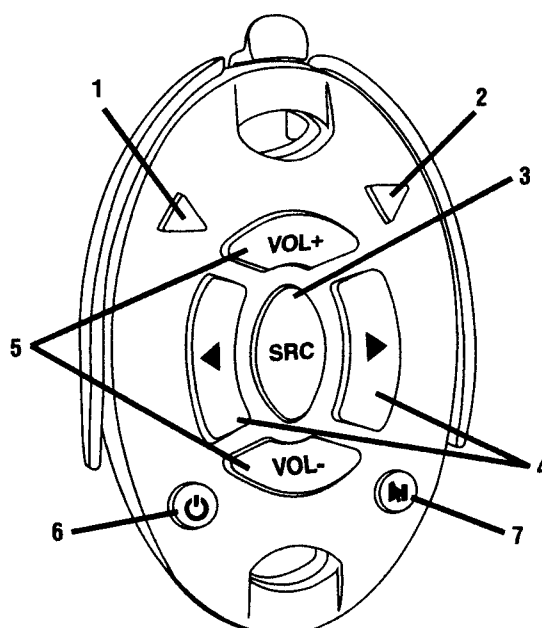
Please carefully read all of the information in this manual. Familiarity with operation and installation procedures will help you obtain the best possible performance from your new Marine Radio Controller.

## Safety Information

DO NOT OPEN COVERS AND DO NOT REPAIR BY YOURSELF. PLEASE REFER SERVICING TO A QUALIFIED TECHNICIAN.

CHANGES OR MODIFICATIONS TO THIS PRODUCT NOT APPROVED BY THE MANUFACTURER WILL VOID THE WARRANTY AND WILL VIOLATE FCC APPROVAL.


## Button Locations and Functions

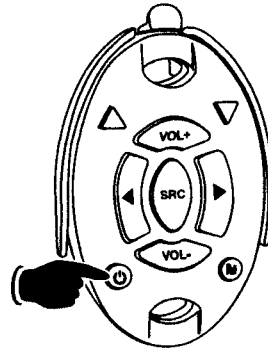


1. **Speed-Up Button:** Press to alert driver to speed up. Driver's speed-up indicator will flash twice.
2. **Slow-Down Button:** Press to alert driver to slow down. Driver's slow-down indicator will flash twice.
3. **Source Button (SRC):** Press to change the source/mode: Radio, CD and Aux. Depending on what other input sources are connected (IPOD Sirius, USB and CD Changer) these sources will also be available for selection.
4. **Tune/Track Buttons:**
  - Radio:** Press either button and the tuner will scan to the next strong station and stop.
  - Note:** Depending on the radio the tuner may only move to the next frequency digit instead of scanning to the next strong stations. Refer to the radio's manual for more information.
  - CD Mode:** Press to change to a lower or higher track.
5. **Volume Control:** Press the **VOL+** button to increase the volume level and press the **VOL-** button to decrease the volume level.
6. **Power On/Off Button:** Press to turn the unit on or off.
7. **Mute Button:** Press to mute the volume level. Press again to restore.

## General Operations

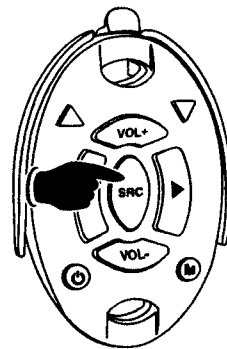
### Power On/Off:

Press the  button to turn the unit on or off.



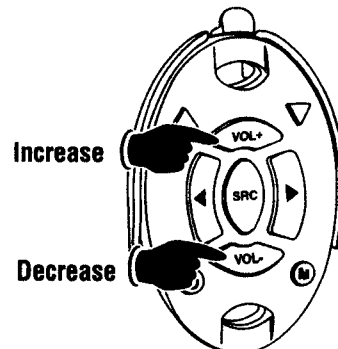
### Selecting a Source/Mode:

To select a play source, press the **SRC** button until the desired source/mode is selected.


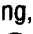



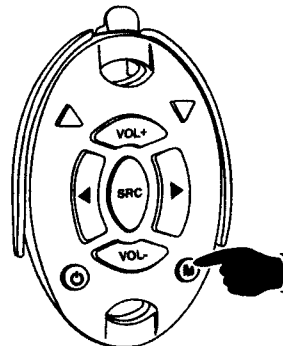
### Volume:

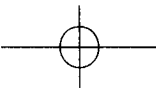
Increase the volume by pressing the **VOL+** button.  
Decrease the volume by pressing the **VOL-** button.



### Mute:

Press the  button to mute the volume level. If a CD is playing, the  button will pause the disc.  
Press the  button again to restore the volume or resume playing the disc.



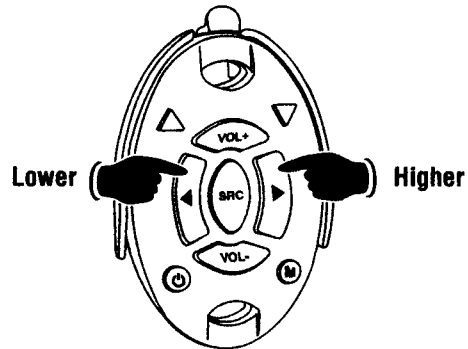


## General Operations

### Tuning in a Radio Station Using Seek:

Press either button and the tuner will scan up to the next strong station, stop seeking and start playing.

**Note:** Depending on the radio setting the tuner may move to the next frequency digit. Refer to the radio's manual for more information.



### Track Selection:

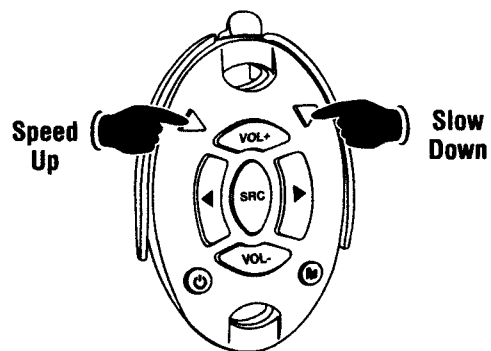
Press the ◀ button to select a lower track.  
Press the ▶ button to select a higher track.

### Speed-Up and Slow-Down Button:

Press the **Green** arrow button to illuminate the driver's speed-up indicator.

Press the **Red** arrow button to illuminate the driver's slow-down indicator.

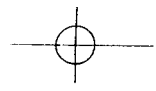
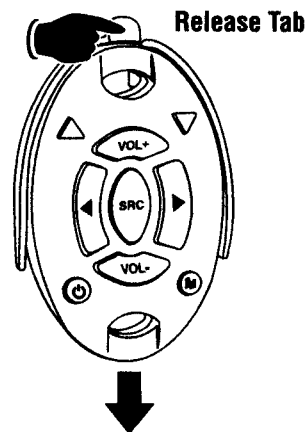
**Note:** Pressing either the Red or Green arrow button once will cause the driver's speed indicator light to flash twice.

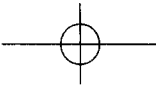


## Removing the Remote

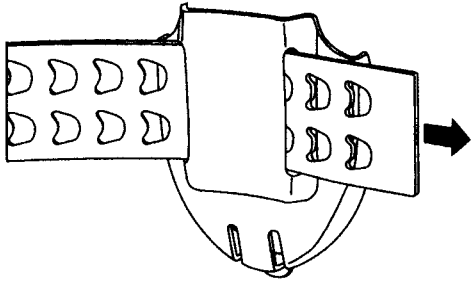
### Removing the Remote from Holder:

Press the release tab and slide out the remote.  
To reinstall, slide the remote into the holder until it snaps into place.



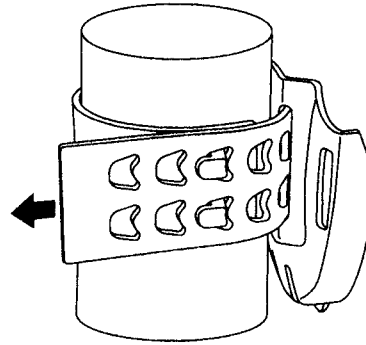


## Remote Installation



### Inserting Strap:

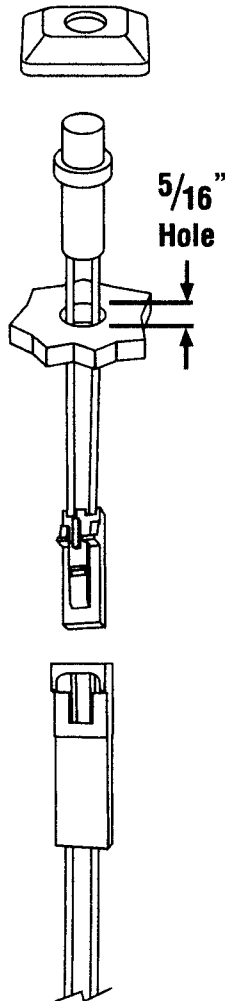
Insert strap through the remote holder with tabs facing outward.



### Connecting Strap:

Pull strap until the holes line up with the corresponding tabs to reach desired tension.

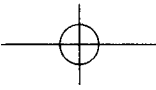
## Speed-Up/Slow-Down Indicator Installation



1. Find a desired location that is clearly visible to the driver.
2. Before installing the speed indicators, verify that there are no obstructions behind the location that could be damaged during installation.
3. Drill a 5/16" hole in the desired locations.
4. Feed the connector of the indicator cable through the hole until the LED is securely fastened.
5. Remove the backing from the indicator cover and attach the cover to the corresponding indicator.

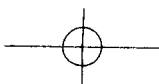
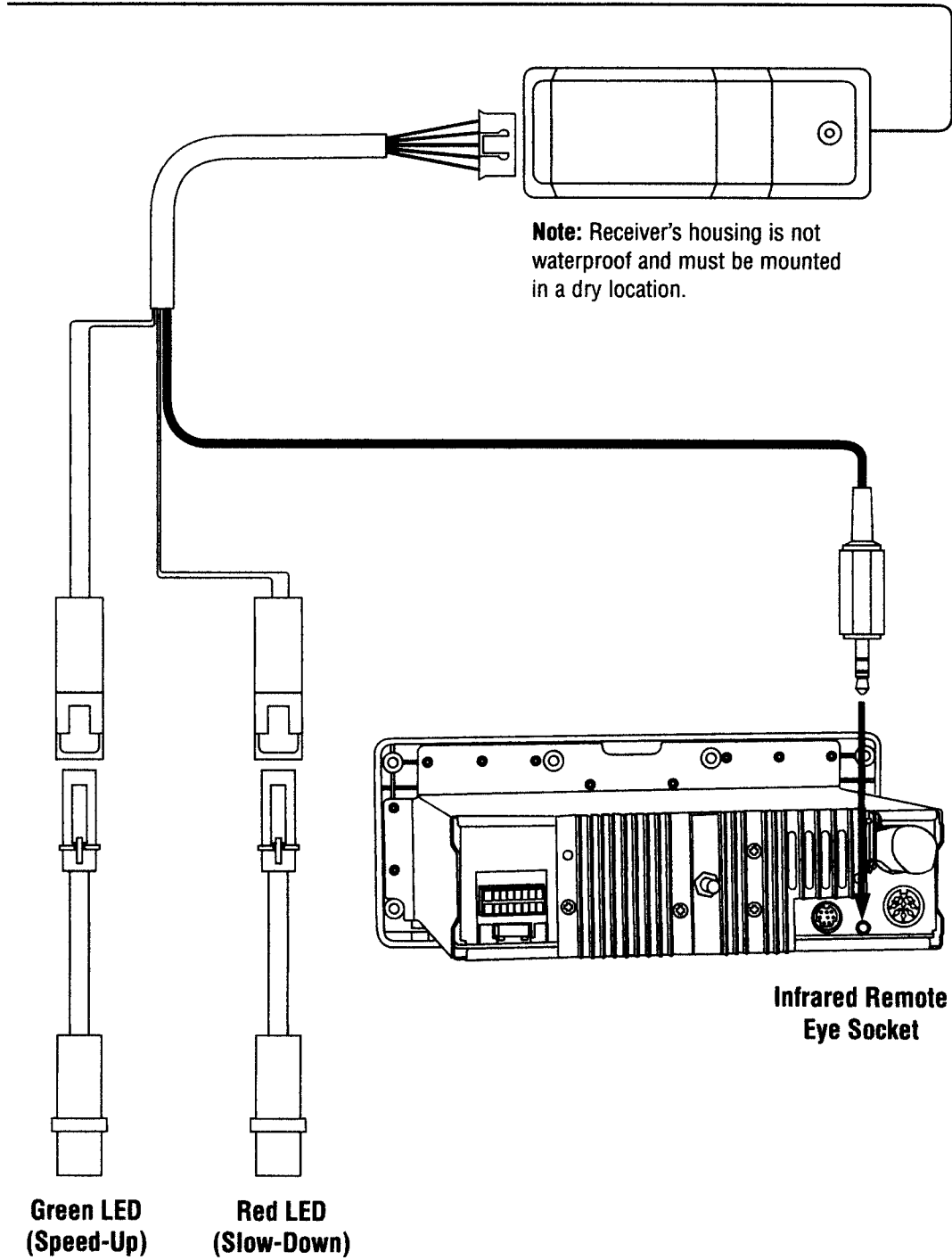
**Green Indicator = Speed-Up**

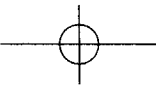
**Red Indicator = Slow-Down**



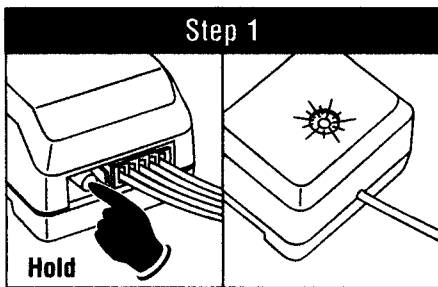
## Sound Controls

**Antenna Wire** Do Not Cut or Connect

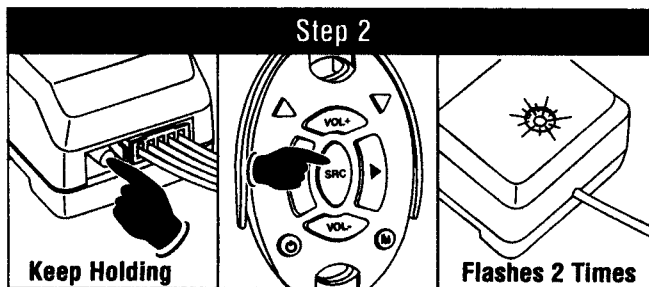




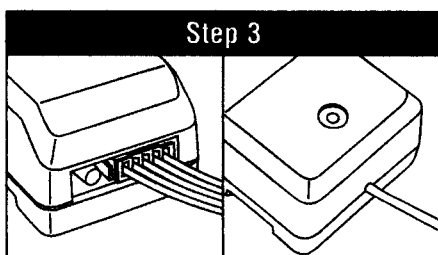
## Programming the Remote



Push and hold the button on the receiver until the LED turns on solid.

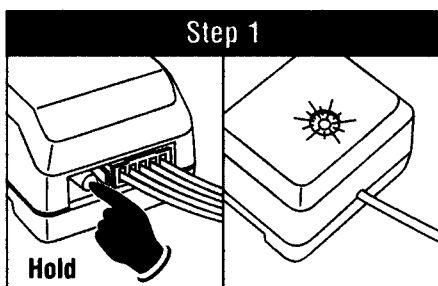


While continually pressing the receiver's button, press and release the **SRC** button on the remote. The LED on the receiver will flash 2 times then stay on indicating the code is learned.

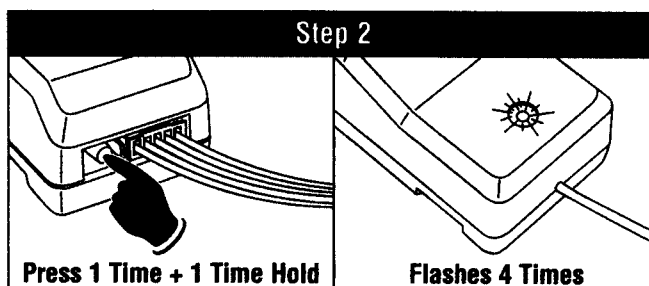


Release the receiver's button and the LED will turn off. Repeat steps 1-3 to program additional remotes. **Note:** Up to 4 remotes can be programmed.

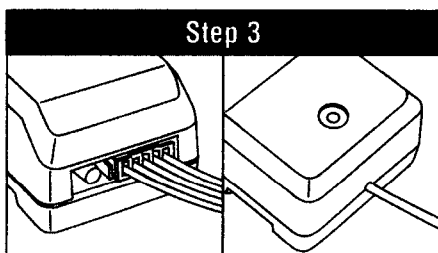
## Clearing Remote Codes



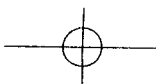
Push and hold the button on the receiver until the LED turns on solid.



Release and push the receiver button two more times, holding on the last push. The LED will flash four times indicating that remote codes are cleared.



Release the receiver's button and the LED will turn off.



## Warranty

### ONE (1) YEAR LIMITED WARRANTY

Magnadyne Corporation or its authorized agents will within one year from the date of sale to you, repair, replace or refund the retail sales price of said product or any part thereof, at the option of the Magnadyne Corporation or its authorized agents, if said product or part is found defective in materials or workmanship, when properly connected and operating on the correct power requirements designated for the specific product. This warranty and Magnadyne Corporation or its authorized agent's obligations hereunder do not apply where the product was; damaged while in the possession of the consumer, subjected to unreasonable or unintended use, not reasonably maintained, utilized in commercial or industrial operations, or serviced by anyone other than Magnadyne Corporation or its authorized agents, or where the warning seal on the product is broken or the power and/or plugs are detached from the unit. Magnadyne Corporation or any of its authorized agents will not assume any labor costs for the removal and reinstallation of any product found to be defective, or the cost of transportation to Magnadyne Corporation or its authorized agents. Such cost are the sole responsibility of the purchaser.

This warranty does not cover the cabinet appearance items or accessories used in connection with this product, or any damage to recording or recording tape, or any damage to the products resulting from improper installation, alteration, accident, misuse, abuse or acts of nature.

MAGNADYNE CORPORATION OR ITS AUTHORIZED AGENTS SHALL NOT BE LIABLE TO ANYONE FOR CONSEQUENTIAL OR INCIDENTAL DAMAGES OR CLAIMS EXCEPT THOSE ACCORDED BY LAW. NO EXPRESSED WARRANTY OR IMPLIED WARRANTY IS GIVEN EXCEPT THOSE SET FORTH HEREIN. NO IMPLIED WARRANTY SHALL EXTEND BEYOND ONE YEAR FROM THE DATE OF SALE.

This warranty extends only to the original purchaser of the product and is not transferable. Some states do not allow limitations on how long an implied warranty lasts, and some states do not allow the exclusion or limitation of incidental or consequential damages, so the above limitations or exclusion may not apply to you. This warranty gives you specific legal rights, and you may have other rights that vary from state to state.

**“NOTE: The manufacturer is not responsible for any radio or TV interference caused by unauthorized modifications to this equipment. Such modifications could void the User's authority to operate the equipment.”**

Defective merchandise should be returned to the original point of purchase or secondly, to Magnadyne Corporation, 1111 W. Victoria Street, Compton CA 90220.

Return Authorization must be obtained before sending, or merchandise may be refused.



Notice : The changes or modifications not expressly approved by the party responsible for compliance could void the user' s authority to operate the equipment.

IMPORTANT NOTE: To comply with the FCC RF exposure compliance requirements, no change to the antenna or the device is permitted. Any change to the antenna or the device could result in the device exceeding the RF exposure requirements and void user' s authority to operate the device.

This device complies with Part 15 of the FCC Rules. Operation is subject to the following two conditions: (1) this device may not cause harmful interference, and (2) this device must accept any interference received, including interference that may cause undesired operation.