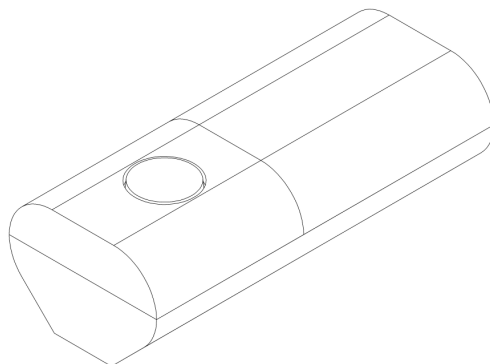


NCZ-3041 MOTION SENSOR

User Guide



Product Summary:

Nyce Control's NCZ-3041 is a wireless motion sensor using the ZigBee radio protocol. It is used in conjunction with a low RF transmit power wireless ZigBee network to monitor the occupancy state of indoor areas, and provide this information to other devices operating in a ZigBee Home Automation network.

- Button functions: Identify/join Network
- Accurate battery voltage level measurement and reporting back to co-ordinator
- Network operation based on the *ZigBee* open profile Home Automation
- Up to 4 years projected battery life

Specifications:

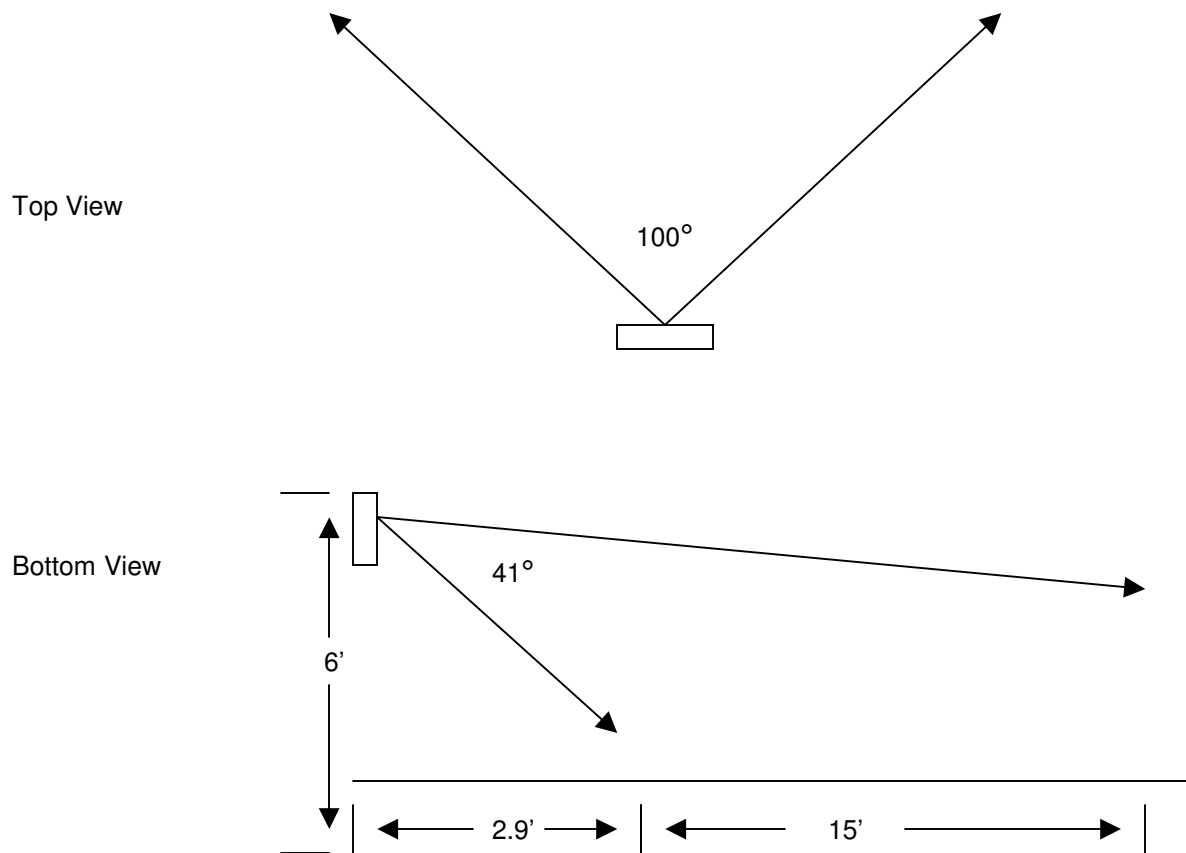
Detection Range	5m
Horizontal Detection Range	+/- 47°
Vertical Detection Range	+/- 41°

Installation Guidelines:

- If using double sided tape for mounting sensor, thoroughly clean the surface to ensure proper adhesion because dust and particles can reduce the adhesion of the tape
- Open the case and insert the battery, noting the correct polarity. Close the cover.
- Place the NCZ-3041 indoors and away from sources of water/moisture and extreme weather conditions
- Press the button once to join the network
- Snap in front cover to mounted rear cover.

Placement Guidelines:

Place the motions sensor facing where you want to detect motion. Measurements below are approximate.



Troubleshooting:

To improve communication:

- Reposition the sensor
- Relocate the sensor
- Move a ZigBee router / range extender closer to the sensor
- If necessary, replace the sensor

Technical Specifications:

- Model Number: NCZ-3041
- Battery Type: 3.0 V CR2 850 mAh Lithium
- RF Frequency: ZigBee channels 11-26, 2.48 GHz
- Operating Temperature: -10°C to 50°C (14°F to 122°F)
- Dimensions: 20mm x 29mm x 65mm

Battery Replacement:

- Remove front cover to expose battery
- Replace with 3.0 volt CR2 850 mAh Lithium, noting the correct polarity of the battery

Button Functionality:

Action	ZED State	Description
Press and release once	Not joined to any network	Attempt to join the a Home Automation profile network (Open Standard)
	Joined to the network	Identify to the network
	Identifying to the network	Stop Identifying, form Group.
Press and release two times	Any state	LED flashes indicate whether ZED is joined to a network or not.
Press and release four times	Not joined to any network	Attempt to join a Control 4 network
Press and release six times	Joined to a Control 4 or Open Standard network	Leave the network
Press and release ten times	Any state	Reset to factory settings.
Press and hold for 4 seconds	Joined to a Control 4 network	Leave Control 4 network

LED Indicators:

Colour	Behaviour	Description
Red	Flash 2 times	Failed to join a network, or forced to leave, or not joined when queried (2 button presses)
	Flash once	Initial detection of Occupancy or Motion
	Flash 3 times	Provisioning failed
Green	Flash 2 times	Successfully joined a Home Automation Network, or is currently joined
	Flash 3 times	Provisioning succeeded
	Flash 5 times	Successfully reset to factory defaults
Orange	Flash 2-5 Hz	Identify mode
	Flash 1 time	Unsupported button command
	Flash 5 times	Communication or device error

MODEL #: NCZ-3041
FCC ID: Y8R-Z30411
IC ID: 9488A-Z30411



Compliance Statements:

For complete declarations and certifications please visit:

www.nycecontrol.com/compliance

Notices

This device complies with part 15 of the FCC rules. Operation is subject to the following two conditions:

(1) this device may not cause harmful interference, and (2) this device must accept any interference received, including interference that may cause undesired operation.

Note: the manufacturer is not responsible for any radio or TV interference caused by unauthorized modifications to this equipment. Such modifications could void the user's authority to operate the equipment.

Changes or modifications not expressly approved by NYCE Control, Inc can void the user's authority to operate the equipment.

This device complies with Industry Canada license-exempt RSS standard(s). Operation is Subject to the following two conditions: (1) this device may not cause interference, and (2) this device must accept any interference, including interference that may cause undesired operation of the device.

Warranty:

For product warranty information please visit:

www.nycecontrol.com

Support:

For product support please email:

support@nycecontrol.com