

User Guide

ST-570 RFID Hour Meter



10 Controls Drive, Shelton CT 06484
203.929.8431

www.oemdd.com

OEM
DATA DELIVERY
A Division of OEM Controls, Inc.



WARNING: It is the purchaser's responsibility to determine the suitability of any OEM Controls, Inc. product for an intended application and to ensure that it is installed and guarded in accordance with all federal, state, local and private safety and health regulations, codes and standards.

We can advise you of the various features that are available, but we believe that our customer's engineering departments should be qualified experts in their own product field. If the product will be used in a safety critical application, the customer must undertake appropriate testing and evaluation to prevent injury to the ultimate user.

Should you have any questions or if any of the above warning is unclear, please contact OEM Controls, Inc. at 10 Controls Drive, Shelton, CT, 06484, FAX: 203.929.3867, TEL: 203.929.8431



WARNING: Changes or modifications not expressly approved by the party responsible for compliance could void the user's authority to operate the equipment.

NOTE: This equipment has been tested and found to comply with the limits for a Class A digital device, pursuant to part 15 of the FCC Rules. These limits are designed to provide reasonable protection against harmful interference when the equipment is operated in a commercial environment. This equipment generates, uses, and can radiate radio frequency energy and, if not installed and used in accordance with the instruction manual, may cause harmful interference to radio communications. Operation of this equipment in a residential area is likely to cause harmful interference in which case the user will be required to correct the interference at his own expense.

This device complies with part 15 of the FCC Rules. Operation is subject to the following two conditions: (1) This device may not cause harmful interference, and (2) this device must accept any interference received, including interference that may cause undesired operation.

This equipment complies with the FCC RF radiation exposure limits set forth for an uncontrolled environment. This equipment should be installed and operated with a minimum distance of 20 centimeters between the radiator and your body.

This device complies with Industry Canada licence-exempt RSS standard(s). Operation is subject to the following two conditions: (1) this device may not cause interference, and (2) this device must accept any interference, including interference that may cause undesired operation of the device.

Le présent appareil est conforme aux CNR d'Industrie Canada applicables aux appareils radio exempts de licence. L'exploitation est autorisée aux deux conditions suivantes : (1) l'appareil ne doit pas produire de brouillage, et (2) l'utilisateur de l'appareil doit accepter tout brouillage radioélectrique subi, même si le brouillage est susceptible d'en compromettre le fonctionnement.



A Division of OEM Controls, Inc.

10 Controls Drive, Shelton CT 06484

203.929.8431

www.oemdd.com

Contents

Section 1

Overview ST-570 Hour Meter	1
---	----------

Section 2

Installation Guidelines	1
--------------------------------------	----------

Caution	1
Document the ST-570 RFID Serial # and the machine #n	1
Mounting the ST-570.....	1

Section 3

Fueling with a ST-570 Hour Meter	2
---	----------

Unlock the Fuel Pump	2
Fueling with a ST-570 Hour Meter	2

Document Revision History

OEM Controls Inc; All rights reserved.

Disclaimer and Limitation of Liability

Document Number:

Revision: B

Date of Release: 4/26/2011

About this guide:

This guide provides basic instruction on the installation and use of the ST-570 Hour Meter.

Overview of the ST-570 Hour Meter

The ST-570 RFID hour meter is a lean, efficient device that captures and securely transmits equipment use information. Most importantly, it is wireless, paperless, and “hands-free”.

The unit’s interface consists of a user pushbutton and an indicator LED.

Installation Guidelines

CAUTION

- *Check machine frame voltage (e.g., positive ground or negative ground).*
- *Always be aware of moving parts. Give adequate slack in wires. Zip-tie everything, never leave anything hanging.*
- *Watch out for turbos and exhaust as they will burn or melt the wires.*
- *When mounting trackers, watch out for compartments that open, especially bob cats or other skid steers where the radiator assembly lifts up, so leave slack in wires to the Service Tracker.*
- *Know what you are drilling into BEFORE drilling (e.g., radiator, hydraulic tank, and fuse box).*
- *Always yell “CLEAR” and wait for a response before starting machine (e.g., dozer tracks, articulate steer vehicles)*
- *Never sit on tires, tracks, or moving parts, when starting a machine.*
- *Lower all attachments to the ground BEFORE shutting down the motor (e.g., dozer blade, backhoe bucket, & scraper belly).*

1. Document the ST-570-RFID Serial # & the Machine

Write down the **ST-570 Hour Meter serial number** located on the side of the tracker **and the machine number** that you are installing the unit on for documentation. This information must be reported back to the office for tracking purposes.

2. Mounting the ST-570 Hour Meter

- Turn off the engine and the master switch.
- Visualize how to run the wires from the battery box and the engine to the ST-570-H tracker. (We do not recommend mounting in an enclosed environment such as a battery box, metal engine bays, and closed cabs.)
- Mount the ST-570-H with the antenna pointed upward and secure the box using self- tapping screws.
- Drill a hole 3 inches below the ST-570-H - big enough to pull through the pigtail harness for the battery and sensor.
- Plug the connector from the pigtail into the ST-570-H, and push the two wires through the hole.
- Plug the hole with the rubber grommet attached to the harness.



Section 3

Fueling with a ST-570 Hour Meter

1. Unlock the Fuel Pump

1. Enter Password (Employee ID#) and Tap “Login”

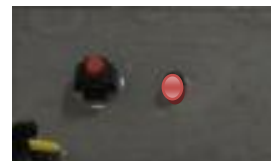
2. Fueling WITH a Service Tracker

1. Press the Button

Press & Hold the Red button on the ST-570 Hour Meter until the light stays on. Then you will see 6 quick flashes.

2. Fuel the equipment.

3. Tap “Logout.” The fuel record will display at the bottom of the Data Entry touch screen (HMI).



If you have any questions regarding this product, we will be happy to assist you.
Please contact us at:

OEM Controls, Inc.
10 Controls Drive
Shelton, CT 06484

(203) 929-8431
Fax: (203) 929-3867

www.oemdd.com

