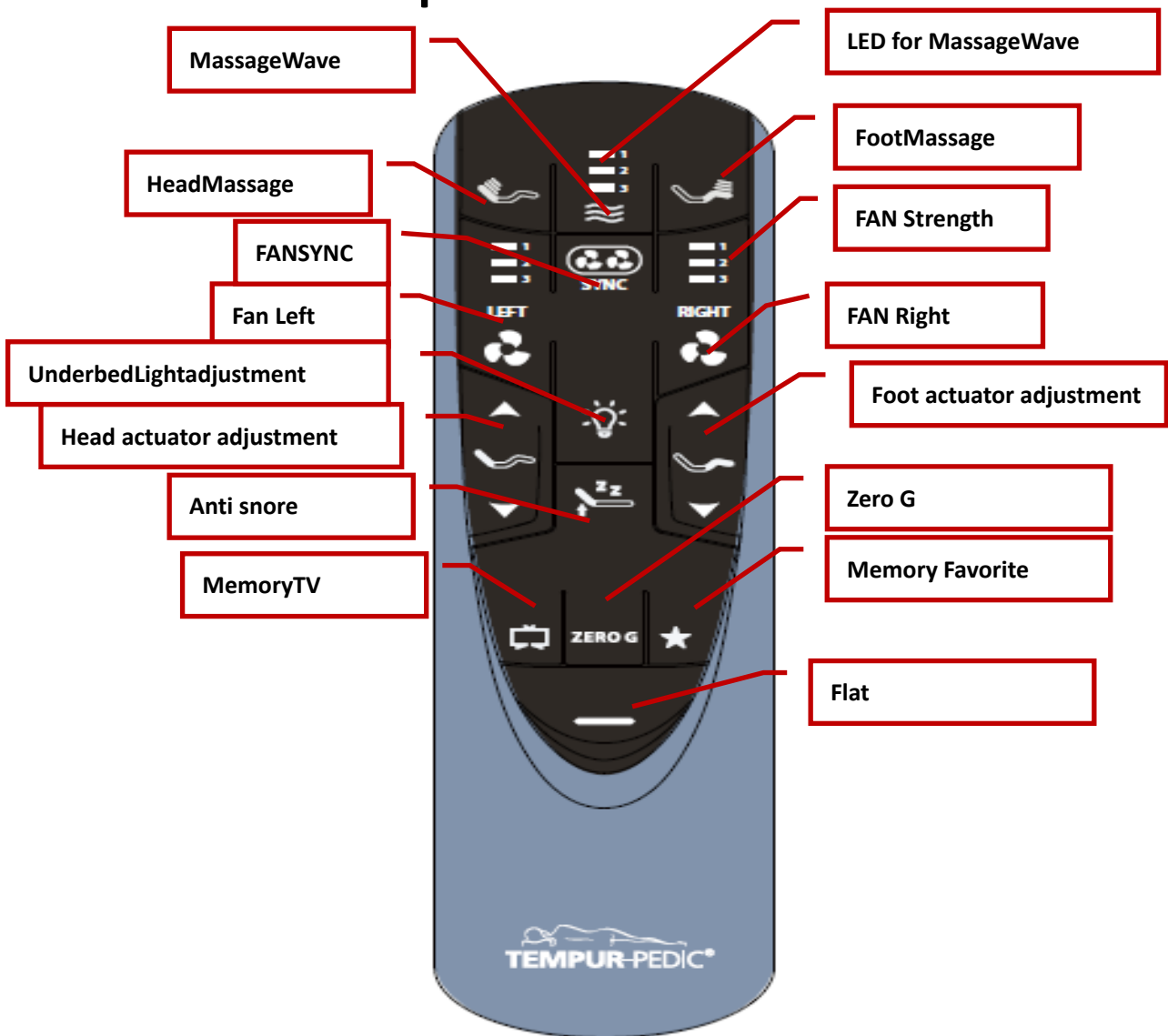


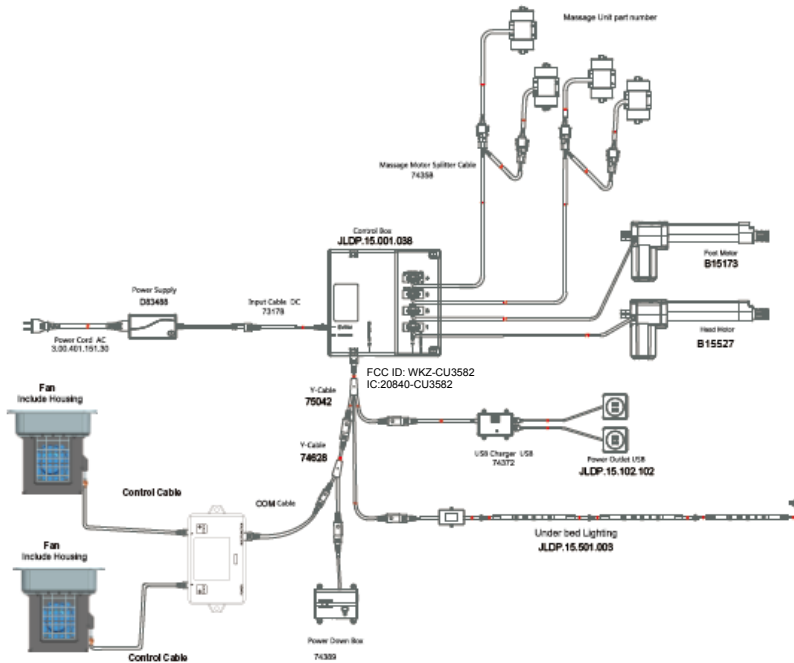
	Issuing Department: Bedding Division	Date:	2018-10-15
	Function Test Instructions	Author:	Aaron
		Model: RF358D	
Function Test Instructions of RF358D	Edition:	1.0	
	Page 1 of 8		

Function Instructions of RF358D

Product description



	Issuing Department: Bedding Division	Date:	2018-10-15
	Function Test Instructions	Author:	Aaron
Function Test Instructions of RF358D		Model: RF358D	
		Edition:	1.0
		Page 2 of 8	



Function description

1. Pairing code

Process of pairing code:

Double click RESET button on control box, pairing LED turns on, The control box enters the mode of code pairing;

Press and hold the code pairing button under battery cover, the backlight of pairing LED flashes, and the backlight of remote flashes, the remote enters into mode of code pairing;

The backlight of pairing LED stops flashing and the pairing LED of control box turns off, it indicates that the code pairing is successful;

If fails, repeat all the steps above;

2. Head actuator moves out

Press and hold the head upbutton, head actuator moves out, stop when released;

	Issuing Department: Bedding Division	Date:	2018-10-15
	Function Test Instructions	Author:	Aaron
		Model: RF358D	
Function Test Instructions of RF358D		Edition:	1.0
Page 3 of 8			

3. Head actuator moves in

Press and hold the headdown button, head actuator moves in, stop when released;

4. Foot actuator moves out

Press and hold foot up button, foot actuator moves out, stop when released;

5. Foot actuator moves in

Press and hold foot downbutton, head actuator moves in, stop when released;

6. Underbed lighting

Click underbed lighting button, turn on (or turn off) the undered lighting, it switches its status once when click the button every time;

7. FLAT function

Click FLAT button, head and foot actuators move to the lowest position(when the actuators are free, you can stop the massage motor, turn off the massage motor LED), running can be stopped by clicking any button;

8. ZERO G position

Click ZERO G button, head and foot actuators move to the memory position which is preset, running can be stopped by clicking any button;

9. ANTISNOREposition

Click ANTISNORE button, head and foot actuator actuators move to the memory position which is preset, running can be stopped by clicking any button;

	Issuing Department: Bedding Division	Date:	2018-10-15
	Function Test Instructions	Author:	Aaron
		Model: RF358D	
Function Test Instructions of RF358D		Edition:	1.0
		Page 4 of 8	

10. Memory Favorite position

Click Memory Favorite button, head and foot actuators move to the memory position which is preset, running can be stopped by clicking any button;

11. Memory TV position

Click Memory TV button, head and foot actuators move the memory position which is preset, running can be stopped by clicking any button;

12. Customized position button (ANTISNORE , Memory Favorite, Memory TV)

The custom setting processes are as follows:

1. Click FLAT button, flat the actuator;
2. Operate the head up or head down or foot up or foot down button, adjust the head actuator and foot actuator to an expected position;
3. Press and hold the button that needs customize position, hold for 5s, the LED on the top of the remote cycle flashes;
4. Release the button, LED stops flashing, it indicates that the customization is finished.

The default position setting can be restored to the default setting. Press and hold the ZERO G + FLAT button for about 5 seconds. The LED on the top of the remote cycle flashes, when the LED stops flashing, it indicates that the setting to the default position is finished.

13. Head massage adjustment function

Every time when click "HEAD massage" button, the intensity of head massage motor enhances by one level, there are three massage intensities totally. When in the third intensity, click "HEAD massage" button again, the intensity level switches to 0, the mode cycles;

	Issuing Department: Bedding Division	Date:	2018-10-15
	Function Test Instructions	Author:	Aaron
		Model: RF358D	
Function Test Instructions of RF358D	Edition:	1.0	
	Page 5 of 8		

14. Foot massage adjustment function

Every time when click "FOOTmassage" button, the intensity of head massage motor enhances by one level, there are three massage intensities totally. When in the third intensity, click "FOOT massage" button again, the intensity level switches to 0, the mode cycles;

	Issuing Department: Bedding Division	Date:	2018-10-15
	Function Test Instructions	Author:	Aaron
		Model: RF358D	
Function Test Instructions of RF358D		Edition:	1.0
		Page 6 of 8	

16. Childlock

Press and hold Head Up & Head Down., after more than 6s, you can see the backlight flashes 2 rounds, which indicates that the remote turns on the child lock; if you press any button, the control box has no action;

Press and hold Head Up & Head Down, after more than 6s, you can see the backlight flashes 2 rounds, which indicates that the remote turns off the child lock; if you press any button, the control box has corresponding action;

17. Affiliated FAN function

This function is used as an accessory for the FAN control box. It is used by the sync cable access to control box MFP port. The functions are as follows:

1.17.1. Click the FAN L+ button to turn on the port B of fan control box which controls the low-mid-high output of fan, and there are third air volume which corresponds to the three indicators of FAN L led. The default fan is turned on for 10 hours. Click again to close the port B of fan control box.

Press and hold the FAN L+ button for more than 3s to turn on the step-down mode of the left fan; click again to switch the fan gear and automatically turn off the step-down mode;

1.17.2. Click the FAN R+ button to turn on the port A of fan control box which controls the low-mid-high output of fan, and there are third air volume which corresponds to the three indicators of FAN R led. The default fan is turned on for 10 hours. Click again to close the port A of fan control box.

Press and hold the FAN R+ button for more than 3s to turn on the step-down mode of the right fan; click again to switch the fan gear and automatically turn off the step-down mode;

1.17.3. Click FAN SYNC button to turn on the port A & B of fan control box which controls the low wind->mid wind->high wind->off of fan, corresponds the three indicators on both sides of the FAN L led and FAN R led, and the default fan is turned on for 10 hours, so that the cycle is repeated;

Press and hold the FAN SYNC button for more than 3s, and turn on the step-down mode of the two fans at the same time; click again to switch the fan gear and automatically close the step-down mode;

2.19.4. Press and hold the FAN L+ and FAN R+ button simultaneously. If it exceeds 3S, you can see that the backlight of the remote control flashes twice. The fan control box enters the demo mode. The default time is 5min. Press any FAN related button to turn off the fan control.

Remark:

LED 1 lights, it corresponds low wind, output duty ratio is 30%;

LED 2 lights, it corresponds mid wind, output duty ratio is 40%;

Made by:Jarek

Checked by:

Confirmed by:

	Issuing Department: Bedding Division	Date:	2018-10-15
	Function Test Instructions	Author:	Aaron
		Model: RF358D	
Function Test Instructions of RF358D		Edition:	1.0
		Page 7 of 8	

LED 3 lights, it corresponds high wind, output duty ratio is 50%;
All three LEDs are off to indicate that the fan function is turned off;



Step-down mode description:

In the current fan position, once the step-down mode is started, after the fan runs for 5 hours, it automatically switches to the corresponding weakened gear position. The corresponding relationship is as follows:

Fan gear	Gear duty cycle in normal mode	Step-down mode, gear duty cycle after 5 hours
1	30%	0%
2	40%	30%
3	50%	40%

18. Description of remote control current and backlight

After power on, observe the work current of remote (<40mA);

After the key operation, place still for 5s, the backlight of remote turns off and the remote enters into sleep mode. Observe the sleep current of remote control (< 10uA).

If the remote control enters into sleep mode, the remote can be wakened up by pressing any button or shaking; Continues to wake it up for 6 times and do not press any button, then you can only wake up the remote control by key operation.

Note: When the actuator is in flat position, and you press the memory position button, the motor can move to the theoretical angle or theoretical stroke, the error range will no more than 3 ° or 5mm.

	Issuing Department: Bedding Division	Date:	2018-10-15
	Function Test Instructions	Author:	Aaron
		Model: RF358D	
Function Test Instructions of RF358D		Edition:	1.0
		Page 8 of 8	

FCC Warning:

Any Changes or modifications not expressly approved by the party responsible for compliance could void the user's authority to operate the equipment.

This device complies with part 15 of the FCC Rules. Operation is subject to the following two conditions:

- (1) This device may not cause harmful interference, and
- (2) this device must accept any interference received, including interference that may cause undesired operation.

ISED RSS Warning:

This device complies with Innovation, Science and Economic Development Canada licence exempt RSS standard(s). Operation is subject to the following two conditions:

- (1) this device may not cause interference, and
- (2) this device must accept any interference, including interference that may cause undesired operation of the device.

Le présent appareil est conforme aux CNR d'ISED applicables aux appareils radioexempt de licence.

L'exploitation est autorisée aux deux conditions suivantes:

- (1) l'appareil ne doit pas produire de brouillage, et
- (2) l'utilisateur de l'appareil doit accepter tout brouillage radioélectrique subi, même si le brouillage est susceptible d'en compromettre le fonctionnement.