



User Guide

OMBEA Response 360™

ver. 1.0.0 for Microsoft Windows



Thank you for choosing an Audience Response System from OMBEA.

Please visit www.ombea.com to get the latest updates for your system.

Copyright © 2014 OMBEA AB. All rights reserved.

With the exception of that which follows from compulsory legal requirements, OMBEA AB is under no circumstances responsible for loss of data, income or any special, temporary, consequential, or indirect damages, regardless of the cause of the loss or damage.

NO PART OF THIS DOCUMENT MAY BE REPRODUCED IN ANY FORM OR IN ANY WAY, OR TRANSLATED INTO ANY LANGUAGE AT ANY TIME WITHOUT PRIOR WRITTEN PERMISSION FROM OMBEA.

OMBEA RESERVES THE RIGHT TO CHANGE THIS DOCUMENT OR WITHDRAW IT WITHOUT ANY PRIOR NOTICE.



OMBEA ResponsePad™, OMBEA RemotePad™ and OMBEA ResponseLink™ have been tested and are in compliance with the following EC directives:

EN 300 328
EN 300 328
EN 301 489
EN 60950-1
EN 55022
EN 55024

For further information and for a declaration of conformity, please contact OMBEA support.

FEDERAL COMMUNICATIONS COMMISSION INTERFERENCE STATEMENT

OMBEA ResponsePad™, OMBEA RemotePad™ and OMBEA ResponseLink™ have been tested and found to comply with the limits for a Class B digital device, pursuant to part 15 of the FCC Rules. These limits are designed to provide reasonable protection against harmful interference in a residential installation. This equipment generates, uses and can radiate radio frequency energy and, if not installed and used in accordance with the instructions, may cause harmful interference to radio communications. However, there is no guarantee that interference will not occur in a particular installation. If this equipment does cause harmful interference to radio or television reception, which can be determined by turning the equipment off and on, the user is encouraged to try to correct the interference by one or more of the following measures:

- Reorient or relocate the receiving antenna.
- Increase the separation between the equipment and receiver.
- Connect the equipment into an outlet on a circuit different from that to which the receiver is connected.
- Consult the dealer or an experienced radio/ TV technician for help.

CAUTION:

Any changes or modifications not expressly approved by the grantee of these devices could void the user's authority to operate the equipment.

These devices comply with Part 15 of the FCC Rules. Operation is subject to the following two conditions: (1) these devices may not cause harmful interference, and (2) these devices must accept any interference received, including interference that may cause undesired operation.

Chapter 1. Quick Start	6
Polling	6
Start the poll	6
Show the Question window	6
Show the Results window	6
Close the poll	6
Jump to a question	6
Pose a spontaneous question	6
Show the results for a previous question	6
Chapter 2. Control Panel	8
Chapter 3. Question List	9
Adding and deleting questions	9
Adding a question	9
Adding answer options	9
Add further answer options	9
Deleting an answer option	9
Assign points to answer options	9
Adding a question	9
Deleting a question	9
Copying questions	9
Moving questions	9
Question Types	10
Multiple Choice	10
Free Text	10
Properties	10
Grouping participants	10
Edit the number of allowed responses per participant	10
Allowing duplicates	10
Priority ranking	10
Anonymous questions	11
Creating and saving question lists	11
Adding a question list	11
Saving a question list	11
Chapter 4. Participants	12
Using the Participant Manager	12

Adding a column	12
Deleting columns.....	12
Adding participants.....	12
Deleting participants.....	12
Adding a participant list	12
Saving a participant list	12
Changing column names.....	12
Sort by column	13
Participant ID	13
Device ID	13
Chapter 5. Response Devices	14
Configure response devices	14
Change channel.....	14
Synchronize and update.....	14
ResponseApp Manager	14
Configure RemotePad	15
Button explanation	15
Pair with OMBEA Response.....	15
Change the programmable buttons	15
Chapter 6. Settings	16
Charts	16
Chart colors.....	16
Chart values.....	16
Show results	16
Auto toggle results	16
Presentation.....	16
Fonts.....	16
Window transparency.....	16
Chapter 7. Session management.....	18
Saving and opening a session	18
Saving a session	18
Opening a session	18
Upload your results to OMBEA Connect.....	18
Chapter 8. History	19
Managing results	19

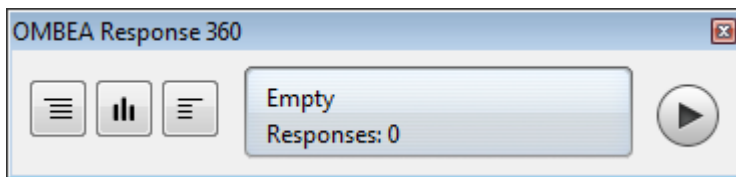
Show the results window for a question	19
Show the Question window for a question.....	19
Deleting a question	19
Clear session history	19
Generate a report	19
Scoring Report.....	20
Question Analysis Report.....	20
Group Report (percentage)	21
Group Report (count)	21
Participant List with Total Score	21
Participant List with Total Score and Grades.....	21
Participant Report	21
Question List.....	21
Participant List	22
Chapter 9. Troubleshooting.....	23
Chapter 10. Terms and conditions.....	24

Chapter 1.

Quick Start

Polling


When you start OMBEA Response 360 you'll see the Poll window in the top right corner.



Start the poll


Click on the Play button in the Poll window to start the polling.

Show the Question window

The Question window displays the selected question and the available answer options. You can show or hide the question window by clicking on the *Question window* button. 

You can show the question in full screen by clicking on the full screen button in the Question window.

Show the Results window

The Results window displays the current result for the selected question. Results are updated automatically during the poll. You can show or hide the Results window for a question by clicking on the Results window button. 

Close the poll

Click on the Stop button to close the poll. If you have prepared a question list, the next question in the list will now be selected automatically.

Jump to a question

Jump to a particular question by selecting it in the list in the Poll window.

Pose a spontaneous question

Pose a spontaneous question by selecting *Empty* at the bottom of the list in the Poll window.

Show the results for a previous question

1. Open the menu button in the Poll window and then select *Show*



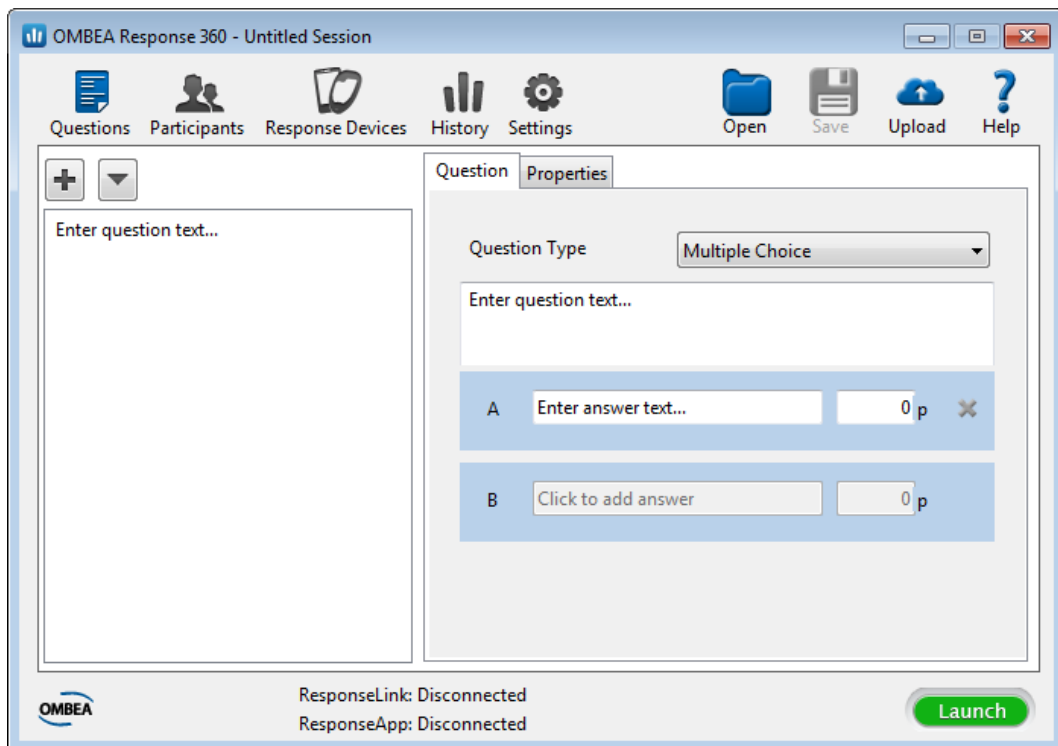
Control Panel. The History tab will now open in the Control Panel.

2. Click on the Question window button next to the question to display that question in the question window. Click on the Results window button next to the question to display the results for that question in the Results window.

Chapter 2.

Control Panel

In the Control Panel you have tabs for all the tools you need to work with your sessions. You open the Control Panel by clicking the menu button in the Poll window and *Show Control Panel*.



Chapter 3.

Question List

You can prepare a list of questions you intend to pose during your session. The question list can also be saved as a file for future use. Click *Questions* to start creating a question list.

Adding and deleting questions

Adding a question

Type in the question you wish to pose by clicking *Enter question text...*

Adding answer options

Add an answer option by clicking *Enter answer text...*

Add further answer options

Add another answer option by clicking *Click to add answer.*

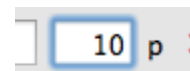
Deleting an answer option

Delete an answer option by clicking the red cross symbol.



Assign points to answer options

Assign points to an answer option by filling in the points in the box to the right of the response text.



Adding a question

You can add more questions by clicking on the plus sign.



Deleting a question

1. Highlight the question(s) you want to delete in the list on the left.
2. Click on the highlighted questions and press *Delete* on your keyboard.

Copying questions

1. Highlight the question(s) you want to copy in the list on the left.
2. Click on the highlighted questions and select *Copy*. You can also use the keyboard combination *Ctrl + C*.
3. Click on the list and select *Paste*. You can also use the keyboard combination *Ctrl + V*.

Moving questions

1. Highlight the question(s) you want to move in the list on the left.
2. Drag the question(s) to the new position.

Question Types

Multiple Choice

A multiple choice question consists of two parts: The question and up to ten answer options.

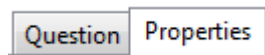
Free Text

A free text question allows participants to submit an opened ended response.

i Note: Free text questions are supported by the following response input methods: OMBEA ResponseApp. A free text response can have up to 180 characters.

Properties

Each question has certain properties associated with it.



1. Highlight the question you wish to set properties for in the list on the left.
2. Select the *Properties* tab.
3. Change one or more of the question properties.

Grouping participants

You can group participants dynamically by their selected answer option to a question by selecting *Properties* and checking the box marked *Grouping*. Analyse the group results afterwards in the Group report.

Edit the number of allowed responses per participant

If you want to change the number of responses each participant may give per question, select *Properties* and then change *Responses per participant* to the required number.

How ResponsePad users can erase all their responses for a question where multiple responses are allowed. Participants can erase their response sequence by pressing the button for an answer option that isn't available, or by submitting more than the allowed number of responses. Both these actions will result in a flashing red light on the participant's ResponsePad, indicating that their response sequence has been erased.

Allowing duplicates

To enable participants to select the same answer option more than once for a question which allows multiple responses, select *Properties* and check the box marked *Allow duplicates*.

Priority ranking

A priority ranking question allows participants to rank the answer options by submitting multiple responses to the question. The answer options are scored based on the response weights shown in the table below.

Order	Weight
First response	10
Second response	9
Third response	8
Fourth response	7
Fifth response	6
Sixth response	5
Seventh response	4
Eighth response	3
Ninth response	2
Tenth response	1

To enable priority ranking select *Properties* and check the box marked *Priority Ranking*.

Anonymous questions

To disable registration of each participant's Device ID during polling, select *Properties* and check the box marked *Anonymous*.

Creating and saving question lists

Adding a question list

You can import all the questions from an already existing question list by selecting the menu option *Add question list*, and browsing to the question list you wish to import.



Saving a question list

You can export the question list from the session for later reuse, by selecting the menu option *Save Question list*.



Chapter 4.

Participants

Under the Participants tab all the tools needed to manage the session participant list are found. You only need a participant list if you want to track the responses of individual participants.

Using the Participant Manager

Adding a column

1. Click Add Column
2. In the dialogue box that appears, specify a name for the column or if the column should specify the voting weight.

Deleting columns

1. Right-click the column name and select *Remove column*.

Adding participants

You can add participants by clicking on *Add Participant*. This will insert a new row at the bottom of the list.

Deleting participants

1. Highlight the rows for the participants you wish to delete.
2. Click the *Remove Participant* button.

Adding a participant list

You can import all the participants from an already existing participant list by clicking the *Add Participant List* button and browsing to the file with the participant list you wish to import.

Saving a participant list

To save your participant list, click the *Save to File* button.

Changing column names

1. Right-click the column name and select *Edit column*.

Sort by column

You can sort your participant list by a specified column by clicking on the header row for that column. Click on the column header row once again to change the sort direction.

Participant ID

Participant ID is a unique identification number for each participant. OMBEA Response 360 generates these numbers automatically.

Device ID

Device ID is a unique identification number for each response device located on the back of the ResponsePad device alternatively in the status field for ResponseApp. Thanks to the unique Participant ID you can change response devices during a session without losing the connection to past results. You can fill out the cell for the Device ID in two different ways:

- A Automatically, by selecting the participant for whom you want to enter a Device ID and press a button on the response device that you want to connect the participant to. The Participant Manager then automatically fills the correct cell and jumps down to the row below.
- B Manually, enter the Device ID by editing each cell.


Chapter 5.

Response Devices

Configure response devices

Change channel

In order to prevent interference with a nearby OMBEA Response system click *Response Devices* and *Configure*.

 *Note: After changing the channels, the ResponsePads must be synchronized. See synchronize and update.*

Synchronize and update


When the channels have been changed synchronization is required.

To synchronize the devices:

1. Click on *Response Devices* and click *Start Synch*.
2. In order to synchronize a ResponsePad device, press the yellow button for 5 seconds. A yellow LED light starts flashing which indicates the ongoing synchronization.
3. A successful synchronization is indicated by an LED showing green light on the ResponsePad device.
4. When all the devices have been synchronized, exit the synchronization by pressing on *Stop Synch*.

ResponseApp Manager

In order for ResponseApp users to be able to connect to your session, you first need to login to your presenter account. Login to your presenter account by clicking *Response Devices* and then *Login*. Enter your username and password and click *Login*.

 *Do not have a presenter account? Please contact your system administrator or contact OMBEA support.*

The user manual for ResponseApp can be found at: www.ombea.com

Configure RemotePad

OMBEA RemotePad is a remote control for OMBEA Response and Response OMBEA 360. This means that you are no longer bound to the computer; you can walk around freely in the classroom and still be able to control the polling.

Button explanation



Corresponds to the right arrow and left arrow on your keyboard.



Start, stop a restart a poll.



Programmable button.

Pair with OMBEA Response

To pair a RemotePad with OMBEA Response, click *Response Devices*, and then click *Pair*. Press a button on the RemotePad. The Device ID of the RemotePad is displayed. Click *Save*. The RemotePad is now paired with OMBEA Response.

Change the programmable buttons

The RemotePad device has four programmable buttons. To set what the buttons do, click *Settings* and select the function of each button under the heading *RemotePad*.

Chapter 6.

Settings

Under the Settings tab you can customize OMBEA Response 360 according to your needs.

Settings changes are saved automatically. Settings apply to the user account you are logged in on.

To revert to the original settings, click *Reset All*.

Charts

This section contains settings for customization of the results charts.

Chart colors

Select colors for the answer options in the chart. Click on the color of an answer option; this will open a color palette where you can select a new color of your choice.

Chart values

You can choose whether your chart shows the total number of responses for a particular answer option, or the percentage this represents.

Show results

You can choose whether you would like to show the results chart or not.

Auto toggle results

You can choose whether you would like to automatically hide the results during the poll or not.

Presentation

This section contains settings for customization of the presentation.

Fonts

Define the font and the font size for your questions and answer options in the Question window.

Window transparency

Define the transparency grade for your question and result windows, as a value between 0% (fully opaque) and 100% (fully transparent).

Chapter 7.

Session management

Saving and opening a session

A session contains a question list, all the results, and may also contain a participant list. When you open OMBEA Response 360 a new session is automatically started. The file extension for a saved session is .orts.

Saving a session

Save your current session by clicking on the *Save* button.



Opening a session

Click on the *Open* button to open an already existing session. Browse to the session file you wish to open and click on *Open*.




Upload your results to OMBEA Connect

OMBEA Connect offers you an easy way to track all the results for classes and individual students over time. Click on the *Upload* button to upload all the results from a session to OMBEA Connect.

1. Type in the login details for your presenter account.
2. Select session. You can choose whether to upload all the results from your current session, or to upload a session file.
3. Give the session a name.
4. Click on the *Upload* button.
5. All the session results are now uploaded and can be accessed under the given session name in the session manager on your presenter account.



You can check the *Remember me* box to automatically fill in your login details the next time you upload session results.

 *Do not have a presenter account?*

Please contact your system administrator or contact OMBEA support.

Chapter 8.

History

The History tab shows all the questions that have been posed during the session.

Managing results

Show the results window for a question

You can show or hide the Results window for a question by clicking on the button Results window next to question.

Show the Question window for a question

You can show or hide the Question window for a question by clicking on the button Question window next to question.

Deleting a question

To delete a previously posed question from the session history, click on the red cross to the right of the question.

Clear session history

To delete the results for all previously posed questions from the session history, click on *Clear History*.

Generate a report

By generating reports you can visualize and analyse the results saved in the session history.

To generate a report, click *Reports* and select the report you want to generate.

Question Report

The Question Report contains the following information for each question in the session:

- Answer alternatives.
- Number of responses per answer alternative.
- Percentage of responses per answer alternative.
- Column chart showing the results.

Requirements: none.

Scoring Report

The Scoring Report contains the following information for each question in the session:

- Number of responses.
- Achieved average score.
- Assigned max points.

The Scoring Report contains the following information for each participant:

- Answer to each question.
- Score for each question.
- Color code: Red = min score (usual 0 p). Green = highest score. Yellow = other scores.
- Total session score.

Requirements: the session contains scored questions.

Question Analysis Report

The Question Analysis Report contains the following information for each question in the session:

- Answer alternatives.
- Highlighted corrected answers.
- Number of responses per answer alternative.
- Percentage of responses per answer alternative.
- Difficulty index.
- Discrimination index.
- Column chart showing the indices.

The difficulty Index (D) measures the proportion that answered correctly. D varies between 0 and 1. D = 1 indicates that the question is considered to be very simple, while D = 0 indicates that the question is considered to be very difficult.

The discrimination index (DI) measures how well the question distinguishes participants with high total scores from participants with low total scores. DI varies between -1 and 1. A negative DI indicates that participants with low total scores are more likely to answer the question correctly than participants with high total scores, suggesting that the question should be modified. A positive DI indicates that participants with high total scores are more likely to answer the question correctly, suggesting that the question is well formulated.

T_U : The group of participants with the 25% highest total score.

T_L : The group of participants with the 25% lowest total score.

R_U : The number of participants from T_U who answered the question correctly.

R_L : The number of participants from T_L who answered the question correctly.

$$D = \frac{R_U + R_L}{T_U + T_L}$$

$$DI = \frac{R_U - R_L}{0.5(T_U + T_L)}$$

Requirements: the session contains none anonymous questions and answer alternatives with assigned points.

Group Report (percentage)

The Group Report contains the following information for each question in the session:

- Percentage of participants in each group who answered a certain answer alternative.

Requirements: the session contains static or dynamic groups.

Group Report (count)

The Group Report contains the following information for each question in the session:

- Number of participants in each group who answered a certain answer alternative.

Requirements: the session contains static or dynamic groups.

Participant List with Total Score

The Participant List with Total Score contains the following information for each participant:

- A field showing the total score.

Requirements: the session contains scored non-anonymous questions.

Participant List with Total Score and Grades

The Participant List with Total Score and Grades contains the following information for each participant:

- A field showing the total score.
- A field showing the grade based on provided limits.

The Participant List with Total Score and Grades contains the following information for the session:

- A pie chart showing the percentage of participants who achieved each grade.

Requirements: the session contains scored non-anonymous questions.

Participant Report

The Participant Report contains the following information for each participant:

- Answer to each question.
- Score on each question.
- Column chart showing the total score compared to the average score.

Requirements: the session contains scored non-anonymous questions.

Question List

The Question List contains the following information for each question:

- Answer alternatives.

Requirements: none.

Participant List

The Participant List contains the following information for each participant:

- Participant ID
- Device ID
- Other fields present in the Participant List Manager.

Requirements: the session contains non-anonymous questions.

Chapter 9.

Troubleshooting

By following the troubleshooting procedure below you will be back on track as soon as possible.

I have problems with OMBEA Response 360.

Step 1 Restart the computer and then start OMBEA Response 360.

Step 2 If the problem is not resolved or if the problem reappears, please contact Support at support@ombea.com or +46(8)-57239010.

There is no contact with OMBEA ResponseLink.

Step 1 Disconnect OMBEA ResponseLink.

Step 2 Wait 15 seconds.

Step 3 Connect OMBEA ResponseLink to a different USB port.

Step 4 If the problem persists: Restart the computer and try again.

Step 5 If the problem persists or if the problem reappears, please contact Support at support@ombea.com or +46(8)-57239010.

Chapter 10.

Terms and conditions

Restrictions: The software is confidential copyrighted information belonging to OMBEA AB. Customers may not modify, decompile, disassemble, decrypt, extract, or in any other manner reverse the development process of OMBEA Response®, OMBEA Response 360™, OMBEA ResponsePad™, OMBEA ResponseLink™ or OMBEA ResponseApp™. Parts or all of the software may not be rented out, disseminated or sublicensed.

© 2013 OMBEA AB. All rights reserved.

OMBEA Response® is a registered trademark that belongs to OMBEA AB, Microsoft®, PowerPoint® and Excel® and is a registered trademark of Microsoft Corporation.

OMBEA AB MAKES NO GUARANTEES, EXPLICIT OR IMPLICIT, REGARDING THE INFORMATION IN THIS USER MANUAL.