

CardMan[®] 5121 User's

DRAFT



This guide describes how to use CardMan 5121 with Windows 98, ME, 2000 or XP for working with contactless or contact smart cards.

To install your CardMan 5121 please follow the steps as described in the "CardMan 5121 Install Guide"

If you are developing applications for contactless cards please refer to the "CardMan 5121 Developer's Guide" for detailed informations about programming the CardMan 5121 and the respective middleware.

To receive further information, please contact
OMNIKEY

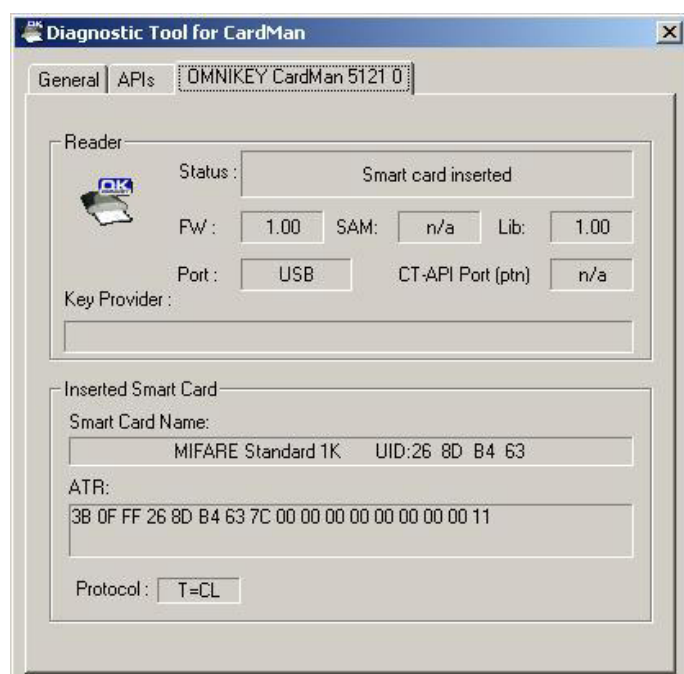
E-Mail: support@omnikey.com or visit our homepage www.omnikey.com

CardMan® 5121 User's**DRAFT***Diagnostic Tool - Testing your CardMan 5121*

After finishing the installation of the OMNIKEY CardMan 5121 driver, you will find a diagnostic tool icon in your Control Panel. Double-click the icon to start the tool. In addition to the "General" tab sheet, you should see an OMNIKEY CardMan 5121 sheet. Clicking it, you see the status of your reader.

Hold a contactless smart card near the OMNIKEY logo on the top side of the housing. You should now see the name of the card and the serial number. The bottom line shows the protocol T=CL (contactless).

When inserting a contact smart card in the reader's slot, you see the ATR of the card and the protocol for contact communication (T=0, T=1, synchronous – depending on the card).



To receive further information, please contact
OMNIKEY

E-Mail: support@omnikey.com or visit our homepage www.omnikey.com

CardMan[®] 5121 User's

DRAFT

Handling

To receive further information, please contact
OMNIKEY

E-Mail: support@omnikey.com or visit our homepage www.omnikey.com

CardMan[®] 5121 User's

DRAFT

Functional description

CardMan 5121 is a device to communicate with contactless smartcards using a radio field at a frequency of 13.56 MHz. The radio communication is translated into wired signals and sent to the connected PC over the USB interface.

...

To receive further information, please contact
OMNIKEY

E-Mail: support@omnikey.com or visit our homepage www.omnikey.com

CardMan[®] 5121 User's

DRAFT

Conformance Informations

FCC:

This device complies with Part 15 of the FCC rules. Operation is subject to the following two conditions:

- (1) This device may not cause harmful interference, and
- (2) this device must accept any interference received, including interference that may cause undesired operation.

Caution:

Any changes or modifications not expressly approved by the party responsible for compliance could void the user's authority to operate the equipment.

CANADA:

Operation is subject to the following two conditions:

- (1) this device may not cause interference, and
- (2) this device must accept any interference, including interference that may cause undesired operation of the device.

To receive further information, please contact
OMNIKEY

E-Mail: support@omnikey.com or visit our homepage www.omnikey.com