


Ultimate Multimedia Solutions

2.0

ONAIR USB HDTV

User's Manual



 onair solution

If you have any difficulties to use the products or have any questions, please contact our technical support for assistance.

Tel : 82-2-1588-6778

Fax : 82-2-2165-3376

URL : <http://www.onairsolution.co.kr> or
<http://www.usbhdtv.com>

E-mail : support@onairsolution.co.kr

Technical Support office hour

Mon-Fri : 10:00 AM - 17:00 PM

2nd, 4th, and 5th Sat : 10:00 AM -15:00 PM

1st and 3rd Sat or Holidays are closed.

Copyrights

Each involving company copyrights the software and the firmware in this manual.

Every software and firmware is protected under the intellectual property right and treaty, computer program preservation and copyright law and international copyright convention.

You cannot copy and excerpt this manual without permission.

Warranty

The warranty period is one year after a date of purchasing.

©2005 onairsolution Co., Ltd. All right reserved.

Made in Korea.

Important Safety Notice

(Always follow these instructions to help guard against personal injury and damage to your system.)

It is strongly recommend you to read the user's manual before you use the product.

※ There are two attention messages such as warning and notice.
The definition of warning and notice are following.



Warning

It may cause a serious injury or death if you violate the instruction



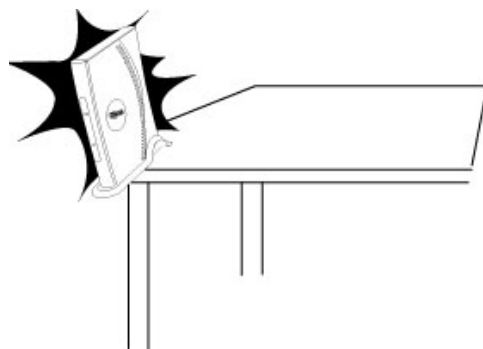
Notice

It may cause a minor injury or product damage if you violate the instruction



Should be careful to be secured against a specify condition.

The technical support expense will be charged to users if the damage causes by user's carelessness usage.



Contents

1	Introduction of OnAir USB HDTV	7
1.1	Main Specifications and Features	7
1.2	Package Included	8
1.3	System Requirements	9
1.4	Parts Description	10
2	Installation	11
2.1	Installation Checklist.....	11
2.2	Hardware Installation.....	12
2.3	OnAir USB HDTV Device Driver Installation	13
2.4	OnAir USB HDTV Application Software Installation	15
3	How to use.....	17
3.1	Screen Components.....	17
3.2	Option	22
4	FAQ	43
4.1	How to use Hot Keys.....	43
4.2	Remote Controller Button Description.....	45

1 Introduction of OnAir USB HDTV

1.1 Main Specifications and Features

The main specifications and features of OnAir USB HDTV are following.

🚦 Digital & Analog TV

- Full HDTV of 1920 X 1080 (ATSC)
- Digital (ATSC) HDTV / Analog (NTSC) TV
- AC3 / AAC Audio Decoding output

🚦 Recording & Playback

- Real-time or Schedule Recording
- Still Capture (JPEG or BMP File)
- Hardware MPEG2 Encoding for Analog Video Source (easy to create own DVD title via DVD-RW and tool) : Resolution 720 x 480
- Playback HD Stream File format (ATSC and Japan BS)
- Playback Analog TV File (MPEG2 DVD Stream : Resolution 720 x 480)
- Playback of HD Stream files (Random access)
- Time-Shift*
- D-VHS HD Stream playback or real-time recording (Win XP only)
- Provide OnAir HD Editor

🚦 External A/V Input & Output

- External A/V Input (Video, Stereo Audio, S-Video , NTSC/PAL Video)
- SPDIF Output through sound card (will support AAC)

🚦 Bundle WinDVD4 Player (InterVideo, Inc.)

🚦 Suitable Features

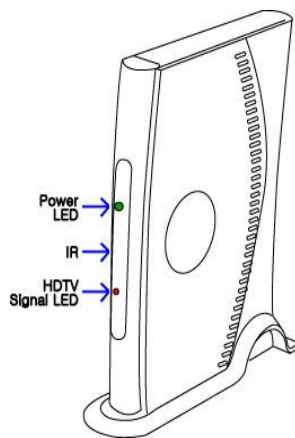
- Wall Paper TV View
- Zoom-In
- Various Aspect Ratios
- Individual Channel Color Adjustment
- Digital Signal Strength Display
- Sleep Timer
- Remote Control (IR Model Only)

* Time-Shift is ? While playing live Analog TV, the time shift offers you ability to pause the live TV for pre-defined period of time. It provides by recording Live TV in



real-time for pre-defined period of time while playing Live TV. It helps you to not miss any part of Live TV even though you stay away from TV for a while. (Analog TV only)

1.2 Package Included



1. OnAir USB HDTV/Stand



2. Remote Controller (AAA Batteries included)



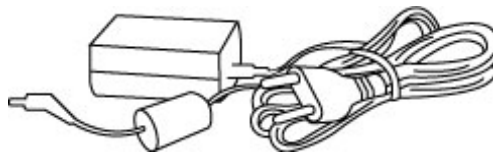
3. USB Cable



4. Installation CD



5. User's Manual



6. Power Adapter

If any one of items are missing, please contact our technical support at 82-31-909-7990.

1.3 System Requirements

- USB 2.0 port supported Desktop PC or Notebook (PCI / PCMCIA types of USB2.0)
- OS : MS Windows XP Service Pack 1 or above, MS Windows XP Media Center Edition (MCE 1.x)
- DirectX 9.0

Minimum system requirement (with DXVA support)

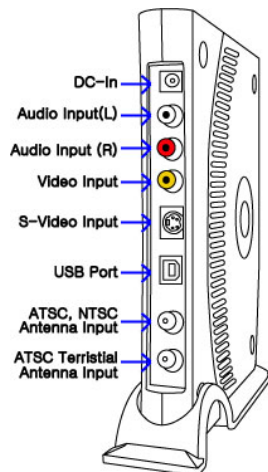
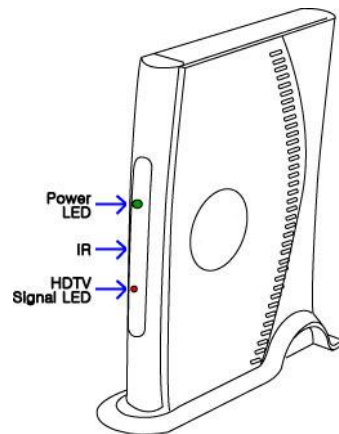
VGA	ATI RADEON 7200 or above ATI Mobility Radeon 7500 or above	Nvidia Geforce MX 440 or above Nvidia Geforce 4 Go or above
	Video Memory 32MB or above	
CPU	PentiumIII 800 Mhz or above / AMD Athlon XP or above	
Mem.	128MB (256MB Recommend)	

Minimum system requirement (not recommended, without DXVA support)

- VGA : AGP4X with video memory 32MB or above
- CPU : Pentium4 1.6Ghz or AMD Athlon XP
- Memory : 128MB (256MB Recommend)



1.4 Parts Description



- **Power LED** : The Power LED displays when the power is on to OnAir USB HDTV device and it connects with a computer system via USB cable.
- **IR** : This is a remote controller's signal reception part.
- **HDTV Signal LED** : The HDTV Signal LED displays when there is no Digital TV signal input.
- **DC-In** : The place of power adapter connects into OnAir USB HDTV.
- **Audio Input(L), Audio Input** : The stereo input of Video. Generally, it connects with Audio-Out of VTRs or the others.
- **Video Input** : Composite type of image input. Generally, it connects with Video Out of VTRs, Video Camera, and Camcorder.
- **S-Video Input** : S-Video type of image input. It connects with S-Video Out of Super-VHS VTRs or SEGA Saturn and SONY PlayStation, etc.
- **USB Port** : It connects with a computer system's USB2.0 port via USB cable.
- **ATSC, NTSC Antenna Input** : Either Cable or terrestrial digital antenna input.
- **ATSC Terrestrial Input** : Terrestrial Digital antenna input only.

2 Installation

2.1 Installation Checklist

2.1.1 Windows XP Service Pack 1 Installation

From the desktop menu of "My Computer", click the mouse's right button to open the "Properties". Then, find out what the current operating system is running on your system. If your operation system is not "Microsoft Windows XP Service Pack 1" then please install the "Service Pack 1" from the Windows Update through the internet

Please open Microsoft Internet Explorer, and choose the tool menu on top of menu bar and click the "windows update" and run the update scan. If the update scan is completed, there will be update scan result displayed. From the update scan result list, please install the Microsoft Windows XP Service Pack 1 from "Critical Updates and Service Pack".

2.1.2 USB2.0 Patch (HotFix)

Because the USB 2.0 is a new device, even Microsoft Windows XP Service Pack 1 has a bug on the USB 2.0 Device Driver.

At first, please confirm the "Windows XP HotFix - KB822603" is installed on your system from the "program add / remove" under control panel. If your system already installed this, your system had completed the patch of USB2.0 Device Driver Bug. If your system did not have this, please open Microsoft Internet Explorer, and choose the tool menu on top of menu bar and click the "windows update" and run the update scan. If the update scan is completed, there will be a list of update scan result displayed. From the list of update scan result, please find the "Windows XP SP1 recommended update (KB822603)" under Windows XP menu and install it on your system, or please download the HotFix from following URL and install it on your system.

<http://www.microsoft.com/downloads/details.aspx?amp;amp;displaylang=en&familyid=733dd867-56a0-4956-b7fe-e85b688b7f86&displaylang=en>

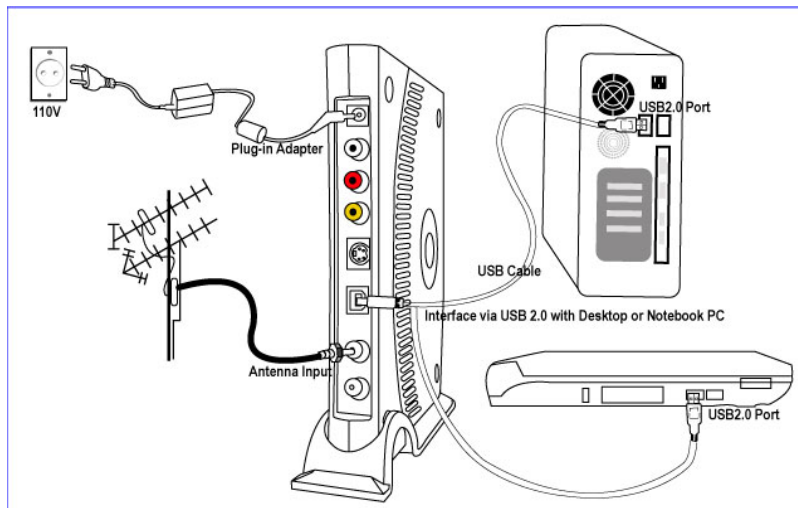


This HotFix patch program is released by Microsoft to fix a problem of failing recognition of USB 2.0 device.

2.2 Hardware Installation

OnAir USB HDTV is an external HDTV device that connected with personal computer or notebooks via USB2.0 port.

Please plug in the power adaptor into hardware, and connect with USB2.0 port of desktop computers or notebooks via USB cable.



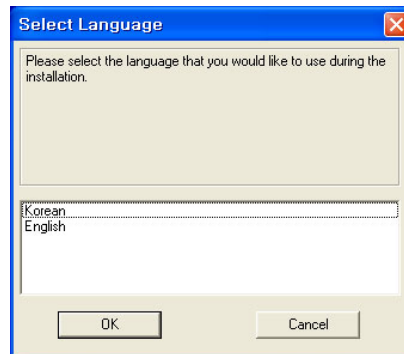
2.3 OnAir USB HDTV Device Driver Installation

Please insert the provided installation CD into your system's CD-ROM drive. The installation CD will automatically start the installation. From the displayed product list, select the driver installation under OnAir USB HDTV.

If the installation CD does not auto-run, please open window explorer to find the "installer.exe" file and execute the file.

2.3.1 OnAir USB HDTV Device Driver Installation for Windows XP

1. This is a dialog box of choosing a language of installation program. Please choose one of languages of either English or Korean, and press [OK] button to continue.



2. This is a dialog box of the warning notice to users that the driver may not be installed if the OnAir USB HDTV is connected to the system. If the OnAir USB HDTV is connected to your system's USB2.0 port, please remove it first and then click [Next] button to continue.

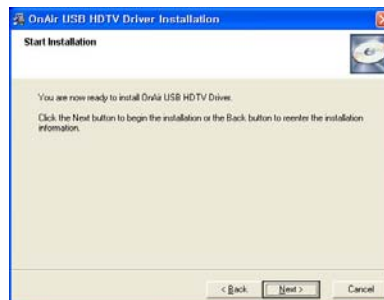




3. Please close all other application programs before running the installation, and click the [Next] button to continue.



4. If you are ready to run the installation program, please click the [Next] button to continue.



5. The OnAir USB HDTV device driver installation is completed. Please click the [Finish] button, and plug in the OnAir USB HDTV device into your system via USB2.0.



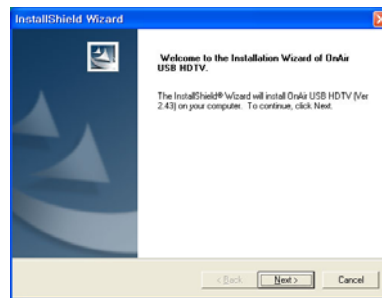
2.4 OnAir USB HDTV Application Software Installation

The given installation CD with package includes the application software of OnAir USB HDTV.

Please insert the provided installation CD into your system's CD-ROM drive. The installation CD will automatically start the installation. From the displayed product list, please select the application software under OnAir USB HDTV.

If the installation CD does not auto-run, please open window explorer and choose the "installer.exe" file to execute the installation.

1. The installation wizard of OnAir USB HDTV will guide you to install the application software. To continue the installation, please click [Next] button.

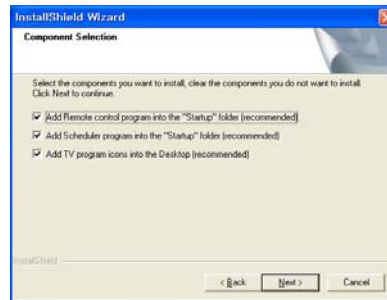


2. Please choose a designation folder location to install the software. If you would like to choose different folder location, please click [Browse] button and choose another folder location. Please click the [Next] button to continue.





3. Please choose items that you wish to install, and please click the [Next] button to continue.



4. The OnAir USB HDTV application software is successfully installed. To complete the installation process, please reboot your system. Please click the “Yes” button to reboot your system now or click “No” button to reboot system later. Please click the [Finish] button to complete the installation.



3 How to use

3.1 Screen Components

[TV Window]



[Operation Control Window]

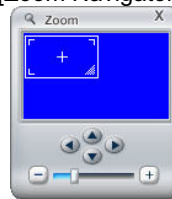
[Channel Window]



[Color Adjustment]

[Play List]

[Zoom Navigator]





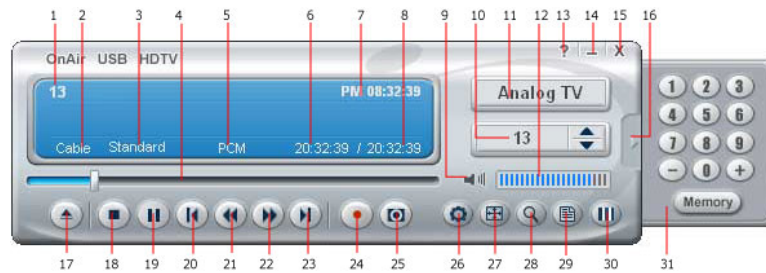
3.1.1 TV Window

It displays a video source input such as Digital TV, Analog TV, Video, and S-Video.

- **Hide** : It hide the TV window without closing TV program.
- **Close** : It closes the TV program.

The menu is displayed by clicking the right button of mouse when the mouse point is at TV Window.

3.1.2 Operation Control Window or Channel Window



- 1 : Display Channel Number
- 2 : Display current Antenna source
- 3 : Display current Aspect Ratio
- 4 : File playing position status bar (Analog TV: Live TV playing position for Time shift)
- 5 : Display current Audio Output
- 6 : Time Shift feature of displaying the start time of recording
- 7 : Display current Computer System Time
- 8 : Time Shift feature of displaying the last time of recording
- 9 : Mute
- 10 : Display and select a saved Channel number. The saved channel are changed by ▲ or ▼.
- 11 : Video input source
- 12 : Volume control
- 13 : Help
- 14 : Hide TV Window
- 15 : Close Operation control window (Hot Key : Ctrl + 1)
- 16 : Display or hide channel window

-
- 17 : Open File
 - 18 : Stop
 - 19 : Pause (When the Time shift activates, it pauses or play by toggling)
 - 20 : Previous (When the Time shift activates, it moves to at the beginning position.)
 - 21 : Jump to backward (When the Time shift activates, it moves back to a certain time period of previous record position)
 - 22 : Jump to forward (When the Time shift activates, it moves back to a certain time period of next record position)
 - 23 : Next (When the Time shift activates, it moves to Live mode)
 - 24 : Video Capture
 - 25 : Still Capture
 - 26 : Option
 - 27 : Aspect Ratio
 - 28 : Zoom (Zoom Navigator)
 - 29 : Play List window
 - 30 : Color Adjustment (Hot Key : Ctrl+2)
 - 31 : The numeric buttons are for channel selection(1~9), “-“ and “+” is for channel up and down, and “Memory” button is for saving a channel.



3.1.3 Color Adjustment



- **Default** : Program default value applies if you click the button.

If you click the mouse's right button at the Color Adjustment window, the below submenu will be displayed.



- **Set Default Color Adjustment Components (D)** : To restore default value from a user customized value.
- **Set Current Setting as Default (S)** : To set a default value with a user customized current color adjustment setting.
- **Set Current Setting as Default and all other channels** : To set a default value with a user customized current setting. In addition, it applies to all other channels

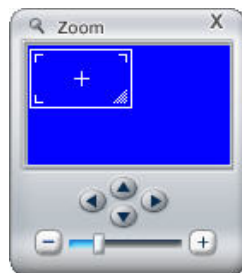
3.1.4 Play List





- **ADD** : To add files into play list.
- **Del** : To delete selected files from play list.
- **Clear** : To delete all files from play list.




3.1.5 Zoom Navigator

While you are watching analog or digital TV, you can zoom-in a certain area of video. If you move your mouse's point on scroll bar, it displays the zoom ratio in percentage (%). The maximum zoom in size is 500%.



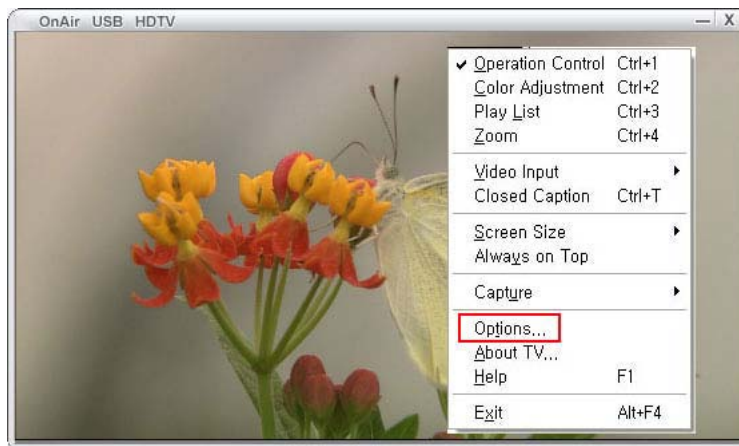
-  Users free to zoom in any area by moving mouse point or dragging down the “-” or “+” button.
-  Enable to move the Zoom area by arrow buttons



-  Zoom-out by 25%
-  Zoom-In ratio bar indicator
-  Zoom-In by 25%

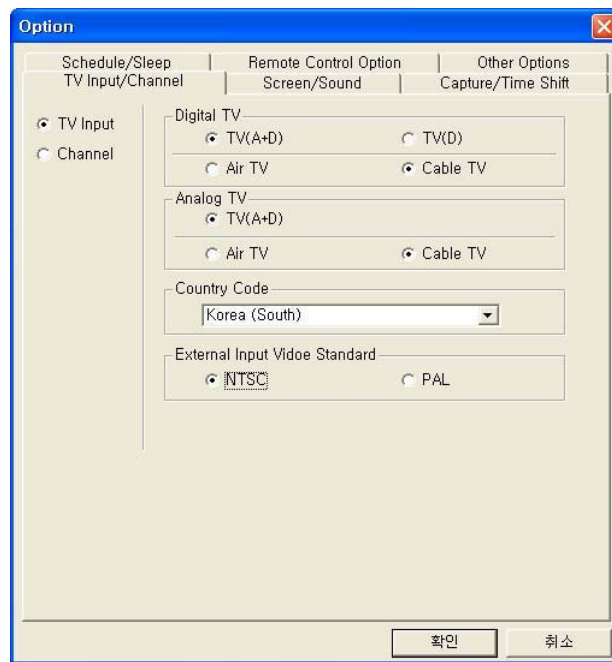
3.2 Option

The Option menu can be selected from sub-menu as below, or selecting it from Operation control window.



3.2.1 Antenna Configuration

TV(D),TV(A+D) To set the proper antenna signal that connected



📺 Digital TV

- **TV(A+D)** : For standard cable TV, choose cable TV option. For using outdoor or indoor terrestrial antenna, choose terrestrial TV option.
- **TV(D)** : Choose this option if you use only digital terrestrial (UHF) TV antenna. **(Important: Please do not connect analog TV antenna.)**

📺 Analog TV

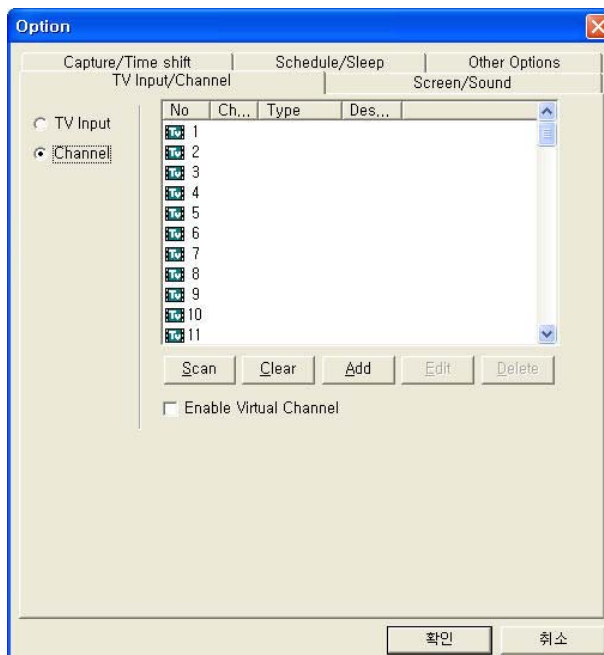
- **TV(A+D)** : Connects the terrestrial TV antenna.
- **Air TV** : To set this when you have outdoor or indoor TV antenna connected.
- **Cable TV** : To set this when you have a general cable TV service.



- ✦ **Country Code** : To set your country code to play Live TV. If you choose a different country code, it may cause abnormal operation.
- ✦ **External Video Input Standard** : Please select proper video input signal format of either NTSC or PAL.

3.2.2 Channel Setup

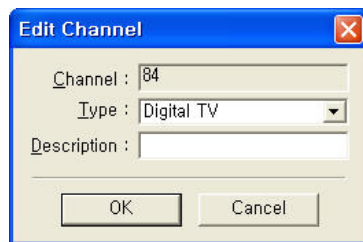
Configuring channels as scanning, clear, add, edit, and delete.



- **Scan** : Automatically scanning the all channels of Digital TV and Analog TV.
- **Clear** : To delete scanned channels from the list.
- **Add** : To add selected channel.



- **Edit** : To edit selected channel information. In description, you can type in the channel information.



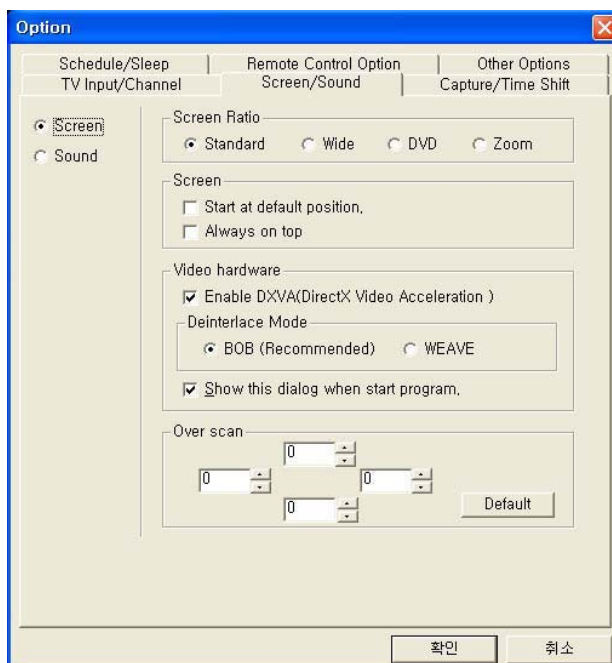
- **Delete** : To delete selected channel.
- **Virtual Channel Preference Mode** : When scanning the channels, it has preference to scan virtual channels and display at first. In addition, if you choose this option, the digital TV channels display as virtual channels. For example, If you watch a channel 9-1 in digital TV mode, you can also watch it in analog TV mode as 9-0.(Same channel number but different TV mode).

If you stop during the channel scanning before it finishes, it saves only scanned channel.



3.2.3 Screen Setup

Configuring the screen size (Standard, Wide, DVD, Pillar) and video acceleration.



Screen Size

- **Standard (4:3)**: TV window displays as standard screen ratio size.
- **Wide (16:9)**: TV window displays as wide screen ratio size.
- **DTV (720x480)**: TV window displays as DVD screen ratio size.
- **Pillar**: TV window displays as expended screen ratio size. When some of digital TV broadcast the converted analog TV sources to digital TV, these digital TV broadcast add the pillars(black bar) to fit in 16:9 wide screen ratio. If you select the pillar screen ratio at this time, you can omit the pillar parts and it fits in 4:3 standard screen ratio.

Screen Position

- **Start at default position** : When the program start, it always start at default position.
- **Always on top** : To set the TV window is always on top. It will prevent to block the TV window when you open the other application windows

Video Hardware

- To set to use video hardware acceleration to minimize the usage of CPU. If you use a video card that not supporting DxVA mode, please disable this option.
- **De-interlaced Mode** : It is recommended to use BOB mode.

Show this dialog when start program

If you select the option of “Show this dialog when start program.”, the following dialog box will appear every time you execute the OnAir USB HDTV program.



The above dialog box displays the system's graphic card information, and you can select the option of “Enable DxVA(DirectX Video Acceleration).”

Over Scan Control

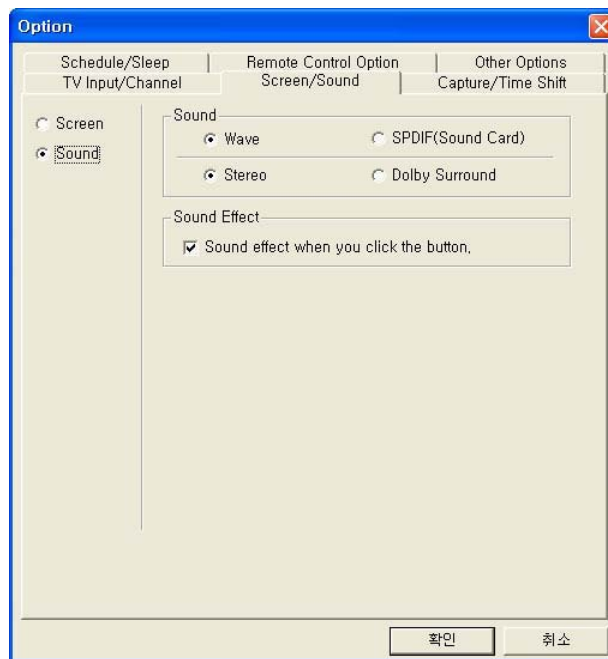
When you watch the digital live TV or analog live TV, the noise may be appeared at the bottom of TV window. The over scan means to display the image by zoom in 1.xx:1 instead of 1:1. Thus, the over scan mode will hide all of noise that appears in TV window.

Enabling DxVA mode is recommended as shown above.



3.2.4 Sound

To configure the audio output and sound effect.



✚ Audio Output

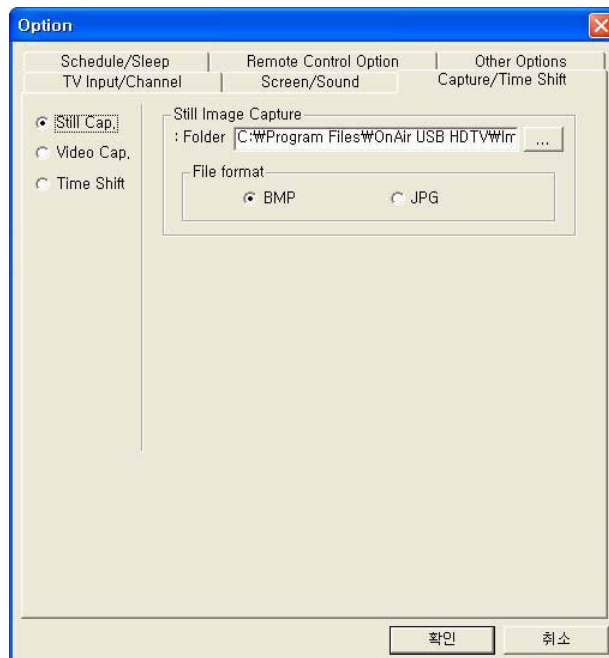
- **WAVE** : To set the audio output as WAVE format.
- **SPDIF (through sound card)** : To set the audio output as SPDIF by transferring the audio to the sound card that supporting the SPDIF output.
- **Stereo** : To set the audio output as Stereo.
- **Dolby Surround** : To set audio output as Dolby Surround. (It supports when the video input is Digital TV.)

✚ Sound Effect

- **Sound effect when you click the button** : To set the sound effect when you click the buttons from TV programs.

3.2.5 Still Capture

To capture a still image into a designation folder location.

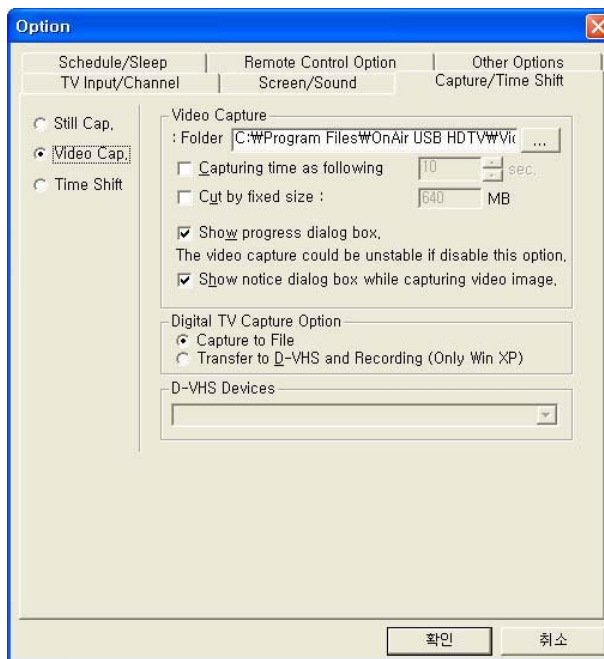


- **Folder** : To set the designation folder to save the image captured files. The default folder is "C:\Program Files\OnAir USB HDTV\Images".
- **File format** : To choose a saving file format of capture image.



3.2.6 Video Capture

To capture video into a designation folder location.



- **Folder** : To set the designation folder to save the video captured files. The default folder is "[C:\Program Files\OnAir USB HDTV\Videos](#)".
- **Capturing time as following** : To capture the video at selected period of time
- **Cut by fixed size** : To capture the Video by fixed size of files. If you disable this option, you can capture the Video without file size limitation as one file. However, if your HDD is FAT32 format, then you are limited to capture the Video at maximum of 4GB. If the captured video is over 4GB size, it will separate the file after exceed the 4GB. If your HDD is NTFS format, then you are limited to capture the Video at maximum of 64GB.
- **Show progress dialog box** : When you capture the Video, the dialog box is displayed at the beginning and the end. **You should disable**

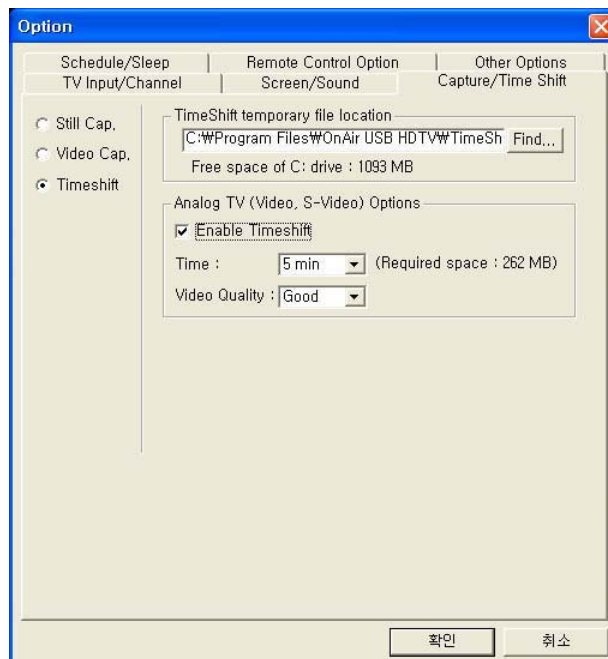
this option when you capture the Video by schedule.

- **Show notice dialog box while capturing video image** : When you capture the Video, the notice dialog is displayed.
- **Digital TV Capture Option** : The “Capture as file” is for saving the HD stream into system’s HDD as a file. The “Transfer to D-VHS and Recording” is for saving the HD stream into the D-VHS. These options are when you saving the HD streams.
- **D-VHS Devices** : It displays the D-VHS that connected with your system. If you have more than one D-VHS devices, please choose a correct D-VHS device that you are willing to save the HD stream into because it displays all D-VHS devices that connected with your system.

The option of “Show notice dialog while capturing video image” is displayed when you enable this option.



3.2.7 Time Shift



- **Folder** : To set the designation folder to save the temporary video captured files. The default folder "[C:\Program Files\OnAir USB HDTV\Time Shifting](#)".
- **Enable Timeshift** : To set the timeshift for analog TV, Video, and S-Video.
- **Time** : To set the period of time to temporary capture the video such as 5Min, 10Min, 30Min, and 60Min. The shown free space is displaying the free space of hard disk that above designation folder located. It displays a required free space of hard disk size depends on the selection of "Analog TV Video Quality" option.
- **Analog TV Video Quality** : You have choice of four selection such as Best, Good, Normal, and Bad. Definitely, it will affect to video quality.

- The Time shift is always enabled when you play Live analog TV. The following table shows the file size of each video quality when you play 1 minute. Please verify your free space of HDD, and set the length of Time shift and its video quality. The following table's data is varied under condition of input signal analog TV or system's environment.

Best	70 MB / 1min
Good	56MB / 1min
Average	41MB / 1min
Minimum	26MB / 1min

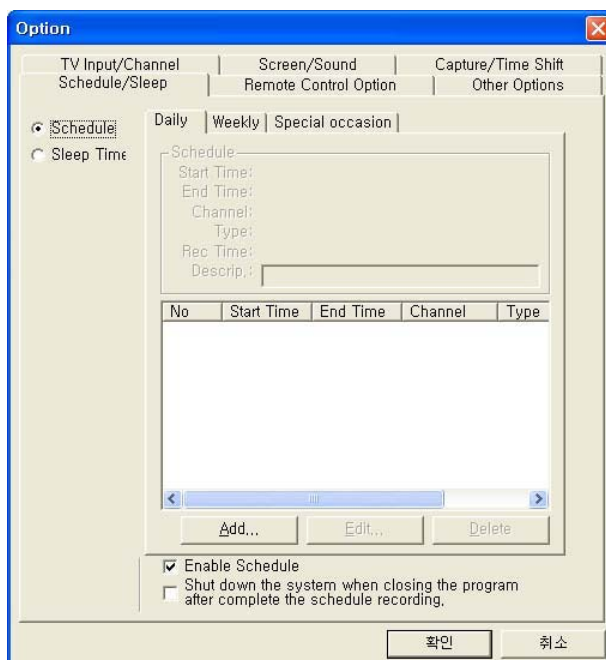
Time Shift is?

While play live analog TV, the time shift offers you ability to pause the live TV for pre-defined period of time. It provides by recording live TV in real time for pre-defined period of time while playing live TV. It helps you to not miss any part of live TV even though you stay away from TV for a while (analog TV only).



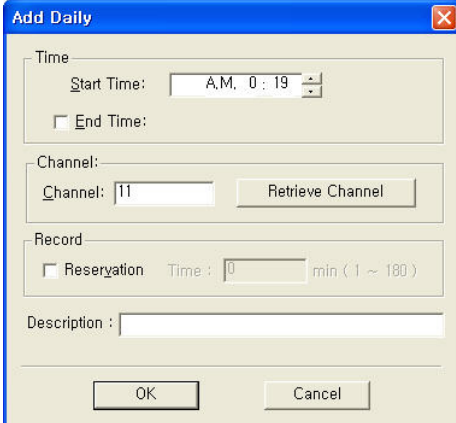
3.2.8 Schedule Recording

Enable to set recording schedule by daily, weekly or special occasion schedule.



Daily Schedule

To record on daily selected time.



The screenshot shows a dialog box titled "Add Daily" with the following fields and controls:

- Time:** "Start Time" is set to "A.M. 0 : 19". There is an unchecked checkbox for "End Time".
- Channel:** "Channel" is set to "11". There is a "Retrieve Channel" button.
- Record:** There is an unchecked checkbox for "Reservation". The "Time" field is set to "0 min (1 ~ 180)".
- Description:** An empty text box.
- Buttons:** "OK" and "Cancel" buttons at the bottom.

- **Start Time** : To set recording schedule start time or scheduled Live TV play start time.
- **End Time** : To set recording schedule end time or scheduled Live TV play end time.
- **Channel** : To set the channels by Input channels number or clicking retrieve channels button.
- **Record** : If you uncheck the record reservation option, the recording is not activated. If you select the record reservation, "record time" will activate. If you set the "Start time" and "End Time", the recording time will automatically set the recording period in between this time interval. The recording period can not be exceeded in between "Start Tim" and "End Tim" interval, and you can set the recording time from at least 1 min to the maximum of 180 mins. Among initializing or completing the recording, it requires about less than 2 seconds. The image and sound may have an interruption among initializing and completing the recording.
- **Description** : To insert the description of recording program information.



Weekly Schedule

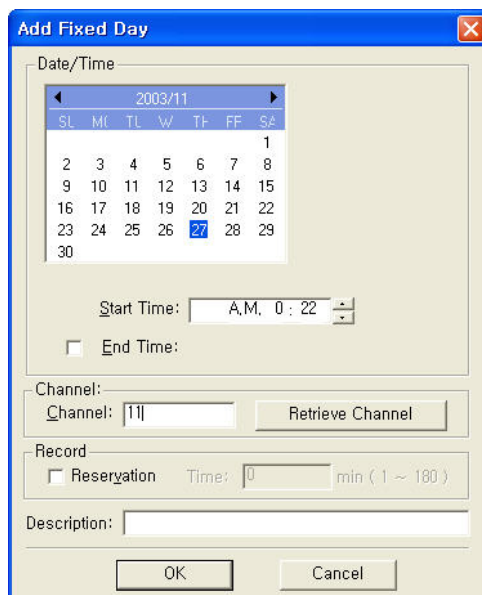
To record on selected day or time by weekly.

- **Day/Time** : To set a day when you record
- **Start Time** : To set recording schedule start time or scheduled Live TV play start time.
- **End Time** : To set recording schedule end time or scheduled Live TV play end time.
- **Channel** : To set the channels by Input channels number or clicking retrieve channels button.
- **Record** : If you uncheck the record reservation option, the recording is not activated. If you select the record reservation, "record time" will activate. If you set the "Start time" and "End Time", the recording time will automatically set the recording period in between this time interval. The recording period can not be exceeded in between "Start Tim" and "End Tim" interval, and you can set the recording time from at least 1 min to the maximum of 180 mins. Among initializing or completing the recording, it requires about less than 2 seconds. The image and sound

- may have an interruption among initializing and completing the recording.
- **Description** : To insert the description of recording program information.

Special Occasion Schedule

To record on special occasion day or time.



Add Fixed Day

Date/Time

2003/11

SL	Mo	Tu	We	Th	Fr	Sa
						1
2	3	4	5	6	7	8
9	10	11	12	13	14	15
16	17	18	19	20	21	22
23	24	25	26	27	28	29
30						

Start Time: A.M. 0 : 22

End Time:

Channel: Channel: 11 Retrieve Channel

Record

Reservation Time: 0 min (1 ~ 180)

Description:

OK Cancel

- **Date / Time** : To set special occasion day.
- **Start Time** : To set recording schedule start time or scheduled Live TV play start time.
- **End Time** : To set recording schedule end time or scheduled Live TV play end time.
- **Channel** : To set the channels by Input channels number or clicking retrieve channels button.
- **Record** : If you uncheck the record reservation option, the recording is not activated. If you select the record reservation, "record time" will activate. If you set the "Start time" and "End Time", the recording time will automatically set the recording period in between this time interval.



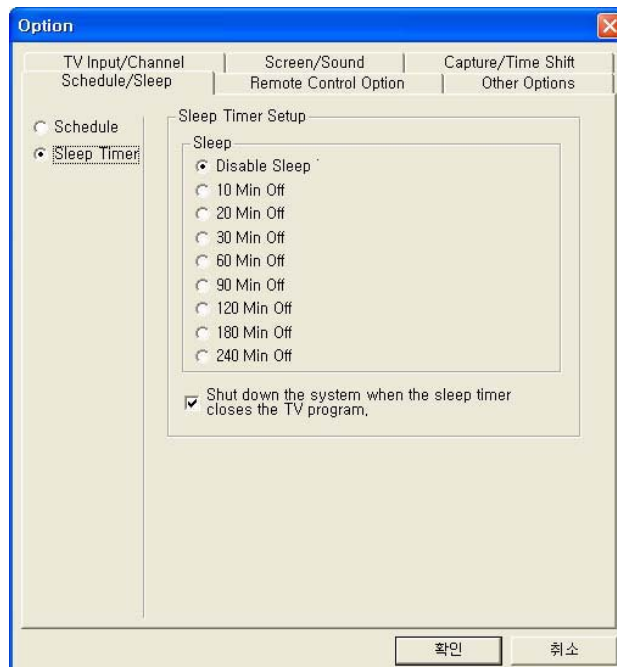
The recording period can not be exceeded in between “Start Tim” and “End Tim” interval, and you can set the recording time from at least 1 min to the maximum of 180 mins. Among initializing or completing the recording, it requires about less than 2 seconds. The image and sound may have an interruption among initializing and completing the recording.

- **Description** : To insert the description of recording program information.
- **Enable Schedule** : It is required to check the enable schedule to activate your pre-defined schedule playing or recording. If you uncheck it, then it does not activate. There are two schedule options such as schedule playing and schedule recording.
- **Shut down the system when you closing the program after complete schedule recording** : If the schedule recording is completed, then system shut down when it closes the program. However, it requires to set the end time.

When you activate the schedule feature, the TV may stop temporary.

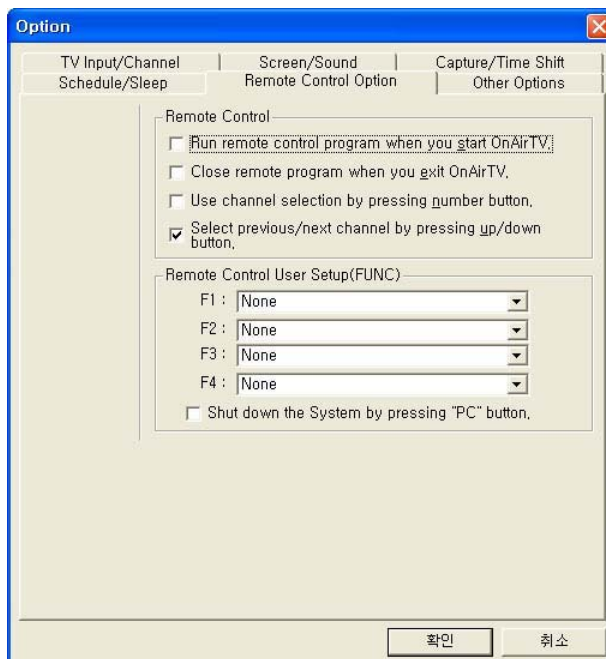
3.2.9 Sleep Timer Setup

The sleep timer set a time for automatically closing the TV program after a certain period of time. If you enable the check box of “Shut down the system when the sleep timer closes the TV program”, the system will shut down simultaneously when TV program closes.



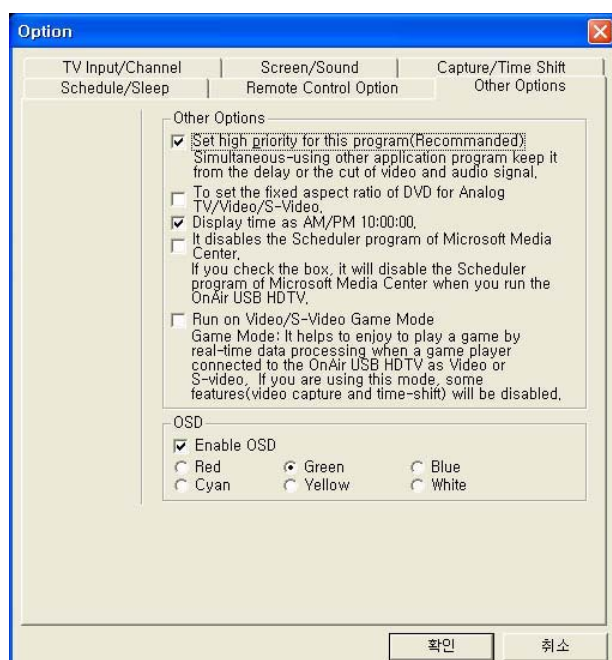


3.2.10 Remote Controller



- **Run remote control program when you start OnAir TV** : It starts the remote control program when the TV program activates.
- **Close remote program when you exit OnAir TV** : It closes the remote control program when the TV program closes.
- **Use channel selection by pressing numeric buttons** : To set the remote controller's number buttons to select the saved channels.
- **Select previous/next channel by pressing up/down buttons** : To set the remote controller's channel button to select the channels by pressing the buttons to choose previous channel or next channel.
- **Remote Control User Setup (FUNC)** : To set the customizable buttons of F1~F4.
- **Shut Down System by "PC" button** : If you choose this option, the system will shut down by pressing the "PC" button from the remote controller.

3.2.11 Other Options

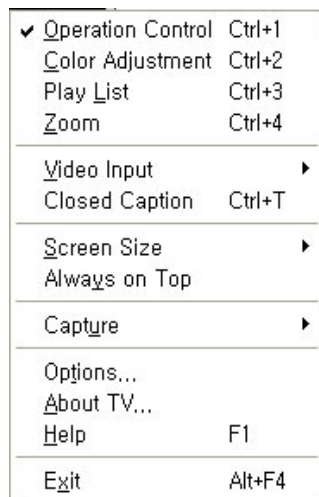


- **Set high priority for this program** : When you use other application programs simultaneously while using OnAir USB HDTV, it may cause a problem of mis-sync or frame loss. It is recommended to avoid those problems
- **To set the fixed aspect ratio of DVD for Analog TV/Video/S-Video** : To set the analog TV, Video, and S-Video as fixed DVD screen aspect ratio of 720x480. If you enable this option, the screen aspect ratio is not changed in operation control window. Moreover, option → Screen / Sound → Screen → Screen Ratio is not applicable.
- **Display time as AM/PM 10:00:00** : To set display time format on operation control window.
- **Disable the Scheduler program of Microsoft Media Center** : OnAir USB HDTV supports Microsoft Media Center. It will disable the Scheduler program of Microsoft Media Center when you run the OnAir



USB HDTV.

- **Run On Vide/S-Video Game Mode** : OnAir USB HDTV displays the analog TV, Video, and S-Video by after hardware MPEG2 video encoding , and then decoding. Because of this procedure, the video displays in about 1 sec delay. Therefore, you may have a difficulty to play the game when you input the game device into Video or S-Video because of display delay time. This feature will help to enjoy the game by handling the data in real-time. If you are using the game mode, some features such as video capture and timeshift will be disabled. If you select either input of Video or S-Video with the Game mode, the following sub-menu will be shown by clicking the mouse's right button from the TV screen. The De-interlaced mode is added into sub-menu. For the fast movement display such as game play, it is recommend to activate the de-interlace mode.



- **Enable OSD** : To set the on screen display color of TV window such as volume, channel, and option.

4 FAQ

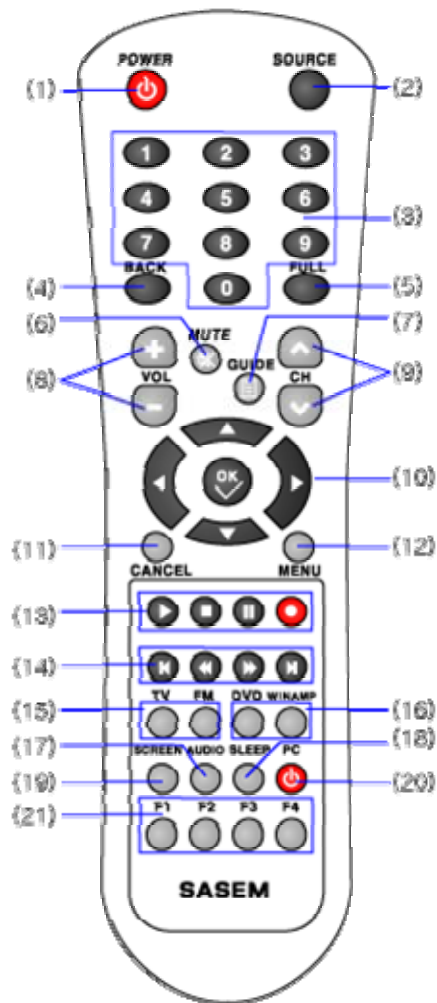
4.1 How to use Hot Keys

Hot Keys	Functions
Ctrl + 1	Operation Cotrol Window
Ctrl + 2	Color Adjustment Window
Ctrl + 3	Play list window
Ctrl + 4	Zoom Navigator
Tab	TV source selection (Digital TV ↔ Analog TV)
PgDown	Video Input selection (Digital TV, Analog TV, Video, S-Video)
Ctrl + Enter	Full screen view
Ctrl + D	Desktop View
Ctrl + J	Standard (Aspect Ratio)
Ctrl + K	Wide (Aspect Ratio)
Ctrl + L	Pillar (Aspect Ratio)
Ctrl + H	DVD (Aspect Ratio)
PgUp	Screen size (Small, Medium, Full Screen)
↑	Saved next channel
↓	Saved previous channel
+	1Channel up
-	1Channel down
→	Volume Up
←	Volume down
Home	Previous channel
End	Mute









Hot Keys	Functions
Space	Still Image Capture
Ctrl + R	Video Capture
Ctrl + C	Still image copy
ESC	Stop video capture
Ctrl + T	Closed caption (in case the analog TV, Video, and S-Video support closed caption)
Ctrl + G	De-interlaced Mode (this option available in game mode only)
Ctrl + Z	Sleep
Ctrl + N	Current status information
D-VHS Play	
Ctrl + V	D-VHS Play
Ctrl + R	Record
ESC	Close
F1	Help
Alt+F4	Close TV program

4.2 Remote Controller Button Description





Item	Functions
(1) POWER	TV
(2) SOURCE	Digital TV / Analog TV / Video / S-Video
(3) Numeric Button	Direct channel number input
(4) BACK	Previous channel
(5) FULL	Full screen
(6) MUTE	Mute
(7) GUIDE	Will be supported later program update (EPG).
(8) VOL +/-	Volume Control
(9) CH ^/∇	Channel Control
(10) Arrow Keys	Left, Right, Up, Down (Will be supported) / Confirm button (OK)
(11) CANCEL	Cancel
(12) MENU	Will be supported later program update.
(13)	 File play / Stop
	 Pause
	 Video Capture
(14)	 Previous / Next button of file selection for file play
	 For file play, Rewind / FF
(15)	TV When File play for Trp, it changes to TV mode
	FM Not Available
(16) DVD/WINAMP	Not Available
(17) AUDIO	Stereo / Dolby Surround
(18) SLEEP	Sleep button
(19) SCREEN	Standard, Wide, Expanded, DVD
(20) 	Based on configuration, it turn offs the PC power
(21) FUNC	Customizable Keys of F1/F2/F3/F4 that configured from Option

FCC Information

This device complies with Part 15 of the FCC Rules. Operation is subject to the following two conditions:

- (1) This Device may not cause harmful interface, and
- (2) This device must accept any interference received, including interference that may cause undesired operation.

Note: This equipment has been tested and found to comply with the limits for CLASS B digital device, pursuant to Part 15 of FCC Rules. These limits are designed to provide reasonable protection against harmful interference when the equipment is operated in a commercial environment. This equipment generates, uses and can radiate radio frequency energy and, if not installed and used in accordance with the instructions, may cause harmful interference to radio communications. However, there is no guarantee that interference will not occur in a particular installation. If this equipment does cause harmful interference to radio or television reception, which can be determined by turning the equipment off and on, the user is encouraged to try correct the interference by one or more of the following measures:

- 1.1. Reorient or relocate the receiving antenna.
- 1.2. Increase the separation between the equipment and receiver.
- 1.3. Connect the equipment into an outlet on a circuit different from that to which receiver is connected.
- 1.4. Consult the dealer or experienced radio/TV technician for help.

WARNING

Changes or modifications not expressly approved by the manufacturer could void the user's authority to operate the equipment.