

ONAIR USB HDTV

GT

User's Manual

 **onair solution**

This user manual describes how to use USB HDTV GT

This product supports Dolby Digital System.

This product was made under the license of Dolby Laboratories.

"Dolby", "Pro Logic" and Double D is the trademark of Dolby Laboratories.

If you have any difficulties to use the products or have any questions, please contact our technical support for service assistance

Tel : 82-1588-6778

Fax : 82-2-703-8151

URL : www.onairsolution.co.kr

E-mail : supports@onairsolution.co.kr

Technical Support Office Hour

Mon-Fri : 10:00 AM - 17:00 PM

2nd, 4th Sat : 10:00 AM -15:00 PM

The office is closed on every 1st, 3rd, 5th Saturday or Holidays.

Copyrights

Each of the companies involved in this manual copyrights the software and the firmware in this. Every software and firmware is protected under the intellectual property right, treaty, computer program preservation, copyright law and international copyright convention. You cannot copy and excerpt this manual without permission.

Warranty

We warrant our products for a period of one year from the date of purchase

This device is already registered on Electro – Magnetic Compatibility.

OnAir USB HDTV GT is available everywhere.

Copyright © 2005 OnAirSolution Co., Ltd. All Right Reserved.

Made in Korea

FCC Information

This device complies with Part 15 of the FCC Rules. Operation is subject to the following two conditions:

- (1) This Device may not cause harmful interference, and
- (2) This device must accept any interference received, including interference that may cause undesired operation.

Note: This equipment has been tested and found to comply with the limits for CLASS B digital device, pursuant to Part 15 of FCC Rules. These limits are designed to provide reasonable protection against harmful interference when the equipment is operated in a commercial environment. This equipment generates, uses and can radiate radio frequency energy and, if not installed and used in accordance with the instructions, may cause harmful interference to radio communications. However, there is no guarantee that interference will not occur in a particular installation. If this equipment does cause harmful interference to radio or television reception, which can be determined by turning the equipment off and on, the user is encouraged to try correct the interference by one or more of the following measures:

- 1.1. Reorient or relocate the receiving antenna.
- 1.2. Increase the separation between the equipment and receiver.
- 1.3. Connect the equipment into an outlet on a circuit different from that to which receiver is connected.
- 1.4. Consult the dealer or experienced radio/TV technician for help.

WARNING

Changes or modifications not expressly approved by the manufacturer could void the user's authority to operate the equipment.

Important Safety Notice

Warning (Always comply with these instructions to prevent the risk of injuries and the damage of your system.) It is strongly recommend you to read the user's manual before you use the product. It is strongly recommended that you carefully read this manual before using your product.

*There are two warning symbols - warning and notice. Please refer to the following definition of "warning" and "notice"



Intended to alert the user to the possible serious injury or death by your violation of the instruction

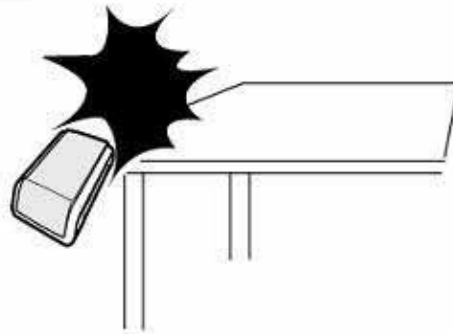


Intended to alert the user to the possible minor injury or product damage by your violation of the instruction



Caution to be secured against a specific condition.

The damage due to the user's carelessness will charge the user for technical support.





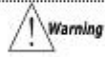
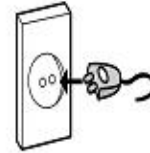
Warning
An abnormal power cable, plug, and outlet may cause electric shock or fire.



Warning
Do not pull the plug by forcing it in. Do not touch a plug and an outlet with a wet hand which may cause electric shock or fire.



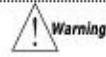
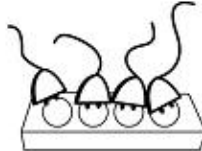
Warning
Please insert plug fully into the outlet. Loose connection may cause fire.



Warning
Do not bend the power cable excessively or get it squeezed by the heavy things, which may cause electric shock or fire.



Notice
Do not overload the outlet. Do not connect the additional outlet on the main outlet, which may cause electric shock or fire.



Warning
Do not put any tablecloth in the ventilation holes for better ventilation. It may result in fire through increasing the inner temperature.





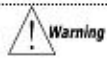
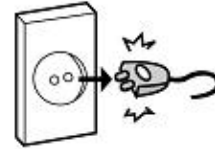
Please install this device on the flat place. Overturned product may cause mechanical trouble or injury.



Don't install this device beside radiating objects such as candles, mosquito coils, and cigarettes which may cause fire.



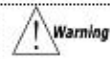
Be sure to unplug when cleaning the device. It may result in electric shock or fire.



Don't use this device near the combustibles and the inflammables which may cause fire or explosion.



Please be aware of rain infiltration into the house when using an exterior antenna.



Please install antenna far away from the high-tension cable or communication cable. If not, it may cause electric shock or fire.





Don't insert chopsticks, wires, and gimlets into a ventilation opening, A/, or ANT terminals. This may cause electric shock or fire.



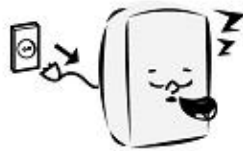
Keep the device out of children's reach. This may cause electric shock.



Never open, repair and modify this device arbitrarily. This may cause electric shock and fire. For after-sales service, please call technical support.



Unplug when unused for long periods of time. This may cause electric shock or fire.



When the device emits smoke and bad odor, please unplug immediately. Then give a call to technical support. This may cause electric shock or fire.



When cleaning this device, first unplug and remove the dirt with cotton or cotton flannel. Do not clean this device with chemicals or water.

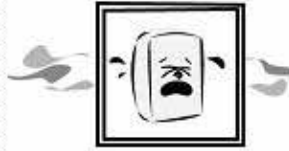




Do not clean this device with water. This may cause electric shock or fire.



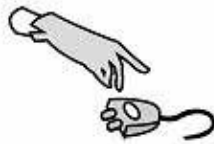
Do not install this device at wet place. This may cause electric shock or fire.



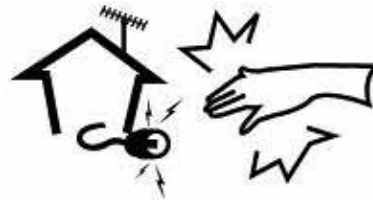
In case of lightning, please unplug and remove the antenna cable. This may cause electric shock or fire.



Clean dirt and water on the plug before using this device. This may cause the electric shock or the fire.



There is electricity turning on the antenna. So when connecting the antenna lines, the user should wear protective gears such as rubber gloves.



Contents

1. Introduction of OnAir USB HDTV GT	12
1.1 Main Specifications and Features	12
1.3 System Requirements.....	14
1.4 Parts Details.....	16
2 Installation	17
2.1 Installation Checklist	17
2.1.1 Windows XP Service Pack 1 or higher.....	17
2.1.2 USB2.0 Patch (Hot Fix)	17
2.2 Hardware Installation.....	18
2.3 OnAir USB HDTV GT Device Driver Installation.....	19
2.3.1 Driver Installation.....	19
2.4 OnAir USB HDTV GT Application Software Installation.....	22
3. How to use OnAir USB HDTV GT	26
3.1 Screen Components	26
3.1.1 TV Window	27
3.1.2 Operation Control Window and Channel Window .	27
3.1.3 Button description on Operation Control Window	
and Channel Window	28
3.1.4 Color Adjustment.....	30
3.1.5 Play List.....	31
3.1.6 Zoom Navigator	32

3.2 Option.....	33
3.2.1 Antenna setting.....	34
3.2.2 Channel Setup	36
3.2.3 Screen Setup	39
3.2.4 Sound	43
3.2.5 Still Capture.....	50
3.2.6 Video capture.....	51
3.2.7 How to use D-VHS device	55
3.2.8 How to use OnAir USB TV GT in playing DTV ...	56
3.2.9 How to use OnAir USB TV GT in playing [File]....	57
3.2.10 How to use OnAir USB TV GT in playing D-VHS	58
3.2.11 Time Shift	59
3.2.12 Scheduled Recording.....	61
3.2.13 Daily Schedule.....	62
3.2.14 Weekly Scheduling	64
3.2.15 Occasional Scheduling	66
3.2.16 Sleep Timer Setup	68
3.2.17 Remote Controller.....	69
3.2.18 Other Options.....	71
3.2.19 How to use Hot key.....	75
3.2.20 Remote control button description.....	77
4 FAQ	79

1. Introduction of OnAir USB HDTV GT

1.1 Main Specifications and Features

The followings are the main specifications and features of OnAir USB HDTV

- ✦ Digital TV/Cable Digital TV (QAM) / Analog TV
 - ◆ Full HDTV of 1920 X 1080 (ATSC)
 - ◆ ATSC / NTSC TV
 - ◆ AC3 Audio Decoding and output
 - ◆ Dolby Digital 5.1 Channel decoding and output (Digital TV)
 - ◆ Auto Power On/Off
- ✦ Recording & Playback
 - ◆ EPG (Electronic Program Guide) supports on Digital TV
 - ◆ Scheduled recording by EPG
 - ◆ Real time recording on Digital / Analog TV
 - ◆ Real time or Scheduled Recording in Digital / Analog TV
 - ◆ Still Capture in Analog TV (JPEG or BMP File)
 - ◆ Software MPEG2 Type Encoding for Analog Video Source (easy to create your own DVD title via DVD/RW and other tools): Resolution 720 x 480, Encoding supports with the format of 640x480, 480x480, 352x480, and MPEG1 Type Encoding supports with the format of 352x240.
 - ◆ Recording in the time-shifting (Digital TV)
 - ◆ Recording support in the file playback (The user can re-record the part that he/she wants)
 - ◆ HD Stream File format (ATSC) Playback
 - ◆ Random and backward playback of analog TV files (MPEG1/MPEG2 DVD Stream)
 - ◆ Playback of HD Stream files (Random access)
 - ◆ Time-shifting support in Digital TV
 - ◆ D-VHS HD Stream playback or real-time recording (Win XP only)

- ✦ Various External A/V Input & Output Supports
 - ◆ External A/V Input supports (Video, Stereo Audio, S-Video, NTSC/PAL Video)
 - ◆ SPDIF Output supports through sound card
 - ◆ External AAC Decoder support
 - ◆ External Special Effect support
 - ◆ Special Effect support(Reverse Color Converting)
 - ◆ Analog 5.1 channel output supports through sound card(Digital TV)
- ✦ Bundled WinDVD Creator 2
 - ◆ One user-friendly interface for Capture, Edit, Author, & Burn.
 - ◆ Direct Recording: From video to disc without the wait
 - ◆ UniPass: Video editing and creation combined in one quick step
 - ◆ Support for all DVD and CDR formats
- ✦ User-Friendly Feature
 - ◆ Remote control
 - ◆ Zoom-In
 - ◆ Digital Signal Strength Display
 - ◆ Wallpaper-like Screen Image (Captured Images like those of desktop computer)
 - ◆ Sleep timer
- ✦ ***What is Time-Shift?**

While playing live Digital TV, the user can pause the live TV for pre-defined periods of time by Time-Shift. In real-time for pre-defined period of time while playing Live TV, users can record live TV by Time-Shift. It helps you not to miss any part of Live TV even while you stay away from the TV for a moment.

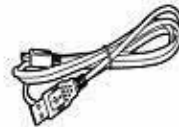
1.2 Package Contents



1. OnAir HDTV GT



2. Bar Type Antenna



3. Mini USB Cable



4. Installation CD



5. User's Manual



6. RF Adapter



7. Remote controller



8. AV Input Cable

If any of the above items is missing, please contact our technical support at 82-1588-6778.

1.3 System Requirements

- ◆ USB 2.0 port supported Desktop or Laptop PC(PCI / PCMCIA types of USB2.0)
- ◆ OS: MS Windows XP Service Pack 1 or higher version, MS Windows XP Media Center Edition (MCE 1.x), higher version of Windows 2000 Service pack 4
- ◆ Higher version of DirectX 9.0

Minimum system requirement

VGA	ATI	nVidia
	RADEON 7200 or higher Mobility Radeon 7500 or higher	Geforce MX 440 or higher Geforce 4 Go or higher (No support of Geforce 4Ti)
	Video Memory 32MB or higher	
CPU	PentiumIII 800 Mhz or above / AMD Athlon XP or higher	
Mem	128MB (256MB Recommended)	

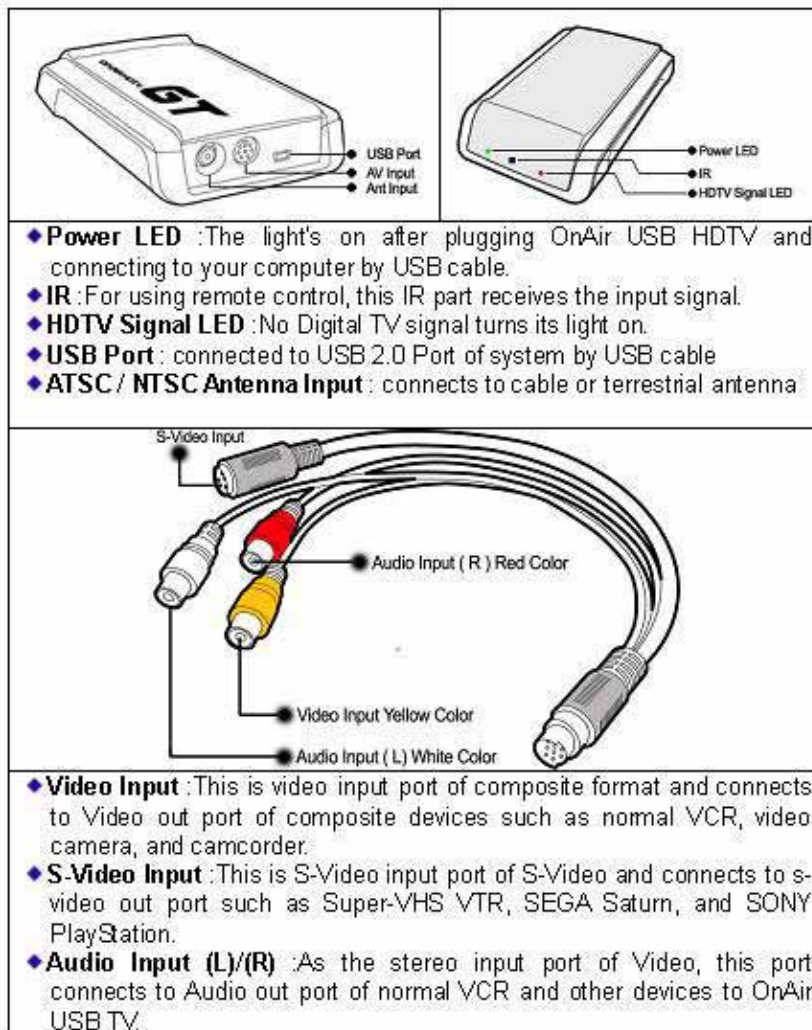
List of supported VGA

ATI	nVidia
Desk Top PC	Desk Top PC
Radeon7200,7500,8500,9100,9000, 9200,9500,9700,9550,9600,9800, X800,X700,X600,X300,9100 IGP	Geforce4 MX:420,440,460, 4000, GeforceFX 5200,5300,5600,5700, 5750,5800,5900,6200,6600,6800
Mobile PC	Mobile PC
Mobility Radeon7500,9000,9600, 9700,9800,X200,X600,X700	Geforce 4 GO 420,440,460 Geforce FX GO 5100,5200,5600, 5650,5700,6200,6600,6800 Go

Minimum system requirement(Not supporting DXVA)

- ◆ VGA :AGP4X with 32MB video memory or higher (64MB or higher is recommended)
- ◆ CPU:Pentium 4 1.6GHz or higher / AMD Athlon XP 2000+ or higher is required
- ◆ Memory: 128MB (256MB Recommended)

1.4 Parts Details



2 Installation

2.1 Installation Checklist

Please read the installation guide at www.onairsolution.co.kr first, and then install this device in your pc.

2.1.1 Windows XP Service Pack 1 or higher

First, right-click on the mouse to open the "Properties" from the desktop menu of "My Computer", then check out if the current operating system is Microsoft Windows XP Service Pack 1 or 2. If "Microsoft Windows XP Service Pack 1" is not installed in your operation system, then please download and install the "Service Pack 1" from the Windows Update on line. In case of Windows Service pack 2, you don't have to update.

Please open Microsoft Internet Explorer, and choose the tool menu on the top of menu bar and click the "windows update" and run the update scan. If the update scan is completed, there will be update scan result displayed. From the update scan result list, please download the Microsoft Windows XP Service Pack 1 from "Critical Updates and Service Pack" and install it.

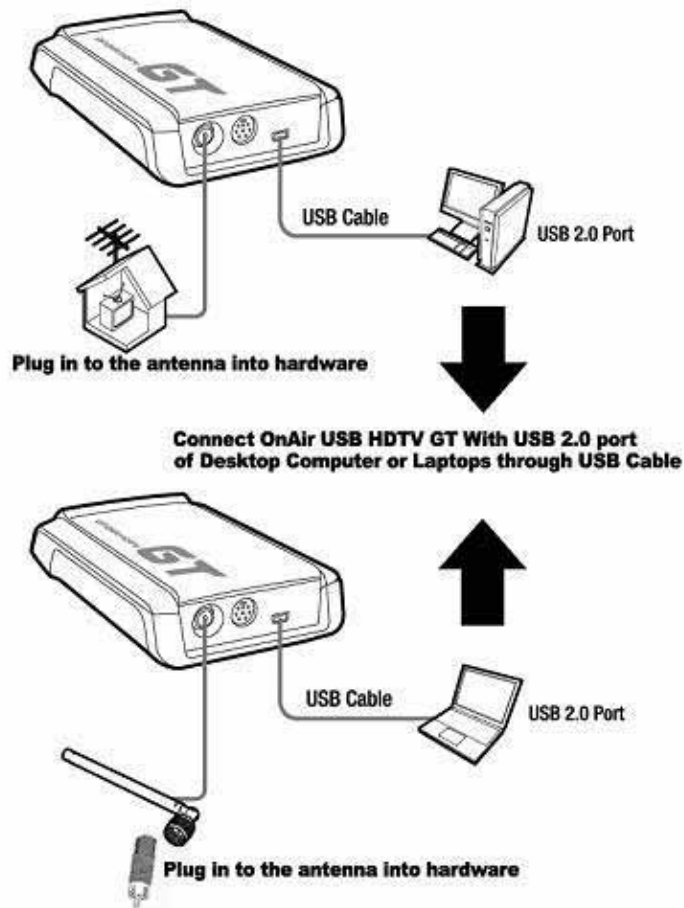
2.1.2 USB2.0 Patch (Hot Fix)

Because the USB 2.0 is a new device, even Microsoft Windows XP Service Pack 1 has the USB 2.0 Device Driver bug. For the users of Service Pack 2, no additional patch is necessary.

At first, please confirm if the "Windows XP Hot Fix - KB822603" is installed on your system from the "program add / remove" under control panel. If your system has already installed this, your system had completed the patch of USB2.0 Device Driver Bug. If your system has not installed this, please open Microsoft Internet Explorer, and choose the tool menu on the top of menu bar and click the "windows update" and run the update scan. If the update scan is completed, there will be a list of update scan result displayed. From the list of update scan result, please find the recommended "Windows XP SP1 update (KB822603)" under Windows XP menu and install it on your system. This Hot Fix patch program is released by Microsoft to fix a failure to recognizing USB 2.0 device.

2.2 Hardware Installation

OnAir USB HDTV GT is an external HDTV device that can be connected with personal computer or laptop through USB2.0 port. Please plug in the supplied power adaptor into the hardware, and connect OnAir USB HDTV with USB2.0 port of desktop or laptop computers through USB cable.



2.3 OnAir USB HDTV GT Device Driver Installation

Please insert the provided installation CD into your system's CD-ROM drive. The installation CD will automatically start the installation. From the displayed product list, select the driver installation under Onair USB HDTV and install Drive as follows. If the installation CD does not auto-run and display the product list, please run "Installer.exe" file on your CD-ROM through "Window Explorer"

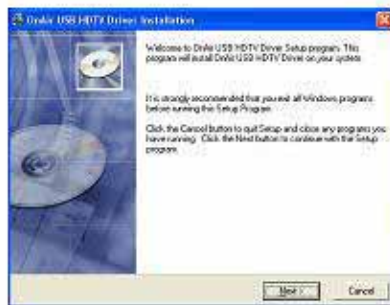
2.3.1 Driver Installation



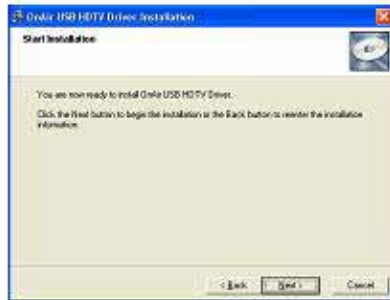
1. This window is for the user to select the language of the system. If selected "English", the driver installation system menu displays in English. Please click [OK] after selecting "English".



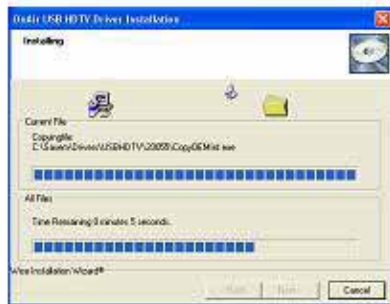
2. This window notice displays when OnAir USB HDTV is already connected with the system before driver installation, which means the user will be able to install the driver for USB HDTV. Finally, if OnAir USB HDTV is connected with system, please disconnect this device from USB port



3. Close windows program and press [Next] for further installation.



4. If the preparation for installation is ready, please click [Next] to proceed with the installation.



5. Then driver installation is finished. Press [OK] and connect OnAir USB TV with the system.



6. You should proceed with the installation by clicking the "Continue Anyway" option. Installing the driver will not affect the performance of your computer. Generally, this message is received during the installation into a Windows XP or Windows 2000 environment. Again, proceed with the installation by selecting the Continue Anyway option



7. It has been ready to install Onair USB HDTV Driver on your system. After you have clicked the Finish button to finish Setup.

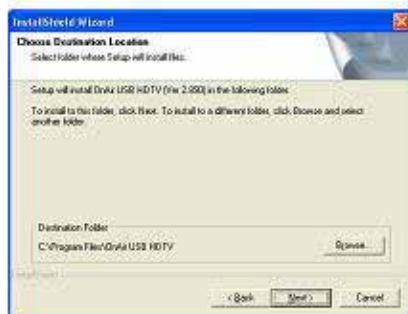
2.4 OnAir USB HDTV GT Application Software Installation

The OnAir USB HDTV GT application software installation is provided in given CD ROM.

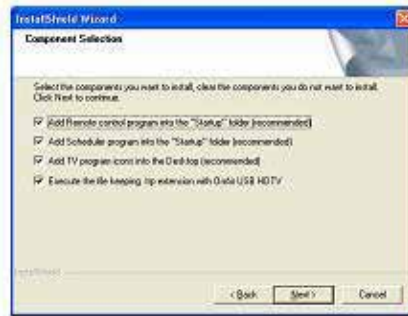
Please insert the provided installation CD into your system's CD-ROM drive. The installation CD will automatically start the installation. From the displayed product list, please select the application software under OnAir USB HDTV. . If the installation CD does not auto-run and display the product list, please run "Installer.exe" file on your CD-ROM by "Window Explorer"



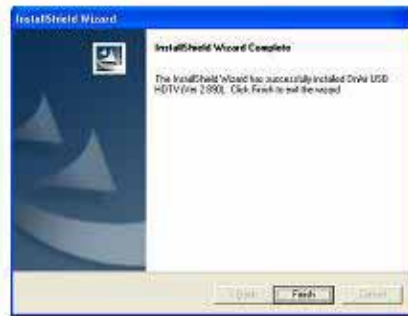
1. It will start the installation program of OnAir USB HDTV application software



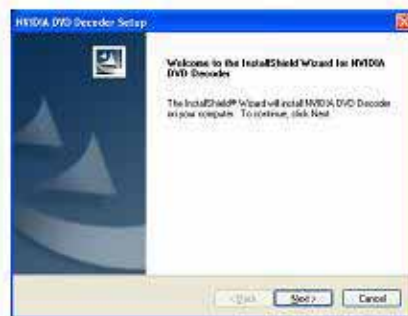
2. Please select the folder that program will be installed. If you would like to select the other folder, please press [Browse] button. To install program at selected folder, please press [Next] for installation.



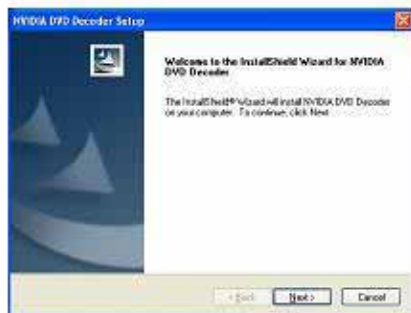
3. User can select software items to be installed. It is recommended to install software items. For next step, please press [Next].



4. InstallShield Wizard finished the installation of application software for "OnAir USB HDTV".



5. The InstallShield Wizard starts, and directs you through the rest of the installation process as described below.



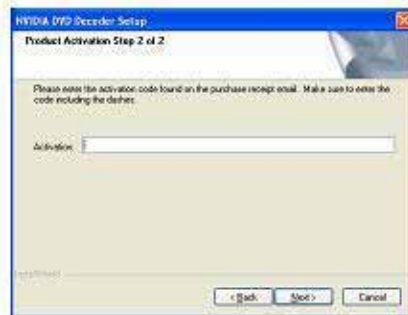
6. At the Welcome Window, click **Next**.



7. Read the license agreement, then click Yes if you agree to the terms.



8. At the Product Activation screen, step 1 of 2, enter the required information, then click **Next**.

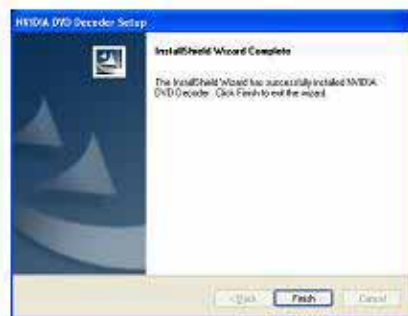


- 9. At the Product Activation screen, step 2 of 2, enter the activation code, then click **Next**



- 10. At the Choose Destination window, browse to locate the folder where you want the NVIDIA DVD Decoder files installed, or just use the default location and click **Next**.

Setup proceeds to install the files



- 11. At the InstallShield Wizard Complete Window, click **Finish**

3. How to use OnAir USB HDTV GT

3.1 Screen Components

[TV Window]



[DTV Operation Control Window]

[Channel Window]



[ATV Operation Control Window]

[Channel Window]



[Color Adjustment]



[Play List]



[Zoom Navigator]



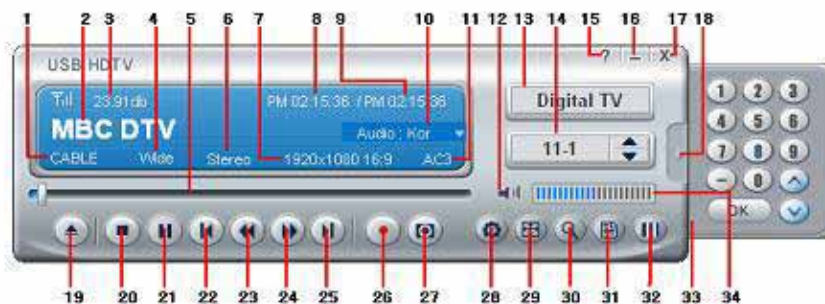
3.1.1 TV Window

It displays a video source input such as Digital TV, Analog TV, Video, and S-Video.

- ◆ Hide: It hides the TV window without closing the TV program.
- ◆ Close: It closes the TV program.

Right-click on the mouse for the TV window will display the following submenu.

3.1.2 Operation Control Window and Channel Window



3.1.3 Button description on Operation Control Window and Channel Window

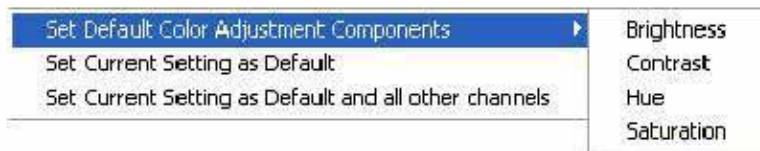
- ◆ 1: Display current Antenna source
- ◆ 2: Display Channel Number
- ◆ 3: Display DTV Signal Strength
- ◆ 4: Display current Aspect Ratio of TV window
- ◆ 5: Display position status bar in file playback or time-shift
- ◆ 6: Display current Audio Output
- ◆ 7: Display resolution and current Aspect Ratio of Video source
- ◆ 8: Display current Computer System Time
- ◆ 9: Display current time of TV by time-shift
- ◆ 10: Display DTV audio channel and select audio channel. On the displayed list, user can change the audio channel selection with a mouse-click. If not multi audio channel, the displayed list will not be activated.
- ◆ 11: Display audio format of video source
- ◆ 12: Mute
- ◆ 13: Selection of video input
- ◆ 14: Display and select a registered channel number. The saved channels are changed by ▲ or ▼.
- ◆ 15: Help
- ◆ 16: Hide TV window
- ◆ 17: Hide operation window (hotkey: Ctrl + 1)
- ◆ 18: Display or hide channel window
- ◆ 19: Open file
- ◆ 20: Stop
- ◆ 21: Pause (In activating the Time shift, it pauses or play by toggling.)
- ◆ 22: Previous(In activating the Time shift, it moves to the beginning position.)
- ◆ 23: Moves backward (In activating the Time shift, it moves back to a certain previous record position)
- ◆ 24: Moves forward (In activating the Time shift, it moves back to a certain time period of next record position)
- ◆ 25: Next (In activating the Time shift, it moves to Live mode)
- ◆ 26: Video Capture
- ◆ 27: Still Capture
- ◆ 28: Option
- ◆ 29: Aspect Ratio

- ◆ 30: Zoom (Zoom Navigator)
- ◆ 31: Play List window
- ◆ 32: Color Adjustment (Hot Key: Ctrl+2)
- ◆ 33: The numeric buttons select channels (1~9), "?" is for turning one channel down, "+" for turning one channel up, and "OK" button for saving a channel.
- ◆ 34: Volume adjustment

3.1.4 Color Adjustment



- ◆ Default: Click of the button restores program default value.
- ◆ Right-click on the mouse for the Color Adjustment window will display the following submenu.



- ◆ Set Default Color Adjustment Components (D): To restore default value from a user customized value.
- ◆ Set Current Setting as Default (S): To set a default value to the current customized user color setting. Then in restoring the default value, this time registered value should be default.
- ◆ Set Current Setting as Default and all other channels: To set a default value to the current customized user settings. In addition, it applies to all other channels.


3.1.5 Play List

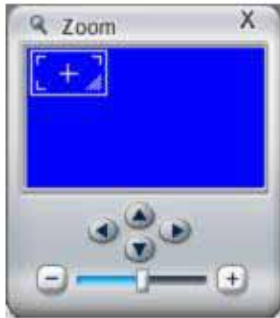
In file playback, the user can register and use the specific files. In the playback list, the user can add and use MPEG1, 2 and MPEG2 TS (.trp/tp/tps)








- ◆ ADD: To add files into play list.
- ◆ Delete: To delete selected files from play list.
- ◆ Clear All: To delete all files from play list.

3.1.6 Zoom Navigator

User can zoom in a certain position of the video while playing TV. The zoom-in range is from default TV window (100%) to a maximum of five times as large as the current TV view (500%). Also,  moving the scroll bar displays the zoom ratio in percentage.



-  User can move and zoom the specific part of the screen arbitrarily. Also, by dragging the mouse, user can set the zoom ratio.
-  Moves zoom-in position left, right, above and below.
-  Zoom out by 25% per click (-)
-  Zoom in or return to the original screen size
-  Zoom in by 25% per click (+)