

### 3.2 Option

User can select the Option menu on the sub-menu by right click on mouse as shown below [picture 1] or click the option menu bar in the Operation control window as shown below [picture 2].



[Picture 1]

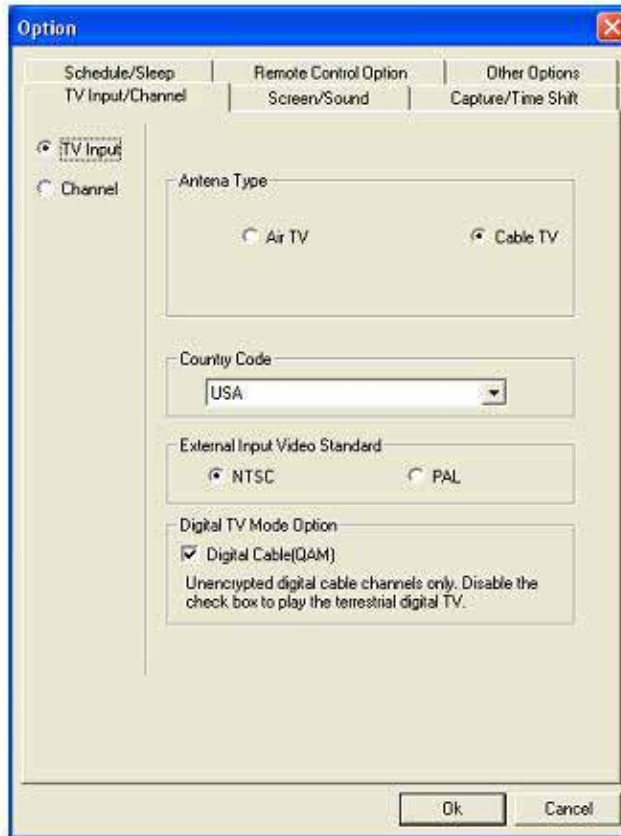


[Picture 2]

To use this product without a hitch, users are recommended to select the proper value for the system.

### 3.2.1 Antenna setting

Users can set the proper antenna signal for connection.



✚ Digital TV

- ◆ TV (A+D): For standard cable TV, choose cable TV option. For using outdoor or indoor terrestrial antenna, choose terrestrial TV option.

✚ Analog TV

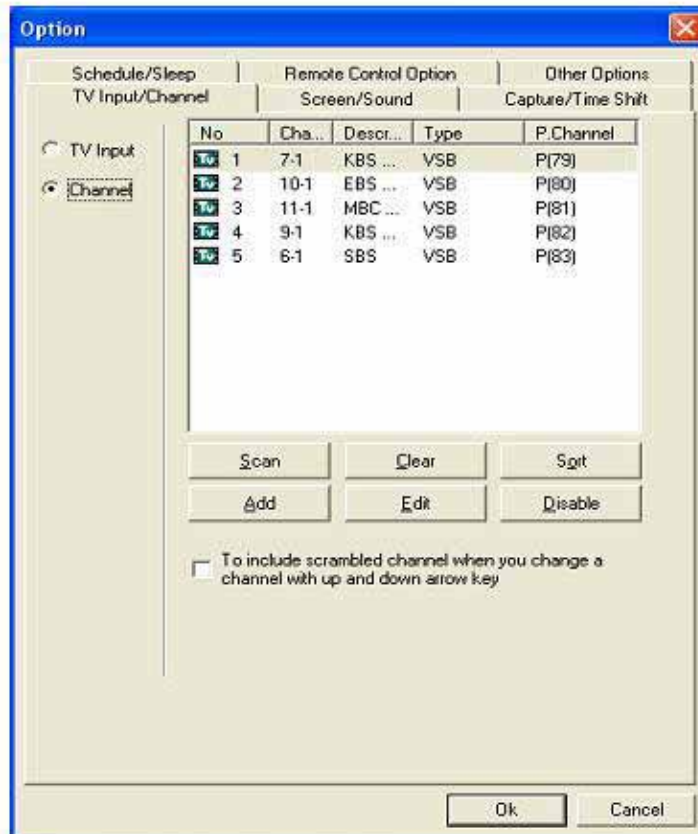
- ◆ TV (A+D): Connects the terrestrial TV antenna.

✚ Cable TV: In case you have a general cable TV service.

- ◆ Country Code: To set your country code to play Live TV. If you choose a different country code, it may cause abnormal operation.
- ◆ External Video Input Standard: Please select proper video input signal format of either NTSC or PAL.
- ◆ Digital TV format option: To watch Digital Cable (QAM) channel, user should mark this option. However, user can't watch the protected channel (CAS).

### 3.2.2 Channel Setup

User can configure the channel in various ways such as scanning, clearing, editing, and protecting.



- ◆ Scan: Automatically scans all channels of Digital TV and Analog TV.



- ◆ Clear: To delete scanned channels from the list window.
- ◆ Add: To add selected channel. When you choose a channel, the virtual channel included in the channel memory will also be added. N.B: Virtual Channel Preference Mode : When scanning the channels, it is preferred that the user scan the virtual channels and display at first. In addition, if you choose this option, the digital TV channels display as virtual channels. For example, if you watch a channel 9.1 in digital TV mode, you can also watch it in analog TV mode as 9. 0.(Same channel number but different TV mode).



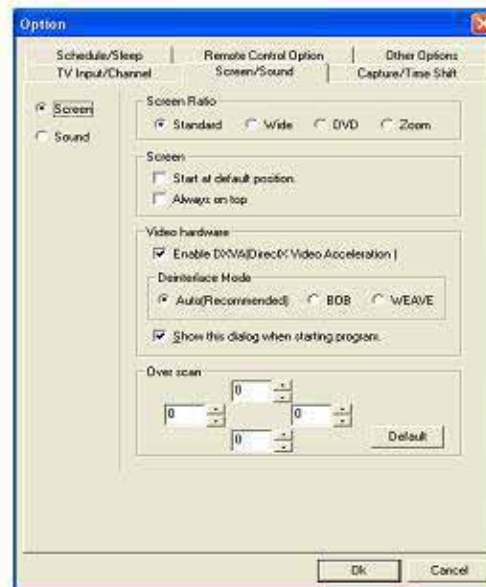
- ◆ Edit : To edit selected channel information, that is, you can type in the channel information.



- ◆ Channel protection: Deactivating selected channels make protected not displayed in moving channel up and down.

### 3.2.3 Screen Setup

User can optimize the settings of the screen by the option of OnAir USB HDTV GT screen. Referring to the description of each part, the user can use USB HDTV GT easily.



#### ✦ Screen Ratio

- ◆ **Standard (4:3):** TV window displays in standard screen ratio size.  
Tip: the proper setting for video and analog TV watching.
- ◆ **Wide (16:9):** TV window displays in wide screen ratio size.  
Tip: the proper setting for HDTV or HDTV stream watching.

- ◆ **DVD (720x480):** TV window displays in DVD screen ratio size.  
Tip: the proper setting for DVD and DVD format file watching.
- ◆ **Zoom in:** TV windows displays in the zoom-in screen ratio. When Digital TV station airs analog TV source after converting to Digital source, there can be black margin on the left and right side of the screen to adjust the screen to digital TV ratio of 16:9. Selecting "Zoom In", the user can erase the black margin and watch the TV in the analog TV ratio of 4:3.

#### **Screen Position**

- ◆ **Start at default position:** Program always starts at default position.
- ◆ **Always on the top:** Always set the TV window on the top. It will prevent the blocking of the TV window when you open the other application windows

#### **Video Hardware**

- ◆ In case of using graphic card supporting DTV Video Hardware Acceleration (DXVA), the user can optimize the system using DXVA. However, if you use a video card that not supports DxVA mode, please disable this option.

**Tip:** To take proper measure in displaying "Program Start Window", the users are recommended to check "Show hardware configuration in starting OnAir USB HDTV GT" explained in the latter part of this manual. There is a list of supported graphic cards in the fourth Chapter, FAQ.



- ◆ **Show hardware configuration in starting OnAir USB HDTV GT:**  
Selected "Show hardware configuration when OnAir USB HDTV GT" starts, OnAir USB HDTV GT displays the below window in starting the program.



The above window displays detailed information of the graphic card in the system. And then, user can select "Hardware Decoding Acceleration (DXVA) "

- ◆ **De-interlaced Mode:** The user can select Auto/BOB/Weave, however, default value of automatic mode is recommended.
- ✓ **Auto mode:** automatically optimizes and changes the screen mode in accordance with the current screen status.
- ✓ **Weave:** the second field is inserted into the gap between first fields. As the most normal way, in case of a film set as the progressive source, user can enjoy the perfect view. However, in case of interlaced source, the video clip with many actions will bring about some transparent horizontal lines in weaving mode and some troubles in watching TV may

appear.

- ✓ **BOB:** BOB was created to figure out problems of weave mode. When the vertical line-doubling appears in the screen of each field, BOB figures out the problem of some transparent horizontal lines. However, when the vertical resolution is lessened to the half, the screen quality is minutely lowered. Despite the lowered screen quality, there is no sharply detected low screen quality in TV or PC monitor.

#### **Overscan Control**

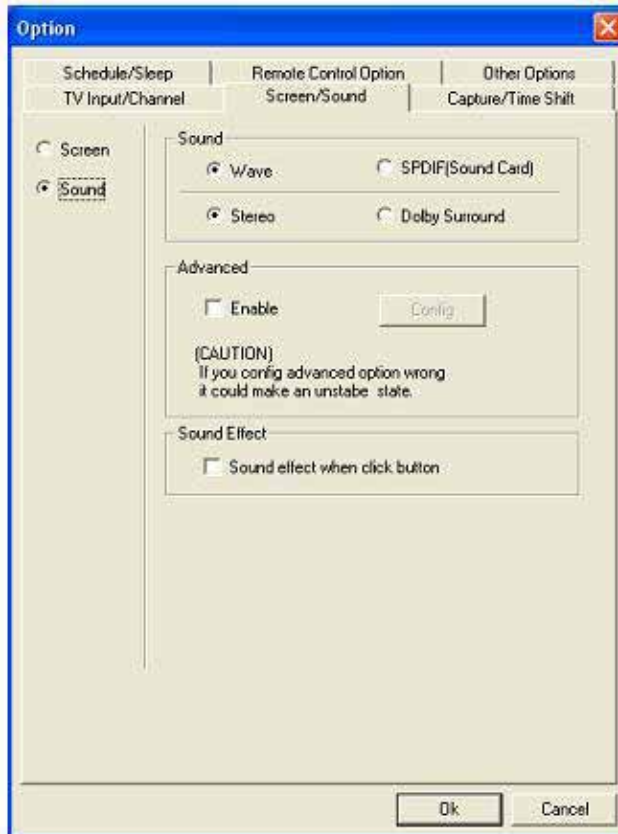
When you watch the live digital TV or live analog TV, some noises may appear at the bottom of TV window. Overscan means to display images through a zoom-in ratio of 1.xx:1 instead of 1:1. Thus, the overscan mode will hide all of the noises that appear in TV window.

To return to the initial condition after setting a certain overscan value, the user just needs a click of "Default".

### 3.2.4 Sound

The user can basically set up sound output format according to the types of sound card and speaker system.

Checking "USE" in the detailed setting, the user can adjust the sound in detail. Also, it can be adjust the sound of running programs.



#### Audio Output

- ◆ **WAVE:** Audio will be outputted as wave format by sound card.

Tip: The user can set up the audio in case of connecting analog speaker with the analog sound output port of sound card.

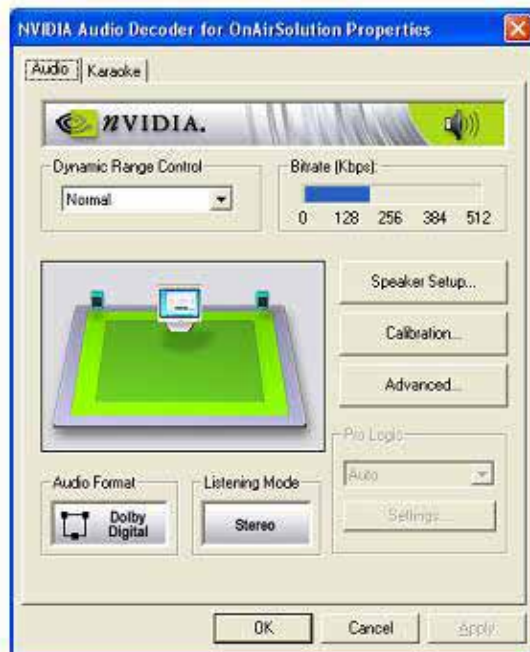
- ◆ **SPDIF (through sound card):** The user can set the audio output as

SPDIF by transferring the audio to the sound card that supports the SPDIF output. Tip: When SPDIF (Coaxial, optical) is outputted through AV receiver or external decoder device, the user can select other options. So it is possible for the users to watch 5.1 channel HDTV Program through 5.1 channel audio out.

- ◆ **Stereo:** To set the audio output as stereo mode
- ◆ **Dolby Surround:** To set audio output as Dolby Surround mode. (It is supported when the video input source is from Digital TV.)

#### 📌 Detailed audio setting

In detailed audio setting, to optimize the system, some specific items are supported. It is supported only in Digital TV mode.



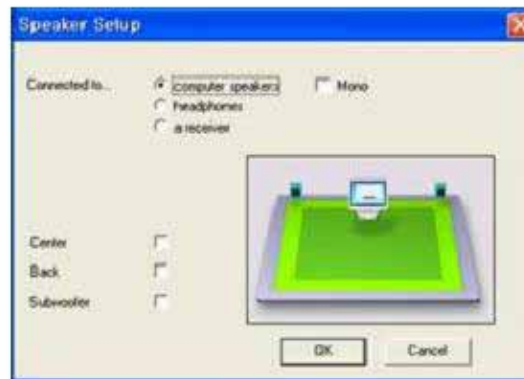
**This product supports Dolby Digital System.**

**This product was made under the license of Dolby Laboratories.**

**“Dolby” , “Pro Logic” and Double D is the trademark of Dolby Laboratories. Unpublished, confidential work. Copyright 1992-1999 Dolby laboratories. All rights reserved.**

- ◆ **Dynamic Range Control:** This device can compress dynamic range of the sound track in accordance with Dynamic Range information in Dolby Digital signal. Unlike analog limiter, compression can be done smoothly since the level is already fixed.

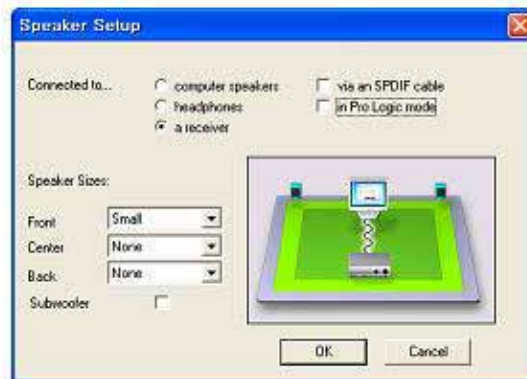
- ✓ **Normal:** With the enhanced recording engineer, the Dynamic Range can be compressed properly for general use.
- ✓ **Late Night:** After an extensive compression of the Dynamic Range, this option is proper for watching TV in the night.
- ✓ **Theater:** When no compression of Dynamic Range is done, this option is proper for watching movies.
- ◆ **Bit rate [kbps]:** In real time, the bit rate of digital audio is displayed in Kbps.
- ◆ **Audio Format:** Audio format of video playback is displayed.
- ◆ **Listening Mode:** Audio format of video playback is displayed.
- ◆ **Speaker Setup:** For the optimized speaker, the user should sets up speaker by this option. Click "Speaker", and the following window will open.



- ✓ **Connected to:** After checking the connecting condition of audio system, the user can select the list in agreement with the user's system.
- ✓ **Computer speaker:** When the user's speak is for computer, and two-channel stereo or higher channel is supported, this option should be

checked. For the users of 4.1channel or 5.1channel speaker, check Center, Back, Sub-woofer to optimize the system. In case of mono speaker, the user should check mono.

- ✓ **Headphone:** Check this option for using a headphone. In case of mono headphone, please check Mono option.
- ✓ **a receiver :** In case of using an additional external AV receiver or Dolby Digital Decoder, please check this option. By checking this mode, user can find the below option to set speaker size.



**Speaker Sizes:** to select user's speaker size

**Large:** Select this option to have the super bass sound by a big speaker with woofer. Generally, "LARGE" is recommended.

**Small:** This option is recommended for a subwoofer speaker, a small speaker, and a satellite speaker

**None:** No speaker for applicable channel.

**Via an SPDIF Cable:** In case of connecting by SPDIF cable, the user had is recommended to check this option. Under this option, the user should set



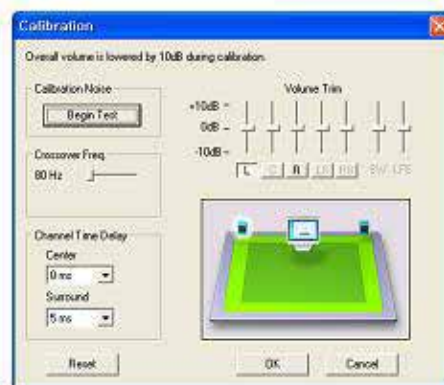
up the speaker in the additional and external AV receiver or decoder.

If this option is selected, this option will be deactivated.

**In the Pro Logic mode:** Please select this option to use Pro Logic Mode. Under this option, the user should set up the speaker in the additional and external AV receiver or decoder.

If this option is selected, this option will be deactivated.

- ◆ **Calibration:** User can set up and control the volume of speaker and the distance between the user, the speaker, and the crossover frequency.



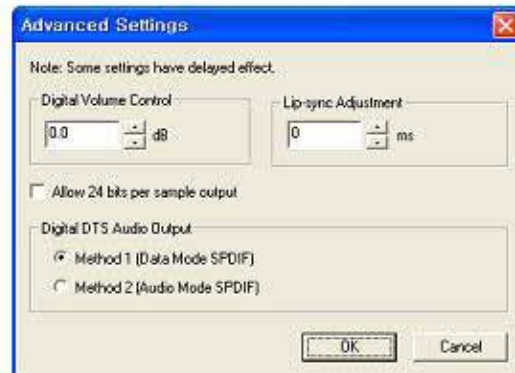
**Calibration Noise:** The user can test "noise" after the adjustment.

**Crossover Freq:** The user can set up the crossover frequency of bass sound. Bass sound frequency can be adjusted from 80 Hz to 120 Hz by 5Hz.

**Channel Time Delay:** By considering the distance from speaker to user, the user can set up the channel time delay.

**Volume Trim:** The user can set up the volume of each speaker in accordance with system.

- ◆ **Advanced Settings:** In accordance with the layout of speakers, the user can set up the audio in detail.



Advanced setup value will be applied after shutting down the window setup. To apply the setup value, the user should log in with the ID of Administrator.

#### Sound Effect

- ◆ **Sound effect for clicking of buttons:** To set the sound effect for clicking the buttons in TV programs.

### 3.2.5 Still Capture

When watching Digital TV/Analog TV/Video/S-Video/D-VHS/File, the user can capture stills.



When clicking "Still capture", red circled, in the operation window, the stills will be captured in the JPG or BMP format in the designated folder that has been set to still capture option of capture/time/shift tab.



- ◆ **Folder:** The user can save the captured video files to set the designated folder. The default folder is "C:\ProgramFiles\OnAir USB HDTV\images."
- ◆ **File format:** To set up the file format for capturing.

### 3.2.6 Video capture

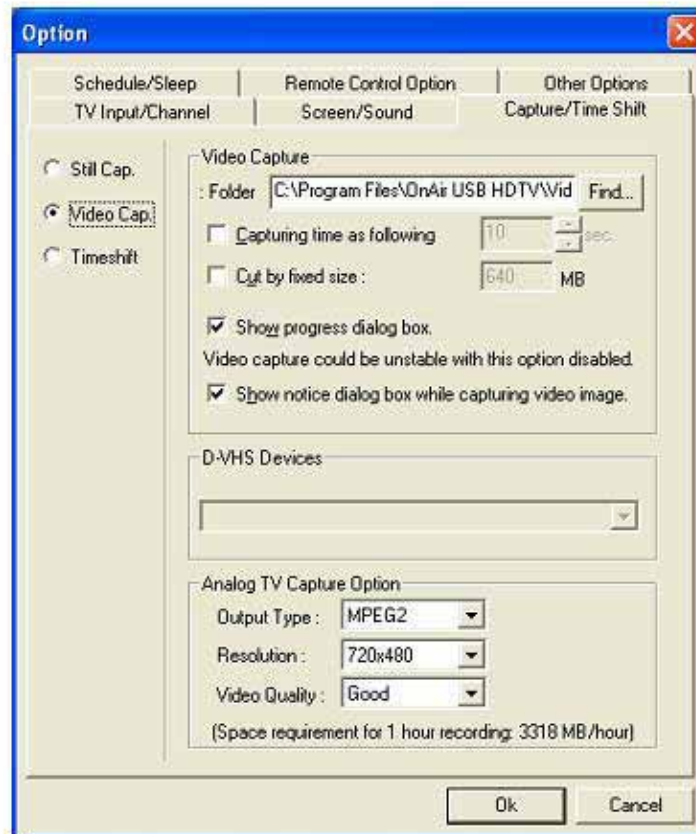
The user can capture the video after selecting video input source from TV/Video/S-video/File/D-VHS. Click the red-circled button in the lower operation window makes it start recording the video.



Click the red-circled button in the upper operation window makes it starting recording the video. Then, like the following window, the path to save files is displayed for 3-4seconds on the upper screen. Also, the recording time, the size of saved file, and the capacity of hard disk display is displayed on the lower screen.



If the capacity of hard disk is not enough for capturing files, the video capture will be stopped automatically. To stop recording video, please click the "■" stop button in the operation window or ESC key on the keyboard. In playback of files, the user can capture and edit the video to be saved.



- ◆ Folder: The user can set the designated folder to save the captured video files. The default folder is "C:\Program Files\OnAir USB HDTV\Videos." The user can designate the folder arbitrarily.

\*Tip: Please do not insert any particular symbols.

- ◆ **Capturing time:** User can capture the video for the selected periods of time
- ◆ **Cut by fixed size:** captures the Video by fixed size of files independently. If you disable this option, you can capture the Video without file-size limitation as one file. However, if your HDD is FAT32 format, then you are limited to capture the Video at a maximum of 4GB. If the captured video is over 4GB, it will separate the files when exceeding 4GB. If your HDD is NTFS format, then you are limited to capture the Video at a maximum of 64GB.
- ◆ **Show progress dialog box:** When you capture the Video, the dialog box is displayed at the beginning and the end. You should disable this option when you capture the Video by schedule.
- ◆ **Show notice dialog box while capturing video images:** When you capture the video, the notice dialog is displayed.
- ◆ In capturing DTV, the file size is different. But the capacity of 130-140mg per minute is required for the hard disk.

- ◆ Comparison of figures between ATV and external input capture

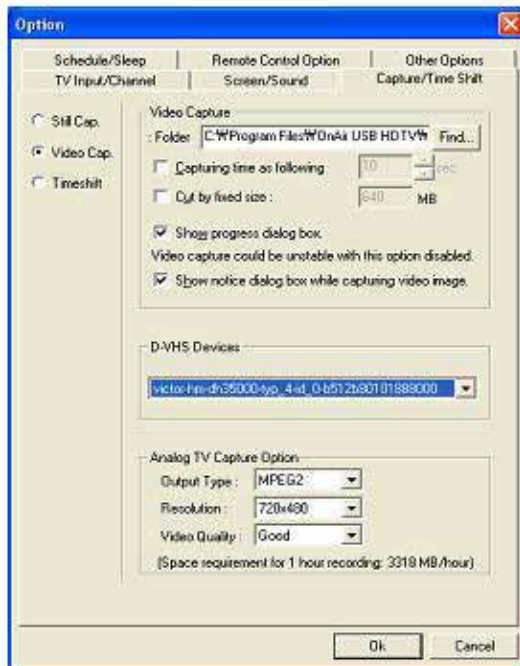
Setting				
Size	Bad	Normal	Good	Best

720X480 MPEG2	1518MB/H 25.3MB/S	2418MB/H 40.3MB/S	3418MB/H 55.3MB/S	4218MB/H 70.3MB/S
640X480 MPEG2	1370MB/H 22.833MB/S	2166MB/H 36.1MB/S	2967MB/H 49.45MB/S	3768MB/H 62.8MB/S
480x480 MPEG2	1068MB/H 17.8MB/S	1667MB/H 27.783MB/S	2270MB/H 37.833MB/S	2868MB/H 47.8MB/S
352x480 MPEG2	830MB/H 13.83B/S	1266MB/H 21.1MB/S	1707MB/H 28.45MB/S	2148MB/H 35.8MB/S
352x240 MPEG1	830MB/H 13.833MB/S	938MB/H 15.633B/S	1158MB/H 19.3MB/S	1266MB/H 21.1MB/S

Unit h=hour Unit s=minute

### 3.2.7 How to use D-VHS device

OnAir USB HDTV supports the function of saving HDTV/MPEG2 TS(.tr p file) to D-VHS, playback of D-VHS file, and saving video as MPEG2 TS in playback.



- ◆ D-VHS Devices: It displays the D-VHS connected with your system. If you have more than one D-VHS device, please choose a correct D-VHS device that you are willing to save the HD stream into because it displays all D-VHS devices connected with your system

### 3.2.8 How to use OnAir USB TV GT in playing DTV

User can change the channels of Digital TV. Selecting the channel, the user can capture video on D-VHS Device.





1. [Open] Load file and Play [FILE]
2. [Stop] In recording DTV, OnAir USB stops recording DTV on DVHS tape, otherwise DVHS stops.
3. [Play] Plays DVHS tape
4. [FR] Fast Rewind of DVHS tape
5. [SR] Slow Rewind of DVHS tape
6. [SF] Slow Forward of DVHS tape
7. [FF] Fast Forward of DVHS tape
8. [REC] Records [DTV] on [DVHS tape]

### 3.2.9 How to use OnAir USB TV GT in playing [File]

When saved MPEG2 TS file is played in this Play File mode, the user can record this file on D-VHS device by clicking "8" recording button.



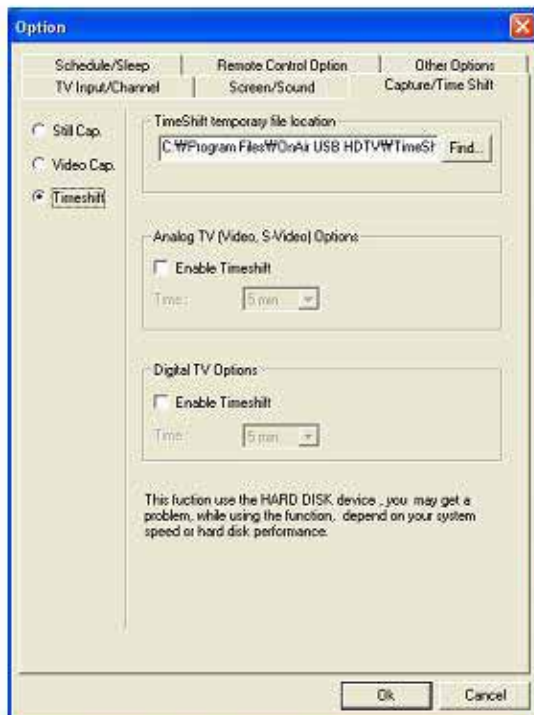
1. [Open] Load file and Play [FILE]
2. [Stop] In recording DTV, OnAir USB stops recording DTV on DVHS tape e, otherwise DVHS stops.
3. [Play] Plays DVHS tape
4. [FR] Fast Rewind of DVHS tape
5. [SR] Slow Rewind of DVHS tape
6. [SF] Slow Forward of DVHS tape
7. [FF] Fast Forward of DVHS tape
8. [REC] Records [File] on [DVHS tape]

### 3.2.10 How to use OnAir USB TV GT in playing D-VHS



1. [Open] No Function
2. [Stop] In recording DVHS, OnAir USB stops recording DVHS as a file format. Otherwise, it will be changed to PLAY DTV.
3. [Play/Pause] Plays/Pause s[DVHS tape]
4. [FR] Fast Rewind of DVHS tape
5. [SR] Slow Rewind of DVHS tape
6. [SF] Slow Forward of DVHS tape
7. [FF] Fast Forward of DVHS tape
8. [REC] Records video of [DVHS tape] on [FILE]

### 3.2.11 Time Shift



- ◆ Folder: The user can designate folder to save temporary captured video files. Recorded file is played and saved in the designated folder. The default folder is "C:\Program Files\OnAir USB HDTV\Time Shifting".
- ◆ Time shift running: The user can select the "Running analog TV", "Video", and "S-video."
- ◆ Time: The user can set certain periods of time to temporarily capture the video, for instance, by 5Min, 10Min, 30Min, and 60Min. The shown free space is displaying the free space of hard disk in which the upper designated folder located. And available space capacity is displayed in

the parenthesis.

- ◆ Recording: In the time shift, the user can record TV. To start recording, please click the "Record" button on the operation control window or press "Ctrl+R". To stop recording, press "ESC" or click "Stop" button on the operation control window.
- ◆ Analog TV Video Quality: You have four choices such as Best, Good, Normal, and Bad. Definitely, it will affect the video quality.

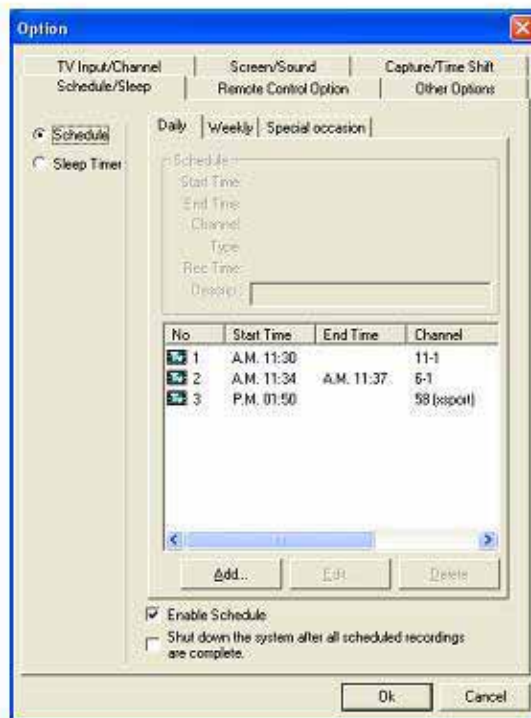
The table below shows the storage capacity of recording TV per minute in each screen quality. OnAir USB TV sets up the screen quality and the schedule of Time shift after checking storage capacity of Hard disk. The value in the below table can differ according to the conditions of the input signal analog TV or the system's environment.

Best	70mb / per min
Good	56mb / per min
Normal	41mb / per min
Bad	26mb / per min

\* **What is Time-Shift?\*** While playing live Analog TV, the user can pause the live TV for pre-defined periods of time by Time-Shift. In real-time for pre-defined period of time while playing Live TV, users can record live TV by Time-Shift. It helps you not to miss any part of Live TV even while you stay away from the TV for a moment

### 3.2.12 Scheduled Recording

The user can set recording schedule daily, weekly, or occasionally, can add the scheduled recordings by a maximum of 20 ones.



### 3.2.13 Daily Schedule

The user can record Live TV at daily-selected time.

- ◆ **Start Time:** The user can set the start time of recording schedule or playing scheduled Live TV
- ◆ **End Time:** The user can set the end time of recording schedule or playing scheduled Live TV.
- ◆ **Channel:** The user can set the channels by entering input channel number or clicking retrieve channels button. In case of using video input port, enter channel no. 500 for scheduled channel. Also for s-video, please enter channel no. 501 I.
- ◆ **Record:** If you uncheck the record reservation option, the recording is not activated. Selected the scheduled recording, "recording time" will be

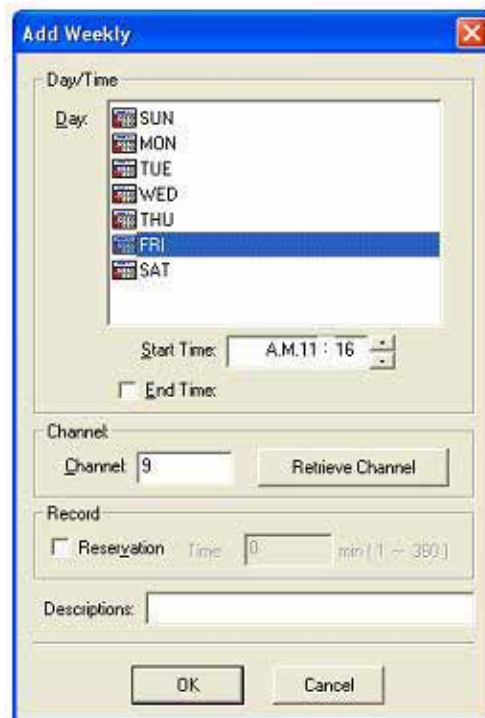
activated. "Recording time" will be automatically set between "Start time" and "End Time." Recording time can't be set beyond the range between "Start Time" and "End time." Also, recording time should be from one minute to 180 minutes. From initializing to completing the recording, it takes about less than 2 seconds, because of which the image and sound may go through some interruptions.

- ◆ **Description:** The user can insert the description of recording program information.

### 3.2.14 Weekly Scheduling



The user can record Live TV on selected day or time weekly



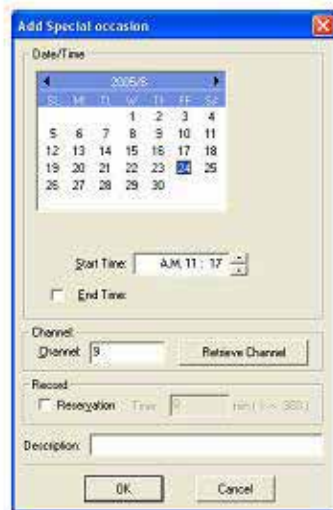
- ◆ **Day/Time:** The user can set the day of recording
- ◆ **Start Time:** The user can set the start time of recording schedule or playing scheduled Live TV play.
- ◆ **End Time:** The user can set the end time of recording schedule or playing scheduled Live TV.
- ◆ **Channel:** The user can set the channels by entering input channel number or clicking retrieve channels button. To retrieve channels,

channel scanning should be activated. In case of using video input port, enter channel no. 500 for scheduled channel. Also for s-video, please enter channel no. 501.

- ◆ **Record:** If you uncheck the record reservation option, the recording is not activated. Selected the scheduled recording, "recording time" will be activated. "Recording time" will be automatically set between "Start time" and "End Time." Recording time can't be set beyond the range between "Start Time" and "End time." Also, recording time should be from one minute to 180 minutes. From initializing to completing the recording, it takes about less than 2 seconds, because of which the image and sound may go through some interruptions.
- ◆ **Description:** The user can insert the description of recording program information.

### 3.2.15 Occasional Scheduling

The user can record Live TV on occasional day or time.



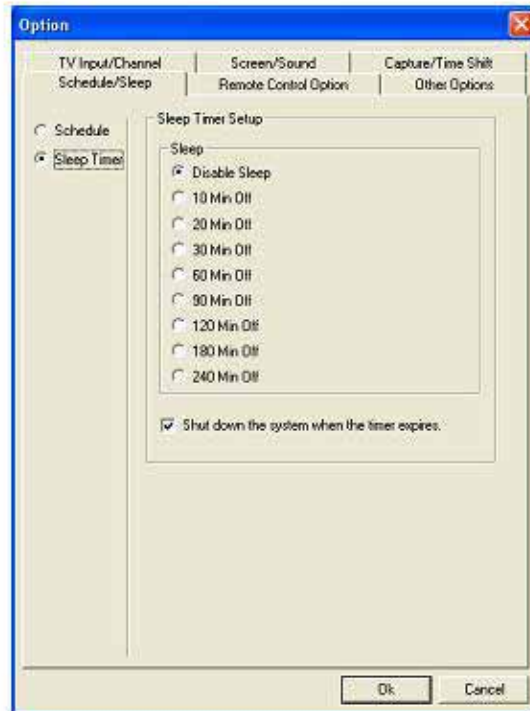
- ◆ **Day/Time:** The user can set the day of recording
- ◆ **Start Time:** The user can set the start time of recording schedule or playing scheduled Live TV play.
- ◆ **End Time:** The user can set the end time of recording schedule or playing scheduled Live TV.
- ◆ **Channel:** The user can set the channels by entering input channel number or clicking retrieve channels button. To retrieve channels, channel scanning should be activated. In case of using video input port, enter channel no. 500 for scheduled channel. Also for s-video, please enter channel no. 501.
- ◆ **Record:** If you uncheck the record reservation option, the recording is not activated.

Selected the scheduled recording, "recording time" will be activated. "Recording time" will be automatically set between "Start time" and "End Time."

Recording time can't be set beyond then range between "Start Time" and "End time." Also, recording time should be from one minute to 180 minutes. From initializing to completing the recording, it takes about less than 2 seconds, because of which the image and sound may go through some interruptions.

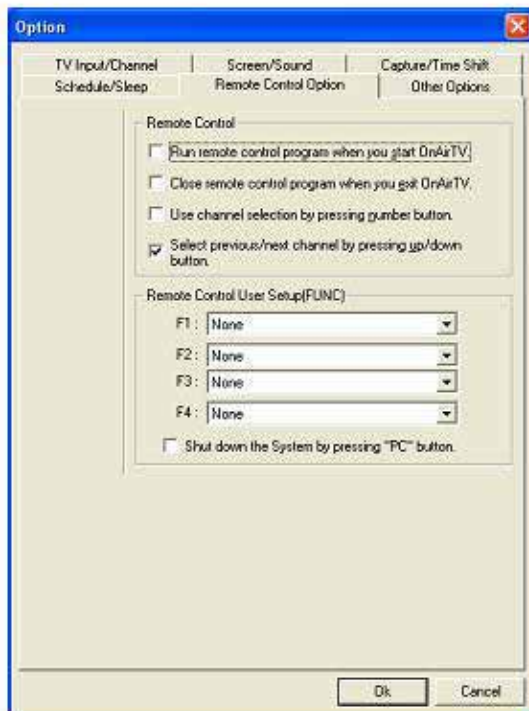
- ◆ **Description:** The user can insert the description of recording program information.
- ◆ **Enable Schedule:** It is required to check the "Enable Schedule" to activate prescheduled playing and recording. If you uncheck it, then it does not activate. There are two scheduling options such as scheduled playing and recording.
- ◆ Shut down the system when you close the program after completing scheduling the recording: If the scheduled recording is completed, then shut down the system to close the program. However, it requires setting the end time.

### 3.2.16 Sleep Timer Setup



The sleep timer sets the time for automatic closing of TV program after a certain period of time. If you enable the check box of "Shut down the system when the sleep timer closes the TV program," the system will shut down simultaneously when TV program closes.

### 3.2.17 Remote Controller

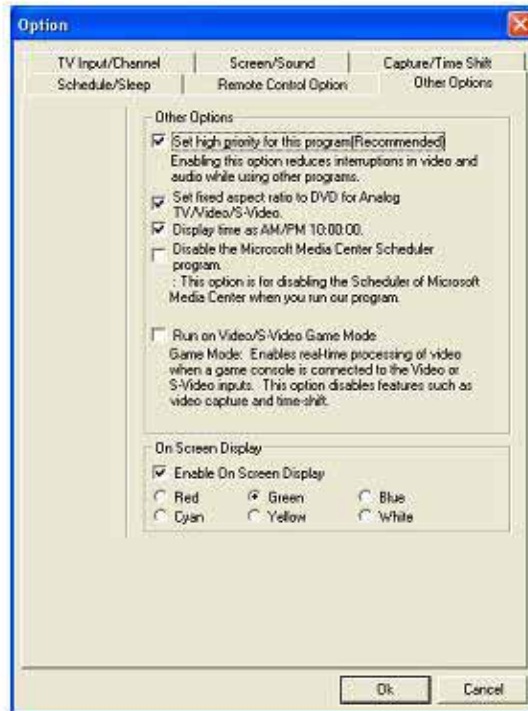


- ◆ **Run remote control program when you start OnAir TV:** It starts the remote control program when the TV program activates.
- ◆ **Close remote program when you exit OnAir TV:** It closes the remote control program when selecting channels by pressing numeric buttons and setting the remote controller's number buttons to select the saved channels.
- ◆ **Select previous/next channel by pressing up/down buttons:** To set the remote controller's channel button to select the channels by pressing

the buttons to choose previous channel or next channel.

- ◆ **User's Remote Control Setup (FUNC):** The user can set the customizable buttons of F1~F4.
- ◆ **System Shut Down by "PC" button:** If you choose this option, the system will be shut down by pressing the "PC" button from the remote controller.

### 3.2.18 Other Options



- ◆ **Set high priority for this program:** When you use other application programs while simultaneously using OnAir USB HDTV, it may cause a problem in mis sync or frame loss. It is recommended to avoid those problems
  
- ◆ **To set the fixed aspect ratio of DVD for Analog TV/Video/S-Video:** To set the analog TV, Video, and S-Video as fixed DVD screen. If you



enable this option, the screen aspect ratio is not changed in the operation control window. Moreover, option→Screen / Sound→Screen setup→Screen Ratio is not applicable.

- ◆ **Display time in AM/PM format:** Time format is displayed by the setup on operation control window.
- ◆ **Disable the Scheduler program of Microsoft Media Center:** OnAir USB HDTV supports Microsoft Media Center. It will disable the Scheduler program of Microsoft Media Center when you run the OnAir USB HDTV.
- ◆ **Running Video/s-video game mode:** OnAir USB HDTV displays Analog TV, Video, and S-video on TV screen after encoding and decoding hardware MPEG 2. In reality, OnAir USB TV displays TV screen one second later than the real screen. So, the time difference interrupts playing game smoothly when connecting video and s-video with a video game device.

✓ Operation Control	Ctrl+1
✓ Color Adjustment	Ctrl+2
✓ Play List	Ctrl+3
Zoom	Ctrl+4
Video Input ▶	
Closed Caption	Ctrl+T
✓ Deinterlace Mode	Ctrl+G
Screen Size ▶	
Always on Top	
Capture ▶	
Options...	
About TV...	
Help	F1
Exit	Alt+F4

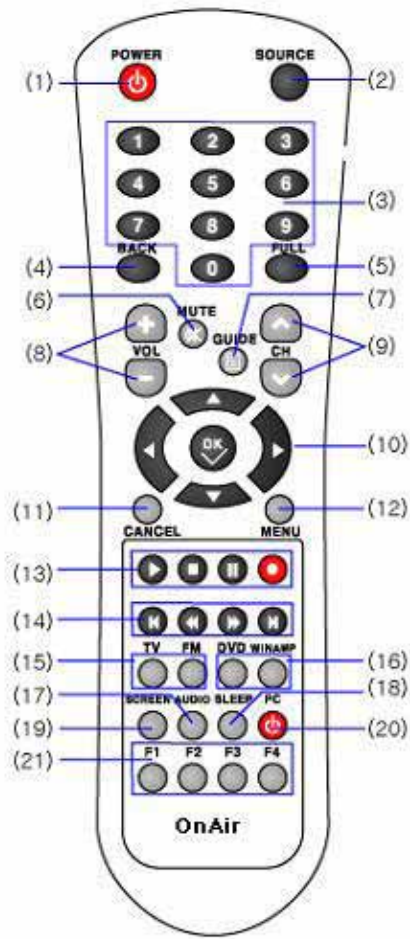
- ◆ This function is for the user to play game smoothly by processing video data in real time. In game mode, some functions such as video capture and time shift are not supported. The user can make the sub-menu window displayed by selecting this option, setting video input as video and s-video, and a right click on mouse. Besides, de-interlaced mode will be added. In case of using a fast screen like a video game, de interlaced mode will be recommended.
- ◆ Enable OSD: The user can set the on-screen display color of TV window such as volume, channel, and option.







## 3.2. 19 How to use Hot key

Hot key	Function
Ctrl + 1	Operation Control Window
Ctrl + 2	Color Adjustment
Ctrl + 3	Play List
Ctrl + 4	Zoom Navigator
Tab	Video output Change (Digital TV <-> Analog TV)
PgDown	Video Output Change (DigitalTV, AnalogTV, Video, S-Video)
Ctrl + Enter	Full screen
Ctrl + D	Desktop
Ctrl + J	Standard
Ctrl + K	Wide
Ctrl + L	Zoom in
Ctrl + H	DVD
PgUp	Change the screen size ( <u>reduce/enlarge/full screen</u> )
↑	Next channel to registered channel
↓	Previous channel to registered channel
+	Channel up by one channel
-	Channel down by one channel
→	Volume up
←	Volume down
Home	Previous channel
End	mute

Hot key	Function
Space	Still capture
Ctrl + R	Video capture
Ctrl + C	Still copy
ESC	Stop video capture
Ctrl + T	Display Caption (English Captioned Program in analog TV, Video, S-video)
Ctrl + G Game mode)	Deinterlaced mode (Only in Game mode)
Ctrl + Z	Time for sleep mode
Ctrl + N	Displays OSD
D-VHS playback	
Ctrl + V	D-VHS playback
Ctrl + R	Recording
ESC	End D-VHS
F1	HELP
Alt + F4	Close TV program

### 3.2.20 Remote control button description



Section	Function
1) Power	TV on/off
2) Source	Digital TV/ Analog TV/ Video/ S-Video
3) Numeric button	Manual input of channel
4) Back	Previous channel
5) Full	Full Screen
6) Mute	Sound off
7) Guide	This function will be supported in the near future.
8) Vol +/-	Volume up/ down
9) CH ↑↓	Registered channel up/down
10) ←/↑/→/↓	This function will be supported in the future
11) Cancel	Cancel button
12) Menu	This function will be supported in the future
13)	 File playback/stop
	 Pause
	 Video Capture
14)	 In playback, previous or next file selection
	 In playback, rewind, fast forward
15)	TV In playing TRP file, Change to TV mode
	FM No function
16) DVD/Winamp	No function
17) Audio	Stereo/Dolby surround
18) Sleep	Timer function button (sleep)
19) Screen	Standard, Wide, Zoom in, DVD
20) 	Power off
21) FUNC	Set function on options for F1/F2/F3/F4

#### 4 FAQ

The followings are Frequently Asked Questions

**Q:** Can I use OnAir USB HDTV GT in Microsoft Windows 2000?

**A:** Though OnAir USB HDTV GT supports Microsoft Windows 2000, you can't use D-VHS function. And your system should meet the below system requirement.

##### **System requirement**

Windows 2000 Service Pack 4

Main board supporting USB 2.0

Not supporting the main board equipped with NEC USB 2.0 Controller

Direct X 8.1 or higher

Nvidia Detonator Driver [VGA supporting DXVA]

ATI CATALYST Driver [VGA supporting DXVA]

**Q:** Is closed caption data saved in recording video?

**A:** Captioned data will not be included in recorded video.

**Q:** Can I save the closed caption data as text file?

**A:** Saving as text file is not supported.

**Q:** I'm using Intel Internal Graphic card (Extream Graphics 2). Is there any suggestion for using USB HDTV GT on it?

**A:** This graphic card doesn't support DxVAmode. In result, the system can be shut down. If not updated to the latest version (6.14.10.3722), the system can be shut down without using DxVA mode. If this problem occurs, please update the driver of Intel graphic card at Intel's official website. ([http://downloadfinder.intel.com/scripts-e+Header\\_Supp\\_downloads&](http://downloadfinder.intel.com/scripts-e+Header_Supp_downloads&))

**Q:** The error message of " You can't see the TV screen because other application program (such as DVD player, Video player and so on) uses overlay resource for starting TV program" often appears.

**A:** This message appears when the overlay part of video memory is already in use. The followings are examples of the message.

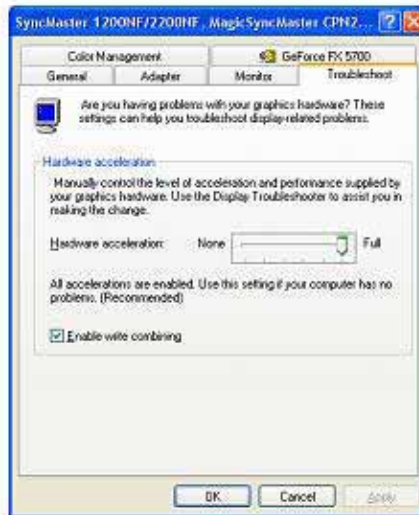
1. You can use OnAir USB HDTV GT normally after closing DVD player, video player, or net- meeting that are using the overlay part of video memory.
2. When the resolution or color is set up too high, or sets up dual output or pivot function of graphic card, you have to lower the resolution and color and close dual output and pivot function at control panel>Display>option. Then you can use OnAir USB HDTV GT normally.
3. If the hardware acceleration (control panel>Display property>Option> Higher>Help) is not set as "Maximum use", you have to set it as



"Maximum use".

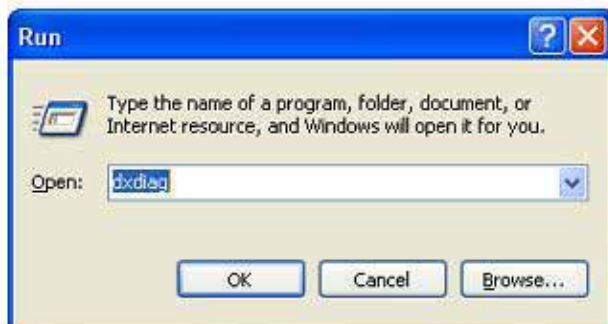


Pic 1

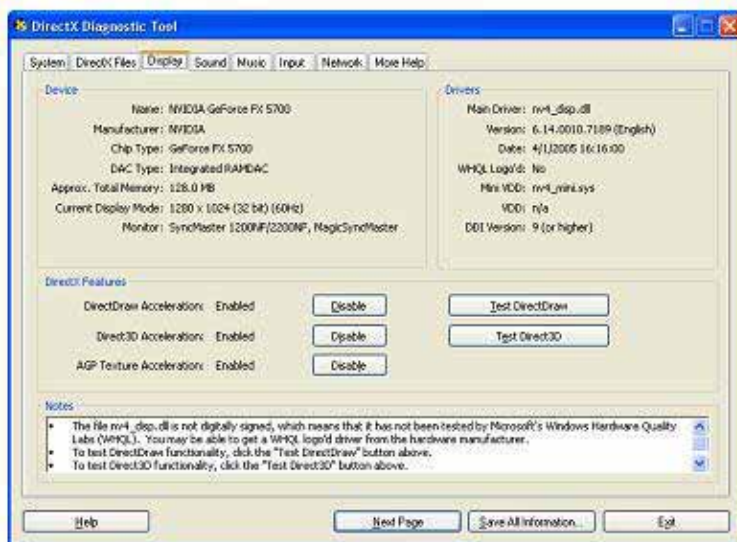


Pic 2

4. If Start>>Registry>>Dxdiag>>Display Tab>>"Use" of Direct Draw on Direct X is not set, you have to check this option as "Use".



Pic 1



Pic 2

**Q:** What kind of graphic card supports DXVA?

**A:** The following is the list of graphic cards supporting DXVA.

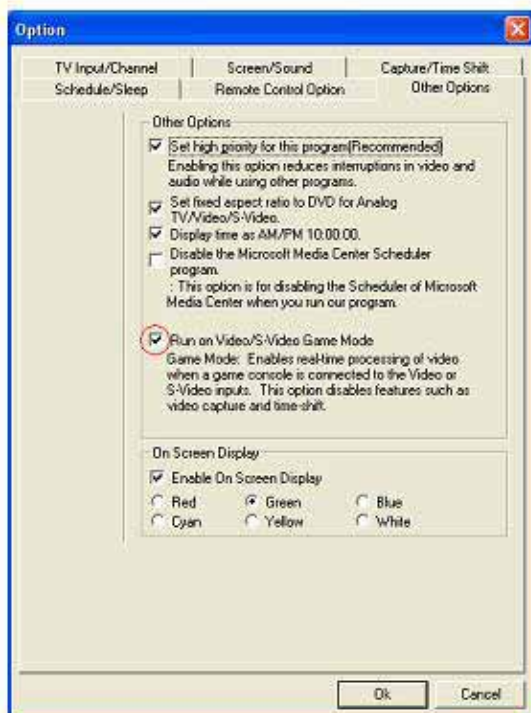
ATI	NVIDIA
Radeon 7200/7500	Geforce 4 MX 420/440/460/4000
Radeon 8500/9100	Geforce FX 5200/5300
Radeon 9000/9200	Geforce FX 5600
Radeon 9500/9700	Geforce FX 5700/5750
Radeon 9550/9600/9800	Geforce FX 5800/5900
Radeon X800/X700/X600/X300	Geforce FX 6200
Radeon 9100 IGP	Geforce FX 6600
Mobility Radeon 7500	Geforce FX 6800
Mobility Radeon 9000	Geforce 4 Go 420/440/460
Mobility Radeon 9600/9700/9800	Geforce FX Go 5100/5200
Mobility Radeon 200/X600/X700	Geforce FX Go 5600/5650/5700
	Geforce FX Go 6200/6600/6800

In case of Intel Extream Graphics 2(Intel 865G/82852/82855), if you use version 14.10 registered in Intel website on 25, January 2005, DXVA is supported partially. In other words, the graphic card uses less space in CPU, and no system will shut down. However, the cause of frame loss per min. is

still not figured out.

**Q:** Is there any problem when we connect Playstation 2, Microsoft XBOX with OnAir USB HDTV GT and play video games?

**A:** Please check "Running Video/s-video game mode" found in "Other Option" under "Option". Then you can play video games normally.



**Q :** I heard Norton Anti-virus version 2003/2004 make it happened that video and sound are disappeared after some time. How can I figure a way out of this problem?

**A :** When the sound and video is not working in the system with "Norton Anti Virus Version 2003/2004" installed, please change the video source first. If this problem is still happens, it seems that "Norton Anti virus 2003 controls some specific files. To solve this problem, you'd better uncheck Windows (MSN) messenger in Configure Norton Configure Norton Anti Virus>>Internet>>What instant messengers to protect Mssenger>>'MSN Instant Messenger (recommended)' in Norton Anti Virus version 2003.



**Q:** My main board doesn't support USB 2.0, so I will buy a USB 2.0 controller. Please recommend some products for me.

**A:** Presently you can buy a USB 2.0 controller card equipped with the chipset of NEC, VIA, ALi and so on.

In case of using a USB 2.0 controller card equipped with VIA chipset, there is no problem in running OnAir USB HDTV only. However, with USB 1.1, malfunction can be happened. If you have to install a USB 2.0 controller card additionally, it is recommended to use a USB 2.0 controller card with NEC chipset.

**Q :** How can I set up the external input port in scheduled recording?

**A:** For setting up the scheduled recording, please input the channel no. 500 (Video) and no. 501(S-Video).

**Q:** In capturing, error message about the filter like [ErrorCode = 1177000000] [hr = 80040154] (Failed: Build MPEG2TS (DVRP) Capture Graph) appears. How can I resolve this?

**A:** If the above error code (1177000000) about the filter appears on the screen, please check if OnAir Filter SDK is registered in program add/del under the control panel.

If you have installed Filter, please delete it first. After selecting OnAir Filter SDK folder under program folder, you have to run setup.exe to re-register the filter. Then the problem will be solved.

**Q:** I am using laptop PC. Is there any suggestion for using USB HDTV in the laptop PC?

**A:** OnAir USB HDTV GT works normally on the VGA supporting the following DxVA modes.

- \* ATI Mobility RADEON 7500(32 MB or higher) VGA or higher
- \* nVidia Geforce 4 Go (at least 32 MB or higher) VGA or higher

DxVA mode of Microsoft helps OnAir USB HDTV output normal video without any frame drop.

The user can set up DxVA mode in the option menu of OnAir USB HDTV

program. However, in case of using VGA not supporting DxVA, there can be some frame drops due to the decoding of video source by Full CPU.

As you know, the Graphic Driver for laptop PC is not often updated. So Driver may not support DxVA mode. If you have installed this driver that doesn't support DxVA Mode, high CPU resource, frame drops or System Crashes can happen. Finally, you have to disable DxVA mode or update Driver to the one that supports DxVA.

Please visit the below website to update Graphic card Driver.

\* Graphic Driver Release Site: <http://www.omegacorner.com>

However, we recommend that you update the program from Laptop manufacturers' websites.

**Q:** After returning from Power Save mode, while starting TV program, the program was shut down or the video output was abnormal.

**A:** In case of using a ATI Radeon graphic card, shut down can happen. We found out that this problem is found in the graphic card's inability to restore DxVA after returning from Power Save mode.

This problem has already been reported and improved by ATI, but new catalyst driver has not yet been updated. It seems that it'll take some time for ATI to release advanced version. We think this problem will be solved by new versions of Catalyst Driver.

Through the problem of the system down on the current version of Nvidia



graphic card and the problem that in returning from Power save mode, one third of right-screen is overlapped by one third of left-screen, in result, the user can't watch one third of right-screen. This problem is already reported to Nvidia. As of now, we haven't received any report on the solution for this problem, but it is likely to be solved in the next version update.

**Q:** There is the option of setting up Best, Good, Normal, and Bad in recording. What's the difference between them?

**A:** There is the difference in size like the following figures. (bit rate/sec)

Best	70mb/ <u>per</u> min
Good	56mb/ per min
Normal	41 mb/ per min
Bad	26mb/ per min

**Q:** The screen is not displayed in the dual monitor mode. How can I solve this problem?

**A:** Why don't you lower the resolution and color in the Option tab>>Display property? You can solve this problem. If not solved, you'd better change the set value of dual monitor.

**Q:** Can I use OnAir USB HDTV GT on Windows 2003?

**A:** As of now, OnAir USB HDTV GT supports only Windows XP. We regret to inform you that we cannot guarantee our product's normal operation on Windows 2003. Also, there is no plan to support Windows 2003 now. We

always appreciate your interest in our OnAir USB HDTV products and please keep the above mentioned information in mind upon the purchase of our products.

**Q:** Remote control is not working.

**A:** Please check if the remote control program is working normally. Then, check the battery status. If there is no problem in both cases, please restart the system. If this problem persists even after restarting your system, we presume the remote control has some problem. Then, please send the product (remote control and OnAir USB HDTV GT) to our technical support dept. or visit our office for the technical support.

**Q:** The power LED for OnAir USB HDTV GT does not work. How can I solve this problem?

**A:** First, you'd better check if OnAir USB HDTV GT is properly connected with USB port or the power adapter. Even if either of two is not connected with OnAir USB HDTV GT, power LED does not light. For normal connection, please refer to the following picture.

If this problem recurs despite normal connection, we presume that your product has a problem, and recommend that you visit our company with the product for technical support.

