

Polaroid Smart Alarm
PSMAA10NA



Congratulations on buying this alarm system. Installing the alarm system is easy and quick. Before using the product we recommend you read the manual first. There are some parts of the installation which have to be done in the right order to complete the installation successfully.

Contents

Overview of the alarm system

In the box

Included accessories

Operating principle of the alarm system

Sensors

Sensor placement

Grouping sensors

Renaming sensors

Test mode alarm system

Record alarm message

Getting started

Inserting SIM card

Turning on the control panel

Network connection (indicator)

Settings inquiry by SMS

Control panel operation

Arming the system

Partially arming the system

Disarming the system with the control panel

Arming/Disarming the system by RFID tag

Record and play back voice message

Naming RFID tags

Speed dial

Phone dial

Changing the language

Disarming the alarm system by SMS

Arming the system by SMS

Partially arming (home mode) the system by SMS

Two-way talk

Leaving a message by phone call

Phone operation when receiving emergency call

Apple and Android App

Adding an account

Polaroid Smart alarm App overview

Setting up the alarm system with the App

Request alarm system status by SMS

Store emergency telephone numbers

Store emergency SMS numbers

Store SMS number for RFID tags arm/disarm notification

Store speed dial number

Change RFID tag names

Change sensors name

Change system arm delay time (exit delay time)

Internal siren setting

Change disarm use code

Setting single zone alarm delay time

Store SMS numbers for status alerts

Wireless siren arm/disarm tone

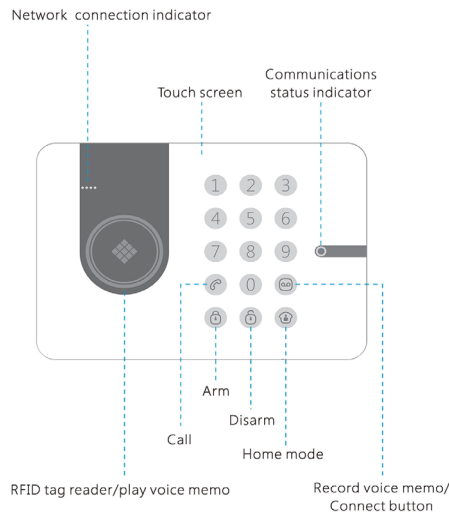
Delete accessories

- Restore system to default setting
- SMS notification of tampering sensors
- Arm & Disarm by free phone call
- Conect (new) wireless accesories & RFID tags
- Connect new wireless sensors
- Connect new RFID tags
- Connect and delete wireless sirens

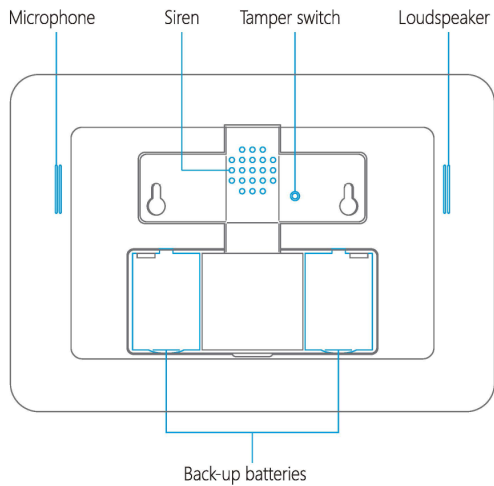
Overview of the Alarm System

In the box

Front View



Rear Side



Included accesories

The Alarm System has the following accessories included in the box:

- English manual
- English quick guide



1 x Wireless door/window
contact DWC-102



1 x Pet-Immune PIR
motion detector PIR-910



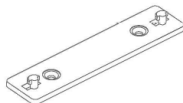
2 x RFID tags TAG-26



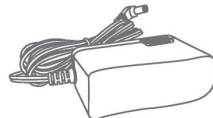
2 x Multifuncional remote
control RC-80



1x Desk stand



1x Wall mount

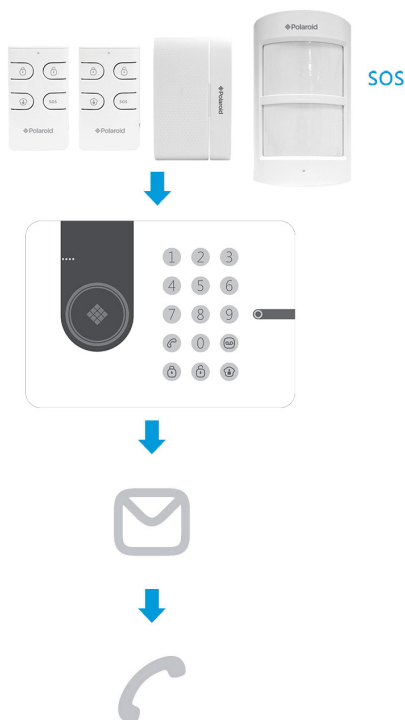


1x Adapter

Operating principle of the alarm system

The alarm system will receive a signal when a sensor has been triggered. The control panel will sound the internal siren and send an SMS to all stored phone numbers. When texting is completed it will then call all stored phone numbers. If a strobe siren has been added to the system it will also sound and flash for the duration of the pre-programmed ringing time limit. Once the time limit is reached the alarm will reset the timer and the system will remain armed in case there is a further alarm activation.

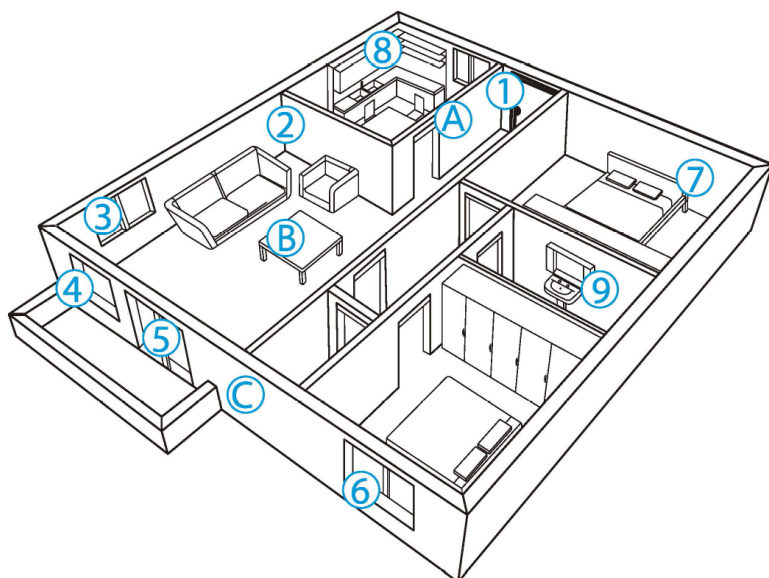
Note: If the alarm is disarmed before it completes texting and/or calling stored numbers, this function will stop because the alarm has been disarmed by an authorised user.



Sensors

Sensor placement

The alarm system is more effective with well-placed and set sensors. Determine which areas you want to monitor and with which sensor. In the picture below are potential places shown for different types of sensors from which you can determine what the best placing is for your space.



Grouping sensors

Each sensor can be placed in a group. Four different groups can be selected. The home group, normal group, 24-hour group or a single zone group.

IMPORTANT: Determine before installing the alarm system which group a sensor should be set on.

IMPORTANT: If sensor group has to be changed, the sensor must reconnect to the control panel.

The figure below shows the four different group settings as can be found inside the sensors. Move the bridges in the desired configuration to set up the group in each sensor.

Normal group: The supplied door/window contact(s) by default are set on the normal group with bridges set on 'D0"D1' and 'D2'. When the alarm is in Arm or Home mode, all the sensors in the normal group will be monitored.

Home group: The supplied PIR motion detector(s) by default are set to the home group with jumpers set on 'D1' and 'D2'. When the alarm is set to Home mode, all sensors in the home group will be ignored by the system. Using the home mode means that it is possible to partially arm the house with the advantage of being able to freely move about without triggering the alarm. When the alarm is set to Arm mode, all sensors in home group will be monitored as well as the other sensors.

Single delay group: One or more sensors can be set to the entry delay group which means there will be a delay before the alarm will be triggered. The entry delay group is used for the likes of an entry door and/or motion sensors that will be triggered on the entry path to gain access to the home. The default delay setting is 30 seconds

but this can be changed to between 0-300 seconds. Refer to page 28. When the alarm is set to either 'Arm or Home' mode, all sensors in the entry delay group will be monitored. The Single delay group also has a door chime feature that can be turned on or off by texting '46701' = On or '46700' = Off. The default is set to off.



24-hour group: The 24-hour group ('D0,D1 and D3') is recommended as default setting for sensors that can detect smoke or gas for instance. When set to this group the sensor is always active and will always send a signal to the control panel when triggered, regardless whether the system is armed or disarmed without delay.

Renaming sensors




The supplied motion detector and door/window contact are by default paired with the alarm system. Every sensor is called a zone and every sensor will get it's own zone number assigned. Their sequence in naming follows pairing order, for example, the first sensor is by default assigned to zone 1 and so on. You can rename the first 30 zone name ie. Front Door, Hallway PIR, Master Bedroom. etc.

Test mode alarm system

The alarm system can be put in a test mode. This will cause the alarm to beep three times when it receives a signal from a sensor which is triggered, instead of ringing the siren.

Disarm (default code:1234) the system, and then press the  button three times in a row on the panel until the system beeps once. After 10 minutes the system will automatically exit the test mode. It is also possible to exit the test mode by pressing the  button.

Record alarm message

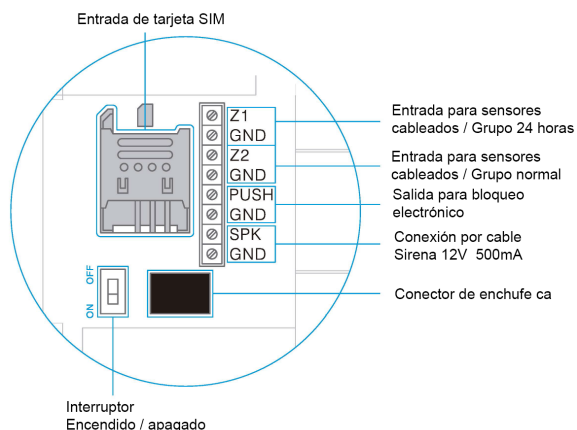
When the alarm is activated the control panel will call the set emergency numbers and play a message. This message can be changed by pressing the  button, then type the disarm code (default 1234), press again the  button and finally press the  button. From that point you have 10 seconds to leave a message.

Getting Started

Inserting 3G SIM card

Before inserting the SIM card, please perform the following steps:

1. Make sure the alarm system is power off.
2. **IMPORTANT:** Remove the (default) code permanently from the SIM card.
3. Turn off the voice mail function if it is enabled.
4. Insert the SIM card into the SIM card holder from the alarm system as shown in the illustration below. Slide the SIM card holder open before putting the SIM card in.



IMPORTANT: In order to use and set up the alarm system, SMS texting will be used. The use of SMS texting costs money. Consult your carrier for the cost.

IMPORTANT: The android and/or Apple App both make use of SMS.

Turning on the control panel

Connect the power adapter to the connector in the back of the system. Then slide the power switch to 'On'.

Network connection (indicator)

After switching on the system, the network indicator is steady on. This indicates that the control panel is searching for a network. When connected to a network the LED indicator will flash once every second.

Note:

1. The control panel will sounds a long beep once per 15 seconds to indicate network disconnection, you can disarm the control panel to stop this sound notification once.

You can also turn on or turn off this function permanently by following the steps below.

Turn off: Press "7400" +  button +  button on the control panel

Turn on: Press "7401" +  button +  button on the control panel

2. Make sure the security code of the SIM card is permanently deactivated.

Settings inquiry by SMS

The settings of the alarm system can be changed by simply sending an SMS with a mobile phone. You can request an entire menu for

information on possible SMS commands. The complete menu consists of three parts which can be requested by sending one, two or three question marks as can be seen in the pictures below.



- 0 Desarmar
- 1 Armar
- 2 Modo Casa
- 3 Conversación de dos vías
- 4 Devolución de llamada
- 00 Consulta de configuración
- ?? Tienda y número de SMS

??

5 Número de tienda de Alarma
 6 Almacenar el número de alarma SMS
 7 Almacenar el número de SMS
 para etiquetas RFID
 8 Guardar número de teléfono de
 marcación rápida
 801 830 Etiquetas RFID aviso SMS
 ??? configuraciones del sistema

???

901-930 Nombre de Zona
 11 Tiempo de retardo de armado del sistema
 12 Volumen de sirena y tiempo de timbrado
 13 Contraseña de desarme
 14 tiempo de retardo de alarma de zona única
 16 Número de SMS para Status de Alertas

Note: Two text messages will be received


Note: If you can not receive the reply message from the control panel, please send 'CSQ' in a message to the SIM card in the control panel. It will reply an SMS and shows the signal strength, the number value is between 1-31. The higher the number value is means a stronger signal in that location. Find a location with good signal to place the control panel.

Control Panel Operation


Arming the system ('All groups')

Press . All the sensors will be activated.

Partially arming the system ('Home group')

Press . Sensors which are set to the home group will not be active when home mode of the panel is activated. All other sensors in other groups will remain active.

Disarming the system with the control panel

Disarming the system with the control panel can be done by entering the 4-digit password (default 1234) and press the  button. You will hear one beep and the system will be disarmed. If you hear three beeps the password is entered incorrectly.

Arming/Disarming the system by RFID tag


Hold the RFID tag close to the RFID reader (circle on the left of the control panel).

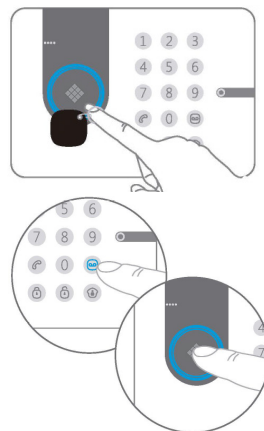
The system will beep as a confirmation it is disarmed.

Swiping the RFID tag twice in 3 seconds will ar

IMPORTANT: The control panel must be connected to AC to use a RFID tag to arm or disarm the system.

Record an play back voice message

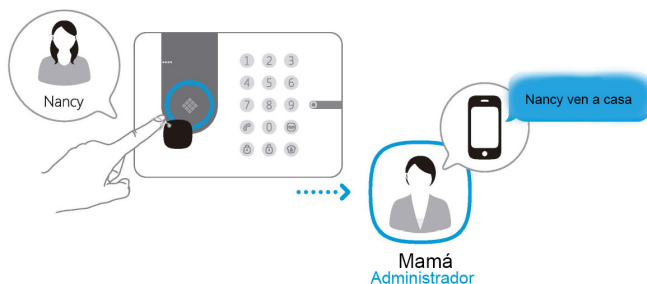
Press the  button for 3 seconds to record a personal message up to 10 seconds. If your message is shorter than 10 seconds, press



the  button to stop recording. The voice message can be played back by pressing the circle.



Naming RFID tags

RFID tags can be given a name if someone arms or disarms the alarm system an SMS message with the name will be sent to the pre-shortened RFID text number.




IMPORTANT: The administrator can only receive a notification if the RFID tag has been assigned and an SMS number for RFID tags is stored. (Settings can be found on page 21 and 23)

Speed dial

When you press , the system will dial the present emergency number immediately. The call ends when you press  again. How to set the speed dial number can be found on page 22.

Phone dial

You can directly enter a phone number and press the  button. The system dials out and you can make the call via the built-in microphone and speaker of the alarm system.

When you press  again the call is ended.

Changing the language

Please change the system language before setting.

English

Send a SMS message with '0001' to the telephone number of the SIM card in the control panel. The language of the alarm system will be changed into English. The control panel will send an SMS message to confirm the language is set successfully.



Dutch

Send a SMS message with '0031' to the telephone number of the SIM card in the control panel. The language of the alarm system will be changed into Dutch. The control panel will send an SMS message to confirm the language is set successfully.



Note: The language can also be set in the Polaroid Smart Alarm App.

Disarming the alarm system by SMS

The main menu, which you receive after texting '?', will display the command for disarming the system ('0'). If you want to disarm the system you only have to send a '0' to the number of the SIM card in the control panel. You will receive a confirmation if it succeeded as shown in the picture below

Disarming



Sistema desactivado

Arming the system by SMS

If you want to arm the system you only have to send a '1' to the number of the SIM card in the control panel.

Arming



Sistema activado

Partially arming (home mode) the system by SMS

If you want to partially arm the system you only have to send a '2' to the number of the SIM card in the control panel.

Home Mode (Stay)



Sistema en modo hogar

Two-way talk

Send a text message with number '3' to the telephone number of the SIM card in the control panel. You will be called back by the system and will be able to listen and/or speak.



Leaving a message by phone call

Send a text message with number '4' to the telephone number of the SIM card in the control panel. You will be called by your system. Pick up the phone, and leave a 10 seconds message. The message can be played back by pressing the circle.



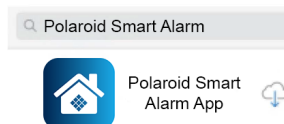
Phone operation when receiving emergency call

When the alarm system is triggered the control panel will call the set emergency numbers. The following commands can be used to command the alarm system:

| SMS | Input |
|----------------------------|-------|
| Disarm | 0 |
| Arm | 1 |
| Turn off siren | 6 |
| Turn on siren | 9 |
| Two-way talk | * |
| Replay alarm voice message | # |

Apple and Android APP

The alarm system can also be operated with an App. You can download it by searching the keywords 'Polaroid Smart Alarm' in the App Store or Google Play.



Download and install the App on your smartphone.

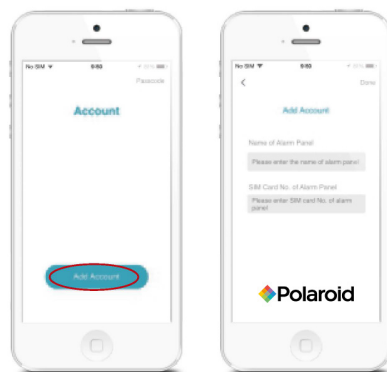
IMPORTANT: The android and/or Apple App both make use of SMS texting.

Adding an account

The alarm system can be operated with the Polaroid Smart Alarm App. When using the Apple App there will be set up a SMS text message automatically for even function. Press text message and set the function you have chosen.

When using an Android smartphone the App will send a text message in the background without needing to confirm sending the message.

Launch the App on your phone and select 'Add account'.



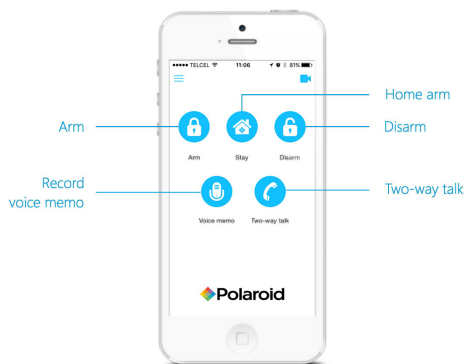
Enter a name for the alarm (eg. Alarm home) and enter the mobile number of the SIM card installed in the alarm system.

Once the account is added it will appear on the home screen of the app.

IMPORTANT: Always start the SIM card telephone number with the area code of the country (eg. 0031 for the Netherlands). This will allow you to operate the alarm system abroad.

Polaroid Smart alarm App overview

The illustration below shows the functions of the home screen of the App. Other tabs will be explained in the following pages.



Setting up the Alarm System with the App

Setting the alarm system can be done by sending text messages but also by using the App. This chapter will show how this can be done for all the function.

Request alarm system status by SMS

Send a text message with '00' to the SIM card telephone number in the control panel.



System armed
System arm delay time: 0sec
Single zone alarm delay time: 30sec
Siren volume: 2
Siren ringing time: 5min
Disarm password: 1234

In the Polaroid Smart Alarm App press the following button:



Store emergency telephone numbers

Emergency numbers are the telephone numbers which have to be called when the alarm goes off. To get a list of the current settings, send '5' to the control panel.

5

Copy the received SMS message entirely and paste it into a new text message. Here you can fill in all the numbers you would like. It's recommended to start with your area code of your country. You can specify multiple phone numbers in the same text message. When you have finished the entry the message can be sent.

TEL:

- 1.
- 2.
- 3.
- 4.
- 5.

Right is an example of a list of numbers filled in the text message.

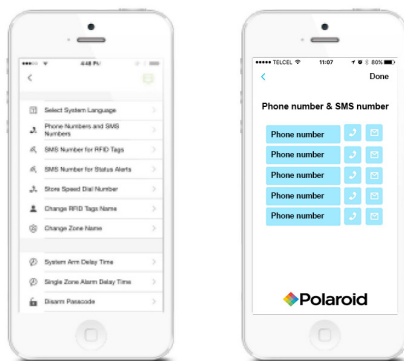
TEL:

1. 00316123654789
2. 00316123654788
3. 00316123654787
4. 00316123654786
5. 00316123654785

Store alarm phone No. successfully.

After sending the message it will send back a message from the control panel to confirm the new settings.

With the Polaroid Smart Alarm App this setting can be done as follows:



IMPORTANT: Only phone numbers stored in the alarm system can make changes and modify the system.

Store emergency SMS numbers

Emergency SMS numbers are the numbers that should be texted to when the alarm goes off. When sending a '6' you will receive the current settings. Copy and edit the text message and send it back. After sending the message it will send back a message from the control panel to confirm the new settings.

6

SMS 1:

1. 00316123654789
2. 00316123654788
3. 00316123654787
4. 00316123654786
5. 00316123654785

Store SMS number for RFID tags

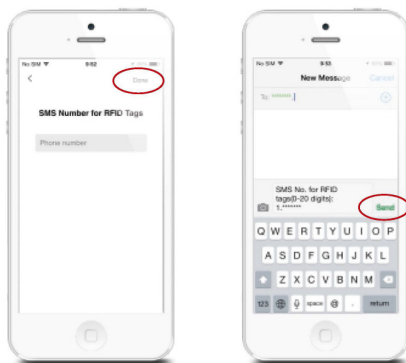
The SMS number for RFID tag is the number which will be used to send a text message to when a RFID tag is used to arm or disarm the system.




Número de SMS para
tarjetas RFID
(0-20 DÍGITOS):
1.

Copy and edit the received text message and send it bak with the new telephone number. After sending the message it will send back a message from the control panel to confirm the new settings.

In the App:



Store speed dial number

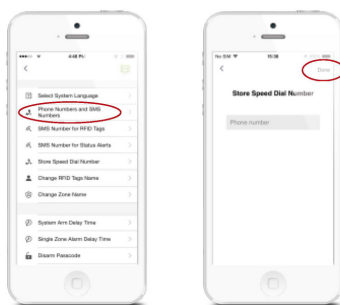
In this menu you can assign a phone number that will be stored as speed dial number. You can speed dial by pressing the  button.

8

número de teléfono de
marcación rápida
(0-20 dígitos):
1.

Copy and edit the received text message and send it back with the new telephone number. After sending the message there will be send back a message from the control panel to confirm the new settings. It is highly recommended to start with your area code or land code.

In the App:



Change RFID tag names

The first 30 RFID tags can be renamed. Sending a text message with “801”, “802”, “803” to “830”, you can edit the names linked to each tag.

801

Cambiar etiquetas
RFID aviso SMS
1.

Left is the response message of the alarm system shown when texting ‘801’ to the control panel. Copy the

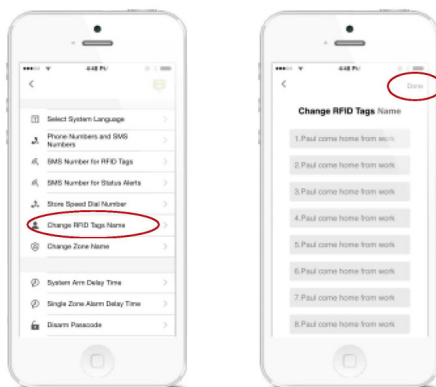
message and adjust the names behind the numbers as shown below.

Cambiar etiquetas RFID
SMS aviso

1. Tom

Cambiar etiquetas RFID aviso SMS con éxito

In the App:



Change sensor name

Each sensor is referred to as a zone. The first 30 sensors (1-30) can be changed according to personal reference. Each sensor (zone) has 30 free characters to fill in a new name. The name of the sensors from zone 31 and higher can't be adjusted. When sending a text message with '901', '902', '903' to '930' you will receive a message back with the zone number and name.

901

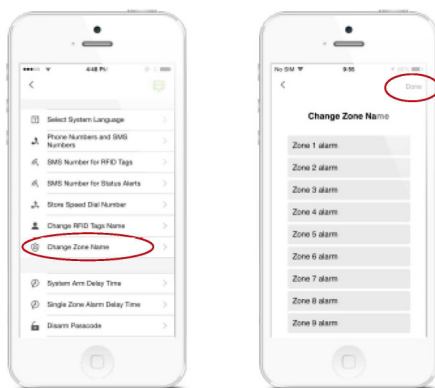
Nombre zona 1: Alarma zona 1

To change the name of the zone you can copy the received text message and replace 'Zone 1 alarm' for a name of your choice

Nombre zona 1: Entrada a puerta sensor

After sending this message you will receive a confirmation of the new settings being adjusted successfully.

In the App:



Change system arm delay time (exit delay time)

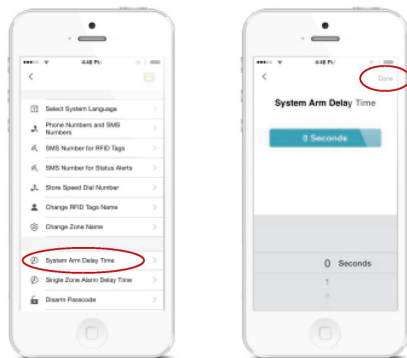
The system can be armed with a time delay. When a delay time is set you will hear a beep every second as a warning of this delay. The beep will go faster in the last 15 seconds.

11

Tiempo de retardo del
armado del sistema
(0-300 sec):
0

Left is the response message of the alarm system shown when texting '11' to the control panel. Copy the message and adjust the time as shown below.

In the App:



Internal siren setting

Arm/disarm tone, alarm volume and duration of the internal siren can be adjusted in this menu.

Arm/Disarm tone: The default setting is ON, it can be turned off by texting '24700' to the control panel or turned on by texting '24701'.

Alarm volume and duration:

12

Volumen de sirena (0 Silencio,
1 despacio, 2 alto):
2

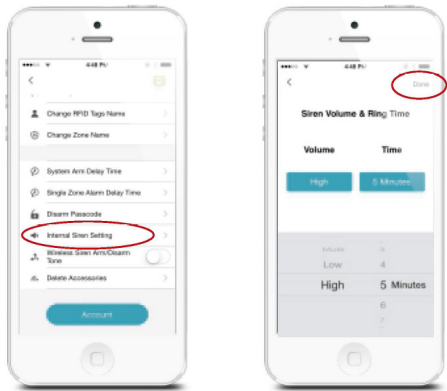
Tiempo de timbrado (1-9 min):
5

Left is the response message of the alarm system shown when texting '12' to the control panel. Copy the message and adjust the volume ('0, 1 or 2') of the siren and the duration of the siren as shown below.

Volumen de sirena
(0 Silencio, 1 lenta, 2 alto):
0
Tiempo de timbrado de sirena (1-9 min):
3

Establecer volumen de sirena y tiempo
de timbrado con éxito

In the App:



Change disarm password

13

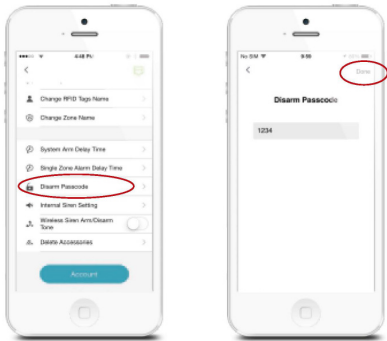
Contraseña de desarme
(4 - 6 dígitos)
1234

Left is the response message of the alarm system shown when texting '13' to the control panel. Copy the message and adjust the user code as shown below.

Contraseña de desarme
(4-6 dígitos)
8888

Establecer contraseña de desarme con éxito

In the App:



Setting single zone alarm delay time

After setting single zone alarm delay time (Single Delay Group), when the single zone sensor is triggered, the control panel will beep once per second instead of alarming

immediately. This allows the user time to disarm the system from the control panel. If the system is not disarmed within the delay time then the alarm will be triggered.

14

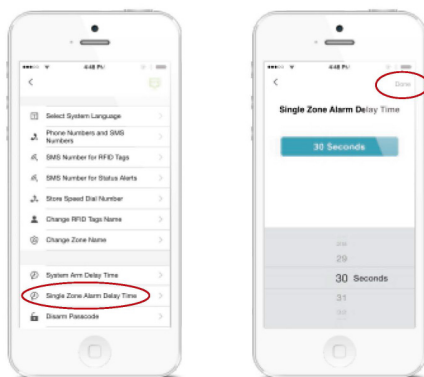
Bellow is the response message of the alarm system shown when texting '14' to the control panel. Copy the message and adjust the delay time for the single zone group as shown below.

Tiempo de retardo de alarma de zona única
(0-300 sec.).
30

Tiempo de retardo de alarma de zona única
(0-300 sec.).
15

Establecer el tiempo de retardo de zona única
con éxito

In the App:



Store SMS numbers for status alerts

The stored number can receive SMS in case of low battery, power failure or recovery. You can store the numbers by texting '16' to the control panel or by App.



Wireless siren arm/disarm tone

If you have a wireless siren with your system you can turn on or off the arm/disarm tone by texting '63701'= On or '63700'= Off.

Note: The default setting is off.

Delete accesories

Option1: SMS

You can delete the wireless sensors (door/windows contacts, PIR detectors) by texting "21" to the SIM card number in the control panel. You can delete the RFID tags by texting "22" to the SIM card number in the control panel.


You can delete the remote controls by texting "23" to the SIM card number in the control panel.


Option 2: App

You can delete the wireless sensors/ RFID tags/ remote controls from App.

Option 3: Control Panel

You can delete the sensors one by one from control panel. For example, if you want to delete zone 1 sensor:

1. Enter '1234' (or new disarm password);
2. Press [];

3. Enter '01';
4. Press [.

Restore system to default setting

Also called a 'hard reset'. This should also be performed when changing the SIM card.



0000

Long pressing tamper switch for 4 seconds and then quick pressing it 5 times in 3 seconds can also restore the control panel to default setting, and the control panel will beep twice.

SMS notification of tampering sensors

The stored numbers on page 20 will receive an SMS message when a tamper alarm condition occurs. The zone name will appear in the SMS along with the words 'tamper alarm'. This feature only applies to sensors with a built-in tamper switch.

Arm & Disarm by free phone call

Arming the alarm system can be done by calling the SIM card telephone number in the control panel. When you hear the dialling tone, hang up. You will be called back by the same number. Do not answer the call. The alarm will be armed.

Disarming the alarm system can be done by calling the SIM card telephone number. Hold on until the system disconnects by itself. The alarm system will not call you back and the alarm system will be disarmed.

IMPORTANT: To arm or disarm the alarm system, make sure voicemail is disabled on the SIM card of the alarm system.

FCC WARNING

This device complies with part 15 of the FCC Rules. Operation is subject to the following two conditions: (1) this device may not cause harmful interference, and (2) this device must accept any interference received, including interference that may cause undesired operation. Any changes or modifications not expressly approved by the party responsible for compliance

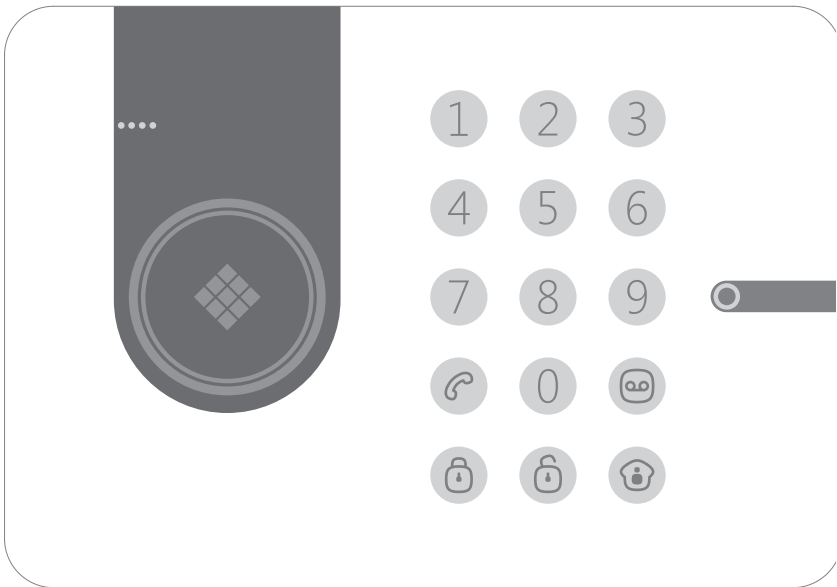
could void the user's authority to operate the equipment.

NOTE: This equipment has been tested and found to comply with the limits for a Class B digital device, pursuant to Part 15 of the FCC Rules. These limits are designed to provide reasonable protection against harmful interference in a residential installation. This equipment generates, uses and can radiate radio frequency energy and, if not installed and used in accordance with the instructions, may cause harmful interference to radio communications. However, there is no guarantee that interference will not occur in a particular installation. If this equipment does cause harmful interference to radio or television reception,

which can be determined by turning the equipment off and on, the user is encouraged to try to correct the interference by one or more of the following measures:

- Reorient or relocate the receiving antenna.
 - Increase the separation between the equipment and receiver.
 - Connect the equipment into an outlet on a circuit different from that to which the receiver is connected.
 - Consult the dealer or an experienced radio/TV technician for help.
- To maintain compliance with FCC's RF Exposure guidelines, This equipment should be installed and operated with minimum distance between 20cm the radiator your body: Use only the supplied antenna.

FCC ID: 2ADWUPSMMAA10NA





Distributed by:
Comercializadora Milenio S.A. de C.V.

© 2016 All Rights Reserved
MADE IN CHINA



Instantly recognizable. Instantly reassuring. The Polaroid Classic Border and Polaroid Color Spectrum logos let you know you've purchased a product that exemplifies the best qualities of our brand and that contribute to our rich heritage of quality and innovation.

Distribuido por: One Diamond Electronics, Inc. 1450 Frazee Road, Suite 414 San Diego, C.A. 92108

HECHO EN CHINA

Polaroid, Polaroid & Pixel, el Polaroid Classic Border logo y Polaroid Color Spectrum son marcas registradas de PLR IP Holdings, LLC, utilizada bajo licencia. Todas las demás marcas son propiedad de su respectivo propietario, que no tiene patrocinado, avalado ni aprobado este producto. PLR IP, LLC no hace fabricación de este producto o da la garantía del fabricante o de apoyo.

Polaroid, Polaroid & Pixel, Polaroid Classic Border Logo and Polaroid Color Spectrum are trademarks of PLR IP Holdings, LLC, used under license. All other trademarks are the property of the respective owner, who has not sponsored, endorsed or approved this product.

PLR IP Holdings, LLC does not manufacture this product or provide any Manufacturer's Warranty or support.

© 2016 All Rights Reserved

TM