
DMP-2000

MP3 PLAYER

hanzoom™ DMP

**Thank you very much for purchasing our product,
HANZOOM DMP-2000.
Before operating the unit,
please read this manual thoroughly.**

Table of Contents

1. Product Introduction

- Features
- Terms description
- Unit Contents
- Designations

2. Program Installation

- System requirements
- Preparations
- Download program
- Installation MMC Writer and Driver

3. How to play DMP-2000

- Copying music to Multimedia Card
- Deleting music from Multimedia Card
- Formatting Multimedia Card
- Listening to music file
- Power-on and Play
- Pause
- Forward
- Rewind
- Stop and Power-off
- Mode Selection

4. Troubleshooting

5. Customer Support

Product Introduction

Product Introduction

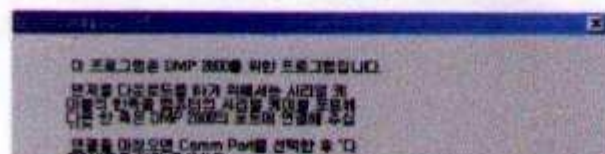
Program Installation

System Requirements

- Pentium 133(or higher), RAM 32M(or higher), 8XCD-ROM Drive (or higher), HDD 30MB(and more space), window 95/98

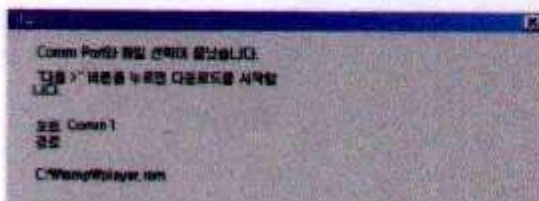
Program Installation

6) Select one of two Com Ports



Program Installation

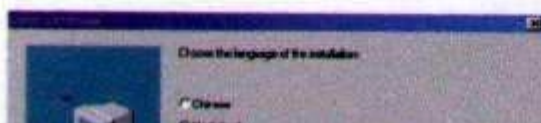
8) Click 'Next' button and download the file



Program Installation

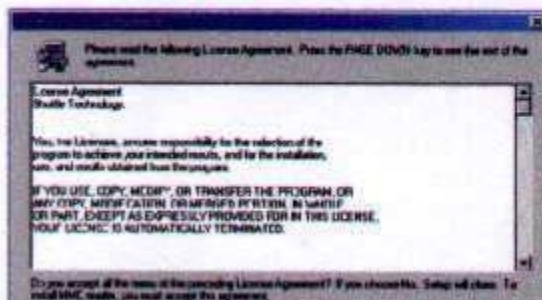
MMC Writer and Driver Installation

- 1) Connect a cable of MMC Writer to the printer port of computer
- 2) Execute MMC Writer setup.exe
- 3) Choose the language of the installation



Program Installation

- 5) If you press 'Yes' button in the License Agreement, installation automatically starts



Program Installation

- 7) Click the 'Next' button when information about setup appears



- 8) When installation was finished, 'ReadMe' file appears. If you don't want, click 'No' button. Installation is completed by

Program Installation

After Driver Installation

- 1) You can confirm the driver installation in the "Start Program-SCM Software"



- 2) You can also find driver installation at bottom right of Window's main screen

When Multimedia card was not inserted to the MMC Writer

Program Installation

- 5) When you insert MMC Card, one more driver called 'Movable Disk' appears in Explorer



How to play DMP-2000

Copying a music file to Multimedia card

- 1) Execute Explorer
- 2) Mobile Disk appears when you insert Multimedia Card to the Writer
- 3) After selecting a file to copy, select 'copy' clicking the right button of mouse and 'paste' it to the movable disk

Deleting the music file in Multimedia Card

- 1) Select the file and select 'delete' with the right button of mouse


Formatting Multimedia card

- 1) Select 'format' with the right button of mouse and after choose 'disk space', push 'yes' button

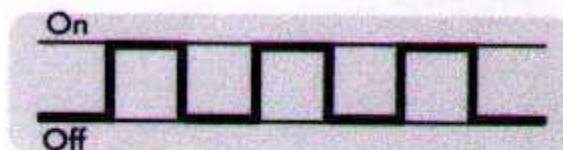
How to play DMP-2000

Listening to Music File

Power-on and playing a music

- 1) Insert Multimedia Card to the MMC slot
- 2) Power is on when you press Play  button
- 3) Music plays automatically approximately 4 seconds later

This time, it searches MP3 and WMA automatically
LED repeats on and off slowly at regular interval



(Information)

- In case you insert two Multimedia cards into slot A and slot B, sequent order is made according to its unique ID

(Note)

- If you pull out Multimedia card from DMP-2000 while being played, LED blinks fast and power supply is disconnected.

How to play DMP-2000

Listening Forthcoming Music

- 1) If you press FF (⏮) button , you can hear the next music
- 2) Pressing FF (⏮) button in the last music goes to the first one

Listening Previous Music

- 1) If you press REW (⏪) button, you can hear the previous music
- 2) Pressing REW (⏪) button in playing the first music starts from the beginning

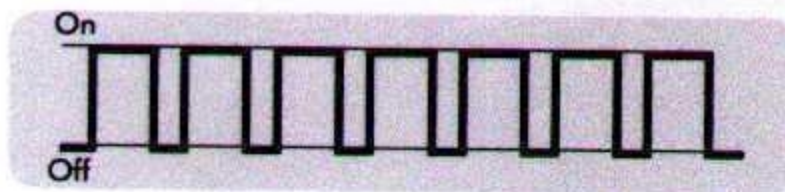
Repeat Mode

- 1) When you press and hold Play button for about 2 seconds during playing, repeat function starts working
In this case, you can listen to the same song repeatedly
- 2) To return to normal play from the repeat function, keep Play button pressed for about 2 seconds, LED blinks at high speed in four times a second

How to play DMP-2000

Intro Mode

- 1) To locate the desired music. Goes to the next music after playing about 8 seconds
- 2) Pressing FF(44) button over 2 seconds searches the music you want in the INTRO Mode
- 3) Press REW(33) button and return to the normal play. LED at high speed, but lower than in Repeat function



Stop and Power - Off

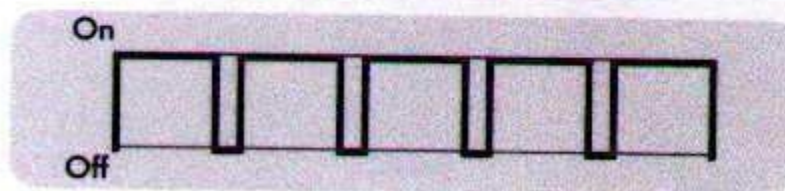
- 1) If you press stop button for about 1 second, it stops playing and turned off

Mode Selection

- 1) Usually starts in a normal mode at the beginning
- 2) Press mode selection button for the emphasis mode
- 3) One more press in emphasis mode adds 3S mode
- 4) One more press in 3) condition turns to the 3S mode
- 5) Returns to a normal mode with one more press in 3S mode

How to play DMP-2000

LED blinks at long intervals in on condition,
but blinks at short intervals in off condition



Volume Control

1) Volume Up

- Press (+)button shortly to increase one level
- Press (+)button long for a continuous increase

2) Volume Down

- Press (-)button shortly to decrease one level
- Press (-)button long for a continuous decrease

3S(Spectral Surround System) Sound Expand Effect

3S is a fully immersive dimensional sound through dividing audio signal wave into high tone of spatial field, middle tone of voice field and low tone which confines powerful voice. It has a stereophonic sound as listening to several speakers

How to play DMP-2000

Local Repeat Function

1) Decide a starting point to repeat

While music being played, press 3S mode button over 2 seconds where you would like to repeat. LED is keep turned on which used to blink at regular intervals

2) Decide an ending point to repeat

If you press 3S mode button where you would like to, ending point is fixed and LED blinks at high speed. Music which is being played keep repeating from the starting point to the ending point

3) Releasing Local Repeat Function

Press REW button or FF button to release the function

How to play DMP-2000

File Copying Function

(When two Multimedia cards are inserted into the slots, copy the song from Multimedia Card A while its playing to Card B)

Copying Process

When the song you want (in case of Multimedia card A) is being played, press 'pause' button (Play Button) and press 3S mode button over 2 seconds that copies the song of Multimedia Card A to Card B. After copying file was completed, previous song before copying plays automatically.

Note) In case of 1Mbyte of File size, it takes approximately 30 seconds to copy

TROUBLE SHOOTING

Power LED is not turned on when pressing PLAY button

- check if the battery/charging battery was loaded
 - Insert a battery with right polar
- check if the battery was fully discharged
 - Insert a new battery with right polar

Power LED is on, but play does not start

- check if the battery/charging battery was left
 - Try again with a new battery or recharged one)

Play does not start, LED light goes off directly

- check if Multimedia Card was inserted into slot properly
 - Insert Multimedia Card firmly)

Plays but can not hear the song

- check the volume that could be in the lowest level
 - Press one level or more pressing (+)button until enough to hear
- check the contents of Multimedia Card
 - Copy the music of MP3 or WMA to the Multimedia Card using Multimedia Card

Skipping of sound during playing

- check if the battery/charging battery was left
 - This happens when the battery was almost discharged, change with new one and try again

TROUBLE SHOOTING

Mode selection (repeat/local repeat function, searching mode, 3S mode) does not work

- check if the button was firmly pressed
→ Press the button as enough as suggested time)

When downloading firmware to the player, it doesn't work

- Check connections between serial cable and Comm port in rear part of computer
- Turn the program off and restart it
- Change the Comm Port Number

MAINTENANCE

Keep in mind the following instructions to maintain and use hanzoom DMP-2000

- 1. Do not expose to mechanical vibration or shock**
Hanzoom DMP was specially designed as shock absorbing but should any solid object or liquid fall may harm the player
- 2. Do not expose the player to rain or moisture**
In case the player has moisture in it, it influences inner parts and may be damaged
In case like this, wipe it with a dry cloth and refer to service to the Openers service center immediately
- 3. Do not place the player in a location near a heat source, excessive moisture and strong magnetic materials**

SPECIFICATIONS

- Processor: Cirrus Embedded Processor (with ARM Core)
- Memory: Multimedia Card (MMC) 32Mb(extension possible)
- Operating Power: 1.5V (AAA Size rechargeable Ni-MH battery)
- Continuous Operating Time: About 2.5 hours
- Indicator: LED red light
- File Downloading Speed: 130Kbyte/sec
- Earphone Output: MAX 2.5Mw/CH
- Wave specification: 20Hz-20KHz
- Dimension: 72.0mm(W) X 53.2(H) X 30.5(D)
- Weight:

INFORMATION TO THE USER

This equipment has been tested and found to comply with the limits for a Class B digital device, pursuant to part 15 of

