

Table of Contents

Product Features / Terminology

Unit Contents

Designations

Operation

- Opening the cover / Attaching a battery

- Inserting Multimedia Card (option)

- Connecting DMP-2000L to PC for download MP3 File

Program Installation

- System Requirements

- Connect USB cable to PC

- Installation of USB Driver

- Installation of MP3 music file downloading Program

- Download music files from PC to DMP-2000L

- Upload music files from DMP-2000L to PC

- Delete music files from DMP-2000L

- Format DMP-2000L

- Uninstallation of program

How to play DMP-2000L

- Power-on and Play

- Pause / Forward / Rewind

- Repeat Mode

- Stop and Power-off / Mode Selection / Volume Control

Troubleshooting

Cautions / Specifications

The MP3 resources on the internet

Approval

Customer Support

Features

DMP which stands for Digital Music Player has a CD quality sound supporting MP3 file for the next new generation.

Terminology

MP3 (MPEG1 Audio Layer3)

MP3 is a standard audio file format that uses high technology to compress audio data 10 times or more than original but still has near- CD quality.

Unit Contents



DMP-2000L Player



Installation
Program(CD)



USB Cable



Earphone



Necklace
String



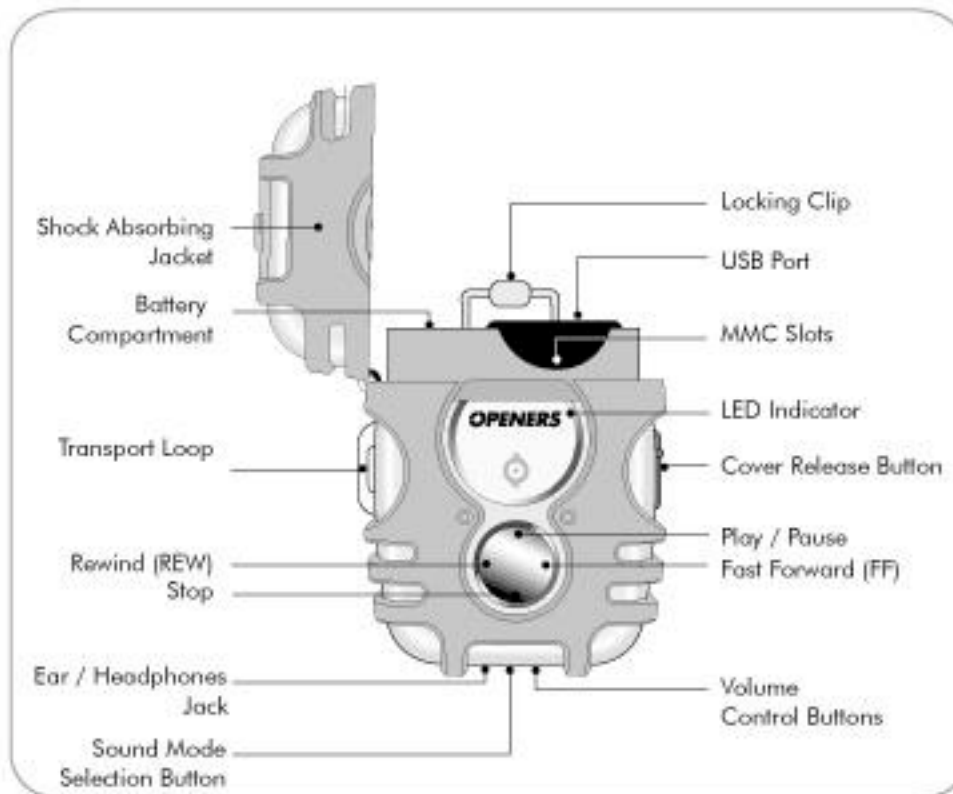
Belt Clip



Instructions
Manual

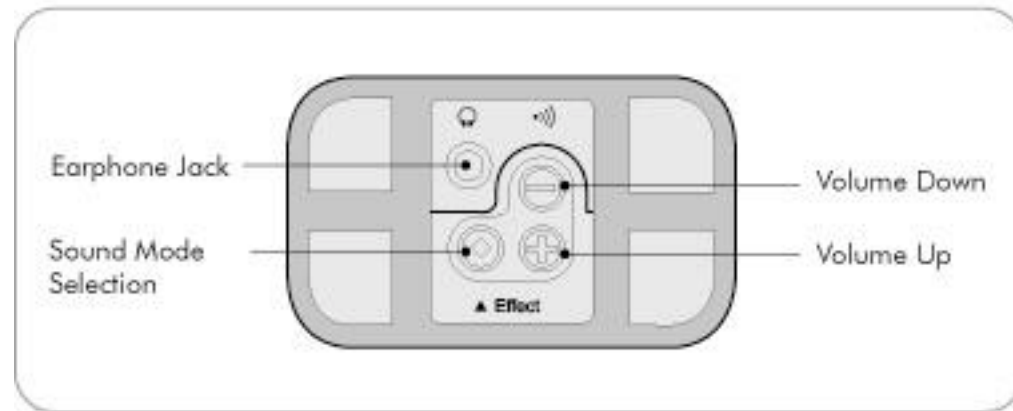
Designations

► Front

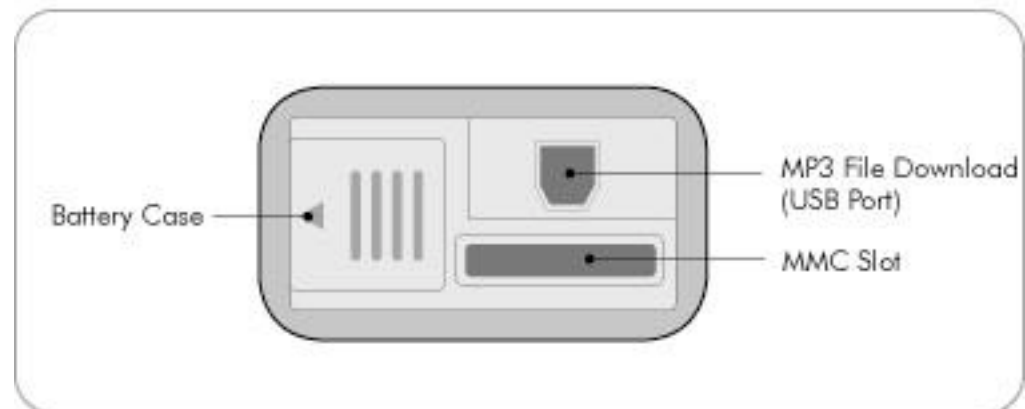


Designations

► Bottom



► Inner Parts



Operation

► Opening the cover



- To open the lid, raise the locking clip to the back first and push the cover release button to the right.

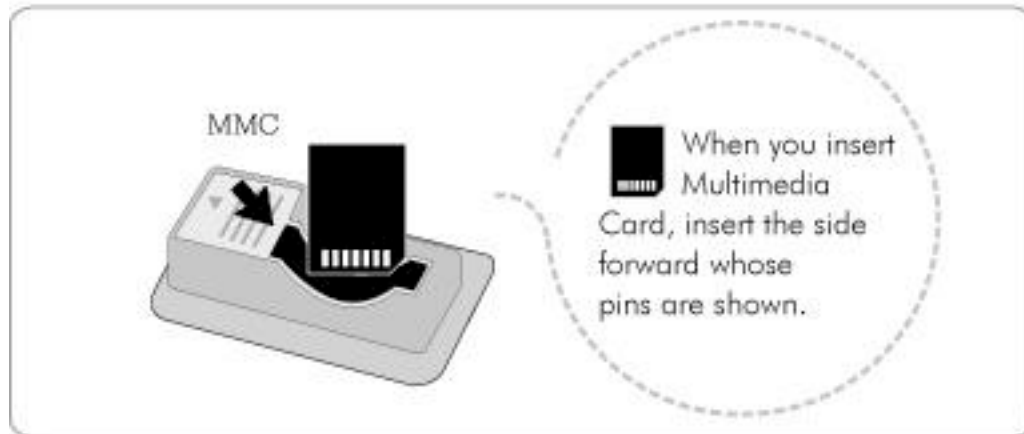
► Attaching a battery



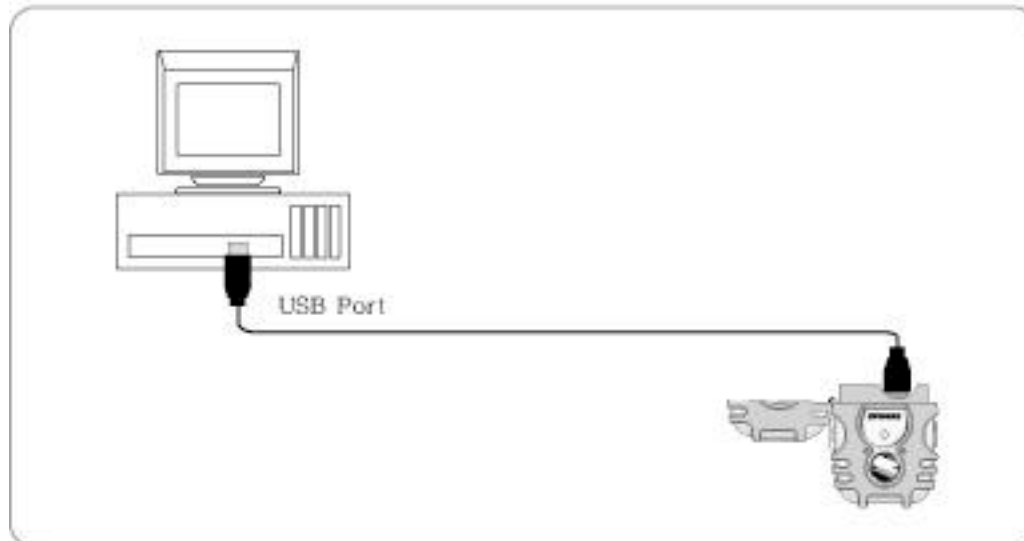
After opening the battery lid, insert one 'AAA' battery with correct polarity.



► Inserting Multimedia Card (Options)



⊙ Connecting DMP-2000L to PC for download MP3 files.



Program Installation

System Requirements

Pentium 200 (or higher), RAM 32MB (or higher), 8XCD-ROM Drive (or higher), HDD 10MB (and more space), USB Port, Window 95/98/2000

Installation of USB Cable



1) Plug USB cable into USB port of PC.

Installation of USB Driver



2) When "Add New Hardware Wizard" window appears, press "Next>" button.



3) Select "Search for the best driver for you device (Recommended)" item, and press "Next>" button.

4) Searching suitable USB driver.



Insert DMP-2000L installation program CD into CD-ROM drive of your PC. Select "CD-ROM drive" and press "Next>" button.



Now suitable USB driver was searched. Press "Next>" button.



Press "Finish" button to complete Installation of USB driver.
Caution: When MS-Windows can not recognize DMP-2000L, check if USB cable is properly plugged.

Installation of MP3 music file downloading Program



1) Insert DMP-2000L installation CD into CD-ROM Drive of your PC.

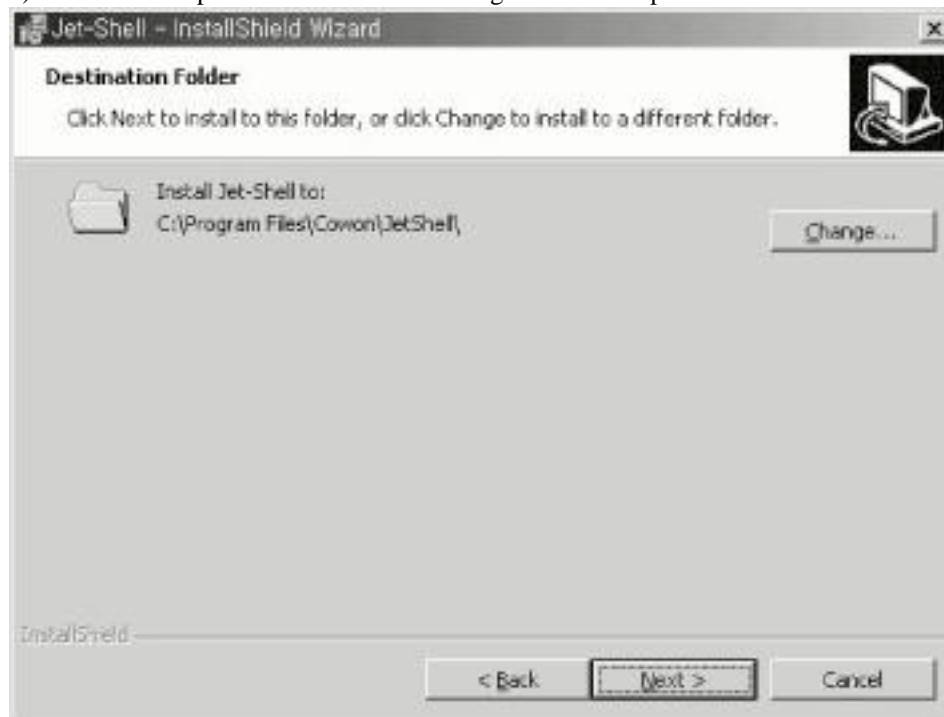
2) Execute "Setup.exe".

Note : Depending on your system configuration, the system must be restarted.

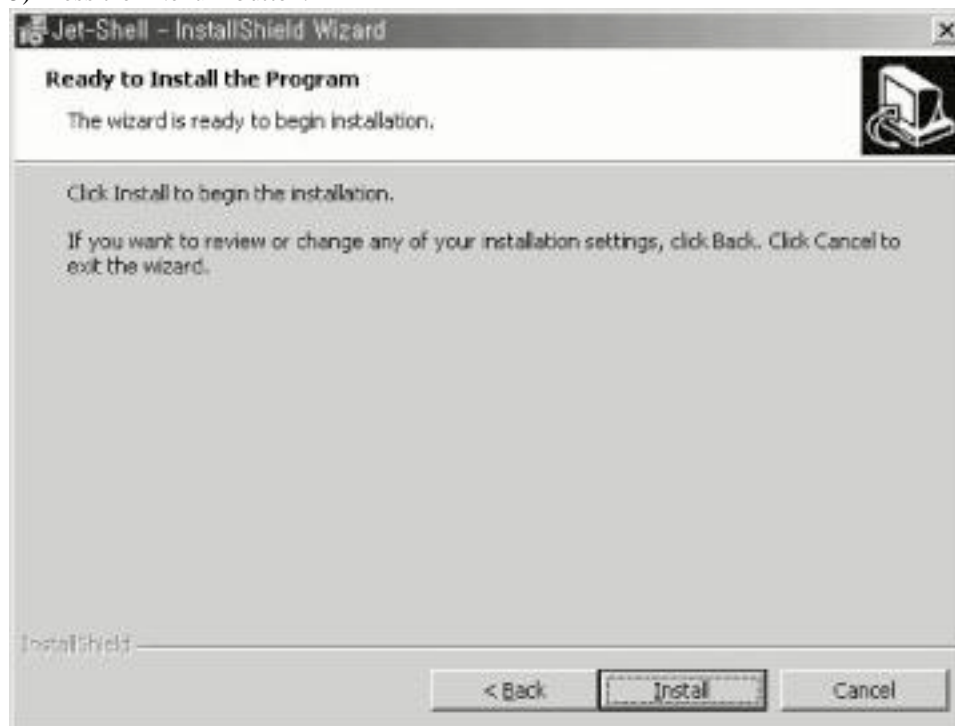
3) Press the "Next>" button.



4) Choose "I accept the terms in the license agreement" and press the "Next>" button.



5) Press the "Next>" button.



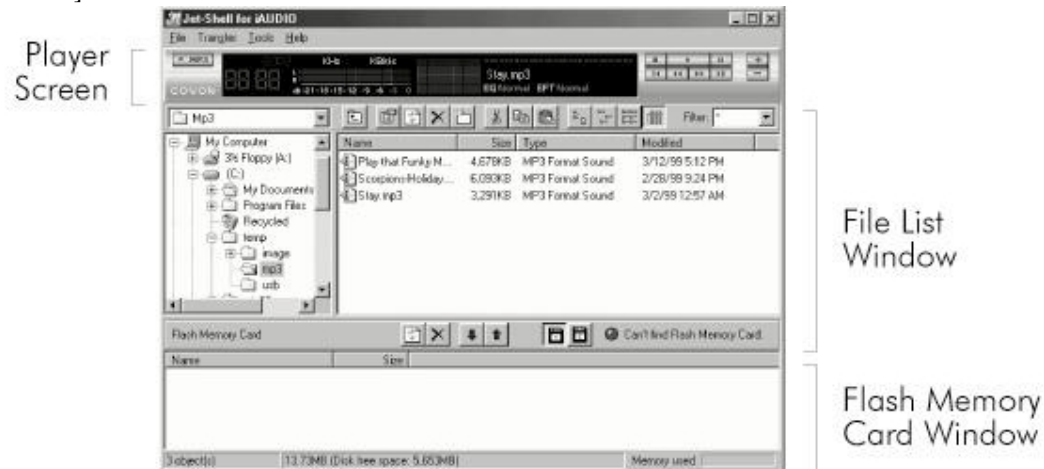
5) Press the "Install" button.



6) Installation is completed by clicking "Finish" button.

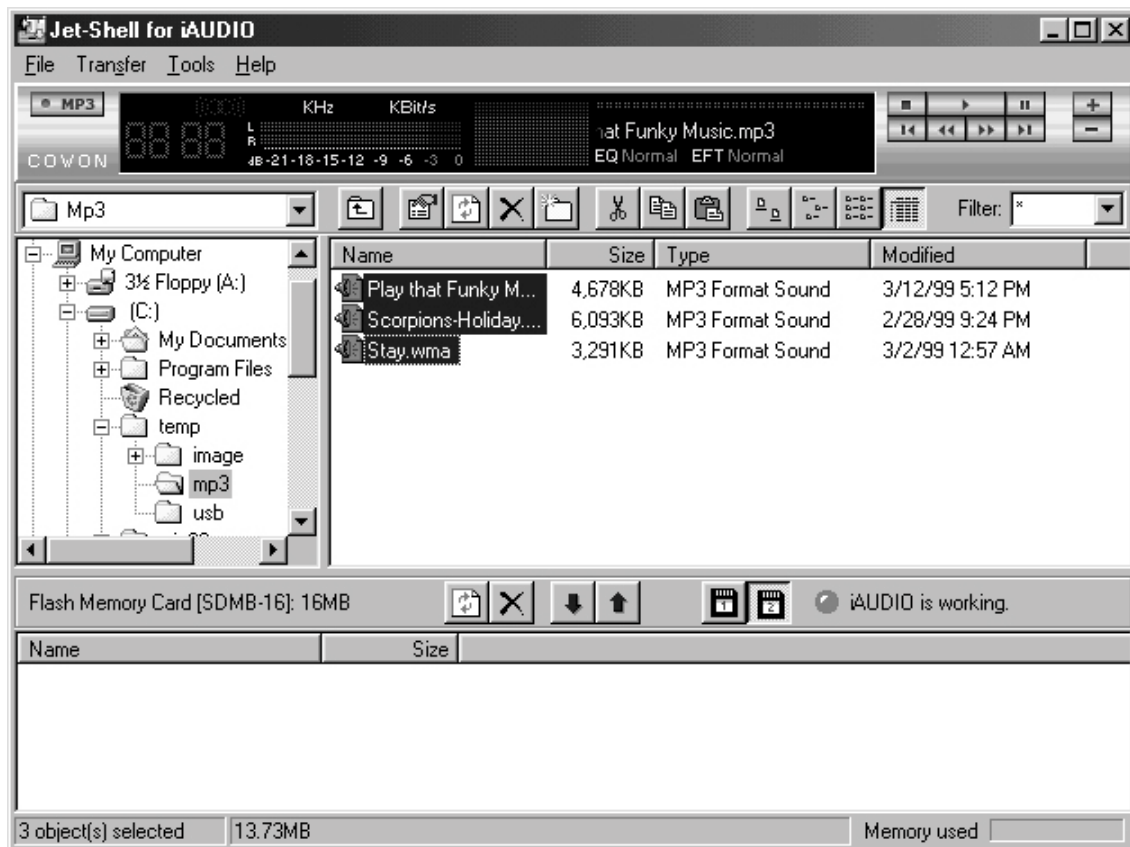
Execution of Program

Double-click the program icon (Jetshell) on your desktop, or select [start]-[program]-[cowon]-[Jet-shell]-[Jet-shell].





Download music files from PC to MP3 Player DMP2000L

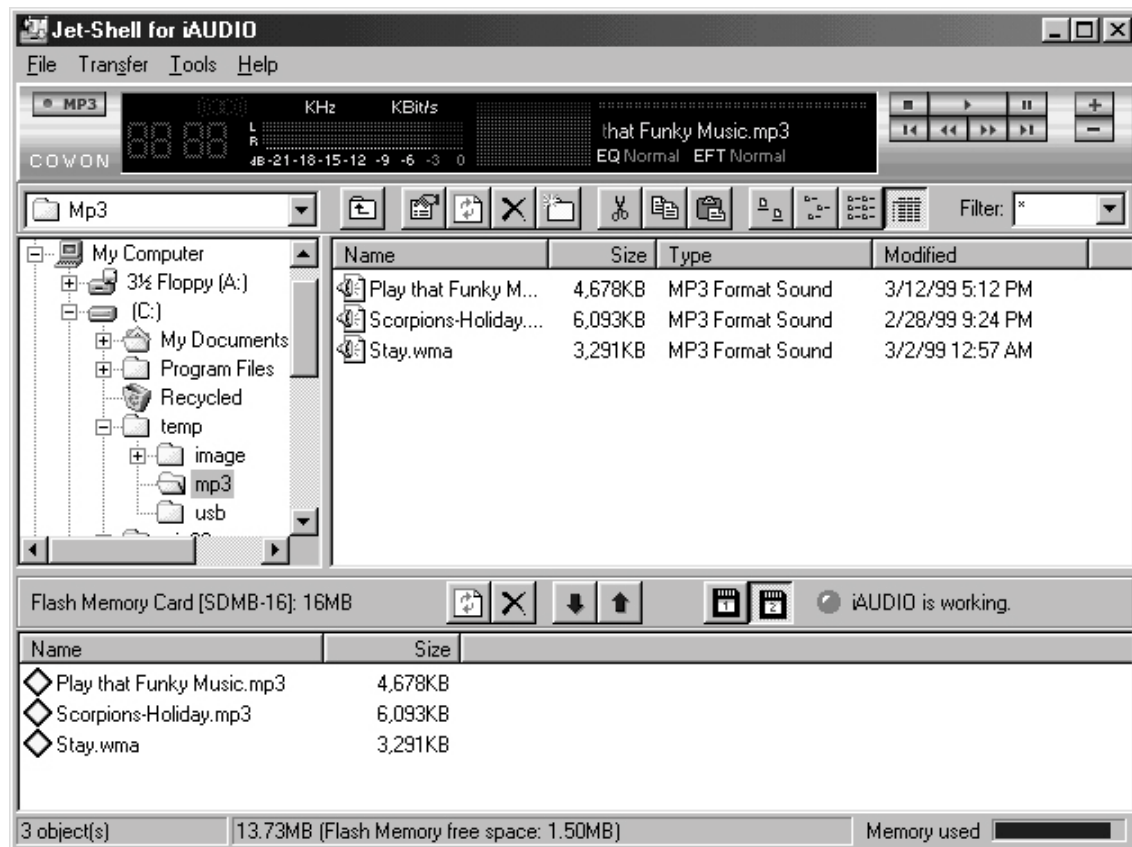
- 1) Plug the USB cable into USB port of your DMP-2000L.
- 2) Execute the program.



3) Select the MP3 music files in "File List Window".

4) Select the target.

The "Flash Memory Card 1" icon  must be selected if you want download into the flash memory of your DMP-2000L. (If you select the "Flash Memory Card 2" icon  the MP3 music files will be downloaded into MMC)



5) Press "  " button.

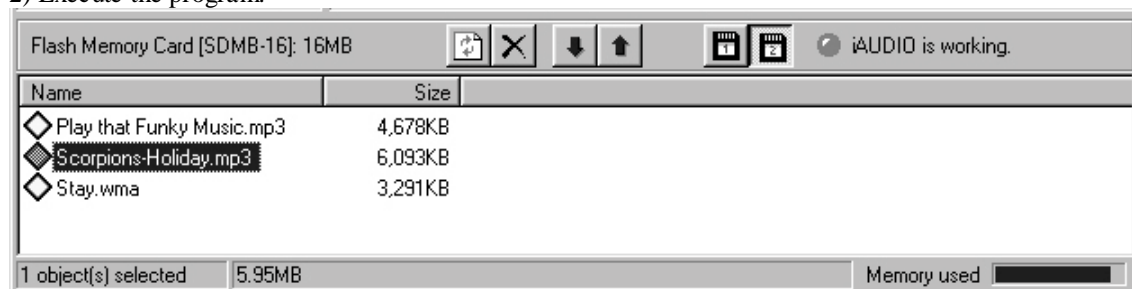
Upload files from DMP-2000L to PC

- 1) Plug the USB cable into USB port of your DMP-2000L.
- 2) Execute the program.
- 3) Select the files excluding MP3 extension file in "Flash Memory Card Window".

4) Press "  " button.

Delete music files from DMP-2000L

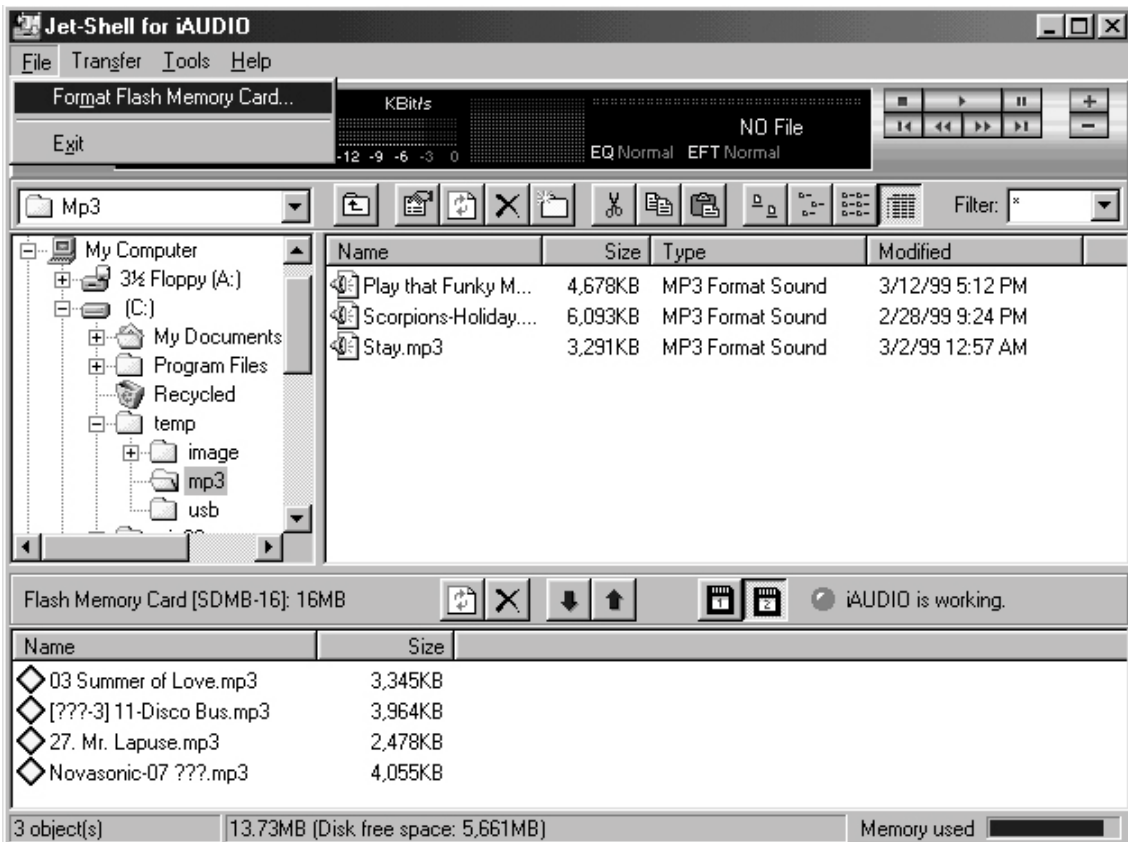
- 1) Plug the USB cable into USB port of your DMP-2000L.
- 2) Execute the program.



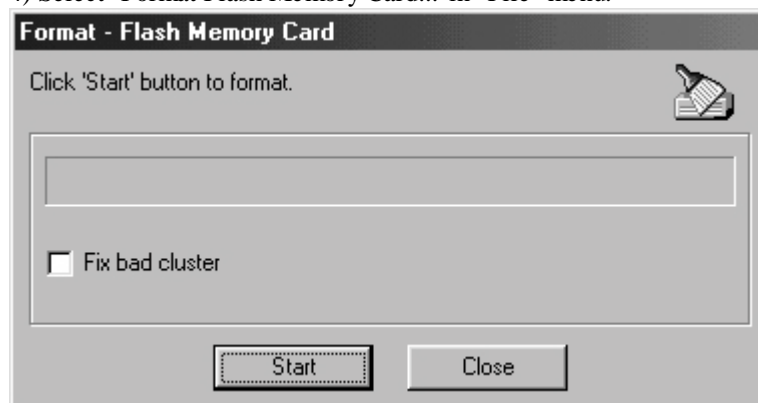
3) Select the MP3 music files in "Flash Memory Card Window".

4) Press "  " button

Format DMP-2000L



- 1) Plug the USB cable into USB port of your DMP-2000L.
- 2) Execute the program.
- 3) Select the target.(Flash Memory or MMC)
- 4) Select "Format Flash Memory Card..." in "File" menu.



- 5) When "Format-Flash Memory Card" window appears, press "Start" button.

Note : Using 'Fix bad cluster' feature, you can detect and fix bad cluster while proceeding formatting. This will take a quite long time. Usually you are recommended to use Fast Format feature since you will rarely encounter bad cluster in flash memory cards. If you face transfer fail error in same position repeatedly, it is assumed that you have bad cluster in flash memory card. Choosing 'Fix bad cluster' option is recommended in this case.

Uninstallation of program

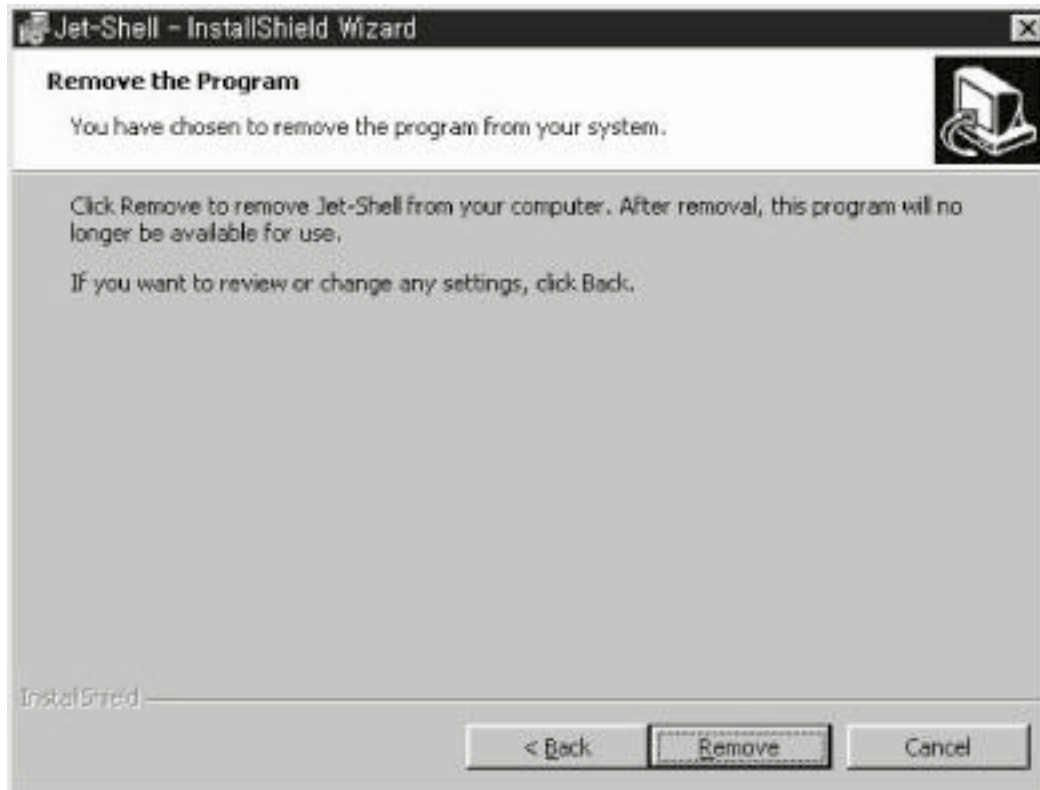
- 1) Execute [Start]-[Settings]-[Control Panel].
- 2) Double click "Add / Remove Program".
- 3) Select "Jet-Shell" and press "Add / Remove" button.



4) Press "Next>" button.



5) Select "Remove" and press "Next>" button.



6) Press "Remove" button.



7) Press "Finish" button.
Now the program is properly uninstalled.

How to play DMP-2000L

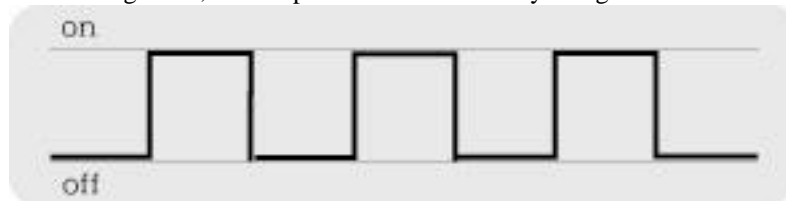
Power-on and playing a music

- 1) Power is on when you press Play button during 1 second.
- 3) Music is played automatically approximately 1 second later.

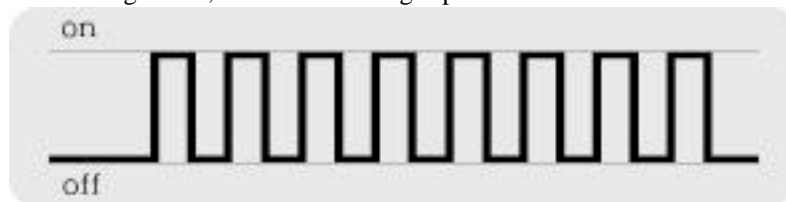


When using MMC, inserting card before power up.

When using Flash, LED repeats on and off slowly at regular interval.



When using MMC, LED blinks at high speed.



Pause

- 1) Press Play button during playing for a pause function, (LED on).
- 2) Press Play button again to release pause function.



If you don't press any button for 3 minutes in 'pause' condition, power is disconnected to protect the battery.

Listening Forthcoming Music

- 1) If you press FF button , you can hear the next music.
- 2) Pressing FF button in the last music goes to the first.

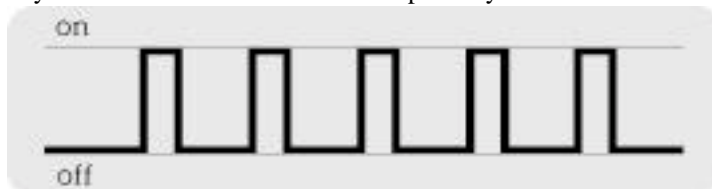


Listening Previous Music

- 1) When you press REW button, it goes back to previous music.
 Note : If you press REW button within three seconds after playing, you can go to the previous music.
 If you press it after three or more seconds, it moves to the beginning part of the music.
- 2) Pressing REW button while the first music's playing, it does not go to the last music, but just starts from the beginning part of the first music.

Repeat Mode

- 1) When you press and hold Play button for about 1 seconds during playing, repeat function starts working. In this time, LED blinks at short intervals in on condition, blink at long intervals in off condition. In this case, you can listen to the same music repeatedly.



- 2) To return to normal play from the repeat function, keep Play button pressed for about 1 second.

Stop and Power off

- If you press Stop button for about 1 second, it stops playing and turned off.

Sound Mode Selection

- Press Sound Mode Selection button to choose one of 7 preset digital equalized Sound mode.

Volume Control

1) Volume Up

- Press + button shortly to increase one level.
- Press + button long for a continuous increase.

2) Volume Down

- Press - button shortly to decrease one level.
- Press - button long for a continuous decrease.

Troubleshooting

1) Power was not disconnected when pressing stop button.

- Check if stop button was pressed firmly.

2) Power LED is not turned on when pressing play button.

Check if the battery / charging battery was loaded.

- Insert a battery with right polarity.

Check if the battery was fully discharged.

- Insert a new battery with right polarity.

3) Power LED is on, but play does not start.

Check if the battery / charging battery was left.

- Try again with a new battery or recharged one.

4) Play does not start, LED light goes off directly.

Check if MP3 files exists in Flash memory or MMC

5) Plays but can not hear the song.

Check the volume that could be in the lowest level.

- Press one level or more pressing (+) button until enough to hear.

Check the contents of Flash / Multimedia Card.

- Copy the music of MP3 to the Flash / Multimedia Card.

6) Sound Mode selection does not work.

Check if the button was firmly pressed.

- Press the button as enough as suggested time.

Cautions

Keep in mind the following instructions to maintain and use DMP-2000L

DMP-2000L perceives electronic or physical shock as something wrong with current song and plays next song immediately to protect stop caused from malfunction.

Do not expose to mechanical vibration or shock.

- DMP-2000L was specially designed as shock absorbing but any solid object or liquid fall may harm the player.

Do not expose DMP-2000L to rain or moisture.

- In case the player has moisture in it, it influences inner parts and may be damaged.
- In case like this, wipe it with a dry cloth and refer to service to

the Openers service center immediately.

Do not place DMP-2000L in a location near a heat source and strong magnetic materials.

Specifications

Processor : PIC17LC756A

Memory : 32MBytes Flash / MMC (option)

Operating Power : 1.5V (AAA Size)

Continuous Operating Time : About 5 hours

Indicator : LED red light

File Downloading Speed : Flash (170KBytes/sec),
MMC (130KBytes/sec)

Earphone Output : 5mW

Wave Specification : 20Hz-20KHz

Dimension : 72.0mm(W) X 53.2(H) X 30.5(D)

The MP3 resource on the Internet

URL

<http://www.m4you.com> <http://www.audiofind.com>

<http://mp3.now.com> <http://www.allmp3.co.kr/>

<http://mp3.lycos.com> <http://www.mp3.com/>

The connections depend on the conditions of the sites.

Approval



Information to the user

This equipment has been tested and found to comply with the limits for a Class B digital device pursuant to part 15 of the FCC Rules. These limits are designed to provide reasonable protection against harmful interference in a residential installation. This equipment generates, uses and can radiate radio frequency energy and, if not installed and used in accordance with the instructions, may cause harmful interference to radio communications. However, there is no guarantee that interference will not occur in a particular installation. If this equipment does cause harmful interference to radio or television reception, which can be determined by turning the equipment off and on, the user is encouraged to try to correct the interference by one or more of the following

measures:

- Reorient or relocate the receiving antenna.
- Increase the separation between the equipment and receiver.
- Connect the equipment into an outlet on a circuit different from that to which the receiver is connected.
- Consult the dealer or an experienced radio/TV technician for help.

Warning

Changes or modifications not expressly approved by the party responsible

for compliance could void the user's authority to operate the equipment.



This is a Class B product based on the standard of Voluntary Control Council for interference from Information Technology Equipment (VCCI)
If this is used near a radio or television receiver in a domestic enviroment, it may cause radio interfernce Install and use the eqipment according to the instruction manual.

Customer Support

Openers Co., Ltd. Service Center

Address: 302-281 2F Sungji BD. 499 Wolpyung1-Dong,
Seo-Gu, Daejeon, Korea

Tel: +82-42-487-1117

Fax: +82-42-487-9229

URL: <http://www.openers.co.kr>

E-mail: openers@openers.co.kr