

OHIO STEEL INDUSTRIES

PROFESSIONAL GRADE



50SWP26

26 cu. ft. LAWN SWEEPER

Patent Pending



**READ AND FOLLOW ALL SAFETY RULES AND OPERATING
INSTRUCTIONS BEFORE USING THIS EQUIPMENT**

Before using your sweeper

- Make sure brushes are clean and free of any debris.
- Visually inspect sweeper for obvious damage.
- Use supplied hairpin cotter with hitch pin provided.
- Remove foreign objects from yard before using sweeper.

Bag height and brush adjustment

- Adjust clevis up or down to make sure that the bag clears the ground when attached to tractor.
- Brushes set too low for conditions will cause unnecessary wear. For best performance operate sweeper with brushes 1/2" down into the grass.
- When sweeping heavy or wet materials start with a higher setting, lowering with each pass.
- To adjust the height of the brushes, remove clevis pin and move lever forward or backward to achieve desired brush height. Insert clevis pin and lock in place with hairpin cotter.

Using your sweeper

- For best results, use sweeper when conditions are dry.
- Use caution when backing, jackknifing lawn sweeper can cause damage to the unit.
- Do not over fill the sweeper hopper.
- Do not fasten the rope to any part of your body.
- Do not fasten the rope to any clothing.
- Do not hold onto rope while pulling the sweeper.
- Always secure the rope to the tractor to ensure rope will not get tangled in wheels or brushes.
- The faster the tractors speed the further the material is thrown into the hopper. Operate at a speed that will throw material to the back of the hopper.
- Depending on conditions it may be necessary to adjust sweeping speed to achieve best results.

Dumping the sweeper

- If desired, the sweeper can be dumped from the tractor by pulling the rope forward.
- Sweeper can also be dumped by grasping hopper frame and swinging up, away from hopper.
- Always dump contents of hopper after each use.

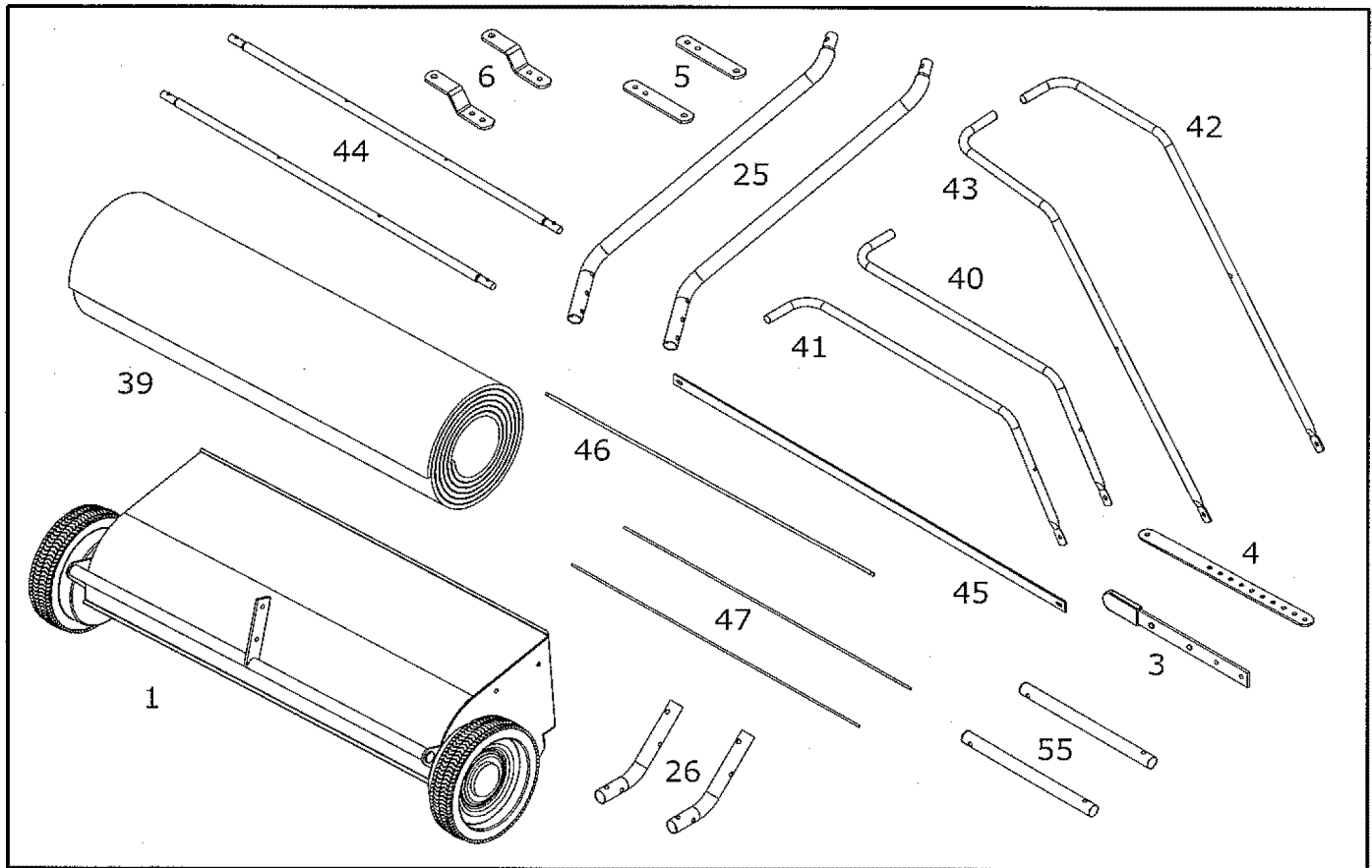
Storing the sweeper

- Before storing, clean both the sweeper and hopper bag to prevent rust to steel parts and mildew to cloth parts.
- Store sweeper away from excessive heat to prevent damage to sweeper brushes and hopper bag.
- To remove the hopper bag, pull the two clevis pins from the hopper bag tubes and slide out.
- Hopper bag can be collapsed for storage by removing the rear hopper support rods and folding frame down.
- Do not store unit on brushes, permanent damage could occur.

Maintenance

- To increase the life of the sweeper, clean after each use.
- Inspect sweeper for worn or damaged parts after each use.
- Inspect and remove any materials that may have wrapped around the brushes or the ends of the brush axle.
- Should rust appear on sweeper, sand area and paint with an enamel paint.
- Periodically check all fasteners for tightness.

Carton Contents



REF.	QTY.	DESCRIPTION	REF.	QTY.	DESCRIPTION
1	1	SWEeper ASSEMBLY	43	1	FRAME TOP RIGHT
3	1	LEVER HANDLE	44	2	FRAME CENTER
4	1	HEIGHT ADJ PLATE	45	1	HOPPER BAG BAR
5	2	CLEVIS PLATE FLAT	46	1	PIVOT ROD
6	2	CLEVIS PLATE BENT	47	2	REAR BAG SUPPORT ROD
39	1	HOPPER BAG	55	2	HOPPER CONNECT TUBE
40	1	FRAME BOTTOM LEFT	25	2	HITCH TUBE
41	1	FRAME BOTTOM RIGHT	26	2	HITCH MOUNT TUBE
42	1	FRAME TOP LEFT			

Tools Suggested for Assembly

- 1/2" open end wrenches and/or sockets.
- 9/16" open end wrenches and/or sockets.
- Adjustable wrench or pliers.

Safety Instruction

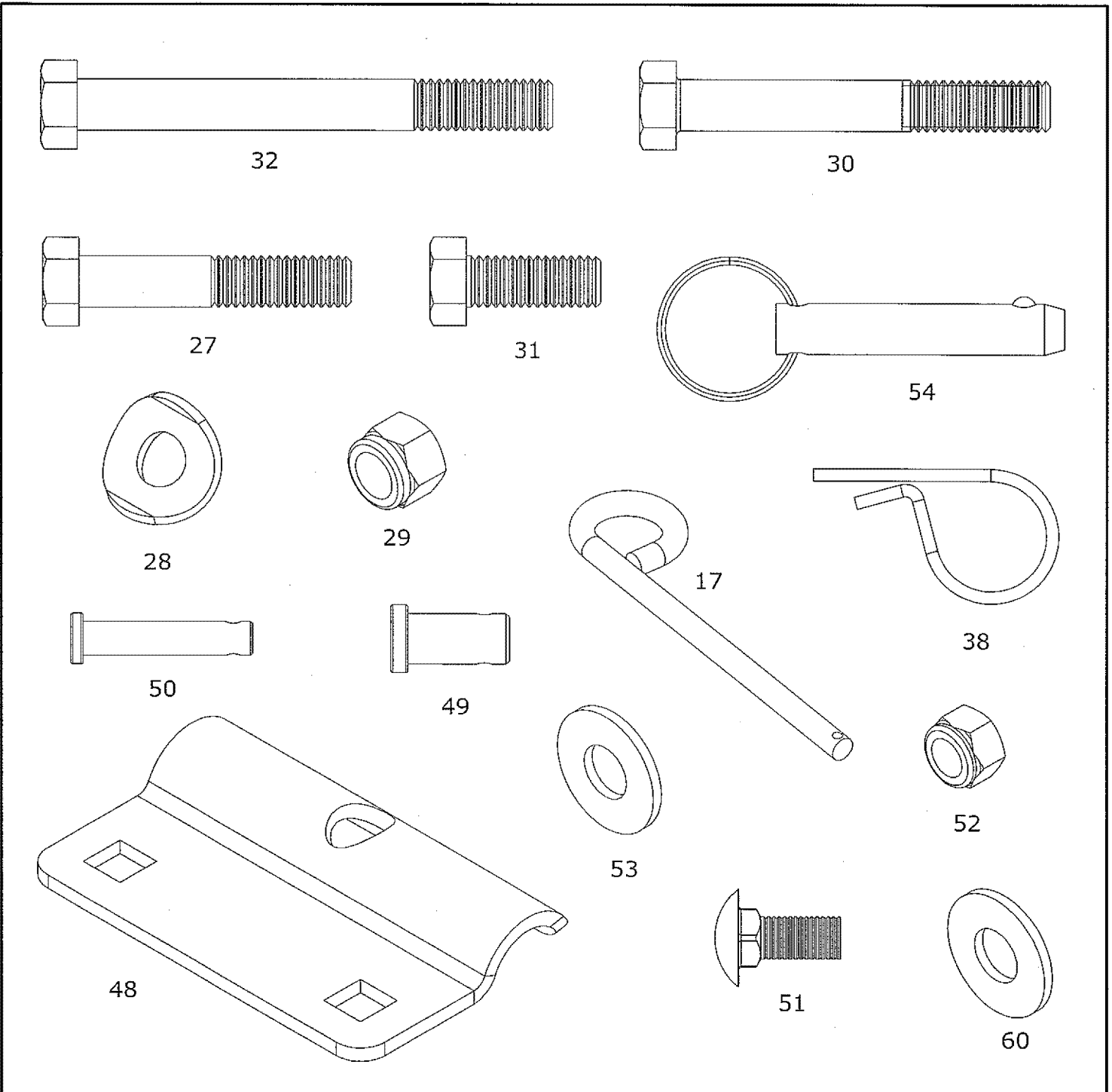
Read tractor and lawn sweeper instruction manuals and know how to properly operate equipment before using this attachment.

Do not carry passengers on sweeper.

Never exceed load capacity of hopper.
 Never attach hopper rope to any part of your body or clothing.
 Never hold rope while towing lawn sweeper.

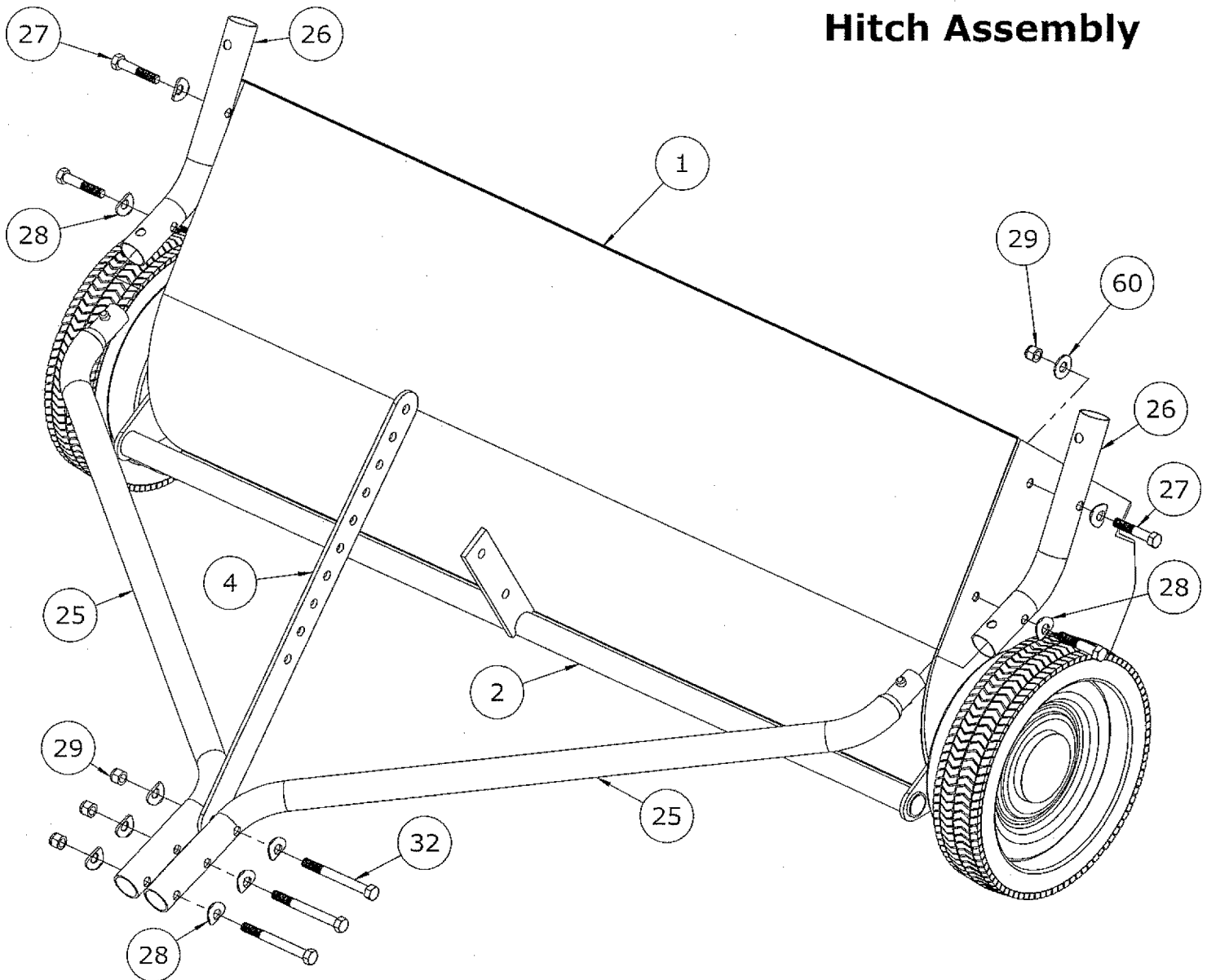
Always keep rope away from brushes and all rotating parts.
 When operating on slopes use lowest ground speed.
 Vehicle braking and stability may be affected with the addition of the lawn sweeper, especially when traveling down a slope.

Hardware Contents



REF.	QTY.	DESCRIPTION	REF.	QTY.	DESCRIPTION
32	3	3/8"-16 X 3-1/2" HEX BOLT	49	2	3/8" X 1/2" CLEVIS PIN
30	2	3/8"-16 X 2-3/4" HEX BOLT	50	2	3/8" X 1-1/4" CLEVIS PIN
27	4	3/8"-16 X 2" HEX BOLT	53	2	3/8" USS FLAT WASHER
31	2	3/8"-16 X 1" HEX BOLT	52	4	5/16"-18 NYLON LOCKNUT
54	2	3/8" RING GRIP PIN	48	4	PIVOT ROD PLATE
28	10	3/8" USS CURVED WASHER	51	4	5/16"-18 X 3/4" CARRIAGE
29	11	3/8"-16 NYLON LOCKNUT	57	1	NYLON ROPE (NOT SHOWN)
38	8	HAIR PIN COTTER	60	4	3/8" USS FLAT WASHER-BLACK
17	1	HITCH PIN LONG	NOTE: Standard Hardware items can be bought locally.		

Hitch Assembly



NOTE: MAKE SURE HEIGHT ADJUSTMENT PLATE (4) IS ABOVE HEIGHT ADJUSTMENT TUBE (2) WHEN ASSEMBLING.

Step 1.

Attach hitch mount tubes (26) to sweeper assembly (1) using 3/8"-16 x 2" hex bolts (27) and curved washers (28). Secure with flat washers (60) and nylon lock nuts (29).

Step 2.

Add hitch tubes (25) to the hitch mount tubes (26) by pressing button and sliding into position.
NOTE: TO REMOVE HITCH ASSEMBLY, MAKE SURE SWEEPER IS IN HIGHEST POSITION TO BE ABLE TO DEPRESS BOTH SNAP BUTTONS.

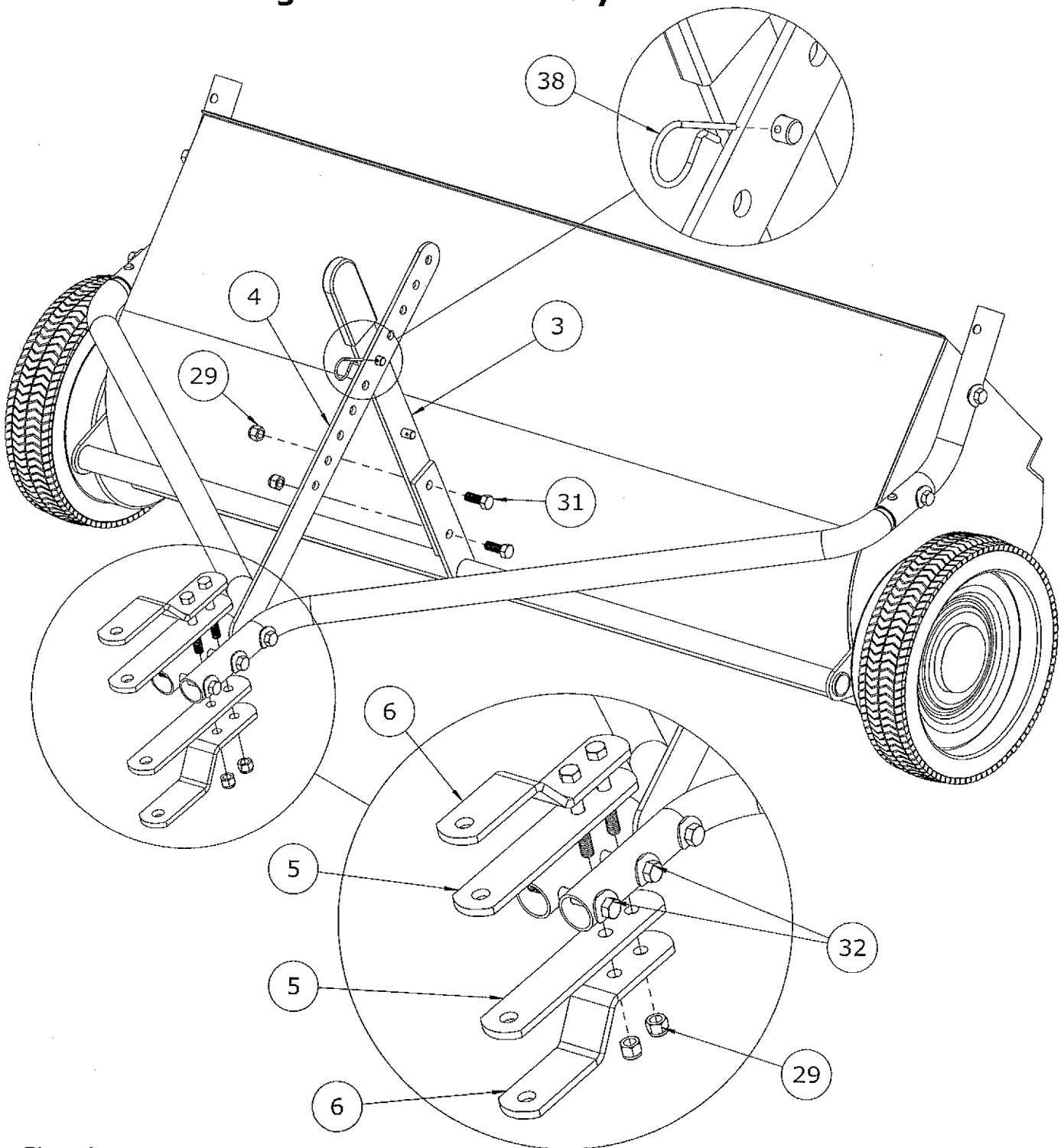
Step 3.

Insert two 3/8" x 3-1/2" hex bolts (32) with curved washers (28) into front two holes of hitch tubes (25). Secure with curved washer (28) and nylon lock nut (29).
NOTE: DO NOT TIGHTEN UNTIL CLEVIS BARS ARE INSTALLED.

Step 4.

Add height adjustment plate (4) between hitch tubes and insert one 3/8"-16 x 3-1/2" hex bolt (32) with curved washer (28). Secure with curved washer (28) and nylon lock nut (29).

Clevis and Height Lever Assembly



Step 4.

Attach clevis pieces (5 & 6) as shown in the detail view making sure to insert clevis bolts (30) between hitch bolts (32) as shown.

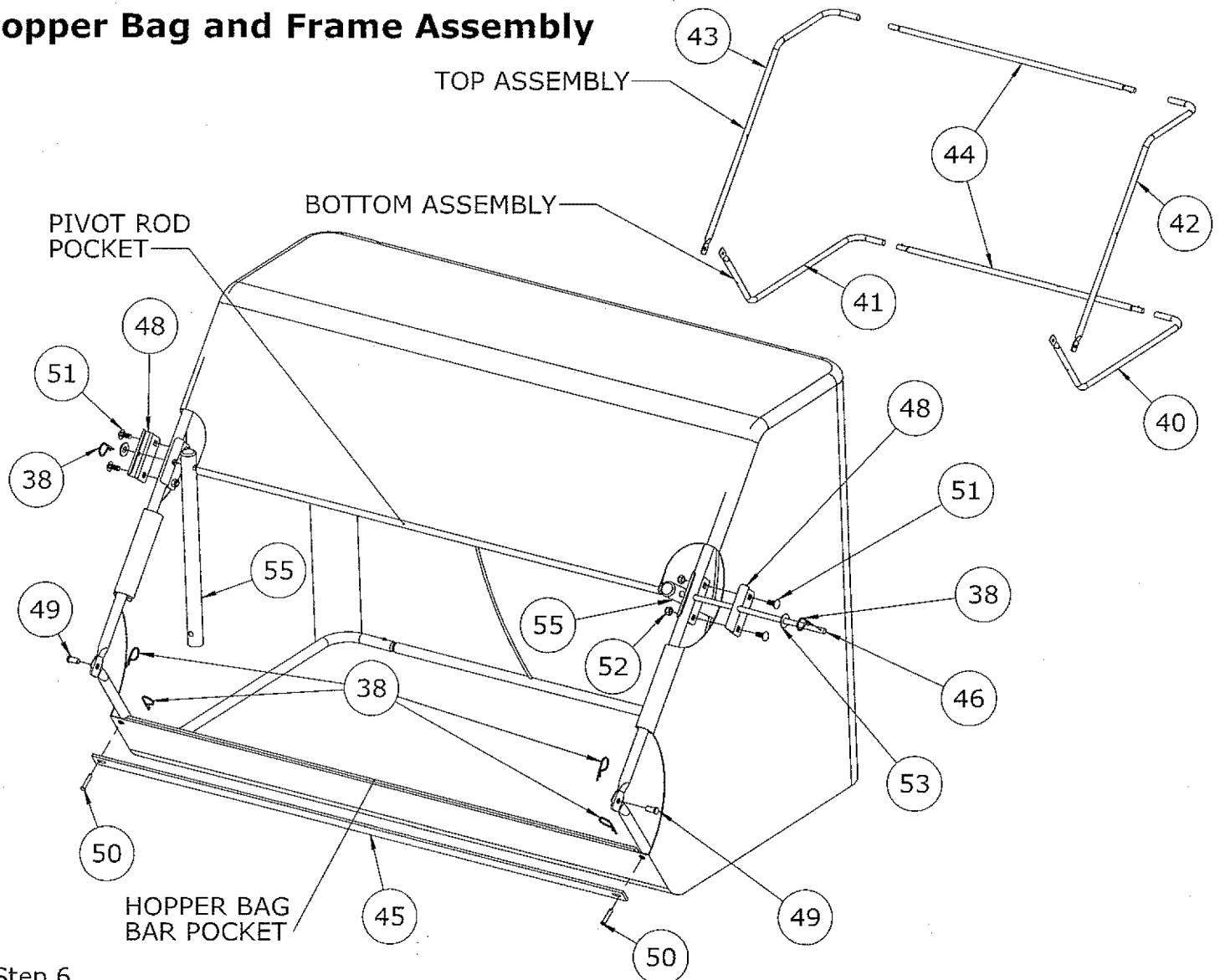
Step 5.

Attach height adjustment lever (3) to height adjustment bar (2) with two 3/8" x 1" hex bolts (31) and 3/8" nylon locknuts (29).

Step 6.

Pin height adjustment plate (4) to height adjustment lever (3) and lock in place with hairpin cotter (38).

Hopper Bag and Frame Assembly



Step 6.

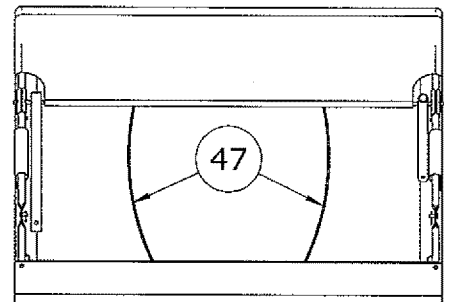
Build bottom assembly. Connect bottom left tube (40), center tube (44), and bottom right tube (41). Slide hopper bag bar (45) into the pocket provided on front bottom of the bag. Insert bottom assembly into hopper bag. Connect the bag, bar and tubes by inserting clevis pins (50) thru grommet on bag, bag bar, and tube. Lock it in place with hairpin cotter (38). Repeat for other side.

Step 7.

Build top assembly. Connect top left tube (42), center tube (44), and top right tube (43). Insert top assembly in to hopper bag. Connect top and bottom tube assemblies with clevis pin (49) and hairpin cotter as shown.

Step 8.

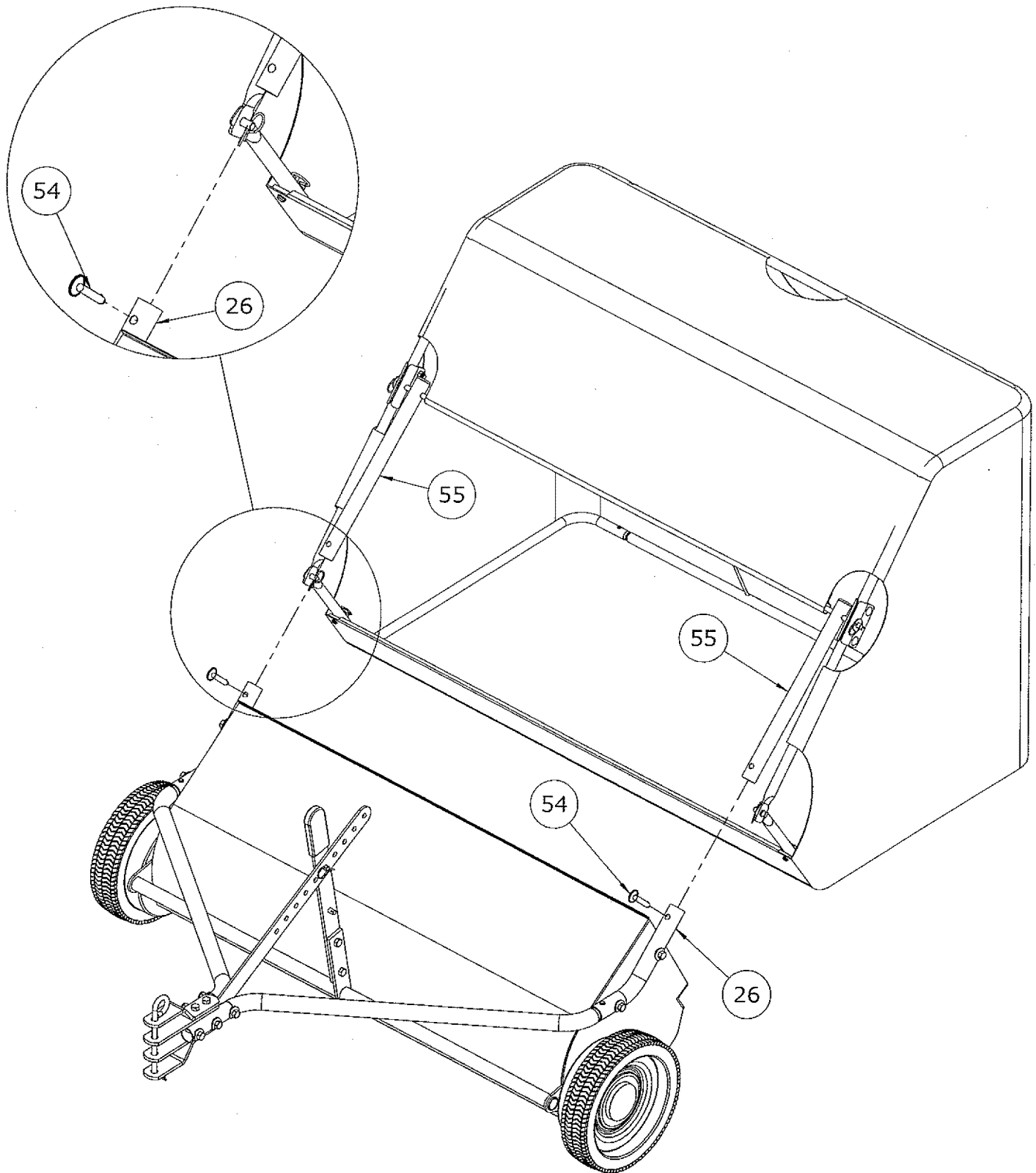
Slide pivot rod (46) thru pivot rod plate (48) hole in side of frame tube (42), another pivot rod plate (48), hopper connect tube (55), and thru pocket in top front of bag, add another hopper connect tube (55), pivot rod plate (48) frame tube (43), pivot rod plate (48) and center. Add flat washer (53) to each side and lock in place with hairpin cotter (38). Bolt pivot rod plates (48) together with 5/16 carriage bolts (51) and nylon locknuts (52).



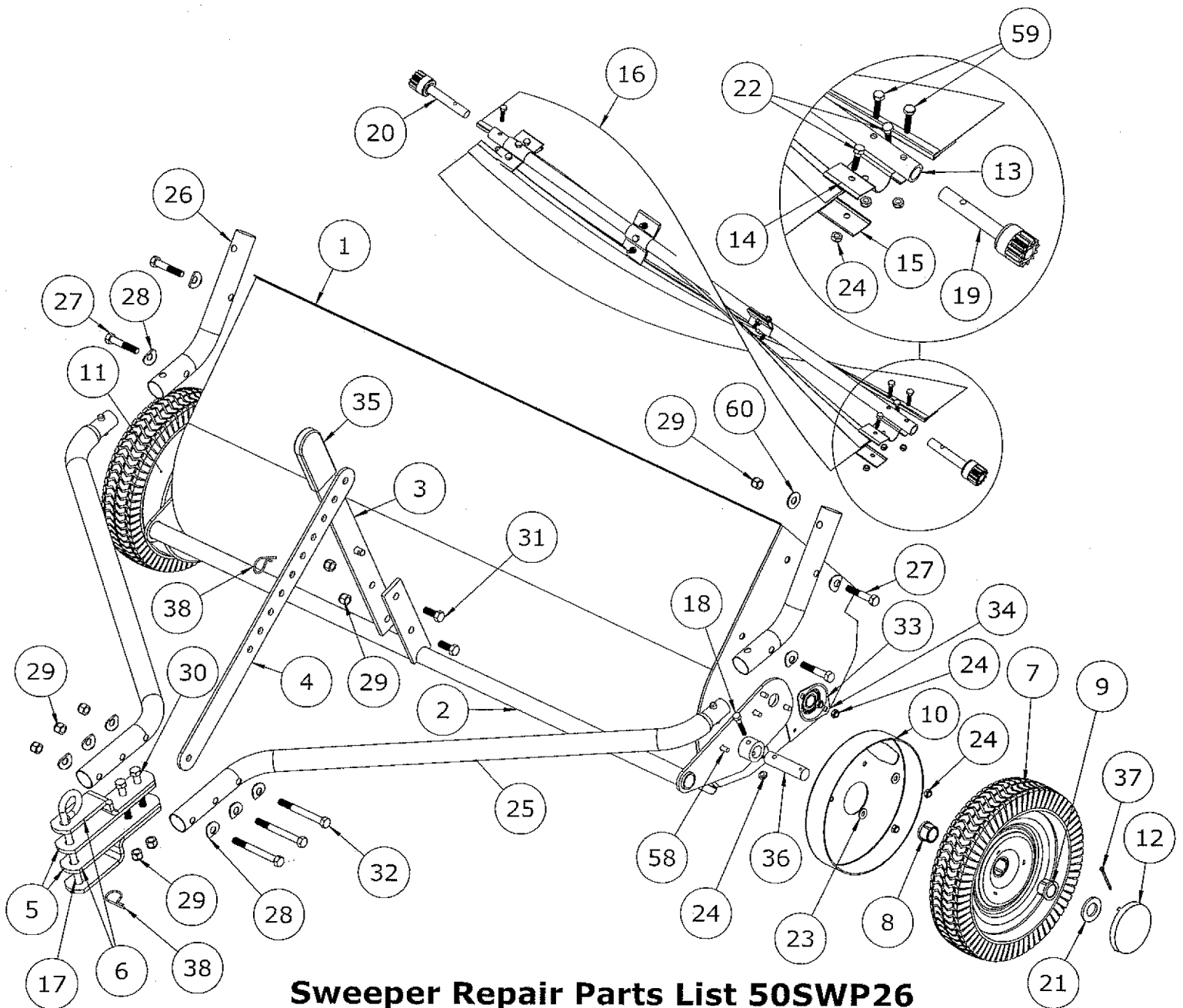
Step 9.

Open bag and insert the 3/16" dia rods (47) into the holes at the rear top and rear bottom of the steel bag frame. Secure bag to frame with velcro tab.

Connecting Bag to Sweeper

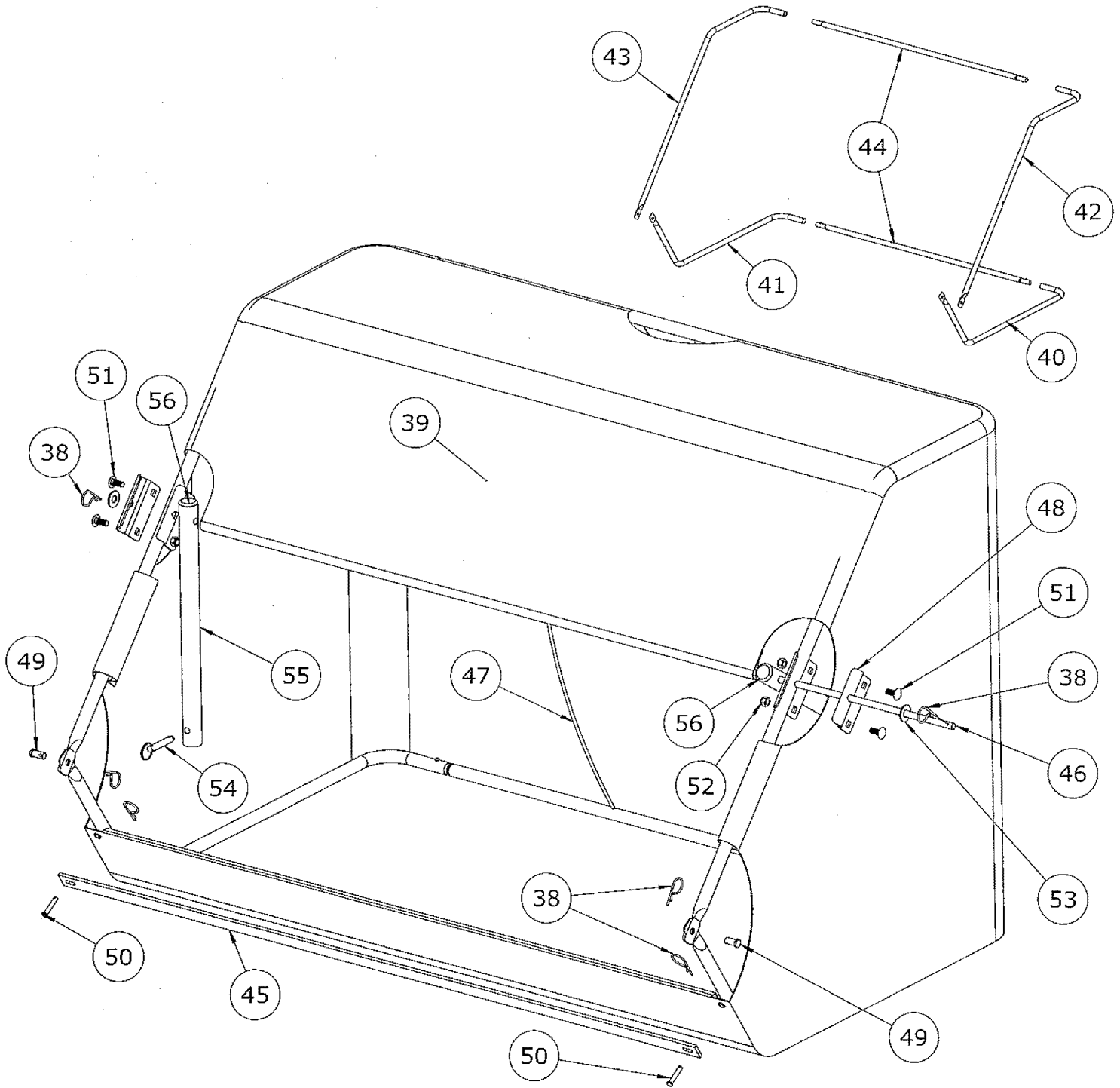


Step 10. Insert hopper connect tubes (55) into hitch mount tubes (26) as shown and lock in place with 3/8" ring grip pins (54).



Sweeper Repair Parts List 50SWP26

REF NO	PART NO	QTY	DESCRIPTION	REF NO	PART NO	QTY	DESCRIPTION
1	6000207	1	SWEEPER ASSEMBLY	22	6000192	10	1/4"-20 X 1" HEX BOLT
2	307119	1	HEIGHT ADJUSTMENT (INCL#36)	23	3000716	4	1/4" USS FLAT WASHER
3	307181	1	LEVER HANDLE (INCL#35)	24	300065	27	1/4"-20 LOCK NUT
4	307113	1	HEIGHT ADJ PLATE	25	307038	2	HITCH TUBE
5	307042	2	CLEVIS PLATE FLAT	26	307034	2	HITCH MOUNT TUBE
6	307043	2	CLEVIS PLATE BENT	27	3000543	4	3/8"-16 X 2" HEX BOLT
7	307011	2	WHEEL (INCL#8 & #9)	28	3000722	10	3/8" USS CURVED WASHER
8	307212	2	WHEEL BUSHING-INNER	29	310061	11	3/8" NYLON LOCK NUT
9	307211	2	WHEEL BUSHING-OUTER	30	310051	2	3/8"-16 X 2-3/4" HEX BOLT
10	307101	1	DUST COVER - LEFT	31	3000533	2	3/8"-16 X 1" HEX BOLT
11	307102	1	DUST COVER - RIGHT	32	3000544	3	3/8"-16 X 3-1/2" HEX BOLT
12	307241	2	HUB CAP	33	307022	2	BEARING ASSEMBLY
13	307125	1	AXLE PIPE	34	3000540	4	1/4"-20 X 5/8" CARRIAGE BOLT
14	307122	5	BRUSH BRACKET	35	307201	1	HANDLE SLEEVE, VINYL
15	307121	10	BRUSH CLAMP	36	307002	2	WHEEL AXLE
16	307322	2	BRUSH	37	300081	2	1/8" X 1-3/4" COTTER PIN
17	307082	1	HITCH PIN LONG	38	307083	2	HAIR PIN COTTER
18	3000542	2	1/4"-20 X 1-1/2" HEX BOLT	58	3000541	4	1/4"-20 X 3/4" HEX BOLT
19	307320	1	LEFT PINION ASSEMBLY	59	3000539	7	1/4"-20 X 1-1/4" HEX BOLT
20	307319	1	RIGHT PINION ASSEMBLY	60	310073	4	3/8" USS FLAT WASHER-BLACK
21	3000721	2	3/4" FLAT WASHER				



Hopper Repair Parts List 50SWP26

REF NO	PART NO	QTY	DESCRIPTION	REF NO	PART NO	QTY	DESCRIPTION
38	307083	6	HAIR PIN COTTER	48	307044	4	PIVOT ROD PLATE
39	307332	1	HOPPER BAG	49	3000818	2	3/8" X 1/2" CLEVIS PIN
40	307071	1	FRAME BOTTOM LEFT	50	3000820	2	1/4" X 1 1/4" CLEVIS PIN
41	307072	1	FRAME BOTTOM RIGHT	51	3000529	4	5/16"-18 X 3/4" CARRIAGE BOLT
42	307073	1	FRAME TOP LEFT	52	3000616	4	5/16"-18 NYLON LOCK NUT
43	307074	1	FRAME TOP RIGHT	53	3000720	2	3/8" USS FLAT WASHER
44	307035	2	FRAME TUBE CENTER	54	3000823	2	3/8" RING GRIP PIN
45	307062	1	HOPPER BAG BAR	55	307032	2	HOPPER CONNECT TUBE
46	307053	1	PIVOT ROD	56	6000193	2	POLY END CAP
47	307052	2	SUPPORT ROD	57	307361	1	NYLON ROPE -NOT SHOWN

LIMITED TWO-YEAR WARRANTY

If this product fails due to a defect in material or workmanship within two years from the date of purchase, we will at our option repair or replace it free of charge. This warranty excludes tires, wheels, brushes and bag, which are expendable and become worn during normal use.

This warranty does not cover:

- Repairs necessary because of operator abuse or negligence.
- Equipment used for commercial or rental purposes.

To arrange for product repair call 1-800-652-2321, or return this product to place of purchase for replacement.

This warranty gives you specific legal rights, and you may also have other rights which may vary from state to state. This warranty applies only while this product is in use in the United States.

PRODUCT RECORD

In the space below record the model number and purchase date of your cart.

Model Number _____.

Purchase Date _____.

Keep this booklet and your receipt in a safe place for future reference.

ORDERING INFORMATION

After the two year warranty period all parts maybe ordered by calling **1-800-652-2321.**

When ordering repair parts, always give the following information:

- Product - **26 CU.FT. LAWN SWEEPER**_____.
- Model Number - 50SWP26_____.
- Part Number - * _____.
- Part Description - * _____.

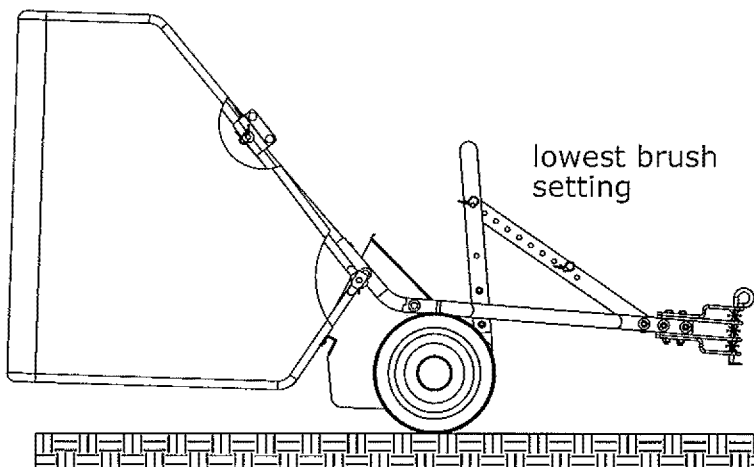
*Found on the repair part list. Reference pages 9 & 10.

QUICK REFERENCE GUIDE

DETERMINING SWEEPER BRUSH HEIGHT

For optimal performance:

- Mow grass while sweeping, especially when leaves are present.
- Set brush height 1/2" down into the grass. A common misconception is that the lower the brush setting the better it will sweep, when in fact a brush setting too low will cause unnecessary drag on brushes.
- Sweep when conditions are dry. When sweeping heavy amounts of debris start with a HIGHER setting, LOWERING with each pass.
- Operate at a speed that will throw the material into the back of the hopper, speed will have to be adjusted depending upon the materials being swept.

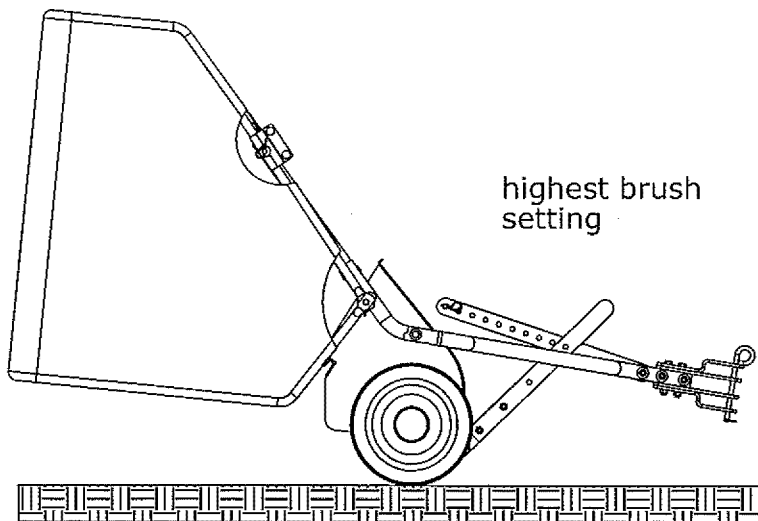


BRUSH HEIGHT ADJUSTMENTS:

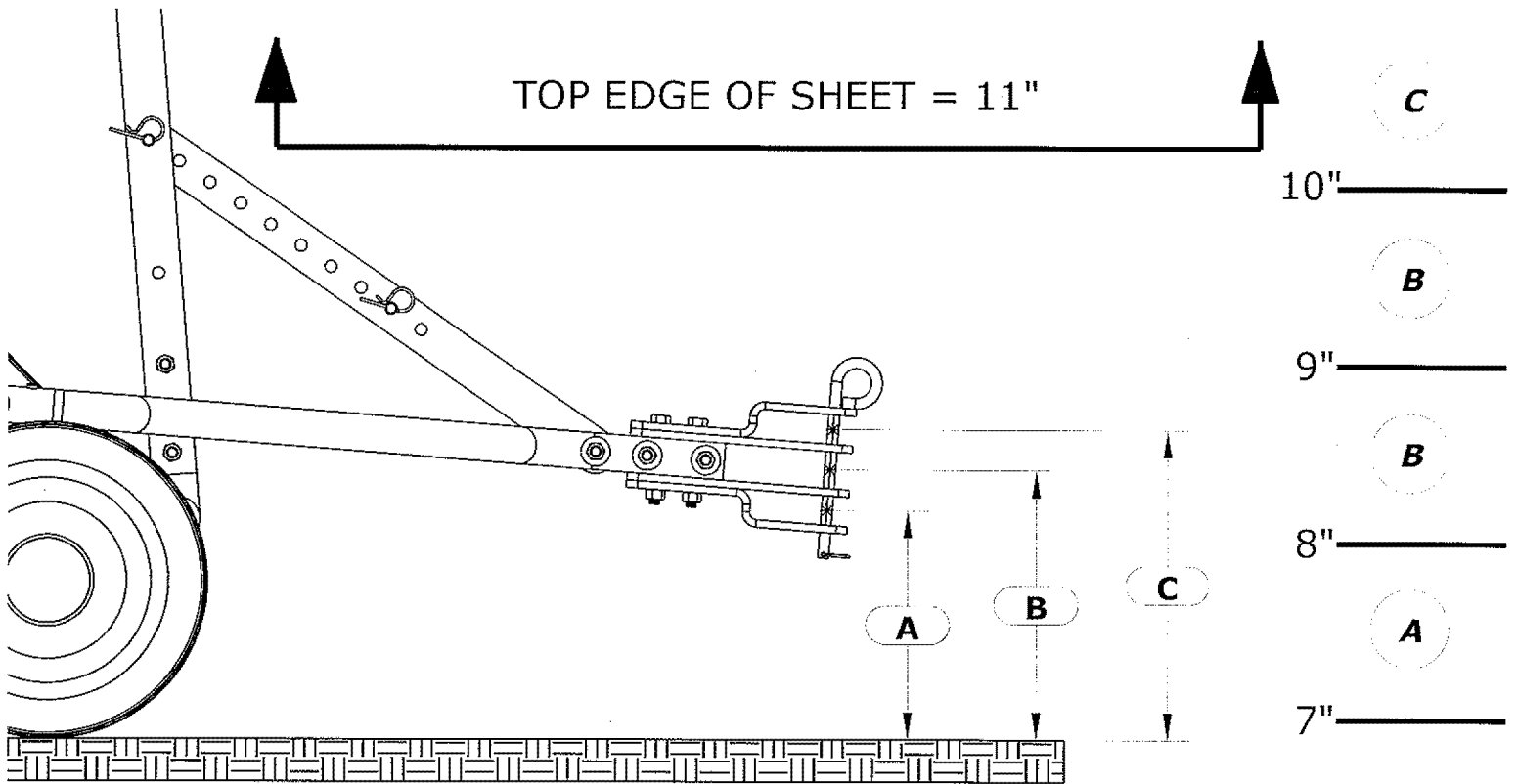
Low settings: on ground to 1" above ground. Smooth surfaces such as driveways parking lots, and sidewalks.

Medium settings: 1" to 2" above ground. Mowed lawns under normal conditions or light leaves.

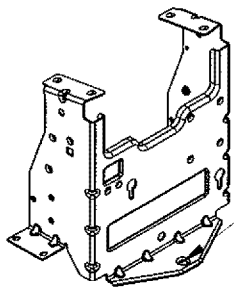
High settings: 2" to 3" above ground. For high grass, heavy leaves, or heavy grass clippings.



NOTE: having the brushes set too low causes wheel slippage. For maximum performance operate sweeper with brushes adjusted as high as possible.



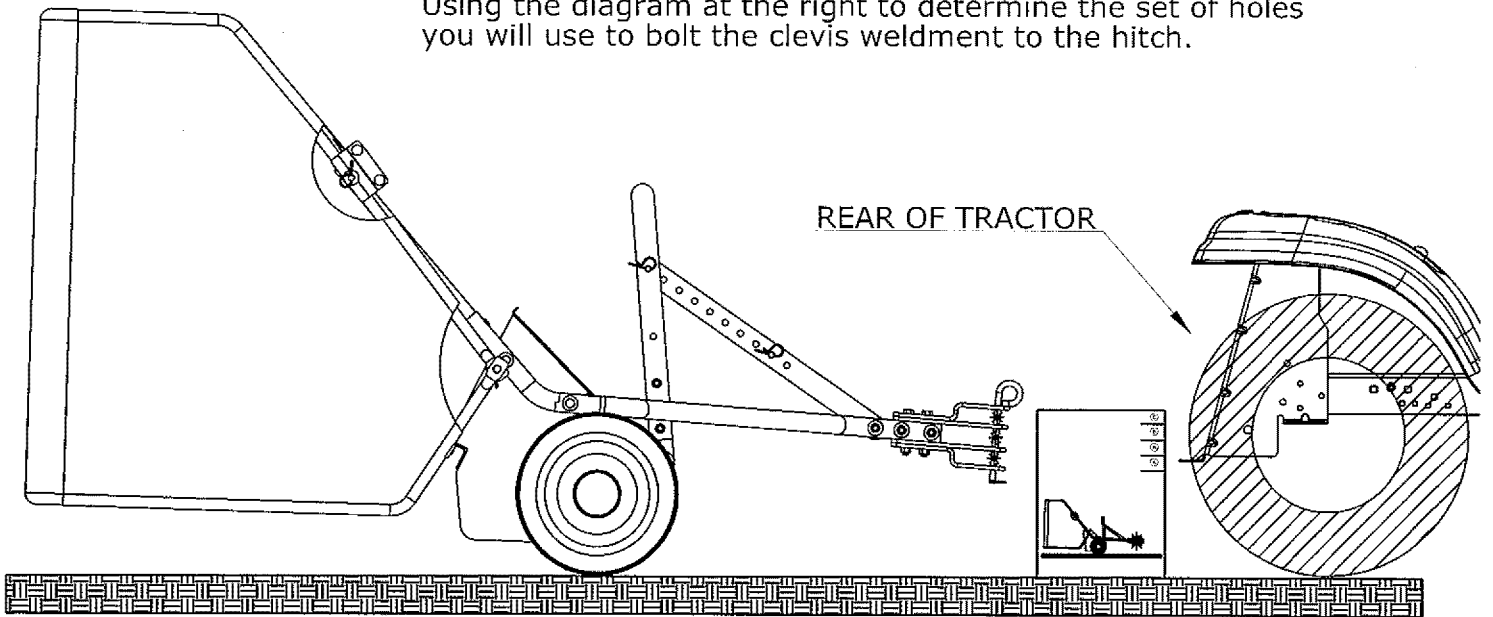
- A = 7" TO 8"
- B = 8" TO 10"
- C = 10" TO 11"



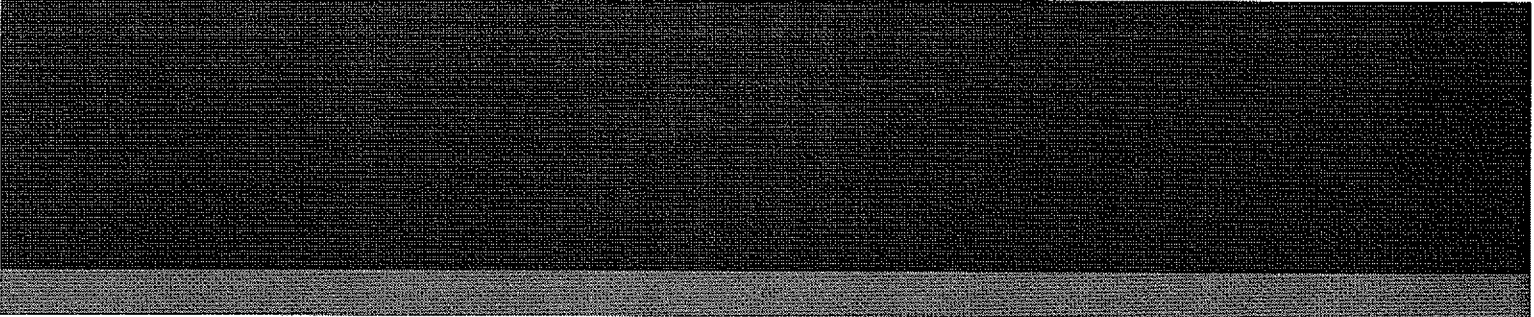
rear hitch hole

With the tractor / riding mower on a flat, level surface; position this sheet at the rear hitch hole of tractor and measure the height from the ground to the top surface of hitch hole plate.

Using the diagram at the right to determine the set of holes you will use to bolt the clevis weldment to the hitch.



BOTTOM EDGE OF SHEET TO GROUND



www.ohiosteel.com
(800) 652-2321