



**APPENDIX G**  
**: USER'S MANUAL**

# KP-4000 Owner's Manual

## Network Keypad



**COMPLETE CONTROL**<sup>TM</sup>

 **Universal Remote Control**<sup>®</sup>

*KP-4000 Owner's Manual ©2009 Universal Remote Control, Inc.*

*The information in this manual is copyright protected. No part of this manual may be copied or reproduced in any form without prior written consent from Universal Remote Control, Inc.*

*UNIVERSAL REMOTE CONTROL, INC. SHALL NOT BE LIABLE FOR OPERATIONAL, TECHNICAL OR EDITORIAL ERRORS/OMISSIONS MADE IN THIS MANUAL.*

*The information in this manual may be subject to change without prior notice.*

*Complete Control is a registered trademark of Universal Remote Control, Inc.*

*All other brand or product names are trademarks or registered trademarks of their respective companies or organizations.*



500 Mamaroneck Avenue, Harrison, NY 10528  
Phone: (914) 835-4484 Fax: (914) 835-4532

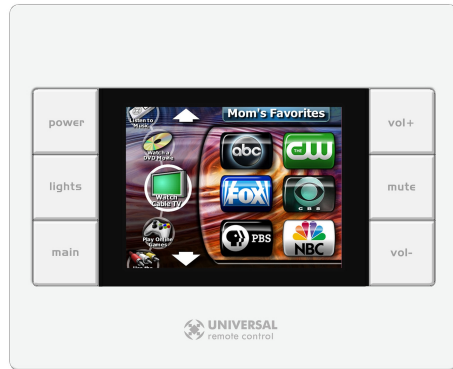
## TABLE OF CONTENTS

<u>Introduction</u>	<u>1</u>
<u>Features and Benefits</u>	<u>2</u>
<u>Parts Guide</u>	<u>2</u>
<u>Network Installation and Control</u>	<u>3</u>
<u>Frequently Asked Questions</u>	<u>4</u>
<u>Specifications</u>	<u>4</u>
<u>USA Limited Warranty Statement</u>	<u>5</u>
<u>Information to the User</u>	<u>6</u>
<u>Warning</u>	<u>6</u>

## Introduction

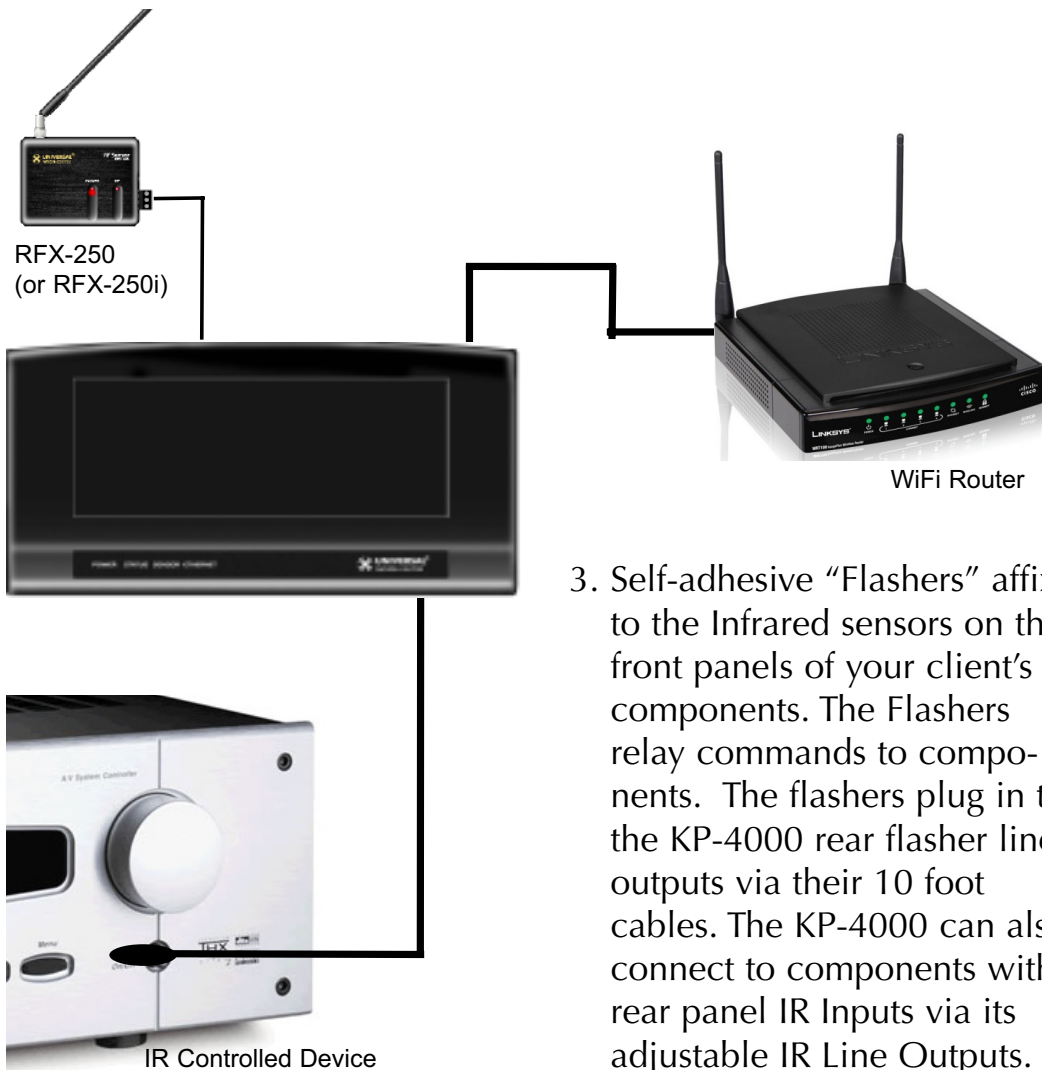
The KP-4000 is a Network Keypad. MAC addressing gives you the ability to use an unlimited amount of KP-4000's and allows the control of many identical components as needed throughout the house.

1. The KP-4000 communicates over a POE (Power Over Ethernet) network switch or directly to URC Lighting over a RFTX-1.



2. The MRX-1 receives commands from the Network via a WiFi router /WAP; or over an optional RFX-250 or RFX-250i.

### IR over RF



3. Self-adhesive "Flashers" affix to the Infrared sensors on the front panels of your client's components. The Flashers relay commands to components. The flashers plug in to the KP-4000 rear flasher line outputs via their 10 foot cables. The KP-4000 can also connect to components with rear panel IR Inputs via its adjustable IR Line Outputs.

## Features and Benefits

### **2-Way IP and RS-232 Thermostats, Security Systems, Home Theater AVRS and Multi-Zone Matrixes**

Via the unique URC 2-Way database installers can drag and drop 2-Way pre-programmed modules into a KP-4000 for matrix pre-amps, multi-zone receivers, alarm and fire systems with either IP or via the MRX-1, RS-232 control. Prebuilt modules for IP Thermostats, appliances and security systems natively for the KP-4000.

### **IP Camera Modules for Surveillance**

User can select from up to six views displayed on one page. Once the camera is selected, the image fills the screen. Pan, tilt, zoom cameras are supported with on screen controls. If the user has more than one camera, the KP-4000 can sequence playback each camera with installer set delays between cameras and camera names displayed.

### **Whole House URC Lighting via RFTX-1**

Via the RFTX-1 transmitter, the KP-4000 can relay commands around the house, creating whole house lighting scenes and paths.

### **Control Devices with Relays and Utilize MRX-1 Sensor Port to Automate TOAD IR Devices**

The MRX-1 offers KP-4000 important capabilities for legacy devices. It is equipped with a sensor port compatible with MSC-400 video or voltage sensors and a NO, NC or Momentary set of contacts.

### **LAN Programming (No USB Needed)**

The Kp-4000 can be installed and configured completely via the Network and, should you have secure access to the client's network remotely, can be completely reprogrammed from the comfort of your office.

## Parts Guide

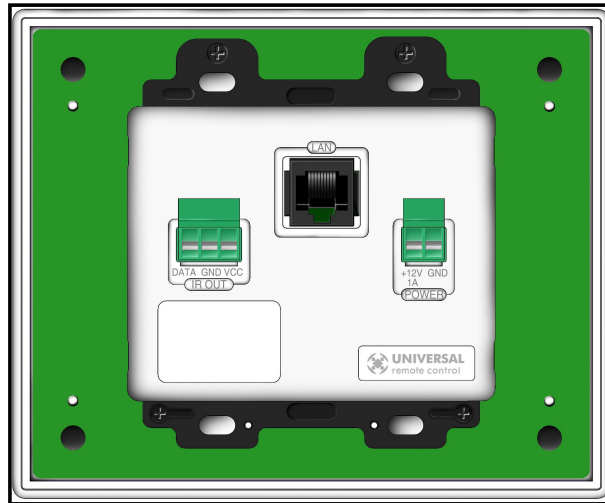
The KP-4000 Network Keypad includes:

- 1 - KP-4000 Network Base Station
- 1 - 12V-1000mA Power Supply
- 1 - Mounting Plate for wall mounting  
the MRX-1

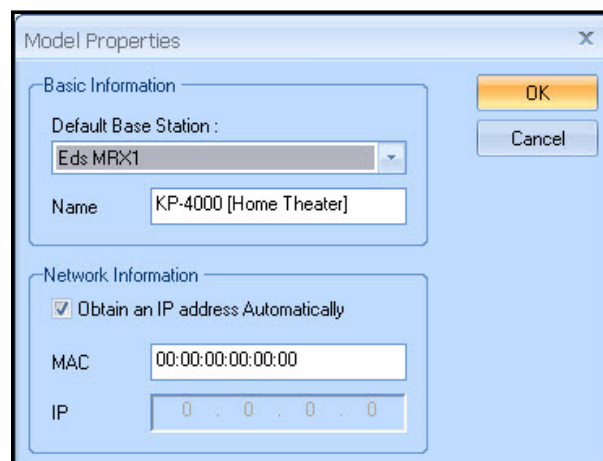
## Network Installation and Control

The KP-4000 is a network keypad that communicates to a MRX-1 base station and allows full control of your components. Once installed to the network, a button press from the remote will send a command over POE (power over ethernet) to the MRX-1 which sends IR, RS232 or Relay commands to the devices you specify.

1. Connect the Ethernet cable (RJ45) to the rear of the KP-4000 and into the rear of the network router.



2. Open the CCP editor.
3. Select Program then Configure Home.
4. Add a KP-4000 Network Keypad and the properties window opens.
5. Select a Base Station to communicate with the KP-4000.
6. Within the Network Information field, the 'Obtain and IP address Automatically' option should be checked or type in a designated Static IP.



## Frequently Asked Questions

### **I'm getting inconsistent operation regardless of flasher level or position.**

Some components are easily overloaded with IR from nearby flashers. Prevent IR from affecting the problem component from other flashers by setting the device to a specific IR Line Output instead of ALL, then adjust the Line Output.

### **I am unable to control my URC Lighting Dimmer/Switch with the KP-4000. Now what?**

Make sure the RF switch on the RFTX-1 is set to the correct frequency for the URC Dimmer or Switch. URC Lighting Models MRFA is 418MHz and MRFB is 433MHz.

### **How do I update the firmware?**

Make sure the KP-4000 is connected to the Network then open CCP and click on the Firmware button located within the Communications tab.

### **How can I set my KP-4000 to factory default?**

Remove the front cover of the KP-4000. Use a pen or pointy device to depress the button and reset the unit.

## Specifications

**Microprocessor:** 190MHz RISC

**Memory:** 64 Megabytes of RAM (for User Configuration)

**Devices:** Supports up to 255 Devices

**Pages:** Supports up to 255 Pages on each Device

**Macro Capability:** Up to 255 steps each, however nesting is allowed

**Network:** One 10/100 Ethernet port

**Weight:** 9.84 oz.

**Size:** 5.75" x 4.7" x 1.8"

**Power :** DC12V, 1A or Use PoE Power



## USA Limited Warranty Statement

Your Universal Remote Control, when delivered to you in new condition, is warranted against defects in materials or workmanship as follows: UNIVERSAL REMOTE CONTROL, INC. warrants this product against defects in material or workmanship for a period of one (1) year and as set forth below. Universal Remote Control will, at its sole option, repair the product using new or comparable rebuilt parts, or exchange the product for a comparable new or rebuilt product. In the event of a defect, these are your exclusive remedies.

This Limited Warranty covers only the hardware components packaged with the Product. It does not cover technical assistance for hardware or software usage and it does not cover any software products whether or not contained in the Product; any such software is provided "AS IS" unless expressly provided for in any enclosed software Limited Warranty.

To obtain warranty service, you must deliver the product, freight prepaid, in its original packaging or packaging affording adequate protection to Universal Remote Control at the address provided in the Owner's Manual. It is your responsibility to backup any macro programming, artwork, software or other materials that may have been programmed into your unit. It is likely that such data, software, or other materials will be lost during service and Universal Remote Control will not be responsible for any such damage or loss. A dated purchase receipt, Bill of Sale, Installation Contract or other verifiable Proof of Purchase is required. For product support and other important information visit Universal Remote Control's website: <http://www.UniversalRemoteControl.com> or call the Universal Remote Control Customer Service Center (914) 835-4484.

This Limited Warranty only covers product issues caused by defects in material or workmanship during ordinary consumer use. It does not cover product issues caused by any other reason, including but not limited to product issues due to commercial use, acts of God, third-party installation, misuse, limitations of technology, or modification of or to any part of the Universal Remote Control product. This Limited Warranty does not cover Universal Remote Control products sold as USED, AS IS, REFURBISHED, so-called "B STOCK" or consumables (such as batteries). This Limited Warranty is invalid if the factory-applied serial number has been altered or removed from the product. This Limited Warranty is valid only in the United States of America. This Limited Warranty specifically excludes products sold by unauthorized resellers.

## Federal Communication Commission Interference Statement

---

This equipment has been tested and found to comply with the limits for a Class B digital device, pursuant to part 15 of the FCC Rules. These limits are designed to provide reasonable protection against harmful interference in a residential installation. This equipment generates, uses and can radiate radio frequency energy and, if not installed and used in accordance with the instructions, may cause harmful interference to radio communications. However, there is no guarantee that interference will not occur in a particular installation. If this equipment does cause harmful interference to radio or television reception, which can be determined by turning the equipment off and on, the user is encouraged to try to correct the interference by one more of the following measures:

- ◆ Reorient or relocate the receiving antenna.
- ◆ Increase the separation between the equipment and receiver.
- ◆ Connect the equipment into an outlet on a circuit different from that to which the receiver is connected.
- ◆ Consult the dealer or an experienced radio/TV technician for help.

### Warning!

Changes or modifications not expressly approved by the manufacturer could void the user's authority to operate the equipment.

Note : The manufacturer is not responsible for any Radio or TV interference caused by unauthorized modifications to this equipment. Such modifications could void the user's authority to operate the equipment.

### FCC Caution

This device complies with Part 15 of the FCC Rules. Operation is subject to the following two conditions: (1) this device may not cause harmful interference, and (2) this device must accept any interference received, including interference that may cause undesired operation.

Any changes or modifications not expressly approved by the party responsible for compliance could void the authority to operate equipment.

The antenna(s) used for this transmitter must not be co-located or operating in conjunction with any other antenna or transmitter.

# Information To The User

This equipment has been tested and found to comply with the limits for a Class B digital device, pursuant to part 15 of the FCC Rules. These limits are designed to provide reasonable protection against harmful interference in a residential installation. This equipment generates, uses and can radiate radio frequency energy and, if not installed and used in accordance with the instructions, may cause harmful interference to radio communications.

However, there is no guarantee that interference will not occur in a particular installation. If this equipment does cause harmful interference to radio or television reception, which can be determined by turning the equipment off and on, the user is encouraged to try to correct the interference by one more of the following measures:

- ◆ Reorient or relocate the receiving antenna.
- ◆ Increase the separation between the equipment and receiver.
- ◆ Connect the equipment into an outlet on a circuit different from that to which the receiver is connected.
- ◆ Consult the dealer or an experienced radio/TV technician for help.

## **Warning**

Changes or modifications not expressly approved by the manufacturer could void the user's authority to operate the equipment.

Note : The manufacturer is not responsible for any Radio or TV interference caused by unauthorized modifications to this equipment. Such modifications could void the user's authority to operate the equipment.



 **Universal Remote Control®**

*500 Mamaroneck Avenue, Harrison, NY 10528*

*Phone: (914) 835-4484 Fax: (914) 835-4532*

[www.universalremote.com](http://www.universalremote.com)