



APPENDIX H
: USER'S MANUAL

Operating Your System

With The MX-5000i
Two Way Touch Screen



 **UNIVERSAL**[®]
remote control

This remote control was Custom Programmed for you by:

For questions about your Custom Programming call:

Custom Programming of a complex home theater and/or a multi-room system is one of the most challenging tasks within an audio/video installation. It involves an intimate knowledge of how the components interact and exact details on the proper sequences of control.

Only a Complete Control dealer has the requisite experience and training to quickly and effectively customize a remote control for true automated operation.

Congratulations on your choice!

MX-5000i Owners Manual © 2009 Universal Remote Control, Inc.

The information in this manual is copyright protected. No part of this manual may be copied or reproduced in any form without prior written consent from Universal Remote Control, Inc.

UNIVERSAL REMOTE CONTROL, INC. SHALL NOT BE LIABLE FOR OPERATIONAL, TECHNICAL OR EDITORIAL ERRORS/OMISSIONS MADE IN THIS MANUAL.

The information in this manual may be subject to change without prior notice.

*Complete Control is a registered trademark of Universal Remote Control, Inc.
Entertainment Made Simple is a trademark of Universal Remote Control, Inc.*

All other brand or product names are trademarks or registered trademarks of their respective companies or organizations.



500 Mamaroneck Avenue, Harrison, NY 10528
Phone: (914) 835-4484 Fax: (914) 835-4532

Table of Contents

Introduction	1
Connecting the Battery Pack	2
Using the Charging Base	2
Two Way via Wi-Fi	2
Optional RF “No Rules” Operation	3
Operating Your System	4
Using Two Way Personal Server Features	5
Revolutionary New iPod Controls	6
Displaying the Settings Screen	9
Sleep Settings	9
Network	9
Brightness	10
System	10
Button Light	10
Power Settings	10
Calibration	11
Date and Time	11
Sound	11
Pickup Settings	11
Factory Default	11
Exit	11
Maintaining Your MX-5000i	12
USA Limited Warranty Statement	12
Specifications	14
Federal Communication Commission Interference Statement	15
Regulatory Information to the user	16
Declaration of Conformity	17
Precautions and Information Concerning Rechargeable Lithium-Ion Batteries	18

Congratulations

You've purchased a unique synthesis of hardware and software engineering, the Complete Control MX-5000i. The twin goals of the design team were to improve the elegance and usability of touch screens through the physical design while providing a new standard in brightness, clarity and animation for the touch screen itself.



Easy Operation

By assigning the important home theater operational buttons to the natural resting place of the end users thumbs, the MX-5000i achieves a new standard in use and comfort.

Automatic Backlighting

The integral motion sensor detects any movement of the touch screen and automatically backlights the screen. You do not have to press any button to display the screen. Any movement of the MX-5000i renews the backlighting. To adjust the backlighting, see page 9.

Programming the MX-5000i

To fully automate an audio/video system and integrate two way automation of servers etc. the programmer must have a detailed knowledge of each component, LAN configuration, Wi-Fi optimization and how the system is connected and operated. Only a trained and certified professional audio/video installer can install an MX-5000i automation system in a timely and efficient manner.

How do I reset the MX-5000i

Normally, resetting the MX-5000i is not necessary. However, if the MX-5000i's touch screen freezes or if you notice unusual behavior, you should press the MAIN and EXIT buttons simultaneously for 3 seconds. It will restart the MX-5000i.

Connecting the Battery Pack

Unlock the rear cover by pressing down on the spring lock at the top of the cover.

Remove the cover. For shipment from the factory, the battery is left out of the MX-5000i. Place the battery into the battery compartment, making sure you align the contacts on the battery to the contacts on the MX-5000i. The battery will snap into place when aligned properly.

Replace the cover and snap it into place.

Using the Charging Base

Plug the 6V DC adapter into a power outlet and into the back of the charging base.

Gently place the MX-5000i into the cradle of the charging base. It automatically aligns itself to the contacts on the charging base.

The status indicator should immediately light. Red indicates that it is charging. Blue shows that it is fully charged. There is no harm in leaving the MX-5000i on its charging base whenever it is not in use.



Red indicates charging, Blue that the remote is fully charged.

Two Way via Wi-Fi

To use the MX-5000i with any two way companion product, the MX-5000i must be configured by your installer to be part of a LAN (local area network) via a Wi-Fi b/g access point or router. This is not user configurable. If you have any questions, consult with your custom installer.

Optional RF “No Rules” Operation

In combination with an MSC-400 Master System Controller, or an RF Base Station, the MX-5000i can control your system without being in line-of-sight of the equipment.

The MSC-400 enhances the capabilities of the MX-5000i by storing and issuing Smart Macros to your main system components. It is triggered by RF Smart Macro commands via RF (radio frequency). In addition, your MX-5000i can control components in secondary rooms and systems via MRF-350i or MRF-260i RF base stations.

1. The MX-5000i sends radio waves in every direction, so you don't have to point the remote anymore!



2. The RFX-250i RF Sensor can be freely positioned for optimal reception.



3. The MSC-400 can control IR, RS232 and Relay controlled devices.



4. Self-adhesive “Flashers” affix to the Infrared sensors on the front panels of your components. Uniquely, all Complete Control base stations can also connect to components with rear panel IR Inputs via adjustable IR Line Outputs. The MSC-400 offers RS-232 control via rear panel connections as well.

Operating Your System

The MX-5000i's main pages display the activities and devices in your system. Press the main page button to see what your choices are. Large systems may have more than one page. Press either of the Page buttons if you don't see all your devices.

Gently press any screen button with your finger to select an activity or a device. The screen will change to a display of the buttons you need for that activity/device. The Page buttons may reveal additional buttons for some devices and activities.

When you would like to control another device, press the main page button and select a new device from the main page.

The main button always displays the main menu pages.

The Page buttons display additional pages of controls.

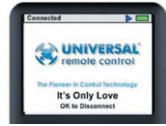
The Volume and Mute buttons are always available regardless of what screen is displayed.

The 4 way cursor buttons enable you to both scroll lists of artists, albums or songs from your Music Server on the MX-5000i touch screen or to navigate TV guides and menus with ease.



Using Two Way Personal Server Features

Step 1 – Insert an iPod into the PSX. The Universal Remote Control screen appears on the iPod. This means it's connected to the dock and ready for use with the MX-5000i remote control.



Step 2 – Select the dock you want to listen to from the Main page of your MX-5000i.

Step 3 – If the system has just been turned on, you may see the message, "Connecting to iPod Dock". Once the MX-5000i has connected to the iPod Dock, the iPod menu screen appears. If the iPod is already playing, the "Now playing screen" appears.

Step 4 – When you browse for new content, press the Menu button. The browse screen appears.

On the MX-5000i, you can navigate lists on the screen in two ways. Either flick the list by touching the screen or place your thumb on the Up, Down arrow buttons. When you see the item you want, you can either touch it on the MX-5000i screen, or you can press the "OK" button. The Now Playing Screen appears after a selection is made.

Press the Cursor Up and Down buttons to make the list scroll.

The Menu Button reveals the last menu list you accessed. Operates like the iPod.

Transport Controls enable you to play, pause, skip tracks or fast forward and rewind whatever is playing.



Touch the item you want on the touch screen.

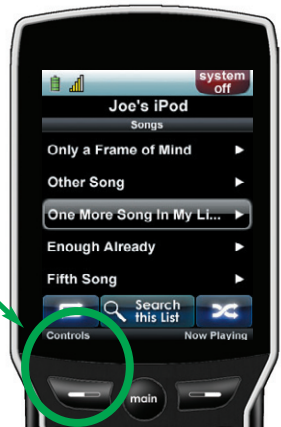
The Right Page button, labeled Now Playing returns the screen to the now playing screen.

Press the OK button to select the item you want.

Revolutionary New iPod Controls

The heart of your new personal server experience is found on your MX-5000i by pressing the Controls button. This reveals the unique personal server features only found on the MX-5000i.

The Page button is now labeled Controls and always accesses the unique iPod Controls screen.



Once the Controls screen appears, simply tap the feature you want:

Shortcuts to finding playlists, albums, artists, etc. without using the Menu button.

More from this artist, this album, this genre, even this composer...

Music Search enables you to alphabetically search for any artist, album, song or playlist.

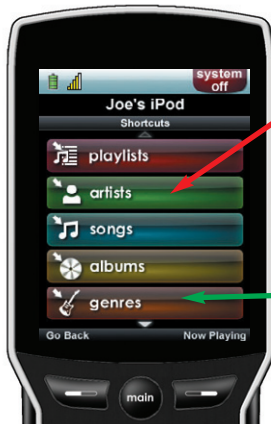


Shuffle exactly what you want (this album, this artist, this genre, etc.)

Jukebox lets you build and manage your own playlist without accessing your PC.

Shortcuts:

The "Shortcuts" screen makes navigating your iPod easier than ever before. Touch any button to jump directly to that menu. Example: Touch the "Artists" button to jump directly to the Artists menu.



Use the Up and Down Cursor buttons to reveal more shortcuts.

Touch the item you want or use the OK button.

Shuffle:

The “Shuffle” screen enables you to easily shuffle just what you want. The currently playing album, artist, genre or playlist, or scroll the list to reveal new revolutionary shuffle options. You can choose to shuffle any artist, any album, any genre, or even any composer.

For example, at the bottom of the list, select Another Genre, then select Jazz to Shuffle just your Jazz music.

Play More From:

The “Play More From” button enables you to play more from the currently playing artist, album, genre or composer.

Imagine how powerful this is when you are exploring your music using shuffle play. Anytime you hear someone you are curious about, touch the Play More From button and explore their work.

Jukebox:

The “Jukebox” button opens a menu of choices allowing you to create a jukebox playlist anytime, right on your MX-5000i. Touch the “add song to Jukebox” icon or “add album to jukebox” to add the currently playing song or album to the jukebox. To play the jukebox, touch the “play jukebox” icon.

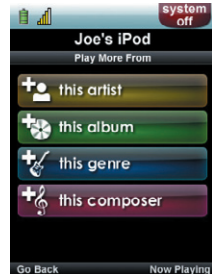
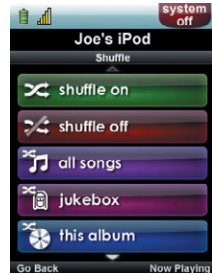
To edit the jukebox, touch the “view jukebox” icon.

Note: the Jukebox playlist is not cleared if you remove and replace the same iPod. However, it will be erased, if you replace the iPod with a different one, or in the event of a power failure.

Edit Jukebox:

Songs can be moved up, down or deleted from the jukebox list by using the control keys on the bottom of the “view jukebox” screen.

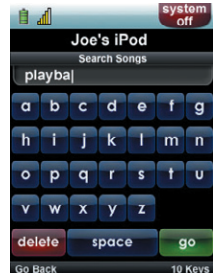
To exit from the “View Jukebox” screen, touch either the Left Page button (labeled “Go Back”) or the Right Page button (labeled “Now Playing”).



Using the Alpha Search Feature:

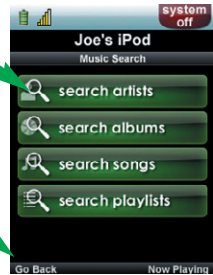
The “search” button appears in the center of the bottom of the screen whenever you are browsing lists of artists, albums, songs, or playlists.

Simply click on Search, and an alphabetical keyboard appears. Type in as many characters as you like and touch “Go”. The Music Search screen will appear.



Select the category you'd like to search.

The Left Page button (now labeled “Go Back”) takes you back to the last list you were browsing.

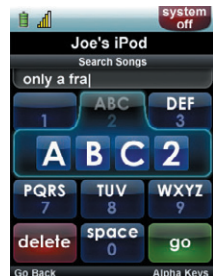


Using the 10 Key “Cell Phone Style” Keyboard

If you find the keyboard buttons to small, touch the Right Page button (now labeled “10 Keys”). This reveals a screen that allows you to type the same way you do with small cell phones.

For example, if you want to type the letter “C”, press the ABC2 button. A pop up of ABC2 will appear. Touch C and the letter is entered.

Press Go when you are ready to search, then select the category.

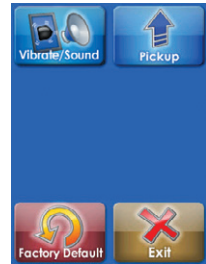


Displaying the Settings Screen

You can adjust the settings of the MX-5000i whenever you like by pressing and holding the main + OK button for three seconds. When you do, the screen will change to the Settings screen. If you do not press any button on the Settings screen within 30 seconds, the MX-5000i will time out and automatically return to normal operation.



Page buttons reveal the rest of the settings.

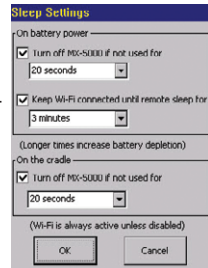


Page 2 of the Settings Screen

There are two pages of Settings screen. To access the other page, press either of the Page buttons.

Sleep Settings

Wi-Fi and Backlighting can be separately adjusted to conserve battery life. Note that if Wi-Fi is disconnected, the MX-5000i will take an additional 4-10 seconds to connect to the network when a two way device is started.

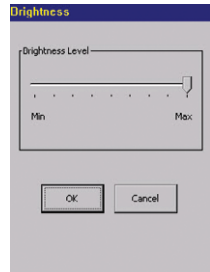


Network

WARNING! Only use this button when instructed to by Technical Support. The Network screen displays network information about your MX-5000i and the wireless network it is connected to. Do not make any changes on this screen!

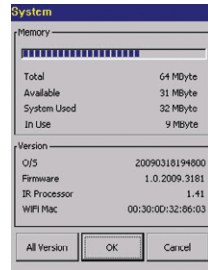
Brightness

Adjust the screen brightness by moving the slider. Min is the dimmest setting and Max is the brightest setting.



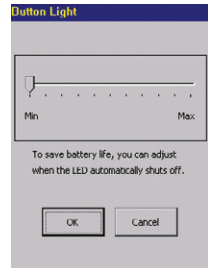
System

The System Information screen displays data about your MX-5000i's operating system, memory etc.



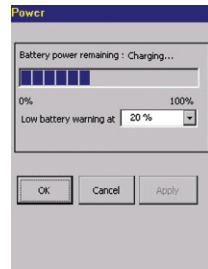
Button Light

You can adjust the brightness of the LEDs that backlight the buttons of the MX-5000i. Move the slider to the left to dim the backlighting and move it to the right to brighten the backlighting.



Power Settings

The remaining charge can be displayed by selecting Power. You can also adjust when the low battery warning screen will appear.



Calibration

If you like, you can calibrate where you tap by running the calibration. You will need a pen top or PDA stylus to do this. Do not attempt to calibrate using your fingers.

Date and Time

Your MX-5000i may have been programmed to display the date or time on the touch screen. If you need to, you can adjust the time displayed by changing the settings on this screen. If you live in a part of the country that uses daylight savings time, check the box next to: "Automatically adjust time for daylight savings time".



Sound

You can adjust the volume or touch vibration to any level you like by touching and dragging the volume control.

Pickup Settings

You can set your MX-5000i to only turn on when touched, or every time you move it. Simply select on or off. The pickup sensitivity can be adjusted with the slider.

Factory Default

WARNING! Only use this button when instructed to by Technical Support. It resets the memory of the MX-5000i to the factory condition. All your programming will be lost!

Exit

When you have finished adjusting Settings, simply tap the EXIT button to return to normal operation.

Maintaining Your MX-5000i

Be careful not to scratch the touch screen, only use your finger to tap the LCD touch screen or use a plastic pen top or PDA stylus. Never use a real pen, pencil or any other sharp object on the screen. Keep it away from extreme cold or heat. The MX-5000i is not waterproof. Do not use it in any location that is damp or wet. If you spill water on it, take out the battery pack and let the MX-5000i dry for 48 hours before you try powering it up again. If you spill coffee or another beverage on it, clean it with distilled water. Make sure no water gets inside the MX-5000i. The touch screen contains a glass element. Don't drop the MX-5000i or impact it against anything.

Use a soft, damp cloth to clean the screen. If the screen still shows finger prints, clean it with watered down window-cleaner. Do not use anything abrasive and don't use too much water, some might leak into the interior of the remote.

Precautions & Information: Rechargeable Lithium Ion Batteries

If you will not be using your remote control for an extended period of time, be sure to remove the battery. Do not attempt to disassemble, alter or apply heat to the battery. Use care to avoid dropping the battery or subjecting it to severe impact that could damage the case. The battery should not be immersed in water. Lithium Ion batteries are recyclable. For the address of a recycle drop-off location near you call toll free 1-800-822-8837 or visit <http://www.rbc.com>

USA Limited Warranty Statement

Your Universal Remote Control, when delivered to you in new condition, is warranted against defects in materials or workmanship as follows: UNIVERSAL REMOTE CONTROL, INC. warrants this product against defects in material or workmanship for a period of one (1) year and as set forth below. Universal Remote Control will, at its sole option, repair the product using new or comparable rebuilt parts, or exchange the product for a comparable new or rebuilt product. In the event of a defect, these are your exclusive remedies.

This Limited Warranty covers only the hardware components packaged with the Product. It does not cover technical assistance for hardware or software usage and it does not cover any software products whether or not contained in the Product; any such software is provided "AS IS" unless expressly provided for in any enclosed software Limited Warranty.

To obtain warranty service, you must deliver the product, freight prepaid, in its original packaging or packaging affording adequate protection to Universal Remote Control at the address provided in the Owner's Manual. It is your responsibility to backup any macro programming, artwork, software or other materials that may have been programmed into your unit. It is likely that such data, software, or other materials will be lost during service and Universal Remote Control will not be responsible for any such damage or loss. A dated purchase receipt, Bill of Sale, Installation Contract or other verifiable Proof of Purchase is required. For product support and other important information visit Universal Remote Control's website: <http://www.UniversalRemoteControl.com> or call the Universal Remote Control Customer Service Center (914) 835-4484.

This Limited Warranty only covers product issues caused by defects in material or workmanship during ordinary consumer use. It does not cover product issues caused by any other reason, including but not limited to product issues due to commercial use, acts of God, third-party installation, misuse, limitations of technology, or modification of or to any part of the Universal Remote Control product. This Limited Warranty does not cover Universal Remote Control products sold as USED, AS IS, REFURBISHED, so-called "B STOCK" or consumables (such as batteries). This Limited Warranty is invalid if the factory-applied serial number has been altered or removed from the product. This Limited Warranty is valid only in the United States of America. This Limited Warranty specifically excludes products sold by unauthorized resellers.

UNIVERSAL REMOTE CONTROL SHALL NOT BE LIABLE FOR ANY INCIDENTAL OR CONSEQUENTIAL DAMAGES FOR BREACH OF ANY EXPRESS OR IMPLIED WARRANTY OR CONDITION ON THIS PRODUCT. EXCEPT TO THE EXTENT PROHIBITED BY APPLICABLE LAW, THERE IS NO OTHER WARRANTY EXPRESSED OR IMPLIED. UNIVERSAL REMOTE CONTROL WILL NOT BE HELD RESPONSIBLE FOR STATEMENTS MADE BY OTHERS CONCERNING THE MERCHANTABILITY OR FITNESS FOR A PARTICULAR PURPOSE ON THIS PRODUCT. Some states or jurisdictions do not allow the exclusion or limitation of incidental or consequential damages, or allow limitations on how long an implied warranty lasts, so the above limitations or exclusions may not apply to you. This Limited Warranty gives you specific legal rights and you may have other rights which vary from state to state or jurisdiction to jurisdiction.

Specifications

Microprocessor: 533MHz ARM9

RAM: 128Mbyte Mobile DDR

NAND: 64Mbyte

LCD: 2.8 Inch Screen (240 by 320)

LCD Backlighting by LED

Sound: mono 1 watt

USB: 2.0

Devices - Supports up to 255 Devices with text, less with heavy graphics usage

Pages - Supports up to 255 Pages on each Device with text, less with heavy graphics usage

Learning Capability - Standard frequencies (20kHz to 455kHz)

Macro Capability - Up to 255 steps each, however nesting is allowed

IR Range (Line of Sight via Infrared): 30-50 feet, depending on the environment

RF Frequency: 433.92MHz

RF Range (radio frequency): 50 to 100 feet, depending upon the environment

Wi-Fi: IEEE 802.11 B (11Mps), G (54Mps)

Battery: Lithium Ion, 2400mAh

Battery Capacity: 4 hours continuous use, 9 days standby

Battery Charging Time: 5 Hours

Dimensions: 8.8" Height x 2.3" Wide x 0.9 Thick

Battery Warranty : 1 Year

Weight (without AC Adapter): 7.8 oz

Federal Communication Commission Interference Statement

This equipment has been tested and found to comply with the limits for a Class B digital device, pursuant to part 15 of the FCC Rules. These limits are designed to provide reasonable protection against harmful interference in a residential installation. This equipment generates, uses and can radiate radio frequency energy and, if not installed and used in accordance with the instructions, may cause harmful interference to radio communications. However, there is no guarantee that interference will not occur in a particular installation. If this equipment does cause harmful interference to radio or television reception, which can be determined by turning the equipment off and on, the user is encouraged to try to correct the interference by one more of the following measures:

- ◆ Reorient or relocate the receiving antenna.
- ◆ Increase the separation between the equipment and receiver.
- ◆ Connect the equipment into an outlet on a circuit different from that to which the receiver is connected.
- ◆ Consult the dealer or an experienced radio/TV technician for help.

Warning!

Changes or modifications not expressly approved by the manufacturer could void the user's authority to operate the equipment.

Note : The manufacturer is not responsible for any Radio or TV interference caused by unauthorized modifications to this equipment. Such modifications could void the user's authority to operate the equipment.

FCC Caution

This device complies with Part 15 of the FCC Rules. Operation is subject to the following two conditions: (1) this device may not cause harmful interference, and (2) this device must accept any interference received, including interference that may cause undesired operation.

Any changes or modifications not expressly approved by the party responsible for compliance could void the authority to operate equipment.

The antenna(s) used for this transmitter must not be co-located or operating in conjunction with any other antenna or transmitter.

Federal Communication Commission (FCC) Radiation Exposure Statement

This remote device is approved as a hand-held and hand-operated only portable (relative to hand) device which is normally operated at 20 cm from a person's body.

Regulatory Information to the user

■ CE conformity Notice

Products with “CE” marking comply with the R&TTE Directive 1995/5/EC, EMC Directive 2004/108/EC and Low Voltage Directive 2006/95/EEC issued by the commission of the European Community.

1) R&TTE Directive

- Safety : EN 60950-1
- EMC : ETSI EN 301 489-1,3, 17
- RF : ETSI EN 300 220-1,2
: ETSI EN 300 328

2) EMC Directive

- Emission : EN 55022
- Immunity : EN 55024
- Power : EN-61000-3-2, 3

3) Low Voltage Directive

- Product safety : EN 60950-1

■ Safety instruction for charging internal rechargeable battery of remote control Caution


Use only with EN60950-1 approved as Limited power source and double insulation(□) marked power adaptor & same ratings described on the product label (6Vdc, 2.0A).

■ Declaration of Conformity

“Hereby, Universal Remote Control Inc. declares that this MX-5000i is in compliance with the Essential requirements and other relevant provisions of Directive 1999/5/EC.”



Universal Remote Control®

Certification	CE 0197
Type No.(Model No.)	MX-5000i
Batch/Serial No.	-
Power Rating	6.0V  , 2.0A
Frequency band	433.92MHz wifi: IEEE 802.11B (11Mps),G

Declaration of Conformity

Company Name : Universal Remote Control Inc.
 Company Address : 500Mamaroneck Avenue, Harrison, NY 10528, U.S.A
www.universalremote.com
 Contact Information : Phone: (914)835-4484 Fax: (914)835-4532
 Brand Name : UNIVERSAL remote control
 Product Name : RF Re-mote Controller
 Model Name : MX-5000i

This product herewith complies with the requirements of EMC Directive (2004/108/EC) and R&TTE Directive(1995/5/EC) issued by the Commission of the European Community

Compliance with these directives implies conformity to the following European Community

- EMC Directive
 - EN 55022
 - EN 55024
 - EN 61000-3-2
 - EN 61000-3-3
- R&TTE Directive
 - EN 60950-1
 - ETSI EN 301-489-1,3,17
 - ETSI EN 300 220-1,2
 - ETSI EN 300 328-

List of test reports and/or certificate verified compliance with the standards above

- EMC Directive
 - Report No.
 - Testing Laboratory : Gumi College EMC Center
- R&TTE Directive
 - Certificate No.
 - Certificate Body : TUV Rheinland (No. 0197)

Date of issue : May 30, 2010

Name and signature of authorized person : James Novak
 Senior Product Manager
 Universal Remote Control Inc.

Precautions and Information Concerning Rechargeable Lithium-Ion Batteries

- ◆ If you will not be using your remote control for an extended period of time, be sure to remove the battery
- ◆ Do not attempt to disassemble, alter or apply heat to the battery.
- ◆ Use care to avoid dropping the battery or subjecting it to severe impact that could damage the case.
- ◆ The battery should not be immersed in water.
- ◆ Lithium Ion batteries are recyclable. For the address of a recycle drop-off location near you call toll Free 1-800-822-8837 or visit <http://www.rbr.com>



500 Mamaroneck Avenue, Harrison, NY 10528

Phone: (914) 835-4484 Fax: (914) 835-4532

www.universalremote.com