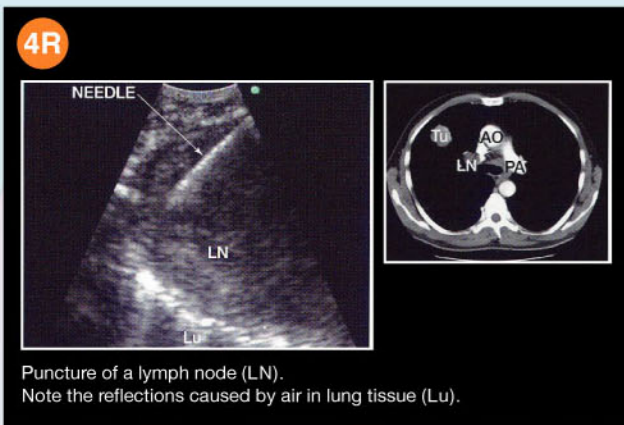
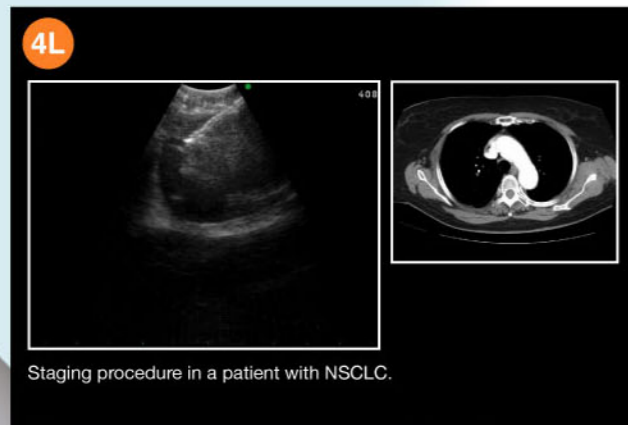


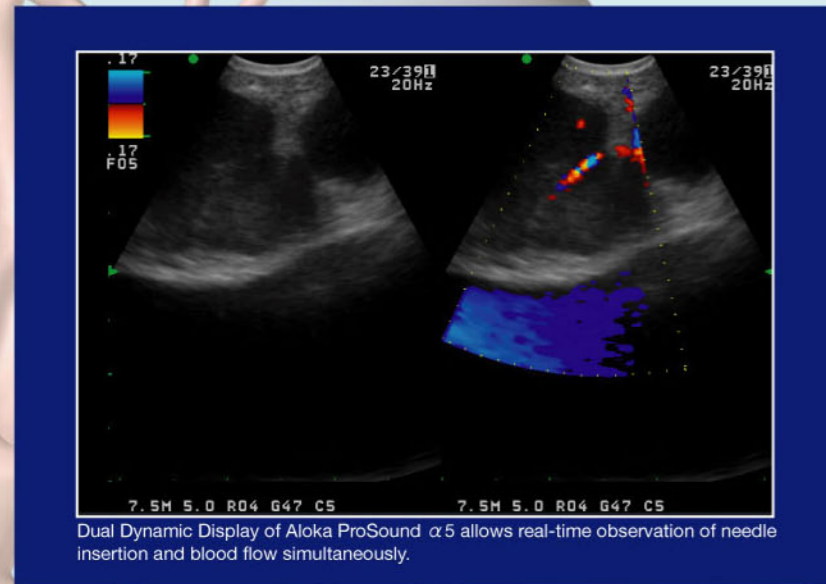
Clinical cases



4R Puncture of a lymph node (LN). Note the reflections caused by air in lung tissue (Lu).



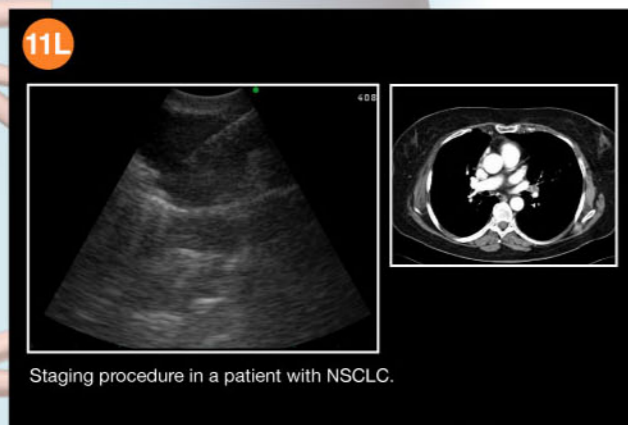
4L Staging procedure in a patient with NSCLC.



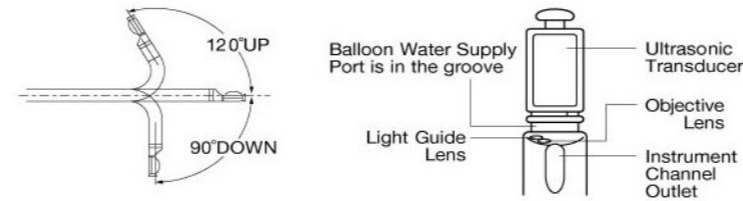
Dual Dynamic Display of Aloka ProSound α5 allows real-time observation of needle insertion and blood flow simultaneously.



7 A patient suspected of having mediastinal lymphoma was referred for EBUS-TBNA and diagnosed as sarcoidosis.



11L Staging procedure in a patient with NSCLC.

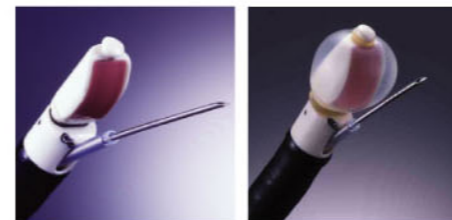


BF-UC180F Specifications

Model		BF-UC180F		
Endoscopic functions	Optical system	Field of view	80 degree	
		Direction of view	35 degree forward oblique	
		Depth of field	2 to 50 mm	
		Distal end outer diameter	6.9 mm	
	Insertion tube	Insertion tube outer diameter	6.2 mm	
		Working length	600 mm	
		Channel inner diameter	2.2 mm	
	Instrument channel	Direction from which Endo-Therapy accessories enter and exit the endoscopic image		
	Bending section	Angulation range	UP 120, Down 90	
	Total length		890 mm	
Ultrasonic functions		With ALOKA ProSound α5	With OLYMPUS EU-C60	
	Ultrasonic cable	MAJ-1597 (1,500 mm)	MAJ-1722 (1,200 mm)	
	Display mode	B-mode, M-mode, D-mode, Flow-mode, Powerflow-mode	B-mode, Color Power Doppler mode	
	Scanning method	Electronic curved linear array		
	Scanning direction	Parallel to the insertion direction		
	Frequency	5 / 7.5 / 10 / 12 MHz	7.5 MHz	
	Tissue Harmonic Echo	5.0P / 6.0S / 6.0R / 7.5H	N/A	
	Scanning range	60 degree	50 degree	
	Focusing Point	A maximum of 4 focusing points are available.		
Contacting method	Balloon method, Direct contacting method			

NA-201SX-4022 Specifications

Model	NA-201SX-4022
Maximum Insertion Portion Diameter	1.8 mm
Working Length	700 mm
Needle Width	22 G
Needle Length	40 mm



Any product in our brochures that features this is part of the lineup of Olympus fine-needle aspiration biopsy product.

Specifications, design and accessories are subject to change without any notice or obligation on the part of the manufacturer.

OLYMPUS

OLYMPUS MEDICAL SYSTEMS CORP.
Shinjuku Monolith, 3-1 Nishi-Shinjuku 2-chome, Shinjuku-ku, Tokyo 163-0914, Japan
OLYMPUS MEDICAL SYSTEMS EUROPA GMBH
Postfach 10 40 08, 20034 Hamburg / Wendenstrasse 14-18, 20097 Hamburg, Germany
OLYMPUS AMERICA INC.
3500 Corporate Parkway, P.O. Box 610, Center Valley, PA 19034-0610, U.S.A.
OLYMPUS SURGICAL & INDUSTRIAL AMERICA INC.
One Corporate Drive, Orangeburg, New York 10962, U.S.A.
OLYMPUS LATIN AMERICA, INC.
501 Blue Lagoon Drive, Suite 200 Miami, Florida 33129-2097, U.S.A.
KEYMED LTD.
Keymed House, Stock Road, Southend-on-Sea, Essex SS2 5QH, England

OLYMPUS SINGAPORE PTE LTD.
491B River Valley Road #12-01/04, Valley Point Office Tower, Singapore 248373
OLYMPUS HONG KONG AND CHINA LIMITED
Room 1501-1507, Cosco Centre, 5 Canton Road, Tsimshatsui, Kowloon, Hong Kong
OLYMPUS (BEIJING) SALES & SERVICE CO., LTD.
Room 1202, NCI Tower, A12 Jiaogongmian Avenue Chaoyang District Beijing, 100522, China
OLYMPUS MOSCOW LIMITED LIABILITY COMPANY
117071, Moscow, Malaya Kaluzhskaya 19, bld. 1, fl.2, Russia
OLYMPUS AUSTRALIA PTY LTD
31 Gibby Road, Mount Waverley, VIC, 3148, Australia

www.olympus.com

OLYMPUS

Your Vision, Our Future

EVIS
EXERA II

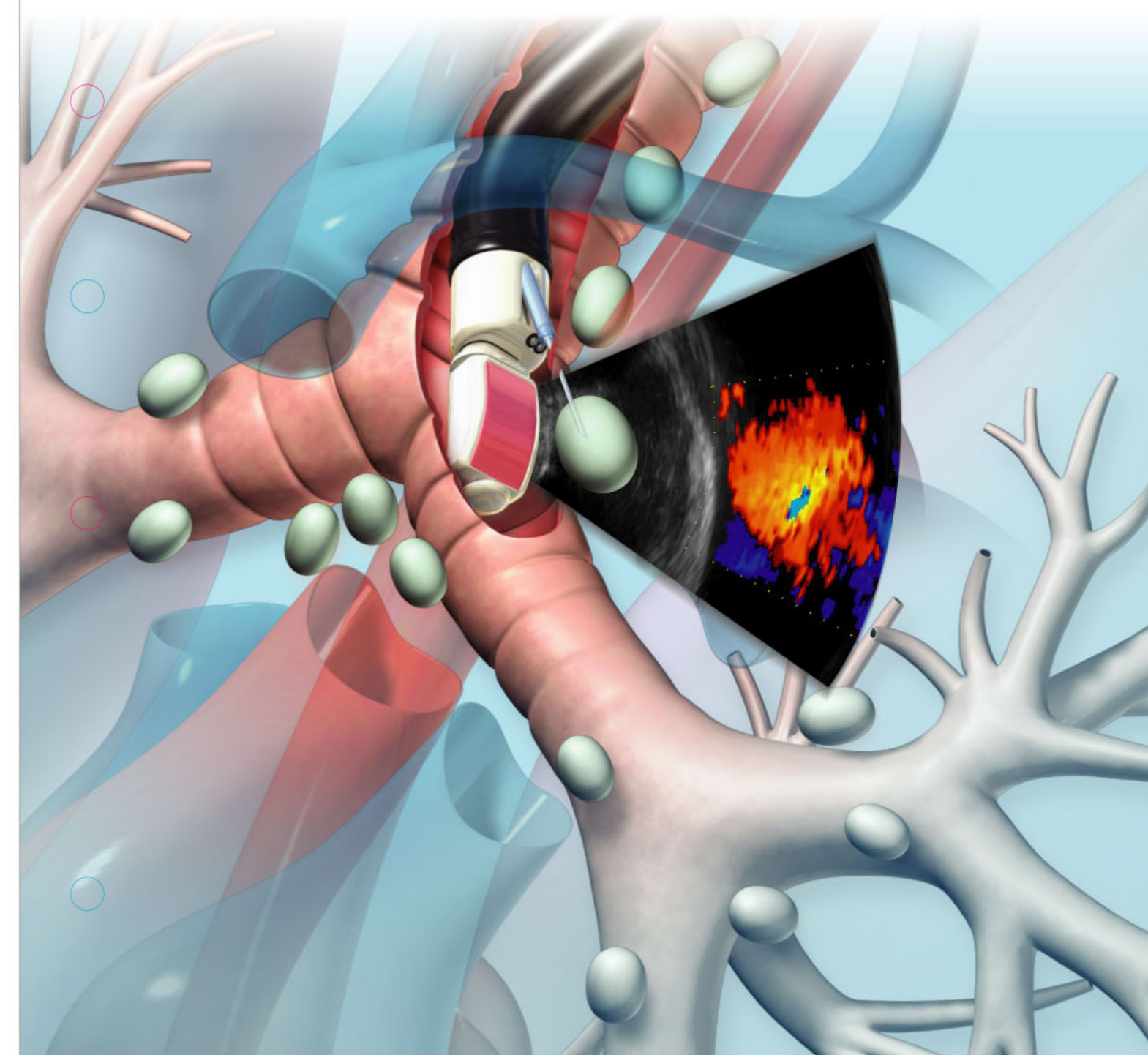
EVIS EXERAII ULTRASONIC BRONCHOFIBERVIDEOSCOPE

OLYMPUS **BF** TYPE **UC180F**



EBUS-TBNA

Setting a new standard for diagnosis and staging in the lung



Innovative scope design helps you take advantage of superior ultrasound imaging for EBUS-TBNA.

Compatible with Olympus' popular EU-C60 compact ultrasound processor as well as Aloka's industry-leading ProSound Alpha 5, this new EBUS-TBNA system makes biopsies safer and more accurate than conventional blind TBNA, and offers an alternative to mediastinoscopy.

The BF-UC180F clearly visualizes the dedicated echogenic aspiration needle via ultrasound imaging.

With the introduction of this versatile EBUS-TBNA system, Olympus is making an important contribution to improved staging and diagnosis of lung cancer.

4R

4L

7

11L

Wide 2.2 mm diameter channel and innovative detachable ultrasound cable

Features

- Channel diameter enlarged to 2.2 mm for improved suction capability and device insertion.
- Convenient new scope design with detachable ultrasound cable makes it possible to use the same scope with either Olympus EU-C60 or Aloka ProSound α5. Just connect the cable to the system you want to use.
- Wider scanning and higher resolution image, plus higher sensitivity Doppler function available with ProSound α5.
- Detachable cable simplifies cleaning and facilitates easier placement into an automatic endoscope reprocessor.
- Innovative "hybrid" design combines video and fiberoptic technologies in a single scope, offering the same functionality as videoscopes yet with a slim insertion tube diameter of only 6.2 mm*, even with an incorporated ultrasound transducer.

*Distal tip diameter measures 6.9 mm.

EVIS EXERAII ULTRASONIC BRONCHOFIBERVIDEOSCOPE
OLYMPUS **BF** TYPE **UC180F**

HYBRID SCOPE

Now a choice of two high-performance ultrasound processors



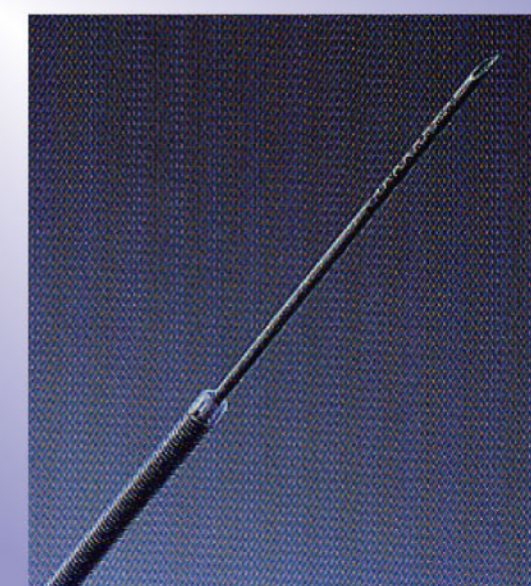
ALOKA DIAGNOSTIC ULTRASOUND SYSTEM ProSound α5

- Higher resolution and wider 60-degree scanned image
- Quad frequency imaging
- Tissue Harmonic Echo
- Higher sensitivity Color and Power Doppler
- Dual Dynamic Display
- DICOM compatible digital data output.



EUS EXERA COMPACT ENDOSCOPIC ULTRASOUND CENTER EU-C60

- Compact and easy-to-use
- Color Power Doppler
- Switch between ultrasound and endoscopic images on the same monitor



SINGLE USE ASPIRATION NEEDLE NA-201SX-4022

Echogenic dimpled needle tip for improved visibility on ultrasound images



- #### Features
- Specifically designed for use with EBUS-TBNA scopes
 - 22-gauge outer diameter
 - Adjustable needle length
 - Pre-sterilized and single-use

ViziShot