

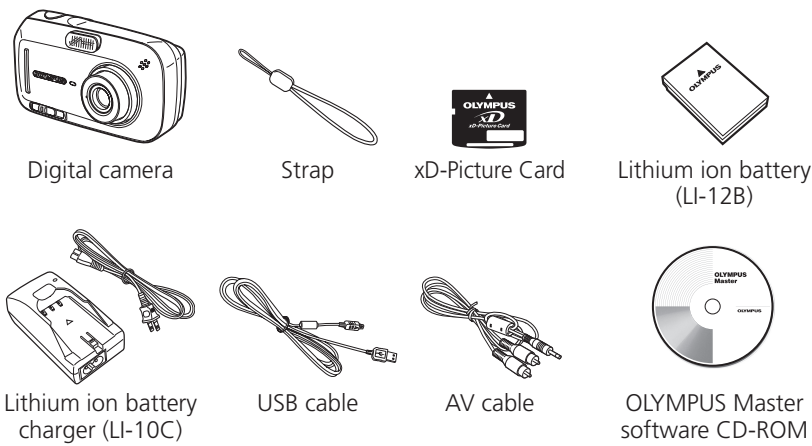
It is strongly recommended that you follow these step-by-step instructions to set up and quickly begin using your new Digital Camera.

STEP

1

## UNPACK THE BOX CONTENTS

Please gather the items shown in the illustration. You'll need these to complete the procedures that follow.



The following items are also included in the Digital camera package: Basic manual, warranty card, Advanced manual on CD-ROM and registration card.

STEP

2

## REVIEW THE DOCUMENTATION

**Quick Start Guide** (this document)  
Getting started with your digital camera.

**Quick Reference Guide** (reverse side of this document)  
Quick guide to using common features and functions.

**Basic Manual** (printed booklet)  
Guide to mastering the basics of taking and viewing pictures.

**Advanced Manual** (CD-ROM)  
Detailed instructions on all camera features and functions.

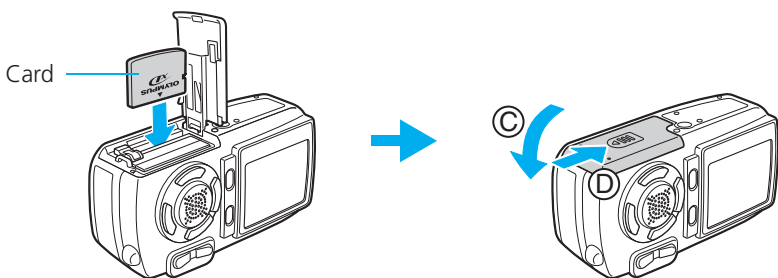
**Software Installation Guide** (Separate document on OLYMPUS Master CD-ROM)  
Detailed instructions on installing the OLYMPUS Master software.

STEP

4

## INSERT THE xD-PICTURE CARD

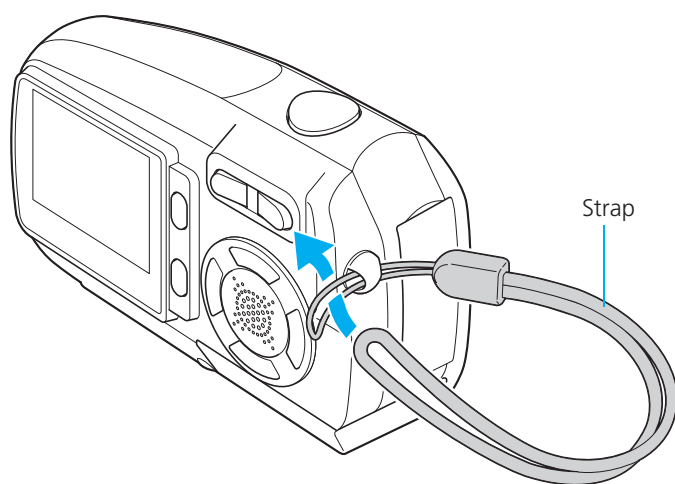
- Orient and insert the xD-Picture Card into the card slot.
- Close the battery compartment/card cover in the direction of and slide in the direction of .



STEP

5

## ATTACH THE STRAP

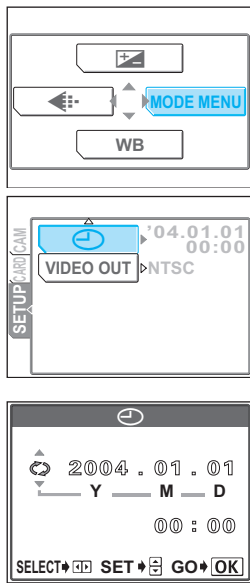


STEP

7

## SET THE DATE AND TIME

- With the camera on, press the OK/MENU button.
- Press (arrow pad) to select [MODE MENU].
- Select the [SETUP] tab and press . Select and press .
- Select the date format and press .
- Use or to set each item and press to move to the next item.
- Press the OK/MENU button when you have finished entering the date and time.

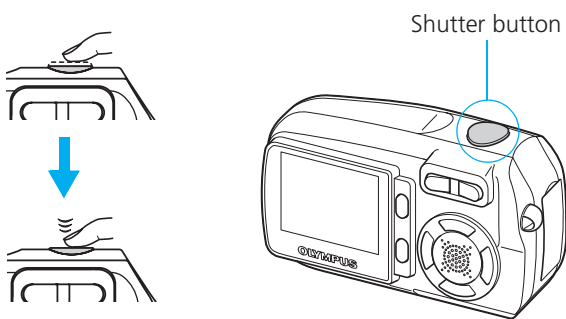


STEP

8

## TAKING A PICTURE

- Place the AF target mark on your subject using the monitor.
- Press the shutter button halfway to lock the focus and exposure, then press the shutter button completely to take the picture.

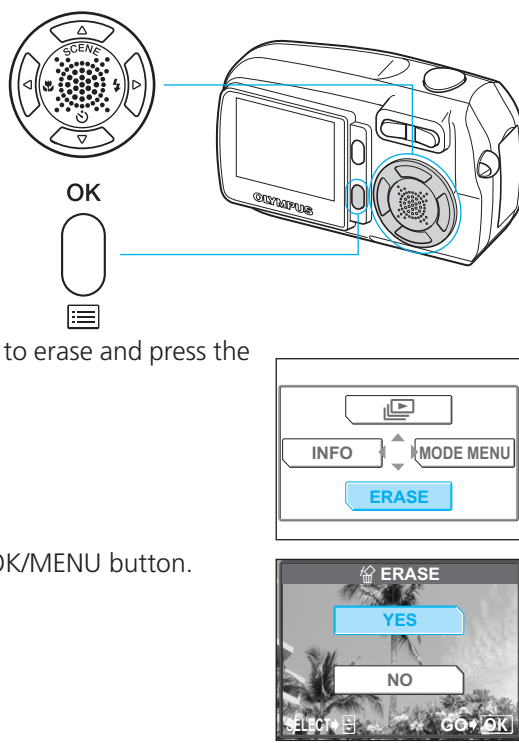


STEP

10

## ERASING A PICTURE

- Select the picture you want to erase and press the OK/MENU button.
- Press to select [ERASE].
- Select [YES] and press the OK/MENU button.

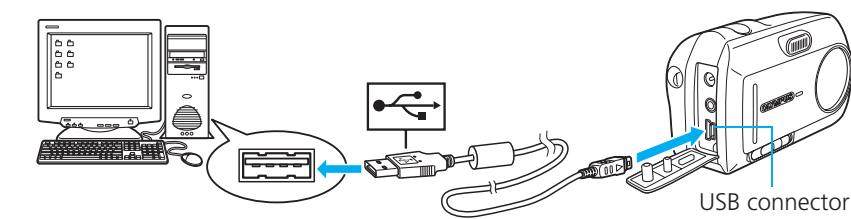


STEP

11

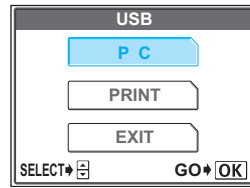
## CONNECTING THE CAMERA TO A COMPUTER

- Connect the one end of the USB cable (included) to the computer.



- Connect the other end of the USB cable to the camera.

- Select [PC] on the camera's monitor and press the OK/MENU button.



STEP

13

## ABOUT THE CD-ROM DISCS

You've now mastered the basic functionality of your new Olympus Digital Camera! You are ready to begin exploring the possibilities that digital photography brings to your computer. Activities such as photo editing, printing and much more are only steps away!

**CD-ROM1**  
**OLYMPUS Master software:** To transfer pictures from the camera, view, organize, retouch, e-mail and print your digital photos and movies and more! This CD also contains the complete software user's manual in Adobe Acrobat (PDF) format.

**CD-ROM2**  
**Advanced Manual:** A complete camera guide in Adobe Acrobat (PDF) format. This manual contains detailed instructions on the camera's features and functions which are not covered in the printed Basic Manual or Quick Start/Quick Reference Guides.

STEP

14

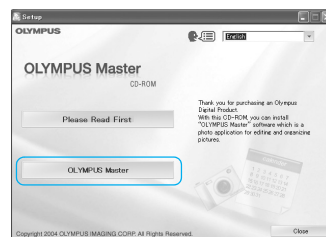
## INSTALLING THE CAMERA SOFTWARE

- Insert the OLYMPUS Master CD-ROM into your computer's CD-ROM drive.

- [For Windows]  
Click the [OLYMPUS Master] button in the Setup window.

[For Macintosh]  
Double-click the [Installer] icon.

- Follow the on-screen instructions. For more details, click [Please Read First].



Please refer to the Quick Reference Guide on the reverse side of this sheet to familiarize yourself with the commonly used features and functions of your new Olympus Digital Camera.



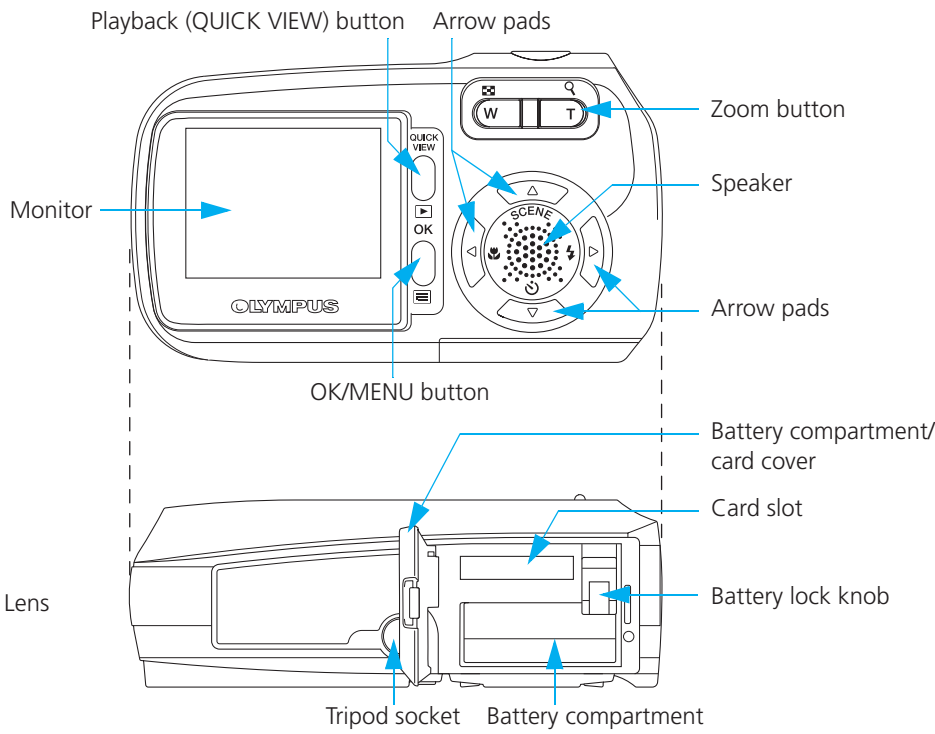
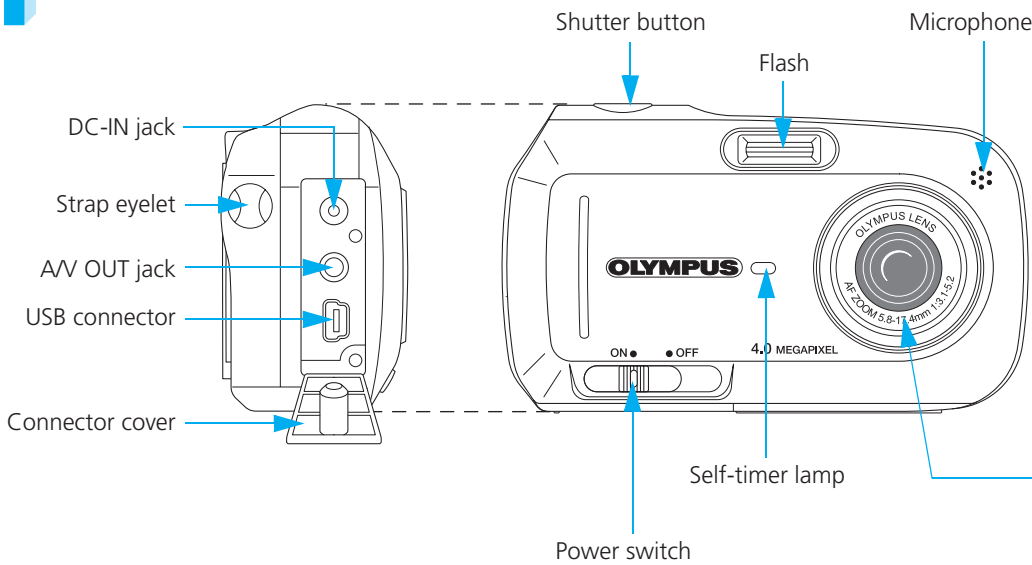
# Quick Reference Guide

## D-590 ZOOM

### INDEX

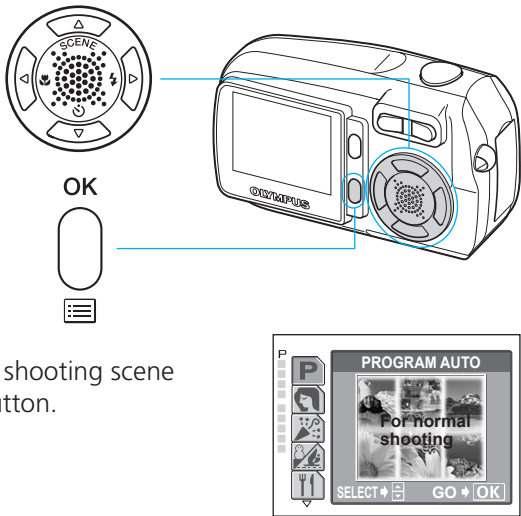
1. Camera Diagram and Controls
2. Shooting Scene Modes
3. Using the Zoom
4. How to Use the Autofocus (Focus lock)
5. Flash Modes
6. Image Quality Modes
7. Recording a Movie
8. Viewing Pictures/Movies on a TV
9. How to Erase All Pictures
10. E-mailing a Picture
11. Printing a Picture

## 1 CAMERA DIAGRAM AND CONTROLS



## 2 SHOOTING SCENE MODES

a. Press **SCENE** in shooting mode.



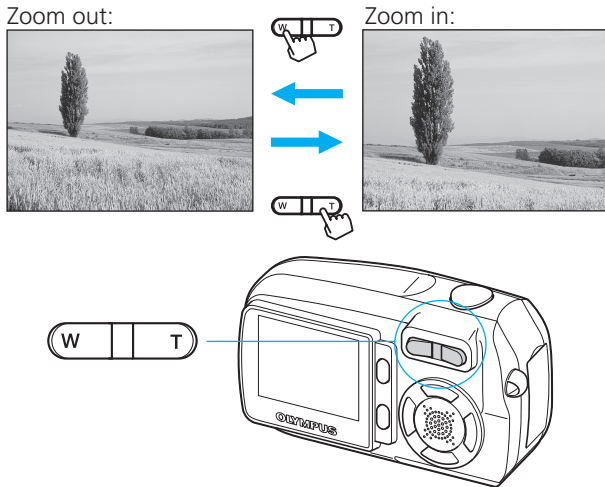
b. Press **OK** or **OK/MENU** to select a shooting scene mode (there are 10 shooting scene modes) and press the OK/MENU button.

### Shooting Scene Mode Descriptions

- PROGRAM AUTO P**  
The camera automatically selects the optimal settings.
- LANDSCAPE + PORTRAIT**
- LANDSCAPE**
- NIGHT SCENE**
- SELF PORTRAIT**
- MOVIE**
- BEACH & SNOW**
- INDOOR**
- CUISINE**

## 3 USING THE ZOOM

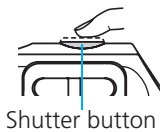
This camera features a zoom lens, letting you get closer to the subject or capture wide-angle shots.



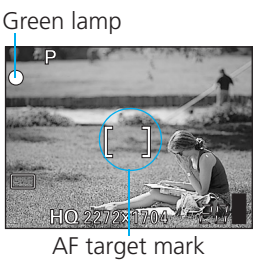
- Press W to zoom out and get everything into the picture.
- Press T to zoom in and get closer to the subject.

## 4 HOW TO USE THE AUTOFOCUS (FOCUS LOCK)

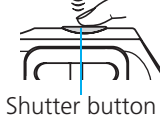
a. While positioning the AF target mark over the subject in shooting mode, press and hold the shutter button halfway.



b. The green lamp indicating that the focus and exposure are locked remains lit as long as the shutter button is kept depressed. While pressing the shutter button half way, recompose your shot.



c. Press the shutter button completely to take the picture.

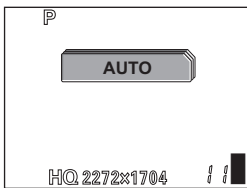


## 5 FLASH MODES

This camera features multiple flash modes. You can select the appropriate flash mode to suit the situation.

- AUTO**  
The camera decides if the flash is needed.
- RED-EYE REDUCTION** - Reduces the incidence of red-eye by emitting pre-flashes to shrink pupil size before taking the picture.
- FILL-IN FLASH** - The flash always fires. Suitable for taking subjects lit from behind by strong light.
- FLASH OFF** - The flash is turned off. Suitable for when flash photography is not permitted.

a. Press **FLASH** repeatedly in shooting mode to toggle through the flash settings.



## 6 IMAGE QUALITY MODES

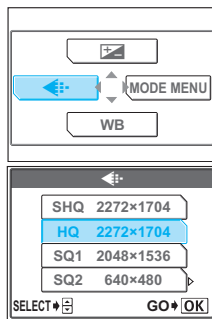
Your camera is equipped with multiple image quality modes, which determine the quality and file size of the pictures you take. Below is a general description of the commonly used modes. For the detailed description of all quality modes, refer to the Advanced manual included on the CD-ROM.

Record Mode	File size	Usage Examples
SHQ (Super High Quality)	Large	For making large prints
HQ (High Quality)	Medium	For printing in postcard size
SQ1 (Standard Quality)	Small	For printing 3"x5" prints
SQ2 (Standard Quality)	Small	For small prints, web, or e-mailing

a. Press the OK/MENU button in shooting mode.

b. Press **OK/MENU** to select **MODE MENU**.

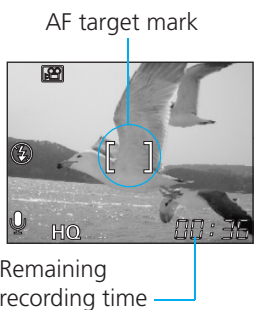
c. To select the record mode, press **OK/MENU** and press the OK/MENU button.



## 7 RECORDING A MOVIE

a. Press **SCENE** in shooting mode and select **MOVIE** (**MOVIE**) by pressing **OK/MENU**, then press the OK/MENU button.

b. Position the AF target mark over the subject. Press and hold the shutter button halfway down until the green lamp lights.



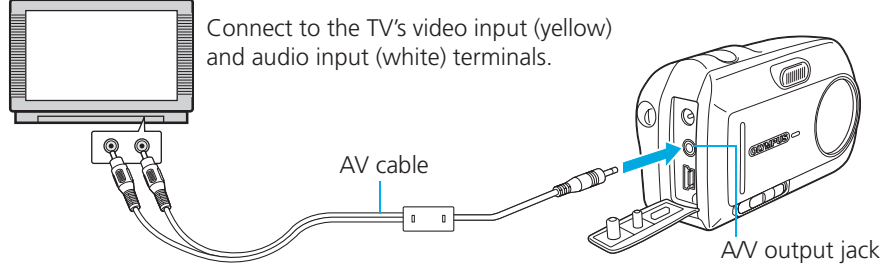
c. Press the shutter button the rest of the way to start recording (video and audio).

d. Press the shutter button again to stop recording.

Note: The optical zoom system cannot be used. When you want to use the zoom system, select **[ON]** in the **[DIGITAL ZOOM]** settings. See the Advanced manual on how to make further settings.

## 8 VIEWING PICTURES/MOVIES ON A TV

a. Make sure that the camera and TV are off. Connect the camera to the TV using the AV cable (included).



b. Turn on the TV and set to "video input."

c. Press the playback (**PLAY**) button to turn the camera on and use the arrow pads to display the picture you want to view.

Note: If the pictures are not displayed, consult your TV manual to set up the video source.

## 9 HOW TO ERASE ALL PICTURES

**WARNING - PERFORMING THESE STEPS WILL DELETE ALL PICTURES EXCEPT PROTECTED ONES STORED IN YOUR CARD!**

a. Press the OK/MENU button in playback mode.

b. Use the arrow pads to select **[MODE MENU]** on the monitor.

c. Select the **[CARD]** tab and press **OK/MENU**. Select **[ALL ERASE]** and press **OK/MENU**.

d. Select **[YES]** and press the OK/MENU button.



## 10 E-MAILING A PICTURE

Using the OLYMPUS Master software (included), you can share your pictures with others by using the built-in e-mail feature.

After installing OLYMPUS Master, open the program and click the **[Browse Images]** icon. From the **[Browse Images]** window, select the picture(s) you want to send and click the **[E-mail]** tool button.

At this time, you can resize your pictures making them more manageable to e-mail. This helps you to stay within the e-mail capacity limitations set by your e-mail provider.

When finished, click the **[Launch Mailer]** button at the bottom of the window. Your default e-mail program will open and the selected picture(s) will automatically be attached to a new message.

## 11 PRINTING A PICTURE

Using the OLYMPUS Master software (included), you can make prints of your pictures using your own photo printer.

After installing OLYMPUS Master, open the program and click the **[Print Images]** icon on the main menu. You can create many different types of prints such as an index print, photos, albums, or calendars. Simply select the image(s) and add them to one of the many layouts within OLYMPUS Master. For detailed instructions, please refer to the "Help" menu in the software.

Alternatively, you can print your pictures by connecting your PictBridge\* compatible camera directly to a PictBridge compatible printer, such as the Olympus P-10 Digital Photo Printer. This permits fast, easy printing without using a computer.

You may also order prints online using the "Print Online" feature in OLYMPUS Master software.

\* For detailed instructions on using PictBridge, please refer to your camera's Advanced manual included in digital format on the CD-ROM.

## CONTACT INFORMATION

### OLYMPUS IMAGING AMERICA INC.

Two Corporate Center Drive, PO Box 9058, Melville, NY 11747-9058

### Technical Support (USA):

24/7 online automated help: <http://www.olympusamerica.com/support>  
Phone customer support: 1-888-553-4448 (toll free)

Our phone customer support is available from 8am - 10pm (Monday to Friday) ET

E-mail: [distec@olympus.com](mailto:distec@olympus.com)

Olympus software updates can be obtained at: <http://www.olympus.com/digital>

**OLYMPUS**