



User's Guide



Shop online at

omega.com[®]

Ω OMEGA[®]

www.omega.com

e-mail: info@omega.com

ISO 9001
CERTIFIED
CORPORATE QUALITY
STAMFORD, CT

ISO 9002
CERTIFIED
CORPORATE QUALITY
MANCHESTER, UK

**OM8800D, OM88128, OM8828,
OM8829, AND INTERFACE
Temperature/Humidity Data Logger**



OMEGAnet® On-Line Service
www.omega.com

Internet e-mail
info@omega.com

Servicing North America:

USA: ISO 9001 Certified
One Omega Drive, Box 4047
Stamford CT 06907-0047
Tel: (203) 359-1660
FAX: (203) 359-7700
e-mail: info@omega.com

Canada:
976 Bergar
Laval (Quebec) H7L 5A1
Tel: (514) 856-6928
FAX: (514) 856-6886
e-mail: info@omega.ca

For immediate technical or application assistance:

USA and Canada:

Sales Service: 1-800-826-6342 / 1-800-TC-OMEGA®
Customer Service: 1-800-622-2378 / 1-800-622-BEST®
Engineering Service: 1-800-872-9436 / 1-800-USA-WHEN®
TELEX: 996404 EASYLINK: 62968934
CABLE: OMEGA

Mexico:

En Español: (001) 203-359-7803
FAX: (001) 203-359-7807
e-mail: espanol@omega.com
info@omega.com.mx

Servicing Europe:

Benelux:

Postbus 8034, 1180 LA Amstelveen
The Netherlands
Tel: +31 (0)20 3472121 FAX: +31 (0)20 6434643
Toll Free in Benelux: 0800 0993344
e-mail: sales@omegaeng.nl

Czech Republic:

Rudé armády 1868, 733 01 Karviná 8
Tel: +420 (0)69 6311899
FAX: +420 (0)69 6311114
Toll Free: 0800-1-66342 e-mail:
czech@omega.com

France:

9, rue Denis Papin, 78190 Trappes
Tel: +33 (0)130 621 400
FAX: +33 (0)130 699 120
Toll Free in France: 0800-4-06342
e-mail: sales@omega.fr

Germany/Austria:

Daimlerstrasse 26, D-75392
Deckenpfronn, Germany
Tel: +49 (0)7056 9398-0
FAX: +49 (0)7056 9398-29
Toll Free in Germany: 0800 639 7678
e-mail: info@omega.dl

United Kingdom: ISO 9002 Certified

One Omega Drive
River Bend Technology Centre
Northbank, Irlam
Manchester M44 5BD
United Kingdom
Tel: +44 (0)161 777 6611
FAX: +44 (0)161 777 6622
Toll Free in United Kingdom:
0800-488-488
e-mail: sales@omega.co.uk

It is the policy of OMEGA to comply with all worldwide safety and EMC/EMI regulations that apply. OMEGA is constantly pursuing certification of its products to the European New Approach Directives. OMEGA will add the CE mark to every appropriate device upon certification.

The information contained in this document is believed to be correct, but OMEGA Engineering, Inc. accepts no liability for any errors it contains, and reserves the right to alter specifications without notice.

WARNING: These products are not designed for use in, and should not be used for, patient-connected applications.

I N D E X

Introduction.....	1
Material supplied.....	2
Features.....	3
Front View	4
LCD display (Model OM8828 / Om8829).....	5.....
Battery replacement.....	6
Software Installation	7
Main screen & introduction.....	8-10
Retrieve File.....	11-12
Save File.....	13
Comport Setup.....	14
Logger setting.....	15
A) Sample point setup.....	15
B) Sample rate.....	16
C) Start mode set up.....	16
D) Logger's clock setting.....	17
E) Alarm setting.....	18
F) Unit setting ,Logger ID setting.....	19
G) Sleep Mode setting & Data Table.....	20
Data Table : Edit (Go to ,Find ,Sort) ,Copy	21-24
Statistics.....	25-28
Print Graph.....	29
Group Files.....	30-31
Previous setting, Temperature Chart, Cursor status.....	32
Blank logo, Message.....	33
Download commands.....	34
Display control.....	34-37
General Specification.....	38-39
F.A.Q. Warranty and Return Authorization.....	40

INTRODUCTION

Thank you for purchasing this Temperature Data Logger! This unit has been developed to meet your maximum satisfaction with its user-friendly design. Review the entire manual for a complete overview of the operation of this new data logger.

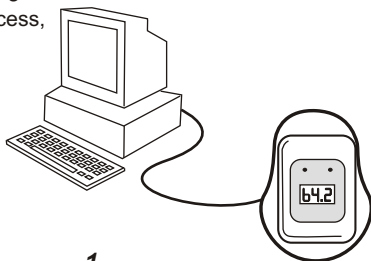
You may also review the manual from Autoplay Menu, double click "**Run software, Manual (PDF)**" and peruse every procedure and function step by step. The logger is very easy-to-use.

The software is used to readout the stored data and see as a graph, showing the history with real-time clock, the tabular data can be viewed or exported to a spreadsheet for various analysis.

One interface can be used with multiple loggers, designed as a saving cost unit. There are 3 color of interfaces for choice: White, Dark Blue, Burgundy.

IDEAL FOR APPLICATION:

Monitoring Ambient condition in Greenhouses, Warehouses, Food transport, Aircraft cabins, refrigerate truck, containers, railwayArt galleries and Museum, incubation process, Hatcheries, HVAC field (Heat, Ventilation, Air Conditioning), collecting data for QC.....



Before starting the logger setting ,please read throughly the whole operation manual , there are some FAQ listed in some pages for troubleshooting reference.

MATERIAL SUPPLIED

Check for damaged or missing parts in your data logger before starting:

The Data Logger Set should contain:

1. Either one of the following :

Model: OM8800D ,OM88128 or OM8828 or OM8829 The Data Logger (supplied with one CR2 or ER3, 3.0V lithium battery).

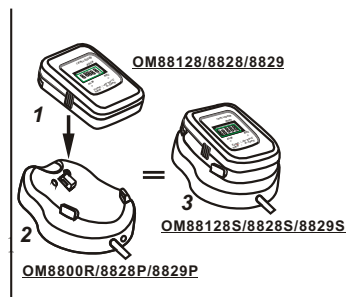
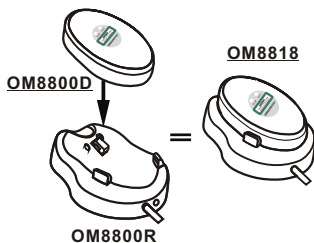
Model: OM8800R(White) ,OM8828P(Dark blue), OM8829P (Burgundy)

The Interface cable & software.

Model:OM 8818 ,OM88128S or OM8828S or OM8829S

The complete set including data logger with lithium battery , interface cable and software.

2. Operation manual



FEATURES

- Up to 8000 sample readings (OM8800D) with real-time clock memory.
- Up to 16,000 sample readings (OM88128 / 8828 / 8829) with real-time clock memory.
- LCD display of data (Model # OM8828/8829).
- Programmable sample interval from 1 second to 2 hours.
- Temperature unit: °C / °F selectable.
- User-defined maximum and minimum alarm.
- Built-in real-time clock.
- Schedule start / stop time setting or Magnetic start setting.
- Programming with RS-232 interface.
- Data retained when battery is low or has been removed.
- Waterproof housing design.(Model OM8800D / 88128 / 8828).
Water resistant design (Model OM8829).
- Hanger at the rear upper for hanging on the wall to prevent losing or falling down .
- One Interface cable and software can be used with several loggers to save cost.
- Download data to other program for further analysis.
- All data is saved in text format and can be easily transformed into Microsoft Office® applications.
- Easy to use Software provides :Retrieve file , Save file , Logger setting , Comport setting , Group file , Print graph , Data table list , Statistic
- Sleep mode and Non-Sleep mode to be selectable to monitor current condition of Temperature or Humidity (LCD models)

FRONT VIEW

REC - Stands for RECORD

For model without LCD : OM8800D or OM88128

"REC" is flashing while logging the temperature records

"REC" LED will stop flashing after complete recorded or battery is out of power .

REC green light will flash every second (OM8800D) .

REC green light will flash every 5 seconds when sample interval is set over 5 seconds (OM88128) .

For model with LCD : OM8828 or OM8829

Both "REC" green light and "REC" indicator will active and display on the screen per every set sample interval . For example , if you set sample interval less than 5 seconds , the REC light will flash per set second , otherwise, will flash every 5 seconds .

ALM - Stands for ALARM

"ALM" is flashing while recorded value is higher than set HI or less than LO setting , the logger alarm designed is not audible , but for reminding or warning the user to do necessary action .

For model without LCD : OM8800D or OM88128

"ALM" "ALM" LED will stop flashing after downloading to a PC or battery is out of power .

ALM red light will flash every second (OM8800D) .

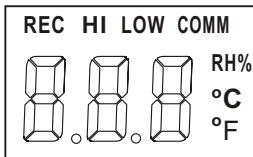
ALM red light will flash every 5 seconds when sample interval is set over 5 seconds (OM88128) .

For model with LCD : OM8828 or OM8829

Both "ALM" red light and "ALM" indicator will active and display on the screen per every set sample interval . For example , if you set sample interval less than 5 seconds , the ALM light will flash per set second , otherwise, will flash every 5 seconds .

LCD DISPLAY

Model: OM8828 / OM8829



- REC** - **"REC"** is displayed while logging the temperature or humidity. REC will not appear when in the Non-sleep mode.
When sample interval set over 5 seconds , REC LED will every 5 seconds , set less than 5 seconds , REC green LED will flash per sample interval , such as 1,2,3, or 4.
- HI** - **"HI"** is displayed and alarm LED is flashing if a temperature/or humidity is higher than set High value in the logger unit .
- LOW** - **"LOW"** is displayed while logged temperature is lower than set Low value in the logger unit .
- RH%** - Display Relative Humidity %.(Though you might have seen **RH%** when replacing with a new battery , which is not available for the model 8828 but model 8829 Temperature/ Humidity datalogger .)
- °C** - Temperature displays reading in Celsius
- °F** - Temperature displays reading in Fahrenheit
- COMM** - When communicating with computer ,**"COMM"** is shown at the top of the screen.

BATTERY REPLACEMENT

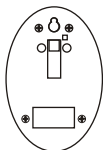
The dataloggers are designed with a waterproof housing, and allow the user to replace battery when it has expired .You will see "Lo" appeared on the display when battery is weak for model OM8828 and OM8829..



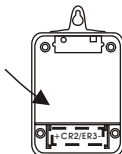
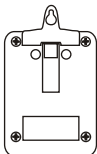
Follow the steps to remove and replace battery:

1. Unscrew the datalogger from the rear side .
2. Do not remove o-ring but make sure the o-ring is in its place (groove).
3. Remove the expired battery
4. Insert a new battery CR3 or ER2, make sure the battery is inserted with correct polarity.
5. Re-screw the rear cover with screwdriver .

Model:
OM8818



Model:
OM88128
OM8828
OM8829

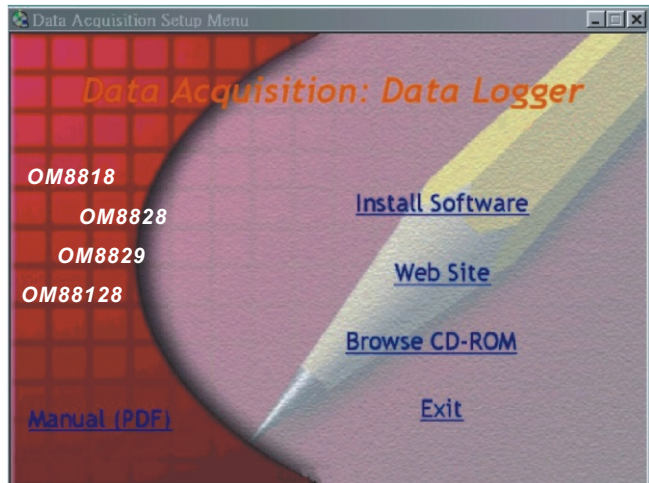


SOFTWARE INSTALLATION

Microsoft® Office is a registered trademark of Microsoft Corporation.

Installation procedure :

1. Slide the logger unit onto the RS232 interface.
2. Connect the socket of RS232 to the COM1 or COM2 .
3. Insert CD-ROM to the computer for starting software set up:
4. See the diagram as an example of 8818 Temp. logger :
 - a).**Run Software.** To run software from CD-Rom.(Or read manual)
 - b).**Install Software.** Run the set up installation program.
 - c).**Brow CD-ROM.** Browse the CD-Rom using Windows.
 - d).**Web Site.** Visit our web site in your browser.
 - e).**Exit.** Close this menu system.



MAIN SCREEN

The data logger program is easy to operate from its main screen.

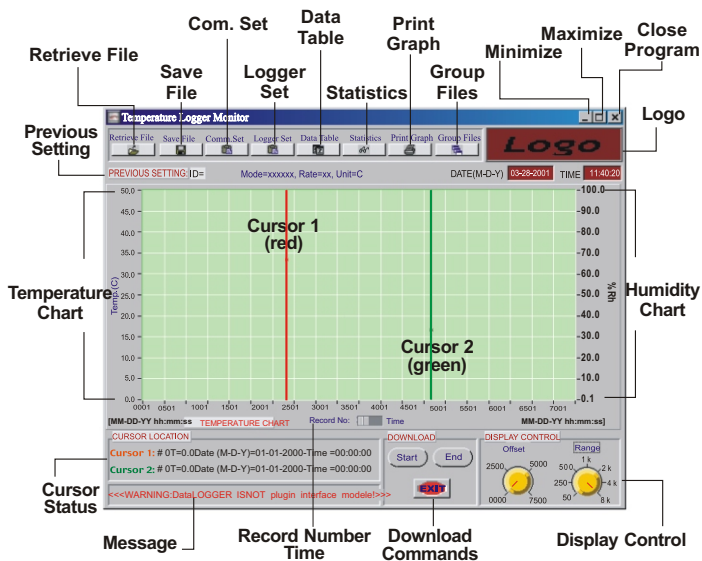


Diagram A: Main Screen

Keyboard Actions for Cursor

Make sure you have selected a cursor, when you click the red vertical line, it turns bold red line, the same for green line. You will see the numbers at the left lower part changed while pressing arrow left or down arrow key for last record or pressing right or up arrow key for next record.

Left arrow key	To the previous point on the current plot.
Right arrow key	To the next point on the current plot.
<Shift>-left arrow key	Back 10 points on the current plot.
<Shift>-right arrow key	Forward 10 points on the current plot.
<Home>	To the first Visible point on the current plot.
<End>	To the last visible point on the current plot.

FAQ: Why can't I see the movement by pressing above keys ?

Ans : Make sure the bottom right corner "Display Control - Offset " figures are not in black , if it is yellow button , please click other area to restore to the original black .

Drag a cursor to move it.

The cursor tracks the mouse until you release the mouse button, and then the cursor snaps to the nearest data point.

Actions by Offset Knob

You can operate on graph from the "Offset Knob" after pressed "Offset Knob" in the following ways :

Press the up ▲ or down ▼ arrow key to increase or decrease one record number (or corresponding to date) in the graph .

Zooming and Panning on Graphs

To start zooming in on a point, press the <Ctrl> key and click on the left mouse button over the point; you can release the <Ctrl> key after you press the mouse button. The resolution in the viewport is increases dynamically until you release the mouse.

To zoom out, click on the right mouse button, and then press the <Ctrl> key as you do to zoom in.

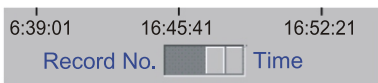
To pan, press the <Ctrl-Shift> keys and click on the left mouse button over a point on the viewport. Then drag the mouse to another point.

The graph viewport scrolls so that the original point now appears under the new mouse cursor location. You can drag the mouse anywhere on the screen, even beyond the viewport.

To restore the viewport to its original state after zooming or panning . Press and hold the left mouse to drag the yellow line from " Offset knob " and "Range knob" .

Data record number or Time display selection

Press the switch button and select between Record number and Time (xx : xx : xx) the hour , minute , second . The record number and time will display in turn while pressing the switch button .



Warning message

The left bottom corner will show a warning message while you just retrieve an existing file without downloading a new logger.

<<< WARNING : Data Logger is not plug in interface module !>>>

<<< WARNING: Data Logger is not plug in interface module ! >>>

Display Control

After your downloading or retrieving a record , you will see the number on the knobs of "Offset" and "Range" be changed to Offset: 0000/5000/10000/15000 and Range:50/250/500/1K/2K/4K/8K/12K/16K. These are different from main screen without any records displayed.

RETRIEVE FILE

Click on icon to retrieve and to load a data file into this program.
(See **Diagram B.**) This program is designed to log up to 8,000 / 16,000 sample readings.(Model OM88128/ OM8828/ OM8829 are available for 16,000 sample collecting)

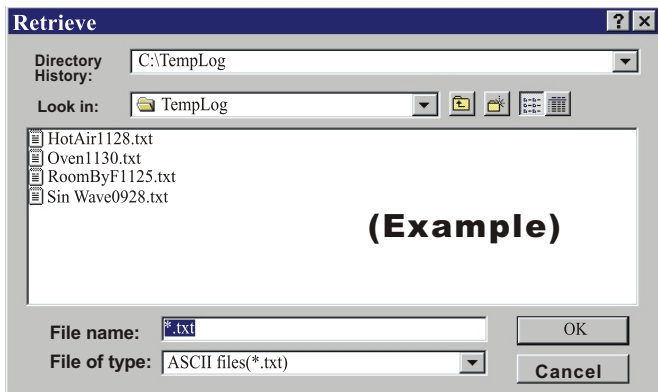


Diagram B: Retrieve File

NOTE:

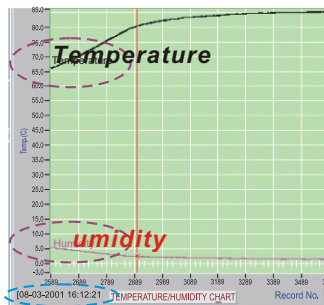
Above file names are the examples to help you understanding what screen will be .**Don't be alarmed if you couldn't see the files shows on your software .**

Open data file "**RoomByF1125.txt** " for test file. See **Diagram C** for an example of data in file :

To aid in reading a graph , a grid can be drawn on the graph, and a dialogue box display at the left bottom corner shows the appearance of this grid.(CONTROL LOCATION-Cursor 1 and Cursor 2).

After you downloading from model OM8829 or retrieving a file with Humidity records, you will find " Temperature " and " Humidity " indicated on the start point of curves . (See Dia.B-1) Otherwise, you will only one curve indicated Temperature .

➡ **Diagram B-1:**
Retrieve File



For model OM8818,OM88128,OM8828,you will not see RH% on the right side of the screen but only model OM8829 .(See Dia.B-2)

Meantime, you will see the date and time of the first point at the left corner , and see the last point date and time at the right corner . (See Dia. B-1 and Dia.B-2 in blue)

➡ **Diagram B-2:**
Retrieve File

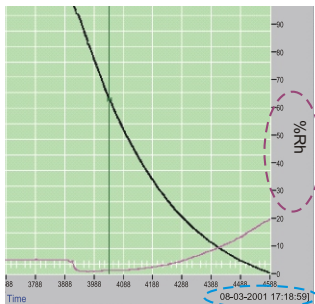
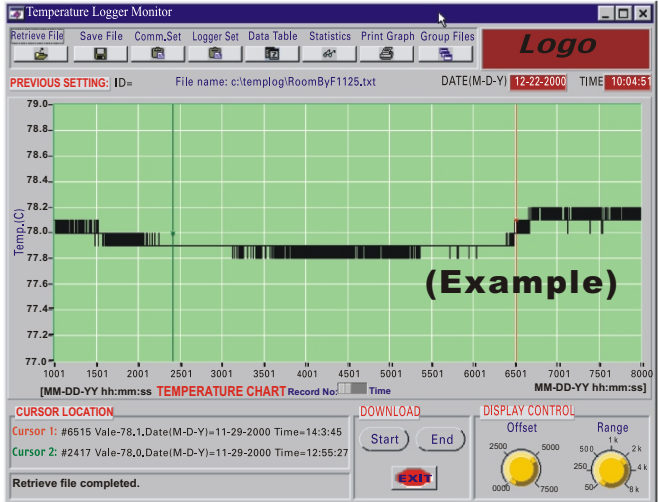
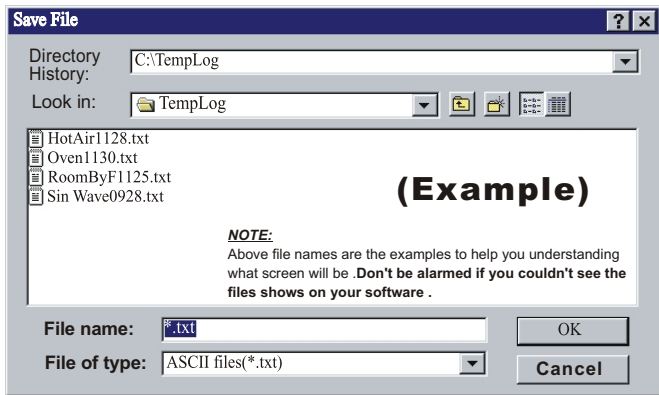


Diagram C: Main Screen with Sample Data



SAVE FILE

Selecting icon, select folder and name to save the data to be saved. The windows " Save File " dialog box allows you to specify the file format to save the data,the file name to be called , where the file to be saved to .



COM PORT. SETUP

Select icon for "**Com. Port Setting**". (See [Diagram D](#)). Set correct COM port, Baud rate, Data bits, Parity and Stop bits.

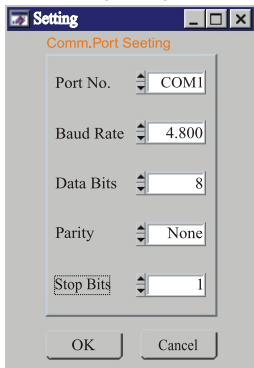
Usually, it's **COM1** for most notebook and desktop computers.

Select up to **COM 4** for special systems. Select **OK** to accept setting changes, **Cancel** to abort and to exit Setting menu.

Note:

Always remember to select 4800 baud rate for model OM8818 , or select 9600 baud rate for model OM88128/OM8828/OM8829 .


Diagram D:
COM Port Setup

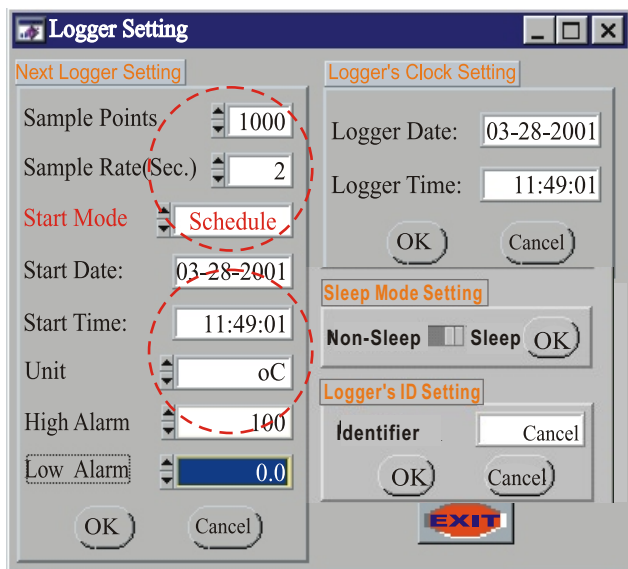


LOGGER SETTING

Depress icon to perform Next Logger Setting. (Diagram E.)

Diagram E: Logger Setting

Sample point Setup



Logger Setting

Next Logger Setting

Sample Points: 1000

Sample Rate (Sec.): 2

Start Mode: Schedule

Start Date: 03-28-2001

Start Time: 11:49:01

Unit: oC

High Alarm: 100

Low Alarm: 0.0

Logger's Clock Setting

Logger Date: 03-28-2001

Logger Time: 11:49:01

Sleep Mode Setting

Non-Sleep Sleep OK

Logger's ID Setting

Identifier: Cancel

OK Cancel

EXIT

SAMPLE POINTS SETTING -

Select sample point 1,000 / 2,000 / 4,000/ 8,000 or 12,000 / 16,000

(Note: Only OM88128, OM8828 & OM8829 are available for selecting sample point : 12,000 / 16,000).

By scrolling up or down and then click **OK** to save the selection. (See Dia-E)For example ,select **1,000 sample data**,the logger will stop collecting data and power off for saving battery when 1000 data collected completely .

Recording inactivated when selected data is full , and yellow LED light will not blink to confirm operation is stopped .

FAQ: If I want to stop logging before completing all sample points , how should I do ?

Ans: Download with computer to stop logging.

Note: The download operation before completing all sample points won't work for the logger sample rate to be set as "1" second .

SAMPLE RATE : Select the sampling time ranges from 1~7,200 seconds. Scroll up for increasing time seconds or down for decreasing time in seconds. The datalogger defaults sample rate (the length of time between each sample) as "2" though "1" is the minimum sample rate for selecting .

START MODES : (Diagram F):

▲ ***Schedule*** -

Set up **Start Date/Start** Time desired to start logging. The logger will start when the setting time clock reaches the time you entered. Make sure the logger date and time are the time you are now .

▲ ***Magnetic*** -

Link with your computer to setup the Magnetic start mode , select **Magnetic** , make sure the logger date and time are the time you are now , press "**OK**" , enter desired ID , press"**OK**" To confirm the Magnetic start setting .

▲ ***Immediate*** -

While pressing "OK" Button , the logger starts recording immediately.

To start with magnetic , use a strong magnetism one pass over the middle of the bottom , now LED is flashing .Flashing times is depend on the time interval of every sample logging.

Diagram F: Start Mode Setup

Logger Setting

Next Logger Setting

Sample Points: 1000

Sample Rate(Sec): 2

Start Mode: **Schedule**

Start Date: 03-28-2001

Start Time: 11:46:00

Unit: °C

High Alarm: 85.0

Low Alarm: -40

OK Cancel

Logger's Clock Setting

Logger Date: 03-28-2001

Logger Time: 11:46:00

OK Cancel

Sleep Mode Setting

Non-Sleep Sleep OK

Logger's ID Setting

Identifier: Cancel

OK Cancel

EXIT

LOGGER'S CLOCK SETTING

Enter your Logger's clock setting allows real-time setting for this data logger unit. See Diagram F.

ALARM SETTING

Setting up the **High Alarm** and the **Low Alarm** enables to activate the red LED flash of the Data Logger. (See Dia. G)

-High Alarm temperature defaults at 85°C.-Low Alarm temperature defaults at -40°C.

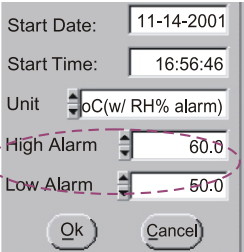
-High Alarm Relative Humidity defaults at 100% .

-Low Alarm Relative Humidity defaults at 0% .

User simply select desired High value or Low value by scrolling up for increasing or down for decreasing .

NOTE: Hi/Lo humidity setting is only available for model OM8829. Select " °F (w/ RH% alarm) or °C (w/RH% alarm) for Humidity alarm setting in degree F or degree C . (See Dia.F-1)

➔ **Diagram F-1:**
Alarm Setting



Start Date:	11-14-2001
Start Time:	16:56:46
Unit	°C(w/ RH% alarm)
High Alarm	60.0
Low Alarm	50.0
Ok Cancel	

ALM LED Flashing activation for model OM8800D . If a Temperature is higher than HI setting or less than LO setting , ALM LED will flash every second until you download to a PC .

For models OM88128, OM8828 ,OM8829 , if a temperature is higher than HI setting or less than LO setting , ALM LED will flash per every sample interval , for example , if set to 3 seconds for an interval , ALM and REC LED will flash every 3 seconds until you download to a PC .

UNIT SETTING

Data logger is available in "°C" and "°F" (See Diagram G) as well as Humidity unit "°F (w / Rh% alarm) or °C (w / Rh% alarm)" which is only available for model OM8829.

Unit

High Alarm

Low Alarm

Identifier

OK Cancel

EXIT

Diagram G: Unit setting

LOGGER ID SETTING

Logger's ID Setting enables user to give unique ID names to each data logger (up to 8-digits), simplifying data tracking.

Unit

High Alarm

Low Alarm

Identifier

OK Cancel

EXIT

SLEEP MODE SETTING

Model OM8828/OM8829 logger (LCD display) will stop displaying on the LCD after completed recording, i.e. The figures will be disappeared (This should be set up from computer before recording). Easy to click and press the slide switch to the right for **SLEEP** then click **OK** . You may select **NON-SLEEP** and press **OK** , then the logger will always display current Temperature / Relative Humidity after completed recording , but please be noted that this setting will consume the battery power . (The software default **Non-Sleep** mode)

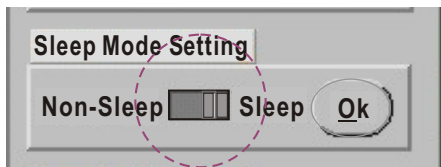


Diagram G-1:
Sleep Mode
setting

DATA TABLE

Depress icon to view detailed data table, which includes 200 sample readings. Temperature data shows the cursor 1, if you are logging model OM8829 (Temp. & Relative Humidity) , RH% reading shows next to the temperature reading .

Print out the data table to either a printer or a fax /internet application depending on your available facilities. (See Diagram H)

FAQ: Why won't data table be updated when removing the cursor ?

Ans: It is when you remove the cursor between the ranges (200 sample from cursor 1).For example : If you set number 50 record as cursor 1, the table data shows from 50 to 249 , now you remove cursor 1 within the range, the data won't be updated, unless remove the cursor 1 outside the range, i.e less than 50 or more than 249 .

No.	Date	Time	Temp(C)	Humidity(%)
123	6-29-2001	8:28:20	9.3	29.7
124	6-29-2001	8:28:21	9.3	29.7
125	6-29-2001	8:28:22	9.3	29.7
126	6-29-2001	8:28:23	9.3	29.7
		8:28:24	9.3	29.7
150	6-29-2001		9.3	29.8
151	6-29-2001	8:28:52	9.3	29.8
152	6-29-2001	8:28:53	9.3	29.8
153	6-29-2001	8:28:54	9.3	29.8
154	6-29-2001	8:28:55	9.3	29.8
155	6-29-2001	8:28:58	9.3	29.8
156	6-29-2001	8:28:56	9.3	29.7
157	6-29-2001	8:28:57	9.3	29.7

(Example)

Diagram H:

Edit Cell

You switch from selection to edit state by double-Clicking on the cell. If the active cell (in other words, the currently selected cell) can be edited, pressing <F2> also enables the edit state.(Dia. H) edit from the blue background column.

FAQ: How can I restore the original text ?

Ans: You have to retrieve the file again to restore to the original text .

Data table pop-Up Menu

If you click on the right mouse button anywhere over the table control you activate a menu which contains **Goto**, **Find**, and **Sort** menu items.

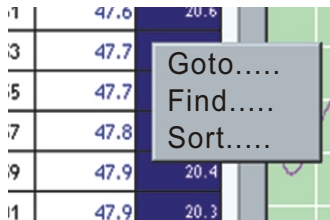
Goto You can specify a target cell to go to, using its row and column indices.

There are 4 columns for model OM8828 : No.-Date-Time-Temp.
There are 5 columns for model OM8829 : No.-Date-Time-Temp.
And Humidity(%)

A total of 200 rows from cursor 1 to cursor 2 . Key in which row and which column you want to go , then press "**OK**" , the cursor will go to the destination .

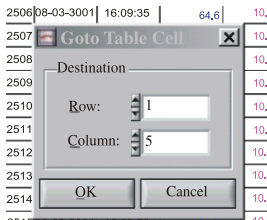
Find You can search all numeric and text cells in the entire table, or in a selection range, for a text string. After the initial search, you can press <F3> to find the next occurrence of the same text string, or you can press <Shift-F3> to search backwards for the next occurrence of the text string.

Sort If a range of cells is selected, you can sort the cells in the range using the data in one of the rows or columns as the sort key.



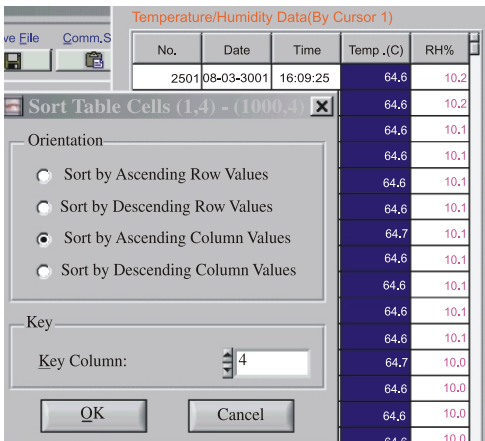
A screenshot of a data table with a context menu overlaid. The table has columns with values like 47.6, 20.6, 47.7, 47.7, 47.8, 47.9, 20.4, 47.9, 20.3. The context menu has three options: Goto....., Find....., and Sort.....

1	47.6	20.6
3	47.7	
5	47.7	
7	47.8	
9	47.9	20.4
11	47.9	20.3



A screenshot of the 'Goto Table Cell' dialog box. It has a 'Destination' label, a 'Row' field with a spinner set to 1, and a 'Column' field with a spinner set to 5. There are 'OK' and 'Cancel' buttons at the bottom.

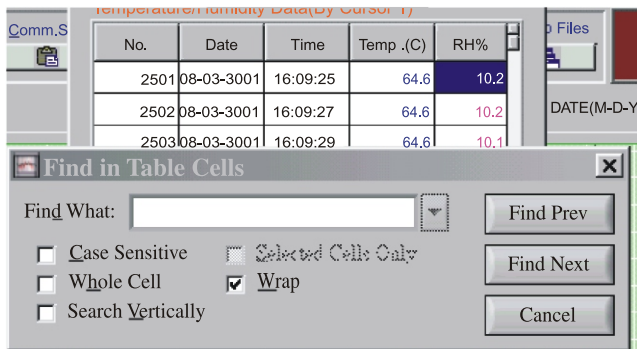
2506	08-03-3001	16:09:35	64.6	10.
2507				10.
2508				10.
2509				10.
2510				10.
2511				10.
2512				10.
2513				10.
2514				10.
2515				10.



Select the column range by clicking on title (Number ,Date , Time , Temp. Humidity (RH%) , the whole column will be selected and dark block , above pop menu will be came out , there are 4 Orientation for selection :

1. Sort by Ascending Row Values.
2. Sort by Descending Row Values.
3. Sort by Ascending Column Values.
4. Sort by Descending Column Values.

Move the mouse to click one of them , and key column will show the number of column , for example , you have selected "Temp.;" as sort by Column values, the key column will display "4" , then press "OK" , the data will be sorted as requested .



From Find menu dialogue , you may enter the value or number or letters you try to find in the "Find What " block. Select from the following :

1. Case Sensitive
2. While Cell
3. Search Vertically
4. Select Cell Only
5. Wrap

Click any of above , and press "**Find Next** " button to find , press again to find the next , press "**Find Prev.**" To find the previous found point , or exit by pressing "**Cancel**" key .

Copying and Pasting

You can copy one or more cells to the cilpboard by clicking left button , then press and hold <Shift> button to select the area . You can then paste the contents of the system clipboard into a table control by pressing <Ctrl-V> after selecting the cell(s) into which you want to paste the data.

STATISTICS

Depress icon to view histograms of data based on "**Whole Range**" and on different "**Cursor Range**" basis. See (Diagram I)

Whole Range - Covers all sample readings which have been logged.

Cursor Range - Covers all sample readings between two cursors.

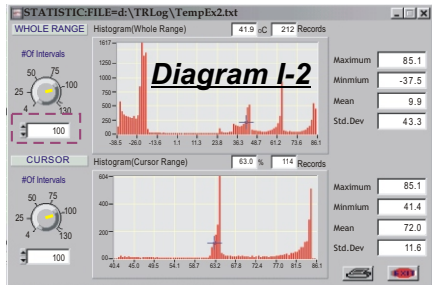
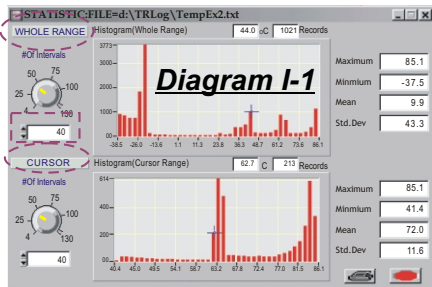
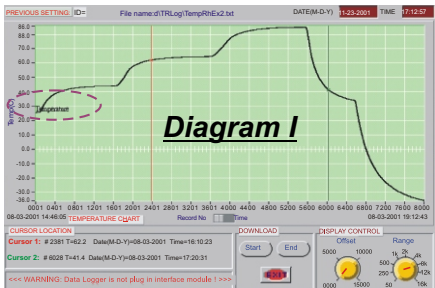
1. Click and drag the yellow indicator on the button display in the left part of **Diagram I** enables equally divide all sample readings into 4 divisions (up to 130). This can also be done by clicking on ▲/▼ or by keying in the figure directly.

Note: You might not be able to see this diagram, this is an example to show you the graph that select whole range to 40 and cursor range to 40 .

2. As shown in the middle top of **Diagram I-1**, by changing the cursor position, you will find an example for the statistic screen of temperature records .

1021 samples located at the temperature of 44°C(or 213 samples at the temperature of 62.7°C between two cursors' range as shown in the middle bottom).

3. If you set all sample readings into 100 divisions, you will find the histogram of whole range changed as well.
4. **Diagram I-2** is another example of setting the cursor range; it has been set into 100 division as well.
5. If you compare **Diagram I, I-1, I-2**, you will notice the differences of changing setting have also changed the related figures.
6. For the model OM8829 (Temperature & Humidity datalogger) , you will see **Diagram J-1** as an example, the upper diagram shows the cursor 1 temperature , the lower diagram shows the Relative Humidity records. **Diagram J-2** set division as 130.



7. Diagram I is an Temperature example for the statistic source to the Diagram I-1 and Diagram I-2 .

And Diagram J is another Temperature/Humidity example for the statistic source to the Diagram J-1 and Diagram J-2.

8. The right part of Diagram I indicates **Maximum, Minimum, Mean and Standard Deviation (Std.Dev)** values from the temperature of whole range (Upper part) and between 2 cursors' range (Lower part).

Maximum	85.1
Minmium	41.4
Mean	72.0
Std.Dev	11.6

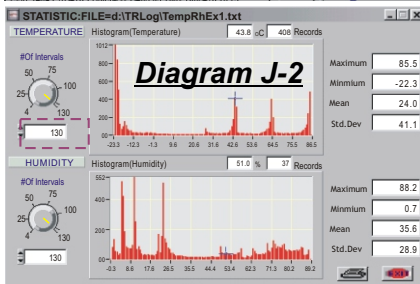
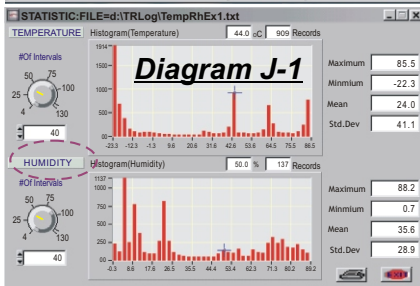
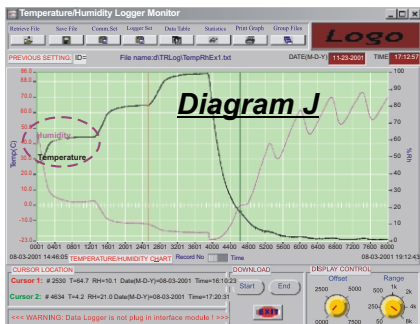
Maximum :

The greatest value of whole logged records, or the greatest value between two selected cursors , or the greatest value of whole Humidity records.

Minimum : The least value from the logged records , or the least value between two selected cursors, or the least value whole logged Humidity records.
(Model: OM8829)

Mean : Average value from the logged records , or average value between two selected cursors , or average value from whole logged Humidity records.
(Model: OM8829).

Std. Dev. : This is a very useful feature to see more reliable deviation while recording . Calculate each deviation between each value and Mean value, then get an average figure from totalism deviation.
(See **Diagram I-1**)

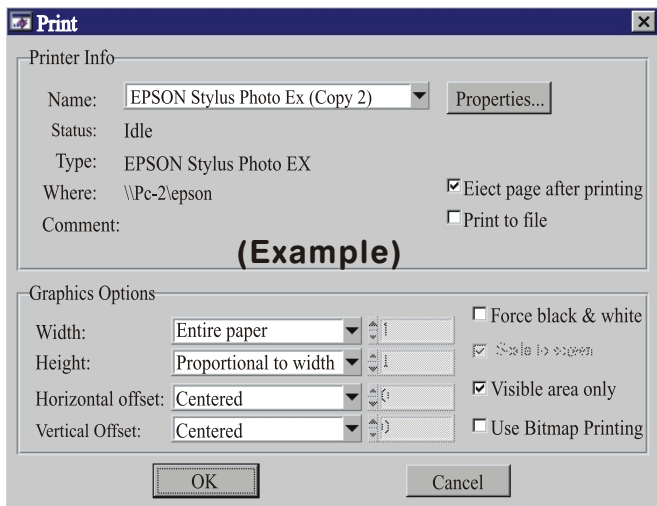


PRINT GRAPH

Depress icon to print the graph out to either a printer or a fax/internet program depending on your available facilities. See **diagram L**.

Selecting "**Print**" button on the menu bar, Windows "**Print**" dialog box allows you to change the pre-set format ,then print the contents of the currently active window .

Diagram L



Print

Printer Info

Name: EPSON Stylus Photo Ex (Copy 2) Properties...

Status: Idle

Type: EPSON Stylus Photo EX

Where: \\Pc-2\epson Eject page after printing

Comment: Print to file

(Example)

Graphics Options

Width: Entire paper Force black & white

Height: Proportional to width Scale to paper

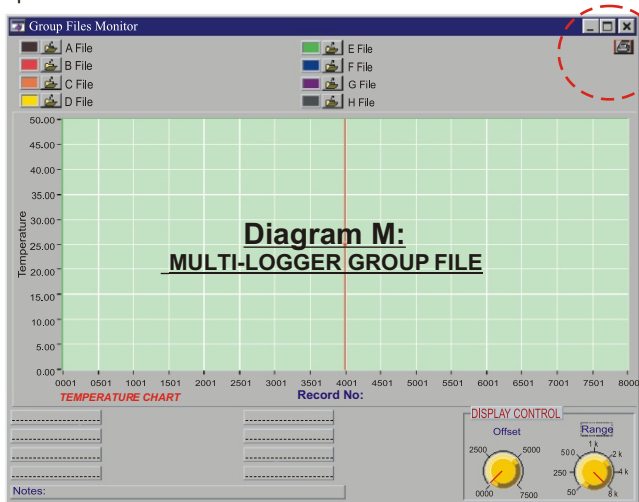
Horizontal offset: Centered Visible area only

Vertical Offset: Centered Use Bitmap Printing

OK Cancel


GROUP FILES

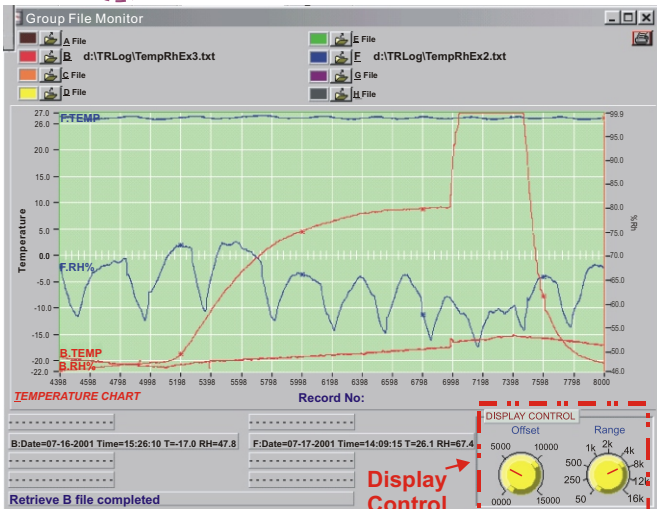
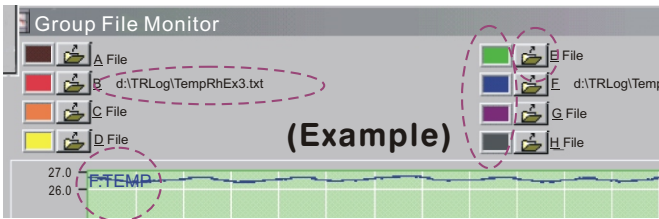
Click on its icon to view "**Multi-Logger Monitor**", which is designed to view and to compare different data files. **Diagram M** is the screen before you clicking the icon. You may select and change the color of curve to refer to the file you retrieve by clicking the color block. You can print the screen datas by clicking the printer icon at the right top corner.



FAQ: *If I want to retrieve another file to replace current file shown on the graph , how should I ?*

Ans: Select the file you don't want, then click the color icon and choose the transparent, the old file's graph is disappear , then select the desired file you want to retrieve .

Click  to select the file you want to compare or view with other files, click color icon box to select the color you want, After file retrieved completed, the start point of the file curve indicate with a Capital initial (A, B, C, D, E, F, G, H) and Temperature or Humidity, the file name follow the capital shown on below screen.



To compare with different data files :

Diagram M displays main screen before retrieving any file.

Diagram N is what you see after loading the example files:

Indicates different data files loaded and shown in different colors of histogram.

You can always change the offset and range setting desired by moving the indicator on the yellow button. Please see Diagram O , refer to the introduction **DISPLAY CONTROL** , read throughly for more detail description & examples .

TEMPERATURE CHART

The Temperature Chart displays the diagram after all sample readings are completely downloaded. (Please refer to **Diagram A, B**)

CURSOR STATUS

The Cursor Status indicates exact figures of **Cursor 1** and **Cursor 2**. (See DiagramQ)

PREVIOUS SETTING:

Previous setting records are listed in this column for reference. (Please refer to **Diagram P.**)

Diagram P

Temperature Logger Monitor

Retrieve File Save File Comm.Set Logger Set Data Table Statistics Print Graph

PREVIOUS SETTING: ID= File name: c:\Templog\RoomByF1125.txt

79.0

78.8

(Example)

FAQ: If I want to download next logger , how to update the last one graph without turning off or exiting current screen ?

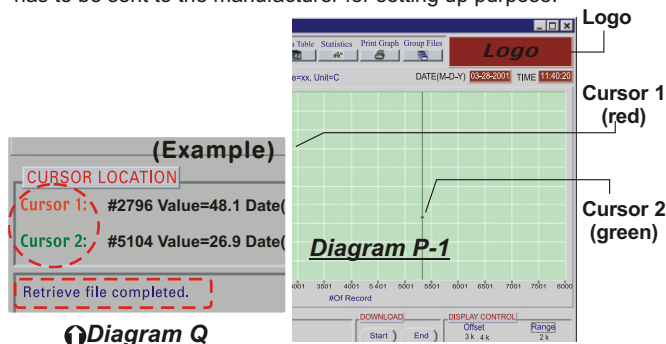
Ans.: You may have two choices to down load the next logger :

- a) Click "**PREVIOUS SETTING**"to replace the last logger data with a new one.
- b) Close the program and reopen again.

Note : Click "**Retrieve File**" will not activate with a new logger data unless you follow above instruction.

BLANK LOGO

This area is designed to insert customers' own logo. The logo will be set as default image and can't be changed by the users. (Please refer to **Diagram P-1**) If private logo is needed , a clear logo artwork has to be sent to the manufacturer for setting up purpose.



MESSAGE

It is blank if there is no file retrieved (See **Diagram A**). After retrieving file, the message will be changed to "**Retrieve file completed.**" (See **Diagram Q**)

DOWNLOAD COMMANDS

Start - To start downloading data to the program.(See below diagram)

Stop - To manually stop downloading data to the program; which means if you don't want to download complete sample readings, you can always stop it at any time you want.

Exit - To exit Download Commands.



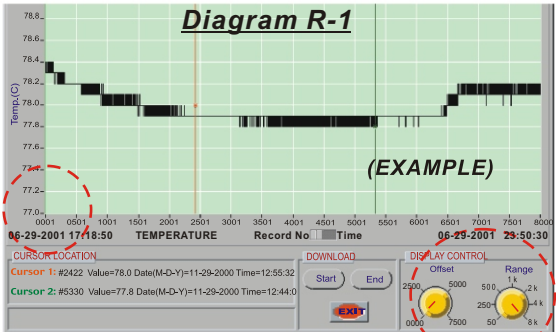
DISPLAY CONTROL

Offset - To set up from which sample Reading you would like to start.
There are 0000 , 2500 , 5000 , 7500 ranges for selection.



Diagram R

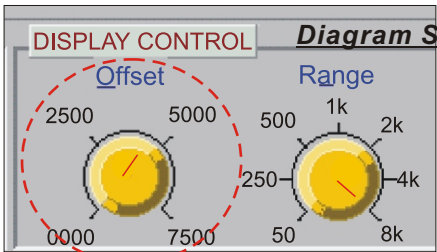
For example : Set Offset by clicking and dragging the **red indicator** to "**0000**", **Range** unchanged at "**8K**", you will see the **Diagram R-1** The screen shows the number **0001** as starting point of the total 8,000 records.

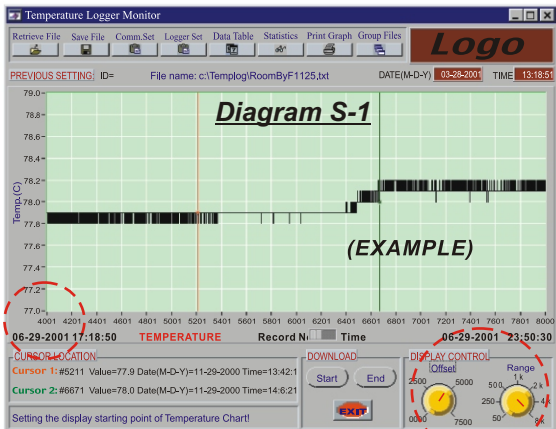


Another example :

Set Offset by clicking and dragging the **red indicator** to "**4000**", **Range** unchanged at "**8K**", you will see the **Diagram S** below. The screen shows the number **4000** as starting point of the total 8,000 records.(See diagram S-1)

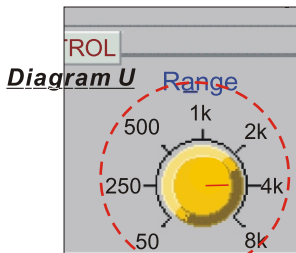
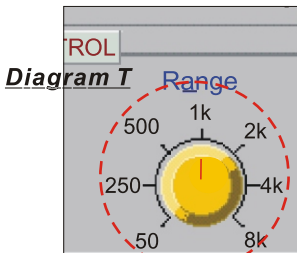
Actually there are **4,000** records per the offset you selected but not a total 8,000 records (**Range** set on **8K**).





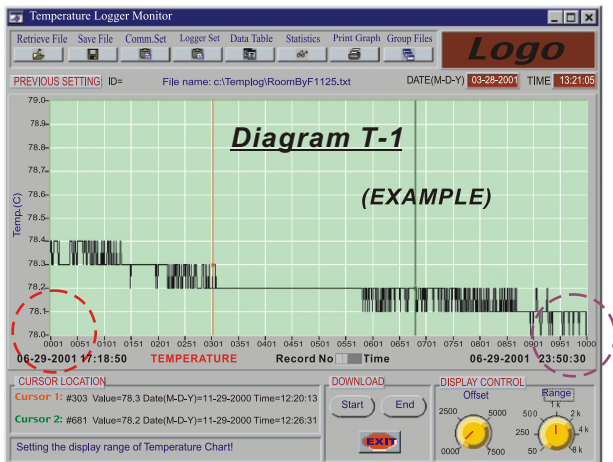
Display Control (For X-Axis records)

Range - To set up the range of sample Reading you would like to cover in the chart. There are **50,250,500,1K,2K,4K,8K** for selection.



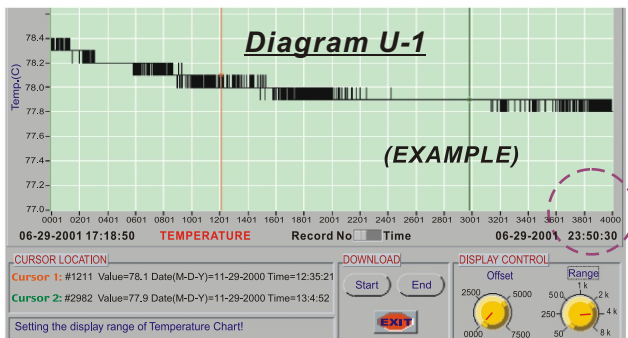
For example:

Set Range by clicking & dragging the red indicator as **Diagram T** to "1K", **Diagram T-1** is shown the data record from **0001** to **1000**.



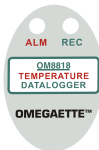
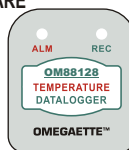
Another example :

Set Range to "4K" as Diagram U, then Diagram U-1 is shown the data record from 0001 to 4001.

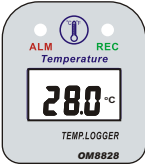
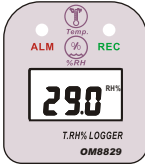


GENERAL SPECIFICATION

TEMPERATURE DATALOGGER

SPECIFICATIONS	OM8800D	OM88128
TEMP. RANGE	-40~85°C	
	-40~185°F	
SHAPE	OVAL 	SQUARE 
POWER BAT.	ER3 or CR2 lithium battery x1	
ACCURACY	Temp. ± 0.6°C (-20~50°C) ±1.2°C (-40~20°C, 51~85°C)	
SAMPLE DATA	Up to 8000	up to 16000
SAMPLE POINTS	1K/2K/4K/8K	1K/2K/4K/8K/12K/16K
HOUSING	WATERPROOF	
DIMENSIONS(mm)	124(L)x92(W)x37(T)(Interface)	
	108(L)x66(W)x22(T)	80(L)x55(W)x22(T)
	124(L)x92(W)(Complete set)	
LED SIGNAL	Red (HI,LO Alarm) /Yellow(Record)	
RESOLUTION	0.1°C (0.1°F) for range -40°C~50°C 0.2°C for range 50~70°C 0.3°C for range 70~85°C	0.1°C (0.1°F)
CABLE LENGTH	150 cm with DB9 connector	

TEMPERATURE / RELATIVE HUMIDITY DATALOGGER WITH LCD DISPLAY

SPECIFICATIONS	OM8828	OM8829
TEMP. RANGE	-40~85°C	
	-40~185°F	
HUMIDITY RANGE	N/A	0~100% RH
FRONT PANEL		
POWER BAT.	ER3 or CR2 lithium battery x1	
ACCURACY	Temp. $\pm 0.6^{\circ}\text{C}$ (-20~50°C) $\pm 1.2^{\circ}\text{C}$ (-40~20°C, 51~85°C) Humidity: $\pm 3\%$ RH	
BAT LOW DISPLAY	"Lo" DISPLAY	
SAMPLE DATA	Up to 16000	
SAMPLE POINTS	1K/2K/4K/8K/12K/16K	
LCD DISPLAY	SIZE: 12 x 25.5 mm	
HOUSING	WATERPROOF	WATER RESISTANT
DIMENSIONS(mm)	124(L)x92(W)x37(T)(Interface)	
	80(L)x55(W)x22(T)	
	124(L)x92(W)(Complete set)	
LED SIGNAL	Red (HI, LO Alarm) / Yellow (Record)	
RESOLUTION	0.1°C (0.1°F)	
CABLE LENGTH	150 cm with DB9 connector	

F.A.Q.(Frequently Ask Question)

FAQ: *If I can't download and the display won't active, what should I do ?*

Ans: Make sure you have selected correct baud rate , see page select 4800 baud rate for model OM8800D , or select 9600 baud rate for the rest models. This is to ensure you could download quicker by selecting correct baud rate value .

FAQ: *If the logger is not flashing , how should I do ?*

Ans: If you were set up Magnet start function , when a magnet passes over the middle of rear side , the logger is not flashing , change with a new and stronger magnetism and try it again. Make sure the flashing interval is the same as programmed sampling time . If you were set 5 minutes as sample rate , the LED will just flash every 5 minutes .

WARRANTY/DISCLAIMER

OMEGA ENGINEERING, INC. warrants this unit to be free of defects in materials and workmanship for a period of **13 months** from date of purchase. OMEGA's Warranty adds an additional one (1) month grace period to the normal **one (1) year product warranty** to cover handling and shipping time. This ensures that OMEGA's customers receive maximum coverage on each product.

If the unit malfunctions, it must be returned to the factory for evaluation. OMEGA's Customer Service Department will issue an Authorized Return (AR) number immediately upon phone or written request. Upon examination by OMEGA, if the unit is found to be defective, it will be repaired or replaced at no charge. OMEGA's WARRANTY does not apply to defects resulting from any action of the purchaser, including but not limited to mishandling, improper interfacing, operation outside of design limits, improper repair, or unauthorized modification. This WARRANTY is VOID if the unit shows evidence of having been tampered with or shows evidence of having been damaged as a result of excessive corrosion; or current, heat, moisture or vibration; improper specification; misapplication; misuse or other operating conditions outside of OMEGA's control. Components which wear are not warranted, including but not limited to contact points, fuses, and triacs.

OMEGA is pleased to offer suggestions on the use of its various products. However, OMEGA neither assumes responsibility for any omissions or errors nor assumes liability for any damages that result from the use of its products in accordance with information provided by OMEGA, either verbal or written. OMEGA warrants only that the parts manufactured by it will be as specified and free of defects. OMEGA MAKES NO OTHER WARRANTIES OR REPRESENTATIONS OF ANY KIND WHATSOEVER, EXPRESS OR IMPLIED, EXCEPT THAT OF TITLE, AND ALL IMPLIED WARRANTIES INCLUDING ANY WARRANTY OF MERCHANTABILITY AND FITNESS FOR A PARTICULAR PURPOSE ARE HEREBY DISCLAIMED. LIMITATION OF LIABILITY: The remedies of purchaser set forth herein are exclusive, and the total liability of OMEGA with respect to this order, whether based on contract, warranty, negligence, indemnification, strict liability or otherwise, shall not exceed the purchase price of the component upon which liability is based. In no event shall OMEGA be liable for consequential, incidental or special damages.

CONDITIONS: Equipment sold by OMEGA is not intended to be used, nor shall it be used: (1) as a "Basic Component" under 10 CFR 21 (NRC), used in or with any nuclear installation or activity; or (2) in medical applications or used on humans. Should any Product(s) be used in or with any nuclear installation or activity, medical application, used on humans, or misused in any way, OMEGA assumes no responsibility as set forth in our basic WARRANTY/DISCLAIMER language, and, additionally, purchaser will indemnify OMEGA and hold OMEGA harmless from any liability or damage whatsoever arising out of the use of the Product(s) in such a manner.

RETURN REQUESTS/INQUIRIES

Direct all warranty and repair requests/inquiries to the OMEGA Customer Service Department. BEFORE RETURNING ANY PRODUCT(S) TO OMEGA, PURCHASER MUST OBTAIN AN AUTHORIZED RETURN (AR) NUMBER FROM OMEGA'S CUSTOMER SERVICE DEPARTMENT (IN ORDER TO AVOID PROCESSING DELAYS). The assigned AR number should then be marked on the outside of the return package and on any correspondence. The purchaser is responsible for shipping charges, freight, insurance and proper packaging to prevent breakage in transit.

FOR **WARRANTY** RETURNS, please have the following information available BEFORE contacting OMEGA:

1. Purchase Order number under which the product was PURCHASED,
2. Model and serial number of the product under warranty, and
3. Repair instructions and/or specific problems relative to the product.

FOR **NON-WARRANTY** REPAIRS, consult OMEGA for current repair charges. Have the following information available BEFORE contacting OMEGA:

1. Purchase Order number to cover the COST of the repair,
2. Model and serial number of the product, and
3. Repair instructions and/or specific problems relative to the product.

OMEGA's policy is to make running changes, not model changes, whenever an improvement is possible. This affords our customers the latest in technology and engineering.

OMEGA is a registered trademark of OMEGA ENGINEERING, INC.

© Copyright 2001 OMEGA ENGINEERING, INC. All rights reserved. This document may not be copied, photocopied, reproduced, translated, or reduced to any electronic medium or machine-readable form, in whole or in part, without the prior written consent of OMEGA ENGINEERING, INC.

Where Do I Find Everything I Need for Process Measurement and Control? **OMEGA...Of Course!**

Shop online at www.omega.com

TEMPERATURE

- ☑ Thermocouple, RTD & Thermistor Probes, Connectors, Panels & Assemblies
- ☑ Wire: Thermocouple, RTD & Thermistor
- ☑ Calibrators & Ice Point References
- ☑ Recorders, Controllers & Process Monitors
- ☑ Infrared Pyrometers

PRESSURE, STRAIN AND FORCE

- ☑ Transducers & Strain Gages
- ☑ Load Cells & Pressure Gages
- ☑ Displacement Transducers
- ☑ Instrumentation & Accessories

FLOW/LEVEL

- ☑ Rotameters, Gas Mass Flowmeters & Flow Computers
- ☑ Air Velocity Indicators
- ☑ Turbine/Paddlewheel Systems
- ☑ Totalizers & Batch Controllers

pH/CONDUCTIVITY

- ☑ pH Electrodes, Testers & Accessories
- ☑ Benchtop/Laboratory Meters
- ☑ Controllers, Calibrators, Simulators & Pumps
- ☑ Industrial pH & Conductivity Equipment

DATA ACQUISITION

- ☑ Data Acquisition & Engineering Software
- ☑ Communications-Based Acquisition Systems
- ☑ Plug-in Cards for Apple, IBM & Compatibles
- ☑ Datalogging Systems
- ☑ Recorders, Printers & Plotters

HEATERS

- ☑ Heating Cable
- ☑ Cartridge & Strip Heaters
- ☑ Immersion & Band Heaters
- ☑ Flexible Heaters
- ☑ Laboratory Heaters

ENVIRONMENTAL MONITORING AND CONTROL

- ☑ Metering & Control Instrumentation
- ☑ Refractometers
- ☑ Pumps & Tubing
- ☑ Air, Soil & Water Monitors
- ☑ Industrial Water & Wastewater Treatment
- ☑ pH, Conductivity & Dissolved Oxygen Instruments