

Quick Start Guide

Welcome to use home security product. You can remote view live video and record of your home (shops, offices, etc.) anywhere anytime using your smart phones. Please read this manual carefully before using the product.

1. Packing List

Name	Quantity	Instruction
Home security IP Camera	1 PC	You can get the live video from smart phone or computer after connecting the camera to your Wi-Fi router.
Power Adapter	1 PC	The length of Power cable is 1.5 meter.
Quick Start Guide	1 PC	Help install and operate the product.
Network Cable	1 PC	The length is 1 meter. Connect the camera to the router. Some models of product don't have the network cable.
Wall Bracket	1 PC	Used for stalling the camera on the wall.
Expansion Screw	Some	Used for fixing the camera on the wall.

2. Operational Environment Required

1. 1 piece of Wi-Fi router connected to internet is needed.
2. Browser with IE core, Safari browser, Chrome browser, Firefox browser, Opera Browser etc.
3. Smart terminal: Android system (Android 4.0 or above, with CPU 1GHz or above); iOS system (5.0 or above)

3. Installation and Configuration

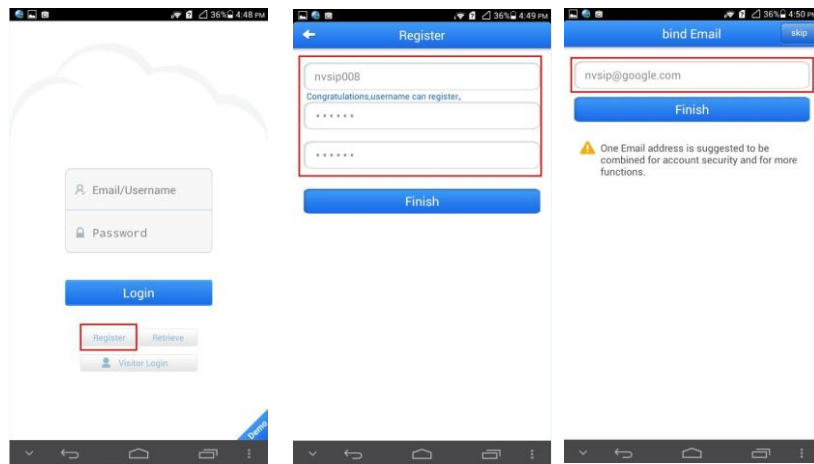
Step 1: Power on the camera.

Step 2: Download and install APP on your smart phone. There are 2 methods as follows.

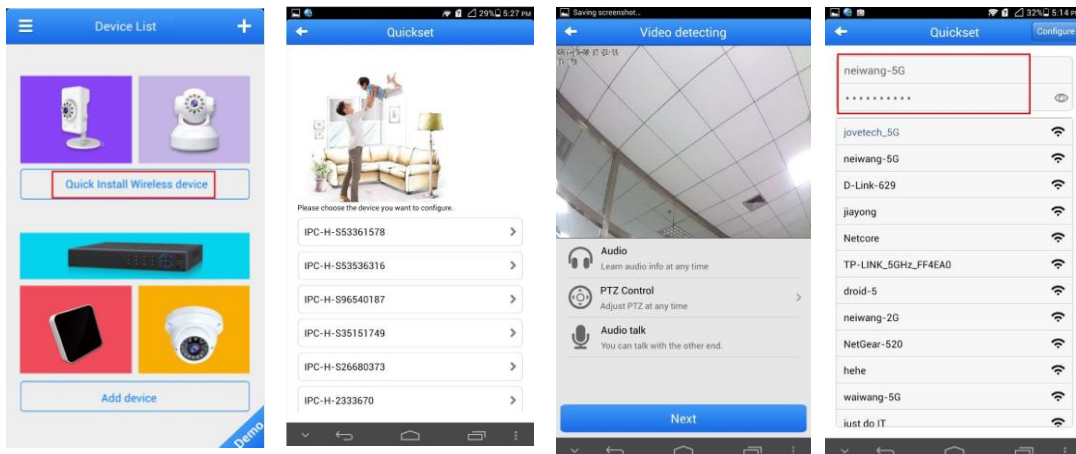
1. Download Nvisp APP from Google Play or App Store using keyword: Nvisip
2. Scan the QR code to download the APP (Both Android phone and iPhone can scan the following QR code).

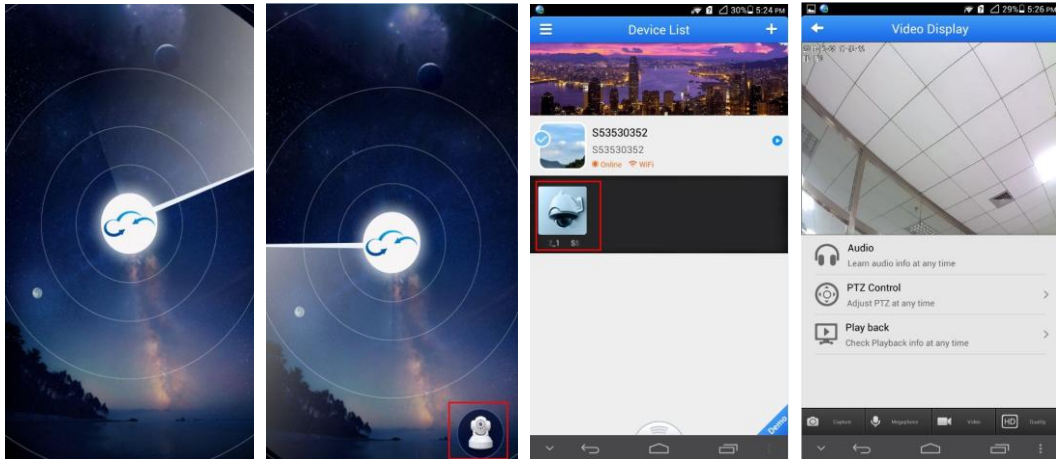


Step 3: Register and bind the E-mail ID.



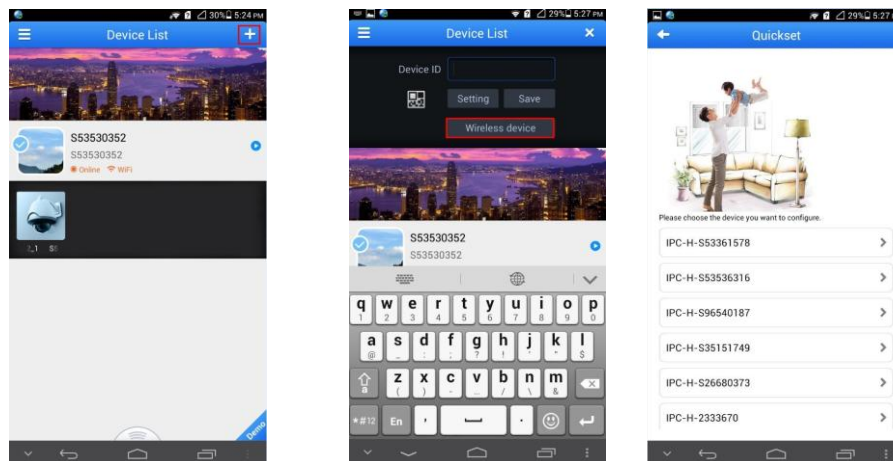
Step 4: Click [Quick Install Wireless Device] and operate following the voice prompts.





Note:

1. You can also add the wireless device at the interface manually, and then follow the above steps.



2. If the device needs to reconfigure wireless under wireless connection, please press [RESET] button for at least 5 seconds (If the device supports audio, it will be OK after hearing voice prompt). After reset, follow the above steps to reconfigure wireless.

4. FCC Caution.

§ 15.19 Labelling requirements.

This device complies with part 15 of the FCC Rules. Operation is subject to the following two conditions: (1) This device may not cause harmful interference, and (2) this device must accept any interference received, including interference that may cause undesired operation.

§ 15.21 Information to user.

Any Changes or modifications not expressly approved by the party responsible for compliance could void the user's authority to operate the equipment.

§ 15.105 Information to the user.

Note: This equipment has been tested and found to comply with the limits for a Class B digital device, pursuant to part 15 of the FCC Rules. These limits are designed to provide reasonable protection against harmful interference in a residential installation. This equipment generates uses and can radiate radio frequency energy and, if not installed and used in accordance with the instructions, may cause harmful interference to radio communications. However, there is no guarantee that interference will not occur in a particular installation. If this equipment does cause harmful interference to radio or television reception, which can be determined by turning the equipment off and on, the user is encouraged to try to correct the interference by one or more of the following measures:

- Reorient or relocate the receiving antenna.
- Increase the separation between the equipment and receiver.
- Connect the equipment into an outlet on a circuit different from that to which the receiver is connected.
- Consult the dealer or an experienced radio/TV technician for help.

*RF warning for Mobile device:

This equipment complies with FCC radiation exposure limits set forth for an uncontrolled environment. This equipment should be installed and operated with minimum distance 20cm between the radiator & your body.

<The End>