

ONKYO®

Universal Port Module for AirPlay®

UP-AR1

Instruction Manual
Manuel d'instructions
Manual de Instrucciones
Manuale di istruzioni
Bedienungsanleitung
Gebruiksaanwijzing
Bruksanvisning
使用手冊
使用手冊
Инструкция по эксплуатации
取扱説明書
دليل التعليمات



Made for



iPod



iPhone



iPad

En Fr Es It De Nl Sv Ct Cs Ru Ja Ar

English

Français

Espanöl

Italiano

Deutsch

Nederlands

Svenska

繁體中文

简体中文

Русский

日本語

عربي

Thank you for purchasing an Onkyo product. Please read this manual carefully before making any connections or using this product. By following these instructions, you'll get the best audio performance and the most listening pleasure from your Onkyo product. Keep this manual for future reference.

WARNING:

TO REDUCE THE RISK OF FIRE OR ELECTRIC SHOCK, DO NOT EXPOSE THIS APPARATUS TO RAIN OR MOISTURE.

CAUTION:

TO REDUCE THE RISK OF ELECTRIC SHOCK, DO NOT REMOVE COVER (OR BACK). NO USER-SERVICEABLE PARTS INSIDE. REFER SERVICING TO QUALIFIED SERVICE PERSONNEL.



WARNING
RISK OF ELECTRIC SHOCK
DO NOT OPEN

AVIS
RISQUE DE CHOC ELECTRIQUE
NE PAS OUVRIR



The lightning flash with arrowhead symbol, within an equilateral triangle, is intended to alert the user to the presence of uninsulated "dangerous voltage" within the product's enclosure that may be of sufficient magnitude to constitute a risk of electric shock to persons.



The exclamation point within an equilateral triangle is intended to alert the user to the presence of important operating and maintenance (servicing) instructions in the literature accompanying the appliance.

Important Safety Instructions

1. Read these instructions.
2. Keep these instructions.
3. Heed all warnings.
4. Follow all instructions.
5. Do not use this apparatus near water.
6. Clean only with dry cloth.
7. Do not install near any heat sources such as radiators, heat registers, stoves, or other apparatus that produce heat.
8. Protect the connection cord from being walked on.
9. Unplug this apparatus during lightning storms or when unused for long periods of time.
10. Refer all servicing to qualified service personnel. Servicing is required when the apparatus has been damaged in any way, such as connection cord is damaged, liquid has been spilled or objects have fallen into the apparatus, the apparatus has been exposed to rain or moisture, does not operate normally, or has been dropped.

11. Damage Requiring Service

Unplug the apparatus from the AV receiver/amplifier and refer servicing to qualified service personnel under the following conditions:

- A. When the connection cord is damaged,
- B. If liquid has been spilled, or objects have fallen into the apparatus,
- C. If the apparatus has been exposed to rain or water,
- D. If the apparatus does not operate normally by following the operating instructions. Adjust only those controls that are covered by the operating instructions as an improper adjustment of other controls may result in damage and will often require extensive work by a qualified technician to restore the apparatus to its normal operation,
- E. If the apparatus has been dropped or damaged in any way, and
- F. When the apparatus exhibits a distinct change in performance this indicates a need for service.

Precautions

1. **Care**—Occasionally you should dust the unit all over with a soft cloth. For stubborn stains, use a soft cloth dampened with a weak solution of mild detergent and water. Dry the unit immediately afterwards with a clean cloth. Don't use abrasive cloths, thinners, alcohol, or other chemical solvents, because they may damage the finish or remove the panel lettering.
2. **Never Touch this Unit with Wet Hands**—Never handle this unit or its connection cord while your hands are wet or damp. If water or any other liquid gets inside this unit, have it checked by your Onkyo dealer.

For U.S. models

FCC Statement

Federal Communication Commission Interference Statement

This equipment has been tested and found to comply with the limits for a Class B digital device, pursuant to Part 15 of the FCC Rules. These limits are designed to provide reasonable protection against harmful interference in a residential installation. This equipment generates, uses and can radiate radio frequency energy and, if not installed and used in accordance with the instructions, may cause harmful interference to radio communications. However, there is no guarantee that interference will not occur in a particular installation. If this equipment does cause harmful interference to radio or television reception, which can be determined by turning the equipment off and on, the user is encouraged to try to correct the interference by one or more of the following measures:

- Reorient or relocate the receiving antenna.
- Increase the separation between the equipment and receiver.
- Connect the equipment into an outlet on a circuit different from that to which the receiver is connected.
- Consult the dealer or an experienced radio/TV technician for help.

FCC Caution:

FCC WARNING

Changes or modifications not expressly approved by the party responsible for compliance could void the user's authority to operate the equipment. This device complies with Part 15 of FCC Rules. Operation is subject to the following two conditions: (1) this device may not cause interference, and (2) this device must accept any interference, including interference that may cause undesired operation of this device.

Le présent appareil est conforme aux la partie 15 des règles de la FCC et CNR d'Industrie Canada applicables aux appareils radio exempts de licence. L'exploitation est autorisée aux deux conditions suivantes : (1) l'appareil ne doit pas produire de brouillage, et (2) l'utilisateur de l'appareil doit accepter tout brouillage radioélectrique subi, même si le brouillage est susceptible d'en compromettre le fonctionnement.

For product available in the USA/Canada market, only channel 1~11 can be operated. Selection of other channels is not possible. This device and its antenna(s) must not be co-located or operation in conjunction with any other antenna or transmitter.

IMPORTANT NOTE:

FCC Radiation Exposure Statement:

This equipment complies with FCC radiation exposure limits set forth for an uncontrolled environment and meets the FCC radio frequency (RF) Exposure Guidelines in Supplement C to OET65. This equipment should be installed and operated keeping the radiator at least 20 cm or more away from person's body (excluding extremities: hands, wrists, feet and ankles).

IC Statement

This device complies with Industry Canada licence-exempt RSS standard(s). Operation is subject to the following two conditions: (1) this device may not cause interference, and (2) this device must accept any interference, including interference that may cause undesired operation of the device.

Le présent appareil est conforme aux CNR d'Industrie Canada applicables aux appareils radio exempts de licence.

L'exploitation est autorisée aux deux conditions suivantes :

(1) l'appareil ne doit pas produire de brouillage, et (2) l'utilisateur de l'appareil doit accepter tout brouillage radioélectrique subi, même si le brouillage est susceptible d'en compromettre le fonctionnement.

For product available in the USA/Canada market, only channel 1~11 can be operated. Selection of other channels is not possible. This device and its antenna(s) must not be co-located or operation in conjunction with any other antenna or transmitter.

IMPORTANT NOTE:

IC Radiation Exposure Statement:

This equipment complies with IC radiation exposure limits set forth for an uncontrolled environment and meets RSS-102 of the IC radio frequency (RF) Exposure rules. This equipment should be installed and operated keeping the radiator at least 20cm or more away from person's body (excluding extremities: hands, wrists, feet and ankles).

Cet équipement est conforme aux limites d'exposition aux rayonnements énoncées pour un environnement non contrôlé et respecte les règles d'exposition aux fréquences radioélectriques (RF) CNR-102 de l'IC. Cet équipement doit être installé et utilisé en gardant une distance de 20 cm ou plus entre le dispositif rayonnant et le corps (à l'exception des extrémités : mains, poignets, pieds et chevilles).

For European models



En-6

Hereby, ONKYO SOUND & VISION CORPORATION, declares that this UP-AR1 is in compliance with the essential requirements and other relevant provisions of Directive 1999/5/EC.

С настоящето, ONKYO SOUND & VISION CORPORATION, декларира, че UP-AR1 е в съответствие със съществените изисквания и другите приложими разпоредби на Директива 1999/5/EC.

ONKYO SOUND & VISION CORPORATION tímto prohlašuje, že UP-AR1 splňuje základní požadavky a všechna příslušná ustanovení Směrnice 1999/5/ES.

Undertegnede ONKYO SOUND & VISION CORPORATION erklærer herved, at følgende udstyr UP-AR1 overholder de væsentlige krav og øvrige relevante krav i direktiv 1999/5/EF.

Hiermit erklärt ONKYO SOUND & VISION CORPORATION, dass sich das Gerät UP-AR1 in Übereinstimmung mit den grundlegenden Anforderungen und den übrigen einschlägigen Bestimmungen der Richtlinie 1999/5/EG befindet.

Käesolevaga kinnitab ONKYO SOUND & VISION CORPORATION seadme UP-AR1 vastavust direktiivi 1999/5/EÜ põhinõuetele ja nimetatud direktiivist tulenevatele teistele asjakohastele sätetele.

ΜΕ ΤΗΝ ΠΑΡΟΥΣΑ Ο ΚΑΤΑΣΚΕΥΑΣΤΗΣ ONKYO SOUND & VISION CORPORATION ΔΗΛΩΝΕΙ ΟΤΙ UP-AR1 ΣΥΜΜΟΡΦΩΝΕΤΑΙ ΠΡΟΣ ΤΙΣ ΟΥΣΙΩΔΕΙΣ ΑΠΑΙΤΗΣΕΙΣ ΚΑΙ ΤΙΣ ΛΟΙΠΕΣ ΣΧΕΤΙΚΕΣ ΔΙΑΤΑΞΕΙΣ ΤΗΣ ΟΔΗΓΙΑΣ 1999/5/ΕΚ

Por la presente, ONKYO SOUND & VISION CORPORATION, declara que este UP-AR1 cumple con los requisitos esenciales y otras exigencias relevantes de la Directiva 1999/5/EC.

Par la présente, ONKYO SOUND & VISION CORPORATION déclare que l'appareil UP-AR1 est conforme aux exigences essentielles et aux autres dispositions pertinentes de la directive 1999/5/CE.

Con la presente ONKYO SOUND & VISION CORPORATION dichiara che questo UP-AR1 è conforme ai requisiti essenziali ed alle altre disposizioni pertinenti stabilite dalla direttiva 1999/5/CE.

Ar šo ONKYO SOUND & VISION CORPORATION deklarē, ka UP-AR1 atbilst Direktīvas 1999/5/EK būtiskajām prasībām un citiem ar to saistītajiem noteikumiem.

Šiuo ONKYO SOUND & VISION CORPORATION deklaruoja, kad šis UP-AR1 atitinka esminius reikalavimus ir kitas 1999/5/EB Direktyvos nuostatas.

A ONKYO SOUND & VISION CORPORATION ezzenel kijelenti, hogy a UP-AR1 típusú berendezés teljesíti az alapvető követelményeket és más 1999/5/EK irányelvben meghatározott vonatkozó rendelkezéseket.

Hierbij verklaart ONKYO SOUND & VISION CORPORATION dat het toestel I UP-AR1 in overeenstemming is met de essentiële eisen en de andere relevante bepalingen van richtlijn 1999/5/EG.

Niniejszym ONKYO SOUND & VISION CORPORATION deklaruje że UP-AR1 jest zgodny z zasadniczymi wymaganiami i innymi właściwymi postanowieniami Dyrektywy 1999/5/EC.

Eu, ONKYO SOUND & VISION CORPORATION, declaro que o UP-AR1 cumpre os requisitos essenciais e outras provisões relevantes da Directiva 1999/5/EC.

Prin prezenta, ONKYO SOUND & VISION CORPORATION, declară că aparatul UP-AR1 este în conformitate cu cerințele esențiale și cu alte prevederi pertinente ale Directivei 1999/5/CE.

ONKYO SOUND & VISION CORPORATION týmto vyhlasuje, že UP-AR1 a spĺňa základné požiadavky a všetky príslušné ustanovenia Smernice 1999/5/ES.

ONKYO SOUND & VISION CORPORATION izjavlja, da je ta UP-AR1 v skladu z bistvenimi zahtevami in drugimi relevantnimi določili direktive 1999/5/ES.

ONKYO SOUND & VISION CORPORATION vakuuttaa täten että UP-AR1 tyyppinen laite on direktiivin 1999/5/EY oleellisten vaatimusten ja sitä koskevien direktiivin muiden ehtojen mukainen.

Härmed förklarar ONKYO SOUND & VISION CORPORATION att denna UP-AR1 följer de väsentliga kraven och andra relevanta stadgar i Direktiv 1999/5/EC.

Hér með lýsir ONKYO SOUND & VISION CORPORATION því yfir að varan UP-AR1 er í samræmi við grunnkröfur og aðrar kröfur sem gerðar eru í tilskipun 1999/5/EC.

ONKYO SOUND & VISION CORPORATION erklærer herved at denne UP-AR1 er i overensstemmelse med væsentlige krav og andre relevante bestemmelser i direktiv 1999/5/EC.

Using the UP-AR1

About UP-AR1

The UP-AR1 connects to Onkyo's network-capable audio components equipped with a universal port* (referred to as **Main device below**), and allows wireless playback of iOS-based devices or iTunes music library using Apple Inc.'s AirPlay.

* Compatible with new-series (TX-NRxx9 and higher) Onkyo AV receivers. (A firmware update is required on some AV receiver models.)

For further details, visit the Onkyo web site. You can find the home page address on the back of this manual.

Note

To use AirPlay, you will need one of the following equipments.

- iPad, iPhone, iPod touch with iOS 4.2 or greater.
- A personal computer with iTunes 10 (or greater) installed.

Tip

For optimal performance, we recommend you always use the latest version of iOS and iTunes. For details on AirPlay or how to obtain the latest version for your software, please visit Apple web site.



AirPlay, the AirPlay logo, iPad, iPhone, iPod, iPod classic, iPod nano, iPod shuffle, and iPod touch are trademarks of Apple Inc., registered in the U.S. and other countries.



The Wi-Fi CERTIFIED Logo is a certification mark of the Wi-Fi Alliance.

Made for



iPod



iPhone



iPad

iPad, iPhone, iPod, iPod classic, iPod nano, iPod shuffle, and iPod touch are trademarks of Apple Inc., registered in the U.S. and other countries.

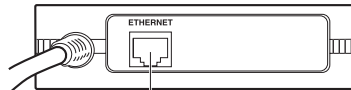
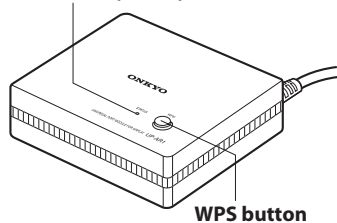
"Made for iPod," "Made for iPhone" and "Made for iPad" mean that an electronic accessory has been designed to connect specifically to iPod, iPhone, or iPad, respectively, and has been certified by the developer to meet Apple performance standards.

Apple is not responsible for the operation of this device or its compliance with safety and regulatory standards.

Please note that the use of this accessory with iPod, iPhone or iPad may affect wireless performance.

Part Names

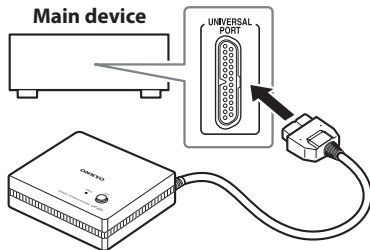
STATUS LED (Green)



ETHERNET port

Connecting the UP-AR1

Connect the UP-AR1 to the Universal Port on your Main device as shown below.



Network Setup

Follow either of the procedures below to perform your network connection.

Note

The wording of displayed items may vary according to the Main device.

Tip

Press **RETURN** to go back one screen.

Wired connection (Ethernet cable)

- 1** Connect the UP-AR1 to your router with an Ethernet cable.
- 2** Set the Main device power to on.

Wireless connection

Note

Make sure that no Ethernet cable is connected. If an Ethernet cable is connected, you must first unplug the cable before continuing with the setting.

■ Performing the setup with the WPS button (your Wi-Fi router must be WPS-capable)

- 1 Set the Main device power to on.**
- 2 Press PORT on the remote controller.**
Wait until **"Starting"** goes off on the Main device's display.
- 3 Press SETUP on the remote controller.**

Note

While **"Starting"** is displayed on the Main device, the **SETUP** button doesn't work.

- 4 Enable the WPS mode on your Wi-Fi router.**
- 5 Press WPS on the UP-AR1.**

■ Performing the setup without the WPS button

- 1 Set the Main device power to on.**
- 2 Press PORT on the remote controller.**
Wait until **"Starting"** goes off on the Main device's display.
- 3 Press SETUP on the remote controller.**
The UP-AR1 enters Setup Mode.

Note

While **"Starting"** is displayed on the Main device, the **SETUP** button doesn't work.

- 4 Use ▲/▼ to select "Wi-Fi SetUp?" and then press ENTER.**
Follow either of the procedure below. Use ▲/▼ to select an option.

WPS PIN code method

- 4.1** Use ▲/▼ to select “**WPS PIN Setup?**” and then press **ENTER**.
SSID are retrieved.
- 4.2** Use ▲/▼ to select from the available SSID and then press **ENTER**.
A PIN code is displayed.
- 4.3** Enter the provided code in your Wi-Fi router.

For information on the above process, please refer to the instruction manual provided with your Wi-Fi router.

SSID search method

- 4.1** Use ▲/▼ to select “**SSID Search?**” and then press **ENTER**.
SSID are retrieved.
- 4.2** Use ▲/▼ to select from the available SSID and then press **ENTER**.
- 4.3** If the Wi-Fi router is secured, enter the security key.
For detail, please refer to “Entering the security key (for AV receivers)” (En-13).
- 4.4** Confirm that “**Wi-Fi Connect?**” is displayed on the Main device and press **ENTER**.

Entering the security key (for AV receivers)

- 1 Use ▲/▼/◀/▶ to select the desired character and then press **ENTER**.

Repeat the above operation to enter the whole security key.

Tip

SHF: Toggles between the character types.

BS: Moves the cursor backward and deletes one character.

SP: Enters a space character.

To correct a character

- 1 Use ▲/▼/◀/▶ to select “←” or “→”, and then press **ENTER**.
- 2 Press **ENTER** several times to highlight the incorrect character. (For each press, the cursor is moved on to the next character.)
- 3 Use ▲/▼/◀/▶ to select the correct character and then press **ENTER**.

- 2 Select “**OK**” and press **ENTER** to confirm your entry.

Playback

Follow the procedure below to play back.

- 1 Select the **PORT** selector.
- 2 Select “**ONKYO UP-AR1 *******” (default name) with the **AirPlay** icon of iTunes or on your iPad/iPhone/iPod touch device.
- 3 Select a song to play back.

Tip

- The volume levels of the Main device and iTunes are linked together. (Depending on the Main device, this may not work.)
- During AirPlay, press **DISPLAY** to switch between song informations.
- When iTunes or your iPad/iPhone/iPod touch device is not detected (no connection via AirPlay), “**No Source**” is displayed on the Main device.
- For detailed information on iTunes, see the Help section of iTunes.

Setup

Follow the procedure below to make the settings of UP-AR1.

1 Press PORT followed by SETUP on the remote controller.

2 Use ▲/▼ to select an option.

■ Wi-Fi SetUp

Make the Wi-Fi settings. For details on the setup, refer to "Performing the setup without the WPS button" (En-11).

Note

These settings can only be made when the Ethernet cable is unplugged.

If the "Wi-Fi SetUp?" option is not displayed, unplug the Ethernet cable and reconnect the UP-AR1 connection cable.

■ Auto Input Select

The Main device's **PORT** selector is automatically selected upon AirPlay playback.

Use ◀/▶ to toggle between "On" or "Off".

■ Wake Up On AirPlay

Even when the Main device is in standby mode, it can be turned on by AirPlay playback.

Use ◀/▶ to toggle between "On" or "Off".

Note

- This function is enabled when the **STATUS LED** on UP-AR1 is lit.
- When this function is set to "On", the standby power consumption of the Main device increases.

■ Web Setup URL

This function displays the URL to make the WEB settings.

You can enter this URL on your personal computer to obtain information on UP-AR1 and perform several settings.

Tip

If you want to restore the default settings, press **ON/STANDBY** while holding down **PORT** on the Main device after "Starting" has gone off from the Main device's display (for AV receivers).

Firmware Update

Follow either of the procedure below to update the firmware of UP-AR1.

Note

Don't unplug the cables or turn the power off during the update process.

Using the WPS button of UP-AR1

1 Press PORT followed by SETUP on the remote controller.

2 Press and hold the WPS button for 10 seconds.

"F/W UpdateMode" is displayed on the Main device, and the firmware update starts.

Wait until "Please Restart" appears.

3 Set the Main device to Standby mode or turn its power off and then turn it back on.

This completes the firmware update. UP-AR1 is now updated with the latest firmware version.

Tip

- During the update process, the **STATUS LED** on UP-AR1 will flash.
- When the latest version is already installed, no firmware update is made.

Using a personal computer

- 1 Download the firmware file from the Onkyo web site.**
- 2 Uncompress the downloaded file in any folder.**
- 3 Access the firmware update menu of the WEB settings (En-14).**
- 4 Browse for your uncompressed file and follow the instructions on your computer screen to perform the update.**
"F/W UpdateMode" is displayed on the Main device, and the firmware update starts.
Wait until "Please Restart" appears.
- 5 Set the Main device to Standby mode or turn its power off and then turn it back on.**
This completes the firmware update. UP-AR1 is now updated with the latest firmware version.

For further details, visit the Onkyo web site. You can find the home page address on the back of this manual.

Troubleshooting

The LED is off

- Make sure that the UP-AR1 is connected to the Main device. (En-10)

The LED is blinking

- Upon initialization, the LED blinks for about 1 minute while the UP-AR1 is connecting to the Network. If the blinking persists, the Network connection has failed. Check the Network setup. (En-10)

Cannot connect to Wi-Fi (wireless LAN)

Make sure that your Wi-Fi router has support for the following features:

- 802.11b or 802.11g standard.
- Channel band of 1-11 ch.

There's no sound

- Make sure that the volume level of the Main device is properly set.
- Make sure that the **PORT** selector is selected .
- Refer to the "Troubleshooting" section of the Main device's instruction manual.

The STATUS LED won't go off

- Since "Wake Up On AirPlay" is set to "On" by factory default, the UP-AR1 remains switched on even if the Main device is in standby mode. To turn the UP-AR1 off, set "Wake Up On Airplay" to "Off" before switching the Main device to standby. (En-14)

The following table describes the UP-AR1's status.

STATUS LED	Main device's display	Status
Off	PORT	UP-AR1 is not connected to AV receiver.
Solid Lighting	-	AirPlay can be played.
Blinking	Starting	UP-AR1 is starting.
	No Network	Not connected to Network. Please connect an Ethernet cable or set up a Wireless LAN. (En-10, 11) If the setup fails and Network connection is impossible, reset the UP-AR1 to its factory defaults. (En-14)
Faster Blinking	Clear	UP-AR1 is resetting to factory defaults.

Specifications

Transmission frequency:

2.4 GHz band (2412 MHz - 2462 MHz,
1 - 11 ch)

Rating: DC 12 V, 0.5 A

Dimensions (W × H × D):

5" × 1-11/32" × 5-1/2"
(127 mm × 34.3 mm × 140 mm)

Weight: 0.9 lbs. (0.4 kg)

Specifications and features are subject to change
without notice.

En-18

ONKYO®

ONKYO SOUND & VISION CORPORATION

2-1, Nisshin-cho, Neyagawa-shi, OSAKA 572-8540, JAPAN
Tel: 072-831-8023 Fax: 072-831-8163
<http://www.onkyo.com/>

ONKYO U.S.A. CORPORATION

18 Park Way, Upper Saddle River, N.J. 07458, U.S.A.
Tel: 800-229-1687, 201-785-2600 Fax: 201-785-2650
<http://www.us.onkyo.com/>

ONKYO EUROPE ELECTRONICS GmbH

Liegnitzerstrasse 6, 82194 Groebenzell, GERMANY
Tel: +49-8142-4401-0 Fax: +49-8142-4401-555
<http://www.eu.onkyo.com/>

ONKYO EUROPE ELECTRONICS GmbH (UK BRANCH)

The Coach House 81A High Street, Marlow, Buckinghamshire, SL7 1AB, UK
Tel: +44-(0)1628-473-350 Fax: +44-(0)1628-401-700

ONKYO CHINA LIMITED

Unit 1 & 12, 9/F, Ever Gain Plaza Tower 1, 88, Container Port Road, Kwai Chung,
N.T., Hong Kong. Tel: 852-2429-3118 Fax: 852-2428-9039
<http://www.ch.onkyo.com/>

ONKYO CHINA PRG

1301, 555 Tower, No.555 West NanJin Road, Jin an, Shanghai,
China 200041, Tel: 86-21-52131366 Fax: 86-21-52130396

SN 29400786

(C) Copyright 2011 ONKYO SOUND & VISION CORPORATION Japan.
All rights reserved.

Y1104-1



* 2 9 4 0 0 7 8 6 *