

	3 sec	3 seconds
	4 sec	4 seconds
	5 sec	5 seconds
	6 sec	6 seconds
	7 sec	7 seconds
	8 sec	8 seconds
	9 sec	9 seconds
	Indefinitely	Single read mode : reader will stay on until a bar code is read. Multiple read mode : reader will stay on until power is recycled (not recommended)
	X1	No multiplication of read time (default)
	X10	Read time * 10
Version	Information field which shows the bar code readers firmware version. RBAV01xx is used for 1D laser module. FL23Jxx is used for 2D CMOS module. If no version is displayed the bar code reader is not found. Note xx can have a value between 01 and 99.	

Table 3-17 **Basic TAB description**

### 3.2.1.2 Code Configure TAB

In the Code Configure tab the bar code symbologies can be enabled or disabled. It is strongly recommended to select only the required code. Advantages of selecting the required codes are :

- faster reading,
- no accidental scanning of unwanted bar codes,
- reduced probability of reading errors which can not be prevented completely, because of the limited security of some bar code types.

Bar code specific options can not be selected in this version of the Bar Code Settings tool. In case bar code specific options are required, refer to Opticon's Universal Menu Book,

chapter 3 and lookup the serial command sequence, and enter this commands sequence in Bar Code Settings tool's "Advanced" TAB.

The Opticon Universal Menu Book can be downloaded from [www.opticon.com](http://www.opticon.com).

Note : support for symbologies may be dependent of the bar code reader firmware.

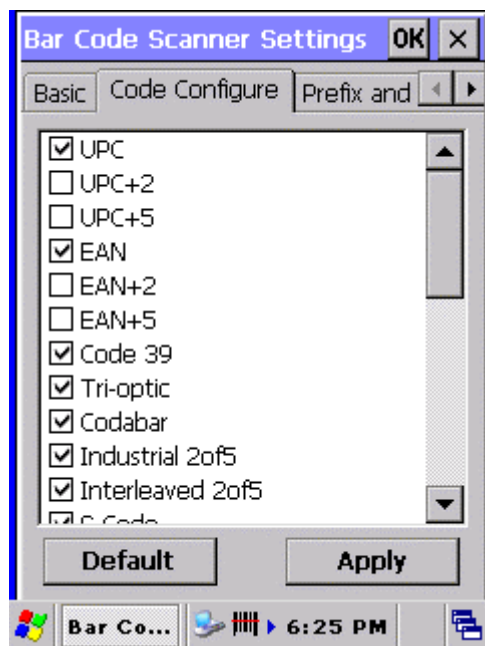


Figure 3-2 Code configure Tab

Field name	Description
UPC	Enable UPC A and UPC-E (default)
UPC+2	Enable UPC-A ADDON 2 and UPC-E ADDON 2
UPC+5	Enable UPC-A ADDON 5 and UPC-E ADDON 5
EAN	Enable EAN-13 and EAN-8 (default)
EAN+2	Enable EAN-13 ADDON 2 and EAN-8 ADDON 2
EAN+5	Enable EAN-13 ADDON 5 and EAN-8 ADDON 5
Code 39	Enable Code 39 (default)
Tri-optic	Enable Tri-optic (default)
Codabar	Enable Codabar (default)
Industrial 2of5	Enable Industrial 2of5 (default)
Interleaved 2of5	Enable Interleaved 2of5 (default)
S Code	Enable S Code (default)
Matrix 2of5	Enable Matrix 2of5
Chinese Post Matrix 2of5	Enable Chinese Post Matrix 2of5