

Note: If the device to which the PDT is bonding does not appear in the list, ensure it is turned on, in discoverable mode, and within range (30 feet / 10 meters) of the PDT.











Icon		Description
	Unknown device icon	Device is not defined
	Locked icon	Device is locked and can not be bonded to.
	Not locked icon	Device is not locked and can be bonded to.
	Bluetooth device icon	Bluetooth device
	Bonded device icon	Bonded Bluetooth device
	Mobile device icon	Device is a mobile device
	Phone icon	Device is a phone.
	Printer icon	Device is a printer
	Network icon	Device is a network.
	Linked icon	Device is linked.

Table 3-18 **Bluetooth Icons**

3.2.3 Certificates

Certificates are used by some applications for establishing trust and for secure communications.

Certificates are signed and issued by certificate authorities and are valid for a prescribed period of time. Windows CE manages multiple certificate stores.


ICON	ITEM & FUNCTION
	<ul style="list-style-type: none"> • “Store” Tab (Figure 3-31) : ✓ In the Stores tab, select the certificate store you wish to view or modify from the drop-down list (Figure 3-32). ✓ The “Trusted Authorities” store lists the top-level certificates for authorities you trust. (Figure 3-33 , Figure 3-34) ✓ The “My Certificates” store contains your personal certificates, which you use to identify yourself. ✓ Intermediate certificate authorities that help establish a chain of trust are stored in the “Other Authorities” store.
	<ul style="list-style-type: none"> • “Store” Tab : ✓ To add a certificate or associated private key to the selected store, select “Import” (Figure 3-35). ✓ To view more details of the selected certificate, such as the expanded name or expiration date, choose “View”. ✓ To delete the selected certificate from the store, choose “Remove”.

Table 3-19 Certificates

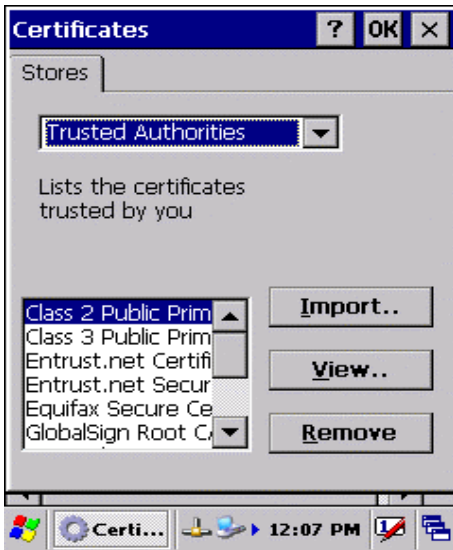


Figure 3-31 Certificates

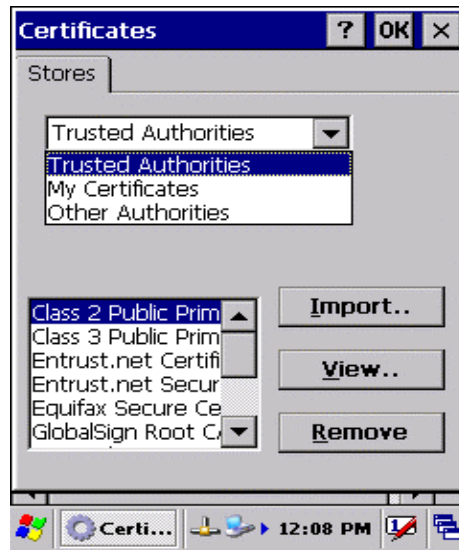


Figure 3-32 Certificates

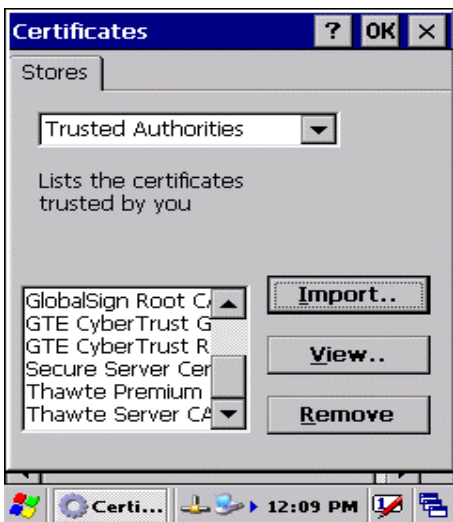


Figure 3-33 Certificates

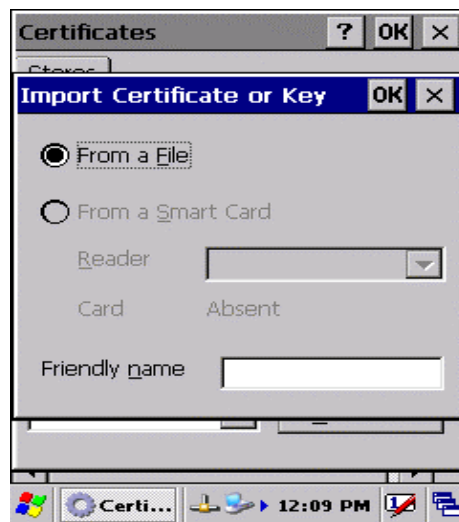


Figure 3-34 Certificates



Figure 3-35 Certificates

3.2.4 Control Center

The Control Center includes four Property buttons. These are property buttons for PDT device information, display brightness, system Backup Restore and Fn-Key Settings.

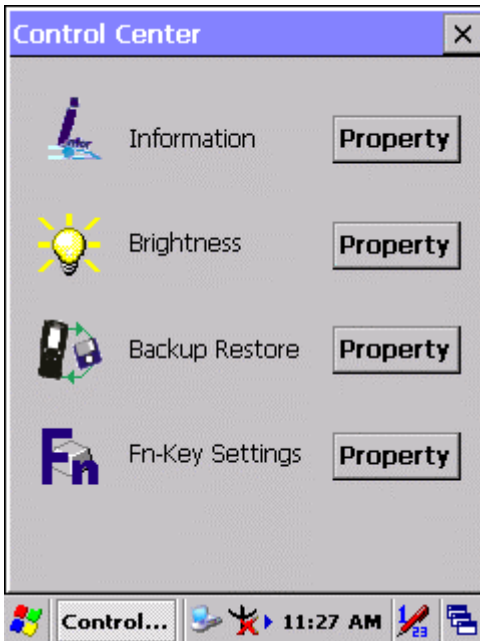


Figure 3-36 Control Center

3.2.4.1 Information


ICON	ITEM & FUNCTION
	<ul style="list-style-type: none"> • “Information” Tab : ✓ Provide Software version, MAC address, Bluetooth ID, Serial No. and Configuration No.

Table 3-20 Information

3.2.4.2 Brightness


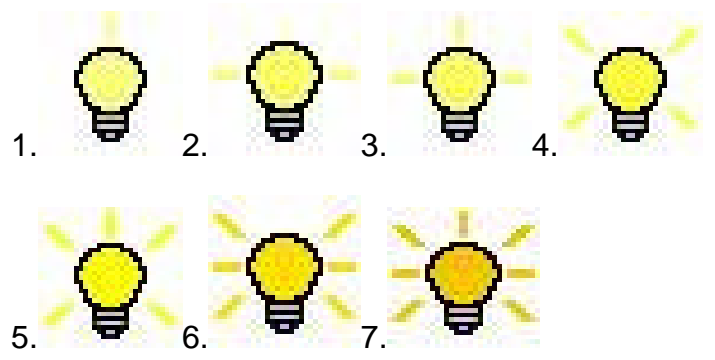
ICON	ITEM & FUNCTION	
	<p>LCD Brightness Tune the LCD brightness by tapping right-arrow & left-arrow. Can also tune the LCD brightness by pressing right-direction key or left-direction key of keypad.</p>	
	<p>Amounts 7 steps: Every step have corresponding picture of self.</p>	
		
	<input type="checkbox"/> Enable Keypad Brightness	Open keypad brightness or not.
<p>Backlight Timeout Save battery life by automatically turning off the backlight when not used.</p>		
<input checked="" type="checkbox"/> Battery Power, turn off backlight after	<p>The table must disable when its item is not marked. The table has 15 seconds, 30 seconds, 1 minute, <u>2 minutes</u> and 5 minutes.</p>	
<input type="checkbox"/> AC Power, turn off backlight after	<p>The table must disable when its item is not marked. The table has 15 seconds, 30 seconds, 1 minute, <u>2 minutes</u> and 5 minutes.</p>	
<input checked="" type="checkbox"/> Dim backlight after 20 seconds of idleness.	Save battery life functionally of idleness mode, open it or not.	

Table 3-21 **Brightness**

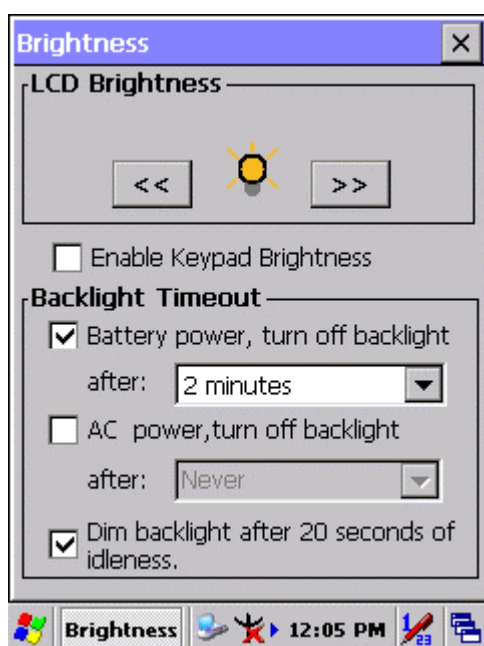


Figure 3-37 **Brightness**

3.2.4.3 Backup Restore

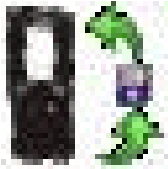
ICON	ITEM & FUNCTION
	<ol style="list-style-type: none"> 1. You can backup/restore the system to/from flash disk or inserted memory card. (A. Disk on Chip, B. CF Card, C. SD Card, Figure 3-38) 2. When you launch this application, it must check backup file in Disk On Chip first. And if you select other storage, it will check again. 3. If a previous backup file is found, its date appears behind "Last backup date: "; if not, the "Restore Now" button is disabled. 4. When you press the Backup/Restore Button, a warning dialog will pop up. (Figure 3-39) 5. When system backup/restoring is finished, a message dialog will pop up. (A. Backup: Figure 3-40, B. Restore: Figure 3-41)

Table 3-22 Backup Restore



Figure 3-38 Backup Restore

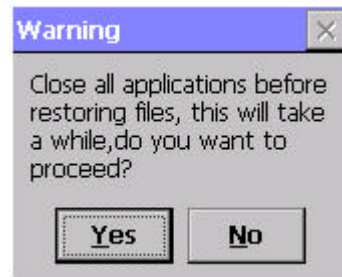
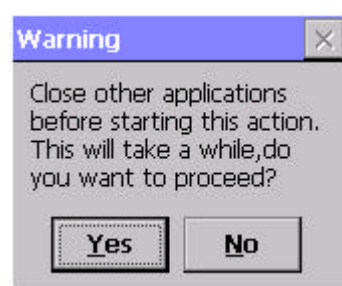


Figure 3-39 Backup & Restore Start

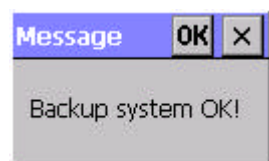


Figure 3-40 Backup OK

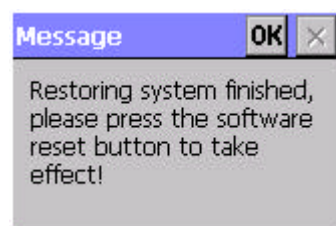


Figure 3-41 Restore OK